

Fire & Arson Investigation



SIRCHIE[®]
Fire and Arson

www.sirchie.com



Fire & Arson Investigation

Fire fighters, fire investigators, and arson investigators are faced with some of the toughest scenes to investigate and analyze. Potential evidence can often be difficult to find and damaged in scenes that might not be safe. With feedback from arson investigators, we've developed many tools to help you find, collect and preserve evidence in complex dark scenes.



Since 2013, we've developed and delivered free monthly webinars about popular forensic and topical issues. Subjects have included "Arson & Crime Scene Photography," "Arson Investigations Basics," and a Narcotics Investigation series on topics, including Fentanyl, K2/Spice, Bath Salts, and more. Everyone who attends a live webinar receives a Certificate of Attendance, which they can place in their CV and put towards continuing education. Contact us if you would like access to our webinar library.

Webinar Topics



Arson & Crime Scene Photography



Arson Investigation Basics



Testing Heroin & Fentanyl



Basics of Surveillance

Arson Documentation & Evidence Collection



When is fire not an accident? To determine this, the fire scene must be treated as a crime scene. In this course, students will learn how to properly document the scene as well as identify and collect key evidence for expert review and court submission. This course is aimed at both those beginning in fire investigation as well as those who are interested in learning more, including private investigators, law enforcement, legal representatives, and educators.



For more information about this and all other training courses, visit www.sirchie.com or call us at +1.919.554.2244.

Contact us if you would like access these and many more webinars in our webinar library.

Scene Security and Safety

Barrier Tape

When control of an area is a priority, establish and maintain security by creating perimeters quickly and efficiently with our barrier tape.

- Eye-catching black lettering is printed on brilliant yellow or red polyethylene.
- The tape is three inches (7.5 cm) wide by 1,000 feet (300 m) long.
- Warning repeats every 31 inches.



Please note: bulk packaged rolls do not come with dispenser boxes. See barrier tape dispensers for bulk packaged rolls.

Custom barrier tape available with a minimum order of 96 rolls. Call for quote.

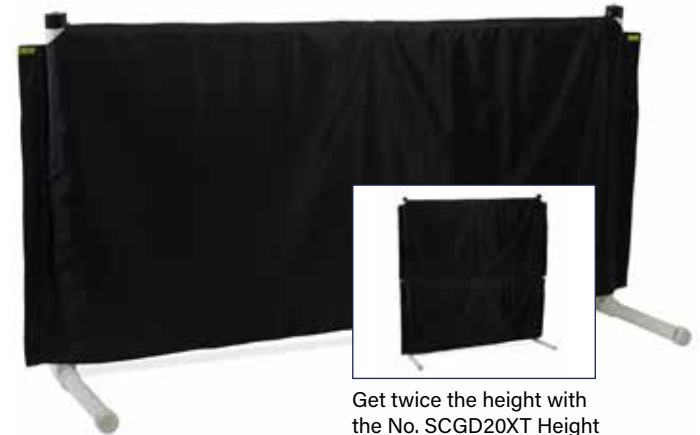
Scene Guard Photography Barrier



Protecting the crime scene and preserving evidence sometimes means preventing the public from viewing the scene. Scene Guard is a portable, rapidly assembled privacy screen that shields the scene from the public view and lets medical personnel and investigators operate more securely. Double the height of your Scene Guard with the Height Extension Kit (No. SCG20XT). Add attention-getting lights with red or blue LED Light Kits (No. SCGD20LB & SCGD20LR).

Benefits include:

- Only one person needed to put up the Scene Guard and no tools are required
- Wind-resistant and can be used indoors and outdoors
- Multiple barriers can be attached together for larger scenes



Get twice the height with the No. SCGD20XT Height Extension Kit

Description/Catalog No.	
Barrier Tape w/disp box, 1 roll No. BT100	CRIME SCENE DO NOT CROSS
Barrier Tape, 8 rolls No. BT100BP	CRIME SCENE DO NOT CROSS
Barrier Tape w/disp box, 1 roll No. BT400	FIRE LINE DO NOT CROSS
Barrier Tape, 8 rolls No. BT400BP	FIRE LINE DO NOT CROSS

Barrier Tape Dispenser

Plastic dispenser with carrying handle holds one roll and is ideal for carrying, protecting and managing a large tape roll. Tape dispenses through a slot to prevent tangling and waste and allows easier unwinding. A protected blade makes tearing the tape neat and easy.



No. BTD100

Barrier Tape Dispenser



LED Light Kits available in blue or red

No. SCGD20	Scene Guard Photography Barrier
No. SCGD20XT	Scene Guard Height Extension Kit
No. SCGD20LB	Scene Guard Blue LED Light Kit
No. SCGD20LR	Scene Guard Red LED Light Kit

(TIC) Thermal Imaging Cameras

Handheld Devices

The most advanced handheld thermal imaging cameras on the market today offer powerful detection in a n easy to use, rugged package. Self-contained with high-performance thermal sensors, the Reveal handhelds are perfect if you don't want to connect a device to your phone. Each Reveal handheld imager also has a built-in 300 lumen LED flashlight. Available in three options.



RevealPro

The RevealPRO is the most powerful and versatile handheld version with a range from 6 inches to 1,800 feet and the most powerful sensor.

Features include:

- Adjustable Emissivity and Radiometric Files
- Easily documents and saves thermal images directly to the 4GB internal hard drive or a MicroSD card
- A frame rate greater than 15 frames per second for a smooth image display while moving and scanning
- 32 degrees field of view
- Long-lasting rechargeable battery of up to 5 hours



No. STRQAAAX

Reveal Pro (Fast Frame)

Reveal XR (Long Range)

The Reveal Long Range gives you up to 900 ft detection distance at a frame rate of 15 frames/second for smooth scanning; ideal for outdoor applications. Available in black or camo



No. STRTABAX

Reveal XR (Long Range), Fast Frame, black

No. STRTACAX

Reveal XR (Long Range), Fast Frame, camo

Reveal WV (Wide View)

The Reveal Wide View has 36 degrees field of view with a frame rate of 15 frames/second, perfect for scanning an area quickly.



No. STRWAAAX

Reveal WV (Wide View) , fast frame (>15 Hz)

Smart Device Camera Attachment

The Compact series offers powerful thermal imaging capability controlled through an app on your Apple or Android device. Search and capture images easily and store them on your mobile device.

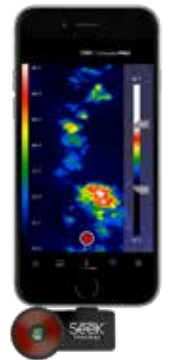


CompactPRO

The most powerful and versatile option, the CompactPRO, gives you a combination of long range and wide field of view with the most powerful sensor available.

Features include:

- Adjustable emissivity and radiometric files
- Ability to focus your lens for quick identification
- Uses the power and display of your smartphone
- A detection distance of up to 1800 ft
- Possible unlimited storage through your phone
- A thermal sensor of 320 x 240



No. STLQAAAX

CompactPRO, fast frame (for iPhone)

No. STUQAAAX

CompactPRO, fast frame (for Android)

Compact XR (Long Range)

With up to 1,800 ft of detection distance and a 20 degree field of view, you'll have an idea device for outdoor applications.



No. STLTAAX

Compact XR (Long Range), for iPhone

No. STUTAAA

Compact XR (Long Range), for Android

Compact WV (Wide View)

You'll be able to quickly scan up to 36 degree field of view with a detection distance of 1,000 feet.



No. STLWAAA

Compact WV (Wide View), for iPhone

No. STUWAAA

Compact WV (Wide View), for Android

Personal Protection

Multi-Purpose Half Mask Regulator

This versatile mask is comfortable and useful for many different situations with three filter choices. Soft silicone fits around the nose while hard plastic ensures a leak-resistant fit. Filters will get rid of almost all decaying matter and hazardous vapors.



No. PU0010	Multi-Purpose Half Mask
No. PU0011	Organic Vapor/Acid Gas Filters, 2 ea.
No. PU0012	P100 Filters (99.7% or airbourne particles), 2 ea.
No. PU0013	Organic Vapor/ P100 Filters, 2 ea.

Long Cuff Nitrile Gloves

These long cuff, powder-free, durable, 8 mil nitrile gloves provide extra thickness for added protection. Perfect for tough jobs where extra durability or safety is needed. Meets NFPA standards for MES workers and provides protection against bloodborne pathogens. Available in five sizes, and come 50 each per box.



No. SF00871	Long Cuff Nitrile Gloves, Sm, 50 ea.
No. SF00872	Long Cuff Nitrile Gloves, Md, 50 ea.
No. SF00873	Long Cuff Nitrile Gloves, Lg, 50 ea.
No. SF00874	Long Cuff Nitrile Gloves, XL, 50 ea.
NO. SF00875	Long Cuff Nitrile Gloves, 2XL, 50 ea.

Blue Powder-Free Nitrile Gloves

These blue, powder-free, nitrile gloves provide extra puncture and abrasion resistance over latex. Sold in boxes of 100 ambidextrous gloves.



No. SF00851	Blue Powder-Free Nitrile Gloves, Sm, 100 ea.
No. SF00852	Blue Powder-Free Nitrile Gloves, Md, 100 ea.
No. SF00853	Blue Powder-Free Nitrile Gloves, Lg, 100 ea.
No. SF00854	Blue Powder-Free Nitrile Gloves, XL, 100 ea.

Black Powder-Free Nitrile Gloves

These thin, comfortable, ambidextrous nitrile gloves provide extra puncture and abrasion resistance. Always use nitrile gloves while working with illicit substances and NARK presumptive drug kits.



No. SF0081S	Black, Powder-Free, Sm, 100 ea.
No. SF0081M	Black, Powder-Free, Md, 100 ea.
No. SF0081L	Black, Powder-Free, Lg, 100 ea.
No. SF0081XL	Black, Powder-Free, XL, 100 ea.

Tyvek® Protection Suits

Each suit is made of Tyvek® fabric, which is resistant to snags, tears, punctures, and many chemicals. Roomy and comfortable.

- Disposable Jumpsuit with Hood. Available in Medium to XX-Large
- Personal Protection Coveralls features shoe covers for head to toe coverage. Available in Large-XX-Large.



Tyvek® Jumpsuits include a hood



Personal Protection Coveralls include a hood and integrated shoe covers

No. SF0072M	Tyvek® Jumpsuit w/hood, Md, 1 ea.
No. SF0072	Tyvek® Jumpsuit w/hood, Lg, 1 ea.
No. SF0072XL	Tyvek® Jumpsuit w/hood, XL, 1 ea.
No. SF0072XXL	Tyvek® Jumpsuit w/hood, 2XL, 1 ea.
No. TYV100	Personal Protection Coveralls, Lg, 1 ea.
No. TYV101	Personal Protection Coveralls, XL, 1 ea.
No. TYV102	Personal Protection Coveralls, 2XL, 1 ea.

Scene Lighting

Paladin Light HERO Kit

Perfect for crime scene investigators, fire investigators, law enforcement officers, tactical officers, and corrections officers, the HERO Kit is quickly accessible and holds everything you need. Settings include 1,000 Lumens, 5,000 Lumens, 10,000 Lumens, Traffic Mode (slow alternating flashing) and Riot Mode (features a blinding strobe effect that will disorient subjects in an emergency situation).



No. PLH1000

Paladin Light HERO Kit

Nomad Prime Portable Area/Spotlight

One of our most versatile scene lights, the Nomad Spotlight can convert from an area light to a spotlight in seconds. Use it as a personal light or mount it for a well-lit work area. You can take it anywhere, it's build for rugged use, and easily and quickly adapts to your needs. It has up to 2,500 lumens and a 24-hour battery life.



Quickly convert the NMD800 from an Area Light to a Spotlight by detaching the diffuser lens.

No. NMD800

Nomad Prime Portable Area/Spotlight

Nomad 360 Scene Light

The 360 Light gives you some flexibility in scene lighting: it converts from an area light to a spotlight to a 360° scene light in seconds. It's portable, waterproof, and features a self-contained design so you can use it or mount it anywhere you need it.



Versatile 3-in-1 Lighting

Area Light:
Diffuser Down

Spotlight:
Diffuser Up

360° Scene
Light: Fold in the
NMD900 Light
Panels

No. NMD900

Nomad 360 Scene Light

Nomad NOW Portable Light

The NOW portable light gives you two functions within one light: as an area light or a spotlight. It's portable and can be used underwater (up to 10ft) for water rescues and photography. It's built for rugged all-weather use: desert heat, heavy rain, snow, and everything in between. It features up to 2,500 lumens and has a battery life of up to 24 hours.



No. NMD400

Nomad NOW Light

Nomad Light Transformer

This ultimate scene light for larger events provides up to 14,000 lumens for up to 24 hours. The adaptive Nomad Transformer converts from an area light to spotlight to 360° scene light by way of its Sliding Diffuser Lens and opening/closing the light head. Its portable, waterproof design allows it travel to (and be used in) places that standard scene lights, street lamps and vehicle mounted lights cannot reach.



No. NMD1200

Nomad Light Transformer

Scene Lighting

Portable Remote Area Lighting System

Your entire work area can be safely lit with this system: its mast extends up to seven feet, it has a 125 degree beam spread and provides up to 5,300 lumens. It features Bluetooth remote activation, three pre-set power levels, battery level indication, and a rechargeable lithium battery (fully-charged, it will last up to eight hours).



The PCN9440 12 LED Light Array delivers up to 5,300 lumens.



No. PCN9440 Portable Remote Area Lighting System

Rugged Remote Area Lighting System

Get the flexibility you need with this system: it has two swiveling telescope masts (each extends up to six feet) and two 360 degree light arrays. Each light supplies up to 6,000 lumens, giving you the option to have 12,000 lumens. Battery life depends on how you're using it but it has up to seven hours for peak time but with an Intelligent Control System, it calculates and displays current battery life, allowing you to alter your usage. Available with wireless activation.



Both the PCN9460 & PCN9460RS are built self-contained in a rugged Pelican case.



No. PCN9460 Rugged Remote Area Lighting System

No. PCN9460RS Rugged Remote Area Lighting System (wireless)

4-Mast Rugged Area Lighting System

With four telescope masts up to six feet, four 360 degree light arrays, these four lights can give you a combined 24,000 lumens to light up any scene no matter how dark it is. Battery life depends on how you're using it but it has up to seven hours for peak time but with an Intelligent Control System, it calculates and displays current battery life so you can alter your usage. Available with wireless activation.



6 High Flux LEDs per light head produce a total of up to 24,000 lumens of light.



PCN9470 & PCN9470RS are built self-contained in a tough-as-nails Pelican case.

No. PCN9470 4-Mast Rugged Area Lighting System

No. PCN9470RS 4-Mast Rugged Area Lighting System (wireless)

Arson Evidence Detection & Recovery

Combustible Gas Detector

Protect yourself and your team with this general purpose combustible hydrocarbons detector. Lightweight and portable, it will quickly locate minute concentrations of combustible hydrocarbons and the presence of hazardous vapors. To guarantee proper operation and maintain ISO traceability, the sensor must be replaced every two years. Available in 110V and 220V.



Detectable Compounds:
 Acetylene, Methyl Chloride, Iso-Butane, Hydro Sulfide, Methane, Acetone, Ethane, Methanol, Propane, Ammonia, Ethylene, Gasoline, Hydrogen, Chlorine, Methyl Ether, Vinyl Chloride.

No. CGD8800X Combustible Gas Detector, 110V
No. CGD8800X220 Combustible Gas Detector, 220V

Arson Electrical Tool Kit

Created with input from fire investigators, the kit is perfect for investigating possible electrical causes of fire. Also, you'll have what you need to test and render safe electrical systems at fire scenes.



No. AET10 Arson Electrical Tool Kit

Super Scanner V Hand-Held Metal Detector

One of the most recognized hand-held metal detectors in the world, the Super Scanner includes both audible and vibrating alarm options and extended battery life.



It detects ferrous, non-ferrous, and stainless steel weapons, contraband, and other metallic objects.

No. MDWAND Super Scanner V

CSI Pro-Pointer PinPointing Metal Detector

The CSI Pro-Pointer speeds the search and recovery efforts for crime scene evidence, such as weapons, shell casings, and projectiles. This highly-sensitive pinpointer has audible and vibrating alarms and requires no tuning.



No. MDBATON CSI Pro-Pointer

Evidence Recovery, Marking & Documentation

Ground Search Metal Detector

Designed to find common crime scene targets, such as bullets, this detector is ideal for budget-minded departments and agencies.



No. ECMD250

Ground Search Metal Detector

Char Depth Gauge

A useful aid to any arson investigation kit, this gauge can help indicate how long the substance burned, how intense the fire was, and can help indicate the possibility of accelerants.



No. CG1000

Char Depth Gauge

Debris Sifting Screens

Save time and sift through large volumes of potential evidence while eliminating unimportant debris with these sifting screens. Opening sizes from 1/8" up to 1/4".

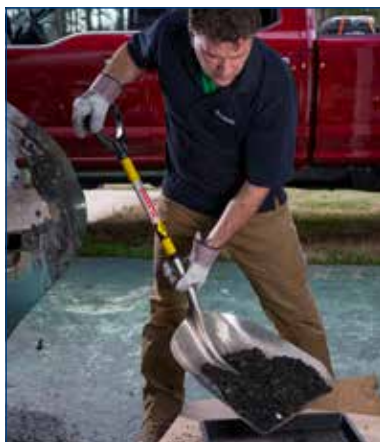


No. DBS3

Debris Sifting Screens

Debris Sifting Shovel

This modified shovel features sorting holes that lets you sift through evidence, even in areas that have been completely burned.



No. DSS21

Debris Sifting Shovel

Fire Incident 3 x 5 Report Notebook

This 3" x 5" notebook features Fire Incident Report Forms. (100 pages-50 sheets).



No. RR125

Fire Incident 3 x 5 Report Notebook

All-Weather Clicker Pen

This all-weather pen will write on wet paper and upside down in temperatures -30F to 250F. It's tough, reliable, and write no matter what situation you're in.



No. RR97B

Metal Black Clicker Pen, blue ink

Sirchmark™ First Responders Evidence Marking Kit

This kit provides first responders with the tools to secure a crime scene and begin the evidence marking process, either in day or night.



No. SM911

Sirchmark First Responders Evidence Marking Kit

Sirchmark™ Evidence Marking Paint or Kit

Investigators use this paint to identify key evidence at a crime scene or a traffic accident in a highly visible way. The paint is not permanent, will wear off naturally within 60 days of application, and comes in fluorescent, pink, orange, or yellow. Buy all colors with a paint dispenser and carrying case in our Sirchmark Evidence Marking Kit.



No. SEP100Y

Evidence Marking Paint, yellow, 17 oz. can

No. SEP100P

Evidence Marking Paint, pink, 17 oz. can

No. SEP100N

Evidence Marking Paint, orange, 17 oz. can

No. SEP200

Paint Dispenser

No. SEP100K

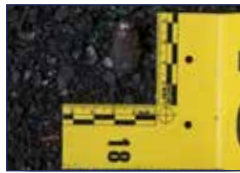
Evidence Marking Paint Kit

Evidence Marking & Documentation

Mark-n-Doc All-in-One Evidence Markers



Mark items of interest with a scale in this two-in-one device! Multiple holes allow you to secure them firmly on vertical surfaces. Available in standard non-cut out with letters (A-Z) and cut-out Numbers (1-20) or (21-40). Choose between metric and English Scale.



No. MDE120	Cut-out Numbered (1-20), English scale
No. MDE2140	Cut-out Numbered (21-40), English scale
No. MDEAZ	Standard Lettered (A-Z), English scale
No. MDM120	Cut-out Numbered (1-20), metric scale
No. MDM2140	Cut-out Numbered (21-40), metric scale
No. MDMAZ	Standard Lettered (A-Z), metric scale

Evidence Indicators

Investigators can use these signs for crime or accident scenes to indicate evidence location.



- They're available in your choice of aluminum or plastic.
- The thick-polystyrene material is long-lasting and durable.
- The matte finish reduces reflections.
- Available in numbered signs, alphabet signs, or direction indicators

No. PEN15	Aluminum Photo Numbers (1-15)
No. PEN1650	Aluminum Photo Numbers (16-50)
No. PEN5199	Aluminum Photo Numbers (51-99)
No. PEN15V	Plastic Photo Numbers (1-15)
No. PEN1650V	Plastic Photo Numbers (16-50)
No. PEN5199V	Plastic Photo Numbers (51-99)
No. PEN15VS	Short Plastic Photo Numbers (1-15)
No. PEN1650VS	Short Plastic Photo Numbers (16-50)
No. PEN5199VS	Short Plastic Photo Numbers (51-99)
No. PEA26	Aluminum Photo Alphabet (A-Z)
No. PEA26V	Plastic Photo Alphabet (A-Z)
No. PEA26VS	Short Plastic Photo Alphabet (A-Z)
No. PDN17	Aluminum Direction Indicators, 13 each
No. PDN17V	Plastic Direction Indicators, 13 each
No. PDN17VS	Short Plastic Direction Indicators, 13 each

Evidence Marking Flags

Make evidence easy to relocate or photograph by marking it with these brightly colored evidence flags. Flags are 21" tall and come in bright pink, orange, yellow, red, blue, and white. Yellow flags have "Evidence - Do Not Touch" in black on them.



No. EVFP100	Pink Evidence Flags, 100 ea.
No. EVFO100	Orange Evidence Flags, 100 ea.
No. EVFR100	Red Evidence Flags, 100 ea.
No. EVFB100	Blue Evidence Flags, 100 ea.
No. EVFG100	Green Evidence Flags, 100 ea.
No. EVFW100	White Evidence Flags, 100 ea.
No. EVFY100	Yellow Evidence Flags, 100 ea.

Evidence Flag Quiver

Have your hands free as you go through the time-consuming task of placing flags around crime scenes. It holds up to 100 flags and wraps around your leg. Flags sold separately.



No. EFQ100	Evidence Flag Quiver	\$9.22
------------	----------------------	--------

Sirchmark™ Evidence Marking Pointers

Use the Evidence Pointers, with their arrow shape, to clearly mark evidence and indicate specific items of interest at a crime scene. Made from bright colored acrylic for visibility against backgrounds, they're lightweight and durable and can be used on any surface with StikkiDots.



No. SEM20Y	Yellow Evidence Marking Pointers, 20 ea.
No. SEM20N	Orange Evidence Marking Pointers, 20 ea.
No. SKD50	StikkiDots, 50 ea.

Evidence Marking & Documentation

Reflective & White Chalk

Reflective chalk is perfect for illuminating the location of evidence, skid marks, or debris that wouldn't normally be visible in night-time photography. It



illuminates with photoflash or flashlight. Get the extension pole and chalk holder for when you need to reach hard places.

White chalk is recommended for daytime applications.

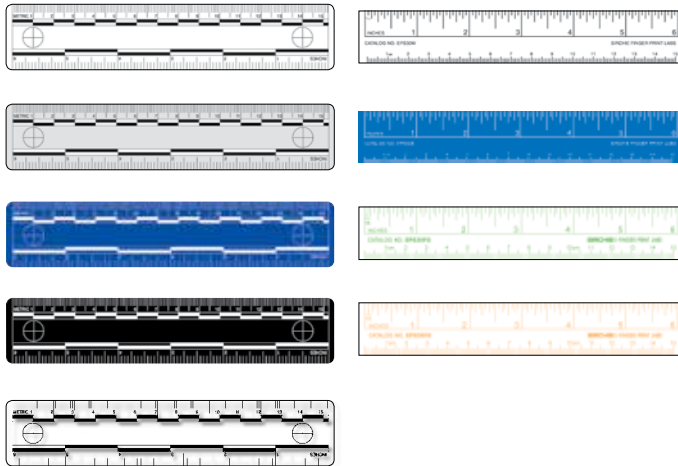
No. RCHALK **6" Reflective Chalk, 1 ea.**

No. WCHALK **4" White Chalk, 3 ea.**

Vinyl Photo Evidence Scales

Two forms of measurements on one scale. These vinyl scales have inches and millimeters with crosshairs at each end. The matte-finish also eliminates reflections from camera flash. Products are offered 6" (15cm) and either 2 mil to 10 mil thick.

Our Evidence Scale Variety Pack includes: (2) PPS400, (2) PPS401, (2) PPS403, (1) PPS402, (1) PPS404, (1) EPS30FG, and (1) EPS30FO



No. PPS400 **2 mil Vinyl Scale, Black on White, 10 ea.**

No. PPS401 **2 mil Vinyl Scale, Black on Gray, 10 ea.**

No. PPS402 **2 mil Vinyl Scale, White on Blue, 10 ea.**

No. PPS403 **2 mil Vinyl Scale, White on Black, 10 ea.**

No. PPS404 **2 mil Vinyl Scale, Black on Clear, 10 ea.**

No. EPS30W **10 mil Vinyl Scale, Black on White, 10 ea.**

No. EPS30B **10 mil Vinyl Scale, White on Blue, 10 ea.**

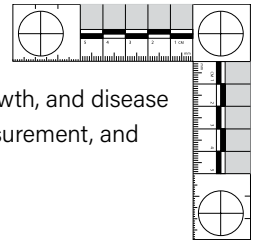
No. EPS30FG **10 mil Vinyl Scale, Fluor. Green on White, 10 ea.**

No. EPS30FO **10 mil Vinyl Scale, Fluor. Orange on White, 10 ea.**

No. PPS410 **Evidence Scale Variety Pack**

Dental Forensic Scales

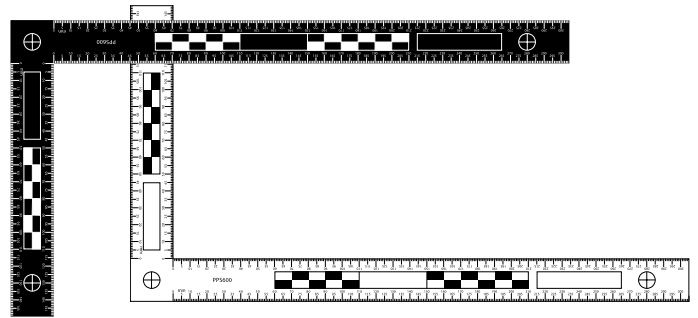
Designed primarily for forensic professionals who study the anatomy, growth, and disease of teeth. Offered in English or metric measurement, and are printed on matte-finish vinyl.



No. PPS800 **Vinyl, Black on White, 50 mm x 50 mm, 1 ea.**

Macrography Photography Scales

Designed primarily for footwear and tire track impression comparisons, these scales are perfect for verifying perspective distortion and have a glare-free finish for camera flashes. These reversible scales are printed on 40 mil-thick vinyl plastic.



No. PPS600 **Reversible Macrography L Scale, 300mm x 150mm**

Digital Measurement Kit

This versatile tool kit contains three measuring devices to make investigations easier, quicker, and more accurate. Having this kit will assist investigators with photography, laser trajectory, blood spatter, and other relevant crime scene field work.



No. DIGMK300 **Digital Measurement Kit**

Arson Evidence Documentation & Collection Kits

Grid Marking Kit

Make your investigation more efficient by conducting a thorough and comprehensive exam of fire and arson scenes. With this kit you can grid off the area and conduct a space by space examination. It will help you in the practice of accurate documentation of evidence and items of interest during your investigation.



No. GMK10

Grid Marking Kit

Master Crime Scene Sketch Kit

An absolute must for well-prepared investigators! Police departments worldwide use this kit as it gives you all the tools for rough and finished sketches. The necessary components are housed in a fold-out briefcase for use in the field or the squad car.



No. SK1000

Master Crime Scene Sketch Kit

Professional Photography Kit

We've put together the latest in technology to provide CSI with all the photographic equipment they'll need to properly and efficiently photograph a scene. This kit also covers all visible light applications, from overall scene captures to life-sized macrophotography. With the TTL flash cord (included), you'll be able to use the speedlight flash (also included) off-camera for oblique lighting.



No. CAM300

Professional Photography Kit

Arson Scene Tool Kit

Packaged in a rugged polypro plastic case, this complete tool kit has the tools for you to find evidence in some of the most difficult scenes.



No. AEC400

Arson Scene Tool Kit

Arson Tool Cleaning Kit

Designed with input from fire investigation experts to help you easily and efficiently clean tools and prevent cross-contamination as you move through different areas of an arson scene.



No. ATC100

Arson Tool Cleaning Kit

Arson Evidence Collection & Packaging

Solid Material Evidence Collection Containers

To preserve solid forms of physical evidence, these container lids have an airtight seal when put in place. This prevents possible accelerants from evaporating when in transport to the lab.



Available with and without rubber septums and labels.

No. AEC00	1 pint w/rubber septum & labels, 10 ea.
No. AECPT	1 pint, 10 ea.
No. AECPTL	1 pint w/polymer lining, 10 ea.
No. AEC01	1 quart w/rubber septum & labels, 10 ea.
No. AECQT	1 quart, 10 ea.
No. AECQTL	1 quart w/polymer lining, 10 ea.
No. AEC02	1 gallon w/rubber septum & labels, 10 ea.
No. AECGAL	1 gallon, 10 ea.
No. AECGALL	1 gallon w/polymer lining, 10 ea.

Arson Investigation Solid Sampler Kit

This kit contains the right tools you need to remove evidence from the arson scene, including plaster, soot excelsior, wood chips, and soil samples with the containers for contaminant-free delivery to the lab.



No. AEC300	Solid Sampler Kit
No. AEC300L	Solid Sampler Kit w/polymer lined cans

Arson Investigation Liquid Sampler Kit

This kit allows you to extract large and small liquid samples using the included hand pump to collect liquids from up to 10 feet away, syringes to collect samples from cracks and crevices, and petroleum strips and pH litmus strips.



No. AEC210 Replacement Hand Pump

No. AEC200	Liquid Sampler Kit
No. AEC210	Replacement Liquid Sampler Hand Pump

Arson Evidence Nylon Collection Bags

Made from tough, durable nylon, these bags eliminate the potential for cross-contamination from propellant fumes.



No. AEC510C	Arson Evidence Collection Bag, 5" x 10", 100 ea.
No. AEC1218C	Arson Evidence Collection Bag, 12" x 18", 100 ea.
No. AEC2030L	Arson Evidence Collection Bag, 20" x 30", 50 ea.

Arson Evidence Collection & Packaging

Kapak Fire Debris Nylon Tubular Rollstock

This rollback is made of nylon and is hydrocarbon free. Since it can be cut to any length, it's ideal to collect and seal evidence of varying sizes to be sent to the laboratory.



No. AET18 Fire Debris Tubular Rollstock, 18" x 125ft

Kraft Paper Evidence Bags

Durable and breathable, Kraft bags are ideal for evidence that needs to breathe, such as a bloody shirt. Available blank or pre-printed with chain of possession and identification information, properly seal the bags with our Evidence Integrity tapes.



- No. EB000** Blank Kraft Bag, 5" x 3 1/8" x 9 7/8" , 100 ea.
- No. EB000P** Preprinted Kraft Bag, 5" x 3 1/8" x 9 7/8", 100 ea.
- No. EB000P2M** Preprinted Kraft Bag, 5" x 3 1/8" x 9 7/8", 2000 ea.
- No. EB001** Blank Kraft Bag, 7" x 4 1/2" x 13 3/4", 100 ea.
- No. EB001P** Preprinted Kraft Bag, 7" x 4 1/2" x 13 3/4", 100 ea.
- No. EB001P1M** Preprinted Kraft Bag, 7" x 4 1/2" x 13 3/4", 1000 ea.
- No. EB002** Blank Kraft Bag, 8" x 5" x 18", 100 ea.
- No. EB002P** Preprinted Kraft Bag, 8" x 5" x 18", 100 ea.
- No. EB002P5C** Preprinted Kraft Bag, 8" x 5" x 18", 500 ea.
- No. EB003** Blank Kraft Bag, 12" x 7" x 18" , 100 ea.
- No. EB003P** Preprinted Kraft Bag, 12" x 7" x 18" , 100 ea.
- No. EB003P5C** Preprinted Kraft Bag, 12" x 7" x 18", 500 ea.

Sirchmark™ Evidence Tape

Coated with a permanent, acrylic adhesive that defies removal from most surfaces. Available in red or blue with "Evidence," imprint. Choose between standard tape or a version with a white stripe for writing pertinent information. Comes in a handy dispenser box.



- No. SM10002** Red, "Evidence", 108ft
- No. SM10002B** Blue, "Evidence", 108ft
- No. SM50002** Red w/white Stripe, "Evidence", 108ft
- No. SM50002B** Blue w/white Stripe, "Evidence", 108ft

Education & Training

Evidence Collection Course

Law Enforcement Professionals operate in an increasingly complex environment where budgets are tight, crime scenes are complicated, and the public expects investigations to lead quickly to justice. Knowing this, we offer our Evidence Collection Accelerated Training Program with limited class sizes, covering the scientific methods of collection, identification, evaluation, and preservation of physical evidence. Once you complete this class, you'll have the knowledge to collect evidence effectively to be used in the court of justice.



You should attend this class if

- You process crime scenes
- You want to learn more about the latest tools and techniques used to process crime scenes
- You want to find as much as evidence as possible at a crime scene

Topics include:

- Crime Scene Investigation
- Fingerprint Theory & Classification
- Fingerprint Development – Powders
- Processing Latent Prints with Chemicals
- Crime Scene Photography
- Controlled Substances Identification
- Serial Number Restoration
- Firearms and Ballistics
- Alternate Lights and RUVIS
- Physiological Fluids
- Digital Forensics
- Footprint, Tire, and Toolmark Impression

Arson Documentation & Evidence Collection

When is fire not an accident? To determine this, the fire scene must be treated as a crime scene. In this course, students will learn how to properly document the scene as well as identify and collect key evidence for expert review and court submission. This course is aimed at both those beginning in fire investigation as well as those who are interested in learning more, including private investigators, law enforcement, legal representatives, and educators.



Topics include:

- Introduction to Arson principles
- Surveying the scene
- Fire scene sketching and photography
- Evidence management – sorting, packaging, documentation
- Practical hands-on exercises

Crime Scene Photography Course

This 5-day course is designed for all personnel in the judicial process who are charged with taking crime scene photographs and/or presenting the images in judicial and administrative proceedings. The comprehensive course is also a designed for instructors charged with teaching proper photographic techniques to crime scene personnel, or students interested in entering this, or a related field. The course involves classroom lecture on photography theory and concepts followed by hands-on exercises. Nikon® equipment will be provided, so all students are operating identical equipment. Note: Students should bring a new, unused 8GB or larger high-speed USB storage device if they would like to keep the images they expose during training.



The student will leave the course with:

- A high-level of understanding of digital cameras
- Techniques for capturing quality images under various conditions
- Acceptable standards for documenting crime scenes and physical evidence via photography

For Current Schedule:
Please visit www.sirchie.com
or call us at +1.919.554.2244





SIRCHIE[®]

Command Every Scene[™]

Email: international@sirchie.com

Phone: +1.919.554.2244

www.sirchie.com