

Surveillance Solutions



 **SIRCHIE[®]**
Surveillance
www.sirchie.com



Surveillance Solutions

When criminal activity occurs, there's rarely a one-size-fits-all solution for law enforcement to gather information through video surveillance. We offer a variety of flexible and turnkey surveillance solutions which give you the option to observe and monitor unfolding situations from anywhere at any time. Our products can face any scenario with you because they are:

- **Portable and adaptable.** We developed our surveillance solutions so you take them where you need them.
- **Used for manned or unmanned missions.** Our products give you the option to gather information remotely, over a long period of time, or conduct your mission at the location.
- **Controlled and viewed using any network** you want to use: WiFi, cellular, or additional secure networks. Our team can train you how to view and transmit data through all networks.
- **Covert or Overt.** At some events, an overt operation works but in others, covert surveillance is key. We have products for both types of operations so you're always prepared.



Covert Surveillance

VideGO Disguised Utility Pole Video Surveillance System

Integrating our VideGO Disguised Utility Pole Video Surveillance System into your community gives you the flexibility to work throughout your community undetected. Whether you are monitoring for an extended period or targeting specific activity, this system allows you to record video onsite, review remotely, and can be equipped with video management software for facial recognition and more.

Overt version also available



Complete System fits into the included Pelican® Carrying Case



No. PC5000IP

VideGO Disguised Utility Pole Video Surveillance System

Covert Surveillance

VideGO™ Capture Rooftop Carrier Surveillance System

Blending into your surroundings seamlessly is the critical element of conducting successful covert surveillance missions. This new surveillance system is ideal to move from vehicle to vehicle. You can conduct manned or unmanned operations using the Capture via Wi-Fi or an existing department cellular plan.



As a self-contained turnkey solution, the Capture uses popular rooftop cargo carrier models with:

- Four fixed-focus cameras powered through an Axis F44 with an included mobile broadband router to provide virtually 360 degrees of coverage around the vehicle in all four directions (forward, rear, driver side, passenger side)
- Convenient, hidden on/off button underneath the carrier to quickly turn the unit on or off

With this system, mount to your vehicle's rooftop rack, power on, and you are ready to go.

Use the VideGO Capture in locations where luggage carriers are common.

- Tourist locations
- Suburban regions
- Parks and recreational areas
- University campuses
- Highways and transit areas

Wherever and whenever you need highly portable, covert surveillance, the VideGO™ Capture is the perfect solution for you. Power your unit on and connect to the Capture via included Camera Companion software on your PC or mobile device to conduct your surveillance operation.

Axis Camera Companion Software Features:

- Easy and intuitive surveillance
- Secure remote access to video
- Mobile app for freedom of use (both Apple and Android)
- Quick, simplified system set-up

Use Included Axis Camera Companion Software on your PC or mobile device to view and control the camera feeds from anywhere via secure Internet connection.

You can link the Anywhere together with other systems via MESH network to execute multi-location surveillance operations.

- Flexibility
- Versatility
- Portability

Use existing department assets or rent vehicles or space to conduct cost effective surveillance operations that allow you to blend into your surroundings.

Covert Surveillance

VideGO™ Anywhere Portable Multi-Camera Surveillance System

This amazing new surveillance system gives you the ability to turn any vehicle, place, or location into a surveillance operation. You can conduct manned or unmanned operations using the Anywhere via Wi-Fi, existing department cellular plan, or MESH network.

As a self-contained turnkey solution, the Anywhere comes in a convenient, rugged case with:

- Four fixed-focus cameras (2 bullet style, 1 fish-eye, 1 pinhole) & one microphone powered through an Axis F44 with an included mobile broadband router.
 - o Cameras each come with a 39ft (12m) cable for easy positioning for your surveillance application.

With this system, you can position your cameras in any direction you need.

- Point all the cameras to the outside of your vehicle and you can turn any vehicle into a surveillance vehicle.
- Point all the cameras within the interior and you have a bait car system.
- Point them in any combination of interior/ exterior to meet your surveillance needs.
- Use the system in an office or hotel room for a short-term mission.

Wherever and whenever you need covert surveillance, the VideGO™ Anywhere is the perfect solution for you. Simply set up your camera configuration as desired and connect to the Anywhere via included Camera Companion software on your PC or mobile device to conduct your surveillance operation.



Axis Camera Companion Software Features:

- Easy and intuitive surveillance
- Secure remote access to video
- Mobile app for freedom of use (both Apple and Android)
- Quick, simplified system set-up
- Scalable and future proof

Available Options:

- Configure any combination of 4 from among Bullet Style, Fish-Eye, Pinhole Fixed Focal or Varifocal Cameras
- Add an additional PTZ Camera to the system

Covert Surveillance Vehicles

Blending your vehicle with your scenario

Blending into your surroundings is critical to conducting covert surveillance missions. We understand this need and deliver vehicles that include the latest surveillance technology and blend seamlessly into their surroundings. We help you to command every scene and gather the important information you need.

Our experts can repurpose any current vehicle in your fleet, department-seized, or donated vehicle into a surveillance vehicle. For new turnkey packages, our most popular platforms for disguised surveillance vehicles are pictured below. Sirchie Surveillance vehicles can be equipped with IP technology to conduct manned or unmanned operations with the ability to review and control the cameras via secure Internet connection giving you the flexibility that your mission requires at the time.

In addition, our vehicles can be integrated with other Sirchie Surveillance solutions to form a network for larger scale surveillance missions. Contact us today to discuss your needs and we will deliver the right surveillance solution to you.

We can turn nearly anything into a surveillance vehicle, but our most popular customizations are:



SUV



Vehicle Refurbishing

Give Your Existing Vehicle New Life!

Whether you have a seized vehicle that you would like to repurpose or a department vehicle with low mileage, high usage, we have the expertise and experience to breathe new life into your valuable vehicle assets.

With hundreds of projects completed, our team of skilled mechanics and tradesmen can perform expert updates to the interior and/or exterior of your vehicle. We will deliver the right solution and make it a simple, pain-free process for you. We have reconfigured evidence collection, surveillance vehicles, mobile command vehicles, hostage negotiation, alcohol enforcement vehicles, and much more.



Technology Updates. Outdated technology can hold you back. We will upgrade your technology and configure your space to maximize your efficiency and comfort.



Exterior Upgrades. Technology, storage, accessories, lighting, cameras, rooftop observation decks, awnings, and more. We deliver whatever you need on the exterior of your vehicle to maximize the use of this real estate.



More Room. Add additional square footage to the interior of your vehicle with motorized bumpouts. This much needed space can help extend the utility of your vehicle.



Interior Upgrades. Use your vehicle space more effectively and modernize your interior with new finishes and furniture.

Repurpose. Your department can take a seized vehicle or valuable asset that is being underused and breathe new life into it. There is no limit to what the Sirchie team can do for you. Contact us to discuss your project today.

Overt Surveillance

LowCam® VI110 Video UVIS System

Heavyweight UVIS protection in a lightweight, portable solution.

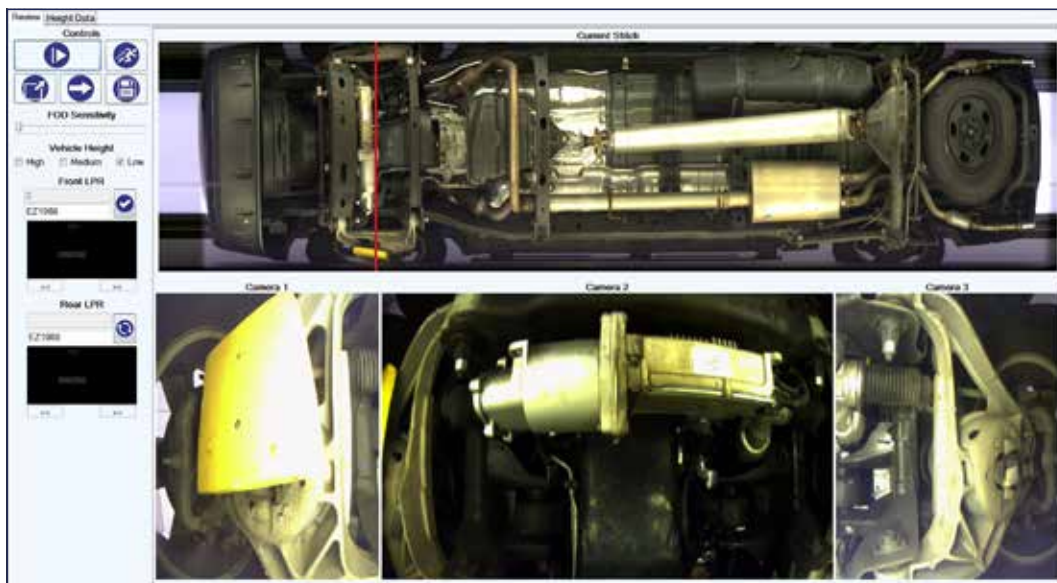
"We're a high-security facility with daily repeat traffic. We needed a UVIS that was extremely easy and quick to deploy, but with all the capabilities of the best-equipped systems."

- Satisfied Advanced Detection customer

Next generation undercarriage imaging offers unique inspection capabilities by combining the benefits of multi-camera view images and real time video playback. Embedded front and rear license plate recognition (LPR) and available Foreign object Detection (FoD) provide the LowCam VI110 with the capabilities of the largest and most expensive UVIS systems in an amazingly light and portable solution.

The VI110 is ideal for high-security installations with frequent repeat traffic. Armed with LPR and database integration, it identifies a returning vehicle, accesses its most-recent inspection, presents a side-by-side comparison view and silently alerts personnel to a potential threat—all in real time and from a safe standoff position.

Designed with Advanced Detection's legendary toughness and intelligence, the VI110 delivers best-in-class confidence and flexibility when and where you need it.



Overt Surveillance

Deployable Video Surveillance System

Set up & turn on Sirchie's new Deployable Video Surveillance System to observe and record wherever you need the ability to monitor and recall activity via a secure connection.

Ensuring security and safety through proper surveillance is becoming an increasingly difficult task for law enforcement, security, event promoters, and any entity with temporary surveillance needs. The new Deployable Video Surveillance System (DVSS) from Sirchie will expand your surveillance capability to ensure comprehensive coverage.

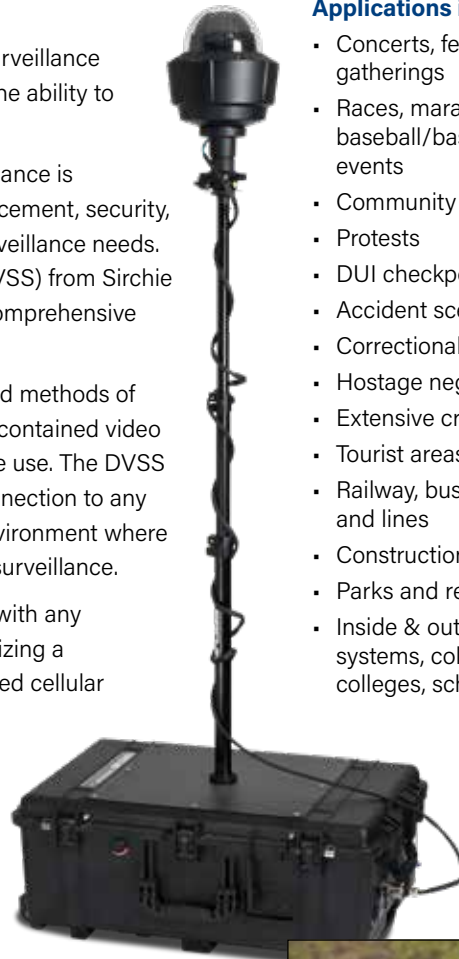
Developed to provide a versatile addition to standard methods of observation and recall, the DVSS is a portable, self-contained video surveillance system that can be deployed for remote use. The DVSS streams live video via secure Internet or cellular connection to any Internet-enabled device. Suitable in virtually any environment where there is a need for a temporary, secure solution for surveillance.

The camera can be viewed and controlled via WiFi with any connected device, or through a cellular network utilizing a department provided USB modem or Sirchie provided cellular modem. Control and viewing are easily configured through a browser on a computer or most mobile devices.

The video is always being recorded to an SD card, so even with network interruptions, critical footage is not lost. In addition, streaming video can be recorded on any device connected to the camera with storage capability.

System features:

- 720HD PTZ (Pan, Tilt, Zoom) Camera with
 - o 360 degree swivel capability
 - o 300 ft. range (Wi-Fi configuration)
 - o 30X zoom capability
 - o Mounted on a secure adjustable monopod that can reach a height of approximately 7 ½ feet
 - o Camera has SD card recording and comes with a 32GB SD card
 - o Operates in extreme low-light environments (down to 0.001 lux)
- Approximately 50 hours of battery time on a full charge
 - o Recharge time is approximately 5-6 hours and should be plugged into a 15 amp 110V outlet
- Entire system is self-contained in a weather-resistant, rugged rolling case for easy deployment, transport, and storage (system weighs approximately 130 lbs.)
 - o Exterior dimensions: 30.75" x 20.5" x 11.62" (78.1cm x 52cm x 29.5cm)



Applications include but are not limited to:

- Concerts, festivals, parades, and other public gatherings
- Races, marathons, golf tournaments, football/baseball/basketball games, & other sporting events
- Community events, conventions, conferences
- Protests
- DUI checkpoints
- Accident scenes
- Correctional facilities
- Hostage negotiations
- Extensive crime scenes
- Tourist areas, beaches, popular destinations
- Railway, bus depots, and other transportation hubs and lines
- Construction Sites
- Parks and recreational sites
- Inside & outside companies, churches, hospital systems, colleges, universities, community colleges, schools, during events



Deploy within minutes anywhere, and control from anywhere.



Control system via WiFi, department-provided cellular network, or MESH network.

No. DVSS1000

Deployable Video Surveillance System

Overt Surveillance

VideGO Eyes in the Sky Video Surveillance System

Establish a strong presence and conduct surveillance operations from 25 feet up in the air with our turnkey VideGO Eyes in the Sky Trailer Video Surveillance System. Use the power of 2 Pan, Tilt, Zoom (PTZ) Cameras with 30X Optical-12X Digital Zoom with onboard recording. These tower video trailers can operate as a single unit or be networked through various platforms to cover larger events or multiple areas.

Features:

- Remote viewing and recording
- On-board Network Video Recorder (NVR)
- Remote operation of PTZ cameras
- Multiple networking options (WiFi, Cellular, Mesh)
- Battery, Solar, Gas Options
- Thermal Camera available
- Optional Video Management Software with Advanced Analytics (Perimeter Intrusion, Crowd Detection, etc.)



Video Intelligence Analytics

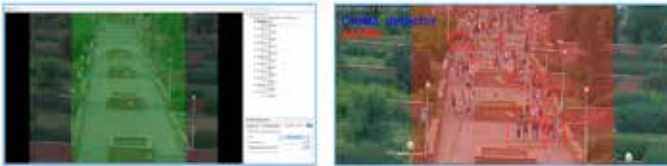
Situational Video Analytics

Automatic detection of potential threats

Allow public safety and security organizations the ability to transform raw video data into meaningful and actionable information that is the core foundation towards the protection of people and infrastructure. The end result is enhanced public safety and property security.

Crowd Detection

Presence of a certain number of people in a defined area during a fixed time interval. All are adjustable parameters. *Can be used with video shot with a pan, tilt, zoom (PTZ) camera.*



Object Left Behind

Materials abandoned in a controlled area for an indeterminate amount of time. *Best used with video shot with a static camera.*



Intrusion Detection/Perimeter Crossing

Monitors area where authorized entry is required. *Can be used with video shot with a pan, tilt, zoom (PTZ) camera.*



Loitering Detection

Monitors the length of time an individual stays in a zone longer than a specified length of time. *Can be used with video shot with a pan, tilt, zoom (PTZ) camera.*



Running Detection

Monitors the length of time an individual stays in a zone longer than a specified length of time. *Can be used with video shot with a pan, tilt, zoom (PTZ) camera.*



License Plate Recognition (LPR)

Best used with video shot with a static camera.

- Gather LPR data from existing cameras, portable systems, UVIS
- LPR can gather license plate data from multiple lanes using a single camera
- Template based for higher accuracy
- Recognizes plates from all US states and most foreign countries
- LPR data can be searched to retrieve snapshot, video, time/date information
- Set watch lists (ex. whitelist, blacklist) and customize alerts



Facial Recognition

Best used with video shot with a static camera.

- Use existing databases
- Create your own databases
- Results in milliseconds



Thermal Imaging

Handheld Devices

The most advanced handheld thermal imaging cameras on the market today offer powerful detection in an easy to use, rugged package. Self-contained with high-performance thermal sensors, the Reveal handhelds are perfect if you do not want to connect a device to your phone. Each Reveal handheld imager also has a built-in 300 lumen LED flashlight.



RevealPro

The RevealPRO is the most powerful and versatile handheld version with a range from 6 inches to 1,800 feet and the most powerful sensor.

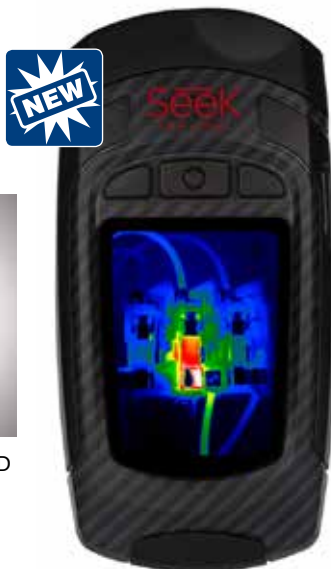
Features include:

- Adjustable Emissivity and Radiometric Files
- Easily documents and saves thermal images directly to the 4GB internal hard drive or a MicroSD card
- A frame rate greater than 15 frames per second for a smooth image display while moving and scanning
- 32 degrees field of view
- Long-lasting rechargeable battery of up to 5 hours

A <9 Hz version is available for applicable countries.



Reveal Pro features a 300 lumen LED flashlight



No. STRQAAAX **Reveal Pro (Fast Frame), >15 Hz frame rate**

Reveal XR (Long Range)

The Reveal Long Range gives you up to 900 ft of detection distance at a frame rate of 15 frames/second for smooth scanning; ideal for outdoor applications. Its other features are:

- A field of view of 20 degrees
- Long-lasting rechargeable battery of up to 10 hours.
- Document your inspection: save thermal images directly to the included MicroSD card

A <9 Hz version is available for applicable countries. Available in black or camo



Reveal XR features a 300 lumen LED flashlight

No. STRTABAX **Reveal XR (Long Range), Fast Frame, black**

No. STRTACAX **Reveal XR (Long Range), Fast Frame, camo**

Reveal WV (Wide View)

The Reveal Wide View has 36 degrees field of view with a frame rate of 15 frames/second, perfect for scanning an area quickly. With this device, you'll have:

- Detection distance of up to 500 ft
- Long-lasting rechargeable battery of up to 10 hours.
- Document your inspection: save thermal images directly to the included MicroSD card

A <9 Hz version is available for applicable countries. Available in blue



Reveal WV features a 300 lumen LED flashlight

No. STRWAAAX **Reveal WV (Wide View), fast frame (>15 Hz)**

Thermal Imaging

Smart Device Camera Attachment

The Compact series offers powerful thermal imaging capability controlled through an app on your Apple or Android device. Search and capture images easily and store on your mobile device.



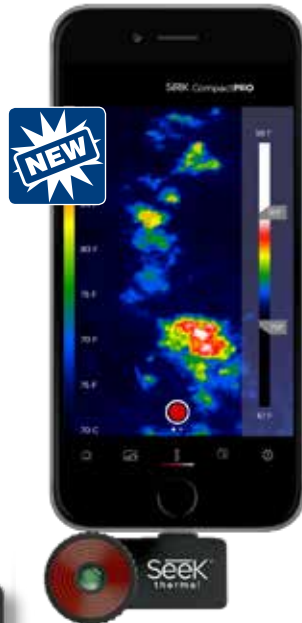
CompactPRO

The most powerful and versatile option, the CompactPRO, gives you a combination of long range and wide field of view with the most powerful sensor available.

Features include:

- Adjustable emissivity and radiometric files
- Ability to focus your lens for quick identification
- Uses the power and display of your smartphone
- A detection distance of up to 1800 ft
- Possible unlimited storage through your phone
- A thermal sensor of 320 x 240

A <9 Hz version is available for applicable countries.



Available for top iPhone and Android models

No. STLQAAAX CompactPRO, fast frame (for iPhone)
No. STUQAAAX CompactPRO, fast frame (for Android)

Compact XR (Long Range)

With up to 1,800 ft of detection distance and a 20 degree field of view, you'll have an ideal device for outdoor applications. Additional features are a thermal sensor of 206 x 156.



Available for top iPhone and Android models



No. STLTAAX Compact XR (Long Range), for iPhone
No. STUTAAX Compact XR (Long Range), for Android

Compact WV (Wide View)

You'll be able to quickly scan up to a 36 degree field of view with a detection distance of 1,000 feet. Additional features are a thermal sensor of 206 x 156.



Available for top iPhone and Android models



No. STLWAAA Compact WV (Wide View), for iPhone
No. STUWAAA Compact WV (Wide View), for Android



Keeping your personnel safe so they can Command Every Scene®

As the opioid epidemic grows and becomes more dangerous to law enforcement and first responders, our goal is to make you as safe as possible.

NARKsafe™ solutions are designed to help keep you and your team safe while handling, packaging, transporting, testing, and storing potential fentanyl, carfentanil, acetyl-fentanyl, and other dangerous substances.

NARKsafe™

Contact us today at +1.919.554.2244 or
international@sirchie.com to learn more.

 **SIRCHIE®**
Forensics

Protect Everyone.



*One Adjustable Suit to Fit and Protect
Virtually Everyone!*

Contact us today to schedule a demo
+1.919.554.2244 or international@sirchie.com





 **SIRCHIE**[®]
Command Every Scene[®]

Email: international@sirchie.com

Phone: +1.919.554.2244

www.sirchie.com