

---

## TECHNICAL INFORMATION

### EZID™ Footwear Impression System

#### Catalog No. EZID400

---

#### INTRODUCTION

Up until now, the choices for recording actual shoe print evidence to compare against lifted impressions have been limited. Two of the more popular methods involved rolling fingerprint ink on the sole of the shoe and transferring it to paper or applying black fingerprint powder to the sole, and then transferring it to an adhesive-coated surface. Both methods create quite a mess both before taking the impression and cleaning-up afterward.

The EZID™ system consists of an EZID ink, nonwoven pad and pre-sensitized impression cards. More than 200 footwear impressions can be taken from a single EZID™ pad. And since no ink is visible on the surface it is applied to, no cleanup is necessary. The reverse side of the impression cards are printed with an impression evidence report for recording all case information to identify the impression.

The EZID400 kit is the ideal tool for use in the crime laboratory, at the crime scene and is excellent for elimination of prints at crime scenes. It is simple to use and can record even the smallest details of wear and

---



tear found on footwear. The most outstanding feature is that there is no messy cleanup after impressions are taken, or accidental tracking of visible ink or fingerprint powder after the impression is taken.

## PROCEDURE

The EZID™ Footwear Impression System was designed with a threefold purpose:

(1) Crime scene shoe impression elimination; (2) Crime scene shoe impression from suspects; and (3) Crime scene evidence shoe impressions.

### Initial Preparation of EZID402 Pad

1. Open EZID case and remove nonwoven pad.
2. Apply one 15ml bottle of EZID403 solution evenly across the bottom of the case.
3. Place the nonwoven pad into the case, and move back and forth to spread out solution.
4. Apply the second bottle of EZID403 solution evenly across the top of the nonwoven pad.
5. Use a paper index or plastic card to spread the solution evenly across the surface.
6. Allow 15 minutes for the solution to completely penetrate.
7. Impression pad is ready to use.

### Instructions for Use

1. Fill out the necessary information on the backside of the EZID402C Preprinted Inkless Shoe Impression Card (Fig. 1).
2. Prior to processing, clean the soles of suspect's shoes. Keep all loose particles as evidence in an evidence container.
3. While wearing the shoes to be imprinted, have suspect place one foot on the EZID402 Inkless Impression Pad inside the case, rolling from heel-to-toe with sufficient pressure (Fig. 2).



FIGURE 1

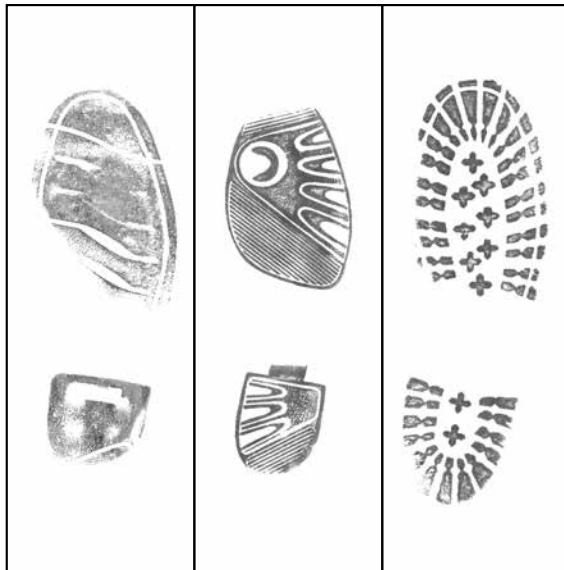


FIGURE 2

4. Place the shoe impression card on the floor with unprinted side up. Have suspect place the same foot on top of the impression card (Fig. 3), rolling from heel-to-toe. *NOTE: Allow 30-60 seconds for print to begin to develop; 5 minutes for full development.*



FIGURE 3



Sample shoe impressions made with No. EZID400.

## Cleaning

If the membrane becomes soiled from repeated impressions, simply take a lint free cloth and clean by wiping the surface.

## Rejuvenating:

If rejuvenating an old EZID402 pad, apply 1.5ml (approximately 35 drops) of EZID403 evenly across the surface of the membrane, and proceed as directed under "Initial Preparation of the EZID402 Pad".

## References:

Guide for the Preparation of Test Impressions from Footwear and Tires: SWGTREAD. [http://www.swgtread.org/images/guidelines/published/05\\_test\\_impressions.pdf](http://www.swgtread.org/images/guidelines/published/05_test_impressions.pdf), Jan. 5, 2011.

## **EZID400 CONTENTS:**

- 1- EZID402 Inkless Impression Pad, 6.75" x 16.75" (17.1cm x 42.5cm); Good for 250-300 Impressions
- 2 - EZID403 15ml Shoe Impression Rejuvenating Ink
- 1- EZID402C Preprinted Inkless Shoe Impression Cards, 5.5" x 16.5" (14cm x 41.9cm), 200 pk.
- 1- KCP212 Molded Polypropylene Carrying Case; Dimensions: 17.5" x 7.75" x 2.375" (44.4cm x 19.7cm x 6cm)