

Digital Evidence Photo System DEPS100, DEPS100M



Background and Purpose

Sirchie's most complete crime and accident scene recording outfit is constructed around a full-featured, high-resolution digital camera with zoom capability. This camera offers many of the features found on most digital cameras:

- Aperture and shutter priority
- Auto focus
- Manual and automatic exposure
- Built-in electronic flash

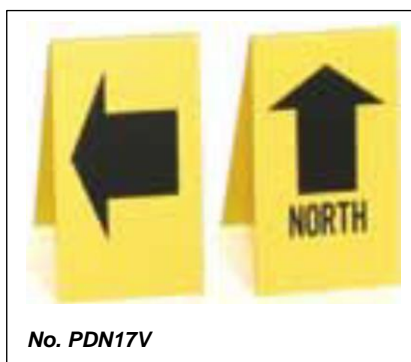
The camera features a back-lighted, bright LCD screen that permits real time viewing of the scene, facilitating framing and focus. *For more detailed information on camera features and operation, please refer to the camera manufacturer's operator's manual.*

The DEPS100 includes the UPS100 Universal Photo Copy Stand with English scales and is housed in a rugged, molded copolymer carrying case with a pre-cut molded insert for shock-resistant, organized storage of kit components shown above. The DEPS100M includes the UPS100M with metric scales.

USE OF THE EVIDENCE PHOTO MARKERS

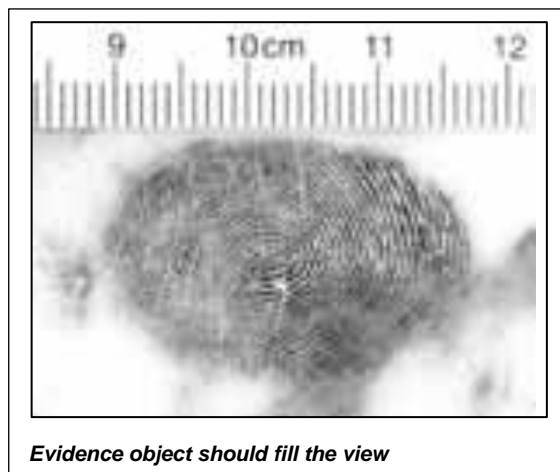
Two styles of photo evidence markers are included in the DEPS100 kit: No. PEN15V Photo Evidence Numbers and No. PDN17V Direction Indicators (tent-style), and No. PMNM9 Reversible Number Placards. The tent-style numbers and indicators are free-standing and are placed in the scene to indicate the location of various kinds of evidence.

The photo evidence placards are used in conjunction with one of the placard holders shown. The placard holders are slotted along one side to permit insertion of the appropriate number placard.



PHOTOGRAPHY CONSIDERATIONS

When photographing small items of evidence such as fingerprints, blood spatters, broken glass, etc., the camera should be placed in the Macro (“close-up”) mode (refer to your camera Operator’s Manual for instructions regarding setting it in Macro mode). Zoom the lens into the scene until the evidence object fills the view (example below). Be certain to include a scale in the scene. Use either the No. PPS400 or No. PPS402 Photo Evidence Scales.



USING THE UNIVERSAL EVIDENCE PHOTO STAND

The Universal Evidence Photo Stand was developed primarily for the recovery of impression evidence, but it may serve to assist in recording many other forms of physical evidence as well. The unit can be assembled and disassembled in seconds and is ideal for use at the crime scene or in the crime laboratory. The stand is compatible with most light-weight cameras.

Unpacking/Set-up

Upon receipt of the unit, carefully inspect the shipment for completeness and any transit damage. These components are shown on the top of the next page. Report any damage to the delivering carrier and notify the Customer Service office at the factory.

To avoid any possible damage to the impression being photographed, assemble the unit some distance away prior to placement. Note: Some cameras have a tripod mounting that is not directly in line with the lens. Additional mounting holes have been provided on the Main Frame Support (A) that permit repositioning the Tripod Extension Arm Mount (F) on the main frame. Remove the screw securing the mount and reposition it as required.

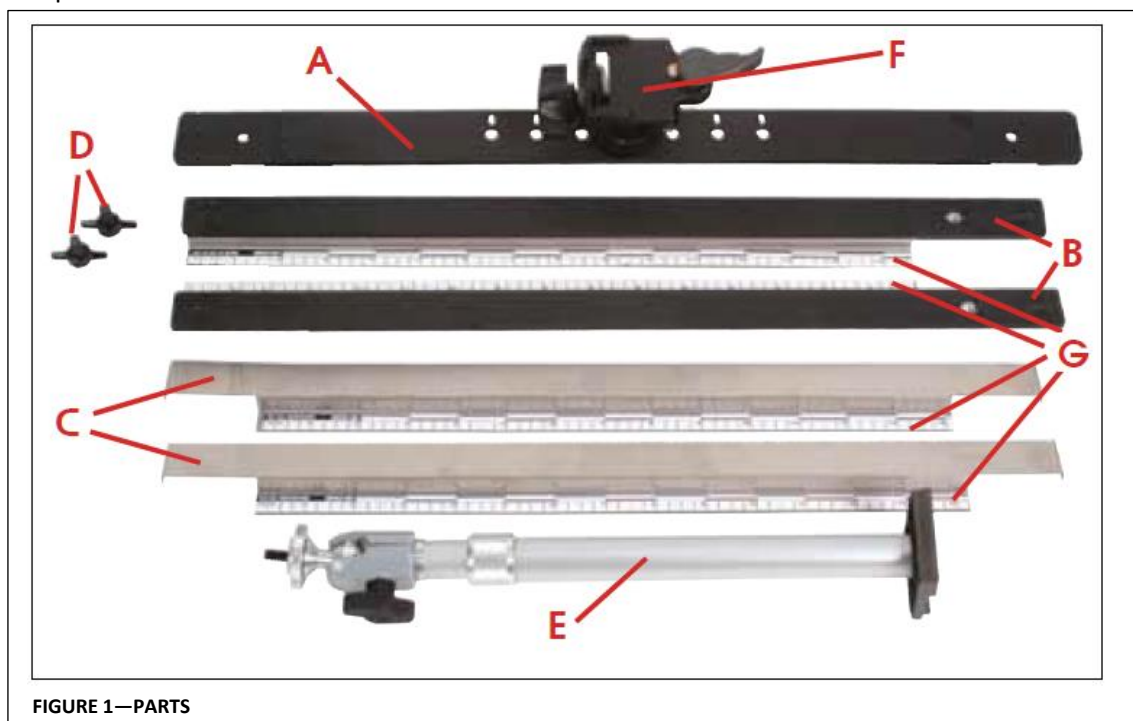


FIGURE 1—PARTS

- | | | |
|--------------------------------|---------------------------------|--|
| 1- (A) Main Frame Support | 2- (B) Side Supports | 2- (C) Adjustable Scale Supports |
| 2- (D) Thumbscrews | 1- (E) Adjustable Extension Arm | 1- (F) Tripod-type Extension Arm Mount |
| 1- (G) 4 White Magnetic Scales | | |

Controls / Operation

1. Attach the two Side Supports (B) to the Main Frame Support (A) using the Thumbscrews (D). Do not over-tighten. Note that the Main Frame Support is notched where the Side Supports are attached (Fig. 2).
2. Attach the camera to be used to the threaded ¼-20 screw on top of the Adjustable Extension Arm (E). Use the threaded lock nut to secure the position of the camera.
3. Place the base of the extension arm in the tripod-type mount, snap it in to lock it in position (Fig. 3).
4. Place the assembled unit over the impression to be recorded as shown in Fig. 4.



FIGURE 2



FIGURE 3

5. Extend the Extension arm to a point where the camera lens is directly over the center of the evidence. Lock the extension arm in place using the thumbscrew at the base swivel and the knurled locking collar.
6. Position the camera so that the lens is at a 90° angle above the evidence.
7. Position the Adjustable Scale Supports as needed. Note: When using a flash, use one adjustable scale on the side opposite the flash in order to avoid introducing a shadow from the scale.
8. Adjust the zoom on the camera so that at least two of the photo scales are visible. Where possible, avoid using too much of the wide-angle lens setting as this will cause perspective distortion.



FIGURE 4

FLASH PHOTOGRAPHY

In most instances, it will be necessary to use an electronic flash (user supplied) when recording three dimensional evidence such as footprints and tire tracks. A flash provides more control over the lighting and will create the necessary shadow detail. A minimum of three photos should be taken with the flash held at different positions as shown above. This will assure sufficient shadow detail in the impression (see Figs. 5A-

100 HUNTER PLACE, YOUNGSVILLE, NC 27596 USA

Ph: (919) 554-2244, (800) 356-7311 • Fax: (919) 554-2266, (800) 899-8181

• Web: www.sirchie.com • Email: sirchieinfo@sirchie.com

5C below). When photographing two-dimensional evidence such as dust prints, one or two photos may be adequate. The flash should be held 3-4 feet from the impression and at an angle of 15° to 30° above the surface—depending upon the depth of the impression.



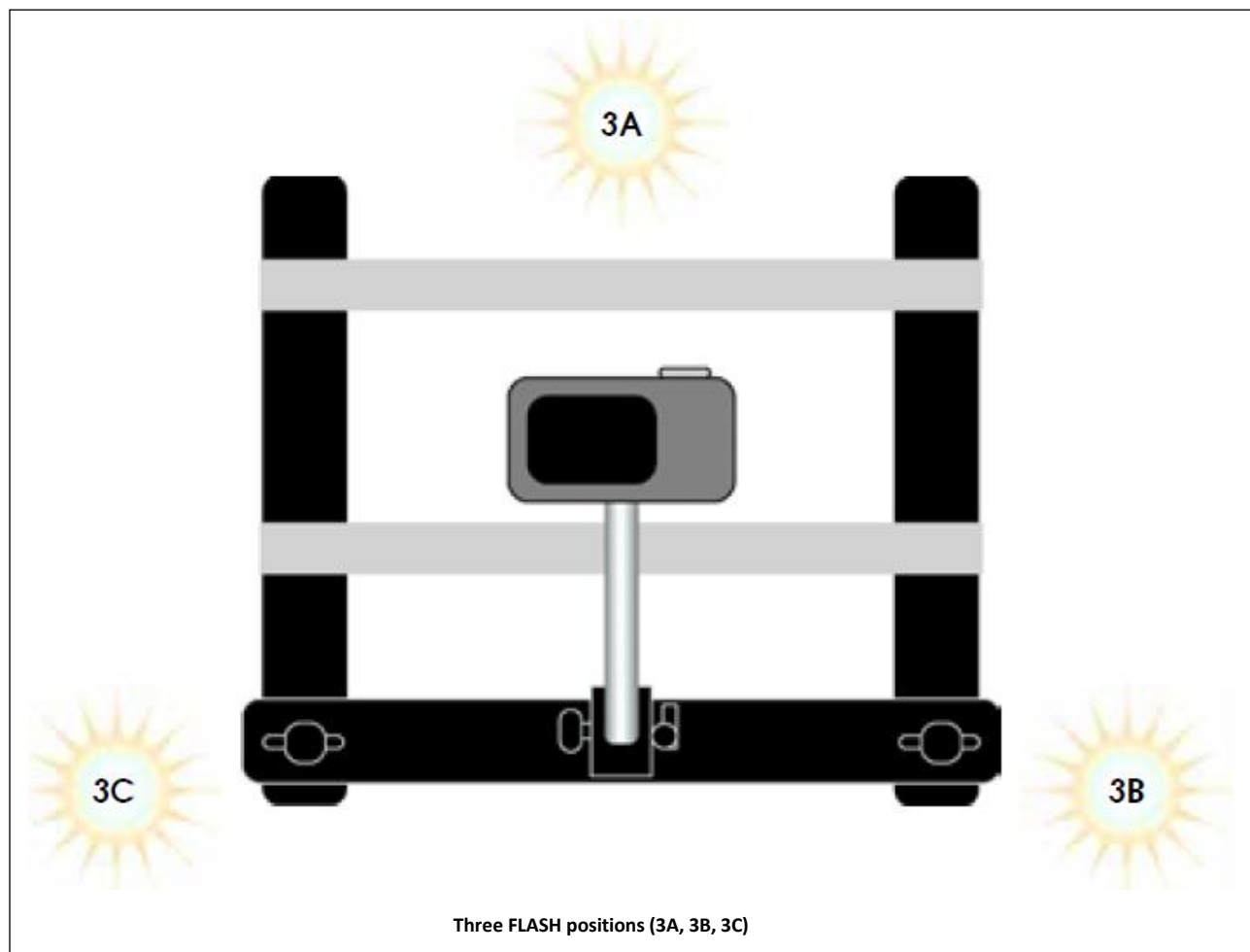
FIG. 5A—Flash from front.



FIG. 5B—Flash from right.



FIG. 5C—Flash from left.



100 HUNTER PLACE, YOUNGSVILLE, NC 27596 USA

Ph: (919) 554-2244, (800) 356-7311 • Fax: (919) 554-2266, (800) 899-8181

• Web: www.sirchie.com • Email: sirchieinfo@sirchie.com

DEPS100M CONTENTS:

- 1 - Digital Crime/Accident Scene Camera - Canon PowerShot G1-X MarkII
- 1 - UPS100M Universal Evidence Photo Stand w/Metric Scales
- 1 - PEN15V Vinyl Crime/Accident Photo Evidence Numbers 1 -15 (Tents)
- 1 - PDN17V Vinyl Crime/Accident Photo Direction Indicators (Tents)
- 1 - PMNM 4"x4" Reversible Number Placards Numbers1 -48
- 1 - 7.52" high Number Placard Holder
- 1 - 13.25" high Number Placard Holder
- 1 - PPS400 6" Photo Evidence Scales (black on white) 10 ea.
- 1 - PPS402 6" Photo Evidence Scales (white on blue), 10 ea.
- 1 - DEPS100CC Molded Copolymer Carrying Case w/precut molded insert
Dimensions: 28" x 17" x 10.5"

DEPS100 CONTENTS:

- 1 - Digital Crime/Accident Scene Camera - Canon PowerShot G1-X MarkII
- 1 - UPS100 Universal Evidence Photo Stand w/English Scales
- 1 - PEN15V Vinyl Crime/Accident Photo Evidence Numbers 1 -15 (Tents)
- 1 - PDN17V Vinyl Crime/Accident Photo Direction Indicators (Tents)
- 1 - PMNM 4"x4" Reversible Number Placards Numbers 1 -48
- 1 - 7.52" high Number Placard Holder
- 1 - 13.25" high Number Placard Holder
- 1 - PPS400 6" Photo Evidence Scales (black on white) 10 ea.
- 1 - PPS402 6" Photo Evidence Scales (white on blue), 10 ea.
- 1 - DEPS100CC Molded Copolymer Carrying Case w/precut molded insert
Dimensions: 28" x 17" x 10.5"