
TECHNICAL INFORMATION

Illuminated Comparator Catalog Nos. 365M, 365M220

INTRODUCTION

Our newly designed 365M Illuminated Comparator was designed to provide exceptional service under laboratory conditions. The device is ideal for locating hairs and fibers on clothing and similar items, questioned document analysis, and classifying and comparing fingerprints. The unique design reduces eyestrain by providing a full 2.5X, glass magnification lens, and the wide-field (4.25" diameter) view permits examination of larger areas than most magnification systems.

The combination magnifier/lamp head is attached to a flexible gooseneck assembly capable of rotating more than 180°. Maximum viewing height from base to lens is approximately 9". The working area



is constructed of long wearing Formica® measuring 12.25" x 18". Illumination is provided by a 4-watt cool white fluorescent lamp (No. KCP218). The 365M is powered by a 110V AC power supply. A 220V AC version is available by ordering No. 365M220.

PROCEDURE

Setup

Place the unit on a sturdy table or desktop. The first step is to install the 4-watt cool white fluorescent lamp. Raise the lamp head to a position that exposes the underside. Install the lamp by sliding both ends into the sockets. Twist the lamp to securely lock it into the housing (Fig. 1). Next, connect the end of the power cable to the jack on the rear of the working surface (Fig. 2). Connect the power supply to a convenient AC receptacle.



FIGURE 1



FIGURE 2

Usage

The 365M Illuminated Comparator may be used to examine a variety of evidence items. While it is primarily designed for the classification and comparison of fingerprints, the unit may be used to examine pieces of clothing for microparticle evidence such as hair and fibers or for magnifying questioned docu-

ments. Place the item to be examined on the working surface and turn on the power switch located on the right hand side of the lamp head (Fig. 3). Adjust the lamp head to afford the best view/magnification and proceed with your examination. Figure 4 demonstrates the user's view when the lamp/magnifier head is positioned over a fingerprint card.



FIGURE 3

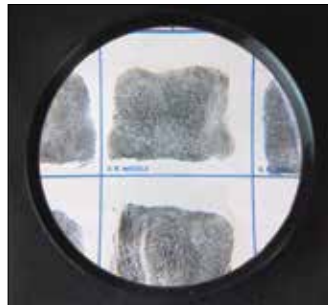


FIGURE 4

MAINTENANCE

WARNING: Be certain to disconnect the power supply prior to performing any maintenance.

Cleaning

Keep all surfaces clean using a damp cloth and mild soap solution. **DO NOT** use commercial cleaners or solvents as they may damage the surfaces. Standard glass cleaners may be used to clean the magnifier lens.

Lamp Replacement

Replacement lamps are available by ordering No. KCP218. Grasp the lamp between your thumb and forefinger and twist in either direction (approximately 45-degrees). Lift the lamp from the housing. Install the new lamp by sliding both ends into the sockets. Twist the lamp to securely lock it into the housing. No other field maintenance is recommended.

SIRCHIE®



100 HUNTER PLACE, YOUNGSVILLE, NC 27596 USA

919-554-2244 • 800-356-7311

www.sirchie.com