

# Introduction to Specialized Police Vehicles

As a single source supplier who manufactures both criminal investigation equipment and vehicles, **SIRCHIE®** provides specialized police vehicles that meet the real life, in-field needs of our customers. This unrivaled experience with all aspects of law enforcement vehicles is what makes SIRCHIE the innovative leader in such a demanding and constantly changing market.

## What separates SIRCHIE from the competition?

- Custom floor plan design at no charge.
- In-house custom fabricated cabinetry to meet customer specifications, house department supplied equipment and SIRCHIE products.
- Lifetime technical phone support.
- On going available upgrades and refurbishing programs.
- Single source provider of products, vehicles and training.

The Vehicle Division of SIRCHIE is housed in a 22,000 square foot facility in Medford, New Jersey. The facility is solely dedicated to the construction of Special Purpose Police Vehicles and their related equipment. Our manufacturing facility has full sheet metal, welding, wood working, upholstery, electronics and fabrication shops that produce 95% of all items installed in the vehicles we manufacture. It is this in-house concept of production that allows us to produce vehicles to the many varied requirements of our customers and provide the highest quality product.

***Many vehicles  
now on GSA!***



***For detailed specifications and  
grant writing assistance call:  
+1.609.654.7869***

## Specialized Police Vehicles



## ***EDUCATION OPPORTUNITY!***

We offer a 40-hr, on-site course that teaches law enforcement professionals the essentials of the collection, processing and preservation of evidence.



***For more information see  
the Training Section of this  
catalog or visit our website at  
[www.sirchie.com](http://www.sirchie.com)***

## Specialized Police Vehicles

**SIRCHIE®** develops Vehicle Cabinet and equipment packages for those agencies who want to outfit SUVs or full size Cargo Vans already in their fleet.

### ECM100 SUV Evidence Collection Module is Supplied with:

- Professional Sketch Kit
- Anti-Putrefaction Mask Kit
- Ultraviolet Kit
- Latent Print Kit
- Evidence Packaging Kit
- (5) Primer Residue Collection Kits
- Master Shake-N-Cast Kit
- TexturLift™ Mikrosil Casting Kit
- (3) DNA Evidence Collection Kits
- Master Narcotics Analysis Kit
- Standard Photo Documentation Kit
- Hand Held Metal Detector
- Nylon Rope 100 ft.
- Permanent Recovery Magnet
- Barrier Tape Dispenser
- Barrier Tape 1,000 ft.

### THE VBS100 COMES EQUIPPED WITH THE FOLLOWING:

- Professional Sketch Kit
- Rechargeable Evidence Vacuum Kit
- Hand Held Metal Detector
- Recovery Magnet & 100 ft. Rope
- Anti-Putrefaction Mask Kit
- MegaMaxx Alternate Light Source Kit
- Theft Detection Kit
- Latent Print Kit
- Evidence Packaging Kit
- (5) Primer Residue Collection Kits
- Cyanowand Cyanoacrylate Fuming Kit
- Master Shake-N-Cast Impression
- TexturLift™ Mikrosil Casting Kit
- Master Blood Test Kit
- Seminal Fluid Test Kit
- (3) DNA Evidence Collection Kits
- Master Narcotics Analysis Kit
- Standard Photo Documentation Kit
- Barrier Tape Dispenser
- Barrier Tape 1,000 ft.
- Extension Cord Reel 100 ft.

**FOR TRUCK FREIGHT  
QUOTES CALL:  
1-800-545-7375**

**410**

## Evidence Collection Cabinet Packages



Facing the Front



Facing the Rear

### EVIDENCE COLLECTION MODULE

The Evidence Collection Module was developed for use in the most popular Sport Utility Vehicles including the Special Service Packages offered from Ford, Chevrolet, and Dodge. Provided with a complete assortment of field kits, these units are easily installed in department owned vehicles. Modules are provided with three (3) evidence storage compartments equipped with Medeco high security, virtually pick proof locks with patented key control to prevent unauthorized duplication of keys. Locking key is slipped through the slot and only removed by the property custodian who retains the master key.

### OPTIONAL KITS

- Rechargeable Evidence Vacuum Kit
- MegaMaxx Alternate Light Source Kit
- Cyanowand Cyanoacrylate Fuming Kit
- Master Blood Test Kits

CATALOG NO.	DESCRIPTION	PRICE	GSA
ECM100	Evidence Collection Module w/ Kits	\$5,995.00	
ECM100-w/o	Evidence Collection Module w/o Kits	\$3,875.00	

### VAN-BASED SHELVING

SIRCHIE®'s Van-Based Shelving Package provides an easy, do-it-yourself shelving set for department installation. The unit can be purchased with or without a full complement of evidence collection kits. The perfect solution for today's ever tightening budgets.



### FEATURES:

- Lightweight, adjustable molded shelving to house supplied evidence collection field kits and existing department equipment.
- Shelves can hold up to 250 pounds and are impact resistant and rust proof.
- Formica report writing desk provided with a portable stool.

CATALOG NO.	DESCRIPTION	PRICE	GSA
VBS100	Van-Based Shelving Package w/Kits		
VBS100-w/o	Van-Based Shelving Package w/o Kits		



# Evidence Collection Vehicles

# Specialized Police Vehicles

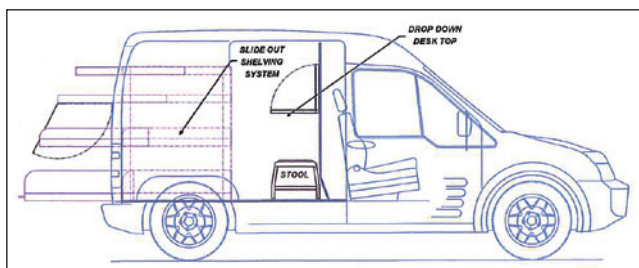
## ECV100/TC

This new Evidence Collection Vehicle offers versatility, comfort, and efficient use of space with slide out shelving, fold-down desk, dry erase board and a complete line of forensic field kits.



### FEATURES:

- *Lightweight shelves support up to 300 lbs each.*
- *Easy one-touch release locking shelves.*
- *Supplied portable stool for use at fold-down work top.*



ECV100/TC Street-side Interior View

## MCL100/E (Expedition) or MCL100/T (Tahoe) not shown

The MCL100/E First Response SUV is an excellent "take home" vehicle that allows for quick response to crime scenes. Investigators can immediately secure access to crime scenes where fragile evidence such as latent prints, blood evidence and gunshot residue may be compromised. More pleasurable as a daily driver and more fuel efficient than a larger unit, SIRCHIE®'s First Response SUV not only provides the means to act quickly and ensure crime scene integrity, but also heighten officer safety by making the necessary protective equipment, lighting and communications readily available.



### FEATURES/EQUIPMENT:

- *Auxiliary Battery*
- *1000 Watt Inverter*
- *Battery Charger*
- *120V AC Duplex Outlets*
- *12V DC Power Points*
- *Rechargeable Police Duty Flashlight*
- *(2) 500 Watt Portable Flood Lights*
- *Available in 2WD and 4WD*



Rear Hatch



View w/2nd Seat Folded

Phone: +1.609.654.0777 Fax: +1.609.654.7869

## THE ECV100/TC COMES EQUIPPED WITH THE FOLLOWING:

- Professional Sketch Kit
- Rechargeable Evidence Vacuum Kit
- Hand Held Metal Detector
- Recovery Magnet & 100 ft. Rope
- Anti-Putrefaction Mask Kit
- MegaMaxx Alternate Light System
- Theft Detection Kit
- Latent Print Kit
- Evidence Packaging Kit
- (5) Primer Residue Collection Kits
- Cyanowand Cyanoacrylate Fuming Kit
- Master Shake-N-Cast Impression
- TexturLift™ Mikrosil Casting Kit
- Master Blood Test Kit
- Seminal Fluid Test Kit
- (3) DNA Evidence Collection Kits
- Master Narcotics Analysis Kit
- Standard Photo Documentation Kit
- Barrier Tape Dispenser
- Barrier Tape 1,000 ft
- Extension Cord Reel 100 ft.

## MCL100E CRIME SCENE KITS:

- Master Crime Scene Sketch Kit
- Investigation Mapping Kit
- Evidence Collection Bag & Sealing Kit
- Master Expert Latent Print Kit
- Bluemaxx Patrol Kit
- Master Hardcore & Liquid Silicone Casting Kit
- Durocast Impression Compound
- Cyanowand Cyanoacrylate Fuming Kit
- Master Narcotics Testing Kit
- Ultraviolet Kit
- (3) DNA Evidence Collection Kits

## CRIME SCENE EQUIPMENT:

- 100' Hank Polypropylene Rope
- Hand Held Metal Detector
- Military Type Folding Shovel
- Barrier Tape and Dispenser
- Metal Toolbox with Drill & Hand Tools.



## Specialized Police Vehicles

### THE ECV100 INCLUDES THE FOLLOWING FORENSIC KITS:

- Professional Sketch Kit
- Rechargeable Evidence Vacuum
- Hand Held Metal Detector
- Recovery Magnet & 100 ft. Rope
- Anti-Putrefaction Mask Kit
- MegaMaxx Alternate Light System
- Theft Detection Kit
- Latent Print Kit
- Evidence Packaging Kit
- (5) Primer Residue Collection Kits
- Cyanowand Cyanoacrylate Fuming Kit
- Master Shake-N-Cast Impression Kit
- Texture Lift Mikrosil Casting Kit
- Master Blood Test Kit
- Seminal Fluid Test Kit
- (3) DNA Evidence Collection Kits
- Master Narcotics Analysis Kit
- Standard Photo Documentation Kit
- Barrier Tape Dispenser
- Barrier Tape 1,000 ft.
- Extension Cord Reel 100 ft.



### MCL100 Series Crime Scene Kits:

- Digital Crime Scene Camera
- MegaMaxx Alternate Light Source
- Master Crime Scene Sketch Kit
- Investigation Mapping Kit
- Evidence Collection Identification Kit
- Evidence Vacuum Sweeper Kit
- Master Expert Latent Print Kit
- Bluemaxx Patrol Kit
- Master Hardcore & Liquid Silicone Casting Kit
- Durocast Impression Compound
- Master Blood Test Kit
- Seminal Fluid Test Kit
- Trace Metal Detection Kit
- (5) Primer Residue Kits
- Cyanowand Cyanoacrylate Fuming Kit
- Master Narcotics Testing Kit
- Number Restoration Kit
- Theft Detection Kit
- (2) Anti-Putrefaction Mask Kits
- Post Mortem Fingerprint Kit
- (3) Crime Scene DNA Kits
- Crime Kit Evidence Identification Kit
- Cyanoacrylate Portable Fuming Cabinet
- (2) DFO Spray
- Hand Held Metal Detector
- Recovery Magnet w/Rope
- Military Folding Shovel
- Barrier Tape
- Tool Box w/Drill & Hand Tools

## Evidence Collection Vehicles

### ECV100

SIRCHIE's ECV100, "No Frills" Evidence Collection Vehicle, has all the equipment necessary to handle the day to day processing of crime and accident scene evidence collection.

#### FEATURES:

- *Lightweight Adjustable Shelving to hold up to 250 pounds.*
- *Report Writing Desk with portable Stool.*
- *Durable, contaminant free, non-porous interior.*



View From Side Door



View From Cab

### MCL100

The MCL100 is the deluxe version of our van based evidence collection vehicles. Featuring built-in cabinetry and rear accessible lighting and generator storage, this unit has been the long standing favorite of crime scene technicians.



Rear Door Cabinet



View From Cab

#### FEATURES/EQUIPMENT:

- *Over twenty-eight (28) crime scene processing kits housed in tailor fit compartments to provide unmatched utilization of space.*
- *On-board refrigerator, sink and flood lights powered by portable generator or dockside power input jack.*
- *Lockable evidence storage cabinets to maintain evidence chain of custody.*
- *Interior work area with lab type finishes to prevent any contamination of evidence during processing.*





# Evidence Collection Vehicles

# Specialized Police Vehicles

## SPAR500

Our Low Profile Walk-In Evidence Collection Vehicle provides the handling characteristics of a standard van with the benefits of stand-up headroom from the cab to the rear doors. Equipped with heavy duty molded storage shelves, a full complement of evidence collection field kits, and non-porous laminate finish evidence processing work tops, the SPAR500 combines handling and maneuverability with function and convenience.



Single Rear Wheel Model



View From Rear Doors



Passenger side from Rear Doors

### FEATURES/EQUIPMENT:

- Scene and emergency lighting package.
- Exterior accessible portable generator compartment (generator not included).
- Heavy duty rubber flooring in processing area.
- Two (2) adjustable height work stools.
- Auxiliary battery and 1000 watt Inverter System
- Fully automatic battery charging system.

## SPAR900

Our intermediate size Evidence Collection Vehicle provides the features of our larger platforms on a shorter wheelbase, lower profile unit. Maintaining the maneuverability of a 138" wheel base unit, this dual rear wheel model has the added convenience of exterior access storage compartments and a higher 11,500 lb. GVWR rating for more payload capacity.



Dual Rear Wheel Model

### FEATURES/EQUIPMENT:

- Four (4) locking evidence storage cabinets.
- Compartmentalized and labeled forensic kit storage.
- Ample interior lighting.
- Auxiliary battery and 1000 watt inverter power system.
- Optional 5000 watt generator available.



### THE SPAR500 & SPAR900 INCLUDE THE FOLLOWING FORENSIC KITS:

- Professional Sketch Kit
- Rechargeable Evidence Vacuum
- Hand Held Metal Detector
- Recovery Magnet & 100 ft. Rope
- Anti-Putrefaction Mask Kit
- MegaMaxx Alternate Light System
- Theft Detection Kit
- Latent Print Kit
- Evidence Packaging Kit
- (5) Primer Residue Collection Kits
- Cyanowand Cyanoacrylate Fuming Kit
- Master Shake-N-Cast Impression
- TexturLift™ Mikrosil Casting Kit
- Master Blood Test Kit
- Seminal Fluid Test Kit
- (3) DNA Evidence Collection Kits
- Master Narcotics Analysis Kit
- Standard Photo Documentation Kit
- Barrier Tape Dispenser
- Barrier Tape 1,000 ft.
- Extension Cord Reel 100 ft.



Driver side from Rear Doors



Passenger side from Rear Doors

## Specialized Police Vehicles

### MCL SERIES CRIME SCENE KITS:

- Digital Crime Scene Camera
- MegaMaxx Alternate Light Source
- Master Crime Scene Sketch Kit
- Investigation Mapping Kit
- Evidence Collection Identification Kit
- Evidence Vacuum Sweeper Kit
- Master Expert Latent Print Kit
- Bluemaxx Patrol Kit
- Master Hardcore & Liquid Silicone Casting Kit
- Durocast Impression Compound
- Master Blood Test Kit
- Seminal Fluid Test Kit
- Trace Metal Detection Kit
- (5) Primer Residue Kits
- Cyanowand Cyanoacrylate Fuming Kit
- Master Narcotics Testing Kit
- Number Restoration Kit
- Theft Detection Kit
- (2) Anti-Putrefaction Mask Kits
- Post Mortem Fingerprint Kit
- (3) Crime Scene DNA Kits
- Krime Kit Evidence Identification Kit
- Cyanoacrylate Portable Fuming Cabinet
- (2) DFO Spray
- Hand Held Metal Detector
- Recovery Magnet w/Rope
- Military Folding Shovel
- Barrier Tape
- Tool Box w/Drill & Hand Tools



Forensic Equipment Storage

## Evidence Collection Vehicles

### MCL900 SERIES

The MCL900 Series of Evidence Collection Vehicles are custom constructed, heavy duty walk-in units outfitted with an extensive array of equipment and field kits that ensure their effectiveness at lengthy investigations and major crime scenes. These spacious but easy to maneuver units are available in 12ft (MCL900/12), 14ft (MCL900/14) and 16ft (MCL900/16) models.



MCL900/16 shown with optional Observation Roof Deck, Telescoping Floodlights, Awning and Exterior Storage Boxes.



Driver Side from Cab



View From Rear Doors



Report Writing Desk

### MCL550/18F

The MCL550/18F Heavy Duty Evidence Collection Vehicle utilizes a Ford Truck (Cab/Chassis) to provide a spacious 18' long work area with high payload capacity. Available in both gas and diesel models and optional Ford factory four (4) wheel drive, these units are ideal for larger county or state applications where mileage and terrain may be an issue.

#### FEATURES/EQUIPMENT:

- *Compartmentalized storage of forensic kits maximizes all available space.*
- *Labeled compartments and kits maintain orderly storage even when there are multiple end users.*
- *Aluminum cabinetry is lightweight and does not compromise space like wooden cabinetry with wood thickness.*
- *All compartments lined with removable corrugated rubber mating for shock absorption and to maintain the cleanliness of the storage areas.*





# Evidence Collection/Mobile Command Vehicles

## CCL900/16

The CCL900/16 Combination Crime Scene and Command Vehicle provides all of the same features as our 900 series evidence collection vehicles and have the added ability to be utilized for communications and command.



### FEATURES/EQUIPMENT:

- Heavy Duty Commercial Cutaway Chassis with 14,500 lbs. minimum GVWR rating.
- Direct walk-thru access from cab to lab area.
- Over cab attic available for added storage of video & computer equipment or other specialty applications.
- Onboard 12V DC/120V AC Refrigerator.
- Compartmentalized Forensic Kit Storage.
- Uniquely keyed Evidence Storage Lockers.
- Rear command area with (2) radio positions.
- Removable conference table.
- Bench seating with storage.
- Available with roof mounted video system.

## CCL550/18F

The CCL550/18F Combination Crime Scene and Command Vehicle is a multipurpose unit that can be configured to meet the bulk of any agency's in-field requirements for either crime scene processing or long term command and communications applications. The heavy duty Ford Chassis, as described above, can accommodate extensive exterior lighting, telescopic masts with long range video systems, satellite TV dishes, VSAT satellite communication systems, and more. Contact our design staff to develop a floorplan for your department's application.



View From Cab



Phone: +1.609.654.0777 Fax: +1.609.654.7869

# Specialized Police Vehicles



View From Rear Doors



### CCL SERIES CRIME SCENE KITS:

- Digital Crime Scene Camera
- MegaMaxx Alternate Light Source
- Master Crime Scene Sketch Kit
- Investigation Mapping Kit
- Evidence Collection Identification Kit
- Evidence Vacuum Sweeper Kit
- Master Expert Latent Print Kit
- Bluemaxx Patrol Kit
- Master Hardcore & Liquid Silicone Casting Kit
- Durocast Impression Compound Kit
- Master Blood Test Kit
- Seminal Fluid Test Kit
- Trace Metal Detection Kit
- (5) Primer Residue Kits
- Cyanowand Cyanoacrylate Fuming Kit
- Master Narcotics Testing Kit
- Number Restoration Kit
- Theft Detection Kit
- (2) Anti-Putrefaction Mask Kits
- Post Mortem Fingerprint Kit
- (3) Crime Scene DNA Kits
- Krime Kit Evidence Identification Kit
- Cyanoacrylate Portable Fuming Cabinet
- (2) DFO Spray
- Hand Held Metal Detector
- Recovery Magnet w/Rope
- Military Folding Shovel
- Barrier Tape
- Tool Box w/Drill & Hand Tools

## Specialized Police Vehicles

### FEATURES/EQUIPMENT:

- Available with rear and side door access.
- Over cab attic available for added storage, video & computer equipment or other specialty applications.
- Accommodations of department supplied radios and interoperability systems.
- Land line phone accommodations and optional cellular systems available.



### FEATURES/EQUIPMENT:

- Conference area with fabric finished bench seating and removable conference table.
- Three (3) Radio Operator positions in communications section.
- Onboard galley with clean-up sink and refrigerator.
- Dry erase marker boards.



## Mobile Command

### MCV9000/17

The MCV9000/17 Commercial Cutaway based command vehicle is a custom constructed, heavy duty walk-in unit outfitted with an extensive array of equipment to ensure its effectiveness at lengthy critical incidents or public functions. The 17' long work area can be custom configured to individual department requirements. These high profile vehicles are designed to provide 24/7 results in the most challenging conditions.



Galley Area



Radio Operator's Area

### MCV550/18F

The MCV550/18F Cab/Chassis based command vehicle features an 18' long work area and a higher capacity 19,500 lb. gross weight rating to carry a full complement of equipment and personnel. Available in both gas and diesel models and with optional Ford factory four wheel drive, this model can take the command team to a critical incident in rough terrain or inclement weather. Once on scene, the command team can operate in a climate controlled, well lit, and comfortable work environment.



Shown with Optional Slide-out Room



Exterior Lights extended



Operations Deck



Equipment Rack



# Mobile Command and Cyber Crimes

## Specialized Police Vehicles

### MCV9000/FL

The MCV9000/FL Freightliner series of commercial vehicles provides the space and payload capacity to house a full communications center. These vehicles can be equipped with auxiliary lighting, satellite communications, telescoping video cameras, broadcast TV dish antennas, and other equipment so they can respond to the most complex incident scenes. Remote and extended operations can be handled easily and in comfort as these mobile offices provide all the required resources.



View towards Cab

**CUSTOM FLOOR  
PLANS  
AVAILABLE**

### FEATURES/EQUIPMENT:

- High capacity generators 10kw - 20kw.
- Both CDL and Non-CDL models available.
- Communication suite tailored to each individual dept.
- Complete climate control via roof mounted air conditioner and choice of electric, propane, or diesel fueled heaters
- Heavy duty construction for years of reliable service.



Alternate Conference Area Layout

### CCV500/SPAR (Computer Crimes Investigation)

The CCV500/SPAR SPARTAN is a commercial cutaway based Cyber/Computer Crimes Investigation Vehicle. The fully climate controlled interior with regulated 120V AC power provides the essentials for working with electronic and computer equipment. Our technical staff can install department supplied equipment or we can source and supply specified equipment to provide a complete turn-key package.

### AVAILABLE OPTIONS

- Cellular Phone/Call-log Data Retrieved
- Hard Drive Duplicating
- Perimeter Camera System for Monitoring of Vehicle surroundings



View from cab facing rearward.  
Photo may include optional items.



Photo may include optional items.

### STANDARD FEATURES

- Ford E350 Commercial Van Chassis
- Two Operator Work Stations
- Stand-up Head Room in Cab & Rear
- Standard EIA 19"W rack cabinet, 24"D
- Pure Sine Wave Inverter w/ Heavy Duty Auxiliary Battery System
- Generator for Climate Control Power
- Roof Mounted Air Conditioner
- Electric Heater w/ Thermostatic Control
- Auxiliary Rear (Engine Driven) Heater/Air Conditioner
- Ample Interior Lighting
- Office Style/Roll Around Task Chairs
- Comfortable Work Space w/ Ample Storage



## FEATURES:

- *Maximum Utilization of Interior Space: Walls and ceiling contour to van interior providing more space, unlike slide-in box units.*
- *Unmatched Durability: The fiberglass interior flexes and does not dent like metal fabricated units.*
- *Thermally Stable: Fiberglass does not retain heat and/or cold to the same extremes as metal.*
- *Unparalleled Officer Safety: Fully sealed interior prevents transfer of airborne pathogens to cab area. Inner security doors control prisoner unloading.*



## FEATURES:

- *Low profile 94" overall exterior height.*
- *Ideal for sally port entrance gates.*
- *Lockable exterior storage for prisoner property bags.*
- *Narrow body design for unparalleled maneuverability.*
- *Isolated rear climate control prevents transfer of airborne pathogens to the driving compartment.*
- *Lockable inner security doors control prisoner flow.*
- *Fold down rear step to accommodate prisoners with leg shackles.*

## PTV100/S

SIRCHIE®'s innovative line of all unitized fiberglass prisoner transport vehicles was introduced in 1979. To date, the unique design of the molded fiberglass interior continues to provide features and benefits not found in any other prisoner transport system. The PTV100/S features a sealed interior that can be flushed/cleaned with a standard garden hose for ease of maintenance.



Optional maximum security cell for special needs prisoners.



Single Inner Security Door Standard, shown with Optional Dual Doors

## PTV900LP

Increased seating capacity in a low profile, high payload Prisoner Transport Vehicle designed for the tight quarters of many jail and court facilities. With over 5,000 lbs. of payload capacity and 28' of bench seating, the model PTV900LP can haul in excess of 15 prisoners without concerns of being overweight. Featuring SIRCHIE's all unitized fiberglass interior, these units are unmatched for durability, ease of maintenance, and officer safety.



Low clearance for sally ports and underground parking.





# Alcohol Enforcement (DUI)

## Specialized Police Vehicles

### DUI100M

Effective as both a deterrent and an enforcement tool, the model DUI100M Alcohol Awareness and Enforcement Vehicle can be used as a patrol vehicle to reinforce a "Drink Responsibly" policy. Vehicle design also allows the unit to be utilized as a mobile arrest / processing unit.



Breath Alcohol Testing Area



Holding Cell

### BAT9000/17

Built on the Ford E-450 chassis and featuring a 17-foot body, the BAT9000/17 Breath Alcohol Testing Vehicle is specifically designed as a holding, interviewing/monitoring, and breath testing platform for field applications. Separate interview and breath testing areas are climate controlled and equipped with a video monitoring and recording system.



### OPTIONAL FEATURES INCLUDE:

- Video monitoring and recording system for testing area and holding cell
- Exterior video monitoring system
- Manual or power awning
- Exterior storage compartments

### FEATURES:

- Durable and easy to maintain testing area with 120V AC and 12V DC power for breath alcohol test equipment, laptops, etc...
- All unitized fiberglass holding cell with inner door provides maximum security, an easy to clean interior, and safe environment (no sharp edges) for detainees.



### FEATURES INCLUDE:

- 14,500lb GVWR Ford E-450 Chassis
- 17ft Aluminum body with steel reinforcement structure
- Rear observation system
- Scene and emergency lighting
- Separate interview and breath alcohol testing areas
- Holding cell with secure interior and exterior access
- 7,000 watt commercial generator
- 13,500 BTU roof air conditioner
- Dual power refrigerator
- Forced air heat



## INTERIOR FEATURES:

- Durable diamond plate finish bench seat with storage below.
- Heavy duty, no slip, industrial rubberized flooring.
- Tactical red / white lighting.
- Dark tint windows with removable black out pads.
- Available auxiliary rear heat / air conditioning.
- Available perimeter camera system with bulkhead mounted monitor.



## FEATURES:

- Aerodynamic design and narrow body for increased maneuverability.
- Exterior access storage for tactical gear.
- Heavy duty suspension and payload.
- Tactical red / white lighting.
- Rubberized no-slip flooring.
- 63" rear door clearance for rapid officer deployment.
- Climate controlled interior for maximum officer comfort during tactical briefing and transportation.
- Adequate secured seating for tactical team.
- Convenient storage beneath bench seating.

## SOV350

The SOV350 is a Four Wheel Drive, high risk warrant, narcotics raid or jump vehicle. The 1 ton chassis provides the payload needed to carry a tactical team as well as their heavy duty gear.



Raid/Jump Truck

## EXTERIOR FEATURES:

- Heavy duty removable step.
- Class IV trailer hitch.
- Discreet emergency lighting, grille and marker lamps.
- Heavy duty running boards.
- Roof mounted stainless steel hand rails.
- Custom front bumper with winch.



Rear Door View

## SOV900/U

The SOV900/U, has a spacious and comfortable interior for the transportation of the tactical squad. Bench seats double as storage compartments that are accessible via removable seat tops. Exiting is made easy via the rear mounted heavy duty step bumper.



Rear Doors



View From Vehicle Cab



### SWAT550/18F

Sirchie's SWAT550/18F provides a 19,500 GVWR chassis capacity to carry the team to the incident scene with the necessary gear to complete their mission. The ample 18ft body is outfitted with comfortable seating for team members plus locker type storage for individual members. Standard Tufloc® high security weapons racks are included to secure up to 16 long weapons.



### SWAT9000/FL

The SWAT9000/FL is a high visibility Freightliner forward control model available to house and transport SWAT / Incident Response Teams. Interior weapon and tactical gear storage as well as team seating are custom designed around personnel and equipment. Available in floor plans ranging from 16' - 24' + working area. These units can also be equipped as secondary command posts.



View From Vehicle Cab



View From Rear Doors

Phone: +1.609.654.0777 Fax: +1.609.654.7869

### FEATURES:

- XLT F550 Ford Cab Package
- 13,500 BTU Roof Mounted Air Conditioner
- 5,500 Watt Generator
- Locking Ammo Storage Cabinet

### AVAILABLE FEATURES:

- Diesel engine packages
- Generator upgrades up to 12Kw
- Department matched lighting and graphics
- Custom weapons storage applications



### FEATURES:

- Bright office type fluorescent lighting as well as tactical red / white lighting.
- Individual team member lockers for personnel gear and storage.
- General turn-out gear lockers for storage of bunkers and shields.
- Dry erase marker message and map boards.
- Heavy duty, industrial, rubberized, no-slip flooring.
- Durable FRP panel walls and ceiling.
- Operations desk with office chair.
- Weapons specific gun racks.
- Overhead cabinets for storage of smaller items such as flex cuffs.
- Climate controlled interior with roof mount air conditioning and baseboard electric heat.
- Additional bulk storage under bench seats.
- On-board generator fueled directly from vehicle fuel tank.

## Specialized Police Vehicles

### FEATURES:

- Heavy duty steel frame cabinets to support the weight of bomb suits and bomb blankets.
- Electric air circulation system for bomb suit locker to keep suits dry.
- Heavy duty aluminum ramps for bomb robot loading and unloading stored in wall mount brackets at desk location.
- Dockside / shore power input and on-board industrial generator for 120V AC vehicle power.
- Office type 120V AC twin tube fluorescent lights provide bright, even lighting.
- Roof mounted 13,500 BTU (minimum) air conditioning.
- 1,500 watt 120V AC electric space heater
- Portable 500 watt halogen floodlights with extension cords for scene lighting.



### FEATURES:

- XLT F450 Ford cab package
- Standard front and rear emergency lighting
- Side mount scene lighting
- Spacious, well lit, 16ft work area
- 13,500 BTU roof mounted air conditioner
- 1,500 Watt heater
- 5,500 Watt generator with integrated brake controller
- Plywood lined, exterior "day-box"

## Bomb Response

SIRCHIE® manufactures a full line of Bomb Response Vehicles designed to house and transport the specialty equipment required to respond to a suspect explosive devices scene including bomb suits, disrupters, x-ray machines, bomb robots, etc.

### BRV9000 SERIES

SIRCHIE's BRV9000 series Bomb Response Vehicles are supplied on commercial cutaway chassis with direct walk-thru access from the cab into the work area. The 14,500lb GVWR units are available in both 14' (BRV9000/14) and 16' (BRV9000/16) long operations areas that provide a functional storage and workspace to facilitate the bomb response team at a critical incident.



Rear Door View



### AVAILABLE FEATURES:

- Robot operations desk with cable access door and adjustable height office chair
- Wall mounted storage cabinets
- Heavy duty plastic laminate work tops
- Available manual / power awnings
- Available exterior storage compartments
- Available vehicle mounted 500 watt telescopic floodlights

### BRV9000/16HD

Sirchie's BRV9000/16HD Bomb Response Vehicle shares the same features and technical aspects as the BRV9000. Equipped with a heavy duty F450 Truck Chassis this unit carries a higher 16,500lb GVWR to handle larger equipment loads and/or containment trailers. The taller frame rails also provide additional underbody storage and day-box area.

### AVAILABLE FEATURES:

- Diesel engine packages
- Generator upgrades up to 12Kw
- Department matched lighting and graphics
- Bomb robot ramp or hydraulic lift
- Containment trailer hitch





# Bomb Response & Underwater Rescue

## Specialized Police Vehicles

### BRV550 SERIES

SIRCHIE's BRV550 series bomb response vehicles are supplied on heavy duty truck chassis with higher gross vehicle weight and combined gross vehicle weight (vehicle and trailer) ratings. Available in both gas and diesel engine models and with Ford factory four wheel drive, these units are ideal for departments with larger (heavier) bomb robots and/or who want to utilize the vehicle in conjunction with a bomb containment trailer.



#### AVAILABLE FEATURES:

- Available in 16' (BRV550/16F) and 18' (BRV550/18F) long work area models
- Over cab storage areas • Front bumper mounted winch • Electric hydraulic lift gates
- Mast mounted video systems • Alternate floor plans to incorporate command/communications operations



### UWR550/18F

The UWR550/18F Underwater Rescue Vehicle was specifically designed for the unique demands & applications of dive teams.



#### AVAILABLE OPTIONS:

*Dry Storage/ Radio / Reporting Area - Instant Command & Communications Capable • Four Wheel Drive • Bumper Mount Recovery Winch • Roof Mount Light Tower • Hydraulic Stabilization • Power or Manual Awning • Exterior Shower*



Exterior Lights extended



Ventilated Wet Suit Storage Locker



"V" Sloped Floor with Drains

#### FEATURES:

- Heavy duty steel frame cabinets to support the weight of bomb suits and bomb blankets.
- Electric air circulation system for bomb suite locker to keep suits dry.
- Heavy duty aluminum ramps for bomb robot loading and unloading stored in wall mount brackets at desk location.
- Dockside / shore power input and on-board industrial generator for 120V AC vehicle power.
- Office type 120V AC twin tube fluorescent lights provide bright, even lighting.
- Roof mounted 13,500 BTU (minimum) air conditioning.
- 1,500 watt 120V AC electric space heater.
- Portable 500 watt halogen floodlights with extension cords for scene lighting.

#### FEATURES:

- Safe, sturdy upright SCUBA tank storage.
- Corrosion resistant, welded aluminum cabinetry.
- "Through Cabinet" power ventilation.
- Locker style wet suit storage.
- Air conditioned and heated changing area.
- Onboard generator & fluorescent lighting.
- Exterior scene lighting.
- "V" sloped non-slip flooring with center drains.

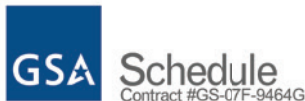


Cab to Rear Doors

## Specialized Police Vehicles

### FEATURES:

- E450 Ford 14,500 GVWR Chassis
- Direct walk-thru access from cab to lab area
- Laboratory style interior
- Lockable evidence storage
- Large work areas
- Report writing desk
- Wash-up sink with 12 gallon water supply
- 5,500 Watt generator
- Emergency and scene lighting



### FEATURES/EQUIPMENT:

- Three position operations desk for intelligence officer, coach and negotiator.
- Dry erase message boards accessible to all three (3) positions.
- Insulated and sound deadened walls.
- Front and rear bulkheads to control entry into negotiation area.
- Internal and external phone jacks for communication.
- On-board generator.
- Full climate controlled interior.
- Removable black-out pad on side entry door window.
- Rear galley area standard, secondary operations area optional at rear of vehicle.

## Arson Investigation & Hostage Negotiation

### AIU900 SERIES

Sirchie's AIU900 Arson Investigation Vehicle is specifically outfitted for the unique needs of an arson investigator. Solid and liquid sampling kits, sealable metal evidence containers, sifting screens and both heavy duty and smaller detail tools are provided with well organized, compartmentalized storage space.



16ft body (AIU900/16) Pictured

### AVAILABLE FEATURES:

- 12ft (AIU900/12), 14ft (AIU900/14), and 16ft (AIU900/16) lab areas
- Department matched lighting and graphics • Roof Deck and Ladder package • High powered scene light packages

### HN9000

The HN9000 Hostage Negotiation Vehicle is a mobile office designed for the stressful task of hostage negotiations. Fully familiar with all forms of communication and audio recording equipment, SIRCHIE's Technicians custom integrate police radios, cellular phones, etc. to produce custom tailored negotiation vehicles. Accommodations of department supplied equipment (throw phones, recorders, etc.), climate controlled interiors, and basic amenities (microwave, refrigerator, etc.) are standard and provide the function and comfort needed during extended operations.



Lockable side door for easy two step entry.





# Surveillance Vehicles

## Specialized Police Vehicles

### MSV500D

The MSV500D Trade Van Platform Series remains the most popular disguise for surveillance applications nationwide. Their unassuming and common appearance does not draw attention, thus making them effective from the inner city to rural towns.



Now available  
with IP NetScope™  
option



Common trades van look



Optional Extended Length Van with Dual (2) Operator Positions and Retractable Periscope



MSV500D Interior Layout with Optional Compressor A/C

### MSV500D/RV

The MSV500D/RV is the ideal disguise for resort and vacation areas. The RV style surveillance van has all the same capabilities of a standard van in a vehicle with increased headroom for added comfort. The vehicle also features full 360-degree window observation due to installation of bay windows.

Now available  
with IP NetScope™  
option



### FEATURES:

- Insulated walls sprayed in foam, contour formed to vehicle to provide the most complete insulation and usable interior space.
- Recessed mounting (below floor) of primary battery system to preserve interior van space for equipment and storage.
- Controls and equipment ergonomically arranged for easy operation.
- Added head space and higher periscope observation views.
- Spacious work counter.
- Interior configurations can be custom tailored to individual requirements.
- Accommodation of department supplied radios, MDTs, computers, etc...
- Full 360 degree viewing capability via window and bulkhead camera ports.

### FEATURES:

- Single operator (standard) and dual operator models available.
- Ergonomic equipment mounting and control layouts.
- Standard multiplexed DVR recording system capable of recording multiple, simultaneous video streams.
- Optional hybrid systems and NVR's (network video recorders).
- Low profile periscope with handheld, graduated speed, joystick controller.
- Optional fixed IP & PTZ IP cameras.
- Optional cellular modem with video encoder and free DDNS service.
- Contoured wall panels to provide maximum interior space.
- Optional retractable periscope and compressor driven air conditioner.



Operator Seating Positioned For Easy Access To All Equipment



View From Rear



## Specialized Police Vehicles

## Surveillance Vehicles

### FEATURES:

- Standard multiplexed DVR recording system capable of recording multiple, simultaneous video streams.
- Optional hybrid systems and NVR's (network video recorders).
- Camera ports in bulkhead, left and right windows, and rear hatch can provide full 360 degree observation and recording capabilities.
- Standard 19" EIA rack mounting of equipment for easy service or upgrading of equipment as technology changes.
- Dedicated and separate battery banks for surveillance electronics and climate control systems.
- Standard compressor driven air conditioner and electric heater to maintain a comfortable interior.



### FEATURES:

- Provided standard with a blackout curtain and optionally available with a security bulkhead.
- Video input and power panels located conveniently at all camera port locations.
- Factory seating provides ample head and legroom.
- Spacious work counter with all controls in easy reach of operator.
- Available with motorized periscope or window mounted camera systems.



### SUV5000

A suitable disguise for virtually any environment, SIRCHIE®'s SUV5000 incorporates one of today's most popular SUVs with the latest in digital video technology. Proven effective in the field, the SUV5000 provides a safe and easy to use climate controlled platform that does not compromise the comfort and safety of the operating officer. The SUV5000 is also capable of operating as an un-Manned "drop vehicle" through the use of optional PTZ IP cameras and Cellular Video Gateway.

Now available  
with IP NetScope™  
option



Easy to Access Operators Console



Forward View from 3rd Row Operators Seat

### MSV200MINI

The MSV200 Mini Van Series once again provides a suitable host for a surveillance conversion. Ideal for use in suburban areas where a work truck disguise may draw attention, these units can house a complete complement of surveillance equipment and provide full size van results.

Now available  
with IP NetScope™  
option



View from Operator Seating



View from Side Door



# Surveillance Vehicles and Upgrade & Refurbishing

## Specialized Police Vehicles

### MSV500U

The MSV500U is a larger vehicle ideal for multiple operators and other applications such as covert command or hostage negotiations. These higher profile vehicles are equipped with upper panel windows to accommodate fixed camera mounts or optional PTZ IP Cameras. Optional cellular video gateway allows operations to be monitored by the command staff and tactical team members using internet connected laptops and smart phones.



Rack Mount Equipment Suite



Open counter top design allows space for equipment such as a briefcase-style body wire gear, microwave video receivers, and telemetry control equipment.



### UPGRADES & REFURBISHING PACKAGES

Surveillance vehicles are normally high use but low mileage units. Most 5-10 year old vehicles have been driven less than 20,000 miles and have paid for themselves many times over due to asset forfeiture laws. Retrofitting a still road-worthy, older vehicle with new digital video and audio equipment can produce a more functional surveillance platform than when the unit was first manufactured. And it's older exterior appearance does not attract attention in the troubled areas where it is used. **Several GSA Bundled packages are available—call for details.**

- Replace cluttered counter tops and bulky equipment with spacious work tops and rack or wall mounted equipment which includes LCD flat screen monitors, hard disc recorders, and computer/IP systems.
- Multiplexed digital video recorders capable of recording multiple simultaneous video streams, replace VCRs, confusing switcher systems and outdated patch panels.
- Older manual or motorized periscopes are replaced with graduated speed, low profile remote control units with precision ground optical quality observation mirrors.
- Inverter and battery charging system upgrades provide cleaner 120V AC power and longer run times.
- New compressor driven air conditioners replace old wet ice units.
- Custom made blackout pads, camera socks and new privacy tint panels replace warped and scratched Plexiglass.



### FEATURES:

- Lockable exterior cabinets allow easy access for battery and equipment maintenance.
- Welded tubular steel frame construction of consoles, bench seat and cabinets for strength and durability.
- Office style interior with ample work space and storage cabinetry.
- Controls and equipment ergonomically arranged for easy operation.
- Added head space and higher periscope observation views.
- Interior configurations can be custom tailored to individual requirements.
- Accommodation of department supplied radios, MDTs, computers, etc...
- Full 360 degree viewing capability via window and bulkhead camera ports.
- Unsurpassed factory technical support from the longest active manufacturer of law enforcement surveillance vehicles.



## PSS550D FEATURES:

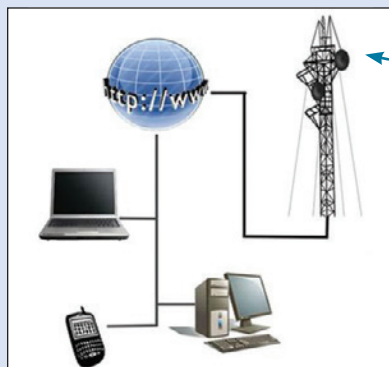
- Twin (2) LCD flat screen monitors
- 16 ch, 1.0TB HDD DVR w/DVD drive, USB & 10/100 connectivity
- Wide band programmable receiver for body wire reception
- Shock mount rack case with front and rear covers
- Requires 110VAC power (see Power Seat Package below)

## PWR100 & 200 FEATURES:

- Battery isolator.
- AC & DC power outlets.
- Shore power inlet connector & weather proof NEMA enclosure.
- AC distribution connection point.
- DC distribution leads with buss bars.
- Welded aluminum frame
- Safe reliable 8G8D gel cell batteries. (no harmful fumes)
- Automatic battery charger
- 1000 watt pure sine wave power inverter.

## AC43W FEATURES:

- 16 gauge welded stainless steel ice chamber.
- 200 lbs. solid ice capacity.
- Powerful swirl cage blower.
- Automotive upholstery finish.
- Formica finished top.
- 12V DC operation.



## PSS350D & PSS550D PORTABLE SURVEILLANCE SYSTEMS

SIRCHIE®'s PSS350D & PSS550D Portable Surveillance Systems can transform any van, SUV, mini van, hotel room or office into an instant surveillance site. Seized or rented vehicles allow for different disguises on long term operations.

### PSS350D FEATURES (pictured):

- LCD flat screen monitor
- 4-ch, 500GB HDD DVR w/DVD drive, USB & 10/100 connectivity
- Wide band programmable receiver for body wire reception
- Internal 100ah battery & charging system
- Shock mount rack case with front and rear covers



CAT NO.	DESCRIPTION	PRICE	GSA PRICE
PSS350D	Portable Surveillance System, 4 ch, 1 Monitor		
PSS550D	Portable Surveillance System, 16 ch, 2 Monitors		
PSS550DPERM	Perimeter Camera Kit, option		

## PWR100 & PWR200 POWER BENCH SEAT

Surveillance Van Bench Seat complete with 12V DC / 120V AC power source for use with the rack system shown above or any van application where a reliable, quiet power source is required. Gray automotive fabric finish with cushioned seat pads.



Dimensions 60"L x 16"H x 24"D

CAT NO.	DESCRIPTION	PRICE	GSA PRICE
PWR100	Power Bench Seat (1 battery)		
PWR200	Power Bench Seat (2 batteries)		

## AC43W WET ICE AIR CONDITIONER

AC43W Wet Ice Air Conditioner is still the proven economical means of cooling a surveillance vehicle. Unmatched run time, from minimal five (5) amp draw DC motor, can operate continuously for eight (8) hours.

Made to nest over wheel well



CAT NO.	DESCRIPTION	PRICE	GSA PRICE
AC43W	Wet Ice Air Conditioner		

## IPVIS4000C BRIEFCASE IP VIDEO INTERFACE SYSTEM

With SIRCHIE's IPVIS4000C, any surveillance vehicle or fixed site can benefit from secure, internet based video monitoring. Now all team members from the tech squad, SWAT Team, and supervisory personnel can monitor the video feed in real-time. Consequently, informed decisions can be communicated to make an arrest or extract the undercover operatives. This system puts IP technology into an easy to use, lightweight, and portable package. Unit will ship ready to operate. Free DDNS service available, if required.



CAT NO.	DESCRIPTION	PRICE	GSA PRICE
IPVIS4000C	Briefcase IP Video Interface System		



### RCSS4000 REMOTE CONTROL PERISCOPE

- Disguised as a low profile static vent, the stationary exterior vent eliminates the risk of detection and freeze-ups.
- Precision ground optical quality mirrors for distortion free images w/telephoto lenses.
- Dual axis joystick controller for pan/tilt.
- Momentary switches for zoom and focus.
- Variable speed control of pan/tilt, zoom and focus.
- Convenient iris control for brightness.
- Rapid camera change over takes 30 seconds.



CAT NO.	DESCRIPTION	PRICE	GSA PRICE
RCSS4000*	Remote Control Periscope		

\* Camera not included, see our selection of surveillance video cameras on Page 431

### CMP1000 MANUAL PERISCOPE

Manual Periscope with same construction and precision ground optical quality mirrors as remote control periscope. Unit provided with heavy duty and removable, universal camera mount.

CAT NO.	DESCRIPTION	PRICE	GSA PRICE
CMP1000*	Manual Periscope		

\* Camera not included, see our selection of surveillance video cameras on Page 431



### WDV5000 WET VAC IP CAMERA SYSTEM

Disguised as a common wet/ dry vacuum, this undercover remote control camera system looks right at home in pick-up trucks, vans and SUV's.



CAT NO.	DESCRIPTION	PRICE	GSA PRICE
WDV5000	Wet Vac RF System		

#### WDV5000 FEATURES:

- 18x optical zoom day/night camera
- 720p HD images @ 30fps
- Internal cellular router works with most 3G & 4G aircards
- Controllable from any internet enabled PC, tablet or smart phone
- Supplied battery system with charger

### TB1000IP TISSUE BOX COVERT CAMERA

This disguised camera system can be placed on the rear window deck of almost any car without arousing suspicion. Using high definition IP Block Cameras and ruggedized PTZ mechanisms it can peer out from video transparent viewing bands to capture evidential recordings. Available with 3G/4G capable Cradle Point Routers using customer supplied air card cellular modems or optionally available Seirra Wireless modems such as the Helix RT (3G) or GX440 (4G). Control and monitoring by multiple users can be accomplished anywhere that internet connectivity is available.



CAT NO.	DESCRIPTION	PRICE	GSA PRICE
TB1000IP	Tissue Box Covert Camera		

#### TB10000IP FEATURES:

- 35X optical zoom camera, higher optical zoom than most commercially available IP PTZ Camera
- Continuous 360° pan, virtual front tilt, reducing the required height of the viewing window area.
- Operating temperature from 32°-140° F.

## IP NETSCOPE COMPONENTS:

- 1- Periscope Assembly
- 1- Roof Mounting Plate
- 2- Ceiling Trim Panels
- 1- Packet mechanical mounting hardware
- 1- 19" EIA 2U (2 Space) Rack Shelf
- 1- NetScope Controller / Video Server (Mounted to Rack Shelf)
- 1- Controller Relay Board (Mounted to Rack Shelf)
- 1- 3G/4G Cellular Router
- 1- Graduated Speed Joystick Controller
- 1- Joystick Control Cable
- 1- Periscope Control Cable
- 1- Power Cable
- 1- Network Cable
- 1- Video Cable
- 1- Instructions
- **RCSS5000IP: Full listing is for the Complete IP Netscope System**
- **NS5000IP: Components in red constitute conversion kit**



IP NetScope Feed Can Be Viewed or Controlled from Anywhere via Internet Enabled Device with an Internet Connection



View or Control the Feed on Any Internet Enabled Device



## IP NETSCOPE™ INTERNET PROTOCOL VEHICLE PERISCOPE SYSTEM

The Sirchie Vehicle Division continues to deliver the latest advances in technology for surveillance vehicles. The IP NetScope™ is a solution that gives your team the flexibility and convenience of delivering a secure video feed that can be controlled remotely via any internet enabled device.

### Help Keep Your Team Safe, Informed, and Prepared for Action

This technology gives you the option of running a surveillance operation with an unmanned vehicle with the same control as having a manned operation. Using wireless internet technology and the included software, IP NetScope™ allows you to control the camera from any Internet enabled device including PC, laptop, tablet, or smartphone. You can control the pan, tilt, zoom, focus, and iris adjustment of your camera remotely from your device or with manual override in your vehicle.



Camera not Included

### Observe, Monitor, or Lead Your Operation from Any Location with Internet Access

Having the live video feed available via a secure internet connection allows all members of your team to view the feed in real time and be prepared for any necessary response and action. Whether you are in a command center; at the office; in the field; or remotely located anywhere in the world with internet access, you can monitor your operations. The IP NetScope™ supports multiple users allowing command staff, patrol, tech, and tactical teams to monitor the live stream in real time.

### Run Your Operation Around the Clock with the Right Optional Camera

Sirchie's IP NetScope™ offers the ability to work with a range of cameras including color, day/night, extreme low light, and night vision cameras to give you the versatility and flexibility you need to run your operation around the clock.

### Choose the Right Option for Your Department Needs

Just imagine the flexibility, control, and increase in safety you can have for your operation by employing the IP NetScope™ system. This exciting technology can be:

- Added on to the periscope in your existing surveillance van (NS5000IP)
- Incorporated into your existing surveillance vehicle with a new periscope (RCSS5000IP)
- Built as an option into a new surveillance vehicle quote from Sirchie.

**Contact us now for more information, quotes, and specifications at [vehicles@sirchie.com](mailto:vehicles@sirchie.com) or 1.800.545.7375**

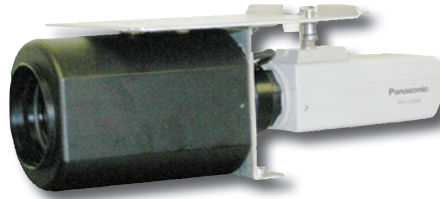
CAT NO.	DESCRIPTION	PRICE	GSA PRICE
NS5000IP*	IP NetScope™ Conversion Kit (Upgrade Existing Periscope)		
RCSS5000IP*	IP NetScope™ Periscope (Complete System)		

\* Camera not included, see our selection of surveillance video cameras on Page 431



### DCX400 DAY CAMERA

This covert video camera is an excellent choice for general day use, and can be used in conjunction with any of our covert video systems.



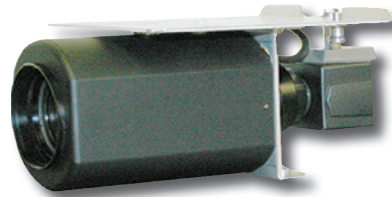
#### FEATURES:

- 540 TVL resolution
- 0.6 Lux color camera
- 32-320mm TV zoom lensing

CAT NO.	DESCRIPTION	PRICE	GSA PRICE
DCX400	Day Camera (Color)		

### DNX500 DAY/NIGHT CAMERA

This dual mode camera system eliminates the need to change cameras after nightfall. It automatically changes from color to black & white in low light situations.



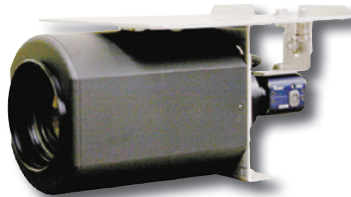
#### FEATURES:

- 480 TVL resolution
- 0.1 lux color camera
- 0.006 lux b&w mode
- 32-320mm TV zoom lensing

CAT NO.	DESCRIPTION	PRICE	GSA PRICE
DNX500	Day/Night Camera (Color/b&w)		

### LLC2000/SUV EXTREME LOW LIGHT

This black and white camera is designed to be used in low light situations and features a lens that can be zoomed from a wide angle of 16mm to a moderate telephoto of 160mm.



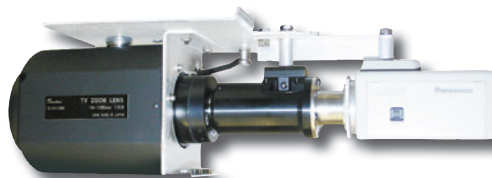
#### FEATURES:

- 570 TVL resolution
- 0.0003 lux b&w camera
- 16-160mm TV zoom lens

CAT NO.	DESCRIPTION	PRICE	GSA PRICE
LLC2000/SUV	Extreme Low Light Camera (Black & White)		

### NCS3300 NIGHT VISION CAMERA

This camera is designed to be used in near complete darkness, features a 3rd generation night vision intensifier tube, and a 16mm-160mm zoom lens.



#### FEATURES:

- 570 TVL resolution
- CCTV camera
- 0.000001 Lux 3rd gen intensifier
- 16-160mm TV zoom lens

CAT NO.	DESCRIPTION	PRICE	GSA PRICE
NCS3300	Night Vision Camera		

## Specialized Police Vehicles

### FEATURES:

- Audio and video recording capabilities of processing area.
- Handcuff bar provided at suspect seat / processing area.
- Stable and filtered power supply for use with test equipment.
- Van model ideal to respond to roadside stops.
- Larger model, BAT900FL can be utilized as a mobile command center.
- Intermediate sized commercial cutaway models available (14' and 16' work areas).

### As a vehicle customer, what sets us apart is that we offer you:

- Custom floor plan designs at no charge so you get the best fit for your department's needs
- In-house custom fabricated cabinetry to meet customer specifications, accommodate department supplied equipment and Sirchie products
- Almost the full line of Sirchie vehicles and equipment on GSA schedule
- Lifetime technical phone support for your team
- Ongoing available upgrades and refurbishing programs to maximize the lifetime of your vehicle
- Grant monitoring and grant writing assistance

## Alcohol Enforcement (DUI)

### BAT9000/FL

The BAT900/FL Freightliner based DUI unit is a high visibility vehicle that is ideal for roadside sobriety checkpoints or at larger public sporting events where a mobile processing / booking vehicle may be required. Each vehicle has a holding cell for detainees as well as a processing area with accommodations for agency supplied breath alcohol test equipment.



Radio Operations Area



Suspect Testing / Processing Station



Full Visibility Holding Cell

### WHY WORK WITH THE SIRCHIE VEHICLE DIVISION?

- The Sirchie Vehicle Division has decades of vehicle manufacturing experience and long-time employees who are experts in their crafts.
- Our team works in a facility that is solely dedicated to the production of special purpose police vehicles and related equipment with a staff that has built 1000s of vehicles for clients around the globe.
- We are a single source provider of products, vehicles, and training who has been in business since 1927.
- A large portion of our customer base consists of repeat customers who have purchased several vehicles. This attests to the quality of our products and the service we provide.

