



Ductless Fume Hoods, Chambers & Drying Cabinets

Ductless fume hoods, work stations, DrySafe™ evidence drying cabinets, and CyanoSafe™ cyanoacrylate fuming chambers are important tools for any lab. As ductless solutions, these items can be placed anywhere in your lab space to give you flexibility in your layout. They are also popular options in our mobile crime lab vehicles.

What are Ductless Evidence Drying Cabinets and Ductless Forensic Workstations?

- Ductless Evidence Drying Cabinets are ventilated, filtered enclosures which safely dry various items of evidence in a contaminant-free environment. This evidence is suspected of containing physiological fluids, such as blood, semen, urine, saliva, and fecal matter.
- Ductless Forensic Workstations are filtered and safe workspace enclosures to process physical evidence using latent print powders, chemical reagents, and vapors.
- Ductless CyanoSafe cyanoacrylate chambers offer larger self-contained space to process evidence using fuming techniques safely and efficiently.

Who needs these Cabinets and Workstations?

Anyone involved with the technical analysis and testing of crime scene evidence.

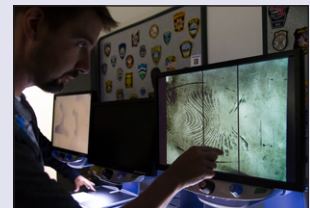
Why are these Cabinets and Workstations important?

They're important for two reasons: evidence integrity and safety. A cabinet will protect the evidence from cross-contamination and the technician from possible airborne pathogen contamination. Workstations are safety devices made to prevent toxic, flammable or noxious materials from entering the work atmosphere.

Evidence Collection Course



Our popular Evidence Collection Accelerated Training Class gives you hands-on experience in limited class sizes covering the scientific methods of collection, identification, evaluation, and preservation of physical evidence. Our students love the teach-do method of instruction and take their knowledge back to the field as lifelong Sirchie graduates.



For more information about this and all other training courses, visit www.sirchie.com or call us at (800) 356-7311.

DrySafe™

DrySafe™ Evidence Drying Cabinet

We designed this cabinet to protect the operator from harmful bacteria, viruses and putrid odors while ensuring the integrity of your evidence by protecting it from cross-contamination. We also offer a decontamination spray to disinfect the cabinet between cases. Filters are included with all DrySafe™ evidence drying cabinets. See below for available sizes. Available in 110V and 220V.



No. ACEVD24A	mini-DrySafe™, 24" x 30" x 23"
No. ACEVD30BT	DrySafe™, 30" x 28" x 48"
No. ACEVD30A	DrySafe™, 30" x 28" x 84"
No. ACEVD36A	DrySafe™, 36" x 28" x 84"
No. ACEVD48A	DrySafe™, 48" x 28" x 48"
No. ACEVD60A	DrySafe™, 60" x 28" x 84"
No. ACEVD72A	DrySafe™, 72" x 28" x 84"
No. ACEVD96A	DrySafe™, 96" x 28" x 84"

visit sirchie.com for full dimensions

DrySafe™ Start-up Kit

We put together this kit so you have everything you need to start using the DrySafe™ evidence drying cabinet.



No. ACEVD34	DrySafe™ Startup Kit
No. ACEVDCLSEP	Clothing Separator, 23" W x 58" L x 1/8" thick

Replacement Filters

Bonded Carbon-Activated Filter

Use this filter to absorb the fumes and odors associated with drying bloody articles.



HEPA Filter (ACFHEPA)

Highly efficient filter for particles, such as toxic powders, asbestos, lead, and fingerprint powders, etc.

Particulate Pre-Filter (ACFPRE)

This filter removes sub-micron particulates to filter out contamination.

No. ACF30018	Bonded Carbon-Activated Filter for mini-DrySafe
No. ACFHEPA18	HEPA Filter for mini-DrySafe
No. ACFPRE18	Main Trace Pre-Filters for mini-DrySafe, 12 ea.
No. ACFPRE15	Door Pre-Filters for mini-DrySafe, 12 ea.
No. ACF300	Bonded Carbon-Activated Filter for DrySafe
No. ACFHEPA	HEPA Filter for DrySafe
No. ACFPRE	Pre-Filters for DrySafe, 12 ea.

Kraft Paper Liners

Federal guidelines recommend that you should place a new paper liner on the cabinet bottom before each use. You should retain this liner for potential trace evidence.



No. ACEVD351	Kraft Paper Liners, 100 ea.
---------------------	------------------------------------

Kraft Evidence Bags and Paper Roll

Available in four sizes; for larger items, use the paper roll.

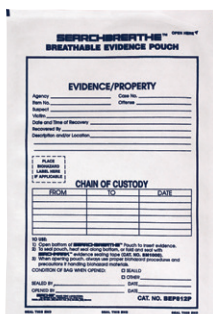


No. EB000P	Kraft Paper Bags, 5" x 9 7/8" x 3 1/8", 100 ea.
No. EB001P	Kraft Paper Bags, 7" x 13 3/4" x 4 1/2", 100 ea.
No. EB002P	Kraft Paper Bags, 8" x 18" x 5", 100 ea.
No. EB003P	Kraft Paper Bags, 12" x 18" x 7", 100 ea.
No. KRP100	Kraft Paper Roll, 36" x 1200'



SearchBreathe Breathable Evidence Bags

This pouch is ideal for evidence items that need breathing capability and visibility. It's ok if the evidence isn't dry when you store it in the pouch.

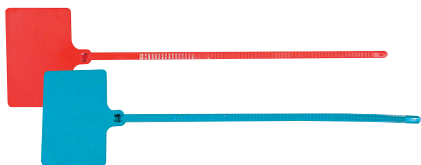


No. BEP812P **Breatheable Evidence Pouch, 8" x 12", 100 ea.**

No. BEP1015P **Breatheable Evidence Pouch, 10" x 15", 100 ea.**

Evidence Tags

Federal guidelines recommend using colored tags to indicate drying cabinet status. Blue represents a clean cabinet and Red represents cabinet in use. Space is provided for writing information. Length is 12"



No. ACEVDRT **Red Evidence Tags, 25 ea.**

No. ACEVDBT **Blue Evidence Tags, 25 ea.**

Sporicidin Disinfectant Solution

It's very important to decontaminate your DrySafe cabinet between cases. Sporcidin offers this high-level of disinfection.



Often Bought with:
(SF0078) Nitrile Gloves



No. ACEVD161 **Sporicidin, 22 oz, 1 ea.**

No. ACEVD16 **Sporicidin, 22 oz, 12 ea.**

CyanoSafe™

CyanoSafe™ Fuming Chambers and Mini-CyanoSafe™

These fuming chambers are designed to safely process items using the cyanoacrylate fuming method. It provides a controlled environment for processing latent fingerprints on nonporous surfaces while eliminating your exposure to hazardous cyanoacrylate fumes. It features AirSafe, an automatic safety controller of the filter conditions. Available in a benchtop or free-standing design, in 110V or 220V.



Filters are included. Replacement filters available. Refer to owner's manual for replacement schedule.



No. CAS24 **mini-CyanoSafe, Benchtop, 24"**

No. ACF10018H **mini-CyanoSafe Hybrid Bonded Carbon Filter, ea.**

No. CAS30 **CyanoSafe, Benchtop, 30"**

No. CAS30T **CyanoSafe, Free-Standing, 30"**

No. CAS48 **CyanoSafe, Benchtop, 48"**

No. CAS48T **CyanoSafe, Free-Standing, 48"**

No. CAS60T **CyanoSafe™, Free-Standing, 60"**

ACF100H **Hybrid Bonded Carbon Filter for CyanoSafe, ea.**

ACFPRE **Pre-Filters for CyanoSafe, 12 ea.**

visit sirchie.com for full dimensions

CyanoSafe Start-Up Kits

The ideal kit to get everything you need to start using your CyanoSafe Fuming Chamber. Available for CyanoSafe and Mini-CyanoSafe.



No. CAS10 **CyanoSafe Start-up Kit**

No. CAS11 **mini-CyanoSafe Start-Up Kit**



Often Bought Together:
Indicates items often
purchased in conjunction with
other items.

Dusting Stations

Down Draft Dusting Station

This station gives you or your team critical protection from potentially harmful powders and particulates associated with latent print processing. The station pulls air away from you in two directions: downward and to the rear of the workstation, keeping print powder particulates away from you. It's also easy to maintain and clean and it's light enough to be moved anywhere (around the lab or to crime scenes).



Filters are included. Replacement filters available. Refer to owner's manual for replacement schedule.



No. DDS24	Down Draft Dusting Station, 24" x 17 1/2" x 24"
No. DDS36	Down Draft Dusting Station, 36" x 17 1/2" x 24"
No. DDS48	Down Draft Dusting Station, 48" x 17 1/2" x 24"
No. ACFHEPA8	24" Replacement HEPA Filter
No. ACFHEPA18	36" Replacement HEPA Filter
No. ACFHEPA22	48" Replacement HEPA Filter

Latent Print Dusting Station

Our stations provide superior protection to you or your team while dusting items with a variety of latent print powders. Streamlined air flow pulls particulates away from your breathing zone into a filtration zone. This air flow works because:

- Print powders have a variety of particle sizes and the only effective way to capture the smallest to the largest particles is by pulling them away from your breathing zone.
- Lighter and smaller particles rise while heavier ones will fall to the base and can be cleaned.
- To provide personal protection to you, our station uses an upward airflow
- Our dusting stations have been independently tested for powder containment.



32" Workstations

No. DS100A	Latent Print Dusting Workstation, 32" x 42" x 24"
No. ACALGFL	Optional External Fluorescent Light Kit*
No. ACA1011	Optional Steel Cart, 34" fixed height
No. ACFHEPA	HEPA filter for DS100A, 1 ea.
No. ACFPRE1	Pre-Filters for DS100A, 1 ea.

* Light kit must be ordered at time of purchase.

48" Workstations

No. DS200A	Latent Print Dusting Workstation*, 48" x 42" x 24"
No. ACA1039	Optional Steel Cart, 34" fixed height
No. ACFHEPA18	HEPA Filter for DS200A, 1 ea. (2 required)
No. ACFPRE4	Pre-Filters for DS200A, 12 ea. (2 required)

* Light kit is included on 48" Workstations.

Forensic Workstations

Basic Forensic Workstations

Ideal for smaller departments and labs to protect your team against the dangerous particulates of dust and fumes from fingerprints powders, cyanoacrylate, iodine, Ninhydrin, and DFO, and drug identification using solvents. Additionally, it can be fitted with a bonded carbon-activated filter for gases or a HEPA filter for particulate containment. Available in 110v or 220V.



32" Workstations

No. AC632C	Carbon Workstation, 32"
No. AC632H	HEPA Workstation, 32"
No. ACALGFL	Optional Fluorescent Light for 32" Workstation*
No. ACA1011	Optional Steel Cart, 34" fixed height
No. ACF100	Bonded Carbon Filter, 1 ea.
No. ACFHEPA	HEPA Filter, 1 ea.
No. ACFPRE	Pre-Filters, 12 ea.

* Light kit must be ordered at time of purchase.

48" Workstations

No. AC648C	Carbon Workstation*, 48"
No. ACA1039	Optional Steel Cart, 34" fixed height
No. ACF10018	Bonded Carbon Filter, 1 ea. (2 required)
No. ACFHEPA18	HEPA Filter, 1 ea. (2 required)
No. ACFPRE4	Pre-Filters, 12 ea. (2 required)

* Light kit is included on 48" Workstations.

Advanced Forensic Workstations

These workstations are for departments that process a large volume of evidence with powder or chemicals and don't want to change filters between applications. This system uses a dual filter bed and these workstations meet and exceed OSHA and ANSI Z9.5 standards and guidelines. Available in 110V or 220V.



32" Workstations

No. AC6200A	Advanced Workstation, 32"
No. ACALGFL	Optional External Fluorescent Light Kit*
No. ACA1011	Optional Steel Cart, 34" fixed height
No. ACF100	Bonded Carbon Filter, 1 ea.
No. ACFHEPA	HEPA Filter, 1 ea.
No. ACFPRE1	Pre-Filters, 12 ea.

* Light kit must be ordered at time of purchase.

48" Workstations

No. AC6400A	Advanced Workstation*, 48"
No. ACA1039	Optional Steel Cart, 34" fixed height
No. ACF10018	Bonded Carbon Filter, 1 ea. (2 required)
No. ACFHEPA18	HEPA Filter, 1 ea. (2 required)
No. ACFPRE4	Pre-Filters, 12 ea. (2 required)

* Light kit is included on 48" Workstations.

Ductless Identification WorkStation

These ductless fume hoods are ideal to protect you and your team from toxic gases, particles, and residual cyanoacrylate and carbon-based powders during forensic analysis. Other commonly used chemicals, such as methanol, xylene, and acetone are also contained within the workstation. Unlike other workstations in which your nose detects when to change the filter, the AirSafe Controller tells you, giving you one less thing to worry about. Available in 110V or 220V.



No. AC4000A	Identification Workstation, 48"
No. ACA1041	Optional Steel Cart for AC4000A, 34" fixed height
No. AC5000A	Identification Workstation, 60"
No. ACA1051	Optional Steel Cart for AC5000A, 34" fixed height
No. ACF100	Bonded Carbon Filter for ID Workstations, 1 ea.
No. ACFHEPA	HEPA Filter For ID Workstations, 1 ea.
No. ACFPRE2	Pre-Filters for ID Workstations, 12 ea.

PCR Workstation

The AC600 Series PCR Workstations combine ISO 5 HEPA-filtered air with UV light irradiation for the ultimate DNA/RNA manipulation and amplification work area. Cross-contamination during amplification of DNA and RNA can lead to results that are inaccurate, costing the lab technician valuable time and reagents. PCR Workstations minimize this risk by keeping airborne contaminants away from samples and irradiating work surfaces and tools between amplifications.



No. AC632DB	PCR Workstation Dead Air Box w/timed UV light, 32"
No. AC648DB	PCR Workstation Dead Air Box w/timed UV light, 48"
No. AC632LFUVC	Combo Unit w/Laminar Air Flow & timed UV light, 32"
No. AC648LFUVC	Combo Unit w/Laminar Air Flow & timed UV light, 48"

NARKsafe™ Illicit Substance Testing Workstation

Fentanyl-related deaths are increasing as the opioid epidemic increases worldwide. Fentanyl is deadly if swallowed, inhaled, or absorbed through the skin, so being protected when handling suspected substances is paramount. NARKsafe™ fume hood enclosures are ideal for protecting professionals during the forensic analysis of fentanyl and other dangerous substances. Only this system offers a turbulence-free, horizontal laminar airflow with dual HEPA filtration.

NARKsafe™ enclosure provides a negative pressure environment to pull any particulate away from the operator and eliminate end-user exposure. It also allows for the addition of a bonded carbon filter, so analysis of other chemical solutions or marijuana exhibits can be safely handled in the same workspace.



No. ACDD760	NARKsafe™ 36" Powder Safety Workstation, 110V AC w/prefilter, carbon filter & HEPA filters
No. ACDD760220	NARKsafe™ 36" Powder Safety Workstation, 220V AC w/prefilter, carbon filter & HEPA filters
No. ACDD770	NARKsafe™ 48" Powder Safety Workstation, 110V AC w/prefilter, carbon filter & HEPA filters
No. ACDD770220	NARKsafe™ 48" Powder Safety Workstation, 220V AC w/prefilter, carbon filter & HEPA filters
No. ACDD780	NARKsafe™ 72" Powder Safety Workstation, 110V AC w/prefilter, carbon filter & HEPA filters
No. ACDD780220	NARKsafe™ 72" Powder Safety Workstation, 220V AC w/prefilter, carbon filter & HEPA filters