



Ductless Fume Hoods, Chambers & Drying Cabinets

Ductless fume hoods, work stations, DrySafe™ evidence drying cabinets, and CyanoSafe™ cyanoacrylate fuming chambers are important tools for any lab. As ductless solutions, these items can be placed anywhere in your lab space to give you flexibility in your layout. They are also popular options in our mobile crime lab vehicles.

What are Ductless Evidence Drying Cabinets and Ductless Forensic Workstations?

- Ductless Evidence Drying Cabinets are ventilated, filtered enclosures which safely dry various items of evidence in a contaminant-free environment. This evidence is suspected of containing physiological fluids, such as blood, semen, urine, saliva, and fecal matter.
- Ductless Forensic Workstations are filtered and safe workspace enclosures to process physical evidence using latent print powders, chemical reagents, and vapors.
- Ductless CyanoSafe cyanoacrylate chambers offer larger self-contained space to process evidence using fuming techniques safely and efficiently.

Who needs these Cabinets and Workstations?

Anyone involved with the technical analysis and testing of crime scene evidence.

Why are these Cabinets and Workstations important?

They're important for two reasons: evidence integrity and safety. A cabinet will protect the evidence from cross-contamination and the technician from possible airborne pathogen contamination. Workstations are safety devices made to prevent toxic, flammable or noxious materials from entering the work atmosphere.



Often Bought Together:
Indicates items often purchased in conjunction with other items.

DrySafe™

DrySafe™ Evidence Drying Cabinet

Dry and store evidence with our DrySafe Forensic Evidence Drying Cabinet. DrySafe™ cabinets are designed to protect the operator from harmful bacteria, viruses and putrid odors while ensuring the integrity of your evidence by protecting it from cross-contamination during the drying process. Filters are included with all DrySafe™ evidence drying cabinets.

See below for available sizes.
Available in 110V & 220V.



DrySafe™ Features

- All-white, structural .375" (9mm) polypropylene construction-thermally fused to provide seamless design and one-piece construction-NO MORE RUST!
- Exhaust air is HEPA-filtered to remove viral and bacterial pathogens plus other particulates to 99.997% efficiency at 0.3 microns
- Bonded carbon filtration removes putrid odors and other gases. No after filter is required since the unit uses a unique bonded carbon filter-NO FILTER DUST!
- AirSafe modular automatic controller increases blower speed to optimize airflow when doors are opened
- Easily cleaned to prevent cross-contamination between cases and evidence
- Shelves and stainless steel drying rod
- Locking front doors of .375" (9mm) Lexan with safety clasps
- Units are available in various widths with 28" (71.1cm) depth. No ducting required. Unit operates from a standard 110V or 220V electrical outlet
- Modular automatic waste pump to remove waste water up to 200' (61m) from cabinet
- Each DrySafe includes Auto controller, auto waste pump, 3 removable/collapsible shelves and cold-water hook-up
- Gas sensor
- Adjustable leveling feet or locking casters
- Units are shipped ready to use with all necessary filters

No. ACEVD30A	DrySafe™, 30" x 28" x 84"
No. ACEVD36A	DrySafe™, 36" x 28" x 84"
No. ACEVD48A	DrySafe™, 48" x 28" x 48"
No. ACEVD60A	DrySafe™, 60" x 28" x 84"
No. ACEVD72A	DrySafe™, 72" x 28" x 84"
No. ACEVD96A	DrySafe™, 96" x 28" x 84"

DrySafe™ Start-up Kit

We put together this kit so you have everything you need to start using the DrySafe™ evidence drying cabinet.



ACEVD34 Contents:

- 4- Plastic hangers w/hooks, small
- 10- Plastic hangers, large
- 5- ACEVDBT Evidence tags, blue
- 5- ACEVDRT Evidence tags, red
- 1- Waste container, 5 gal. (18.9L) with hose
- 1- Kraft paper inserts, 10 pk.
- 1- ACFPRE Pre-Filter, 10 pk.
- 2- Sponges
- 1- ACEVD171 bottle of Solucide®
- 1- Personal Protection Pack Consisting of:**
 - 1- Gown
 - 1- Latex Gloves, pair
 - 1- Mask, Fluid shield w/Splash Guard
 - 1- Hand Wipe, Antimicrobial
 - 1- Biohazard Waste Bag

No. ACEVD34 **DrySafe™ Startup Kit**

No. ACEVDCLSEP **Clothing Separator, 23" W x 58" L x 1/8" thick**

DrySafe™ Replacement Filters

Bonded Carbon-Activated Filter

Use this filter to absorb the fumes and odors associated with drying bloody articles.



HEPA Filter (ACFHEPA)

Highly efficient filter for particles, such as toxic powders, asbestos, lead, and fingerprint powders, etc.



Particulate Pre-Filter (ACFPRE)

This filter removes sub-micron particulates to filter out contamination.



No. ACF300 **Bonded Carbon-Activated Filter for DrySafe**

No. ACFHEPA **HEPA Filter for DrySafe**

No. ACFPRE **Pre-Filters for DrySafe, 12 ea.**

Pricing Information:
For current pricing visit
www.sirchie.com, or
call 800.356.7311



Often Bought Together:
Indicates items often
purchased in conjunction
with other items.

Kraft Paper Liners

Federal guidelines recommend that you should place a new paper liner on the cabinet bottom before each use. You should retain this liner for potential trace evidence.



No. ACEVD351 Kraft Paper Liners, 25" x 29", 100 ea.

Kraft Evidence Bags and Paper Roll

These brown Kraft Evidence bags are pre-printed with all the necessary chain of possession and identification data. They are durable, breathable and available in four sizes for a variety of evidence packaging. Use our Kraft Paper on a roll for items that are too large for bags.



Often Bought Together:
(SM1000) Sirchmark™
Evidence Integrity Tape



No. EB000P Kraft Paper Bags, 5" x 9 7/8" x 3 1/8", 100 ea.

No. EB001P Kraft Paper Bags, 7" x 13 3/4" x 4 1/2", 100 ea.

No. EB002P Kraft Paper Bags, 8" x 18" x 5", 100 ea.

No. EB003P Kraft Paper Bags, 12" x 18" x 7", 100 ea.

No. KRP100 Kraft Paper Roll, 36" x 1200'

SearchBreathe Breathable Evidence Bags

This pouch is ideal for evidence items that need breathing capability and visibility. It's ok if the evidence isn't dry when you store it in the pouch.

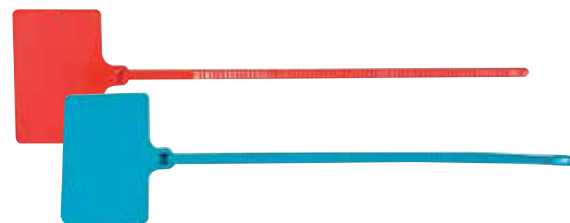


No. BEP812P Breathable Evidence Pouch, 8" x 12", 100 ea.

No. BEP1015P Breathable Evidence Pouch, 10" x 15", 100 ea.

Evidence Tags

Federal guidelines recommend using colored tags to indicate drying cabinet status. Blue represents a clean cabinet and Red represents cabinet in use. Space is provided for writing information. Length is 12".



No. ACEVDRT Red Evidence Tags, 25 ea.

No. ACEVDBT Blue Evidence Tags, 25 ea.

Solucide Disinfectant Solution

Solucide is an EPA-registered high-level disinfectant and deodorizer spray recommended for cleaning the evidence drying cabinet between cases. FDA approved.



Often Bought Together:
(SF0081) Black Nitrile Gloves

No. ACEVD171 Solucide, 16 oz, 1 ea.

No. ACEVD174 Solucide, 16 oz, 4 ea.

CyanoSafe™

CyanoSafe™ Fuming Chambers and Mini-CyanoSafe™

These fuming chambers are designed to safely process items using the cyanoacrylate fuming method. It provides a controlled environment for processing latent fingerprints on nonporous surfaces while eliminating your exposure to hazardous cyanoacrylate fumes. It features AirSafe, an automatic safety controller of the filter conditions. Available in a benchtop or free-standing design, in 110V or 220V.

CyanoSafe™ Features:

- All structural polypropylene construction
- Vapor-proof fluorescent light
- Audible and visual alarms
- Gas sensor
- AirSafe™ automatic safety controller for system monitoring
- Hanging rods and clips
- Operates from a standard 110-volt or 220-volt electrical outlet
- Cyanoacrylate accelerator with temperature shut-off
- Brushless, sparkless motor
- Clip to mount Control Strip



No. CAS24 mini-CyanoSafe™, Benchtop, 24"

No. ACF10018 mini-CyanoSafe™ Hybrid Bonded Carbon Filter, ea.

No. CAS30 CyanoSafe™, Benchtop, 30"

No. CAS30T CyanoSafe™, Free-Standing, 30"

No. CAS48 CyanoSafe™, Benchtop, 48"

No. CAS48T CyanoSafe™, Free-Standing, 48"

No. CAS60T CyanoSafe™, Free-Standing, 60"

CyanoSafe Start-Up Kit

The ideal kit to get everything you need to start using your CyanoSafe Fuming Chamber. Available for CyanoSafe and Mini-CyanoSafe.



CAS10 Contents:

- 1- CNA103 OMEGA-PRINT Fingerprint Developer with 4 Applicator Bottles, 16 oz
- 1- CNA106 OMEGA-PRINT Disposable Fuming Trays, 25
- 1- CNA110 CYANO-BLOC Treatment Pads, Set of 5
- 1- FR201 Fuming Control Cards, Pad of 50
- 1- ACFPRE Pre-Filters for CyanoSafe, Pack of 12

No. CAS10 CyanoSafe™ Start-up Kit

CyanoSafe™ Replacement Filters

Bonded Carbon-Activated Filter

Use this filter to absorb the fumes associated with the cyanoacrylate fuming process.



Particulate Pre-Filter (ACFPRE)

This filter removes sub-micron particulates to filter out contamination.



No. ACF100H Hybrid Bonded Carbon Filter for CyanoSafe™, ea.

No. ACFPRE Pre-Filters for CyanoSafe™, 12 ea.

Pricing Information:
For current pricing visit
www.sirchie.com, or
call 800.356.7311



Often Bought Together:
Indicates items often
purchased in conjunction
with other items.

Dusting Stations

Down Draft Dusting Station

This station gives you or your team critical protection from potentially harmful powders and particulates associated with latent print processing. The station pulls air away from you in two directions: downward and to the rear of the workstation, keeping print powder particulates away from you. It's also easy to maintain and clean and it's light enough to be moved anywhere (around the lab or to crime scenes). Units ship with all filters necessary for operation.



Features:

- Construction: Main Body- Thermally-fused white polypropylene
- Work Surface-Stainless Steel, removable
- Electrical: 110V AC or 220V AC
- Filtration: HEPA, 99.997% at 0.3 microns



No. DDS24	Down Draft Dusting Station, 24" x 17 1/2" x 24"
No. DDS36	Down Draft Dusting Station, 36" x 17 1/2" x 24"
No. DDS48	Down Draft Dusting Station, 48" x 17 1/2" x 24"
No. ACFHEPA8	24" Replacement HEPA Filter
No. ACFHEPA18	36" Replacement HEPA Filter
No. ACFHEPA22	48" Replacement HEPA Filter

Latent Print Dusting Station

Our stations provide superior protection to you or your team while dusting items with a variety of latent print powders. Streamlined air flow pulls particulates away from your breathing zone into a filtration zone. This air flow works because:

- Print powders have a variety of particle sizes and the only effective way to capture the smallest to the largest particles is by pulling them away from your breathing zone.
- Lighter and smaller particles rise while heavier ones will fall to the base and can be cleaned.
- To provide personal protection to you, our station uses an upward airflow
- Our dusting stations have been independently tested for powder containment.



32" Workstations

No. DS100A	Latent Print Dusting Workstation, 32" x 42" x 24"
No. ACALGFL	Optional External Fluorescent Light Kit*
No. ACA1011	Optional Steel Cart, 34" fixed height
No. ACFHEPA	HEPA Filter for DS100A, 1 ea.
No. ACFPRE	Pre-Filters for DS100A, 1 ea.

* Light kit must be ordered at time of purchase.

48" Workstations

No. DS200A	Latent Print Dusting Workstation*, 48" x 42" x 24"
No. ACA1039	Optional Steel Cart, 34" fixed height
No. ACFHEPA18	HEPA Filter for DS200A, 1 ea. (2 required)
No. ACFPRE4	Pre-Filters for DS200A, 12 ea. (2 required)

* Light kit is included on 48" Workstations.

Forensic Workstations

Basic Forensic Workstations

Ideal for smaller departments and labs to protect your team against the dangerous particulates of dust and fumes from fingerprints powders, cyanoacrylate, iodine, Ninhydrin, and DFO, and drug identification using solvents. Additionally, it can be fitted with a bonded carbon-activated filter for gases or a HEPA filter for particulate containment. Available in 110v or 220V.



32" Workstations

No. AC632C	Carbon Workstation, 32"
No. AC632H	HEPA Workstation, 32"
No. ACALGFL	Optional Fluorescent Light Kit for 32" Workstation*
No. ACA1011	Optional Steel Cart, 34" fixed height
No. ACF100	Bonded Carbon Filter, 1 ea.
No. ACFHEPA	HEPA Filter, 1 ea.
No. ACFPRE	Pre-Filters, 12 ea.

* Light kit must be ordered at time of purchase.

48" Workstations

No. AC648C	Carbon Workstation*, 48"
No. ACA1039	Optional Steel Cart, 34" fixed height
No. ACF10018	Bonded Carbon Filter, 1 ea. (2 required)
No. ACFHEPA18	HEPA Filter, 1 ea. (2 required)
No. ACFPRE4	Pre-Filters, 12 ea. (2 required)

* Light kit is included on 48" Workstations.

Advanced Forensic Workstations

These workstations are for departments that process a large volume of evidence with powder or chemicals and don't want to change filters between applications. This system uses a dual filter bed and these workstations meet and exceed OSHA and ANSI Z9.5 standards and guidelines. Available in 110V or 220V.



Features:

- Large vertical workspace
- 360 degrees of visibility for ease of use
- AirSafe Automatic Controller maintains airflow
- Integral base constructed of polypropylene
- Extremely quiet operation
- No installation cost
- Optional cart available

32" Workstations

No. AC6200A	Advanced Workstation, 32"
No. ACALGFL	Optional External Fluorescent Light Kit*
No. ACA1011	Optional Steel Cart, 34" fixed height
No. ACF100	Bonded Carbon Filter, 1 ea.
No. ACFHEPA	HEPA Filter, 1 ea.
No. ACFPRE1	Pre-Filters, 12 ea.

* Light kit must be ordered at time of purchase.

48" Workstations

No. AC6400A	Advanced Workstation*, 48"
No. ACA1039	Optional Steel Cart, 34" fixed height
No. ACF10018	Bonded Carbon Filter, 1 ea. (2 required)
No. ACFHEPA18	HEPA Filter, 1 ea. (2 required)
No. ACFPRE4	Pre-Filters, 12 ea. (2 required)

* Light kit is included on 48" Workstations.

Pricing Information:
For current pricing visit
www.sirchie.com, or
call 800.356.7311



PCR Workstation

The AC600 Series PCR Workstations combine ISO 5 HEPA-filtered air with UV light irradiation for the ultimate DNA/RNA manipulation and amplification work area. Cross-contamination during amplification of DNA and RNA can lead to results that are inaccurate, costing the lab technician valuable time and reagents. PCR Workstations minimize this risk by keeping airborne contaminants away from samples and irradiating work surfaces and tools between amplifications.



Standard Features:

- Microprocessor Controller
- No duct installation required
- UV Shelf with built-in pipettor holder
- Seamless plastic design—no joints or gaps in construction
- Lab event timer
- Clear polycarbonate shell for 360 degree visibility
- Extremely quiet operation <49dBA
- UV and fluorescent lights
- Digital light timer: 1-59 minutes

Safety Features:

- Automatic sash switch turns blowers off when sash is closed, maintaining an air barrier
- Filter and electronics are located above the workspace, eliminating the chance of a chemical spill on these sensitive areas
- Filter safety lockout to ensure correct filter replacement
- ISO 5 tested
- Low airflow alarm warns the user both visually and audibly
- Overlapping polycarbonate sash to prevent UV light exposure
- Polycarbonate and polypropylene design reflects UV energy
- Real time monitoring of installed filtration bed
- Sash safety switch automatically turns off UV light and activates the blower when sash is raised
- Shipped fully assembled

No. AC632DB PCR Workstation Dead Air Box w/timed UV light, 32"

No. AC648DB PCR Workstation Dead Air Box w/timed UV light, 48"

No. AC632LFUVC Combo Unit w/Laminar Air Flow & timed UV light, 32"

Ductless Identification WorkStation

Our Ductless Fume Hoods are ideal for protecting the operator from toxic gases and particulates used in routine analysis. The hoods are designed to protect the operator from residual cyanoacrylate and carbon-based powders used in forensic analysis. Other commonly used chemicals, such as methanol, xylene and acetone, are also contained. The AirSafe Controller automatically monitors filter life and airflow conditions. The AirSafe Controller, not your nose, detects when to change the filters. The lower sash is outfitted with an electromagnetic controller that senses when the sash is lifted. When the sash is raised, the blower increases velocity to compensate for the additional opening. All Forensic Identification Workstations face velocities exceed OSHA standards. Available in 110V or 220V.



Features:

- All surfaces in contact with corrosive fumes and liquids are structural polypropylene
- Horizontal baffles promote airflow pattern throughout the hood
- AirSafe Automatic Controller maintains airflow and monitors filter condition
- 30-Watt integral fluorescent light
- Filter condition monitored by AirSafe Automatic Controller; warns when bonded carbon and HEPA filters need changing

No. AC4000A Identification Workstation, 48"

No. ACA1041 Optional Steel Cart for AC4000A, 34" fixed height

No. AC5000A Identification Workstation, 60"

No. ACA1051 Optional Steel Cart for AC5000A, 34" fixed height

No. ACF100 Bonded Carbon Filter for ID Workstations, 1 ea.

No. ACFHEPA HEPA Filter For ID Workstations, 1 ea.

No. ACFPRE2 Pre-Filters for ID Workstations, 12 ea.



Often Bought Together:
Indicates items often
purchased in conjunction with
other systems.



Why NARKsafe™ is the only enclosure to use when testing illicit substances:

- Horizontal laminar airflow pattern
- Dual HEPA filtration
- HEPA filters with 99.997% efficiency rating for collecting 0.3-micron particles
- Electrostatically charged pre-filter to collect larger particulate and minimize clogging of the HEPA filter
- ASHRAE 110 testing adjustable face velocity
- Ability to replace contaminated filters under negative pressure
- Blue flooring to see substances clearly when testing



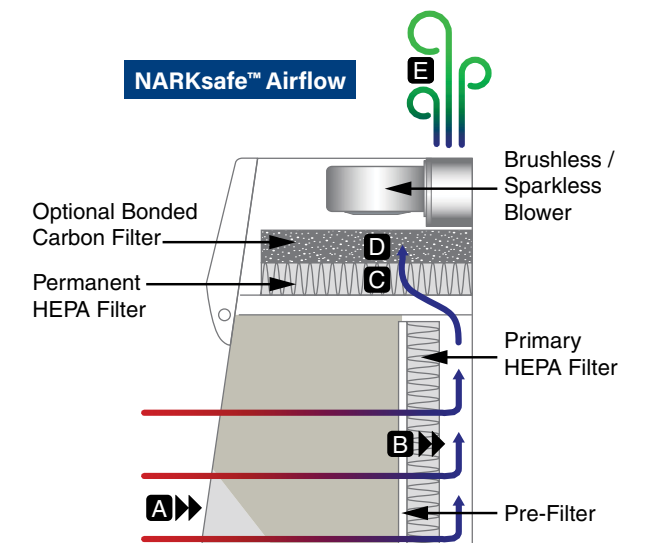
When testing illicit substances and changing filters, the operator should always follow Drug Enforcement Administration (DEA) and the Centers for Disease Control (CDC) guidelines for handling fentanyl, carfentanil and acetyl-fentanyl.

NARKsafe™ Illicit Substance Testing Workstation

Fentanyl-related deaths are increasing as the opioid epidemic increases worldwide. Fentanyl is deadly if swallowed, inhaled, or absorbed through the skin, so being protected when handling suspected substances is paramount. NARKsafe™ fume hood enclosures are ideal for protecting professionals during the forensic analysis of fentanyl and other dangerous substances. Only this system offers a turbulence-free, horizontal laminar airflow with dual HEPA filtration.



NARKsafe™ enclosure provides a negative pressure environment to pull any particulate away from the operator and eliminate end-user exposure. It also allows for the addition of a bonded carbon filter, so analysis of other chemical solutions or marijuana exhibits can be safely handled in the same workspace. Available in three widths: 36", 48", 72".



No. ACDD760 NARKsafe™ 36" Powder Safety Workstation, 110V AC w/prefilter, carbon filter & HEPA filters

No. ACDD760220 NARKsafe™ 36" Powder Safety Workstation, 220V AC w/prefilter, carbon filter & HEPA filters

No. ACDD770 NARKsafe™ 48" Powder Safety Workstation, 110V AC w/prefilter, carbon filter & HEPA filters

No. ACFPRE6 Replacement Prefilter for NARKsafe, 12 pack

No. ACEHEPA18 Replacement 1st HEPA Filter for NARKsafe, 1 ea.

No. ACFHEPA Replacement 2nd HEPA Filter for NARKsafe, 1 ea.

No. ACF100 Replacement Carbon Filter for NARKsafe, 1 ea.