

Ductless Forensic Containment Products

WHAT are Ductless Evidence Drying Cabinets and Ductless Forensic Workstations?

Ductless Evidence Drying Cabinets are ventilated, filtered enclosures designed to safely and efficiently dry and store various articles of physical evidence that are suspected of containing physiological fluids, such as blood, semen, urine, saliva and fecal matter that may require contaminant-free air drying prior to analysis.

Ductless Forensic Workstations are filtered enclosures designed to create a safe workspace for the processing of physical evidence employing development methods that use latent print powders, chemical reagents (ninhydrin, silver nitrate, DFO), vapors and esters.

WHO needs Ductless Evidence Drying Cabinets and Forensic Workstations?

Anyone involved in technical analysis and testing of crime scene evidence and/or receiving and storing contaminated evidence who is concerned with personal safety and evidence integrity.

WHY choose Ductless Drying Cabinets and Forensic Workstations?

Workstations require expensive ductwork to route the fumes, gases and odors outside. Ductless systems use bonded carbon and HEPA filtration to trap harmful and putrid gases, odors, chemicals and bacteria. Plus, the drying cabinet or workstation can be moved to any desired area.

HOW are Ductless Evidence Drying Cabinets and Forensic Workstations important to my department?

They are important for two reasons: evidence integrity and safety. A ductless drying cabinet will protect the evidence from cross-contamination and the operator from possible airborne pathogen contamination.

Putrid odors caused by decomposition as well as harmful viruses and bacteria are trapped by the filtration system which allows for a cleaner, safer work environment.



Ductless Fume Hoods & Drying Cabinets

Safety is Important. Proper ventilation in a forensic work area or laboratory is a major concern for both safety and comfort. The kinds and types of hazardous materials to be utilized and the designated work area should be reviewed with professional safety experts to determine and design an adequate ventilation system.

Workstation and/or laboratory hoods are safety devices made especially to prevent toxic, flammable or noxious materials from entering the work atmosphere. A schedule of evaluation and maintenance is essential to their effective use. A fume hood can never substitute for safe working practices or proper hazardous material handling or disposal.





No. ACEVD30A DrySafe™

DRYSAFE™ EVIDENCE DRYING CABINET

The DrySafe™ Evidence Drying Cabinet is designed to protect the operator and the environment from harmful bacteria, viruses and putrid odors associated with the drying of evidence, while ensuring the integrity of your evidence by protecting against cross-contamination. DrySafe™ is configured to clean the incoming “drying” air through pre-filtration while the cabinet exhaust air is cleaned by a combination of bonded carbon and HEPA filtration.

Decontamination of the DrySafe™ Evidence Drying Cabinet between cases eliminates residual DNA that may compromise evidence and affect subsequent serology. **SIRCHIE®** offers a highly effective decontamination spray that will provide high-level disinfection of the cabinet. When used to manufacturer’s specification, the decontamination spray will also disinfect prefilters and HEPA filters, removing any harmful pathogens that are present. A special chemisorptive bonded carbon filter is designed to remove the active (noncarcinogenic) ingredients in SIRCHIE®’s spray-down solution.

Prior to decontamination, the spray-down nozzle may be used to remove gross matter. Rinsing of DrySafe™ is easily accomplished with cold tap water. Collapsible shelves may also be removed for either high temperature sterilization or low-temperature, high-level disinfection. The automatic pump allows for easy disposal of waste water into a catch tank or nearby drain. The automatic waste pump is controlled by the AirSafe™ automatic safety controller with a built-in operational timer.

Filters are included with all DrySafe™ evidence drying cabinets.



No. ACEVD24A mini-DrySafe™



DrySafe™ Evidence Drying Cabinets & SwabSafe™

DrySafe™ Evidence Drying Cabinets come standard with the AirSafe™ automatic safety controller which adds many powerful features to the cabinet.



DrySafe™ units are shipped ready to use with all necessary filters

CATALOG NO.	DESCRIPTION	PRICE
ACEVD24A	mini-DrySafe™ Evidence Drying Cabinet, 24" x 30" x 23"	
ACEVD30BT*	DrySafe™ Evidence Drying Cabinet, 30" x 28" x 48"	
ACEVD30A	DrySafe™ Evidence Drying Cabinet, 30" x 28" x 84"	
ACEVD36A	DrySafe™ Evidence Drying Cabinet, 36" x 28" x 84"	
ACEVD48A	DrySafe™ Evidence Drying Cabinet, 48" x 28" x 84"	
ACEVD60A	DrySafe™ Evidence Drying Cabinet, 60" x 28" x 84"	
ACEVD60AS	DrySafe™ Evidence Drying Cabinet, Single Chamber, 60" x 28" x 84"	
ACEVD72A	DrySafe™ Evidence Drying Cabinet, 72" x 28" x 84"	
ACEVD72AS	DrySafe™ Evidence Drying Cabinet, Single Chamber, 72" x 28" x 84"	
ACEVD96A	DrySafe™ Evidence Drying Cabinet, 96" x 28" x 84"	
ACEVD96AS	DrySafe™ Evidence Drying Cabinet, Single Chamber, 96" x 28" x 84"	

* Benchtop Unit

SWABSAFE™ SWAB DRYER

SwabSafe™ is designed with a clear, lockable front door and a swab rack that will hold up to 30 individual swabs. The door gasket ensures a tight seal during operation of the unit so that no potential cross-contamination will occur. The swab dryer is configured to clean the incoming room air through HEPA filtration with an efficiency of 99.997% at 0.3 microns. Exhaust air is filtered with the same efficiency and serves to remove potentially harmful airborne particulate. *Required HEPA filters are included.*



CATALOG NO.	DESCRIPTION	PRICE
DSA50	SwabSafe™ Swab Dryer	
ACFHEPA8	Replacement HEPA Filter, each (2 required)	

Phone: +1.919.554.2244 Fax: +1.919.554.2266

Ductless Fume Hoods & Drying Cabinets

AIRSAFE™ FEATURES

- Monitoring of main HEPA filter life
- Automatic waste pump control and timing
- Automatic "lockout" feature ensures use of correct filters
- Self diagnostic ensures safe operation
- Timing of evidence drying cycle
- Two-speed automatic blower setting with user preset low speed from 0-100% of blower max! Allows for user control of drying time
- One-touch control of all cabinet features

COLLECTION OF TRACE EVIDENCE



SIRCHIE® recommends that a Kraft paper liner be placed on the bottom of the cabinet before each use



Evidence to be processed is then placed inside the cabinet



After processing evidence, the Kraft liner is retained for potential trace evidence



Between each case the main cabinet prefilter should be removed to collect any trace evidence

DSA50 SPECIFICATIONS:

Dimensions

Exterior: 20"W x 20"H x 20"D
Interior: 19"W x 20"H x 12"D

ACEVD34 CONTENTS:

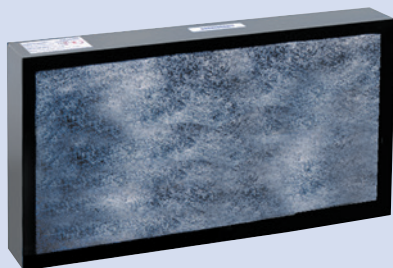
- 4- Plastic hangers w/hooks, small
- 10- Plastic hangers, large
- 5- ACEVDBT Evidence tags, blue
- 5- ACEVDRT Evidence tags, red
- 1- Waste container, 5 gal. (18.9L)
- 1- Kraft paper inserts, 10 pk.
- 1- ACFPRE Pre-Filter, 10 pk.
- 2- Sponges
- 1- ACEVD16 bottle of Sporidicin®
- 1- Waste tub w/hose
- 1- Personal Protection Pack Consisting of:
 - 1- Gown
 - 1- Latex Gloves, pair
 - 1- Mask, Fluid shield w/Splash Guard
 - 1- Hand Wipe, Antimicrobial
 - 1- Biohazard Waste Bag

DRYSAFE™ START-UP KIT

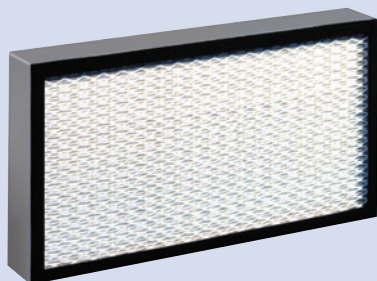
For use with DrySafe™ evidence drying cabinets. It includes all the necessary items for using the cabinet.



CATALOG NO.	DESCRIPTION	PRICE
ACEVD34	DrySafe™ Start-Up Kit	
ACEVDCLSEP	Clothing Separator, 23"W x 58"L x 1/8" thick	



ACF300



ACFHEPA

REPLACEMENT FILTERS

Carbon Filter (ACF300) bonded carbon filter is used in the evidence drying cabinets to absorb the fumes and odors associated with the drying and decay of bloody articles.

HEPA Filter (ACFHEPA) high efficiency particulate air (HEPA) filters with a 99.997% efficiency rating for collection at 0.3 microns. Used for containment of particles—toxic powders, asbestos, lead, fingerprint powders, etc.

Particulate Pre-Filter (ACFPRE) is an electrostatically charged fiber filter that removes sub-micron particulates. This filter has an efficiency rating of 99.997% @ 0.3 microns. Used to protect the absorption filters from contamination. Each absorption filter is fitted with a pre-filter at time of purchase. Sold in packs of 12.

CATALOG NO.	DESCRIPTION	PRICE
ACF30018	Bonded, Carbon-Activated Filter for Mini-DrySafe™, ea.	
ACFHEPA18	HEPA Filter for Mini-DrySafe™, ea.	
ACFPRE18	Main (Trace) Pre-Filters for Mini-DrySafe™, 12-pack	
ACFPRE15	Door Pre-Filters for Mini-DrySafe™, 12-pack	
ACF300	Bonded, Carbon-Activated Filter for Bench Top to 96" DrySafe™, ea.	
ACFHEPA	HEPA Filter for Bench Top to 96" DrySafe™, ea.	
ACFPRE	Pre-Filters for Bench-Top to 96" DrySafe™, 12-pack	

KRAFT PAPER LINERS

Federal guidelines recommend that a new paper liner be placed on cabinet bottom before each use and retained for potential trace evidence after evidence is processed. Liners are made of 50 lb. kraft paper and measure 25" x 29" (63.5cm x 73.66cm).

CATALOG NO.	DESCRIPTION	PRICE
ACEVD351	Kraft Paper Liners, 100 each	
ACEVD351	<i>Volume discount when ordering 5 units (500 each) or more</i>	

KRAFT EVIDENCE BAGS AND PAPER ROLL

Durable, breathable bags are available in four sizes. For larger items, use the Kraft paper roll.

CATALOG NO.	DESCRIPTION	PRICE
EB000P	Kraft Paper Bags, 5" x 9.875" x 3.125" (12.7cm x 25.1cm x 7.9cm), 100 each	
EB001P	Kraft Paper Bags, 7" x 13.75" x 4.5" (17.8cm x 34.9cm x 11.4cm), 100 each	
EB002P	Kraft Paper Bags, 8" x 18" x 5" (20.3cm x 45.7cm x 12.7cm), 100 each	
EB003P	Kraft Paper Bags, 12" x 18" x 7" (30.5cm x 45.7cm x 17.8cm), 100 each	
KRP100	Kraft Paper Roll, 36" x 1200' (92.4cm x 457m)	

SEARCHBREATHE™ BREATHABLE EVIDENCE POUCHES

The SEARCHBREATHE™ breathable evidence pouch is made especially for storing evidence items that need breathing capability — but also need visibility. It's okay if the evidence is not dry. The pouch's breathing capability allows evidence to dry while safely stored inside. One side of the pouch is Tyvek® with a pre-printed evidence/property form and the other side is made of clear plastic so you can see what's inside without opening the pouch. Pouches may be custom imprinted with your department's name in black ink (1000 bag minimum) and come prepackaged per 100.

CATALOG NO.	DESCRIPTION	PRICE
BEP812P	Breathable Evidence Pouch, 8" x 12", 100 each	
BEP1015P	Breathable Evidence Pouch, 10" x 15", 100 each	

EVIDENCE TAGS

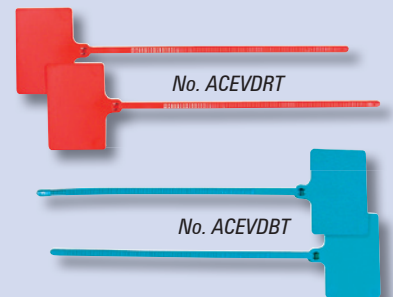
Federal guidelines recommend using colored tags to indicate drying cabinet status—**BLUE** represents a clean cabinet and **RED** represents a cabinet in use. Tags come in packs of 25 and provide a space for writing pertinent information.

CATALOG NO.	DESCRIPTION	PRICE
ACEVDRT	Red Evidence Tags, 12" (30.5cm), 25 each	
ACEVDBT	Blue Evidence Tags, 12" (30.5cm), 25 each	

SPORICIDIN® DISINFECTANT SOLUTION

Decontamination of the DrySafe™ Evidence Drying Cabinet between cases eliminates residual DNA that may compromise evidence and affect subsequent serology. Sporcidin® offers high-level disinfection and can also be used on prefilters and HEPA filters, removing any harmful pathogens that may be present.

CATALOG NO.	DESCRIPTION	PRICE
ACEVD16	Sporcidin® Disinfectant Solution, 22oz. (650ml), 12 each	





No. CAS30T

FEATURES:

- All structural polypropylene construction
- Vapor-proof fluorescent light
- Audible and visual alarms
- Gas sensor
- AirSafe™ automatic safety controller for system monitoring
- Hanging rods and clips
- Operates from a standard 110-volt or 220-volt electrical outlet
- Cyanoacrylate accelerator with temperature shut-off
- Brushless, sparkless motor
- Clip to mount Control Strip



No. CAS24

CAS24 SPECIFICATIONS:

Dimensions

Exterior: 24"W x 32"H x 18"D

Interior: 23.5"W x 17.5"H x 16.75"D

CYANOSAFE™ AND MINI-CYANOSAFE™ FUMING CHAMBERS

The CyanoSafe™ and mini-CyanoSafe™ Filtered Cyanoacrylate Fuming Chambers are designed to safely and effectively process evidentiary items using the cyanoacrylate fuming method. They provide a controlled environment for the processing of latent fingerprints on most nonporous surfaces while eliminating personnel exposure to hazardous cyanoacrylate fumes. Our CyanoSafe™ line utilizes solid-state heating elements that accelerate cyanoacrylate polymerization while providing proper humidity levels inside the chamber.

Both CyanoSafe™ and mini-CyanoSafe are equipped with the AirSafe™ automatic safety controller which monitors filter conditions and allows for the automatic processing of latent evidence.

Once the cyanoacrylate has been placed into the heating tray, simply press the button labeled "PROCESS" on the automatic safety controller. The chamber locks down and a humidity sensor is activated as the fuming process begins. Once the desired results are achieved the operator simply presses "PURGE" which automatically removes all harmful cyanoacrylate fumes from the chamber.

PHYSICAL DIMENSIONS

	CAS24	CAS30	CAS30T	CAS48	CAS48T	CAS60T	CAS72T
External Dimensions							
Width	24"	30"	30"	48"	48"	60"	72"
Depth	18"	30"	30"	30"	30"	30"	30"
Height	32"	54"	84"	54"	84"	84"	84"
Internal Dimensions							
Width	23.5"	29"	29"	47"	47"	59.25"	71.25"
Depth	16.75"	25"	25"	25"	25"	25.25"	25.5"
Height	17.5"	36"	66"	36"	66"	65.5"	65.5"

CyanoSafe™ and mini-CyanoSafe™ Filtered Cyanoacrylate Fuming Chambers come standard with the AirSafe™ automatic safety controller which adds many powerful features to the cabinet including:



- Timing of evidence processing cycle
- Monitoring of main Carbon filter life
- Controls humidity levels
- User set process time up to 60 minutes
- Self diagnostic ensures safe operation
- One-touch control of all chamber features

CATALOG NO.	DESCRIPTION	PRICE
CAS24	mini-CyanoSafe™ Ductless Cyanoacrylate Fuming Chamber, Benchtop, 24"	
ACF10018H	mini-CyanoSafe™ Replacement Hybrid Bonded Carbon Filter, each	
CAS30	CyanoSafe™ Fuming Chamber w/AirSafe™ Controller, Benchtop, 30" (76.2cm)	
CAS30T	CyanoSafe™ Fuming Chamber w/AirSafe™ Controller, Free-Standing, 30" (76.2cm)	
CAS48	CyanoSafe™ Fuming Chamber w/AirSafe™ Controller, Benchtop, 48" (121.9cm)	
CAS48T	CyanoSafe™ Fuming Chamber w/AirSafe™ Controller, Free-Standing, 48" (121.9cm)	
CAS60T	CyanoSafe™ Fuming Chamber w/AirSafe™ Controller, Free-Standing, 60" (152.4cm)	
CAS72T	CyanoSafe™ Fuming Chamber w/AirSafe™ Controller, Free-Standing, 72" (182.9cm)	

CATALOG NO.	FILTER DESCRIPTION	PRICE
ACF100H	Hybrid Bonded Carbon Replacement Filter for CyanoSafe™, each	
ACFPRE	Replacement Pre-Filters for CyanoSafe™, 12 pack	

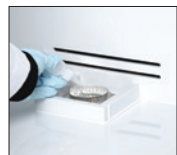
CyanoSafe™ Features



Bonded carbon filter is easily accessed with a special key to allow for removal and disposal

Gas sensor alerts operator when filter saturation occurs

All-white, structural polypropylene construction, provides a seamless design



Solid state heating elements provide cyanoacrylate vapor acceleration and humidity



Auto-lock chamber door remains locked until all fumes have been evacuated



Rear-mounted recirculation fan evenly distributes cyanoacrylate fumes throughout the chamber for optimum print development



AirSafe™ automatic safety controller monitors all functions of the cabinet including humidity levels, filter conditions, and airflow



Control clip provided for hanging test card to monitor print development



Hanging rods and clips provided to arrange evidence

Vapor proof light illuminates the entire process area allowing for easy viewing of the control print and other items of evidence

CYANOSAFE™ START-UP KITS

CyanoSafe™ Start-Up Kits are for use with CyanoSafe™ Fuming Chambers. Kits include items for fuming with cyanoacrylate using the CyanoSafe™.



No. CAS10

CATALOG NO.	DESCRIPTION	PRICE
CAS10	CyanoSafe™ Start-Up Kit	
CAS11	mini-CyanoSafe™ Start-Up Kit	

- Bonded Carbon Filter
- Gas Sensor Alert
- Solid State Heating Elements
- Auto-lock Chamber Door
- Rear-mounted Recirculation Fan
- AirSafe™ Controller
- Hanging Rods with Control Clips
- Vapor-proof Light

CAS10 CONTENTS:

- 1- CNA103 OMEGA-PRINT™ Fingerprint Developer w/4 applicator bottles, 16 oz. (454g)
- 1- CNA106 OMEGA-PRINT™ Disposable Fuming Trays, 25 ea.
- 1- CNA110 CYANO-BLOC™ Treatment Pads, 5 ea.
- 1- FR201 Fuming Control Cards, pad of 50
- 1- ACFPRE Pre-Filters for CyanoSafe™, 12/pk.

CAS11 CONTENTS:

- 1- CNA103 OMEGA-PRINT™ Fingerprint Developer w/4 applicator bottles, 16 oz. (454g)
- 1- CNA106 OMEGA-PRINT™ Disposable Fuming Trays, 25 ea.
- 1- CNA110 CYANO-BLOC™ Treatment Pads, 5 ea.
- 1- FR201 Fuming Control Cards, pad of 50



The DDS Series low-profile design allows for table-top or beneath-cabinetry installation. On-site crime scene processing is possible due to the light-weight construction.

CONSTRUCTION:

Main Body: Thermally-fused white polypropylene

Work Surface: Stainless Steel, removable

Electrical: 110V AC

Filtration: HEPA, 99.997% at 0.3 microns

Weight

DDS24: 55 lbs.

DDS36: 70 lbs.

DDS48: 90 lbs.

DOWN DRAFT DUSTING STATION

The DDS Series pulls air away from the operator in two directions. First, air is pulled downward into the stainless steel work surface to remove the heavier particulate found in latent print powder. Additionally, air is pulled horizontally to the rear of the workstation to capture the lighter particulate. Dual-zone filtration makes the Downdraft Dusting Station ideal for processing latent fingerprint evidence using powders.

The Downdraft Dusting Station fits perfectly on any counter top or beneath typical cabinetry. The low profile design can be placed in any law enforcement setting and is light enough to be carried to the crime scene for on-site processing.

The DDS Series operates at a very low noise level and since it recycles the room air it is extremely inexpensive to operate and maintain.

Fully constructed of thermally-fused polypropylene the DDS Series Downdraft Dusting Station is extremely easy

to clean. Simply remove the stainless steel tray to gain access to the spill tray for cleaning. The HEPA filter is constantly monitored and a warning light will appear in the work area when filter replacement is necessary. The simple-to-use design provides critical operator protection from potentially harmful powders and particulate associated with latent print processing.

The DDS Series provides unrestricted operator access making the dusting station perfect for processing both large and small evidentiary items.



The DDS36 Down Draft Dusting Station pictured.

CATALOG NO.	DESCRIPTION	PRICE
DDS24	Down Draft Dusting Station, 24"W x 17.5"H x 24"D	
DDS36	Down Draft Dusting Station, 36"W x 17.5"H x 24"D	
DDS48	Down Draft Dusting Station, 48"W x 17.5"H x 24"D	

LATENT PRINT DUSTING STATION

The DS100 and DS200 provide superior protection while dusting items of evidence with a variety of latent print powders. Even laminar flow air pulls potentially harmful particulate away from the officer's breathing zone and into a multi-level filtration zone.

The DS100 and DS200 are constructed from clear polycarbonate to allow excellent lighting conditions for observation by officers. Access into the latent print dusting station is easily obtained using the multiple folding sash doors. The sash doors provide a barrier between the process and the operator for added protection from smaller and lighter particulate.



The DS200 Latent Print Dusting Station pictured.

Due to a variance in particle size in all latent finger print powders, the only effective way to capture the smallest to the largest particles is by pulling them away from the operator's breathing zone. Lighter and smaller particulate have a natural tendency to rise, while heavier particulate will fall on the base of the dusting station and can simply be cleaned. The most effective way to provide personal protection from latent fingerprint powder is to use an upward flowing laminar flow workstation. Sirchie's latent print dusting stations have been independently tested for powder containment.

FEATURES:

- AirSafe™ Automatic Safety Controller for constant airflow and filter monitoring
- Clean 360° visibility
- No duct work required
- Extremely quiet operation < 49dB
- UL listed, 110V AC
- Available in 32" and 48" widths, 25" depth

DS100A SPECIFICATIONS:

Dimensions:

Outside: 32"W x 30"H x 25"D
(81.3cm x 76.2cm x 63.5cm)

Inside: 31"W x 20"H x 23"D
(78.7cm x 50.8cm x 58.4cm)

Weight: 120 lbs. (54.4kg)

DS200A SPECIFICATIONS:

Dimensions:

Outside: 48"W x 30"H x 25"D
(121.9cm x 76.2cm x 63.5cm)

Inside: 47"W x 20"H x 23"D
(119.4cm x 50.8cm x 58.4cm)

Weight: 160 lbs. (72.6kg)

CATALOG NO.	DESCRIPTION	PRICE
DS100A	Latent Print Dusting Workstation, 32" (81.3cm)	
ACALGFL	Optional External Fluorescent Light Kit	
ACA1011	Optional Steel Cart, 34" (86.4cm) fixed height	
ACFHEPA	HEPA Filter for DS100, each	
ACFPRE1	Pre-Filters for DS100, 12 pack	

CATALOG NO.	DESCRIPTION	PRICE
DS200A*	Latent Print Dusting Workstation, 48" (121.9cm)	
ACA1039	Optional Steel Cart, 34" (86.4cm) fixed height	
ACFHEPA18	HEPA Filter for DS200, each (2 required)	
ACFPRE4	Pre-Filters for DS200, 12 pack (2 required)	

*External Fluorescent Light Kit included.



The AC600 Series Workstations meet and exceed applicable OSHA and ANSI standards for ductless enclosures. (No. AC632H pictured above.)

FEATURES:

- All thermoplastic construction
- 360° visibility for ease of use
- Extremely quiet operation
- AirSafe™ Automatic Controller for automatic air flow detection and filter condition
- Optional sturdy cart bolts securely to the unit for portable operation
- 110V or 220V operation
- Integral polypropylene spill base
- No installation cost
- Unit available in 12V configuration—operates from vehicle cigarette lighter or optional battery pack. Great for field use.

AC632C/AC632H SPECIFICATIONS:

Dimensions:

Outside: 32"W x 30"H x 24"D
(81.3cm x 76.2cm x 61cm)
Inside: 31"W x 20"H x 23"D
(78.7cm x 50.8cm x 58.4cm)
Weight: 120 lbs. (54.4kg)

AC648C/AC648H SPECS:

Dimensions:

Outside: 48"W x 30"H x 24"D
(121.9cm x 76.2cm x 61cm)
Inside: 47"W x 20"H x 23"D
(119.4cm x 50.8cm x 58.4cm)
Weight: 160 lbs. (72.6kg)

AC632 & AC648

BASIC FORENSIC WORKSTATIONS

The AC600 Series Basic Forensic Workstations can be fitted with a bonded carbon-activated filter for gases or a HEPA filter for particulate containment. Each workstation has an integral base for containment of spillage. The AirSafe™ Automatic Controller allows for easy operation while monitoring airflow and filter condition.

Typical applications include:

- Drug identification using solvents and ethers in extractions to determine drug purity.
- Weighing of dangerous particulates.
- Removal of dust and fumes from fingerprint powders, cyanoacrylate, iodine, Ninhydrin and DFO.

Filters included with AC632 & AC648 workstations.

CATALOG NO.	DESCRIPTION	PRICE
AC632C	Carbon Workstation, 32" (81.3cm) w/AirSafe™ Controller & Filters	
AC632H	HEPA Workstation, 32" (81.3cm) w/AirSafe™ Controller & Filters	

CATALOG NO.	ACCESSORY DESCRIPTION	PRICE
ACALGFL	Optional External Fluorescent Light Kit for 32" Workstation	
ACA1011	Optional Steel Cart 34" (86.4cm) fixed height	
ACF100	Bonded Carbon Filter for AC632C, each	
ACFHEPA	HEPA Filters for AC632H, each	
ACFPRE	Pre-Filters for AC632C & AC632H, 12 pack	

CATALOG NO.	DESCRIPTION	PRICE
AC648C*	Carbon Workstation, 48" (121.9cm) w/AirSafe™ Controller & Filters	
AC648H*	HEPA Workstation, 48" (121.9cm) w/AirSafe™ Controller & Filters	

CATALOG NO.	ACCESSORY DESCRIPTION	PRICE
ACA1039	Optional Steel Cart 34" (86.4cm) fixed height	
ACF10018	Bonded Carbon Filter for AC648C, each (2 required)	
ACFHEPA18	HEPA Filters for AC648H, each (2 required)	
ACFPRE4	Pre-Filters for AC648C & AC648H, 12 pack (2 required)	

*External Fluorescent Light Kit included.

AC6200A & AC6400A ADVANCED FORENSIC WORKSTATIONS

The AC600 Series Advanced Forensic Workstation is designed for those laboratories that don't want to change the filters between applications. With a dual filter bed, the AC6200A and AC6400A are ideal for departments that process a large volume of evidence with powder and chemicals. Simply stack a HEPA filter with an electrostatically charged pre-filter attached in the bottom of the unit and place a bonded chemically absorbent Carbon Filter on top to complete the basic forensic application configuration.

The AC6200A and AC6400A both have a large vertical workspace which can accommodate a microscope or a fuming stand.

Partial List* of Approved Chemicals for 600 Series Workstations

Ninhydrin	Basic Yellow	Chloroform
DFO	Rhodamine 6G	Glacial Acetic Acid
Silver Nitrate	Cyanoacrylate	Isopropyl Alcohol
Small Particle Reagent	Methanol	
Iodine	Xylene	

***Call for other chemicals**

Filters included with AC6200A & AC6400A workstations.



Advanced Forensic Workstations are designed to meet and exceed OSHA and ANSI Z9.5 standards and guidelines.

FEATURES:

- Large vertical workspace
- 360° visibility for ease of use
- AirSafe™ Automatic Controller maintains airflow
- Integral base constructed of polypropylene
- Extremely quiet operation
- No installation cost
- Optional Cart available

AC6200A SPECIFICATIONS:

Dimensions:

Outside: 32"W x 42"H x 24"D
(81.3cm x 106.7cm x 61cm)
Inside: 31"W x 27"H x 23"D
(78.7cm x 68.9cm x 58.4cm)
Weight: 160 lbs. (72.6kg)

AC6400A SPECIFICATIONS:

Dimensions:

Outside: 48"W x 42"H x 24"D
(121.9cm x 76.2cm x 61cm)
Inside: 47"W x 32"H x 23"D
(119.4cm x 81.3cm x 58.4cm)
Weight: 185 lbs. (83.9kg)

CATALOG NO.	DESCRIPTION	PRICE
AC6200A	Advanced Workstation, 32" (81.3cm) w/AirSafe™ Controller & Filters	
ACALGFL	Optional External Fluorescent Light Kit for 32" Workstation	
ACA1011	Optional Steel Cart 34" (86.4cm) fixed height	
ACF100	Bonded Carbon Filter for AC6200A, each	
ACFHEPA	HEPA Filters for AC6200A, each	
ACFPRE1	Pre-Filters for AC200A, 12 pack	

CATALOG NO.	DESCRIPTION	PRICE
AC6400A*	Advanced Workstation, 48" (121.9cm) w/AirSafe™ Controller & Filters	
ACA1039	Optional Steel Cart 34" (86.4cm) fixed height	
ACF10018	Bonded Carbon Filter for AC6400A, each (2 required)	
ACFHEPA18	HEPA Filters for AC6400A, each (2 required)	
ACFPRE4	Pre-Filters for AC6400A, 12 pack (2 required)	

*External Fluorescent Light Kit included.



AC4000A with optional cart

FEATURES:

- All surfaces in contact with corrosive fumes and liquids are structural polypropylene—NO MORE RUST!
- Horizontal baffles promote airflow pattern throughout hood—NO DEAD SPOTS!
- AirSafe™ Automatic Controller maintains airflow
- 30-Watt integral fluorescent light
- Filter condition monitored by AirSafe™ Controller; warns when bonded carbon and HEPA filters need changing
- 110V or 220V operation

DUCTLESS IDENTIFICATION WORKSTATION

SIRCHIE®'s ductless fume hoods are ideal for protecting the operator from toxic gases and particulates used in routine analysis. The hoods are designed to protect the operator from residual cyanoacrylate and carbon-based powders used in forensic analysis. Other commonly used chemicals, such as methanol, xylene and acetone, are also contained. The AirSafe™ Controller automatically monitors filter life and airflow conditions. The AirSafe™ Controller, not your nose, detects when to change the filters. The lower sash is outfitted with an electromagnetic controller that senses when the sash is lifted. When the sash is raised, the blower increases velocity to compensate for the additional opening.

All Forensic Identification Workstations' face velocities exceed OSHA standards. (No. AC4000A pictured left.)

Filters included with all ductless polypropylene fume hoods.

POLYPROPYLENE DUCTLESS HOOD DIMENSIONS				
FOLDING SASH VERSION				
	AC3000A	AC4000A	AC5000A	AC6000A
EXTERNAL DIMENSIONS				
Width	36"	48"	60"	72"
Depth	30"	30"	30"	30"
Height	56"	56"	56"	56"
INTERNAL DIMENSIONS				
Width	35"	47"	59"	71"
Depth	25"	25"	25"	25"
Height	35"	35"	35"	35"

CATALOG NO.	DESCRIPTION	PRICE
AC3000A*	Identification Workstation, 36" (91.4cm) w/AirSafe™ Controller & Filters	
AC4000A**	Identification Workstation, 48" (121.9cm) w/AirSafe Controller & Filters	
AC5000A***	Identification Workstation, 60" (153.4cm) w/AirSafe Controller & Filters	
AC6000A****	Identification Workstation, 72" (182.9cm) w/AirSafe Controller & Filters	
ACF100	Bonded Carbon Filter for ID Workstations, each	
ACFHEPA	HEPA Filters for ID Workstations, each	
ACFPRE2	Pre-Filters for ID Workstations, 12 pack	
ACA1031	Optional Steel Cart for AC3000A, 34" (86.4cm) fixed height	
ACA1041	Optional Steel Cart for AC4000A, 34" (86.4cm) fixed height	
ACA1051	Optional Steel Cart for AC5000A, 34" (86.4cm) fixed height	
ACA1061	Optional Steel Cart for AC6000A, 34" (86.4cm) fixed height	

* Holds 2 Carbon, 2 HEPA and 2 Pre-Filters

** Holds 3 Carbon, 3 HEPA and 3 Pre-Filters

*** Holds 4 Carbon, 4 HEPA and 4 Pre-Filters

**** Holds 5 Carbon, 5 HEPA and 5 Pre-Filters (ACFPRE1)