



Tire, Toolmark & Footwear Casting

Footwear and other impressions are often the most overlooked forms of evidence in and around crime scenes. Properly preserved impression evidence can help link a person to a scene: through the shoes worn by the perpetrator, the tires on the vehicle driven by the perpetrator, and the tools used in a crime.

Impression evidence may exist in the following forms:

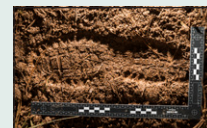
- Footprints: In soil, snow, dust, or on floors, decks, etc.
- Tire tracks: on driveways, roadways, fields, and other areas
- Tool marks: At the point of entry or within the crime scene
- Bite marks: on the victim

You should make a visual search for impression evidence before locating other physical evidence. This will help prevent damage to the impression, especially if you have secured the impression with a marker or tape.

Phase 1 Footwear Impression: Detection, Recovery & Identification

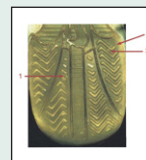


Students will get hands-on training for processing, photographing, lifting, casting, and preserving footwear impression evidence.



Phase 2 Footwear Impression: Examination, Comparison & Identification

Students will receive hands-on training in examining, comparing and identifying footwear evidence.



For more information about these and all other training courses, visit www.sirchie.com or call us at (800) 356-7311.

Liquid Silicone Rubber & Silicone Rubber Thinner

A great medium for producing exact reproductions of virtually any surface, including footprints, tire prints, tool and pry marks, dust prints, fingerprints, crash debris, and firearms. It has a long shelf life, isn't affected by temperatures and is quick-setting in three to five minutes.

The Silicone Rubber Thinner will thin the Liquid Silicone Rubber and allow it to flow more freely and cover a wider area.

No. 634C **Liquid Silicone Rubber, 1 lb. w/Catalyst**

No. 636C **Liquid Rubber Thinner, 16 oz.**



Silicone Rubber Release Agent

This agent works well to help you separate cured silicone from impression areas. Available in 4.5oz aerosol or 4oz. pump spray.



No. SRA10 **Silicone Rubber Release Agent, 4.5 oz. Aerosol**

No. SRA10A **Silicone Rubber Release Agent, 4 oz. Pump Spray**

No. 1 Silicone Casting Kit

Economical and space-saving, this kit has all you need for casting small crime scene impressions, such as single footprints, tool marks, and bite marks and for lifting powder-developed latent fingerprints from rough or textured surfaces.



No. SRK700

No. 1 Silicone Casting Kit

No. 2 Silicone Casting Kit

Created for casting larger impressions, this kit gives you more materials for the larger impressions you'll have at crime scenes.



No. SKR800

No. 2 Silicone Casting Kit

Liquid Silicone Casting Kit

You won't need another kit for the many surfaces you'll find at crime scenes. This kit has all the materials and items to help you cast tire and footprints in snow, mud, sand, or other environments and make accurate reproductions.



No. 640C

Liquid Silicone Casting Kit

Pricing information:
For current pricing visit
www.sirchie.com, or
call (800) 356-7311



Zip-Mix Plaster Casting

Eliminate the mess and difficulty of mixing plaster at the crime scene! Simply combine water and plaster in the zip-top bag and knead with both hands until you don't feel any lumps. The Zip-Mix set includes a pre-measured amount of plaster and water, enough for one adult-sized footprint.



No. ZMP100

Zip-Mix Plaster Casting

Casting Plaster

Ideal for tire and footprint evidence: the plaster components help slow set-up while mixing and reduce shrinkage while curing.



No. 639C1

Casting Plaster, 8 lbs.

Adjustable Casting Frames

Restrict the flow of your casting compounds with these adjustable casting frames. They can expand to six extra inches in length.



No. FCF100

Adjustable Casting Frame, 7 1/4" x 12-18"

No. FCF200

Adjustable Casting Frame, 12" x 18-24"

Disposable Casting Frames

As an alternative to traditional frames that you have to clean, these low-cost disposable frames can also adjust to different shoe sizes. Once the cast is dry, removal is easy since the casting material won't stick to the plastic frame. Works great with plaster or dental stone casting material.



No. IMP00001

Disposable Casting Frames, 4 sets

Flexible Mixing Bowls

Ideal for mixing liquid silicone rubber and plaster, these bowls have a non-stick surface to make for better pouring.



No. 641C

Flexible Mixing Bowl, 3 1/2" dia.

No. 642C

Flexible Mixing Bowl, 4 1/4" dia.

No. 643C

Flexible Mixing Bowl, 4 3/4" dia.

No. 644C

Flexible Mixing Bowl, 5 1/4" dia.

No. 646C

Flexible Mixing Bowl, 4-Piece Set

Tire and Footprint Plaster Casting Kit

Excellent for field investigations, this kit can help you cast exact reproductions of footprints and tire prints in snow, mud, sand, and dirt.



No. 639C

Tire and Footprint Plaster Casting Kit



Often Bought Together:
Indicates items often
purchased in conjunction with
other items.

SirchTrak Casting Kit

You'll find it easy to use SirchTrak dental stone in the field with premeasured casting materials in zip-lock bags. These bags are perfect for mixing casting material: just add water, mix, and pour into impression. Kit includes five each, 2 lb. applications, water bottle, wooden stirrers, as well as Dust and Dirt Hardener! We also sell SirchTrak dental stone separately in green or buff in a 50 lb. size.



No. STG100K SirchTrak Casting Kit, green

No. STB10050 SirchTrak Buff Dental Stone Material, 50 lbs.

No. STG10050 SirchTrak Green Dental Stone Material, 50 lbs.

Hard-Core Blue Casting Techniques

For large impressions, such as tire or foot impressions, it'll make your life easier to work with a medium that creates a very durable cast and requires no reinforcement. Hard-Core Blue is an all-purpose casting material that has Herculean strength, accurate reproductions, and is easy-to-use.

Hard-Core Blue Dental Stone Casting Material

We sell our casting material and solution in premeasured amounts for mixing to ensure a uniform mixture every time. This makes it easier to mix while you're at the scene. We sell three lbs. of casting material for 24 oz. of solution; eight lbs of casting material for 64 oz. of solution; and 50 lbs of casting material



Often bought with:
Dust & Dirt Hardener (No. 638CA),
Disposable Casting Frames (No. IMP00001)



No. HCB2001 Hard-Core Blue Casting Material, 3 lbs.

No. HCB2002 Hard-Core Blue Solution, 24 fl. oz.

No. HCB3001 Hard-Core Blue Casting Material, 8 lbs.

No. HCB3002 Hard-Core Blue Solution, 64 fl. oz.

No. HCB4001 Hard-Core Blue Casting Material, Buff, 50 lbs.

No. HCB4001B Hard-Core Blue Casting Material, Blue, 50 lbs.

Hard-Core Dental Stone Casting Material

This Dental Stone material comes in resealable bags that can be used to mix with water and pour the material.

- Easy and simple to use
- Produces good results
- 8,500 PSI, 0.12% expansion rate
- Available in buff and blue



Often bought with:
Dust & Dirt Hardener (No. 638CA),
Disposable Casting Frames (No. IMP00001)



No. HCB100Z Hard-Core Dental Stone, buff, 2 lbs.

No. HCB100BZ Hard-Core Dental Stone, blue, 2 lbs.

Zip-Mix Hard-Core Casting Combinations

Get your hard-core casting material ready to mix in a zip-top bag. This casting combo comes with premeasured casting and solution. Available in 3 lbs./24 oz. or 6 lbs./48 oz. sizes.



Often bought with:
Dust & Dirt Hardener (No. 638CA),
Disposable Casting Frames (No. IMP00001)



No. HCB100Z Zip-Mix, 3 lbs. material/24 oz. solution

No. HCB100 Zip-Mix, 6 lbs. material/48 oz. solution

Hard-Core Blue Tire and Footprint Casting Kit

Have this kit with you to get impressions found in snow, mud, sand, and soil. This kit has everything, including the necessary labels.



No. 639HCB Hard-Core Blue Tire and Footprint Casting Kit

Pricing information:
For current pricing visit
www.sirchie.com, or
call (800) 356-7311



Master Hard-Core Blue and Liquid Silicone Casting Kit

You will have all the materials necessary to recover many forms of impression evidence found at crime scenes with this Master Kit. From tool marks to tire tracks, this kit offers efficient thorough evidence collection with the flexibility for different environmental situations.



No. CSP1000 Master Hard-Core Blue & Liquid Silicone Casting Kit

Tire and Footprint Casting

Shake-N-Cast Impression Casting Kit

Because of its exceptional strength, Shake-N-Cast is fast becoming the preferred choice of crime scene specialists and crime laboratory personnel. It eliminates all the mess and guesswork with most casting methods. The kit contains casting material packaged with an internal premeasured water capsule – the mixture is always the correct consistency! Each kit is sufficient for casting a full-sized adult shoe print. Available in Gypsum, Buff, Blue, or SirchTrak Green Dental Stone and in sets of one or eight.



No. SNC42	Shake-N-Cast (Original Gypsum), 1 ea.
No. SNC428	Shake-N-Cast (Original Gypsum), 8 ea.
No. SNC42D	Shake-N-Cast (Buff), 1 ea.
No. SNC42D8	Shake-N-Cast (Buff), 8 ea.
No. SNC42B	Shake-N-Cast (Blue), 1 ea.
No. SNC42B8	Shake-N-Cast (Blue), 8 ea.
No. SNC42G	Shake-N-Cast (SirchTrak Green), 1 ea.
No. SNC42G8	Shake-N-Cast (SirchTrak Green), 8 ea.

Disposable Shake-N-Cast Kit

With four of our Shake-N-Cast pouches and two sets of our disposable casting frames, casting impressions has never been easier.



No. IMPSNCD4 Disposable Shake-N-Cast Kit

Master Shake-N-Cast Impression Kit

A complete field kit for making accurate impressions, you'll be equipped for taking impressions from any scene, from loose or sandy soil to snow for tire or footwear casting.



No. SNC100	Master Shake-N-Cast Kit, Plastic Case
No. TLK700	Master Shake-N-Cast Kit, Tactical Bag



Often Bought Together:
Indicates items often purchased in conjunction with other items.

Aerosol Dust and Dirt Hardener

Get impressions even in loose or sandy soil with our Dust & Dirt Hardener. It's a quick-drying, clear acrylic formula that adds strength to impressions, lessening the chance of detail damage.

No. 638CA

Aerosol Dust and Dirt Hardener, 15 oz.

Snow Impression Wax

Impression evidence found in snow or ice presents a unique set of difficulties for recovery. Using this wax provides insulation from the curling heat of the casting medium. It hardens the impression and prevents it from being crushed by the weight of the casting material.

No. SP1000

Snow Impression Wax, 15 oz.



Universal Evidence Photo Stand

This stand is an excellent alternative to traditional cumbersome camera tripods: It eliminates the problem of tripod legs showing up in evidential photographs. Photos will be focused on the evidence, not any other issues. Features are:

- English or metric scales on all four sides, printed on magnetic strips for easy replacement.
- Adjustable photo scale mounts and sturdy enough to support most cameras
- Designed to be assembled and disassembled for easy storage and transport

Often bought with:
Magnetic Scales, White, Eng. (UPS101W), Magnetic Scales, White, Metric (UPS102W), Magnetic Scales, Black, Eng. (UPS101B), Magnetic Scales, Black, Metric (UPS102B)



No. UPS100 **Universal Evidence Photo Stand w/English Scales**

No. UPS100M **Universal Evidence Photo Stand w/Metric Scales**

Bio-Foam Impression System

Here's a quick, economical, easy system for making footwear impressions without damaging or contaminating footwear. Press footwear on the Bio-Foam surface, use our Dust & Dirt Hardener and then pour the casting material. The high-density foams gives extremely fine details.



No. BIF100



No. BIF200

Often bought with:
Dust & Dirt Hardener (No. 638CA),
Shake-N-Cast Impression Kit (No. SNC42)



No. BIF100

Bio-Foam Impression Kit, 1 ea.

No. BIF101

Bio-Foam Impression Kit, 24 ea.

No. BIF200

Bio-Foam Impression Kit (pair size), 1 ea.

Footprint Residue Lifters

Lift the smallest particles in dust prints with these sensitive acrylic adhesive lifters.



No. FR001

Footprint Residue Lifters, 12 ea.

Rubber/Gel Footprint Lifters

Useful for transferring foot or footwear prints from dusty or dirty surfaces: they don't generate static electricity like standard lifting tapes.



No. 647C100

Rubber/GEL Footprint Lifter Set (1 black & 1 white)

SirchTrak Tire Tread and Footwear Print-Out System

To accurately compare tire print evidence, you should record the suspect's tire under the pressure of the suspected vehicle. The SIRCHTRAK is an easy-to-use "drive over" system that gives an impression of the tire under load, making a comparison more reliable.



No. STT100	SirchTrak Printout System
No. STT103	Replacement Printout Sheets, 10 ea.

EZID Stainfree Footwear System

Recording actual shoe print evidence is easy and clean with the EZID System. It consists of a pre-impregnated stainfree pad and pre-sensitized impression card. Excellent for taking elimination prints and gives detailed prints.



No. EZID400	EZID Stainfree Footwear Impression System
No. EZID402C	Replacement Inkless Impression Cards, 200 ea.
No. EZID403	Replacement Rejuvenator Ink, 0.5 oz.

Dust Print Lifting

The Electrostatic Dust Print Lifter

At crime scenes, mud, dirt, or blood impressions are usually located and recovered. However, dust prints are often overlooked. With this lifter, prints left in the dust or light soil can be recorded. The Lifter uses electrostatic energy to attract dust to our lifting medium, creating a mirror image of the original print.



No. ESP900	Electostatic Dustprint Lifter Kit
No. ESP902	Lifting Mats, 2 ft x 3 ft, 10 each
No. ESP905	Lifting Material, 12" x 25 ft, 1 roll
No. ESP906	Lifting Material, 12" x 50 ft, 1 roll
No. ESP909	Evidence Boxes for Lifting Mats, 10 ea.



Resulting Dust Print using the No. ESP900

Toolmark Impression Recovery

Durocast Impression Compound

One of the most accurate products available for impression reproductions, the putty-like substance lets you get impression castings of the indentations left by tools to force entry. You can use it on vertical and horizontal surfaces and it can reproduce minute details.



No. DOC101 **Durocast Compound w/Catalyst, 23.28 oz.**

No. DOC330 **Durocast Compound w/Catalyst, 11.64 oz.**

Durocast Impression Compound Kit

This kit contains all you need for casting an impression with Durocast contained in a handy plastic carrying case.



No. DOC1000 **Durocast Impression Compound Kit**

Mikrosil Casting Material Kit

Ideal for high contrast for microscopic examinations. Available in brown, black, gray, or white. Brown and gray are good for tool marks. White or black are good for lifting dusted latent prints from rough or textured surfaces.



No. MCM100B **Mikrosil Casting Kit, brown**

No. MCM100BL **Mikrosil Casting Kit, black**

No. MCM100G **Mikrosil Casting Kit, gray**

No. MCM100W **Mikrosil Casting Kit, white**

No. MCM100CA **Mikrosil Catalyst**

TexturLift Mikrosil Kit

Lifting prints from textured surfaces can be difficult but this kit makes it easier for you. You'll be able to get prints off computers, automobile dashboards and interior side panels, leather goods, luggage, or soft materials such as wet paint.



No. DSP100

TexturLift Mikrosil Kit

All-Purpose Evidence Recovery Kit

Lift tool marks, bite marks, and latent prints with this kit. Easy to use, it eliminates guesswork by mixing the exact proportions needed. It's the perfect method for lifting powdered latent prints from textured, irregular, or curved surfaces and the transparent formula lets you view the print while applying the mixture.



No. PVS200 **All-Purpose Evidence Recovery Kit**

No. PVS200W **Replacement White Cartridge, 75 ml**

No. PVS200B **Replacement Brown Cartridge, 75 ml**

No. PVS200BL **Replacement Black Cartridge, 75 ml**

No. PVS200BCE **Replacement Brown Ice Cartridge, 75 ml**

No. PVS200T **Replacement Transparent Cartridge, 75 ml**

No. PVS200NT **Replacement Spreader Tips, 40 ea.**

No. PVS200N **Replacement Nozzles, 40 ea.**

No. PVS200EG **Replacement Extruder Gun**