

# Blood Search, Identification & Enhancement

The advent of DNA technology has dramatically altered the approach of forensic scientists towards individualization of bloodstains found at the scene of a crime. The search for genetically controlled blood factors in bloodstains has been abandoned in favor of characterizing biological evidence by selected regions of our deoxyribonucleic acid (DNA).

This ability to individualize bloodstain evidence greatly enhances the significance that this type of evidence can have in a criminal investigation and the importance for the crime scene investigator to:

## SEARCH

- Luminol
- BLUESTAR®
- Lumiscene

## IDENTIFY

- Phenolphthalein
- Leuco-Malachite
- Hemastix®
- Hexagon Obti
- RSID™ Test Kits

## ENHANCE

- Acid Yellow
- Amido Black
- Coomassie Blue
- Hungarian Red
- Leuco Crystal Violet

## DOCUMENT

- Recognizing & Documenting Bloodstain Pattern Evidence Course
- Blood Spatter Kit
- Blood Spatter Documentation Kit
- Bloodstain Evidence Template

## BLOOD STAIN EVIDENCE.

In order for the investigator to conduct a thorough and comprehensive bloodstain evidence investigation, it is crucial for him/her to not only know how to proceed, but to have access to quality products, supplies and equipment that will ensure that their mission will be accomplished.



# Blood Search, ID & Enhancement

## VEHICLE SOLUTIONS!

We offer a full line of vehicles specifically designed and constructed for evidence collection.



*For more information see the Vehicle Section of this catalog or visit our website at [www.sirchie.com](http://www.sirchie.com)*

## EDUCATION OPPORTUNITY!

We offer an onsite course in Bloodstain Pattern Documentation that teaches students to recognize and document discrete bloodstain patterns.



*For more information see the Training Section of this catalog or visit our website at [www.sirchie.com](http://www.sirchie.com)*



## Blood Search, ID & Enhancement

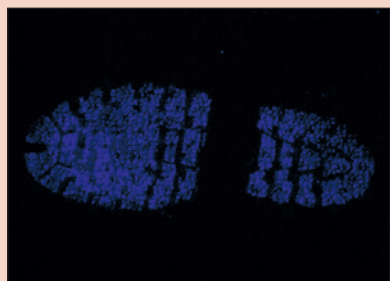
*The advantages of using Luminol for locating minute traces of blood are numerous:*

- *non-destructive to subsequent DNA profiling*
- *relatively safe compound if used according to directions*
- *simple to mix and apply.*

*The luminescence caused by Luminol when it comes into contact with blood must be viewed and photographed in near or total darkness.*



*Carpet with suspected blood print.*



*After luminol treatment—photographed with a tripod at f 4.5 for 20 seconds.*

### LUMINOL4 CONTENTS:

- 2- LUMINOL4B Bottles of Solution, 4 oz. (118ml) ea.
- 2- LUMINOL4A Packets of dry chemicals, Net Wt. 7.25g each
- 2- Spray Head Attachments

### LUMINOL8 CONTENTS:

- 2- LUMINOL8B Bottles of Solution, 8 oz. (236ml) ea.
- 2- LUMINOL8A Packets of dry chemicals, Net Wt. 14.5g each
- 2- Spray Head Attachments

### LUMINOL16 CONTENTS:

- 1- LUMINOL16B Bottle of Solution, 16 oz. (473ml)
- 1- LUMINOL16A Packet of dry chemicals, Net Wt. 25g
- 1- Spray Head Attachment

## Presumptive Blood Search

### LUMINOL INVISIBLE BLOOD REAGENT WITH SPRAY HEAD

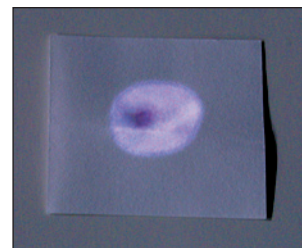
Luminol is a chemiluminescent substance that can be used as a presumptive test for the presence of blood. Making use of the peroxidase-like activity of the heme portion of hemoglobin, Luminol produces a bluish-white light that can be viewed in total darkness. Invisible blood stains react with the Luminol reagent by luminescing—darkness is essential. A useful test for searching large areas for blood, especially if the area has been cleaned up. Sensitivity: 1:100,000. Solution mix with spray head bottles available in three sizes or choose reagent powder only (makes 8 each, 4 oz. solutions).



CATALOG NO.	DESCRIPTION	PRICE
LUMINOL4	Luminol Reagent with Spray Head, 4 oz. (118ml), 2 each	
LUMINOL8	Luminol Reagent with Spray Head, 8 oz. (236ml), 2 each	
LUMINOL16	Luminol Reagent with Spray Head, 16 oz. (473ml), 1 each	
LUMINOL4A8	Luminol Reagent Powder (only), makes 8 each, 4 oz. solutions	

### LUMINOL DISCHAPS™ SET

Luminol reagent requires a darkened area for observation. This is the ideal reagent for "aged" or invisible blood stains. In fact, the older the stain, the brighter the reaction. Luminol is the most sensitive presumptive field test for blood (1:100,000). Set of six tests with contact paper.



*No. DCB300 Luminol luminescent reaction.*

CATALOG NO.	DESCRIPTION	PRICE
DCB300	Luminol DISCHAPS™ (Set of 6)	



# Presumptive Blood Search

# Blood Search, ID & Enhancement

## LUMINOL BLOOD TEST BELT KIT

Keep luminol ampoules nearby with this handy belt kit from **SIRCHIE®**. Great for use at crime scenes for preliminary blood testing. Kit includes supplies necessary for performing 3 tests.



## LUM300 CONTENTS:

- 3- 288L1 Luminol Ampoule Reagents
- 3- 288L2 Luminol Ampoule Reagents
- 1- 288FP Contact Filter Papers, 1" x 2" (2.5cm x 5.1cm), 25 ea.
- 3- 288DP Pipettes, Disposable w/capillary, 3ml bulb
- 3- KCP247 Sterile Water, 3ml
- 1- KCP306 Molded Plastic Belt Style Case w/foam insert; Dimensions: 2.25" x 4.25" x 4" (5.7cm x 10.8cm x 10.2cm)

CATALOG NO.	DESCRIPTION	PRICE
LUM300	Luminol Blood Test Belt Kit	

## LUMAVISION™ LUMINOL COMPANION ILLUMINATOR KITS

Searching for trace blood evidence with Luminol requires the area being searched to be darkened. LumaVision™ uses **RED** light which sharpens night vision, allowing your eyes to adjust to the darkness. When the luminescence of suspected blood occurs with the application of Luminol, the user will see this process more readily.

Once found, the next step is to photograph your suspected blood evidence. Set your tripod mounted camera over top of the luminescence, check the settings, turn off the LumaVision™, and take the required photos.

The LumaVision™ features 6 powerful Light Emitting Diodes (LEDs) driven by 3 AA-type alkaline batteries. The light offers bright, medium, and low intensity settings as well as fast, medium, and slow strobe effect. A seventh LED provides low power yellow light. A single set of batteries offers 10-12 hours of continuous light at the bright setting.



*LumaVision™ lights can be headband-mounted or handheld.*

*The LumaVision™ allows you to search for minute traces of blood and record evidence—all under the **red glow** of six powerful LEDs!*



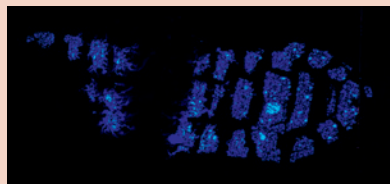
CATALOG NO.	DESCRIPTION	PRICE
LVL1000	LumaVision™ Master Kit	
LVL2000	LumaVision™ Basic Kit	

## LVL1000 CONTENTS:

- 1- LVL100 LumaVision™ Light
- 2- Luminol8A Chemical Packets, 12.5gm ea.
- 2- Luminol8B Mixing Solution, 8 oz. (237ml) ea.
- 2- Detachable Pump Sprayers
- 1- Headband
- 1- Belt Clip
- 3- AA Alkaline Batteries
- 1- Molded Carrying Case w/Pre-cut Foam Insert; Dimensions: 12.25" x 9" x 3.875" (31.1cm x 22.9cm x 9.8cm); Weight: 3.3 lbs. (1.5kg)

## LVL2000 CONTENTS:

- 1- LVL100 LumaVision™ Light
- 1- Headband
- 1- Belt Clip
- 3- AA Alkaline Batteries
- 1- Molded Carrying Case w/Pre-cut Foam Insert; Dimensions: 8.5" x 5.5" x 3.1875" (21.6cm x 14cm x 8.1cm); Weight: 1.45 lbs. (658g)



Photograph of shoeprint in blood on carpet—processed with BLUESTAR® and photographed in a darkened room using a tripod-mounted digital SLR (f 5.6 @ 30 seconds).

## BLUESTAR® FORENSIC KIT INCLUDES:

- 1 - Hermetically-sealed Bottle with 500ml (16 oz) Reagent
- 3 - Catalyst Tablets
- 1 - Fine Mist Atomizer

## BLUESTAR® MINI FORENSIC KIT INCLUDES:

- 2 - Bottles with 4 Oz (125ml) distilled water and fine mist atomizer
- 2 - Pairs of BLUESTAR Forensic Tablets

## BLUESTAR® FORENSIC TABLETS CONSISTS OF:

- 4- pairs of individually and hermetically sealed tablets. Each pair includes 2 beige tablet (reagent) and 2 white tablet (catalyst)

## BLUESTAR® 8 APPLICATION PACKAGE CONSISTS OF:

- 2- Tubes of tablets and User's Manual. The red top tube holds 8 (beige) reagents and the white top holds 8 (white) catalysts.

## BLUESTAR® FORENSIC KIT

The BLUESTAR® Forensic Kit gives the crime scene investigator a complete tool to determine the presence or absence of blood. The extreme sensitivity of BLUESTAR® allows the detection of bloodstains down to 1:10,000 dilutions, including minute traces that have been washed off, with or without detergent. Unlike other blood reagents, total darkness is not required. Subsequent DNA Typing and ABO Typing is possible because BLUESTAR® does not alter the DNA in suspect blood stains.



CATALOG NO.	DESCRIPTION	PRICE
FRA00001	BLUESTAR® Forensic Kit	

## BLUESTAR® FORENSIC MINI KIT

The BLUESTAR® Forensic Mini Kit was designed primarily for investigators searching limited areas or small objects for a quick verification of blood when a suspected crime scene is encountered. The Mini Kit is instantly ready - just add a pair of tablets to one of the bottles of distilled water. It's also more economical and practical for quick or limited investigations before the intervention of crime scene specialists. The Mini Kit provides two bottles for two independent investigations.



CATALOG NO.	DESCRIPTION	PRICE
FRA00002	BLUESTAR® Forensic Mini Kit	

## BLUESTAR® FORENSIC TABLETS

The BLUESTAR® Forensic Tablets combination is a compact and multi-use product. Each product provides the investigator with the capability of preparing 4 - 4 Oz (125ml) BLUESTAR® Forensic Working Solutions, or 1 - 16 oz (500ml) Solution. Preparation is easy, just mix with distilled water.

Our 8 Application BLUESTAR® Forensic Test package is a very compact and affordable multi-use tool.



CATALOG NO.	DESCRIPTION	PRICE
FRA00003	BLUESTAR® Forensic Tablets	
FRA00004	BLUESTAR® Forensic Tablets (8 Applications)	

# Presumptive Blood Search

## Blood Search, ID & Enhancement

### BLUESTAR® FORENSIC MAGNUM

BLUESTAR® Forensic Magnum is 3 times more powerful than the standard BLUESTAR® Forensic formulation and is specially formulated for the critical cases when searching for minute blood particles. It will detect even the microscopic droplets that have been projected onto an aggressor's clothing. The Magnum is also especially helpful in searching for blood on washed garments or other objects.



### BLUESTAR® FORENSIC MAGNUM INCLUDES:

- 1- Bottle containing 4 Oz (125ml) of chemiluminescent solution
- 1- Foil packet containing 3 tablets of oxidizer

CATALOG NO.	DESCRIPTION	PRICE
FRA00005	BLUESTAR® Forensic Magnum	

### HEXAGON OBTI

This rapid screening test presumes that a bloodstain is of human origin and helps the Investigator to determine whether or not to collect a sample as evidence. A positive result indicates a strong likelihood that the bloodstain is indeed human, and a lab analysis will later confirm or deny that presumption.

The Hexagon Obti test detects whole blood up to a dilution of 1:2,000,000. As few as 250 red cells are required for a positive result.



CATALOG NO.	DESCRIPTION	PRICE
FRA00006	Hexagon Obti - 24 Tests	
FRA00007	Hexagon Obti - 6 Tests	

### ECOSPRAY REFILLABLE MICRO SPRAYER

EcoSpray is a small, fully self-contained micro-sprayer with a disposable gas pressure reservoir that applicates fluids with a perfect mist quality (fineness, even coating and distribution of particles). Its performance with BLUESTAR® Forensic Magnum is outstanding. Simply attach the disposable pressure reservoir to the EcoSpray body unit, fill and attach the liquid container with BLUESTAR® solution. Press the button to spray BLUESTAR® in a uniform mist. EcoSpray can be tilted down at a 45° angle or even more without losing performance, a true advantage when it comes to spraying horizontal objects or surfaces.



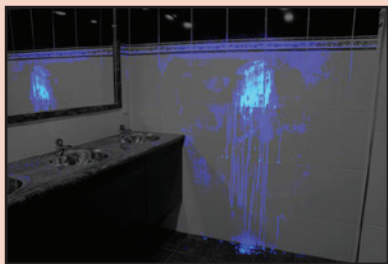
### ECOSPRAY SPECIFICATIONS:

- L x l x H : 105 x 50 x 130 mm
- Weight (empty) : 190 grams
- Container in crystal PETG + white PP screw cap
- Maximum capacity 125 ml / 4 oz
- Gas reservoir: Aluminum solid cast
- Resists internal pressure up to 18 bars
- Propels 440 ml / 15 oz
- Flow according to nozzle
- NOZZLE FLOW:**
- Diam. 0.50 mm 0.27 ml/s
- Diam. 0.70 mm 0.45 ml/s
- Diam. 0.90 mm 0.75 ml/s

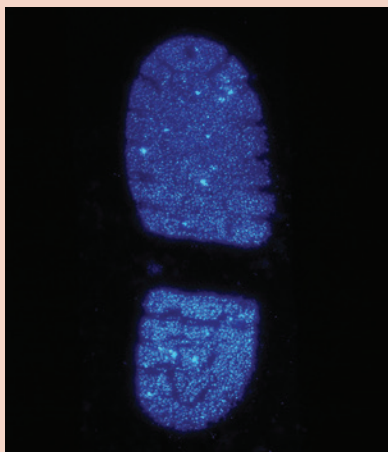
CATALOG NO.	DESCRIPTION	PRICE
ECSB01	EcoSpray Refillable Micro Sprayer	
ECSR02	EcoSpray Pressure Reservoir	
ECSC03	EcoSpray PETG Container w/cap, 4 oz. (125ml)	
ECSN04	EcoSpray Nozzle Set, 3 ea. (0,50 + 0,70 + 0,90 mm)	



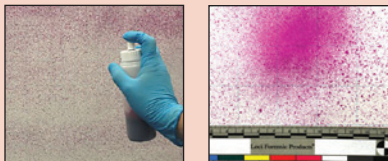
## Blood Search, ID & Enhancement



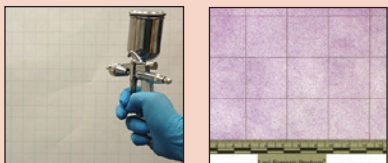
The photo above is a composite image of a Lumiscene-enhanced bloodstain with the room in normal light. The photo was taken at a crime scene in which an attempt was made by the perpetrator to clean the blood from the bathroom tile.



Above is a photo of a suspected shoeprint in blood on carpet—treated with Lumiscene and taken in a darkened room (f 4.4 at 30 seconds utilizing a tripod-mounted digital SLR).



Lumiscene distribution with typical pump spray—uneven coverage with over-saturation in some areas.



Lumiscene distribution with CSAIR—continuous, ultra-fine misting results in an light, even application.

## Presumptive Blood Search

### LUMISCENE ADVANCED LATENT BLOOD SEARCH SOLUTION

Lumiscene is designed to be the most efficient search method for latent blood at a crime scene. When there seems to be nothing, lumiscene can be utilized to detect minute traces of blood, allowing additional recovery of critical DNA and blood pattern evidence. Lumiscene is easy to use; add two activator tablets, mix and use. No measuring required.

Lumiscene offers more luminescent results than luminol and contains the lowest percentage of peroxide chemistry available, protecting DNA from degradation during processing. Lumiscene is the best choice to find the most evidence and protect DNA integrity.



CATALOG NO.	DESCRIPTION	PRICE
LSCENE01	Lumiscene Advanced Latent Blood Search Solution, 500ml	

### CSAIR FORENSIC AIR COMPRESSOR

The chosen application method for blood search solution is as important as the solution itself. Irreversible damage to the original appearance of the bloodstain pattern as well as dilution of the sample can occur, making DNA testing difficult or impossible.

CSAIR is the first compressor system designed specifically for the application of blood search solutions, such as Lumiscene. The CSAIR compressor produces continuous, contaminant-free air through the utilization of its unique carbon filter.

#### Features:

- Minimum use of Lumiscene, reducing the risk of DNA dilution or damage and blood pattern distortion.
- Continuous pressure and 32 ft. hose allow large areas to be screened for blood.
- Quiet operation, enabling comfortable communication at the crime scene.
- Both compressor and spray gun have stainless steel air path (no reaction with blood search solution and easy to clean).



Universal Plug Adapter Kit Available

CATALOG NO.	DESCRIPTION	PRICE
CSAIR01	CSAIR Forensic Air Compressor	

# Presumptive Blood Identification Products

## PHENOLPHTHALEIN REAGENT

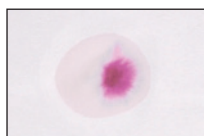
The key component of the Kastle Mayer reagent test, this premixed solution can be used in combination with ethanol and hydrogen peroxide in the laboratory as a confirmatory blood test. The solution requires no additional preparation.



CATALOG NO.	DESCRIPTION	PRICE
DCB101	Phenolphthalein Reagent, 4 oz, (118ml)	

## PHENOLPHTHALEIN DISCHAPS™ SET

This test is considered by many field technicians as being one of the most reliable presumptive tests for the presence of blood. With the use of this test, blood is indicated by a pink stain in just a few seconds. The set contains six individual tests with contact paper and 10cc bottle of ethyl alcohol. Sensitivity: 1:100,000.



No. DCB100  
Phenolphthalein  
color reaction.



CATALOG NO.	DESCRIPTION	PRICE
DCB100	Phenolphthalein DISCHAPS™ (Set of 6)	

## PHENOLPHTHALEIN BLOOD TEST BELT KIT

This convenient belt kit keeps phenolphthalein ampoules handy for blood testing. Includes supplies needed for 3 tests.



CATALOG NO.	DESCRIPTION	PRICE
PHENOL100	Phenolphthalein Blood Test Belt Kit	

# Blood Search, ID & Enhancement

*DISCHAPS™ packaging virtually eliminates the possibility of contamination of chemical reagents and dramatically increases shelf life. Reagents are contained within easily crushed glass ampoules. The ampoules are then sealed inside tough, flexible polyethylene dispenser tubes.*

## HOW TO USE DCB100



1. Moisten filter transfer paper with distilled water, apply to suspected bloodstain and remove.



2. Slide paper sleeve over ampoules and pinch each between the thumb and index finger to break (do not bend), then agitate for 30 seconds.



3. Apply one drop of ampoule liquid to the middle of the stain on the filter transfer paper and observe color reaction. To increase the sensitivity of the reaction use one drop of ethyl alcohol to lyse the stain on filter transfer paper.

## PHENOL100 CONTENTS:

- 3- 288PX1 PX1 Phenolphthalein Reagent Ampoules
- 3- 288PX2 PX2 Phenolphthalein Reagent Ampoules
- 1- 288FP Contact Filter Papers, 1" x 2" (2.5cm x 5.1cm), 25 ea.
- 3- 288DP Pipettes, Disposable w/capillary, 3ml bulb
- 3- KCP247 Sterile Water, 3ml
- 1- KCP306 Molded Plastic Belt Style Case w/ foam insert; Dimensions: 2.25" x 4.25" x 4" (5.7cm x 10.8cm x 10.2cm)

## Blood Search, ID & Enhancement

### About Leuco-Malachite

*Leuco-Malachite is somewhat less specific for the presumptive identification of blood than Phenolphthalein. However, its sensitivity is greater than Phenolphthalein, and because of this, it is of considerable value for subsequent testing upon completion of finding suspected blood with the use of products such as Luminol, Bluestar® and Lumiscene.*

#### LEUCO200 CONTENTS:

- 3- 288LM1 Leucomalachite Ampoule 1
- 3- 288LM2 Leucomalachite Ampoule 2
- 1- 288FP Contact Filter Papers, 1" x 2" (2.5cm x 5.1cm), 25 ea.
- 3- 288DP Pipettes, Disposable w/capillary, 3ml bulb
- 3- KCP247 Sterile Water, 3ml
- 1- KCP306 Molded Plastic Belt Style Case w/ foam insert;  
Dimensions: 2.25" x 4.25" x 4"  
(5.7cm x 10.8cm x 10.2cm)

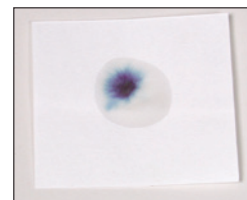
#### DCB400 CONTENTS:

- 1- DCB100 Phenolphthalein DISCHAPS™, 6 ea.
- 1- DCB200 Leucomalachite DISCHAPS™, 6 ea.
- 1- DCB300 Luminol DISCHAPS™, 6 ea.
- 1- DCB400C Chart, Sensitivity of Blood Test and Positive Reactions
- 1- DISW1 Distilled Water w/dropper, 1 oz. (30ml)
- 1- KCP138 Scalpel, Disposable, 5" (12.7cm)
- 1- DCB4001 Carrying Case, Textured, High-Density Polyethylene;  
Dimensions: 8.5" x 5.5" x 3.1875"  
(21.6cm x 14cm x 8.1cm);  
Weight: 1.15 lbs. (522g)

## Presumptive Blood Identification Products

### LEUCO-MALACHITE DISCHAPS™ SET

An intense blue/green color reaction in 3 seconds is presumptive evidence that blood is present. Leuco-malachite green has long been a favorite of field investigators because of its high sensitivity (1:10,000). Set of six tests with contact paper.



No. DCB200 Leuco-Malachite color reaction.

CATALOG NO.	DESCRIPTION	PRICE
DCB200	Leuco-Malachite DISCHAPS™ (Set of 6)	

### LEUCO-MALACHITE BLOOD TEST BELT KIT

Our belt kit keeps leuco-malachite ampoules handy for blood testing. Includes supplies needed for 3 tests.



CATALOG NO.	DESCRIPTION	PRICE
LEUCO200	Leuco-Malachite Blood Test Belt Kit	

### INVESTIGATOR'S FIELD BLOOD TEST KIT

This is a field blood test kit combining the three most efficient and effective reagents. The kit features Luminol, Leuco-Malachite, and Phenolphthalein packaged in DISCHAPS™ (disposable chemical applicators). This complete kit includes six DISCHAPS™ of each reagent, distilled water and contact test paper. Instructions and a color chart are mounted permanently in the kit.



CATALOG NO.	DESCRIPTION	PRICE
DCB400	Investigator's Field Blood Test Kit	



# Presumptive Blood Identification Products

# Blood Search, ID & Enhancement

## MASTER FIELD AND LAB BLOOD TEST KIT

This kit contains all the essential equipment for presumptive blood testing in the lab or any field investigation situation. The advantage of using this kit is that all the included reagents are furnished in pre-measured quantities in the solid state and sealed in glass ampoules. This method of packaging permits the mixing of reagents in the field without measuring to give optimum concentration and sensitivity. All the necessary support equipment is included.



CATALOG NO.	DESCRIPTION	PRICE
MBT288	Master Field and Lab Blood Test Kit	
MBT288R	Consumable Refill Pack (in Red)	

## LATENT BLOOD DETECTION KIT FOR DETECTION OF BLOOD PRINTS

In most violent crimes, a profusion of blood is usually a result. Blood prints can be found on the weapon, floor, furniture, and victim. In many instances, blood prints are not visible due to background color or the weakness of the blood print itself. To render these latent blood prints visible, the BT001 offers an extremely sensitive method for detection and development of bloody prints on surfaces like plastic, wood, coated papers, metal, and glass. Latent blood prints developed through the utilization of these reagents are very clear and chemically stable.



CATALOG NO.	DESCRIPTION	PRICE
BT001	Latent Blood Detection Kit	
BT001R	Consumable Refill Pack (in Red)	

## MBT288 CONTENTS:

- 18- 288DP Pipettes, Disposable, w/capillary and 3ml Bulb
- 2- 288FP Contact Filter Papers, 1" x 2" (2.5cm x 5.1cm), 25
- 6- 288L1 Luminol Ampoule Reagents, 1ml
- 6- 288L2 Luminol Ampoule Reagents, 2ml
- 6- 288LM1 Leucomalachite Ampoules 1, 1ml
- 6- 288LM2 Leucomalachite Ampoules 2, 2ml
- 6- 288PX1 PX1 Reagent Ampoules, Phenolphthalein, 1ml
- 6- 288PX2 PX2 Reagent Ampoules, Phenolphthalein, 2ml
- 2- DISW2 Bottles of Distilled Water, 2 oz. (59ml)
- 2- KCP122 Blood Collection Tubes w/EDTA, 7ml
- 1- KCP213 Jar, Flint Glass w/cap, 1.2 oz. (35ml)
- 15- KCP217 Cotton Balls
- 1- MBT288C Black molded copolymer carrying case, textured w/folding handle, includes custom molded inserts; Dimensions: 12.6875" x 8.9375" x 4.75" (32.3cm x 22.7cm x 12.1cm); Weight: 3.2 lbs. (1.2kg)

## BT001 CONTENTS:

- 1- 131LT4 Hinge Lifter, Transparent, 4" x 4" (10.2cm x 10.2cm), 12
- 6- 288DP Pipettes, Disposable, w/capillary and 3ml Bulb
- 6- BPD1 Blood Print Powder, 1g
- 2- BPD21 Blood Print Reagent, 1 oz. (30ml)
- 6- BPD3 Blood Print Solutions, 1 oz. (30ml)
- 6- BPD4 Blood Print Activators
- 2- BPD51 Blood Print Lifter Solution, 1 oz. (30ml)
- 2- BPD61 Blood Print Lifter Valve Cleaner No. 6, 1 oz. (30ml)
- 1- BPD7 Blood Print Solution Valve Cleaner No. 7, 1 oz. (30ml)
- 2- SB4 Spray Bottle, 4 oz. (118ml)
- 1- BT0011 Carrying Case; Dimensions: 14.375" x 8" x 7" (36.5cm x 20.3cm x 17.8cm); Weight: 4 lbs. (1.8kg)

## Blood Search, ID & Enhancement

### FEATURES:

- Easy to use
- Each bottle includes 50 tests
- Has a shelf-life of roughly a year from the date of manufacture



Each container of Hemastix® features a color chart for identification for the presumptive presence of blood.

### EACH INDIVIDUAL RSID™ BLOOD TEST INCLUDES:

- 1- Test kit (reagent, pipette, swab, test cassette)
- 1- Zip-Top bag
- 1- Sterile water, 3ml
- 1- Documentation envelope



Results of the Blood Detection Field Tests are fleeting and should be photographed immediately for documentation purposes.

## Presumptive Blood Identification Products

### HEMASTIX® BLOOD ID REAGENT STRIPS

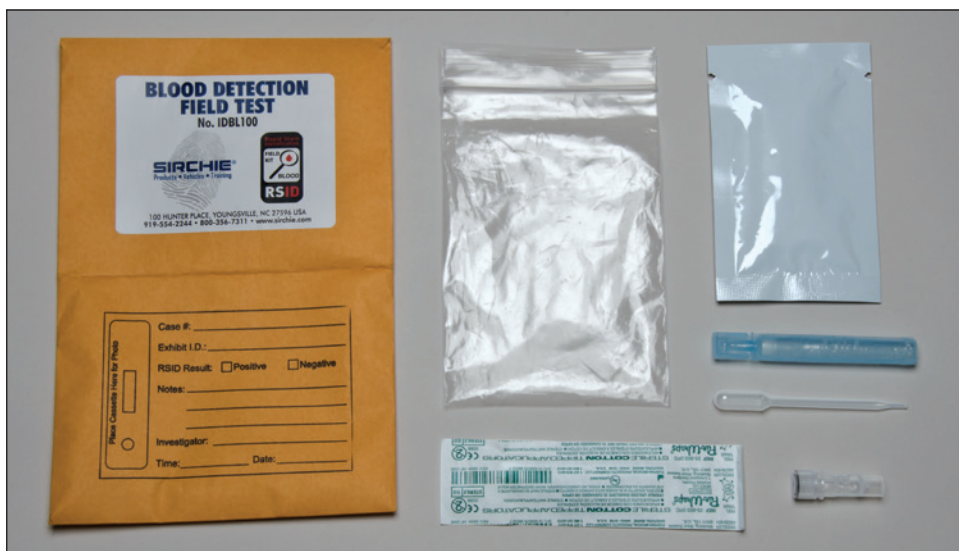
Hemastix® are 3" plastic strips with a special blood reagent material at the tip. The strips detect the peroxide-like activity of hemoglobin in a substance. Simply rub the Hemastix on a moistened stain or across a swab that has a suspected dried blood sample on it. The reagent coated tip will turn a shade of green if hemoglobin is detected. Compare the color reaction to the chart on the side of the bottle to determine the level of hemoglobin in the sample. If the reaction is positive, take a photograph of the strip by the substance to document the reaction and retain the strip as presumptive evidence.



CATALOG NO.	DESCRIPTION	PRICE
HEM50	Hemastix® Blood ID Reagent Strips, 50 strips	

### RSID™ BLOOD DETECTION FIELD TEST KIT

This presumptive test for blood is great to use in the field as a test for human blood. The test is specific for human Glycophorin A Antigen and no cross reaction has been observed with human saliva, semen, urine, breast milk, or amniotic fluid. Strip test results are complete in 10 minutes. Each kit includes 10 test units and protocol.



CATALOG NO.	DESCRIPTION	PRICE
IDBL100	RSID™ Blood Detection Field Test Kit, 10 tests/box	



## Blood Evidence Enhancement

### AQUEOUS LEUCO CRYSTAL VIOLET

Aqueous Leuco Crystal Violet is a highly sensitive, presumptive test for the presence of blood. This compound is ideal for developing visible, and invisible blood traces, fingerprints and footprints on virtually any surface. This kit contains the materials needed to prepare a 500ml working solution.



CATALOG NO.	DESCRIPTION	PRICE
LV509	Aqueous Leuco Crystal Violet Kit	

### AMIDO BLACK

Enhances latent prints contaminated with blood on porous and non-porous surfaces with a blue-black stain, but will not develop a normal perspiration-based print. Gather physiological samples and conduct all fingerprint development methods prior to use. Sensitive to proteins found in blood and some other body fluids.



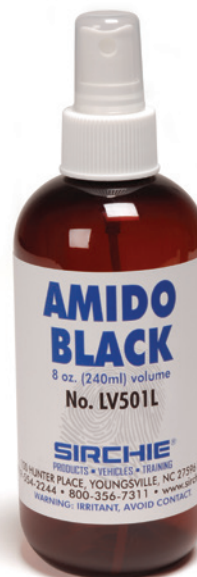
CATALOG NO.	DESCRIPTION	PRICE
LV501	Amido Black, 25g	
LV5011	Amido Black, 100g	

### AMIDO BLACK SPRAY

Amido Black (Naphthol Blue-Black) is a dye that is highly sensitive to the protein compounds found in blood. Previously only offered in powder form, this new solution simplifies the use of this reagent at crime scenes and is the perfect choice when attempting to recover weak or practically invisible bloodstain shoeprints or latent fingerprint impressions. Amido Black may be used on porous and non-porous surfaces.

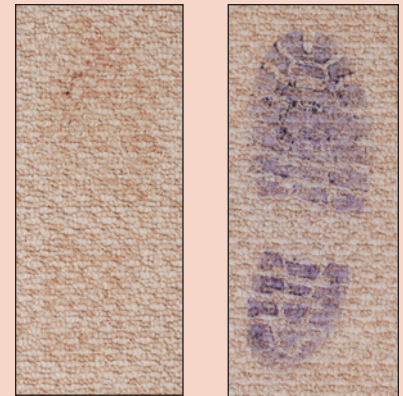
The reaction product is a strong blue/black color, and it is best suited for use on light-colored surfaces permitting good visual contrast.

Amido Black Solution is now supplied in a pump spray eliminating any advance preparation prior to use at the crime scene. When stored at room temperatures, the solution offers a shelf-life of up to one year. Amido Black is non-flammable, and will stain many surfaces.



CATALOG NO.	DESCRIPTION	PRICE
LV501L	Amido Black Spray, 8 oz. (236 ml) Bottle	

## Blood Search, ID & Enhancement



Carpet with suspected blood print (left) and after treatment with Aqueous Leuco Crystal Violet (right).



Shoeprint in blood on dark wood enhanced with Amido Black

*Amido Black Spray is not a presumptive test for the presence of blood. Phenolphthalein and Leuco-Malachite are the preferred methods for presumptive blood identification.*

*Use of Amido Black should only be employed after physiological samples have been collected, since it will interfere with blood analysis and DNA typing.*



**SHOP  
ONLINE**  
[www.sirchie.com](http://www.sirchie.com)



Shoeprint in blood on formica stained with Coomassie Blue



Partial palm print in blood on drywall stained with Hungarian Red



Shoeprint treated with Acid Yellow 7, shot in a darkened room, lit with a 455nm light source and shot through an orange filter. (f 13 at 20 seconds, ISO 500 utilizing a tripod-mounted digital SLR)

**SHOP  
ONLINE**  
www.sirchie.com

## Blood Evidence Enhancement

### COOMASSIE BLUE

Enhances latent prints contaminated with blood on porous and non-porous surfaces, but will not develop a normal perspiration-based print. Application can be repeated until maximum contrast is achieved. Gather physiological samples and conduct all fingerprint development methods prior to use. Sensitive to proteins found in blood.



CATALOG NO.	DESCRIPTION	PRICE
LV512	Coomassie Blue, 25g	

### HUNGARIAN RED

This is an aqueous solution for staining impressions found in blood. Much safer than other staining compounds due to its water-based formula. Lifted traces and weak traces on dark or confusing backgrounds fluoresce under a strong green alternate light source (520-560nm). Use on porous and non-porous surfaces.



CATALOG NO.	DESCRIPTION	PRICE
LV503	Hungarian Red, 4 oz. (100 ml)	
LV5031	Hungarian Red, 16 oz. (500 ml)	

### ACID YELLOW 7 BLOODSTAIN ENHANCEMENT REAGENT SOLUTION

Acid Yellow 7 is a protein-reacting reagent used for latent fingerprints and footprints made in blood. Prints or patterns in blood are stained with the solution, which is then visible under 455nm light and an orange filter. It is best used to eliminate dark or patterned backgrounds where other enhancement stains are not practical. It works very well on non-porous surfaces like linoleum, glass, tiles, painted surfaces, or PVC floor covering.



CATALOG NO.	DESCRIPTION	PRICE
LV517L	Acid Yellow 7 Solution, 8 oz. (236 ml) Bottle	

### BLOOD FIXATIVE

Before enhancing blood prints using Amido Black or other common stains, the blood should be dry, and the blood should be fixed. The fixation of blood is done to prevent disruption or running of the blood during enhancement. Solution of 5-sulfosalicylic acid.



CATALOG NO.	DESCRIPTION	PRICE
LV513	Blood Fixative, 8 oz. (236 ml) Bottle	



## Blood Evidence Documentation

## BLOOD SPATTER KIT

There are several tools that can be used for blood spatter analysis. **SIRCHIE**®'s Blood Spatter Kit contains several of these components. The convenient carrying case stores and easily dispenses four brightly colored twines: green, pink, orange, and yellow. Each roll is 18 gauge twisted nylon twine and 275 ft. (84m) long. Take the twine out of its holding slot and pull out the desired length. Insert the twine back into the holding slot and cut. Twine can be attached to any surface using wax clips. Wax clips are removable and reusable.



CATALOG NO.	DESCRIPTION	PRICE
BSK500	Blood Spatter Kit	
KCP261	Green Twisted Nylon Twine, 275 ft. (84m)	
KCP262	Pink Twisted Nylon Twine, 275 ft. (84m)	
KCP263	Orange Twisted Nylon Twine, 275 ft. (84m)	
KCP264	Yellow Twisted Nylon Twine, 275 ft. (84m)	
KCP265	Wax Clips, 10 each	
LTF113	Optional Reflective Yarn, 275 ft. (84 m)	

## BLOOD SPATTER DOCUMENTATION KIT

This versatile blood spatter documentation kit was originally developed as a support for our Bloodstain Pattern Documentation 4 day training course. The kit is ideal for investigators in the field who need a comprehensive adaptable measuring kit to assist in documenting blood spatter on site.

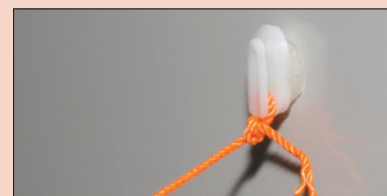


CATALOG NO.	DESCRIPTION	PRICE
BSDOCK100	Blood Spatter Documentation Kit	

## Blood Search, ID & Enhancement



*No. LTF113 Reflective Yarn*



*Wax clips enable the twine to be attached to any surface and are removable and reusable.*

## BSK500 CONTENTS:

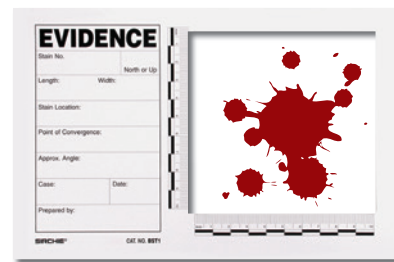
- 1- BST1 Blood Stain/Evidence Template, 15 pk.
- 1- KCP110 Scissors, 5" (12.7cm)
- 1- KCP261 Green Twisted Nylon Twine, 18 gauge x 275 ft. (84m)
- 1- KCP262 Pink Twisted Nylon Twine, 18 gauge x 275 ft. (84m)
- 1- KCP263 Orange Twisted Nylon Twine, 18 gauge x 275 ft. (84m)
- 1- KCP264 Yellow Twisted Nylon Twine 18 gauge x 275 ft. (84m)
- 1- KCP265 Wax Clips, 10 ea.
- 1- BSK500C Black Molded Carrying Case; Dimensions: 14" x 10.25" x 3.5" (35.6cm x 26cm x 8.9cm); Weight: 3 lbs. (1.5kg)

## BSDOCK100 CONTENTS:

- 1- Protractor
- 1- Plumb Bob, Chrome Plated, 8 oz.
- 1- KCP114 Retractable Steel Tape Measure, 3pk
- 1- SK800 Tape Measure 50 ft. (15 m)
- 1- PPS201 Photograph Numbers, 0-4cm scale/10
- 1- PPS202 Photograph #'s 0-2cm scale/10
- 2- PPS800 Forensic Scale (metric), 105mmx105mm
- 2- PPS801 Forensic Scale(english), 4x4
- 1- PPS400 Photographic Rulers, wht.w/blk
- 1- PPS403 Photographic Rulers, blk w/ wht
- 2- 601E Evidence Rule Tape
- 1- EPS30B Photo Evidence Ruler, 10 ea.
- 1- EPS30W Photo Evidence Ruler, 10 ea.
- 1- EPS20B Photo Evidence Rule, 100 ea.
- 1- EPS20W Photo Evidence Rule, 100 ea.
- 1- PPS500 Photo Evidence Scales, White on black, 50 ea.
- 1- PPS502 Adhesive Photo Evidence Scales, Black on white, 50 ea.
- 1- PPS700 Big Numeral Reference Scale, 12", 5 ea.
- 1- BSDOCK100C Carrying Case High-impact copolymer carrying case w/handle; Dimensions: 18" x 13" x 9" (45.7cm x 33cm x 22.9cm); Weight: 8.8 lbs. (4kg)

## BLOODSTAIN/EVIDENCE TEMPLATES

When it isn't possible or practical to analyze blood stains at the crime scene, this handy template permits you to record the evidence in a format acceptable in most jurisdictions. The template is printed on pressure-sensitive, removable adhesive stock that will hold fast to walls, floors and ceilings. Each template is die-cut and features a pre-printed scale and information blanks. One model documents blood spatters, bullet holes, tool marks and many other kinds of physical evidence (10cm x 10cm).



No. BST1



No. BST2

CATALOG NO.	DESCRIPTION	PRICE
BST1	Blood Stain/Evidence Template, Pack of 15	
BST2	Blood Stain/Evidence Template, Open Scale, Pack of 15	

## SPATTER BLOOD

For the purposes of teaching blood spatter pattern documentation and analysis without the hazards of human or animal blood, spatter blood was developed to have the same physical characteristics as human blood, such as viscosity, surface tension and color. Utilize this blood when creating spatter patterns for mock crime scenes or detailed teaching tools for documentation or analysis.



CATALOG NO.	DESCRIPTION	PRICE
SPAB8	Spatter Blood, 8 oz. (236 ml) Bottle	

## SYNTHETIC BLOOD

When conducting experiments using blood search (luminol) or blood confirmation testing (Kastle-Meyer), synthetic blood can be used as a clean non-hazardous alternative to actual human or animal blood. Formulated with ingredients to mimic human blood, its reactions are similar to actual blood and therefore yield authentic results.



CATALOG NO.	DESCRIPTION	PRICE
SYNB8	Synthetic Blood, 8 oz. (236 ml) Bottle	