



# Arson Investigation Tools and Kits

Fire fighters, fire investigators, and arson investigators are faced with some of the toughest scenes to investigate and analyze. Potential evidence can often be difficult to find and damaged in scenes that might not be safe. With feedback from arson investigators, we've developed many tools to help you find, collect, and preserve evidence in complex dark scenes.



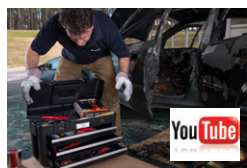
## Online Training

We provide free online training on a variety of subjects of interest to law enforcement & crime scene investigators.

### Lunch-n-Learn:

*Understanding Fire & Arson Investigation Tools*

<https://youtu.be/phWkQEs-8O8>



### Webinar:

*Fire and Arson Investigations Basics*

<https://youtu.be/hdjlG9flffl>



## Fire Line Barrier Tape

Secure the scene with this attention-getting barrier tape. Buy single rolls with dispenser box or a bulk pack of 8 rolls without dispenser boxes.

**No. BT400** Fire Line Barrier Tape w/disp box, 1 roll

**No. BT400BP** Fire Line Barrier Tape, 8 rolls



Arson scenes are naturally dark scenes, making it difficult to locate potential evidence. Light up your scene with one of our scene lights to make your job easier and get all the information you can.

**The Nomad 360 Light** gives you some flexibility in scene lighting: it converts from an area light to a spotlight to a 360° scene light in seconds. It's portable, waterproof, and features a self-contained design so you can use it or mount it anywhere you need it. See details on page 29.

The Nomad 360  
Scene Light  
No. NMD900



For more information:  
Please visit [www.sirchie.com](http://www.sirchie.com) or  
call us at (800) 356-7311.

## Arson Evidence Collection

### Arson Electrical Tool Kit

Created with input from fire investigators, this kit is perfect for investigating possible electrical causes of fire. Also, you'll have what you need to test and render safe electrical systems at fire scenes.



No. AET10

Arson Electrical Tool Kit

### Grid Marking Kit

Make your investigation more efficient by conducting a thorough and comprehensive exam of fire and arson scenes. With this kit you can grid off the area and conduct a space by space examination. It will help you in the practice of accurate documentation of evidence and items of interest during your investigation.



No. GMK10

Grid Marking Kit

### Arson Scene Tool Kit

Packaged in a rugged polypro plastic case, this complete tool kit has the tools for you to find evidence in some of the most difficult scenes.



No. AEC400

Arson Scene Tool Kit

### Arson Tool Cleaning Kit

Designed with input from fire investigation experts to help you easily and efficiently clean tools and prevent cross-contamination as you move through different areas of an arson scene.



No. ATC100

Arson Tool Cleaning Kit

For more information:  
Please visit [www.sirchie.com](http://www.sirchie.com)  
or call us at (800) 356-7311.





**Pricing information:**  
For current pricing visit  
[www.sirchie.com](http://www.sirchie.com), or  
call (800) 356-7311



## Solid Material Evidence Collection Containers

To preserve solid forms of physical evidence, these container lids have an airtight seal when put in place. This prevents possible accelerants from evaporating when in transport to the lab.



Available with and without rubber septums and labels.

<b>No. AEC00</b>	<b>1 pint w/rubber septum &amp; labels, 10 ea.</b>
<b>No. AECPT</b>	<b>1 pint, 10 ea.</b>
<b>No. AECPTL</b>	<b>1 pint w/polymer lining, 10 ea.</b>
<b>No. AEC01</b>	<b>1 quart w/rubber septum &amp; labels, 10 ea.</b>
<b>No. AECQT</b>	<b>1 quart, 10 ea.</b>
<b>No. AECQTL</b>	<b>1 quart w/polymer lining, 10 ea.</b>
<b>No. AEC02</b>	<b>1 gallon w/rubber septum &amp; labels, 10 ea.</b>
<b>No. AECGAL</b>	<b>1 gallon, 10 ea.</b>
<b>No. AECGALL</b>	<b>1 gallon w/polymer lining, 10 ea.</b>

## Arson Investigation Solid Sampler Kit

This kit contains the right tools you need to remove evidence from the arson scene, including plaster, soot excelsior, wood chips, and soil samples with the containers for contaminant-free delivery to the lab.



<b>No. AEC300</b>	<b>Solid Sampler Kit</b>
<b>No. AEC300L</b>	<b>Solid Sampler Kit w/polymer lined cans</b>

## Arson Investigation Liquid Sampler Kit

This kit allows you to extract large and small liquid samples using the included hand pump to collect liquids from up to 10 feet away, syringes to collect samples from cracks and crevices, and petroleum strips and pH litmus strips.



No. AEC210 Replacement Hand Pump

<b>No. AEC200</b>	<b>Liquid Sampler Kit</b>
<b>No. AEC210</b>	<b>Replacement Liquid Sampler Hand Pump</b>

## Combustible Gas Detector

Protect yourself and your team with this general purpose combustible hydrocarbons detector. Lightweight and portable, it will quickly locate minute concentrations of combustible hydrocarbons and the presence of hazardous vapors. To guarantee proper operation and maintain ISO traceability, the sensor must be replaced every two years.



### Detectable Compounds:

Acetylene, Methyl Chloride, Iso-Butane, Hydro Sulfide, Methane, Acetone, Ethane, Methanol, Propane, Ammonia, Ethylene, Gasoline, Hydrogen, Chlorine, Methyl Ether, Vinyl Chloride.

<b>No. CGD8800X</b>	<b>Combustible Gas Detector, 110V</b>
<b>No. CGD8800X220</b>	<b>Combustible Gas Detector, 220V</b>



**Often Bought Together:**  
Indicates items often  
purchased in conjunction with  
other items.

## Kapak Fire Debris Tubular Rollstock

This rollstock is made of nylon and is hydrocarbon free. Since it can be cut to any length, it's ideal to collect and seal evidence of varying sizes to be sent to the laboratory.



No. AET18

Fire Debris Tubular Rollstock, 18" x 125ft

## Arson Evidence Collection Bags

Made from tough, durable nylon, these bags eliminate the potential for cross-contamination from propellant fumes.



For more Evidence  
Collection bags, envelopes,  
pouches & containers see  
the Evidence Packaging  
Section



No. AEC510C

Arson Evidence Collection Bag, 5" x 10", 100 ea.

No. AEC1218C

Arson Evidence Collection Bag, 12" x 18", 100 ea.

No. AEC2030L

Arson Evidence Collection Bag, 20" x 30", 50 ea.

## Char Depth Gauge

A useful aid to any arson investigation kit, this gauge can help indicate how long the substance burned, how intense the fire was, and can help indicate the possibility of accelerants.



No. CG1000

Char Depth Gauge

## Debris Sifting Screens

Save time and sift through large volumes of potential evidence while eliminating unimportant debris with these sifting screens. Opening sizes from 1/8" up to 1/4".

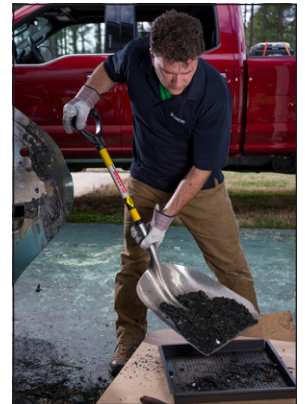


No. DBS3

Debris Sifting Screens

## Debris Sifting Shovel

This modified shovel features sorting holes that let you sift through evidence, even in areas that have been completely burned.



No. DSS21

Debris Sifting Shovel

## RevealFirePRO

Highly durable and easy to use, Reveal FirePRO combines a high-performance 320 x 240 thermal sensor with intuitive software to help you fight fires smarter and safer.

### Features include:

- 320 x 240 High-Resolution Thermal Sensor
- Waterproof Design
- Wide, 32-Degree Field of View
- Long-Lasting Rechargeable Battery
- 3 Modes. Purpose-Built for First Responders



No. STFIRE01

RevealFirePRO