



Blood Search, Identification and Enhancement

With DNA technology, forensic scientists can characterize biological evidence by our DNA, pinpointing with more accuracy who was at a crime scene or near a victim. This ability greatly enhances the significance this type of evidence plays in a criminal investigation and the importance for the crime scene investigator to:

Search	Identify	Enhance	Document
<ul style="list-style-type: none">• Luminol• BLUESTAR• Lumiscene	<ul style="list-style-type: none">• Phenolphthalein• Leuco-Malachite• Hemastix®• Hexagon Obti• RSID Test Kits	<ul style="list-style-type: none">• Acid Yellow• Amido Black• Coomassie Blue• Hungarian Red• Leuco Crystal Violet	<ul style="list-style-type: none">• Recognizing and documenting bloodstain pattern evidence• Blood Spatter Kit• Blood Spatter Documentation Kit• Bloodstain Evidence Template

Bloodstain Pattern Documentation Course

This class introduces the student to the nature and value of bloodstain pattern evidence, teaching how to recognize basic pattern types, and demonstrates through practical exercise the roadmapping method of documenting bloodstain pattern evidence.

No. BPA100

For class schedule or to register, visit www.sirchie.com/training.



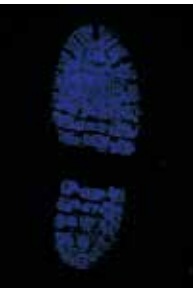
Often Bought Together:
Indicates items often purchased in conjunction with other items.

Presumptive Blood Search

Luminol Blood Reagent

The advantages of using Luminol to find minute traces of blood are numerous:

- Non-destructive to subsequent DNA profiling
- Relatively safe compound if used according to directions
- Sensitive to dilutions as high as 100,000:1
- Ideal reagent for “aged” or invisible blood stains. In fact, the older the stain, the brighter the reaction.



It's easier and faster to find the presence of blood with Luminol, especially if an area has been cleaned up. Luminol is a chemiluminescent substance that uses the peroxidase-like activity of the heme portion of hemoglobin. It produces a bluish-white glow that can only be seen and photographed in near total darkness.

Luminol Invisible Blood Reagent with Spray Head

Our luminol reagents come with pump spray bottles for application on suspected areas. Solutions are available in three sizes: simply mix and apply. Also available in powder form.



No. LUMINOL4	Luminol Reagent, 4 oz. bottle, 2 ea.
No. LUMINOL8	Luminol Reagent, 8 oz. bottle, 2 ea.
No. LUMINOL16	Luminol Reagent, 16 oz. bottle, 1 ea.
No. LUMINOL4A8	Luminol Powder (makes 8 ea., 4 oz. solutions)

LumaVision Luminol Companion Illuminator Kits

To search for trace evidence, there should be no light in the area. LumaVision uses red light, which lets you easily see the process of luminol application in the dark. Our basic kit includes a LumaVision light with head mount, batteries, and a carrying case. Our master kit adds two 8 oz. bottles of Luminol.



- LVL1000 Contents:**
- 1- LVL100 LumaVision™ Light with 3 ea. AA batteries
 - 2- Luminol8A Chemical Packets, 12.5 gm each
 - 2- Luminol8B Mixing Solution, 8 oz. each
 - 2- Detachable Pump Sprayers
 - 1- Headband
 - 1- Belt Clip
 - 1- Molded Carrying Case with Custom Foam Insert, 12.25" x 9" x 3.875"
- No. LVL1000 **LumaVision Master Kit**



- LVL2000 Contents:**
- 1- LVL100 LumaVision™ Light with 3 ea. AA batteries
 - 1- Headband
 - 1- Belt Clip
 - 1- Molded Carrying Case with Custom Foam Insert, 8.5" x 5.5" x 3.1875"
- No. LVL2000 **LumaVision Basic Kit**

Pricing Information:
For current pricing visit
www.sirchie.com, or
call 800.356.7311

Often Bought Together:
Indicates items often
purchased in conjunction
with other items.

Bluestar® Forensic Kit

Bluestar is similar to Luminol but it doesn't require total darkness to see the luminescence. It's extremely sensitive to the detection of bloodstains even if traces have been washed off with detergent. Additionally, Bluestar doesn't alter the DNA in suspect bloodstains so DNA and ABO typing can be tested later in laboratories.

FRA00001 includes:

- 1- Hermetically-sealed Bottle with 500ml (16 oz) Reagent
- 3- Catalyst Tablets
- 1- Fine Mist Atomizer

No. FRA00001 Bluestar Forensic Kit

Bluestar® Forensic Mini Kit

Use this mini kit when searching a limited area or small objects to quickly identify blood presence. It's easily ready and more economical for a quick search.



FRA00002 includes:

- 2- Bottles with 4 oz. (125ml) distilled water and fine mist atomizer
- 2- Pairs of BLUESTAR Forensic Tablets

No. FRA00002 Bluestar Forensic Mini Kit

Bluestar® Forensic Tablets

Easy to prepare and to carry around, these tablets let investigators create 4 oz. of solution for testing. Available in 4 to 8 application packages.



No. FRA00003 Bluestar Forensic Tablets, 4 applications

No. FRA00004 Bluestar Forensic Tablets, 8 applications

Bluestar® Forensic Magnum

The Forensic Magnum is three times more powerful than Bluestar tablets. You will need this when searching for minute blood particles; it will detect even microscopic droplets on an aggressor's clothing or garments and objects that have been washed.

The Forensic Magnum is particularly suited for forensic lab technicians who need an extremely efficient chemical for detailed examination of items such as clothing or weapons. It's also effective in a variety of situations in a laboratory or at a crime scene that involves a limited search area or smooth vertical surfaces, using a fine mist atomizer.

FRA00005 includes:

- 1- Bottle containing 4 Oz (125ml) of chemiluminescent solution
- 1- Foil packet containing 3 tablets of oxidizer

No. FRA00005 Bluestar Forensic Magnum

Bluestar® Identi-HEM®

BLUESTAR® Identi-HEM is a rapid, qualitative test for the specific detection of **human** hemoglobin, and is primarily intended for forensic technicians who have found bloodstains at the crime scene.

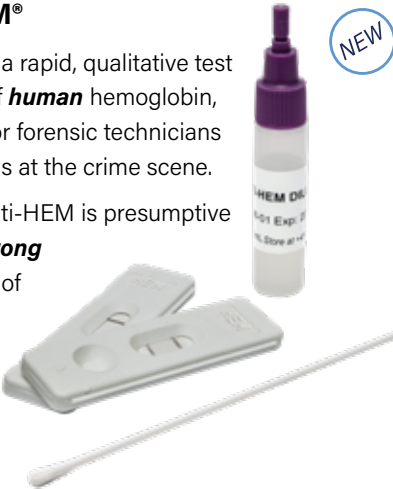
A positive result using Identi-HEM is presumptive in nature, indicating the **strong likelihood** of the presence of human blood, but must be confirmed by an analytical laboratory. *Complete instructions are included.*

Each test includes:

- 1- Bluestar® Identi-HEM® Device
- 1- Extraction Buffer, 2ml bottle
- 1- Sterile Swab

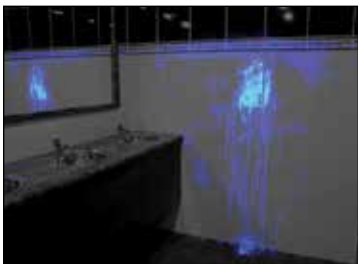
No. FRA00008 Bluestar Identi-HEM, 6 tests

No. FRA00009 Bluestar Identi-HEM, 24 tests



Lumiscene Advanced Latent Blood Search Solution

Lumiscene is a great choice to help find evidence and protect DNA integrity. Lumiscene gives good results and contains the lowest percentage of peroxide chemistry available. This protects DNA from degradation during processing. Lumiscene is simple to use: add two Activator Tablets to the lumiscene stock solution, mix and it's ready for use—no measuring necessary. Supplied in a 500ml plastic bottle with Spray Head.



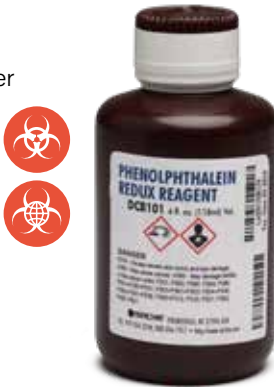
No. LSCENE01 Lumiscene Solution, 500 ml

Presumptive Blood Identification Products

Phenolphthalein Reagent

The key component of the Kastle Mayer reagent test, this premixed solution can be used in combination with ethanol and hydrogen peroxide in the laboratory as a confirmatory blood test. The solution requires no additional preparation.

No. DCB101 Phenolphthalein Reagent, 4 oz. bottle



Blood ID Kastle Meyer Phenolphthalein Test

The Kastle-Meyer method uses phenolphthalein to presumptively test for the presence of hemoglobin. Sirchie now offers this field test in an easy-to-use, rugged pouch format. This pouch format is only available from Sirchie. We carefully designed our test in this format to ensure that you conduct every presumptive blood test using best practices according to the forensics community. Our test requires that you bring the sample that you want to test to the presumptive blood test pouch rather than applying the test directly to the suspect stain. The kit is shipped complete, including all of the items necessary to conduct 10 tests: distilled water, filter paper, and 10 test pouches.

No. PBID100 Blood ID Kastle Meyer Phenolphthalein Kit



Blood ID Leuco-Malachite Reagent Kit

This Blood Identification Kit utilizes Leuco-Malachite (McPhail's Reagent) to provide a field test for the presumptive identification of blood. Each test consists of two chemical reagent ampoules contained in a rugged disposable pouch. A blue/green color reaction indicates the presumptive presence of blood (a positive reaction can occur in as little as one part per million). Includes 10 tests, filter paper and distilled water. Use our Hexagon Obti test to presumptively identify **human** blood.

No. PBID200 Blood ID Leuco-Malachite Reagent Kit



Pricing Information:
For current pricing visit
www.sirchie.com, or
call 800.356.7311

Often Bought Together:
Indicates items often
purchased in conjunction
with other items.

Master Presumptive Blood ID Kit



This kit is designed for finding and presumptively identifying blood at the crime scene. Luminol is provided to find even trace amounts of blood, and Kastle-Meyer and Leuco-Malachite tests are included for presumptive identification.

PBID400 Contents:

- 1- PBID100 Blood ID Kastle-Meyer Kit, 10 tests
- 1- PBID200 Blood ID Leuco-Malachite Kit, 10 tests
- 1- LUMINOL4 Luminol Reagent, 4 oz. bottle, 2 each
- 1- Corrugated cardboard box, 9" x 4" x 4" (22.9cm x 10.2cm x 10.2cm)

No. PBID400 Master Presumptive Blood ID Kit

Hemastix® Blood ID Reagent Strips

These easy-to-use strips detect the peroxide-like activity of hemoglobin in a substance. They have a special blood reagent material at the tip. Once rubbed across a moistened stain or swab, the reagent tip will change color. A chart will tell you the level of hemoglobin in the sample.

Take a photograph of the strip by the substance to document the reaction and retain the strip as presumptive evidence.

No. HEM50 Hemastix Blood ID Reagent Strips, 50 ea.

Master Field and Lab Blood Test Kit

You'll be fully equipped for presumptive testing for blood with this kit. It contains all the essential components for testing in the lab or in the field. The reagents included are in pre-measured quantities for optimal concentration and sensitivity.



MBT288 Contents:

- | | |
|--|--|
| 18- 288DP Pipettes, Disposable with Capillary and 3ml Bulb | 6- 288PX2 PX2 Reagent Ampoules, Phenolphthalein, 2ml |
| 2- 288FP Contact Filter Papers, 1" x 2" | 2- DISW2 Bottles of Distilled Water, 2 oz. |
| 6- 288L1 Luminol Ampoule Reagents, 1ml | 2- KCP122 Blood Collection Tubes with EDTA, 7ml |
| 6- 288L2 Luminol Ampoule Reagents, 2ml | 1- KCP213 Jar, Flint Glass with Cap, 1.2 oz. |
| 6- 288LM1 Leucomalachite Ampoule Reagents, 1ml | 15- KCP217 Cotton Balls |
| 6- 288LM2 Leucomalachite Ampoule Reagents, 2ml | 1- MBT288C Black, Molded Copolymer Carrying Case with Folding Handle and Custom Insert, 12.7" x 9" x 4.75" |
| 6- 288PX1 PX1 Reagent Ampoules, Phenolphthalein, 1ml | |

No. MBT288 Master Field and Lab Blood Test Kit

Latent Blood Detection Kit for Detection of Blood Prints

In the most violent crimes, blood prints can be found on the weapon, floor, furniture, and victim. In many instances, blood prints are not visible because of background color or the weakness of the blood print. To make these prints visible, this kit has a sensitive method for detecting and developing blood prints on surfaces. Latent blood prints developed through these reagents are very clear and chemically stable.



BT001 Contents:

- 1- 131LT4 Transparent Hinge Lifters, 4" x 4", set of 12
- 6- 288DP Pipettes, Disposable, with Capillary and 3ml Bulb
- 6- BPD1 Blood Print Powder, 1gr
- 2- BPD21 Blood Print Reagent, 1 oz. (30ml)
- 6- BPD3 Blood Print Solutions, 1 oz. (30ml)
- 6- BPD4 Blood Print Activators, 1ml
- 2- BPD51 Blood Print Lifter Solution, 1 oz. (30ml)
- 2- BPD61 Blood Print Lifter Valve Cleaner No. 6, 1 oz. (30ml)
- 1- BPD7 Blood Print Solution Valve Cleaner No. 7, 1 oz. (30ml)
- 2- SB4 Spray Bottles, 4 oz. (120ml)
- 1- BT0011 Carrying Case, 14.375" x 8" x 7" (36.5cm x 20.3cm x 17.8cm)

No. BT001 Latent Blood Detection Kit

RSID Blood Detection Field Test Kit

Investigators should conduct this presumptive test in the field as a test of human blood. It's specific for the human Glycophorin A Antigen and no cross-reaction has been observed with human saliva, semen, urine, breast milk, or amniotic fluid. Tests are completed in 10 minutes but the result is fleeting. Photograph results as soon as possible. Each kit includes 10 test units and protocol.



No. IDBL100 RSID Blood Detection Field Test Kit, 10 tests

Blood Evidence Enhancement

Aqueous Leuco Crystal Violet

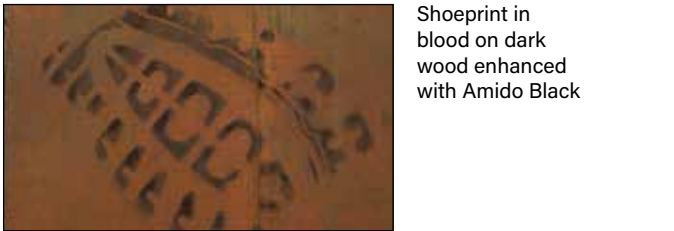
Aqueous Leuco Crystal Violet is a highly sensitive, presumptive test for the presence of blood and a blood enhancer for photography. This process is ideal for enhancing visible and invisible traces of blood on both porous and non-porous surfaces. The LV509 kit contains the materials needed to prepare a 500 ml working solution.



No. LV509 Aqueous Leuco Crystal Violet

Amido Black

Amido Black is used to enhance blood with a blue-black stain to create contrast and detail for photographic documentation. Sensitive to proteins found in blood, Amido Black will not develop a normal perspiration-based print. **Must be mixed into a solution before use.**



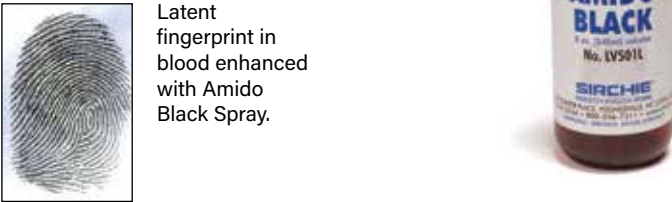
Amido Black should only be used after you collect physiological samples because it will interfere with blood analysis and DNA typing.

No. LV501 Amido Black, 25 gram

No. LV5011 Amido Black, 100 gram

Amido Black Spray

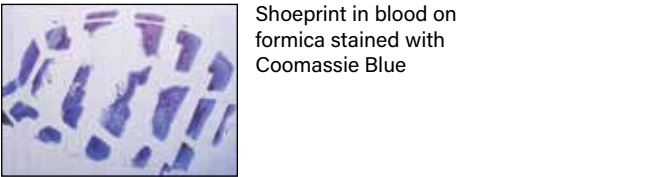
This Amido Black solution comes premixed in a ready-to-use, convenient 8 oz. pump spray. Perfect for use at the crime scene to enhance weak or nearly invisible bloodstain impressions.



No. LV501L Amido Black Spray, 8 oz. Pump

Coomassie Blue

Like Amido Black, Coomassie Blue is sensitive to proteins found in blood, and is used for enhancing contrast and detail for photographic documentation. Coomassie Blue can be applied until maximum contrast is achieved. **Must be mixed into a solution before use.**



Should only be used after you collect physiological samples because it will interfere with blood analysis and DNA typing.

No. LV512 Coomassie Blue, 25 gram

Hungarian Red Spray

This water-based solution will simply enhance blood impressions under normal light, and fluoresce orange under a green (520-560nm) alternate light source.



No. LV503 Hungarian Red Spray, 4 oz.

No. LV5031 Hungarian Red Spray, 16 oz.

Pricing Information:
For current pricing visit
www.sirchie.com, or
call 800.356.7311

Often Bought Together:
Indicates items often
purchased in conjunction
with other items.

Acid Yellow 7 Bloodstain Enhancement Reagent Spray

Acid Yellow 7 reacts with proteins found in blood, and is used to stain blood prints found on multi-colored or patterned backgrounds. Simply stain the blood print, and view under longwave uv or blue (400-460nm) light through an orange filter—blood will fluoresce a bright yellow.



Shoeprint treated with Acid Yellow 7, shot in a darkened room, lit with a 455nm blue light source and shot through an orange filter. Photo shot at f/13 for 20 seconds, ISO 500 utilizing a tripod mounted DSLR)

No. LV517L Acid Yellow 7 Spray, 8 oz.

Blood Fixative Spray

Use this Blood Fixative before enhancement to prevent disruption or running of the blood during enhancement.

Blood should be dry and fixed using Blood Fixative Spray before enhancing it with Amido Black or other common stains.

Often Bought Together:
(LV501L) Amido Black Spray

No. LV513 Blood Fixative Spray, 8 oz.

Blood Evidence Documentation

Bloodstain/Evidence Templates

Printed on a pressure-sensitive, removable adhesive stock that will hold fast to walls, floors, and ceilings and has pre-printed scales and information blanks. Use it for blood spatters, bullet holes, tool marks, and many other physical evidence. Available in open or non open scale.



No. BST1 Bloodstain/Evidence Template, 15 ea.

No. BST2 Bloodstain/Evidence Template (open scale), 15 ea.

Spatter Blood

Use this blood when creating spatter patterns for mock crime scenes or as a documentation teaching tool. It has the same characteristics as human blood without the inherent hazards of animal blood.



No. SPAB8 Spatter Blood, 8 oz. Bottle

Synthetic Blood

When conducting experiments involving blood search identification or confirmation, use synthetic blood as a clean non-hazardous alternative to human or animal blood.



No. SYN8 Synthetic Blood, 8 oz. Bottle

Blood Spatter Kit

By using stringing methods, blood patterns can be analyzed for their point of origin. This kit provides the tools necessary to document a bloodstain and determine the point of origin with multiple color braided twine and adhesive clips to apply to most surfaces.



The included wax clips enable the twine to be attached to any surface and are removable and reusable.

Often Bought Together:
(No. LTF113) Optional Reflective Yarn



BSK500 Contents:

- 1- BST1 Blood Stain/Evidence Template, 15 pack
- 1- KCP110 Scissors, 5"
- 1- KCP261 Green Twisted Nylon Twine, 18 gauge x 250'
- 1- KCP262 Pink Twisted Nylon Twine, 18 gauge x 250'
- 1- KCP263 Orange Twisted Nylon Twine, 18 gauge x 250'
- 1- KCP264 Yellow Twisted Nylon Twine, 18 gauge x 250'
- 1- KCP265 StikkiClips, set of 10
- 1- BSK500C Black, Molded Carrying Case, Dimensions: 14" x 10.25" x 3.5" (35.5cm x 26cm x 8.9cm), Weight: 3.3 lbs

No. BSK500	Blood Spatter Kit
No. KCP261	Green Twisted Nylon Twine, 250 ft.
No. KCP262	Pink Twisted Nylon Twine, 250 ft.
No. KCP263	Orange Twisted Nylon Twine, 250 ft.
No. KCP264	Yellow Twisted Nylon Twine, 250 ft.
No. KCP265	Wax Clips, 10 ea.
No. LTF113	Optional Reflective Yarn, 250 ft.

Blood Spatter Documentation Kit

This versatile kit was developed to support our 4-day Bloodstain Pattern Documentation training course. It's ideal for forensic investigators who need to measure and document bloodstain patterns at the crime scene.



BSDOCK100 Contents:

- 1- Protractor
- 1- Plumb Bob, Steel Nickel Plated, 8 oz
- 1- KCP114 Retractable Steel Tape Measure, 6ft (2m), 3pk
- 1- SK800 Tape Measure 50 ft. (15m)
- 1- PPS201 Photograph Numbers, 0-4cm scale/10
- 1- PPS202 Photograph Numbers 0-2cm scale/10
- 2- PPS800 Forensic Scale (metric), 105mm x 105mm
- 2- PPS801 Forensic Scale (english), 4" x 4"
- 1- PPS400 Photographic Rulers, white w/black printing, 10/pk
- 1- PPS403 Photographic Rulers, black w/white printing, 10/pk
- 2- 601E Evidence Rule Tape
- 1- EPS30B Photo Evidence Ruler, 10 ea.
- 1- EPS30W Photo Evidence Ruler, 10 ea.
- 1- EPS20B Photo Evidence Rule, 100 ea.
- 1- EPS20W Photo Evidence Rule, 100 ea.
- 1- PPS500 Photo Evidence Scales, White on black, 50 ea.
- 1- PPS502 Adhesive Photo Evidence Scales, Black on white, 50 ea.
- 1- PPS700 Big Numeral Reference Scale, 12", 5 ea.
- 1- BSDOCK100C Carrying Case High-impact copolymer carrying case w/handle; Dimensions: 18" x 13" x 9" (45.7cm x 33cm x 22.9cm); Weight: 8.8 lbs. (4kg)

No. BSDOCK100 Blood Spatter Documentation Kit