

Crime Scene Documentation and Photography

Crime Scene Documentation/ Photography

Proper documentation of the crime scene starts with the first responder. Law enforcement officers note the condition of the scene upon their arrival and begin to acquire information to aid in the investigation. Securing the scene and marking evidence and items of interest are important steps to preserve the integrity of the investigation. The primary method of documenting crime scenes is through photography along with increased emphasis on video. To properly document evidence using photography, all closeup evidence photos must include a scale. Other methods to help enhance the documentation include sketching of the crime scene and developing information from eye witness accounts.

Sirchie provides a broad range of scales, rulers, sketching templates and equipment, camera kits, and photography supplies to aid the investigator in crime scene documentation. We also supply many options of barrier tapes, evidence marking, and crime scene security including our portable photography barrier and scene guard tent to help preserve the integrity of the scene as it was first encountered. Sirchie also offers comPHOTOfit® + Color III Facial Composite Software for use with eye witnesses or victims of crimes to develop realistic color composites of suspects.



EDUCATION OPPORTUNITY!

We offer a 3-day, onsite course in Crime Scene Photography. Students will learn how to document crime scenes with photography by applying knowledge of photographic concepts as well as legal standards for admissibility in court.



For more information see the Training Section of this catalog or visit our website at www.sirchie.com





Barrier tapes should be used in situations where control of the area is a priority.



Single rolls of Barrier Tape come in a cardboard dispenser box.



Bulk packaged Barrier Tape rolls do not come with dispenser boxes—see next page for dispensers.

BARRIER TAPE

Establish and maintain tight control over crime/emergency scene perimeters quickly and efficiently with our barrier tape. Eye-catching black lettering is printed on brilliant yellow or red polyethylene. The tape is three inches (7.5 cm) wide by 1,000 feet (300 m) long. The warning repeats every 31 inches.

CRIME SCENE DO NOT CROSS

No. BT100

ESCENA DEL CRIMEN NO CRUZAR

No. BT100SP

CRIME SCENE DO NOT CROSS CRIME SCENE DO NOT CROSS ESCENA DEL CRIMEN NO CRUZAR ESCENA DEL CRIMEN NO CRUZAR

No. BT100BL

POLICE LINE DO NOT CROSS

No. BT200

SHERIFF LINE DO NOT CROSS

No. BT300

FIRE LINE DO NOT CROSS

No. BT400

SECURITY LINE DO NOT CROSS

No. BT500



CAUTION BIOHAZARD



No. BT600

NOTE: Bulk packaged rolls are not furnished with dispenser boxes. See the following page for **BTD100 & BTD200 Barrier Tape Dispensers for bulk packaged rolls (8 rolls/pack).**

CATALOG NO.	DESCRIPTION	PRICE
BT100	"Crime Scene Do Not Cross" w/dispenser box, 1 roll	
BT100BP	"Crime Scene Do Not Cross" w/o dispenser boxes, 8 rolls	
BT100SP	"Escena del Crimen No Cruzar" w/dispenser box, 1 roll	
BT100SPBP	"Escena del Crimen No Cruzar" w/o dispenser box, 8 rolls	
BT100BL	English/Spanish "Crime Scene Do Not Cross" w/dispenser box, 1 roll	
BT100BLBP	English/Spanish "Crime Scene Do Not Cross" w/o dispenser box, 8 rolls	
BT200	"Police Line Do Not Cross" w/dispenser box, 1 roll	
BT200BP	"Police Line Do Not Cross" w/o dispenser boxes, 8 rolls	
BT300	"Sheriff Line Do Not Cross" w/dispenser box, 1 roll	
BT300BP	"Sheriff Line Do Not Cross" w/o dispenser boxes, 8 rolls	
BT400	"Fire Line Do Not Cross" w/dispenser box, 1 roll	
BT400BP	"Fire Line Do Not Cross" w/o dispenser boxes, 8 roll	
BT500	"Security Line Do Not Cross" w/dispenser box, 1 roll	
BT500BP	"Security Line Do Not Cross" w/o dispenser boxes, 8 roll	
BT600	"Caution Biohazard" w/dispenser box, 1 roll	
BT600BP	"Caution Biohazard" w/o dispenser boxes, 8 roll	

BARRIER TAPE DISPENSER

Molded plastic dispenser with carrying handle holds one 3" x 1000' roll of barrier tape. Ideal for carrying, protecting and managing a large tape roll. Tape dispenses through a slot that prevents tangling and waste by housing the unused portion and allowing easier unwinding. A protected blade makes tearing the tape neat and easy.



CATALOG NO.	DESCRIPTION	PRICE
BTD100	Barrier Tape Dispenser	

COMPACT BARRIER TAPE DISPENSER

Molded plastic dispenser with carrying handle holds one 3" x 1,000' roll of barrier tape. A serrated edge provided on each side of the dispenser makes tearing the tape neat and easy.



CATALOG NO.	DESCRIPTION	PRICE
BTD200	Compact Barrier Tape Dispenser	

BARRIER POSTS

Control at crime scenes and other emergency situations is essential. However, not every location has fixed objects for securing barrier tape. Barrier Posts solve the problem. They are 4 ft. tall with a 9" stake. Simply push the stake into the ground using the foot stand. Each post has various supports for adjusting the height of the barrier tape.



CATALOG NO.	DESCRIPTION	PRICE
BP5	Barrier Posts, 5 each	

CRIME SCENE FLAGGING TAPE

Mark evidence locations with **SIRCHIE®**'s non-adhesive, unprinted, brightly colored polyester flagging tape. Ideal for cordoning off areas and for the demarcation of dangerous or sensitive areas in outdoor crime scenes, archaeological recovery, entomology, and individual pieces of evidence. Easy to use; just tear off the length you need. These bold colors are easily spotted in crime scene photos.



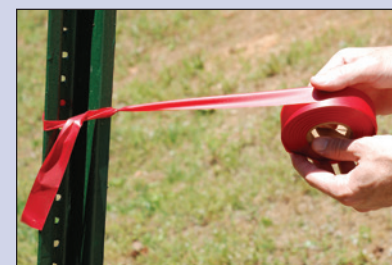
CATALOG NO.	DESCRIPTION	PRICE
FT3B	Crime Scene Flagging Tape, 1" x 300' roll, Blue	
FT3R	Crime Scene Flagging Tape, 1" x 300' roll, Red	
FT3Y	Crime Scene Flagging Tape, 1" x 300' roll, Yellow	



No. BTD200 with Barrier Tape roll loaded.



No. BP5 in use



Crime Scene Flagging Tape can be tied off on any stable, stationary object.



The included carry case allows you to take your Scene Cover Tent anywhere.



The Scene Cover Tent can be set up by two people, and in a number of configurations. Use it with no walls; one, two, three, or a four wall set up with a zippered door.



The Scene Cover Tent features a spacious 10 ft. x 10 ft. interior.



Get close to the scene without disturbing or destroying potential evidence.

CSSP100K SPECIFICATIONS:

- Pad Dimensions: 19.75" x 12" x 2" (50.2cm x 30.5cm x 5.1cm)
- Pad Weight: 2.7 lbs. (1.2kg) ea.

CONFIGURATIONS:

- As A Work Surface: Typ. Coverage (approx.)=16.5 sq. ft. (1.5 sq. meters)
- As A Walkway (approx.): Typ. Length=30 ft. (9.14m)

SCENE GUARD SCENE COVER TENT

Help preserve the integrity of your crime scene and keep crucial evidence protected from weather and other elements with Sirchie's Scene Guard Scene Cover Tent (SCT1010). Sirchie's tent is constructed of incredibly strong composite materials that make it very durable while keeping it lightweight. The composite tent legs and frame are many times stronger than steel, are not susceptible to rust, and highly resistant to dents. This tent is less susceptible to breakage than metal rod framed tents. It is ideal for rugged use at the scene in any type of weather conditions. The tent comes with four detachable walls and is very easy to set up and take down. It comes in a wheeled case for easy transport from your vehicle to the scene and back. Whether you need to keep the sun, rain, wind, or snow out, or keep the scene shielded from public view, the Scene Guard Scene Cover Tent is the perfect solution for any law enforcement organization.

Scene Guard Scene Cover Tent can be used with Scene Guard Photography Barrier (FCCSGD01) and any of Sirchie's photography, camera, and marking/scale kits as a total solution for your crime scene protection, documentation, and evidence marking needs.

Set of 4 fillable weight bags included for anchoring the tent during windy conditions.



CATALOG NO.	DESCRIPTION	PRICE
SCT1010	Scene Guard Scene Cover Tent, 10 ft. x 10 ft., Fiberglass	

CRIME SCENE STEPPING PADS

Avoid disturbing and/or destroying physical evidence while processing the crime scene with Crime Scene Stepping Pads. The CSSP100K Kit includes 10 heavy-gauge (0.090" thick) aluminum alloy stepping pads stacked in a heavy-duty, molded carrying case for instant use. They are ideal for deployment on any flat floor surface whether it's wood, carpet, ceramic, or vinyl tile. An extremely small footprint of 2.5 sq. in. per pad is made with the six points that the stepping pads touch the floor.

The CSSP100K Crime Scene Stepping Pads boast two important safety features. First are the non-slip friction pads installed on the feet to assure steadfast placement and prevent surface damage. Second, each pad is machine-stamped with 131 traction protrusions to facilitate a non-slip surface which is especially beneficial if you're wearing Tyvek® shoe covers.



CATALOG NO.	DESCRIPTION	PRICE
CSSP100K	Crime Scene Stepping Pads, Set of 10	

SCENE GUARD PHOTOGRAPHY BARRIER

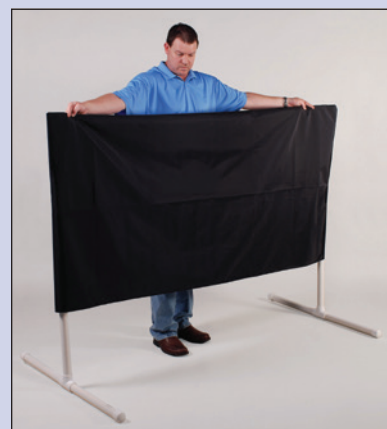
Preserving and protecting a crime scene is one of the first duties of investigators. Part of that responsibility is preventing the public from viewing what may be a shocking scene. Scene Guard is a portable, rapidly assembled privacy screen that effectively shields the scene from public view, and allows medical personnel and investigators to operate more securely.

Only one person is required to erect Scene Guard and no tools are required. Simply connect the pieces of the heavy duty PVC structure and slip the weather resistant, highly durable nylon cover into place. The sturdy, wind-resistant assembly can be used outdoors or indoors, including any public areas where privacy and security are required. For larger scenes, multiple barriers may be attached together.



FCCSGD01 CONTENTS:

- 2- Support Feet 33" (83.82cm)
- 2- Support Legs 38" (96.52cm)
- 2- Cross Supports 35" (88.90cm)
- 1- Nylon Screen 6' x 40" (182.8cm x 101.6cm)
- 1- Nylon Carrying Case w/Handgrips
- 2- Extension Clips



Scene Guard can be assembled in minutes by a single person—no tools required!



Scene Guard is portable and comes in a handy carrying bag for easy deployment.

CATALOG NO.	DESCRIPTION	PRICE
FCCSGD01	Scene Guard Photography Barrier	

Phone: +1.919.554.2244 Fax: +1.919.554.2266

**SHOP
ONLINE** 
www.sirchie.com



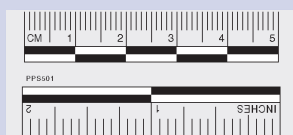
No. EPS20G



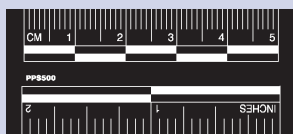
No. EPS20B



No. EPS20W



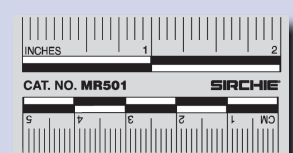
No. PPS501



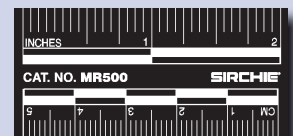
No. PPS500



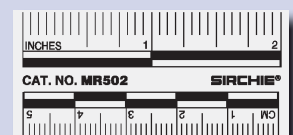
No. PPS502



No. MR501



No. MR500



No. MR502

PHOTO EVIDENCE RULES (DISPOSABLE)

These high-contrast photo rules are printed on 90 lb. index card stock with a non-adhesive back in contrasting black, white or gray for use on all color backgrounds. Lay next to developed prints, and photograph with any camera.

CATALOG NO.	DESCRIPTION	PRICE
EPS20G	Disposable Photo Evidence Rule, Black on Gray, 100 each	
EPS20B	Disposable Photo Evidence Rule, White on Black, 100 each	
EPS20W	Disposable Photo Evidence Rule, Black on White, 100 each	

PHOTO EVIDENCE SCALES (ADHESIVE BACK)

These scales are 2" (50mm) wide and are printed on flat, pressure-sensitive label stock with a non-permanent adhesive back. Use them on vertical or horizontal surfaces. Fingerprints, traces of blood, and bullet holes are easily measured for photographic purposes.

CATALOG NO.	DESCRIPTION	PRICE
PPS500	Adhesive Photo Evidence Scale, White on Black, 50 each	
PPS501	Adhesive Photo Evidence Scale, Black on Gray, 50 each	
PPS502	Adhesive Photo Evidence Scale, Black on White, 50 each	

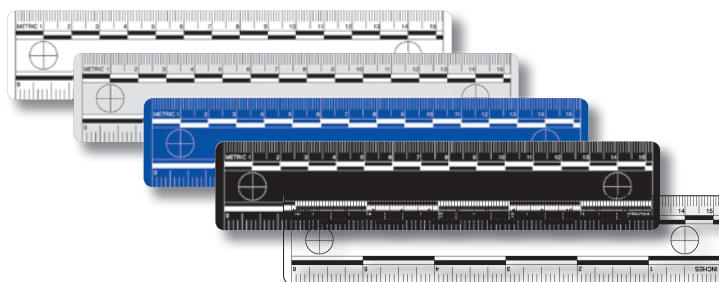
PHOTO EVIDENCE SCALES (MAGNETIC)

SIRCHIE® offers a full line of magnetic scales to facilitate evidence photography when ferrous surfaces such as file cabinets, desks, or motor vehicles are involved. Magnetic scales are made of soft vinyl magnetic backing material. Sold in packs of ten.

CATALOG NO.	DESCRIPTION	PRICE
MR500	Magnetic Photo Evidence Scale, White on Black, 10 each	
MR501	Magnetic Photo Evidence Scale, Black on Gray, 10 each	
MR502	Magnetic Photo Evidence Scale, Black on White, 10 each	

PHOTO EVIDENCE SCALES (VINYL)

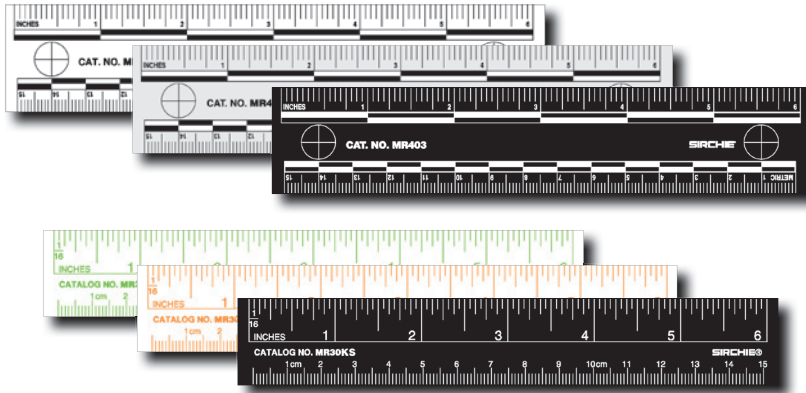
Use SIRCHIE's 6" (15cm) vinyl scales when photographing evidence for precise measurement. The scales are calibrated in both inches and millimeters with crosshairs at each end. The 2 mil matte-finish vinyl eliminates reflections.



CATALOG NO.	DESCRIPTION	PRICE
PPS400	Vinyl Photo Evidence Scale, White, 10 each	
PPS401	Vinyl Photo Evidence Scale, Gray, 10 each	
PPS402	Vinyl Photo Evidence Scale, Blue, 10 each	
PPS403	Vinyl Photo Evidence Scale, Black, 10 each	
PPS404	Vinyl Photo Evidence Scale, Transparent, 10 each	

MAGNETIC EVIDENCE SCALES

SIRCHIE® offers a full line of magnetic scales to facilitate evidence photography when ferrous surfaces such as file cabinets, desks, or motor vehicles are involved. These magnetic scales are made of soft vinyl magnetic backing material and measure 6" (15cm) long. Available in white, gray, black, fluorescent green, and fluorescent orange.

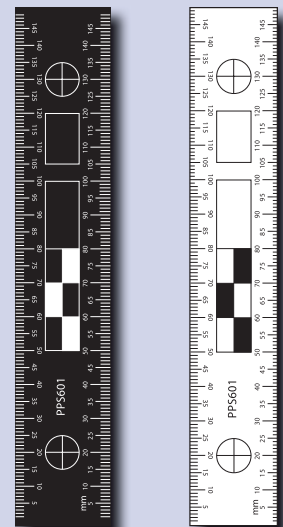
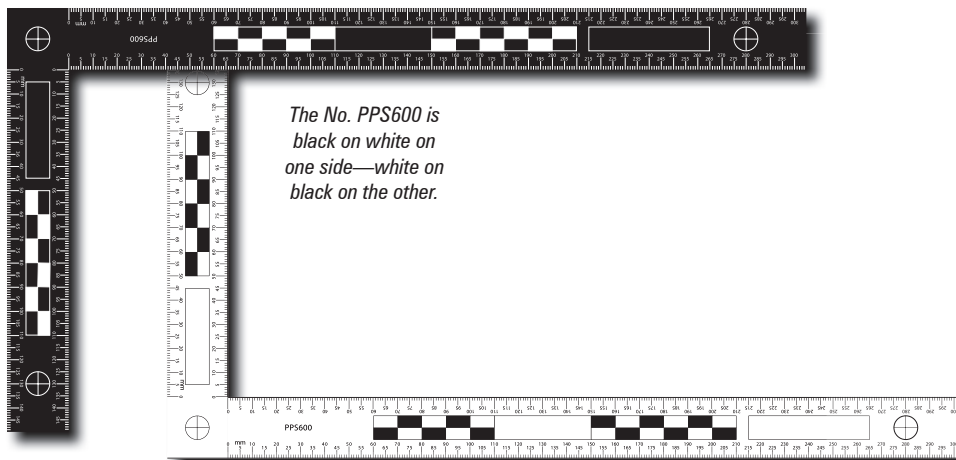


Photographs taken at a crime scene provide a permanent photographic record of the crime scene, related areas and physical evidence. It is important to use scales when photographing the crime scene and potential evidence to show the appropriate scale of the items being photographed.

CATALOG NO.	DESCRIPTION	PRICE
MR400	Magnetic Evidence Scale, White, 10 each	
MR401	Magnetic Evidence Scale, Gray, 10 each	
MR403	Magnetic Evidence Scale, Black, 10 each	
MR30FG	Magnetic Evidence Scale, Fluorescent Green, 10 each	
MR30FO	Magnetic Evidence Scale, Fluorescent Orange, 10 each	
MR30KS	Magnetic Evidence Scale, Black, 10 each	

SCALES IN MACROGRAPHY PHOTOGRAPHY

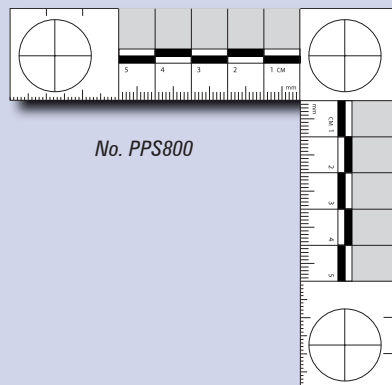
These scales are designed primarily for footwear and tire track impression comparisons. They are excellent for verifying perspective distortion. The scales are printed on rigid 40 mil-thick vinyl plastic and feature exceptionally sharp division indicators. They also feature a glare-free finish for photographing in most lighting conditions.



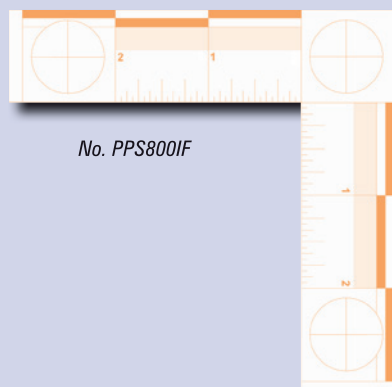
No. PPS601 is a reversible scale that is black on one side and white on the other.

CATALOG NO.	DESCRIPTION	PRICE
PPS600	Reversible Scale, 300mm x 150mm	
PPS601	Reversible Scale, 150mm	
PPS6000	Set of 2: 1 ea. PPS600 & PPS601	

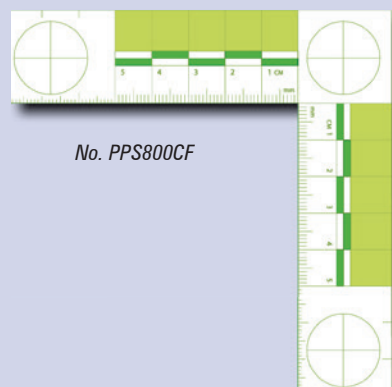
**SHOP
ONLINE** 
www.sirchie.com



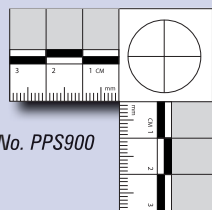
No. PPS800



No. PPS800IF



No. PPS800CF



No. PPS900

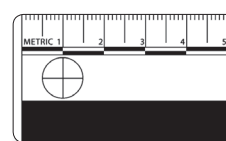
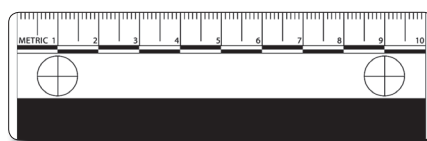
FORENSIC SCALES

These scales are designed primarily for forensic professionals who are involved with the study of the anatomy, growth, and disease of teeth. They feature superb divisional definition in English or metric. Black and white scales are provided on matte-finish vinyl and a smaller adhesive backed 55mm version is available on rolls of 100. The fluorescent scales in green or orange are printed on 90 lb. card stock.

CATALOG NO.	DESCRIPTION	PRICE
PPS800	Forensic Scale, Black on White, 105mm x 105mm, 1 each	
PPS801	Forensic Scale, Black on White, 4 1/8" x 4 1/8" (English), 1 each	
PPS800IF	Forensic Scale, Fluorescent Orange, 4 1/8" x 4 1/8" (English), 5 each	
PPS800CF	Forensic Scale, Fluorescent Green, 105mm x 105mm, 5 each	
PPS900	Forensic Scale, Adhesive Back, Black on White, 55mm x 55mm, 100/roll	

EVIDENTIAL PHOTOGRAPHY SCALES

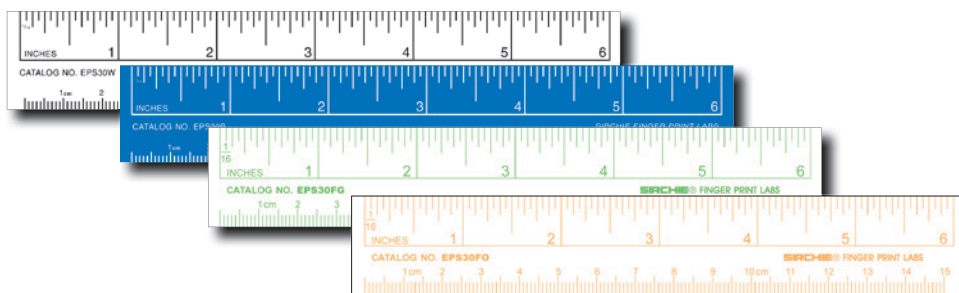
The PPS300 and PPS301 scales are designed for evidential photography. They are printed on rigid matte-finish vinyl for reflection-free photography. Scales are available in two sizes and feature excellent divisional definition.



CATALOG NO.	DESCRIPTION	PRICE
PPS300	Evidential Photography Scales, 10cm, 10 each	
PPS301	Evidential Photography Scales, 5cm, 10 each	

VINYL PHOTO EVIDENCE RULERS

These rulers are printed on 10 mil thick vinyl and feature English and metric measurements. The matte-finish surface eliminates photographic reflections and may be written on. Rulers are 6" (15cm) long and are available in white, blue, fluorescent green, or fluorescent orange.



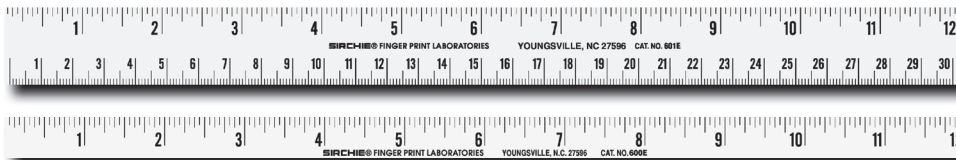
CATALOG NO.	DESCRIPTION	PRICE
EPS30W	Vinyl Photo Evidence Ruler, Black on White, 10 each	
EPS30B	Vinyl Photo Evidence Ruler, White on Blue, 10 each	
EPS30FG	Vinyl Photo Evidence Ruler, Fluorescent Green on White, 10 each	
EPS30FO	Vinyl Photo Evidence Ruler, Fluorescent Orange on White, 10 each	

Forensic Measurement

Crime Scene Documentation/Photography

SEARCH REFERENCE EVIDENCE RULE TAPE

SIRCHIE®'s evidence rule tape is ideal for marking unusual surface shapes for photography. The tape may be applied to almost any surface and removes easily after photography. The 1" wide 601E is printed in both English and metric in increments of 1/16" and 1mm. Both evidence rule tapes are printed black on matte white tape in 500" rolls on a 1" core. Our 1" wide photo tape may be custom printed with a specific agency name (specify catalog no. 602E when ordering).



CATALOG NO.	DESCRIPTION	PRICE
600E	1/2" Wide x 500" Roll, 12" (30cm) Repeat, 1 roll	
601E	1" x 500" (2.5cm x 12.7m) 12" (30cm) Repeat, 1 roll	
601ED	601E Tape w/Metal Tape Dispenser, 1 roll	
602E	1" X 500" Tape Only w/Department Imprint, 1 roll	
Minimum Order: 24 Rolls		

REFERENCE EVIDENCE TAPE

This tape features a continuous scale repeat of 0" to 12" and 0-30 cm on a matte, white-finish tape that is 1" wide on a 30-foot roll. The tape features a low-tack, non-permanent adhesive that may be easily removed from any surface without damaging the surface. The tape is printed with divisions for both inches and centimeters.

CATALOG NO.	DESCRIPTION	PRICE
PPS100	Photo Evidence Tape, 1" x 30', 1 roll	

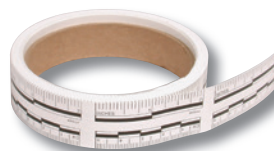
JUMBO REFERENCE EVIDENCE TAPE

This jumbo evidence tape features a major number division. Tape is yellow with a matte finish and is printed on a 1 1/4" wide x 30' roll. The scale repeats continuously every 12 inches with an alternating 6" black band on 12" divisions. The tape features a low-tack, non-permanent adhesive that allows for easy removal. Use this tape indoors or outdoors.

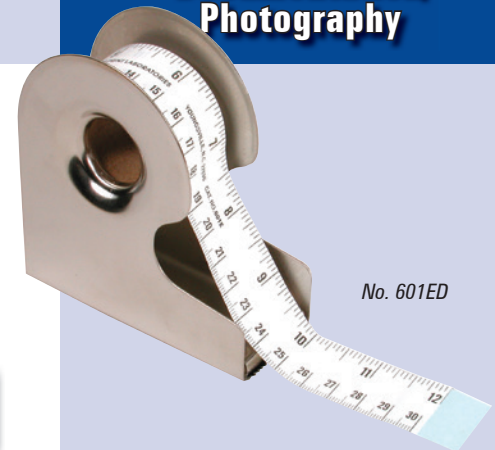
CATALOG NO.	DESCRIPTION	PRICE
PPS101	Jumbo Reference Evidence Tape, 1 1/4" x 30', 1 roll	

REFERENCE EVIDENCE SCALES LABELS

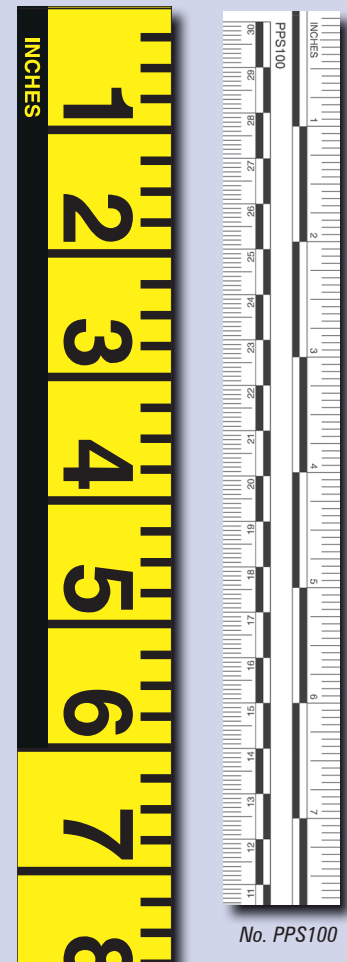
SIRCHIE offers two 1" wide evidence scale labels on a roll for added convenience. The PPS200 is a 20mm scale designed for reference photography. The PPS503 is our standard English and Metric 2" (5cm) scale. Scales are printed on a white matte removable label stock. Both photo evidence scale labels come on rolls of 150 each on a 3" core.



CATALOG NO.	DESCRIPTION	PRICE
PPS503	Reference Evidence Scale 2" (5cm), Roll of 150	
PPS200	Reference Evidence Scale, 20mm, Roll of 150	

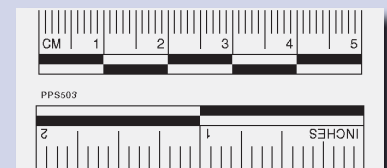


No. 601ED

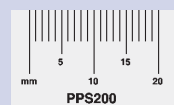


No. PPS100

No. PPS101



No. PPS503



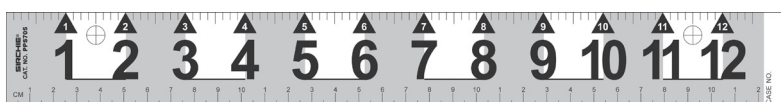
No. PPS200



No. PPS703



No. PPS704



No. PPS705

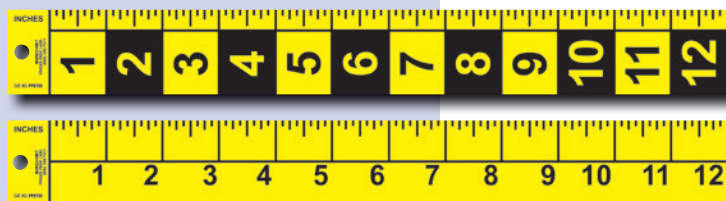
BIG NUMERAL REFERENCE SCALES

Numeral Reference Scales feature a neutral gray coloring for precise photographic exposure. The crisp, sharp black printing provides an ideal target to ensure proper focus. These scales are easy-to-read from a distance and provide both English and metric measure. Available in 2", 6", and 12". Printed on 20 mil thick vinyl.

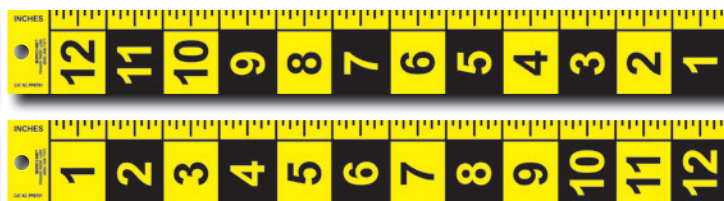
CATALOG NO.	DESCRIPTION	PRICE
PPS703	2" (5cm) Big Numeral Reference Scales, 12 each	
PPS704	6" (15.2cm) Big Numeral Reference Scales, 12 each	
PPS705	12" (30.5cm) Big Numeral Reference Scales, 12 each	

BIG NUMERAL STRAIGHT REFERENCE SCALES

Use these English scales for horizontal or vertical measurements in inches. The 12" scales are manufactured of 1-1/2" x 40 mil thick yellow polystyrene with 1/8" divisions. Scales are printed on both sides to permit horizontal or vertical measurements with a 1/4" hole for hanging.



No. PPS700 Front & Back



No. PPS701 Front & Back

CATALOG NO.	DESCRIPTION	PRICE
PPS700	Big Numeral Straight Reference Scale 12" Horiz/Vert, Reverse, 5 each	
PPS701	Big Numeral Straight Reference Scale 12" Vert, Reverse, 5 each	

BIG NUMERAL TRI-FOLD REFERENCE SCALES

Tri-Fold scales can be configured in three different modes: straight, right angle and dual right angle. The EFR200 measures units in inches and is 36" long when fully extended, 12"x 24" as a right angle and 12" x 12" as a dual right angle. The EFR300 measures units in centimeters and is 90cm long when fully extended, 30cm x 60cm as a right angle and 30cm x 30 cm as a dual right angle.

Scales are manufactured of 1 1/2" wide x 40 mil thick yellow polystyrene with black divisions. Scales are printed on both sides to permit horizontal or vertical measurements with a 1/4" hole for hanging if required.



The EFR200 folds to 12" for easy transportation and storage



No. EFR200 in dual right angle configuration

CATALOG NO.	DESCRIPTION	PRICE
EFR200	Tri-Fold Scale, 36" Straight	
EFR300	Tri-Fold Scale, 90 Centimeter Straight	

Metal Evidence Scales

Crime Scene Documentation/Photography

PHOTOGRAPHIC EVIDENCE FOLDING SCALE

These small folding scales are perfect when photographing evidence such as bullet casings, fingerprints, bone and glass fragments, etc. It's rugged, black anodized aluminum construction allows it to be used indoors or out regardless of the weather.

The EFR400E English scale measures 13.5" when fully extended and readily folds down to 5.25" for convenient transportation and storage. The EFR400M metric scale measures 34.29cm fully extended and 13.35cm folded.

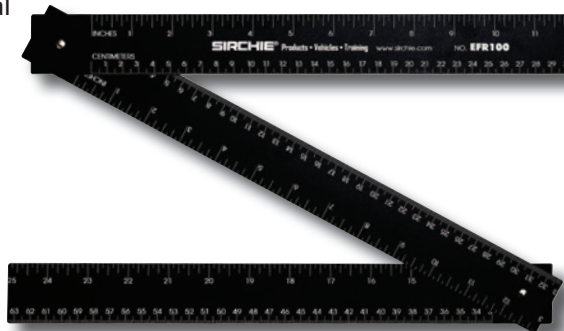
CATALOG NO.	DESCRIPTION	PRICE
EFR400E	English Photo Evidence Folding Scale	
EFR400M	Metric Photo Evidence Folding Scale	

PHOTOGRAPHIC EVIDENCE FOLDING SCALE

This folding scale is a must when photographing evidence such as handprints, footprints, tire tracks and physiological fluid dispersion. When it is opened at a right angle, the scale verifies any departure of the camera from a true vertical or horizontal position. It is constructed of metal for a long life.

EFR100 FEATURES:

- Material: Aluminum
- Finish: Matte Black Anodized
- Indicators: Flat White
- Scaling: 0" to 25" (0cm to 63cm) x 0" to 12" (0cm to 30cm)



CATALOG NO.	DESCRIPTION	PRICE
EFR100	Photo Evidence Folding Scale	

METAL FORENSIC SCALES

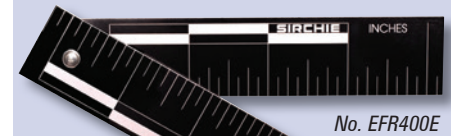
These scales are designed primarily for forensic professionals who are involved with the study of the anatomy, growth and disease of teeth. They feature superb divisional definition in English or metric. Black anodized aluminum construction ensures years of service.

CATALOG NO.	DESCRIPTION	PRICE
PPS800EM	Forensic Scale, Metal, 4 1/8" x 4 1/8" (English), 1 each	
PPS800MM	Forensic Scale, Metal, 105mm x 105mm, 1 each	
PPS800EMM	Forensic Scale, Metal, English/Metric, 1 each	

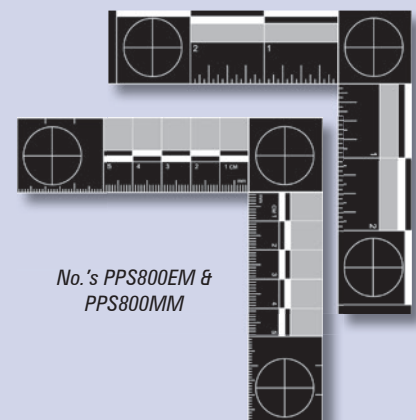
METAL PHOTO EVIDENCE SCALES

Use these scales when photographing evidence for precise measurement. They are precision laser-engraved on rugged, black anodized aluminum which makes them long-lasting and more durable than traditional scales. The 6" scale has both English and metric measure and includes crosshairs at each end. Two short scales are available in 5cm and 10cm lengths.

CATALOG NO.	DESCRIPTION	PRICE
PPSM403	6" (15cm) Metal Photo Evidence Scale	
PPSM300	10cm Metal Photo Evidence Scale	
PPSM301	5cm Metal Photo Evidence Scale	

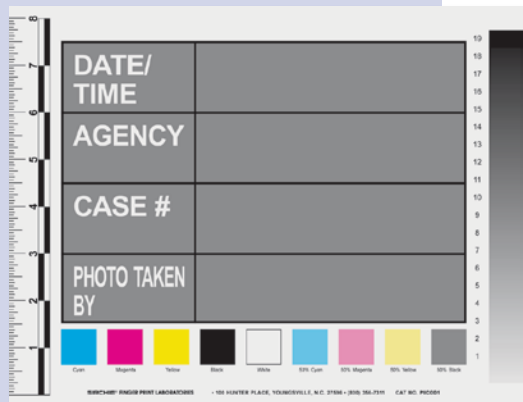


No. EFR100 Right Angle Configuration

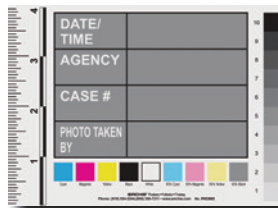


No.'s PPS800EM & PPS800MM





No. PIC001



No. PIC002

PHOTOGRAPH SCALE AND IDENTIFICATION CARDS

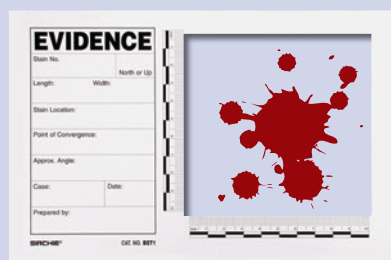
Each card has a color scale and a gray scale, as well as a space for identifying the photographer, agency and date. The side scales permit relative size of objects of evidence. Two sizes are available.

CATALOG NO.	DESCRIPTION	PRICE
PIC001	8 1/2" x 11", Pack of 25	
PIC002	4" x 5 3/8", Pack of 25	

BLOOD STAIN/EVIDENCE TEMPLATES

When it isn't possible or practical to analyze blood stains at the crime scene, this handy template permits you to record the evidence in a format acceptable in most jurisdictions. The template is printed on pressure-sensitive, removable adhesive stock that will hold fast to walls, floors and ceilings. Each template is die-cut and features a pre-printed scale and information blanks. Document blood spatters, bullet holes, tool marks and many other kinds of physical evidence (10cm x 10cm).

CATALOG NO.	DESCRIPTION	PRICE
BST1	Blood Stain/Evidence Template, Pack of 15	
BST2	Blood Stain/Evidence Template, Open Scale, Pack of 15	



No. BST1



No. BST2

THE SEARCH ROD

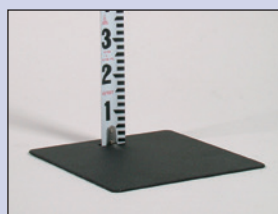
Originally designed for use by surveyors, the SEARCH Rod is a semi-rigid measuring tape that is rapidly finding its way into crime scene and traffic investigation kits. This handy tool is available in inches or metric units with the numbers on one side printed in black-on-white and the other with red-on-white—offering outstanding photographic contrast.

The standard SEARCH Rod is 6.5' long and 7/8" wide. The metric version is 2 meters long and 2.3cm wide. The tape stores in a high-impact plastic case and pulls out completely—giving you a simple, efficient measuring tool. When you're finished, just push the tape back into the case.

Measure from the ground or floor up with ascending numbers. The standard version has reversed printing every other foot giving a clear indication of the measurement—even from a distance. The metric version uses large numbers to indicate a point every 10cm with every 20cm on the red side in reversed printing.



CATALOG NO.	DESCRIPTION	PRICE
PRI100	2-Sided SEARCH Rod 6 1/2' tall (grad. feet, 10ths, 100ths)	
PRF300	2-Sided SEARCH Rod 6 1/2' tall (grad. feet and inches)	
PRM200	SEARCH Rod 2M tall (grad. in metric)	
PRM200B	Hands-Free Metal Base	



An optional metal base is available for hands-free use.

FIBERGLASS REEL TAPES

These rugged, plastic-cased open reel tapes are perfect for measuring traffic and crime scenes.

Fiberglass tape is nonconductive for added safety.



CATALOG NO.	DESCRIPTION	PRICE
SK700	Fiberglass Reel Tape Measure, 100 ft./30 meters	
SK701	Fiberglass Reel Tape Measure, 300 ft./90 meters	

PRECISION STEEL TAPE MEASURES

SIRCHIE®'s precision steel tape measures are quality tape measures which are housed in an impact-resistant, fluorescent orange ABS case. Their flexible steel blades are 5/8" (1.9cm) wide and feature black and red markings on a yellow background. Each steel blade is covered with polycoat for a longer life. Tape measures come with a handy, folding steel handle designed to fit the hand comfortably while allowing rapid deployment and rewinding.



CATALOG NO.	DESCRIPTION	PRICE
SK800	Steel Tape Measure, Manual (50 ft./15m)	
SK900	Steel Tape Measure, Manual (100 ft./30m)	
KCP250	Retractable Steel Tape Measure, 3m	
KCP114	Retractable Steel Tape Measure, 2m (3 per pack)	

DIGITAL RANGE FINDER

Use the DRF100 Digital Range Finder as an alternative to conventional tape measures. This tool offers ease of use and accuracy to the investigator in the field.

DRF100 FEATURES:

- Four Measurement Systems – Inches, feet and inches, decimal feet, and metric
- Length, Area and Volume Measuring capacity
- Two measuring reference points – Back and Front of tool
- Ergonomic Soft Grip
- Carrying case with belt loop
- Tripod Mount



CATALOG NO.	DESCRIPTION	PRICE
DRF100	Digital Range Finder	

SK700/SK701 FEATURES:

- Open reel fiberglass tape
- English/metric (SK700) = 100 ft. (30m); SK701 = 300 ft. (90m)
- 1/2" (1.3cm) wide blade with folding end hook and fast rewind crank
- PVC coated blade is flexible, waterproof, non-shrinking & non-conductive
- Durable impact resistant frame
- Non-glare, easy to read, white blade graduated in feet, inches, 8ths on one side; and meters and centimeters on the other
- Accuracy inspected

KCP250 FEATURES:

- Handy pocket/belt clip retractable tape
- Locking mechanism for locking tape in position
- Metric 3m x 13mm steel blade
- Graduated in meters, centimeters, and millimeters

KCP114 FEATURES:

- Handy pocket retractable tape
- Locking mechanism for locking tape in position
- English/metric steel blade
- English graduations to 16ths accuracy on top of blade; Metric graduations to 1mm accuracy on bottom of blade
- Magnetic back for attaching onto metal surfaces
- Durable plastic case

DRF100 SPECIFICATIONS:

- Dimensions 2 1/4" x 4" x 1 1/4" (58 x 100 x 32 mm)
- Measuring range 0.05 ... 40 mA (2 in ... 131 ft)
- Distance measuring accuracy – typical accuracy ± 1.5 mm ($\pm 1/16$ in)B
- Measuring duration – typical <0.5 s – maximum 4 s
- Lowest indication unit 1/16 in; 0.005 ft; 1 mm
- Operating temperature (+14° F ... + 122° F) – 10 °C ... +50 °C
- Storage temperature (–4 °F ... +158 °F) –20 °C ... +70 °C
- Relative air humidity, max. 90 %
- Laser class 2
- Laser type 635 nm, <1 mW
- Laser beam diameter (at 25 °C/77 °F), approx.
 - at 10 m (33 ft) distance 6 mm (1/4 in)
 - at 40 m (131 ft) distance 24 mm (15/16 in)
- Batteries 4 x 1.5 V LR03 (AAA)
- Rechargeable battery 4 x 1.2 V KR03 (AAA)
- Battery service life, approx.
 - Individual measurements, approx. 300000
 - Continuous measurement mode, approx. 5 HoursD
- Automatic switch-off after approx.
 - Laser 20 s
 - Distance Measurer (without measurement) 5 min
- Weight according to EPTA-Procedure 01/2003 0.18 kg (6.35 oz)
- Protection class (excluding battery compartment) IP 54 (dust and splashwater protected)



No. RMT03 is pictured in use.

RMDT200 SPECIFICATIONS:

- Backlight LCD display for low-light usage.
- Auto Shut-off extends battery life.
- Built-in Kickstand
- Display: LCD segment; 7 digits; up to 99,999 ft. 11 in. or 99,999.9 in tenths and metric
- Number Size: 1/2 in.
- Warranty: 2 year limited
- Memory: 8 measurement recall
- Add Wheel Radius for wall-to-wall measuring
- Units: feet & inches; continuous inches; feet & 10ths (decimal feet); metric
- Calculations: Length, area, unit conversions
- Power: 2 AA batteries
- Wheel Composition: Spoke wheel with precision turned circumference
- Maximum Speed: 10 mph (16.25 Km/h)
- Product Weight: 7 lbs. (3.17 kg)
- Length: Extended: 42 in. (106.7 cm);
- Storage: 21 in. (53.4 cm)
- Accuracy: 2 inches in 100 feet, 99.8%
- Wheel: 4 ft. (1.22 m) circ.; 15 1/2 in. (31.75 cm) dia.
- Frame Material: 3/4 in. steel tubing
- Collapsing Method: 1 fail-safe barrel clamp

ROLLER MEASURING WHEELS

All models are safety orange in color and feature a 5-figure display with a straight handle. They measure feet and inches to 9999' 11". Choose either a single- or double-wheel model with 1-foot circumference or a single-wheel model with a 3-foot circumference. Also available in metric, meters, and tenths to a maximum of 999.99 meters. Retractable handle on all units.



CATALOG NO.	DESCRIPTION	PRICE
RMT01	Single Wheel, (Feet and Inches)	
RMT02	Double Wheel, (Feet and Inches)	
RMT03	Large Single Wheel, (Feet and Inches)	
RMT01M	Single Wheel, (Metric)	
RMT03M	Large Single Wheel, (Metric)	

DIGITAL MEASURING ROLLER

Counter Size & Placement

The huge digital counter of the RMDT200 is in the most protected spot on the wheel. With the handle up, it is nearly impossible for the counter to come into contact with the ground. With the handle down, the roll bar offers solid protection.

Swan-neck, Ergonomic Handle

The patent-pending, thumb-up grip ensures less wrist strain and superior control.

Reliable Input System: Magnetic Sensors

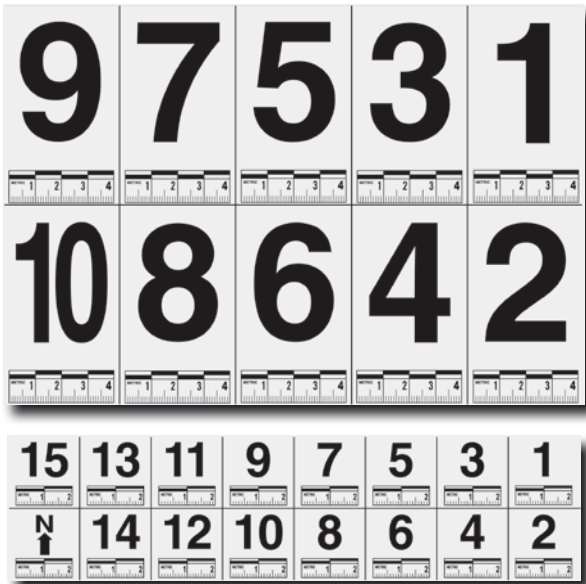
Dust, dirt and other particles can disrupt a light beam used in competitive units. The magnetic pick-up of the RMDT200 does not have these problems.



CATALOG NO.	DESCRIPTION	PRICE
RMDT200	Digital Measuring Roller	

PHOTOGRAPH MEASURE AND IDENTIFIER

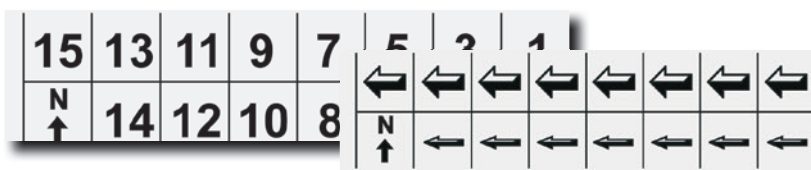
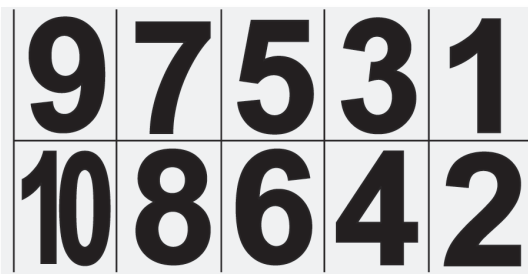
These low-tack, adhesive-backed labels are for evidential photography. Fingerprints, blood spatters, bullet entry and other physical evidence can be identified, sequenced and sized with these pressure-sensitive labels.



CATALOG NO.	DESCRIPTION	PRICE
PPS201	Numbers w/0-4cm Scale, 10 pack	
PPS202	Numbers w/0-2cm Scale, 10 pack	

PHOTOGRAPHY IDENTIFIER BOOKLETS

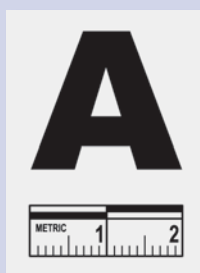
The crime scene photographer's mission is reduced in complexity with **SIRCHIE**®'s identifier booklets. Fingerprints, footprints, blood spatters, bullet holes and other physical evidence may be identified, sequenced and oriented. The booklets feature a pressure-sensitive, non-permanent adhesive which permits easy removal from almost any surface.



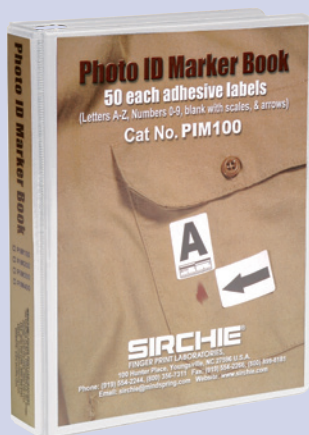
CATALOG NO.	DESCRIPTION	PRICE
PNBL100	Large Numbers Booklet, 25 sheets	
PNBS100	Small Numbers Booklet, 25 sheets	
PAB100	Arrows Booklet, 25 sheets	



Photography Identifier Booklets are bound with a sturdy manila cover and chip board back.



Actual Size



No. PIM100 Photo ID Marker Book

PHOTOGRAPHY ID MARKERS

If you're tired of flipping pages and sorting through stacks of photo ID markers, then our Photo ID Marker kit is just what you need. These rugged, clear cases are divided into compartments that are ideal for organizing markers so they're ready when you need them—no more searching! Like our other photo numbers and scales, these photo ID markers feature a pressure-sensitive, non-permanent adhesive for easy removal from almost any surface. Identify, sequence and size many different types of physical evidence. Two kits available: PIM600 includes a 12-compartment case with 1" x 1.375" markers containing numbers 0-9 with 2cm Scale, blanks with 2 cm Scale and arrows, 50 ea. (600 total markers). PIM1800 includes a 36-compartment case with 1" x 1.375" markers containing numbers 0-9 with 2cm Scale and letters A-Z with 2 cm Scale, 50 ea. (1,800 total markers).

CATALOG NO.	DESCRIPTION	PRICE
PIM600	Photo ID Markers, Numbers 0-9/50 ea.	
PIM1800	Photo ID Markers, Numbers 0-9, Letters A-Z/50 ea.	
PIM700	Photo ID Markers, Blank, 200 ea.	

PHOTO ID MARKER BOOKS

These labels are 1" x 1.375" with removable adhesive backing, just like the PIM600 and PIM1800 labels, but have rounded corners. Labels are printed on 8 1/2" x 5 1/2" sheets and come in a handy 3-ring binder containing 50 of each label.



CATALOG NO.	DESCRIPTION	PRICE
PIM100	A-Z, 0-9, Blanks w/ Scale & Arrows, 50 each	
PIM200	0-9, Blanks w/ Scale & Arrows, 50 each	
PIM300	A-J, Blanks w/ Scale & Arrows, 50 each	
PIM400	A-Z & Arrows, 50 each	

PHOTO EVIDENCE LABEL

These Photo Evidence Labels feature a pressure-sensitive backing that may be attached to evidence or used as free-standing identification for photographic purposes. All relevant information including how, when, where and conditions may be noted to establish the permanent history of the object. Dimensions: 4" x 2 3/4".

CATALOG NO.	DESCRIPTION	PRICE
EP3	Photo Evidence Label, 4" x 2 3/4", 100 ea.	

EVIDENCE PHOTOGRAPH

CATALOG NO. EP3

Case No. _____ Photo No. _____

Location _____

Date _____ Time _____

Camera Height _____ Lens-Subject Dist. _____

Camera Type _____ Shutter Speed _____

f stop _____ Film Type _____ ISO _____

Weather _____ Lighting _____

Photographer (s) _____

SIRCHMARK™ Evidence Marking

Crime Scene Documentation/ Photography

SIRCHMARK™ FIRST RESPONDERS EVIDENCE MARKING KIT

SIRCHMARK™ First Responders Evidence Marking Kit provides any first responder with the tools needed to secure a scene and begin the evidence marking process. The kit allows a responder to conduct a scene security and evidence marking mission during day or night. Secure the scene and mark the evidence and items of interest with confidence.



CATALOG NO.	DESCRIPTION	PRICE
SM911	SIRCHMARK™ First Responders Evidence Marking Kit	

SIRCHMARK™ EVIDENCE MARKING PAINT

SIRCHMARK™ Evidence Marking Paint is a highly visible and versatile marking tool for the investigator to identify key evidence at a crime scene or a traffic accident. The inverted design of the can is easy to use and works great on its own or even more easily with the SIRCHMARK™ Evidence Marking Paint Dispenser (SEP200). The paint is not permanent and will wear off naturally within 60 days of application. Available in easily visible colors including fluorescent pink, orange, and yellow, SIRCHMARK™ Evidence Marking Paint is an ideal solution to marking evidence on most surfaces including pavement, gravel, grass, and soil.

The SIRCHMARK™ Evidence Marking Paint Kit includes one can of each color of our Evidence Marking Paint, as well as our Evidence Marking Paint Dispenser in a handy carry bag.



CATALOG NO.	DESCRIPTION	PRICE
SEP100Y	SIRCHMARK™ Evidence Marking Paint, Yellow, 17 oz. can	
SEP100P	SIRCHMARK™ Evidence Marking Paint, Fluorescent Pink, 17 oz. can	
SEP100N	SIRCHMARK™ Evidence Marking Paint, Fluorescent Orange, 17 oz. can	
SEP200	SIRCHMARK™ Evidence Marking Paint Dispenser	
SEP100K	SIRCHMARK™ Evidence Marking Paint Kit	

SM911 KIT CONTENTS:

- 1- BT100 Barrier Tape/Crime Scene
- 1- SEM20N SIRCHMARK™ Evidence Marking Pointers, Orange - pack of 20
- 1- SEM20Y SIRCHMARK™ Evidence Marking Pointers, Yellow - pack of 20
- 1- SEP100N SIRCHMARK™ Evidence Marking Paint, Fluorescent Orange, 17 oz. can
- 1- RCHALK Reflective Chalk
- 1- WCHALK White Chalk - pack of 3 pieces
- 20- EVFG1001 Green Evidence Marking Flags
- 20- EVFW1001 White Evidence Marking Flags
- 20- EVFY1001 Yellow Evidence Marking Flags
- 20- EVFR1001 Red Evidence Marking Flags
- 20- EVFB1001 Blue Evidence Marking Flags
- 1- SBW10 SIRCHMARK™ Brites LED Lights - pk of 10
- 1- RRNBK Write in the Rain Notebook
- 1- RRPEN Write in the Rain Pen
- 1- Carrying Bag

EVIDENCE MARKING PAINT FEATURES:

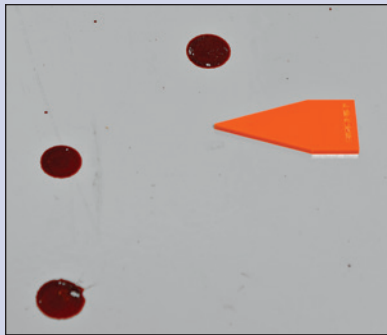
- Three different colors of marking paint for identification and versatility
- Easy to use paint dispenser to make quick, accurate markings
- Large size paint (17 oz) allows investigator to mark up to 300 linear feet per can
- Marking paint is water-based and is ideal for use on most surfaces including pavement, gravel, grass, and soil

SEP100K KIT CONTENTS:

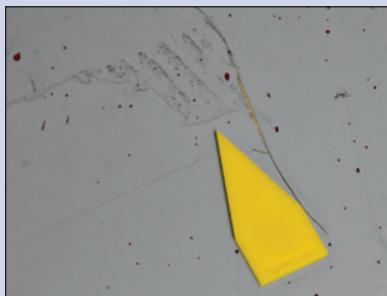
- 1- SEP200 SIRCHMARK™ Evidence Marking Paint Dispenser
- 1- SEP100Y SIRCHMARK™ Evidence Marking Paint, 17oz, Yellow
- 1- SEP100P SIRCHMARK™ Evidence Marking Paint, 17 oz, Fluorescent Pink
- 1- SEP100N SIRCHMARK™ Evidence Marking Paint, 17 oz, Fluorescent Orange



No. SEP100K Evidence Marking Kit



SIRCHMARK™ Orange Evidence Marking Pointer marks suspected blood evidence.



SIRCHMARK™ Yellow Evidence Marking Pointer used to mark the location of a shoeprint at the crime scene.



Evidence Marking Flags can be used with our new SIRCHMARK™ Evidence Marking Cones.

SIRCHMARK™ Evidence Marking

SIRCHMARK™ EVIDENCE MARKING POINTERS

The SIRCHMARK™ Evidence Pointer allows for clear marking of evidence and items of interest at a crime scene. The arrow shape allows an investigator to indicate specific points of interest or unique characteristics of a piece of evidence at the scene to be photographed and documented. These pointers, made of bright colored acrylic, are lightweight yet durable and can be used on any surface including walls and other vertical surfaces when used with StikkiDots or other adhesive materials. The Evidence Pointers can be easily cleaned and reused. The bright color provides high visibility and differentiation against many backgrounds.



CATALOG NO.	DESCRIPTION	PRICE
SEM20Y	SIRCHMARK™ Evidence Marking Pointers, Yellow, 20 each	
SEM20N	SIRCHMARK™ Evidence Marking Pointers, Orange, 20 each	

EVIDENCE MARKING FLAGS

Make evidence easy to relocate or photograph by marking it with these brightly colored evidence flags from **SIRCHIE®**. Flags are 21" tall and come in bright pink, orange, yellow, red, blue, and white. Yellow flags have "Evidence — Do Not Touch" printed in black ink on the flag. Flags are sold in packs of 100.



CATALOG NO.	DESCRIPTION	PRICE
EVFP100	Pink Evidence Flags, 100 each	
EVFO100	Orange Evidence Flags, 100 each	
EVFR100	Red Evidence Flags, 100 each	
EVFB100	Blue Evidence Flags, 100 each	
EVFG100	Green Evidence Flags, 100 each	
EVFW100	White Evidence Flags, 100 each	
EVFY100	Yellow "Evidence—Do Not Touch" Preprinted Flags, 100 each	

SIRCHMARK™ Evidence Marking

Crime Scene Documentation/ Photography

SIRCHMARK™ 6" EVIDENCE MARKING CONES

SIRCHMARK™ Evidence Marking Cones make your job of marking evidence at the scene incredibly easy. Offered blank or with numbered decals on four sides in sets of 20, these cones are made of durable molded plastic and are able to be used in all types of weather. SIRCHMARK™ Evidence Marking Cones are available in 5 colors and work extremely well with SIRCHMARK™ Evidence Marking Flags that can be inserted through a hole in the top of the cone; SIRCHMARK™ Brites for illumination at night; and SIRCHMARK™ reflectors that are adhesive and reflect light for night time crime scenes.



CATALOG NO.	DESCRIPTION	PRICE
SCR1000	Red SIRCHMARK™ Evidence Marking Cones, 6", Blank, 20 each	
SCR0120	Red SIRCHMARK™ Evidence Marking Cones, 6", Numbered 1-20	
SCR2140	Red SIRCHMARK™ Evidence Marking Cones, 6", Numbered 21-40	
SCR4160	Red SIRCHMARK™ Evidence Marking Cones, 6", Numbered 41-60	
SCR6180	Red SIRCHMARK™ Evidence Marking Cones, 6", Numbered 61-80	
SCR8110	Red SIRCHMARK™ Evidence Marking Cones, 6", Numbered 81-100	
SCG1000	Green SIRCHMARK™ Evidence Marking Cones, 6", Blank, 20 each	
SCR0120	Green SIRCHMARK™ Evidence Marking Cones, 6", Numbered 1-20	
SCG2140	Green SIRCHMARK™ Evidence Marking Cones, 6", Numbered 21-40	
SCG4160	Green SIRCHMARK™ Evidence Marking Cones, 6", Numbered 41-60	
SCG6180	Green SIRCHMARK™ Evidence Marking Cones, 6", Numbered 61-80	
SCG8110	Green SIRCHMARK™ Evidence Marking Cones, 6", Numbered 81-100	
SCB1000	Blue SIRCHMARK™ Evidence Marking Cones, 6", Blank, 20 each	
SCB0120	Blue SIRCHMARK™ Evidence Marking Cones, 6", Numbered 1-20	
SCB2140	Blue SIRCHMARK™ Evidence Marking Cones, 6", Numbered 21-40	
SCB4160	Blue SIRCHMARK™ Evidence Marking Cones, 6", Numbered 41-60	
SCB6180	Blue SIRCHMARK™ Evidence Marking Cones, 6", Numbered 61-80	
SCB8110	Blue SIRCHMARK™ Evidence Marking Cones, 6", Numbered 81-100	
SCY1000	Yellow SIRCHMARK™ Evidence Marking Cones, 6", Blank, 20 each	
SCY0120	Yellow SIRCHMARK™ Evidence Marking Cones, 6", Numbered 1-20	
SCY2140	Yellow SIRCHMARK™ Evidence Marking Cones, 6", Numbered 21-40	
SCY4160	Yellow SIRCHMARK™ Evidence Marking Cones, 6", Numbered 41-60	
SCY6180	Yellow SIRCHMARK™ Evidence Marking Cones, 6", Numbered 61-80	
SCY8110	Yellow SIRCHMARK™ Evidence Marking Cones, 6", Numbered 81-100	
SCH1000	White SIRCHMARK™ Evidence Marking Cones, 6", Blank, 20 each	
SCH0120	White SIRCHMARK™ Evidence Marking Cones, 6", Numbered 1-20	
SCH2140	White SIRCHMARK™ Evidence Marking Cones, 6", Numbered 21-40	
SCH4160	White SIRCHMARK™ Evidence Marking Cones, 6", Numbered 41-60	
SCH6180	White SIRCHMARK™ Evidence Marking Cones, 6", Numbered 61-80	
SCH8110	White SIRCHMARK™ Evidence Marking Cones, 6", Numbered 81-100	
SCM1000	SIRCHMARK™ Evidence Cones (5 ea. Red, Green, Blue, Yellow), 6", Blank	
SCM0105	SIRCHMARK™ Evidence Cones (5 ea. Red, Green, Blue Yellow), 6", Numbered 1-5	

FEATURES:

- Broad base to keep cone in place during windy weather
- Stackable for easy storage and transport
- Cones come blank or numbered in sequence from 1-20; 21-40; 41-60; 61-80; 81-100
- Numbers on all sides to make crime scene photography easy
- Available in five colors: red; green; yellow; blue; or white



Each SIRCHMARK™ Evidence Marking Cone features a small hole for use with our Evidence Marking Flags.



Illuminate our Evidence Marking cones in dark situations with SIRCHMARK™ Brites.

SIRCHMARK™ BRITES FEATURES:

- These lights are ideal to use either on their own or to illuminate our SIRCHMARK™ Evidence Marking Cones and other Sirchie evidence markers
- Turn on or off easily by twisting the light base
- Water proof - Rubber gasket forms water tight seal for use in rain, snow, other wet conditions, or submersion under water
- Each light uses two CR2032 batteries (included)
- Up to 48 hours of battery life. Batteries are replaceable.
- Approximate dimensions: 1.2" in diameter x 1.1" high
- Mark different types of potential evidence with different color Brights
- Available in white, red, blue, green, or amber (orange)



SIRCHMARK™ Brites are great for illuminating our SIRCHMARK™ Evidence Marking Cones at night time crime scenes.

SIRCHMARK™ REFLECTOR FEATURES:

- These dots are reusable and come in packs of 32
- Available in 5 colors: red; green; yellow; blue; or white

SIRCHMARK™ BRITES

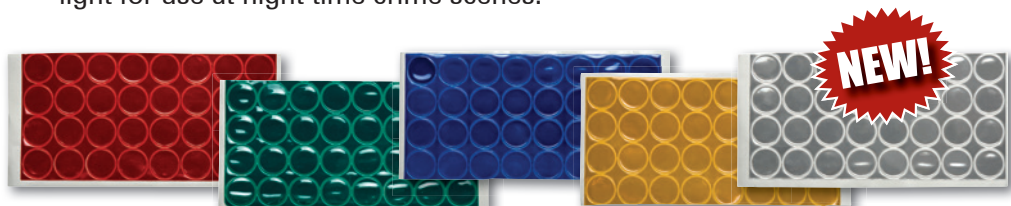
Marking evidence and other items of interest at night is made easy by using SIRCHMARK™ Brites LED Lights, our new battery powered super bright LED light sets. Use lights on their own, with SIRCHMARK™ Evidence Marking Cones, or with Sirchie® Crime/Accident Evidence Numbers and letters to mark your evidence for documentation and photography purposes. Available in packs of 10 with a multiple quantity discount on 5 or more packs (50 or more lights).



CATALOG NO.	DESCRIPTION	PRICE
SBW10	SIRCHMARK™ Brites, White LED Lights, 10 each	
SBR10	SIRCHMARK™ Brites, Red LED Lights, 10 each	
SBB10	SIRCHMARK™ Brites, Blue LED Lights, 10 each	
SBG10	SIRCHMARK™ Brites, Green LED Lights, 10 each	
SBA10	SIRCHMARK™ Brites, Amber LED Lights, 10 each	

SIRCHMARK™ REFLECTORS

SIRCHMARK™ Reflectors are small adhesive circles that can be used with SIRCHMARK™ Evidence Marking Cones to provide a reflective surface for light for use at night time crime scenes.



CATALOG NO.	DESCRIPTION	PRICE
SMR32	SIRCHMARK™ Reflectors, Red, 32 each	
SMG32	SIRCHMARK™ Reflectors, Green, 32 each	
SMB32	SIRCHMARK™ Reflectors, Blue, 32 each	
SMY32	SIRCHMARK™ Reflectors, Yellow, 32 each	
SMW32	SIRCHMARK™ Reflectors, White, 32 each	

Evidence Marking

Crime Scene Documentation/Photography

12" CRIME/ACCIDENT PHOTO LOCATOR CONES

These polychloride multi-purpose cones are for use in a variety of situations. They are bright orange/red in color with black numerals 1-8 and are 12" (30cm) high. Use at crime scenes as evidence markers or for traffic control.

CATALOG NO.	DESCRIPTION	PRICE
CSTC10012	12" Locator Cones (numbered 1-8), 8 pcs.	

9" CRIME/ACCIDENT PHOTO LOCATOR CONES

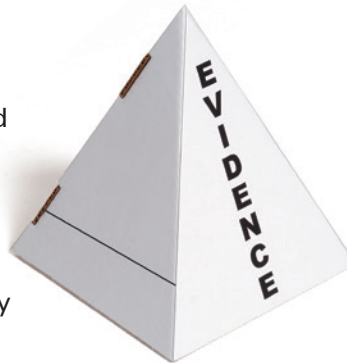
These multi-purpose cones are made of bright orange/red polyethylene plastic and are 9" (22.9cm) high. Cones may be used at crime scenes as evidence markers or for traffic control. Printed with black numerals 1-8 or 9-16.



CATALOG NO.	DESCRIPTION	PRICE
CSTC18V	9" Locator Cones (numbered 1-8), 8 pcs.	
CSTC916V	9" Locator Cones (numbered 9-16), 8 pcs.	

CRIME SCENE ID/EVIDENCE PYRAMID MARKERS

Fold, lock and draw. These crime scene markers are preprinted with "EVIDENCE" on two sides and plain on two sides. Each set includes two black permanent markers, one fine point and one large point, for writing your own instructions. Made of heavy-duty white corrugated cardboard with an 8" square base and 10" height. Sides lock together to form a pyramid. Packaged flat for easy storage.



CATALOG NO.	DESCRIPTION	PRICE
ID100	Crime Scene ID/Evidence Pyramid Markers, 100 each	

REFLECTIVE & WHITE CHALK

Reflective Chalk can be used to create reflective markings which can be illuminated by photoflash or flashlight. Perfect for illuminating the location of evidence that would not normally show in night-time photography, or for use at accident investigations to indicate skid marks and highlight relevant debris. Simply draw any desired marks with the chalk and photograph normally.

White Chalk is recommended for daytime applications.

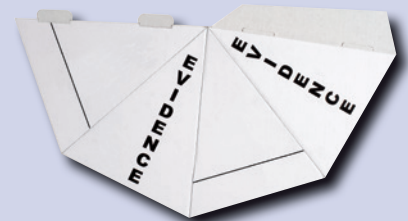


Reflective Chalk is great for night-time, flash photography.

CATALOG NO.	DESCRIPTION	PRICE
RCHALK	Reflective Chalk, 6" x 0.875" dia. (15.24cm x 2.22cm dia.), 1 each	
WCHALK	White Chalk, 1" x 4" x 1" dia. (2.54cm x 10.16cm x 2.54cm dia.), 3 each	



*No. CSTC10012
12" Locator Cones*



No. ID100 Crime Scene ID/Evidence Pyramid Markers come packaged flat for easy storage and assembly.



Use our White Chalk for marking the location of evidence in the daytime on surfaces such as concrete and asphalt.



Indicators are available in your choice of aluminum or plastic (short sizes available in plastic only).

They are fabricated of one-piece 0.032" yellow vinyl-clad aluminum or .050" thick polystyrene material for long-life and durability. They feature a matte finish to reduce reflections and their A-frame form allows for nested storage.



Short size available.

CRIME/ACCIDENT PHOTO EVIDENCE NUMBERS

These are numbered signs for use at crime or accident scenes to indicate the location of relevant evidence. Standard sizes are 4.25"W x 7" tall (10.8cm x 17.8cm). Short sizes are 3.5"W x 2.625" tall (8.9cm x 6.7cm).



Short size available.

CATALOG NO.	DESCRIPTION	PRICE
PEN15	Aluminum Photo Numbers (1-15)	
PEN1650	Aluminum Photo Numbers (16-50)	
PEN5199	Aluminum Photo Numbers (51-99)	
PEN15V	Plastic Photo Numbers (1-15)	
PEN1650V	Plastic Photo Numbers (16-50)	
PEN5199V	Plastic Photo Numbers (51-99)	
PEN15VS	Short Plastic Photo Numbers (1-15)	
PEN1650VS	Short Plastic Photo Numbers (16-50)	
PEN5199VS	Short Plastic Photo Numbers (51-99)	

CRIME/ACCIDENT PHOTO EVIDENCE ALPHABET

Use these alphabet signs (A-Z) with number signs or for designating sequential photography. Standard sizes are 4.25"W x 7" tall (10.8cm x 17.8cm). Short sizes are 3.5"W x 2.625" tall (8.9cm x 6.7cm).



Short size available.

CATALOG NO.	DESCRIPTION	PRICE
PEA26	Aluminum Photo Alphabet (A-Z)	
PEA26V	Plastic Photo Alphabet (A-Z)	
PEA26VS	Short Plastic Photo Alphabet (A-Z)	

CRIME/ACCIDENT PHOTO DIRECTION INDICATORS

Use these orientation indicators in combination with the letter and number indicators. They also may be used above as focus pointers of exceptional evidence items. Each set consists of 4 "UP" indicators, 4 "DOWN" indicators, 4 "LEFT/RIGHT" indicators and one "NORTH" indicator. Standard sizes are 4.25"W x 7" tall (10.8cm x 17.8cm). Short sizes are 3.5"W x 2.625" tall (8.9cm x 6.7cm).

CATALOG NO.	DESCRIPTION	PRICE
PDN17	Aluminum Direction Indicators, 13 each	
PDN17V	Plastic Direction Indicators, 13 each	
PDN17VS	Short Plastic Direction Indicators, 13 each	

Evidence Measuring & Marking Kits

Crime Scene Documentation/Photography

MASTER MEASURING SCALES KIT

The Master Measuring Scales Kit contains the greatest assortment of measuring scales imaginable. From our 1/2" (1.3cm) wide Photo Evidence Rule to the 30 ft. (9m) Jumbo Reference Evidence Rule Tape, practically any measuring task can be accomplished. Some scales are disposable, others can be used over and over again. Also included are call-out evidence ID numbers with included scales.

This vast assortment includes English and metric scales, and some are even printed in both. Even fluorescent scales that glow brightly under longwave UV light have been provided.



MMSK1000 CONTENTS:

- 1- 600E Photo Evidence Rule Tape, .5" x 500" (1.3cm x 12.7m), 12" (30cm) repeat
- 1- 601E Photo Evidence Rule Tape, 1" x 500" (2.5cm x 12.7m), 12" (30cm) repeat
- 1- EFR100 Photo Evidence Folding Scale 0-24" x 0-12" (0-61cm x 0-30.5cm)
- 1- EFR200 Big Numeral Tri-Fold Ref. Scale, 36" (straight measure, unfolded)
- 1- EFR300 Big Numeral Tri-Fold Ref. Scale, 90cm (straight measure, unfolded)
- 1- EPS20B Disposable Photo Evidence Rule, White on Black, 2" (5cm), 100 pk.
- 1- EPS20G Disposable Photo Evidence Rule, Black on Gray, 2" (5cm), 100 pk.
- 1- EPS20W Disposable Photo Evidence Rule, Black on White, 2" (5cm), 100 pk.
- 1- EPS30B Blue Vinyl Photo Evidence Ruler, 6" (15cm), 10 pk.
- 1- EPS30FG Fluorescent Green Vinyl Photo Evidence Ruler, 6" (15cm), 10 pk.
- 1- EPS30FO Fluorescent Orange Vinyl Photo Evidence Ruler, 6" (15cm) 10 pk.
- 1- EPS30W White Vinyl Photo Evidence Ruler, 6" (15cm), 10 pk.
- 1- MR400 White Magnetic Evidence Scale, 6" (15cm), 10 pk.
- 1- MR401 Gray Magnetic Evidence Scale, 6" (15cm), 10 pk.
- 1- MR403 Black Magnetic Evidence Scale, 6" (15cm), 10 pk.
- 1- MR500 Photo Evidence Rule, Black on Gray, 2" (5cm), 10 pk.
- 1- MR501 Photo Evidence Rule, White on Black, 2" (5cm), 10 pk.
- 1- MR502 Photo Evidence Rule, Black on White, 2" (5cm), 10 pk.
- 1- PPS100 Reference Evidence Tape w/0-12" (0-30cm) repeat, 1" x 30 ft. (2.5cm x 9m)
- 1- PPS101 Jumbo Reference Evidence Tape w/12" (30cm) repeat, 1.25" x 30 ft. (3.2cm x 9m)
- 1- PPS200 Adhesive Backed Photo Evidence Scale for 35mm Photography w/20mm repeat, roll of 150
- 1- PPS201 Photograph Measure/Identifier Numbers w/0-4cm scale
- 1- PPS202 Photograph Measure/Identifier Numbers w/0-2cm scale
- 1- PPS300 Evidential Photography Scales, 10cm, 10 pk.
- 1- PPS301 Evidential Photography Scales, 5cm, 10 pk.
- 1- PPS400 White Photo Evidence Scales, 10 pk.
- 1- PPS401 Gray Photo Evidence Scales, 10 pk.
- 1- PPS402 Blue Photo Evidence Scales, 10 pk.
- 1- PPS403 Black Photo Evidence Scales, 10 pk.
- 1- PPS404 Transparent Photo Evidence Scales, 10 pk.
- 1- PPS500 Adhesive Backed Photo Evidence Scales, White on Black, 2" (5cm), 50 pk.
- 1- PPS501 Adhesive Backed Photo Evidence Scales, Black on Gray, 2" (5cm), 50 pk.
- 1- PPS502 Adhesive Backed Photo Evidence Scales, Black on White, 2" (5cm), 50 pk.
- 1- PPS503 Adhesive Backed Photo Evidence Scale w/2" and 50mm repeat, roll of 150
- 1- PPS6000 Set of 2 Reversible Scales in Macrography Photography (1 ea. PPS600 & PPS601)
- 1- PPS703 Big Numeral Reference Scales, 2" (6cm), 12 pk.
- 1- PPS704 Big Numeral Reference Scales, 6" (16cm), 12 pk.
- 1- PPS705 Big Numeral Reference Scales, 12" (32cm), 12 pk.
- 1- PPS800 Forensic Scale, Black on White, 105mm x 105mm
- 1- PPS801 Forensic Scale, Black on White, 4.125" x 4.125"
- 1- PPS800IF Forensic Scale, Fluorescent Orange, 4.125" x 4.125", 5 pk.
- 1- PPS800CF Forensic Scale, Fluorescent Green, 105mm x 105mm, 5 pk.
- 1- MMSK1000C High-impact copolymer carrying case w/handle; Dimensions: 18" x 13" x 9" (45.7cm x 33cm x 22.9cm); Weight: 8.8 lbs. (4kg)

CATALOG NO.	DESCRIPTION	PRICE
MMSK1000	Master Measuring Scales Kit	

Evidence Measuring & Marking Kits

PDK200 CONTENTS:

- 1- PEN15V Photo Evidence Numbers, 1-15
- 1- EFR100 Photo Evidence Ruler, Folding
- 1- SK900 Tape Measure 100 ft. (30m)
- 1- PNB1100 Photo Numbers Booklet, Lg., Adhesive
- 1- PNB5100 Photo Numbers Booklet, Sm., Adhesive
- 1- PPS101 Cont. Reference Scale, Lg. Number
- 2- PPS800 Forensic Black on White Scales
- 1- PPS400 Photo Rulers, White w/Black, 10 ea.
- 1- PPS401 Photo Rulers, Gray w/Black, 10 ea.
- 1- PPS402 Photo Rulers, Blue w/White, 10 ea.
- 1- PPS403 Photo Rulers, Black w/White, 10 ea.
- 1- PPS100 Cont. Reference Tape Evidence Scale
- 1- PAB100 Photo Arrows Booklet, Adhesive
- 1- PPS200 20mm Rules, 150/Roll
- 1- PPS503 Scales, White w/Black, 1" x 2.25"
(2.5cm x 5.7cm), 150/roll
- 1- KCP1141 Retractable Measuring Tape
- 1- KCP224 Molded Polypropylene Carrying Case;
Dimensions: 10.375" x 4.625" x 1.6875" (26.3cm x
11.7cm x 4.3cm)
- 1- PDK2001 Molded, Copolymer Carrying Case with
Molded Plastic Inserts: Dimensions: 16.375" x
8.625" x 7"
(41.6cm x 21.9cm x 17.8cm);
Weight: 7.4 lbs. (3.4kg)

PDK300 CONTENTS:

- 1- PEN15V Photo Evidence Numbers, 1-15
- 1- PEN1650V Photo Evidence Numbers, 16-50
- 1- PIC001 Photo Identifier Cards, Large
- 1- EFR100 Photo Evidence Ruler, Folding
- 1- PDUP01 Photo Direction Orientator, Up Arrow
- 1- PDDOWN02 Photo Direction Orientator, Down Arrow
- 1- PDRLO3 Photo Direction Orientator, Set w/1 Left Arrow and 1 Right Arrow
- 1- PDN04 Photo Direction Orientator, North Arrow
- 1- SK900 Tape Measure Metric/Standard, 100 ft. (30m)
- 1- PNBL100 Lg. Numbers Booklet, Adhesive
- 1- PNBS100 Sm. Numbers Booklet, Adhesive
- 1- PPS101 Cont. Reference Scale, Lg. Number
- 2- PPS800 Forensic Black on White Scales
- 1- PPS400 Photo Rulers, White w/Black Printing, 10 ea.
- 1- PPS401 Photog Rulers, Gray w/Black Printing, 10 ea.
- 1- PPS402 Photo Rulers, Blue w/White Printing, 10 ea.
- 1- PPS403 Photo Rulers, Black w/White Printing, 10 ea.
- 1- PPS100 Cont. Tape Reference Evidence Scale
- 1- PAB100 Photo Arrows Booklet, Adhesive
- 1- PPS200 20mm Rules, 150/roll
- 1- PPS503 Scales, White w/Black Printing, 1" x 2.25" (2.5cm x 5.7cm), 150/roll
- 1- KCP1141 Retractable Measuring Tape
- 1- KCP224 Molded Polypropylene Case;
Dimensions: 10.375" x 4.625" x 1.6875" (26.3cm x 11.7cm x 4.3cm)
- 1- PDK3002 Molded, Copolymer Inner Case w/Molded Plastic Inserts;
Dimensions: 12.125" x 7.25" x 4.5" (30.8cm x 18.4cm x 11.4cm)
- 1- PDK3001 Molded, Copolymer Carrying Case w/Molded Plastic Inserts;
Dimensions: 19" x 11.5" x 10.5" (48.3cm x 29.2cm x 26.7cm);
Weight: 15.3 lbs. (6.9kg)

STANDARD PHOTO DOCUMENTATION KIT

The Standard Photograph Documentation Kit is designed to meet crime scene photographic documentation needs of a medium sized department.



CATALOG NO.	DESCRIPTION	PRICE
PDK200	Standard Photo Documentation Kit	

COMPREHENSIVE PHOTO DOCUMENTATION KIT

The Comprehensive Photograph Documentation Kit is designed to meet crime scene photographic documentation needs of a large department.



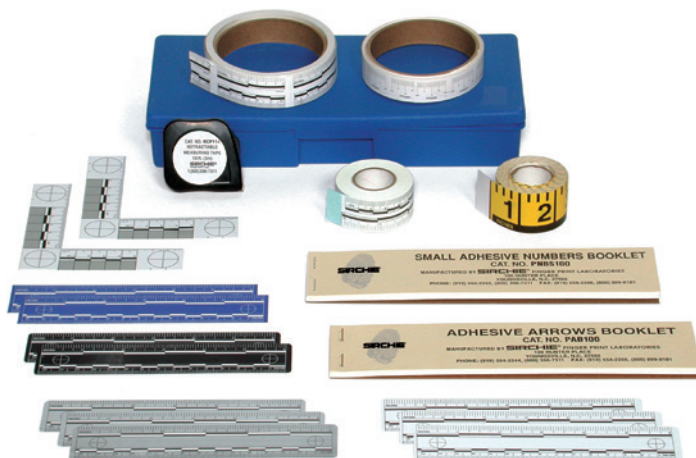
CATALOG NO.	DESCRIPTION	PRICE
PDK300	Comprehensive Photo Kit	

Evidence Measuring & Marking Kits

Crime Scene Documentation/Photography

MINI PHOTO DOCUMENTATION KIT

SIRCHIE®'s Mini Photo Documentation Kit is designed to meet specific crime scene photographic documentation needs of a small department.



PDK100 CONTENTS:

- 1- PNB100 Photo Numbers Booklet, Sm., Adhesive
- 1- PPS101 Cont. Reference Scale, Lg. Number
- 2- PPS800 Forensic Black on White Scales
- 1- PPS400 Photo Rulers, White w/Black, 10 ea.
- 1- PPS401 Photo Rulers, Gray w/Black, 10 ea.
- 1- PPS402 Photo Rulers, Blue w/White, 10 ea.
- 1- PPS403 Photo Rulers, Black w/White, 10 ea.
- 1- PPS100 Cont. Tape Reference Evidence Scale
- 1- PAB100 Photo Arrows Booklet, Adhesive
- 1- PPS200 20mm Rules, 150/Roll
- 1- PPS503 Scales, White w/Black, 1" x 2.25" (2.5cm x 5.7cm), 150/roll
- 1- KCP1141 Retractable Measuring Tape
- 1- KCP224 Molded Polypropylene Carrying Case; Dimensions: 10.375" x 4.625" x 1.6875" (26.3cm x 11.7cm x 4.3cm); Weight: 1.15 lbs. (.5kg)

CATALOG NO.	DESCRIPTION	PRICE
PDK100	Mini Photo Documentation Kit	

CRIME SCENE PHOTO MARKER KIT

Make it easy to mark evidence that needs to be photographed with this photo marker kit. When potential evidence is found, use one of these sturdy metal stands to mark the spot. Made from lightweight aluminum, the stands feature an adjustable height from 14" to 48" tall. Place one of the highly-visible black-and-white number placards in the stand's built-in placard holder and evidence will be easy to relocate for photography and further investigation.



Crime Scene Photo Marker Kit in use.

PMK1000 CONTENTS:

- 4- PMB68 Photo Marker Boards 6" x 8" (15.2cm x 20.3cm)
- 1- PM11 Photo Marker Black
- 1- PME2 Photo Marker Eraser
- 2- PMC3 Photo Marker Connectors
- 12- PMP4 Photo Marker Pins
- 20- PMPH5 Placard Holders, Small
- 4- PMPH6 Placard Holders, Large
- 1- PMDP7 Direction Placards, 2" x 4" (5.1cm x 10.2cm) Black/White Reversible, 4 Arrow Indicators, 1 N. Indicator
- 1- PMDP8 Direction Placards, 4" x 6" (10.2cm x 15.2cm) Black/White Reversible, 4 Arrow Indicators, 1 N. Indicator
- 1- PMNM9 Number Placards, 4" x 4" (10.2cm x 10.2cm) Black/White Reversible, Numbers 1-48
- 1- PMNM10 Number Placards, 4" x 6" (10.2cm x 15.2cm) Black/White Reversible, Numbers 0-9
- 1- PMK1001 Molded Copolymer Carrying Case w/Lift Out Tray; Dimensions: 20.25" x 8.875" x 8.625" (51.4cm x 22.5cm x 21.9cm); Weight: 9.75 lbs. (4.4kg)

CATALOG NO.	DESCRIPTION	PRICE
PMK1000	Crime Scene Photo Marker Kit	

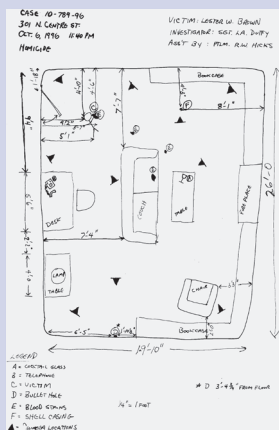
**SHOP
ONLINE**
www.sirchie.com



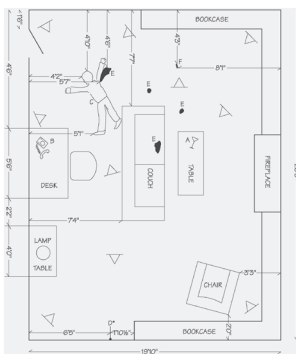
SKETCHES AT THE SCENE OF THE CRIME PLAY A VITAL ROLE IN THE INVESTIGATION.

The finished sketch gives a precise and permanent record of the evidence found at the scene. A photograph is a two-dimensional view of the scene and does not provide accurate information concerning distances between objects that are present at the scene. Photos cannot be clearly understood unless the measured distances between these points are known. A finished drawing or rough sketch of the scene is the most effective way of showing actual measurements and of identifying important items of evidence at the location of the scene. Sketches are separated into three classes:

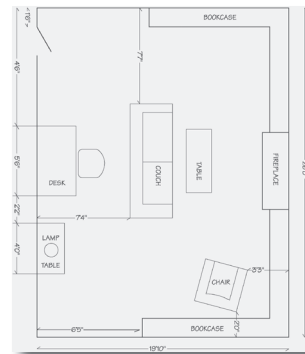
- 1. ROUGH SKETCH:** The rough sketch is prepared by the investigator at the scene—but not until all photography has been completed and before any evidence has been collected. The sketch does not have to be drawn to scale but should include exact measurements of the surroundings and the location of evidence in relation to the victim's location or other important evidence.
- 2. FINISHED SKETCH:** The finished sketch is a duplicate of the rough sketch prepared to scale by using layout templates and exact distances. When the finished sketch is completed, it should immediately be duplicated and forwarded to the proper authorities for safekeeping until the case is resolved.
- 3. SCALE DRAWING:** A scale drawing is used primarily for courtroom presentation. It may be drawn to any scale chosen. The drawing should include all measurements of the rooms, furniture, walls, etc., but not the location of the evidence that has been recovered. When the drawing has been completed, a clear plastic overlay can be attached showing the location of the evidence in the room where it was found.



Rough sketch



Finished sketch



Scale drawing

DK1 Contents:

- 1- TB100 Booklet, "Sketching & Detail Drawing of the Crime Scene"
- 1- 376 C-Thru Protractor
- 1- CSD11 Crime/Accident Scene Sketch Forms, 50 sheets
- 1- CSS11 Crime Scene Sketch Pad, with Forms, Symbols and Pre-drawn Diagrams
- 1- CST1 Crime Scene Template
- 1- KCP134 Mechanical Drafting Pencil
- 1- KCP216 Felt-Tip Marker, Medium Point, Black
- 1- TT1 Traffic Template
- 1- DK11 Vinyl Folder w/Internal Pockets

BASIC CRIME SCENE SKETCH KIT

This kit contains the basic components needed for crime/accident scene sketches at an economical price. All items are self-contained in a vinyl binder.



CATALOG NO.

DESCRIPTION

PRICE

DK1

Basic Crime Scene Sketch Kit

LATENT PRINT EVIDENCE TEMPLATE

The latent print evidence template features many of the objects from which latent prints may be lifted. A ruler is printed on the top edge of the template. It is made of green butryate plastic and measures 7 1/2" x 3 5/16". The items featured on this template are the perfect size for drawing on the LPW100 or LPB100 lifted print backing/sketch/record cards (see page 64).

CATALOG NO.	DESCRIPTION	PRICE
LPET1	Latent Print Evidence Template	

INTERIOR TEMPLATES

These templates are precision-made, feature unique designs, symbols and figures and may offer the most economical, time-saving way to solve an agency's special drawing needs. All templates are made of durable, long-lasting butryate plastic with a matte-finish on top and a press-polish bottom. The templates are .030" thick and feature a 1/4":1' scale. An 8" x 5 1/8" office plan template offers the most standard-sized office furniture and equipment. The 9 1/8" x 5 1/8" store layout template features the most standard-sized counters and tables. The 8 5/8" x 5 1/2" house furnishings template features house furnishings and appliances.

CATALOG NO.	DESCRIPTION	PRICE
710	Office Plan Template	
712	Store Layout Template	
714	House Furnishings Template	

TRAFFIC TEMPLATE

The **SIRCHIE**® traffic template measures 6 1/4" x 3 1/2" and is designed to make drawings of traffic accidents simple and neat. The template enables the user to draw left turn bays; standard and compact autos, station wagons, pickups and vans; cycles; people; trees and ponds; animals; farm tractors; trucks and buses; intersections; fences, rivers and creeks; points of impact and railroad crossings; traffic symbols; and curves.

CATALOG NO.	DESCRIPTION	PRICE
TT1	Traffic Template	

CRIME SCENE TEMPLATE

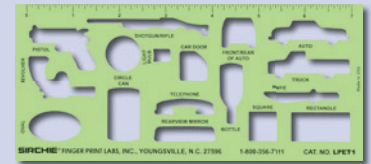
The **SIRCHIE** crime scene template, specially created for law enforcement, measures 6 1/2" x 3 1/4". It is designed to simplify the drawing of difficult objects found at the crime scene. The template features the copyrighted, segmented human body which permits drawing the human form in the exact position in which it was found. The crime scene template is on a quarter-inch scale (1/4" = 1'). There is a conventional 6" ruler along the right side. The bottom and left sides are marked in 1/4" increments. There are many variations for using this template.

CATALOG NO.	DESCRIPTION	PRICE
CST1	Crime Scene Template	

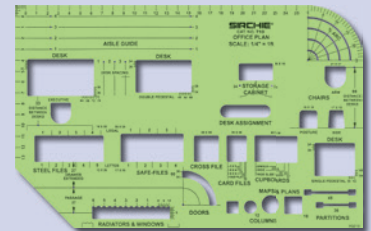
LAVATORY PLANNING TEMPLATE

This template provides an easy way to accurately hand-draw repetitive symbols and shapes. It features smooth, friction-free apertures that incorporate a .5mm pencil allowance. Also features the newest symbols for residential, institutional and commercial drawings. The scale is 1/4":1' and the template size is 5" x 9" x .030".

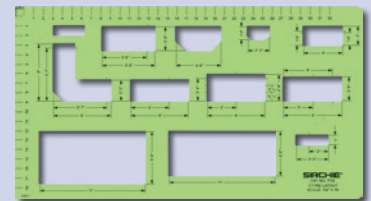
CATALOG NO.	DESCRIPTION	PRICE
11901	Lavatory Template	



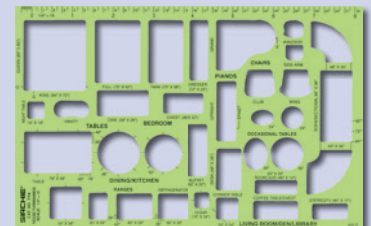
No. LPET1



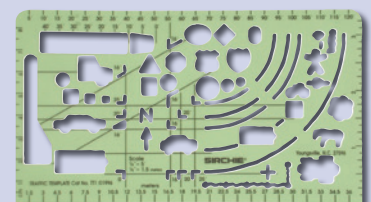
No. 710



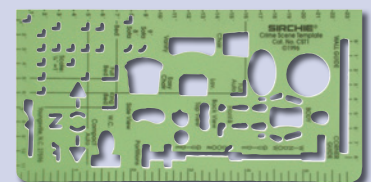
No. 712



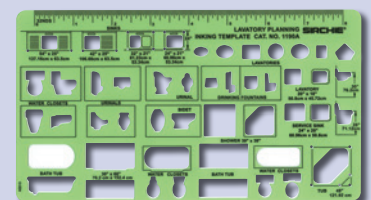
No. 714



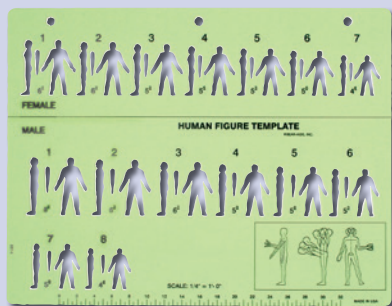
No. TT1



No. CST1



No. 11901



No. HFT1



HUMAN FIGURE TEMPLATE

The human figure template may be used whenever the drawing of a male or female is required. It features holes on the top for placing in a three-ring binder. A 30cm scale ruler is included on the bottom edge of the template. Figures are depicted in a variety of heights with both a front and profile view. A diagram printed on the template illustrates how it is possible to reposition the template during drawing to produce realistic and informative diagrams. Dimensions: 8 1/2" x 11" (21.6cm x 28cm) Scale: 1/4":1'

CATALOG NO.	DESCRIPTION	PRICE
HFT1	Human Figure Template	

PRECISION STEEL TAPE MEASURES

SIRCHIE®'s precision steel tape measures are quality tape measures which are housed in an impact-resistant, fluorescent orange ABS case. Their flexible steel blades are 3/8" wide and feature black and red markings on a yellow background. Each steel blade is covered with polycoat for a longer life. Tape measures come with a handy, folding handle designed to fit the hand comfortably while allowing rapid deployment and rewinding.

CATALOG NO.	DESCRIPTION	PRICE
SK800	Steel Tape Measure, manual (50 ft./15m)	
SK900	Steel Tape Measure, manual (100 ft./30m)	

TWO COMPARTMENT ALUMINUM CLIPBOARD

This 8 1/2" x 14" Clipboard is an essential piece of equipment for anyone taking information in the field. The clip holds paper and includes slide-on license holder.

- Lower compartment has 1" capacity and features a built-in pen tray
- Upper compartment provides an additional 7/16" of storage capacity
- Upper tray can be removed to create one large compartment

CATALOG NO.	DESCRIPTION	PRICE
CLIP100	Two Compartment Aluminum Clipboard	

ALL-WEATHER PEN

This pen writes in any weather and at any angle—even upside down! It can also write over water, grease and photographs as well as in extreme cold (-30° F) and extreme heat (+250° F).



CATALOG NO.	DESCRIPTION	PRICE
RRPEN	All-Weather Pen, Black	

ALL-WEATHER PAD

The special paper in this pad sheds water so it can be written on in any weather. Pad contains 100 pages (50 sheets). Sheets are printed with faint horizontal blue lines and are spiral bound with a Polydura cover.

CATALOG NO.	DESCRIPTION	PRICE
RRPAD	All-Weather Pad, 4" x 8", 100 page	

ALL-WEATHER NOTEBOOK

This notebook is made up of special paper that sheds water, enabling you to write in any weather. 84 pages (42 sheets) are spiral bound with a Polydura cover. Pages printed with blue horizontal lines with a faint 1/4" grid.

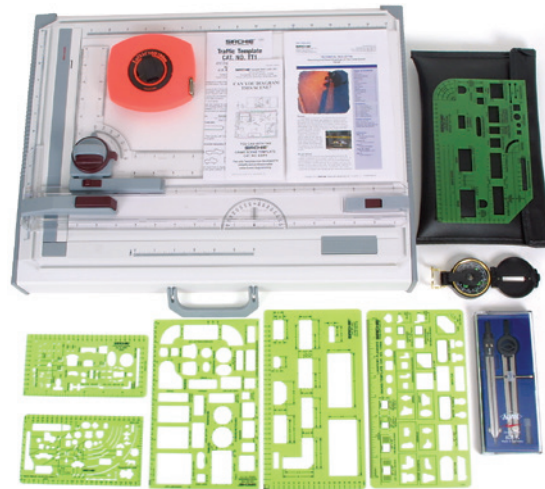
CATALOG NO.	DESCRIPTION	PRICE
RRNBK	All-Weather Notebook, 8 1/2" x 11", 84 page	

Crime Scene Sketch Kits

Crime Scene Documentation/Photography

PROFESSIONAL CRIME SCENE SKETCH KIT

This professional crime scene sketch kit is designed and outfitted with all the components for quick and professional crime scene sketching. A versatile drawing board allows for on-the-spot sketching, diagramming, and drafting. The kit accommodates media sizes up to 11" x 17".



CATALOG NO.	DESCRIPTION	PRICE
SK3000	Professional Crime Scene Sketch Kit	

MASTER CRIME SCENE SKETCH KIT

This is a complete crime scene sketch kit used by the most progressive police departments worldwide. All the necessary components for quick and professional crime scene sketching are housed in a fold-out briefcase for use in the field or squad room. It is an absolute must for the well-prepared investigator.



CATALOG NO.	DESCRIPTION	PRICE
SK1000	Master Crime Scene Sketch Kit	

SQUAD CAR SKETCH KIT

This is the perfect tool for accident and crime scene sketching. This compact kit contains the basic tools necessary for rough and finished sketches. Get economy without sacrificing quality.



CATALOG NO.	DESCRIPTION	PRICE
SK0001	Squad Car Sketch Kit	

SK3000 CONTENTS:

- 1- SK3002 Portable Drawing Board
- 1- SK3003 Graduated, Removable Straight Edge
- 1- SK3004 Protractor Drafting Head
- 1- SK3005 Reversible Feet (Set)
- 1- SK3006 Supplies Storage Pouch
- 10- SK3007 Sketching Paper, 11" x 17"
- 1- SK3008 Neck Strap
- 1- CST1 Crime Scene Template
- 1- TT1 Traffic Template
- 1- 1190I Lavatory Planning Template
- 1- 714 House Furnishings Template
- 1- 712 Store Layout Template
- 1- 710 Office Plan Template
- 1- KCP135 Universal Compass
- 1- SK900 100ft/30m Steel Rule
- 1- KCP136 Set of Professional Drawing Instruments
- 1- TB100 "Sketching and Detail Drawing of the Crime Scene" Booklet
- 1- SK3001 Vinyl Carrying Case with Handle

SK1000 CONTENTS:

- 1- KCP130 Pad of Graph Paper, 50 Sheets
- 1- KCP131 12" (30cm) Plastic Ruler
- 1- KCP134 Mechanical Sketch Pencil
- 1- TT1 Traffic Template
- 1- 1190i Lavatory Planning Template
- 1- 714 House Furnishings Template
- 1- 712 Store Layout Template
- 1- 710 Office Plan Template
- 1- KCP135 Universal Compass
- 1- SK800 50 ft. (15m) Steel Rule
- 1- KCP136 Set of Professional Drawing Instruments
- 1- KCP132 30°/60°/90° Clear Plastic Triangle
- 1- KCP133 45°/45°/90° Clear Plastic Triangle
- 1- TB100 "Sketching and Detail Drawings of the Crime Scene" Booklet
- 1- SK1000C Vinyl, Leather-Finish, Briefcase-Type Carrying Case: Dimensions: 13.5" x 12.5" x 2.25" (34.3cm x 31.8cm x 5.7cm); Weight: 3.56 lbs. (1.6kg)

SK0001 CONTENTS:

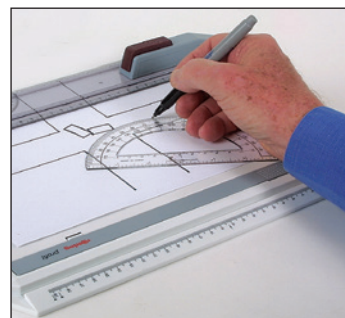
- 1- KCP130 Pad of Graph Paper, 50 Sheets
- 1- KCP131 12" (30cm) Plastic Ruler
- 1- 712 Store Layout Template
- 1- 710 Office Plan Template
- 1- KCP132 30°/60°/90° Clear Plastic Triangle
- 1- KCP133 45°/45°/90° Clear Plastic Triangle
- 1- 1190i Lavatory Planning Template
- 1- 714 House Furnishings Template
- 1- KCP134 Mechanical Sketch Pencil
- 1- TT1 Traffic Template
- 1- TB100 "Sketching and Detail Drawings of the Crime Scene" Booklet
- 1- SK0001C Vinyl, Leather-Finish Clipboard Folder; Dimensions: 9.5" x 12.75" x .5" (24.1cm x 32.4cm x 1.3cm); Weight: 1.52 lbs. (689g)

TIK100 CONTENTS:

- 1- TIK15 Photo Marker Placards, 5 Arrow Indicators, Numbers 0-9, 3" x 4.75" (7.6cm x 12.1cm) B&W Reversible
- 1- TIK90 Labels, 2" x 1.625" (5.1cm x 4.1cm), 90 ea.
- 25- ZWB011 Zip-Top Evidence Bags, 4" x 6" x .004" (10.2cm x 15.2cm x 4 mil) w/write-on block
- 25- KCP128 Zip-Top Poly Bag 3" x 5" x .002" (7.6cm x 12.7cm x 2 mil) w/write-on block
- 25- KCP266 Poly Bag, 18" x 24" x .002" (45.7cm x 61cm x 2 mil)
- 1- KCP135 Compass
- 5- KCP267 Tube, 12mm x 75mm, 5ml w/skirted cap
- 1- KCP131 Ruler, 12" (30cm) plastic
- 1- KCP133 Triangle, 45 degree scholastic
- 1- 376 C-Thru Protractor
- 2- KCP134 Drafting pencil, mechanical
- 1- KCP130 Pad, Graph paper 8.5" x 11" (21.6cm x 27.9cm), .25" grid, 50 sheets
- 1- KCP268 Cotton Towel, 12" x 12" (30.5cm x 30.5cm)
- 1- KCP269 Work Gloves, Leather Palm, Pair
- 1- SF0072 Disposable Tyvek® jumpsuit, Lg.
- 1- PL1000 Flashlight, Black, 2x D cell
- 2- KCP235 Battery, D-cell alkaline
- 1- KCP270 Drawing board, A4 size (21cm x 29.7cm)
- 1- KCP271 Pencil, Wood, Black #2 HB
- 1- KCP272 Pencil, Wood, Green
- 1- KCP273 Pencil, Wood, Yellow
- 1- KCP274 Pencil, Wood, Red
- 1- KCP275 Marking Crayon, Red
- 1- KCP276 Marking Crayon, White
- 1- KCP277 Marking Crayon, Yellow
- 1- KCP278 Rule, Universal Folding Wood, 6.5 ft. (2m)
- 1- KCP279 Screwdriver Set, 4-PC, 2-Slotted, 2-Phillips
- 1- KCP280 Pliers, Linemans Sidecutting, 7"L (17.8cm), 1.375" (3.5cm) Jaw
- 1- KCP281 Screwdriver, 5-in-1, 3/16" & 5/16" slotted, #1 & #2 Phillips, 5/16" Nutdriver
- 1- JC7538 Magnifier, rectangular illuminated, 4X
- 2- KCP230 Battery, AA cell alkaline 1.5V
- 1- KCP309 Knife, 7 function pocket
- 1- KCP255 Glass cutter
- 1- KCP289 Tweezers 4.5" (11.4cm)nickel plated, sharp points
- 1- KCP282 Pencil Sharpener
- 1- KCP283 Marker felt tip extra fine black
- 1- 125MD MegaWand™ Magnetic Tool
- 1- SK900 Precision Steel Tape Measure, 100 ft. (30m)
- 2- KCP284 Bottle, 1 oz. (39ml) amber glass BRNM 20/400
- 2- KCP285 Dropper, 20/400 for 1 oz. (39ml) amber bottles
- 1- WHC4 Waterless Hand Cleaner, 4 oz. (118ml)
- 6- KCP286 Box, Clear plastic hinged, 2.125" x 1.625" x .625" (5.4cm x 4.1cm x 1.6cm)
- 5- TIK02 Foldable Tripods
- 5- TIK01 Tripod Extensions, 7.75" (19.7cm)
- 1- TIK100C Samsonite® Carrying Case w/Combination Lock, Machined Internal Component Pad; Dimensions: 18.5" x 15.5" x 5.5"(47cm x 39.4cm x 14cm); Weight: 19.5 lbs. (8.8kg)

TRAFFIC INVESTIGATION KIT

Some of the more than 150 individual items contained in this kit are: devices to assist in preparing the initial sketch; precision built accident scene drawing board (see inset); measuring, marking and drawing devices; placards to mark critical evidence for photography; evidence collection containers (solid and liquid); an assortment of hand tools; flashlight; magnifier; magnetic compass and much more. The kit also includes work gloves, waterless hand cleaner, and a disposable jumpsuit.



No. KCP270 precision built accident scene drawing board.

CATALOG NO.

DESCRIPTION

PRICE

TIK100

Traffic Investigation Kit

DIGITAL MEASUREMENT KIT

The DIGMK300 Digital Measurement Kit is a versatile tool kit designed to assist the investigator at the crime scene with photography, laser trajectory, blood spatter, and other relevant field work. The three measuring devices and accessories make crime scene investigations easier, quicker, and more accurate.



DIGMK300 KIT CONTENTS:

- 1- DMLASER Laser Projector
- 1- DMRANGE Range Finder
- 1- DMANGLE Angle Finder w/Carrying Case
- 20- DMTARGET Laser Targets, 2" x 2"
- 1- PEN15VS Short Plastic Photo Evidence Numbers (1-15)
- 1- PPS401 Vinyl Photo Evidence Scales, 10 ea.
- 1- PPS202 Photographic Identifier Numbers, 10/pack
- 1- Carrying Bag Black Nylon, Dimensions: 6" x 9" x 10" (15.24cm x 22.86cm x 25.4cm); Weight: 3.457 lbs. (1.568 kg.)

CATALOG NO.	DESCRIPTION	PRICE
DIGMK300	Digital Measurement Kit	

LASER PROJECTOR

Use DMLASER Laser Projector in place of a laser pointer. This versatile tool's features include built in leveling function, leveling feet, and magnetic base for easy attachment to tripods or metal cabinetry. You can use this as a plumb bob with circular plumb vial. Accessories include a beam spreader to create a laser chalk line across walls and other surfaces and mini laser tripod.



DMLASER SPECIFICATIONS:

- Working Range: Up to 50' interior visible range
- Working Environment: Designed for Interior use
- Vial Sensitivity: Level +/- 20 minutes – Plumb +/- 30 minutes
- Line Accuracy: +/- 1/4 @ 50'
- Leveling Type: Manual, with base adjusting screw
- Level Beam Accuracy: $\pm 1/4$ -in @ 50-ft (6.3mm at 16.5m) in dot mode
- Laser Diode: Class 2M/3R (>1mW), 635nm to 670nm. This product complies with 21 CFR 1040.10 and 1040.11
- Laser Class : Class 2M/3R
- Batteries: 3 "AA" Alkaline (included)
- Battery Life: Up to 100 hours intermittent use

CATALOG NO.	DESCRIPTION	PRICE
DMLASER	Laser Projector	

DIGITAL ANGLE FINDER

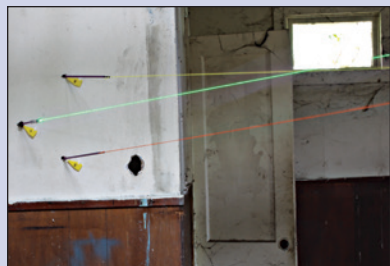
Use DMANGLE Digital Angle Finder instead of a protractor for angle measurements accurate to $\pm 0.2^\circ$. This provides ease of use and accuracy for the investigator in the field.



DMANGLE SPECIFICATIONS:

- Resolution: 0.05°
- Repeatability: .01°
- Accuracy: $\pm 0.2^\circ$
- Battery: Standard 9 volt

CATALOG NO.	DESCRIPTION	PRICE
DMANGLE	Digital Angle Finder	



Use the penetration rods, markers, strings, and laser to show angle of entry, trajectory, and bullet path. Green laser, Yellow and orange string shown



Penetration rod, SirchMark™ marker held by Stikki Dot identifying location and angle of entry



Measure angle of entry with the No. DRP10 digital protractor



Measure trajectory angle with DMANGLE digital angle finder and laser mounted on tripod using the tripod adapter

ADVANCED LASER TRAJECTORY FINDER KIT

Whenever a firearm is discharged, it leaves evidence behind including cartridges, gunshot residue, and physical artifacts where the projectile passes through or embeds itself in surrounding objects. Trajectory analysis uses these artifacts to reconstruct, through observation and measurement, how a shooting most likely occurred, and determine the originating location of the shooter.



The new LTF200 Advanced Laser Trajectory Kit incorporates advances in lasers and digital measurement to provide the officer with the most accurate measurement and tools available today. This kit allows a single investigator to do a detailed ballistics or shooting reconstruction.

LTF200 includes four anodized aluminum penetrating rods, centering cones, and grommets. These are placed in holes created by the projectiles, allowing the investigator to photograph the trajectory, measure the various angles of entry, and also attach strings or lasers to further reconstruct the path of the bullet. In addition, there are four more rods that can be used to extend the penetration rods, allowing the rods to be passed through hard to string areas, such as car seats. The centering cones are held in place by rubber grommets, which are easy to install.

LTF200 contains two digital angle finders, the DMANGLE, which with an adapter, can be placed directly on penetration rods to determine the angle of trajectory, and the DRP10, a digital protractor that measures any angle by simply placing the bottom edge at the measurement point, and opening the other leg to the point of measurement. The digital read out is accurate to 0.2 degrees.

Finally, for documenting the trajectory path beyond the rods, the kit provides for two methods, stringing and laser trajectory. For stringing, LTF200 includes elastic string, which when tightened does not sag like conventional string. Included are 6 spools (2 bright yellow, 2 bright orange, 1 neon green, and 1 highly reflective silver). For laser trajectory, LTF200 contains two lasers, a red laser and a new 5mw green laser. The lasers can be attached to the trajectory rods or placed on an included tripod mount to project the path of the bullet.

The kit also includes marking cones and triangles for identifying shell casings or other evidence locations, adhesive decals printed with a 2 cm scale and a blank space for custom manual labeling of bullet holes, a tape measure, and reusable Stikki-Dots® and Stikki-Clips® that can be used to attach markers and string to any smooth surface. This kit is contained in an easy to carry and easy to deploy 5.11 Tactical Rush 24 backpack, and contains everything needed to execute a sound ballistics or shooting reconstruction.



LTF200 CONTENTS:

- 1- DMANGLE Digital Angle Finder
- 1- DRP10 Digital Protractor
- 1- Angle Bracket
- 1- Protractor Laser Mount
- 1- Sunpak Model Tripod
- 1- Tripod Adapter
- 1- Tripod Extension Rod
- 2- Mounting Magnets
- 1- Counter balance bottle, 32 oz.
- 1- LTF201 Trajectory Rod Set (4 Penetrating, 4 Photography)
- 1- LTF200EC Elastic Cord Set, 6 Spools (LTF200Y - 2 Yellow; LTF200N - 2 Orange; LTF200S - 1 Reflective Silver; LTF200G - 1 Fluorescent Green)
- 1- LTF208 Centering Cone Set, 8 Cones & Grommets
- 4- Threading Tips
- 1- LTF102 Red Laser 5mW
- 1- LTF200GL Green Laser 5mW
- 1- Acrylic Photo Card
- 1- SEM20N SIRCHMARK™ Orange Acrylic Evidence Marker, Bag of 20
- 1- SEM20Y SIRCHMARK™ Yellow Acrylic Evidence Marker, Bag of 20
- 1- SKC20 StikkiCLIPS® White Plastic, Pack of 20
- 1- SKC50 StikkiDOTS® Reusable Wax Dots, Pack of 50
- 1- PEN15VS Short Plastic Photo Numbers (1-15)
- 1- PPS401 Vinyl Photo Evidence Scale, Gray, 10 each
- 1- PIM700 Photo ID Markers, Blank w/scale, 50 x 4 sheets
- 1- PNBR100 Label Circles, A-D, 0-9, 4 sheets, 11 ea. label
- 1- SK900 Steel Tape Measure, Manual (100ft./30m)
- 1- Marker Sharpie® Fine Point Black
- 1- LTF200C 5.11 RUSH 24 Backpack

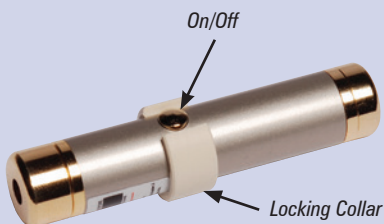
**SHOP
ONLINE**
www.sirchie.com

CATALOG NO.	DESCRIPTION	PRICE
LTF200	Advanced Laser Trajectory Finder Kit	

Laser projection of bullet trajectories is one of the latest innovations in crime scene investigation. **SIRCHIE®**'s Laser Trajectory Finder Kits contain all of the tools necessary to provide vital information as to the flight of the bullet and, ultimately, the location of its source.

LTF100 CONTENTS:

- 1- LTF101 Ballistic Angle Finder
- 1- LTF102 Ballistic Laser Pointer Class IIIa w/batteries (Type L1154)
- 1- LTF103 Bullet Penetration Rods, set of 4
- 1- LTF104 Multi-Colored Photographic Rods, set of 6
- 1- LTF105 Rod Connectors, set of 2
- 1- LTF106 Bullet Tips, set of 2
- 1- LTF107 Stringing Tips, set of 2
- 1- LTF108 Centering Cones, set of 4
- 1- LTF109 O-Rings, set of 4
- 1- LTF110 Universal Tripod Mount
- 1- LTF111 Roll of Colored Trajectory String, 250 ft. (76m)
- 1- LTF100C High-Impact Carrying Case w/Custom Foam Insert; Dimensions: 19" x 14" x 4.75" (43.8cm x 35.6cm x 12cm); Weight: 5.75 lbs. (2.6kg)



LASER POINTER: Light the path of trajectory with the Ballistic Laser Pointer. Attach the laser to the Universal Tripod Mount or to the end of a Penetration Rod.



No. LTF112RS 22 Caliber Rod Set

FRK16 CONTENTS:

- 1- FRK001 Multi-Colored Acrylic Forensic Rods, set of 16
- 1- FRK002 Centering Cones, set of 16
- 1- FRK16C Forensic Rod container

FRK16 SPECIFICATIONS:

Weight: 1.2 lbs
Dimensions: 3" Diameter x 18-1/2" lg

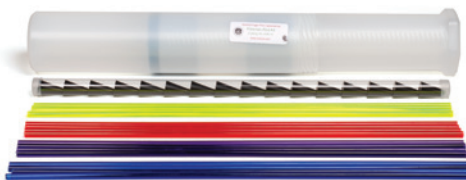
LASER TRAJECTORY FINDER KIT

Using a powerful, yet compact Class IIIa laser, this Laser Trajectory Finder Kit allows the investigator to visualize a bullet's trajectory. The Ballistic Laser Pointer may be attached to a Penetration Rod inserted into a bullet hole, or it may be mounted on a tripod and directed into the bullet hole along the bullet's actual path. The LTF101 Ballistic Angle Finder is used to determine the angle of trajectory. It can be hand held or mounted on a tripod using the heavy gauge steel Universal Tripod Mount via its built-in magnetic base.

The kit includes Centering Cones for use on either the Penetration or Multi-Colored Photographic Rods to permit a secure fit when rods are inserted into various sized entry and exit bullet holes. A reusable roll of Colored Trajectory String is included when longer distances are involved.



No. LTF100 Laser Trajectory Kit



No. FRK16 Forensic Rod Kit



BALLISTIC ANGLE FINDER: Determine the angle of trajectory from the vertical plane using the Finder's built-in magnet and the Universal Tripod Mount.



No. LTF100S Photo Laser Smoke is sold separately

CATALOG NO.	DESCRIPTION	PRICE
LTF100	Laser Trajectory Kit	
LTF100S	Photo Laser Smoke (aersol can), 8 oz. (236ml)	
BM6009	Heavy-Duty Tripod	
LTF112RS	22 Caliber Rod Set, 4 each	
LTF113	Reflective Yarn, 275ft. (84m)	
LTF102	Extra Laser Pointer w/locking collar	
FRK16	Forensic Rod Kit	

Evidence Photography Kits

Crime Scene Documentation/Photography

BASIC PHOTOGRAPHY KIT

This kit includes a basic point and shoot camera with 3X optical zoom, built-in flash and uses AA batteries. A variety of forensic scales are provided for proper documentation of evidence. Kit comes in a rugged nylon carry bag.



CATALOG NO.	DESCRIPTION	PRICE
CAM100	Basic Photography kit	

ADVANCED PHOTOGRAPHY KIT

This kit includes an advanced compact digital camera with optical zoom, built-in flash, LCD screen and ability to shoot 720P HD video. A variety of forensic scales are provided for proper documentation of evidence. Kit comes in a rugged nylon carry bag.



CATALOG NO.	DESCRIPTION	PRICE
CAM200	Advanced Photography kit	

PROFESSIONAL PHOTOGRAPHY KIT

SIRCHIE® has put together the latest in technology to provide the CSI with all the photographic equipment they'll need to properly and efficiently process a scene. The kit includes a Nikon 16.2 MP DX DSLR, an all purpose Nikon 18-105 lens, Nikon 60mm Macro lens, remote shutter release and Nikon Speedlight with TTL cord, all in a rugged nylon camera bag. This kit was designed to cover all the visible light applications a CSI may encounter, from overall scene capture to life sized macrophotography. *The Speedlight with TTL cord enables the photographer to use the flash on or off the camera for oblique and other unique lighting situations.* The ability to record HD video at 1080P is a bonus. This kit is everything you need to photograph the evidence. Kit comes in a rugged nylon carry bag. *This kit is used in our onsite Crime Scene Photography Class.*



CATALOG NO.	DESCRIPTION	PRICE
CAM300	Professional Photography kit	

RUGGED PHOTOGRAPHY KIT

This kit includes a 14-Megapixel waterproof and shockproof camera with 5X optical zoom, built-in flash, 2.7" LCD screen and ability to shoot 720P HD video. A variety of forensic scales are provided for proper documentation of evidence. Kit comes in a rugged nylon carry bag.



CATALOG NO.	DESCRIPTION	PRICE
CAM400	Rugged Photography kit	

CAM100 KIT CONTENTS:

- 1- 10MP Point & Shoot Camera
- 1- PPS401 Vinyl Evidence Ruler, Gray, 10 ea.
- 1- PPS6000 Reversible Photo Evidence Scales, 2 ea.
- 1- PPS101 Jumbo Reference Evidence Rule Tape, 1" x 30' roll
- 1- PPS800 Forensic Scale, Black on White, 105mm x 105mm
- 1- TLK200B Black Nylon Kit Bag

CAM200 KIT CONTENTS:

- 1- 10MP Camera (shoots 720P HD video)
- 1- PPS401 Vinyl Evidence Ruler, Gray, 10 ea.
- 1- PPS6000 Reversible Photo Evidence Scales, 2 ea.
- 1- PPS101 Jumbo Reference Evidence Rule Tape, 1" x 30' roll
- 1- PPS800EM Metal Forensic Scale, 4 1/8" x 4 1/8"
- 1- PPS800 Forensic Scale, Black on White, 105mm x 105mm
- 1- PPS503 Photo Evidence Scales, 150/roll
- 1- EFR200 Tri-Fold Scale, 36"
- 1- TLK200B Black Nylon Kit Bag

CAM300 KIT CONTENTS:

- 1- Nikon D7000 16MP DSLR Camera Body (shoots 1080P HD video)
- 1- Nikon 18mm-105mm Auto-Focus zoom lens
- 1- Nikon 60mm Micro Auto-Focus lens
- 1- Nikon SB900 Speedlight
- 1- Nikon MCDC2 Remote
- 1- PPS401 Vinyl Evidence Ruler, Gray, 10 ea.
- 1- PPS6000 Reversible Photo Evidence Scales, 2 ea.
- 1- PPS101 Jumbo Reference Evidence Rule Tape, 1" x 30' roll
- 1- PPS503 Photo Evidence Scales, 150/roll
- 1- EFR200 Tri-Fold Scale, 36"
- 1- PPS800EM Metal Forensic Scale, 4 1/8" x 4 1/8"
- 1- PPS800 Forensic Scale, Black on White, 105mm x 105mm
- 1- TLK200B Black Nylon Kit Bag

CAM400 KIT CONTENTS:

- 1- 14MP waterproof/shockproof camera (shoots 720P HD video)
- 1- PPS401 Vinyl Evidence Ruler, Gray, 10 ea.
- 1- PPS6000 Reversible Photo Evidence Scales, 2 ea.
- 1- PPS101 Jumbo Reference Evidence Rule Tape, 1" x 30' roll
- 1- PPS800EM Metal Forensic Scale, 4 1/8" x 4 1/8"
- 1- PPS800 Forensic Scale, Black on White, 105mm x 105mm
- 1- PPS503 Photo Evidence Scales, 150/roll
- 1- EFR200 Tri-Fold Scale, 36"
- 1- TLK200B Black Nylon Kit Bag



The flexible arms at all four corners of the base and the two on the camera mount can be removed—allowing for a variety of configurations.



Add any of the six included Forensic Lights as needed—bending the flexible arms to precisely position them.



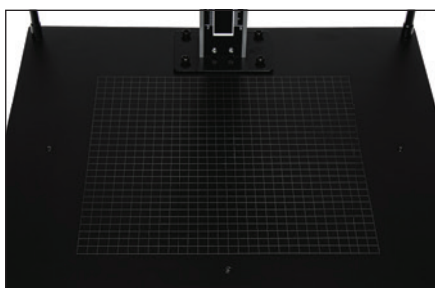
Quickly and precisely increase or decrease the lens-to-subject distance using the column height adjustment. (Camera not included)

SIRCHSTAND™ FORENSIC PHOTOGRAPHY STAND

The SirchStand™ is a high quality, versatile, and portable copy stand for forensic photography. It features an easy to adjust column, allowing one-hand operation to raise and lower the camera. The base is magnetic, finished in a matte black, and etched with a 1 cm square grid for scaling. The stand also features flexible arms both on the base and on the camera mount where **SIRCHIE®**'s TMX LED forensic lights (white, UV 395nm and 455nm blue) can be used for oblique light photography, or with camera filters for photographing bodily fluid stains, enhanced cyanoacrylate fuming results, or fluorescent powder developed latent prints. The unit is sturdy, able to support most mid-range to large cameras, and guarantee a 90 degree angle to the object. Even with all of these robust features, the stand is very mobile. It weighs 22 lb., and has an easy to remove column, so it can be taken directly to the crime scene or to the Medical Examiner's office. SirchStand™ is the copy stand built with the forensic photographer in mind, making forensic photography that much easier.



The SirchStand™ camera mount is compatible with most DSLR cameras (1/4" diameter, 20 thread count) (camera not included)

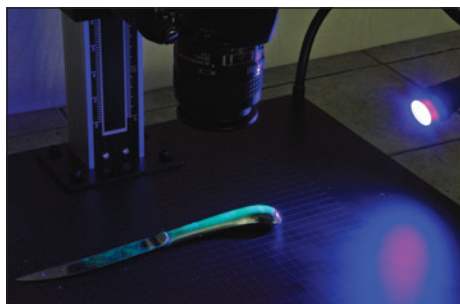


The matte black base is engraved with a 28cm x 30cm grid to facilitate proper evidence placement.

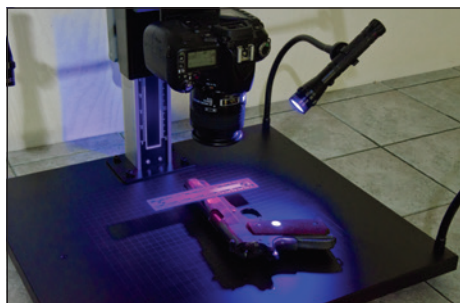
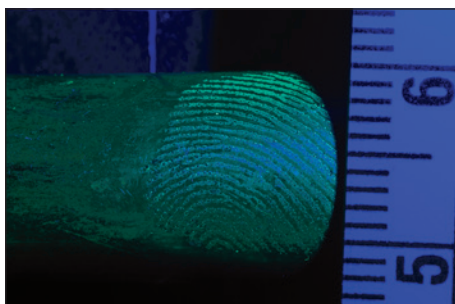


Hold two dimensional evidence flat using the four included magnets.

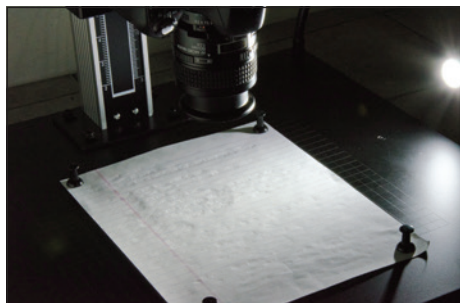
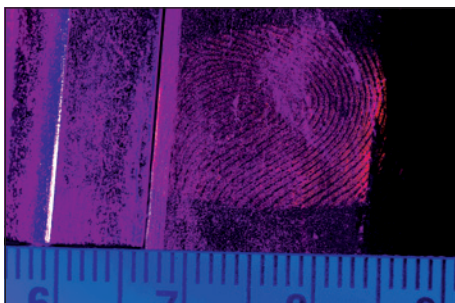
USING THE SIRCHSTAND™ FORENSIC PHOTOGRAPHY STAND



The UV light (395nm) in use with a DSLR with macro lens can be used for close-up photos of fingerprints developed with cyanoacrylate and stained with Ardrox. (camera not included)



The UV light (395nm) in use with a DSLR with macro lens can be used for close-up photos of fingerprints developed with fluorescent powder. (camera not included)



Oblique white light used with a DSLR with macro lens for close-up photos of indented writing. (camera not included)



Larger evidence such as footwear castings can be photographed by raising the mounted camera using the column adjustment. The resulting photo is made possible by using the white light from an oblique angle. (camera not included)



PHTMX01 SPECIFICATIONS:

Base:

- 19.25" wide x 18" (48.89cm x 45.73cm) deep
- Matte black powder coated steel
- Laser etched with 28 x 30 cm grid

Column:

- 36" tall (working range 3" - 30" above base)
- Sliding steel spring with trigger release
- Ruled (inches and cm)

Forensic Lights:

- 2 - 55K White LED, black anodized aluminum
- 2 - 395nm UV LED, black anodized aluminum
- 2 - 455nm LED, black anodized aluminum

Flexible arms:

- 4 - vinyl coated flexible steel arms w/ C-clips, table mountable
- 2 - vinyl coated flexible steel arms w/ C-clips, attached to camera mount

Weight: 22 lb. (9.979kg)

PHTMX01 INCLUDES:

- 1- SirchStand™ Forensic Photography Stand
- 2 - 55K White LED, black anodized aluminum
- 2 - 395nm UV LED, black anodized aluminum
- 2 - 455nm LED, black anodized aluminum
- 1- PGE4 Photography Glare Elimination Paper, 18" x 13.5" (45.7cm x 34.3cm), 4 ea
- 1- FXMAG4 Magnets, 4 each



The PHTMX01 includes 4 pin-style magnets for securing evidence on the evidence platform.

CATALOG NO.	DESCRIPTION	PRICE
PHTMX01	SirchStand™ Forensic Photography Stand	
PGE4	Photography Glare Elimination Paper, 18" x 13.5" (45.7cm x 34.3cm), 4 ea.	
FXMAG4	Magnets, pin-style, set of 4 each	



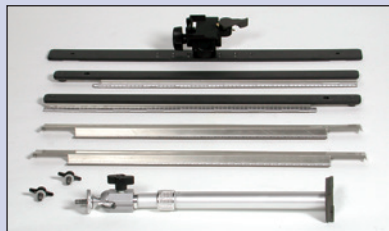
No. UPS100
(camera not included).

UPS100 SPECIFICATIONS:

Frame Interior Area: 12.75" x 14.875"
(32.4cm x 37.8cm)

Adjustable Extension Arm: 9.5"-16"
(21.4cm-40.6cm)

Total Weight: 5.9 lbs. (2.7kg)



The No. UPS100 outperforms cumbersome tripods—and the entire unit disassembles in seconds!

DEPS100/DEPS100M CONTENTS:

- 1- Digital Crime/Accident Scene Camera
- 1- UPS100 Universal Evidence Photo Stand w/ English Scales (DEPS100 only)
- 1- UPS100M Universal Evidence Photo Stand w/Metric scales (DEPS100M only)
- 1- PEN15V Vinyl Crime/Accident Photo Evidence Numbers 1-15
- 1- PDN17V Vinyl Crime/Accident Photo Direction Indicators
- 1- PMNM 4" x 4" (10.2cm x 10.2cm) Reversible Number Placards, Numbers 1-48
- 1- 7.52" (19.1cm) high Number Placard Holder
- 1- 13.25" (33.6cm) high Number Placard Holder
- 1- DEPS102 MiniPod Closeup Stand
- 1- PPS400 6" (15.2cm) Photo Evidence Scales (black on white) 10 ea.
- 1- PPS402 6" (15.2cm) Photo Evidence Scales (white on blue), 10 ea.
- 1- DEPS100CC Durable Molded Carrying Case w/pre-cut foam insert; Dimensions: 28"W x 17"H x 10.5"D (71.1cm x 43.2cm x 26.7cm); Weight: 21.65 lbs. (9.8kg)

UNIVERSAL EVIDENCE PHOTO STAND

SIRCHIE®'s Universal Photo Evidence Stand is an excellent alternative to traditional cumbersome camera tripods. This photo stand eliminates the problem of tripod legs showing up in evidential photographs. It features full-length English (UPS100) or Metric (UPS100M) photo scales on all four sides.

The outer frame is constructed of sturdy steel with a matte black wrinkle coat finish, and the adjustable photo scale mounts are polished steel. The unit also features a telescoping professional-duty camera mount. The Universal Photo Evidence Stand is sturdy enough to support most digital and analog cameras up to 2.5 lbs. (1.1kg). The unit can be assembled and disassembled in seconds for easy storage and transport.

The evidence scales are printed on magnetic strips for easy replacement. The front and back scales are mounted on sliding scale mounts for easy adjustment to cover the evidence being photographed.

CATALOG NO.	DESCRIPTION	PRICE
UPS100	Universal Evidence Photo Stand w/English Scales	
UPS100M	Universal Evidence Photo Stand w/Metric Scales	
UPS101W	Magnetic Scale Set, White, English, 4 each	
UPS102W	Magnetic Scale Set, White, Metric, 4 each	
UPS101B	Magnetic Scale Set, Black, English, 4 each	
UPS102B	Magnetic Scale Set, Black, Metric, 4 each	

DIGITAL EVIDENCE PHOTO SYSTEM

Our most complete crime/accident scene digital recording outfit is built around a full-featured, high-resolution digital camera. The camera offers many of the features you'll find on most digital cameras: aperture and shutter priority, manual and full automatic exposure, auto focus, and built-in flash with provisions for external flash. Through-the-lens images are shown on a large LCD screen that permits real-time viewing of the crime scene.

Rounding out the system are evidence marking tents and placard holders. The Universal Evidence Photo Stand is ideal for recording impression evidence as well as many other items of forensic interest. The MiniPod is used for close-up shots of fingerprints, tool marks and small items of evidence.



Digital camera may not be as pictured.
Call for latest offering and specs.

CATALOG NO.	DESCRIPTION	PRICE
DEPS100	Digital Evidence Photo System w/ English Scales	
DEPS100M	Digital Evidence Photo System w/ Metric Scales	

MINIPOD CLOSE-UP STAND

Lightweight yet rugged aluminum construction and a self-contained close-up lens make the MiniPod the perfect companion for photographing small items of evidence.

Legs are easily removed for convenient storage in your camera accessory bag. The close-up lens offers edge-to-edge sharpness. A 52mm coupling fits most lenses but adapters may be purchased for other lens sizes.



The DEPS102 MiniPod in use with digital camera for evidential photo.

CATALOG NO.	DESCRIPTION	PRICE
DEPS102	MiniPod Close-Up Stand	

THE FLEXOPOD™

Many photographic assignments require the use of a rigid camera support but most photo-type tripods are simply too big and bulky to be useful. The FlexOpod™ was designed specifically for just those types of difficult, close-up situations that require a steady, sturdy mount to support the camera.

The FlexOpod™ is a compact, simple-to-use photographic platform with fully adjustable, vinyl covered, gooseneck legs that work on flat or irregular surfaces. It is sturdy enough to support most digital cameras.

For those situations where highly irregular surfaces such as stairwells are to be photographed, optional leg extenders are available.



*FlexOpod™
(camera not included).*



A stairwell poses no problems for the FLXP100 when the optional leg extenders (FLXP101) are attached.

CATALOG NO.	DESCRIPTION	PRICE
FLXP100	FlexOpod™	
FLXP101	FlexOpod™ Optional Leg Extenders (3)	

FLXP100 SPECIFICATIONS:

- Individual Leg Length: 12.875" (32.7cm)
- Overall Length: 16.25" (41.3cm)
- Total Weight: 2.9 lbs. (1.3kg)

FLXP101 SPECIFICATIONS:

- Individual Leg Length: 12" (30.5cm)
- Total Weight: 1.86 lbs. (.8kg)



The above composite was created using the five basic feature types along with accessory eyeglasses, mustache and beard. A scar was added afterward using the Wrinkle/Scar Tool.

PHOTO-REALISTIC, COLOR COMPOSITES

An eyewitness description of a suspect is often the only lead an investigator has, and the recall of a witness is better when he or she has realistic, color images from which to choose.

comPHOTOFIT® + COLOR III utilizes extensive databases with hundreds of features from actual color photographs of people—billions of combinations are possible! With comPHOTOFIT®, you build composites using five basic components: foreheads, eyes, noses, mouths, and chins. The resulting composites look like people, not generic sketches!

CUSTOMIZE YOUR COMPOSITE

Once you've assembled the five basic features of your composite, you can further modify it with accessory databases such as headwear, glasses, mustaches, beards, and an impressive arsenal of image editing tools. Adding wrinkles, scars, bruises and beard stubble is an easy task. You'll also be able to warp, nudge, adjust or change color, and lighten or darken portions of your composite, allowing you to fine-tune the image to meet your witness's description.

NEW AND IMPROVED FEATURES WITH VERSION 3

The look and feel of comPHOTOFIT® + COLOR III has been enhanced to make it more user friendly, including tabbed menus, automatic merge, multiple levels of redo in case you change your mind, and "fly over" text descriptions of all of the control buttons. There are new tools, like layer erase, where you can edit any of the layers without affecting others. The improved Capture Tool makes capturing features from existing photographs simpler.



It's now even easier to turn an eyewitness description into a photo-realistic, color composite with comPHOTOFIT® + COLOR III.

comPHOTOFIT® + COLOR III Facial Composite Software

Crime Scene Documentation/ Photography

ETHNICALLY DIVERSE FEATURE DATABASES

With ethnic diversity in many jurisdictions constantly growing, we've expanded our database choices. Now included with the all-new comPHOTOFIT® + COLOR III are: Male & Female Caucasian, Black, Hispanic, and Asian feature databases.



Caucasian
(Male & Female)



Black
(Male & Female)



Hispanic
(Male & Female)



Asian
(Male & Female)

CREATE AND EXPAND YOUR OWN DATABASES

comPHOTOFIT® + COLOR III is the **only** composite software that allows you to create your own feature databases using photos from your mugshot archives. Now more intuitive and easier-to-use than ever, the Capture Tool allows you to import a photo and capture any or all of the individual features as well as accessory images such as headwear, glasses, mustaches, and beards.

The Capture Tool is great for agencies serving areas with a unique and specific racial makeup. No other composite software gives you this kind of customization and flexibility.



CREATE WANTED POSTERS

Our newly-improved Poster Tool works just like popular word processing and graphics programs, allowing you to format your wanted poster any way you want. After sending your finished composite to the Poster Tool, create headlines and text descriptions of your suspect selecting the font type, alignment, size and color. Print your poster or export it to a wide range of image formats (JPEG, PNG, PCX, TGA, TIF, BMP, GIF or WMF).



NEW NETWORK LICENSING OPTIONS

New with comPHOTOFIT® + COLOR III comes the choice of multiple licensing for use over a network. You can purchase the software for use on a single computer or add additional licenses. If you work on a network with the need for multiple users creating composites, we now offer licenses for 5, 10, 15, or 20 additional network users.

CATALOG NO.	DESCRIPTION	PRICE
CSW03000	comPHOTOFIT® + COLOR III Facial Composite Software	
CSW03001	Single Additional License	
CSW03002	Network License (5 additional users)	
CSW03003	Network License (10 additional users)	
CSW03004	Network License (15 additional users)	
CSW03005	Network License (20 additional users)	

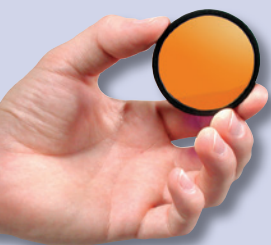
RESULTS THAT SPEAK FOR THEMSELVES!

Over the years comPHOTOFIT® composites have helped solve many cases involving unknown perpetrators. But don't just take our word for it—check out these officer/witness-created comPHOTOFIT® composites from actual cases alongside mugshots of the apprehended suspects!

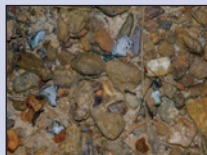


OPERATING REQUIREMENTS:

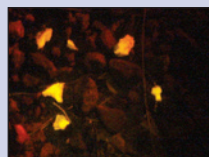
- Video Display: SVGA monitor, SVGA card capable of 64K colors @ 1024 x 768 pixel screen resolution
- Operating System: Microsoft® Windows® XP, Win 7, and Win 8 (32 and 64 bit)
- RAM Memory: 4 GB
- CD/DVD Reader
- USB 2.0 port
- Mouse: Microsoft® mouse or compatible
- Printer: Any Windows® supported graphics printer



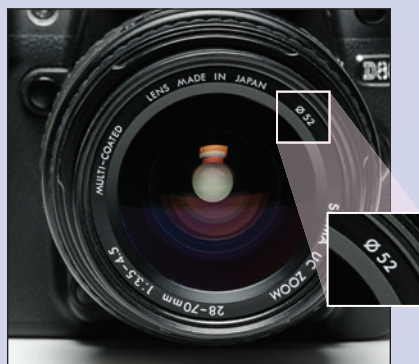
Use camera lens barrier filters in conjunction with alternate light sources to enhance items of forensic interest for photography.



Area of interest illuminated with normal light.



Same area of interest illuminated with blue (455nm) light and photographed using an orange barrier filter. Bone fragments are now clearly seen.



To determine the filter thread size of your camera lens look for the symbol in the photo above. If this symbol cannot be found, see measuring instructions below.



Measuring filter thread size: Filter threads are measured in millimeters, so use a metric ruler. Place the ruler across the diameter (widest part) of the camera lens as illustrated starting from inner edge of the filter threads and measure to the opposite side.

CAMERA LENS BARRIER FILTERS

These filters are used in conjunction with alternate light sources to enhance items of interest and eliminate backgrounds when shooting photos of evidence. Filters are available in three colors (Orange, Yellow, Red) and all the most popular lens thread sizes. Also available are filter kits that include one filter of each color in your choice of thread size.



CATALOG NO.	DESCRIPTION	PRICE
CFY49	Camera Lens Barrier Filter, Yellow, 49mm	
CFY52	Yellow, 52mm	
CFY55	Yellow, 55mm	
CFY58	Yellow, 58mm	
CFY62	Yellow, 62mm	
CFY67	Yellow, 67mm	
CFY72	Yellow, 72mm	
CFY77	Yellow, 77mm	
CFY82	Yellow, 82mm	
CFN49	Camera Lens Barrier Filter, Orange, 49mm	
CFN52	Orange, 52mm	
CFN55	Orange, 55mm	
CFN58	Orange, 58mm	
CFN62	Orange, 62mm	
CFN67	Orange, 67mm	
CFN72	Orange, 72mm	
CFN77	Orange, 77mm	
CFN82	Orange, 82mm	
CFR49	Camera Lens Barrier Filter, Red, 49mm	
CFR52	Red, 52mm	
CFR55	Red, 55mm	
CFR58	Red, 58mm	
CFR62	Red, 62mm	
CFR67	Red, 67mm	
CFR72	Red, 72mm	
CFR77	Red, 77mm	
CFR82	Red, 82mm	
AFK49	Camera Lens Barrier Filter Kit (1 ea. Yellow, Orange, Red), 49mm	
AFK52	(1 ea. Yellow, Orange, Red), 52mm	
AFK55	(1 ea. Yellow, Orange, Red), 55mm	
AFK58	(1 ea. Yellow, Orange, Red), 58mm	
AFK62	(1 ea. Yellow, Orange, Red), 62mm	
AFK67	(1 ea. Yellow, Orange, Red), 67mm	
AFK72	(1 ea. Yellow, Orange, Red), 72mm	
AFK77	(1 ea. Yellow, Orange, Red), 77mm	
AFK82	(1 ea. Yellow, Orange, Red), 82mm	

REGULAR IDENTIFICATION SIGN

The regular identification sign is an economical, popular photo identification sign. It features a grooved, black felt surface that permits rapid interchanging of arrest numbers and dates.



Typical mugshot using No. 839P.

CATALOG NO.	DESCRIPTION	PRICE
839P	Regular Identification Sign (specify heading)	

BUREAU IDENTIFICATION SIGN

This is a large identification sign that measures 6" x 10" and provides ample space for additional personal identification fields that may be needed. A grooved, jet black felt surface permits the rapid interchanging of numbers and dates. Extra numbers and letters may be ordered.



Typical mugshot using No. 840P.

CATALOG NO.	DESCRIPTION	PRICE
840P	Bureau Identification Sign, 6" x 10"	

REPLACEMENT NUMERALS AND LETTERS

These are replacement numerals and letters for **SIRCHIE®**'s 839P and 840P identification signs. They are available in three different sizes (1", 1/2", 3/8").

CATALOG NO.	DESCRIPTION	PRICE
840P101	Numerals 0-9, 1" (1 ea./10)	
840P102	Numerals 0-9, 1/2" (1 ea./10)	
840P103	Letters A-Z, 1" (1 ea./26)	
840P104	Letters A-Z, 1/2" (1 ea./26)	
840P105	Letters A-Z, 3/8" (1 ea./26)	
840P100.1	Numerals 0-9, 1" (10 ea./100)	
840P100.5	Numerals 0-9, 1/2" (10 ea./100)	

839P FEATURES:

- 5/8" (16mm) thick wood-embossed in jet black felt
- Grooved for easy numeral/letter insertion
- Extruded black plastic end caps

Numeral Specifications:

- Six sets 1" high white plastic numerals of 0-9 designation—60 total
- Four sets 1/2" high white plastic numerals of 0-9 designation—40 total

Department Heading:

- 3/8" high white characters installed to customer request, 15 characters maximum per line (two lines max.)

Dimensions:

8"W x 4"H x .625"D
(20.3cm x 10.2cm x 16mm);

Weight: 12 oz. (.3kg)

Supplied Neck Chain Mounting:

- 24"L (61cm) #6 ball chain attached to the mug sign by two chain retention clips (mounted). Allows for adjustment in chain length.

840P FEATURES:

- 5/8" (16mm) thick wood-embossed in jet black felt
- Grooved for easy numeral/letter insertion
- Extruded black plastic end caps

Numeral Specifications:

- A. Ten sets 1" high white plastic numerals of 0-9 designation—100 total
- B. Six sets 1/2" high white plastic numerals of 0-9 designation—60 total

Field Headings:

- 3/8" high white characters installed as shown in picture

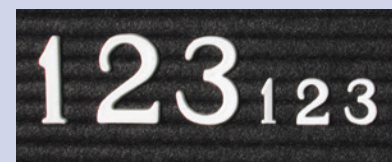
Dimensions:

10"W x 6"H x .625"D
(25.4cm x 15.2cm x 16mm);

Weight: 1 lb. (.4kg)

Supplied Neck Chain Mounting:

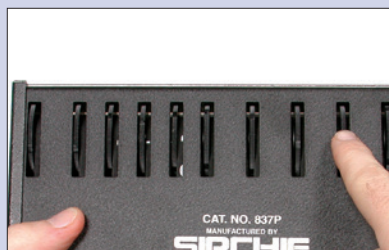
- 24"L (61cm) #6 ball chain attached to the mug sign by two chain retention clips (mounted). Allows for adjustment in chain length.



The 1" numbers (left) and 1/2" numbers (right) are shown actual size.

837P FEATURES:

- Aluminum alloy construction
- Steel thumbwheel support rods
- High-impact ABS plastic injection molded thumbwheels
- Durable textured black finish
- Dimensions:
9.25"W x 5.75"H x 1.6875"D
(23.5cm x 14.6cm x 4.3cm)
- Weight: 1.5 lbs. (.7kg)



Change the numbers on the front of both Rotary Mugsigns by rotating the wheels on the rear panel.

837PH FEATURES:

- Aluminum alloy construction
- Steel thumbwheel support rods
- High-impact ABS plastic injection molded thumbwheels
- Durable textured black finish
- Dimensions:
14"W x 5.875"H x 1.625"D
(35.6cm x 14.9cm x 4.1cm)
- Weight: 2.125 lbs. (1kg)

**SHOP
ONLINE**
www.sirchie.com

ROTARY I.D. SIGN

This is **SIRCHIE®**'s most popular identification sign and is used throughout the law enforcement community worldwide. The ruggedly constructed sign features replaceable year and number bands for years of continuous use.



The No. 837P Rotary I.D. Sign is used in typical mugshot photos like the one above.

CATALOG NO.	DESCRIPTION	PRICE
837P	Rotary I.D. Sign (specify heading when ordering)	
837P11	Replacement Bands (11)*	
837P9	Replacement Year Band only (current + 10)	
*837P11 is supplied w/6 numeral bands, 4 date bands and 1 year band		

HAND-HELD ROTARY I.D. SIGN

This is a hand-held version of the popular SIRCHIE 837P identification sign. The sign features rugged, aluminum hand grips and is ideal for processing a large number of subjects. Use it with any type of photo identification system.



Typical mugshot photo using No. 837PH.

CATALOG NO.	DESCRIPTION	PRICE
837PH	Hand-Held Rotary I.D. Sign (specify heading)	

ELECTRONIC DIGITAL ID SIGN

This electronic digital identification sign offers convenience and reliability. The unit features a dual bank of liquid crystal displays known for their photographic compatibility.

The sign is simple to use and features a swing-down front panel for rapid access to the entry keyboard. Simply touch the key number desired—there are no knobs to turn and no numbers to insert.



The No. 893PA Electronic Digital Mug Sign is used in typical mugshot photos.



893PA FEATURES:

- Liquid Crystal Display (dual)
- 12 digits total—6 each bank
- Character Height: .75" (19mm)
- Contrast Ratio: 20:1
- LCD Operating Life: 100,000 hrs with 4 "AA" Alkaline batteries.

Mounting Options Included:

- Detachable neck chain
- Camera stand bracket

Dimensions:

9"W x 6"H x 1.25"D
(22.9cm x 15.2cm x 3.2cm);

Weight: 1.5 lbs. (.7kg)

CATALOG NO.

DESCRIPTION

PRICE

893PA

Electronic Digital I.D. Sign (specify heading)

ROTARY I.D. SIGN WITH SSN FORMAT

This is the rotary sign to use when the subject's social security number is desired as well as the day, month and year. The sign includes two bands with alphabetical designators (one band has A-M and another has N-Z). Replaceable number and letter bands are available.



Typical mugshot using No. 837PS.

837PS SPECIFICATIONS:

- Aluminum alloy construction
- Steel thumbwheel support rods
- High-impact ABS plastic injection molded thumbwheels
- Durable textured black finish
- Dimensions: 9.25"W x 5.75"H x 1.6875"D (23.5cm x 14.6cm x 4.3cm)
- Weight: 1.5 lbs. (.7kg)

Supplied Mounting Options:

- **NECK CHAIN:** 24"L (61cm) #6 ball chain assembled in comfortable 1/4" (6mm) dia. clear flexible PVC tubing with quick release black ABS mounting clips
- **CAMERA STAND MOUNTING BRACKET:** Constructed of .060" thick cold-rolled steel, supplied with all hardware for proper mounting and finished in black powdered paint

CATALOG NO.

DESCRIPTION

PRICE

837PS

Rotary I.D. Sign w/SSN format
(specify heading when ordering)

837PS10

Replacement Bands (16)*

*837PS10 is supplied w/14 numeral bands and 2 letter bands.



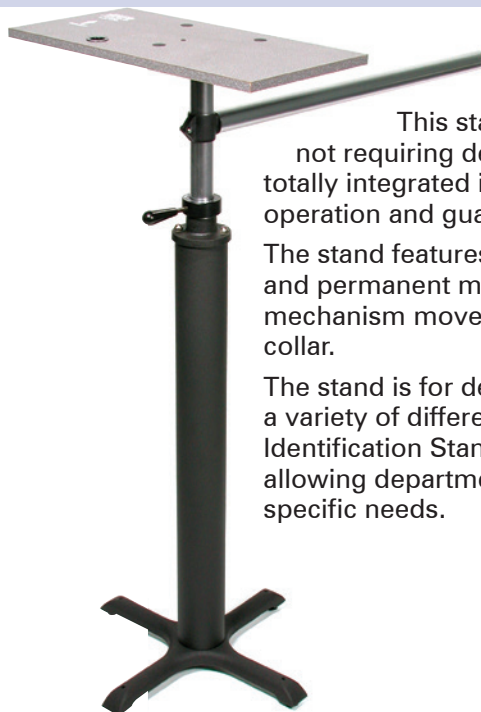
The No. 893PA Electronic Digital Sign mounted on the No. 830P.

827P SPECIFICATIONS:

Height (floor to top of platform): Min. 47.5" (1.2m); Max. 65" (1.6m); Total Travel 17.5" (44.4cm)

Platform Size:
0.75"H x 23.8"W x 11.8"D
(1.9cm x 60.4cm x 30cm)

Distance from the center line of the upright tubing to the end of the horizontal arm: 34.5" (87.6cm).



UNIVERSAL PHOTO IDENTIFICATION STAND

This stand is an excellent choice for departments not requiring dedicated camera systems. It is a complete, totally integrated identification camera stand that offers easy operation and guaranteed performance.

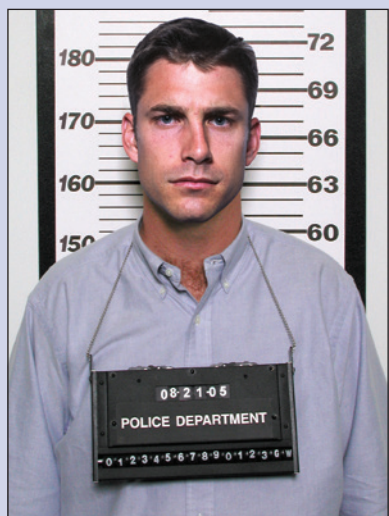
The stand features a 4-footed, cast iron base for stabilization and permanent mounting, if necessary. A height-lock mechanism moves vertically and features a Teflon® locking collar.

The stand is for departments requiring a stable platform for a variety of different camera systems. The Universal Photo Identification Stand is available in 3 different configurations allowing departments to choose and adapt the stand to meet specific needs.



Easily attach an identification camera and mug sign to the camera stand.

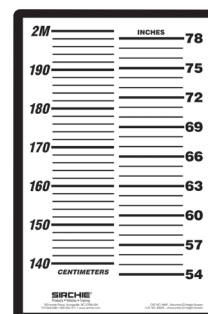
CATALOG NO.	DESCRIPTION	PRICE
827P	Universal Photo I.D. Stand	
829P	Universal Photo I.D. Stand w/rotary sign*	
830P	Universal Photo I.D. Stand w/electronic digital sign*	
*SPECIFY SIGN HEADING WHEN ORDERING		



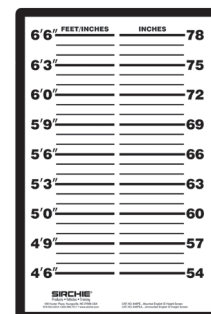
Large numbers and bold reference lines printed black on a white background make our Identification Height Screens ideal for mugshot photography.

IDENTIFICATION HEIGHT SCREEN

Use the identification height screen with any photographic identification system. It is printed in black with metric and English measurement graduations on a white background. The screen is available pre-mounted on a 32" x 21" x 0.187" rigid backing or unmounted.



No. 846P



No. 846PE

CATALOG NO.	DESCRIPTION	PRICE
846P	Mounted English/Metric Identification Height Screen	
846PA	Unmounted English/Metric Identification Height Screen	
846PE	Mounted English Identification Height Screen	
846PEA	Unmounted English Identification Height Screen	
846PM	Mounted Metric Identification Height Screen	
846PMA	Unmounted Metric Identification Height Screen	