



# Latent Fingerprint Development

## The Latent Fingerprint

Latent prints can provide recognizable ridge details that can help identify the owner of those prints. In this section, we offer a comprehensive line of latent fingerprint powders and applicators, lifting tapes and accessories, and latent print developing reagents; everything you need to find, develop and lift latent prints.

All visible print detail should be photographed immediately.

The print residue that is left behind can often be very fragile so caution should be taken to select and execute latent print processing methods that do not damage any possible ridge detail.

Choosing the right development tool is a major component of a latent technician's job. To know how to choose the right tool, you should understand what makes a fingerprint: the eccrine, sebaceous, and apocrine glands.

Gland	Secretions	Inorganic	Organic
Eccrine	Largely water with inorganic or organic contaminants	Chlorides, metal ions, ammonia, sulfates, and phosphates	Amino acids, urea, lactic acid, choline, uric acid, creatinine, sugars
Sebaceous	Fatty or greasy substances	None	Fatty acids and glycerides, alcohols, hydrocarbons
Apocrine	Cytoplasm and nuclear materials	Sodium, potassium, and iron	Proteins, carbohydrates, cholesterol

There are other components that can affect fingerprints and the method to develop and lift them. Factors include:

- Age and other factors of the individual
- Exposure to the environment
- The surface where the fingerprint was placed



**Often Bought Together:**  
Indicates items often purchased in conjunction with other items.



## Overview of Chemical Tools and Methods

It's essential that technicians understand the sequence of development products since developmental reactions will change the chemical nature of the fingerprint and it might become impossible to develop.

Method	Why it's useful to you
Powders	Powders adhere to water and fatty deposits and generally work better with newer fingerprints. Choose a powder that contrasts with the background.
Fluorescent Powders	Fluorescent powders are especially useful on patterned backgrounds. An ultraviolet or forensic light source is required.
Small Particle Reagent	Small Particle Reagent (SPR) adheres to the fatty components of skin secretions. The reaction result is very fragile and should be photographed before lifting is attempted.
Cyanoacrylate (super glue fuming)	This method produces excellent results on styrofoam, plastic bags, and on most non-porous surfaces. It reacts with water to form a hard, whitish deposit that can be dusted with powders.
Adhesive Side Powder	Adhesive side powder attaches itself to print impressions on the adhesive side of tapes. It produces excellent results on light-colored or transparent tapes including duct tapes, masking tapes, plastic surgical tape, foam tape, clear and reinforced packing tapes and labels.

## Guide to Surfaces

Surface	Treatment Method
<b>Smooth, non-porous:</b> glass, hard plastic mouldings, surfaces treated with paint or varnish	Powders, iodine, small particle reagent, cyanoacrylate/ fluorescent dyes
<b>Rough, non-porous:</b> rough, textured surfaces, grained plastic mouldings	Small particle reagent, cyanoacrylate/fluorescent dyes
<b>Paper &amp; cardboard:</b> paper & cardboard that hasn't been waxed or plastic-coated.	Iodine, ninhydrin, DFO, silver nitrate, or physical developer. Powders won't work with older fingerprints
<b>Plastic packaging media:</b> Polyethylene, polypropylene, cellulose acetate, and laminated paper surfaces	Iodine, small particle reagent, cyanoacrylate/fluorescent dyes, and powders
<b>Soft vinyl (PVC), rubber and leather:</b> simulated leather and cling film	Iodine, small particle reagent, cyanoacrylate, and powders
<b>Untreated metal:</b> untreated, bare metal surfaces; metal surfaces that haven't been painted or lacquered.	Small particle reagent, powders, cyanoacrylate / fluorescent dyes and powders
<b>Unfinished wood:</b> wood surfaces that haven't been painted or treated.	Ninhydrin. You can use powders on smooth wood and silver nitrate or physical developer on light woods.
<b>Wax and waxed surfaces:</b> items made of wax, such as candles, wax-coated paper, cardboard, wood surfaces	Nonmetallic powders, cyanoacrylate / fluorescent dyes
<b>Adhesive-coated surfaces:</b> tapes and similar surfaces that are not likely to dissolve in water	Adhesive-side powders



**Pricing Information:**  
For current pricing visit  
www.sirchie.com, or  
call 800.356.7311

**Often Bought Together:**  
Indicates items often  
purchased in conjunction  
with other items.

## Regular Latent Print Powders

Our print powders offer the best sensitivity, adherence qualities, and reproduction capabilities of any powders available. Use them to produce excellent results.



**Using the correct powder is extremely important. Considerations for the powder are:**

- The powder’s sensitivity to secretions
- The powder’s adherence qualities
- The powder’s reproduction capabilities

**When using latent fingerprint powder:**

- Never dip the brush directly into the powder jar. Measure out a small quantity on paper. Less is best.
- Carefully sweep the surface being examined with the brush or wand. A swinging motion or side-to-side motion will both work.



### Silk Black

The most popular of our oxide latent powders due to its versatility. Sirchie has followed the same formulation for more than sixty years, which attests to its dependability. Use Silk Black on non-porous surfaces such as painted wood, metal, and most plastic surfaces. This powder offers superior contrast on light-colored surfaces.



No. 101L	Silk Black Powder, 2 oz. (59ml)
No. BPP098	Silk Black Powder, 8 oz. (237ml)
No. BPP0916	Silk Black Powder, 16 oz. (473ml)
No. BPP0964	Silk Black Powder, 64 oz. (1893ml)
No. BPP09128	Silk Black Powder, 128 oz. (3785ml)

### Silk Gray

Excellent for processing both light and dark surfaces, Silk Gray features the flexibility of a multi-use means of developing latent prints on many non-porous surfaces. Silk Gray offers super sensitivity to minute skin secretions and its consistent quality produces consistent results.



No. 102L	Silk Gray Powder, 2 oz. (59ml)
No. BPP398	Silk Gray Powder, 8 oz. (237ml)
No. BPP3916	Silk Gray Powder, 16 oz. (473ml)
No. BPP3964	Silk Gray Powder, 64 oz. (1893ml)
No. BPP39128	Silk Gray Powder, 128 oz. (3785ml)

### Indestructible White

Indestructible White is the whitest of white powders available from any source. Its consistent quality and texture assure the best possible results on dark, non-porous surfaces. Indestructible White has a superior affinity to the weakest of skin secretions.



No. 103L	Indestructible White Powder, 2 oz. (59ml)
No. BPP198	Indestructible White Powder, 8 oz. (237ml)
No. BPP1916	Indestructible White Powder, 16 oz. (473ml)
No. BPP1964	Indestructible White Powder, 64 oz. (1893ml)
No. BPP19128	Indestructible White Powder, 128 oz. (3785ml)

### Brilliant Red

Brilliant Red delivers superior sensitivity and adherence to many non-porous surfaces. It offers the brightest contrast of any of our regular latent print powders on both light and dark surfaces.



No. 104L	Brilliant Red Powder, 2 oz. (59ml)
No. BPP298	Brilliant Red Powder, 8 oz. (237ml)
No. BPP2916	Brilliant Red Powder, 16 oz. (473ml)
No. BPP2964	Brilliant Red Powder, 64 oz. (1893ml)
No. BPP29128	Brilliant Red Powder, 128 oz. (3785ml)

### Blue

Blue regular fingerprint powder features an incredibly unique formulation for use on non-porous surfaces—any surface where Oxide powders are recommended. It offers superior contrast on both light and dark surfaces.



No. 108L	Blue Powder, 2 oz. (59ml)
----------	---------------------------

### Silver Metallic

Highly polished and plated surfaces such as silver, nickel and chrome surfaces require a different approach when dusting for latent prints. Sirchie’s metallic powders are specially formulated to address the problem of slippery surfaces by offering high sensitivity and adherence. They do so without damaging fragile latent prints. Silver Metallic provides superb contrast on dark surfaces.



No. 105L	Silver Metallic Powder, 2 oz. (59ml)
No. BPP498	Silver Metallic Powder, 8 oz. (237ml)
No. BPP4916	Silver Metallic Powder, 16 oz. (473ml)

### Gold Metallic

Gold Metallic offers good photographic contrast on light surfaces and very good contrast on dark objects. When working on highly polished or plated surfaces, sensitivity and adherence to the secretions are key and this powder performs superbly.



No. 106L	Gold Metallic Powder, 2 oz. (59ml)
No. BPP898	Gold Metallic Powder, 8 oz. (237ml)
No. BPP8916	Gold Metallic Powder, 16 oz. (473ml)

### Copper Metallic

Copper Metallic powder offers good contrast on light and dark surfaces, and the same degree of sensitivity and adherence as the other two metallics in this series.



No. 107L	Copper Metallic Powder, 2 oz. (59ml)
No. BPP598	Copper Metallic Powder, 8 oz. (237ml)
No. BPP5916	Copper Metallic Powder, 16 oz. (473ml)

### Heavy Black

Heavy powders are made with both oxide and metallic components adding weight that makes them perfect for the windy conditions found at outdoor crime scenes. Use Heavy Black on light colored surfaces for best contrast.



No. HLP01	Heavy Black Powder, 2 oz. (59ml)
No. BPP698	Heavy Black Powder, 8 oz. (237ml)
No. BPP6916	Heavy Black Powder, 16 oz. (473ml)
No. BPP69128	Heavy Black Powder, 128 oz. (3785ml)

### Heavy Gray

Heavy powders are made with both oxide and metallic components adding weight that makes them perfect for the windy conditions found at outdoor crime scenes. Use Heavy gray on light or dark surfaces.



No. HLP02	Heavy Gray Powder, 2 oz. (59ml)
No. BPP798	Heavy Gray Powder, 8 oz. (237ml)
No. BPP7916	Heavy Gray Powder, 16 oz. (473ml)

### Dual Purpose Black

We pioneered the use of fluorescent latent powders when we introduced these dual-purpose powders. It’s ideal on all oxide surfaces and it also contains a fluorescent compound that fluoresces when exposed to ultraviolet (UV) light.



No. DP001	Dual Purpose Black Powder, 2 oz. (59ml)
No. BPP0018	Dual Purpose Black Powder, 8 oz. (237ml)
No. BPP00116	Dual Purpose Black Powder, 16 oz. (473ml)

### Dual Purpose White

Dual Purpose White contains a fluorescent compound that fluoresces when exposed to ultraviolet (UV) light which permits viewing & photographing latent prints on multi-colored backgrounds. Excellent contrast under normal lighting is also possible on dark surfaces.



No. DP002	Dual Purpose White Powder, 2 oz. (59ml)
No. BPP0028	Dual Purpose White Powder, 8 oz. (237ml)
No. BPP00216	Dual Purpose White Powder, 16 oz. (473ml)



**Pricing Information:**  
For current pricing visit  
www.sirchie.com, or  
call 800.356.7311

Silver/Black

This two-color powder will contrast with most color surfaces. It will develop black on light-colored surfaces and silver on dark-colored surfaces. Lifted prints can be preserved on white or black backing cards.



No. SB201L	Silver/Black Powder, 2 oz. (59ml)
No. BPP2018	Silver/Black Powder, 8 oz. (237ml)
No. BPP20116	Silver/Black Powder, 16 oz. (473ml)
No. BPP201128	Silver/Black Powder, 128 oz. (3785ml)

Chemist Gray

Faurot-brand Chemist Gray powder has a wide variety of uses on non-porous surfaces and features excellent adherence and development qualities.



No. L-1200	Chemist Gray Powder, 2 oz. (59ml)
No. L-1201	Chemist Gray Powder, 8 oz. (237ml)
No. L-1202	Chemist Gray Powder, 16 oz. (473ml)
No. L-1203	Chemist Gray Powder, 128 oz. (3785ml)

Banta Multi-Purpose

This powder has the unusual capability to develop black on light surfaces and silver color on dark surfaces. *Once lifted, prints developed with this powder must be backed on white backing cards.*



No. L-1300	Banta Multi-Purpose Powder, 2 oz. (59ml)
No. L-1301	Banta Multi-Purpose Powder, 8 oz. (237ml)
No. L-1302	Banta Multi-Purpose Powder, 16 oz. (473ml)
No. L-1303	Banta Multi-Purpose Powder, 128 oz. (3785ml)

Silver/Gray

This powder combines the “Stick” characteristics of silver metallic powder and the “Slip” characteristics of silk gray powders. Use it on all glass, plastic laminates, metallic surfaces, high-gloss enamel or varnished surfaces, hard rubber, thermoset plastics and blue-steel weapons.



No. SG202L	Silver/Gray Powder, 2 oz. (59ml)
No. BPP3028	Silver/Gray Powder, 8 oz. (237ml)
No. BPP30216	Silver/Gray Powder, 16 oz. (473ml)
No. BPP302128	Silver/Gray Powder, 128 oz. (3785ml)

Silver/Red

Silver/Red powder offers unique contrast with most color surfaces, developed bright red on light-colored surfaces and silver on dark-colored surfaces. It’s ideal for metal surfaces such as file cabinets.



No. SR301L	Silver/Red Powder, 2 oz. (59ml)
No. BPP3018	Silver/Red Powder, 8 oz. (237ml)
No. BPP30116	Silver/Red Powder, 16 oz. (473ml)
No. BPP301128	Silver/Red Powder, 128 oz. (3785ml)

Coin Box/Galvanic

Coin Box/Galvanic powder should be your first choice for highly polished or chromed surfaces. It also works well on hard to process galvanized metals like duct work, drain pipes, and metal trash cans.



No. CBG203L	Coin Box/Galvanic Powder, 2 oz. (59ml)
No. BPP2038	Coin Box/Galvanic Powder, 8 oz. (237ml)
No. BPP20316	Coin Box/Galvanic Powder, 16 oz. (473ml)
No. BPP203128	Coin Box/Galvanic Powder, 128 oz. (3728ml)

DNA-Free Latent Print Processing

With advances in DNA analysis, full profiles can be obtained from very small samples. This has led to CSI processing crime scenes for “touch DNA.” This means DNA that is recovered from skin cells that are left behind when a person touches or comes into contact with something, such as clothes or weapons.

It is therefore critical that the integrity of the crime scene be maintained, including eliminating cross-contamination possibilities from the tools and methods used to collect the DNA and the tools used to process the crime scenes.

To meet your needs, we now offer DNA-Free Processing tools, including brushes, powders, and lifting tape. They operate and have the same integrity as our products but:

- These items are treated with a scientifically proven DNA destroying process that penetrates and decontaminates throughout, not just on the surface.
- Each lot is certified through a third party testing to ensure each batch processed is DNA free.
- All items are packaged to prevent contamination before use, and are meant to be used only once.

**Often Bought Together:**  
Indicates items often purchased in conjunction with other items.

DNA-Free Silk Black Latent Print Powder

Use Silk Black on non-porous surfaces such as painted wood, metal, and most plastic surfaces. This powder offers superior contrast on light-colored surfaces. *Processed and certified to be DNA-Free.*



No. DNA101L	DNA-Free Silk Black, 1 oz.
-------------	----------------------------

DNA-Free Indestructible White Latent Print Powder

Indestructible White is the whitest of white powders available from any source. Its consistent quality and texture assure the best possible results on dark, non-porous surfaces. Indestructible White has a superior affinity to the weakest of skin secretions. *Processed and certified to be DNA-Free.*



No. DNA103L	DNA-Free Indestructible White, 1 oz.
-------------	--------------------------------------

DNA-Free Silver/Black Latent Print Powder

Silver/Black latent print powder is a two-color powder that will contrast most any color surface—developing black on light surfaces and silver on dark surfaces. *Processed and certified to be DNA-Free.*



No. DNASB201L	DNA-Free Silver/Black, 1 oz.
---------------	------------------------------

DNA-Free Fiberglass Brush

These fiberglass brushes are the same as our popular 122L brush, but packaged in a breathable pouch, and processed and certified to be DNA free.



No. DNA122L	DNA-Free Fiberglass Brush
-------------	---------------------------

DNA-Free Squirrel Hair Brush

These squirrel hair brushes are the same as our 120LS brush, but packaged in a breathable pouch, and processed and certified to be DNA free.



No. DNA120LS	DNA-Free Squirrel Hair Brush
--------------	------------------------------

DNA-Free Lifting Tape

Pressure wound, heat treated and “fish-eye” free, this lifting tape is also treated to destroy DNA and is certified DNA free.



No. DNA144L2	DNA-Free Lifting Tape, 2” x 120”, 1 roll
--------------	--

DNA-Free Latent Print Kits

This single use kit has everything you need to process, lift, and preserve fingerprints at the crime scene while ensuring that no outside DNA is introduced. Kits are processed and certified as DNA Free.



No. DNALP100 Contents:

- 1- DNA122L DNA Free Fiberglass Brush
- 1- DNASB201L DNA Free Silver/Black Powder, 1 oz. (30ml)
- 1- DNA144LS DNA Free Lifting Tape, 2” x 120” (5cm x 320cm)
- 15- FC3431 3” x 5” Reversible Backing Cards
- 1- SM100SR1 Integrity Evidence Seal
- 1- Cardboard kit box, 7” x 5” x 3” (17.8cm x 12.7cm x 7.62cm)

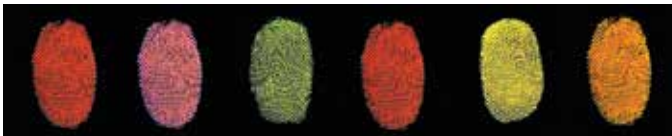
No. DNALP100	DNA-Free Latent Print Kit w/Fiberglass Brush
--------------	--

Pricing Information:  
For current pricing visit  
www.sirchie.com, or  
call 800.356.7311

## Fluorescent Latent Print Powders

These powders work especially well on dark or multi-colored surfaces, greatly enhancing ridge details when under ultraviolet light. Use these powders with:

- Forensic Light Sources
- Lasers: Argon Ion, Copper Vapor, and Nd (neodymium) Yag Laser
- Ultraviolet Lights: Longwave and Shortwave
- Bluemaxx (455nm) Alternate Light Source w/orange filter



Fluorescent Powder	2 oz. (59ml)	16 oz.
REDescent™	No. LL701	No. LL7012
PINKescent™	No. LL702	No. LL7022
GREENescent™	No. LL703	No. LL7032
SILVER/REDescent™	No. LL704	No. LL7042
YELLOWescent™	No. LL705	No. LL7052
ORANGEescent™	No. LL706	No. LL7062

## Latent Print Accessories

### Powder Grabber Towels

Use these Powder Grabber Towels to remove fingerprint powder from smooth surfaces. Made with mineral oil to increase powder retention and reusable, these towels will help you clean off powder again and again. Available in a 100 pack or 20 pack.



No. PGT100 Powder Grabber Towels, 100 ea.

No. PGT20 Powder Grabber Towels, 20 ea.

### Extra Wide-Mouth Sifter/Screen Jars

Avoid contaminating latent print powder with this powder dispenser. Dipping the powder brush directly into your powder supply can cause lumps and can transfer contaminants. This is ideal if you purchase bulk amounts of powder.



No. WMSS100A Extra Wide-Mouth Sifter/Screen Jars, 2 oz., 3 ea.

## Search Powder Foam-Away

Excellent for cleaning kits of spilled powders; it's used primarily for cleaning latent fingerprint powders from various surfaces after investigations.



No. PC100 Search Powder Foam-Away, 16 oz. aerosol

## Latent Powder Brushes

### Search Carbosmoove I Brush

These brushes feature the latest in latent print development technology. The benefits of carbon fiber brushes are:

- The fibers are naturally smooth and have low friction quality
- Fibers are corrosion and moisture-resistant, ensuring the finest brush in high humidity



#### CFB100 Specifications:

- Overall Length: 7.0" (17.8cm)
- Carbon Filament Length: 2 ¼" (5.7cm)
- Net Weight: 6.7 oz. (190g)
- Handle: Plastic

No. CFB100 Carbosmoove I Brush

### Search Goat Hair Powder Brush

These brushes are made from white goat hair and supplied with a protective container with cap to prevent contamination.



#### 117L Specifications:

- Overall Length: 4.75" (12.07cm)
- Bristle Length: 1 ½" (3.8cm)
- Net Weight: 0.5 oz. (12.7g)
- Handle: Molded polystyrene

No. 117L Goat Hair Powder Brush



Often Bought Together:  
Indicates items often purchased in conjunction with other items.

## Search Regular Powder Brush

This general-purpose brush is made of high-quality animal hair. The fine bristle quality permits development without distortion. Comes with a protective container and cap. Dimensions: 5 ¼" x ¾" dia. (13.3cm x 1cm dia.)



No. 118L Regular Powder Brush

### Search Max-Spread Sweeper Brush

The max-spread sweeper brush is made of fine blue squirrel hair with a 4" (10.2cm) wide sweeping area. The brush is excellent for dusting large areas or cleaning pre-dusted prints. A plastic storage container is provided with each sweeper.



No. 124L Max-Spread Sweeper Brush

### Search Squirrel Hair Brush

The 120LS employs Natural Blue Squirrel Hair for a soft, non-damaging means of developing latent prints. Designed for small area coverage, this exceptional tool fills the need for close-in powder coverage. If you prefer hair-type brushes over fiberglass, then this brush is ideal. The brush dimensions are: Handle length: 4 5⁄8" (11.75cm), Brush Length: 1 ¾" (4.45cm).



No. 120LS Squirrel Hair Brush

### Long Handle Brush

Our high-quality LHB02 brush features camel hair that is perfect for latent powder applications. The fine hair selection eliminates scratching ridge details and the handle is balanced for easy use. The brush dimensions are 9" x ½" dia. (22.9cm x 1.3cm dia.).



No. LHB02 Long Handle Brush

## Fiberglass Latent Print Brushes

These are the finest brushes available for developing latent fingerprints. Specially selected fiberglass filaments form a cloud-like, soft cluster that retains powder and eliminates having to replenish powder that conventional brushes require. The injection-molded and aluminum-handle brushes are available in two sizes: Standard handles measure 4 ¼" long and Kit Size handles are 2 ¾" long. *The reduced handle length makes the kit size brush an exact replacement for brushes found in most fingerprint field kits now in use.*



Use a different fiberglass brush for each color of powder to prevent introducing unwanted powder colors to your latent prints as fiberglass brushes retain powder between uses.



#### 122L/122L1 Specifications:

- Bristles: Fiberglass filament cluster, 2 ¼" (5.7cm) long
- Brush Handle: Injection-molded, ¼" dia. x 4 ¼"L (0.635cm x 10.8cm) (122L)
- Storage Container: Clear plastic w/cap, 7⁄8" dia. x 7 ½"L (2.22cm x 19cm) (122L)
- Brush Handle: Injection-molded, ¼" dia. x 2 ¾"L (0.635cm x 7cm) (122L1)
- Storage Container: Clear plastic w/cap, 7⁄8" dia. x 6"L (2.22cm x 15.24cm) (122L1)

#### 122LM/122L1M Specifications:

- Bristles: Fiberglass filament cluster, 2 ¼" (5.7cm) long
- Brush Handle: Black anodized knurled alum, ¼" dia. x 4 ¼"L (0.635cm x 10.8cm) (122LM)
- Storage Container: Clear plastic w/cap, 7⁄8" dia. x 7 ½"L (2.22cm x 19cm) (122LM)
- Brush Handle: Black anodized knurled alum, ¼" dia. x 2 ¾"L (0.635cm x 7cm) (122L1M)
- Storage Container: Clear plastic w/cap, 7⁄8" dia. x 6"L (2.22cm x 15.24cm) (122L1M)

#### 122LW Specifications:

- Bristles: Fiberglass filament cluster, 2 ¼" (5.7cm) long
- Brush Handle: Birch wood, ¼" dia. x 4 ¼"L (0.635cm x 10.8cm)
- Storage Container: Clear plastic w/cap, 7⁄8" dia. x 7 ½"L (2.22cm x 19cm)

No. 122L Standard Size Fiberglass Brush, plastic handle

No. 122L1 Kit Size Fiberglass Brush, plastic handle

No. 122LM Standard Size Fiberglass Brush, metal handle

No. 122L1M Kit Size Fiberglass Brush, metal handle

No. 122LW Standard Size Fiberglass Brush, wood handle



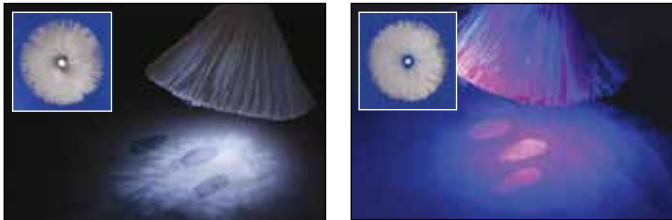
**Pricing Information:**  
For current pricing visit  
www.sirchie.com, or  
call 800.356.7311

**Often Bought Together:**  
Indicates items often  
purchased in conjunction  
with other items.

Fiberglass Mini Light Brushes

These Mini Light Brushes feature a high intensity LED—white for the MLB100 and blue for the MBLB100 (for those situations requiring the use of fluorescent powders). Both have push button and twist cap ON/OFF activation, light-weight metal body and a full-sized replaceable fiberglass brush head (shown to the left). Overall Length: 8.25" (21cm); Weight w/batteries: 1.73 oz. (49g).

Latent prints aren't always found in convenient locations. These brushes are particularly useful for dusting in darkened corners, under furniture, inside motor vehicles, etc. Utilizes 3 AAAA alkaline batteries, incorporates a 30,000-hr. LED and has an exceptionally long-life fiberglass brush head.



No. MLB100	Fiberglass Mini Light Brush, white LED
No. MBLB100	Fiberglass Mini Light Brush, blue LED
No. MLB101	Replacement Brush Head

Fiberglass Mini Light Brush Kit

This Mini Light Brush features a high intensity LED—(white) that illuminates the surface for enhanced visibility while developing latent fingerprints. Latent prints aren't always found in convenient locations. This brush is particularly useful for dusting in darkened corners, under furniture, inside motor vehicles, etc. Utilizes 3 AAAA alkaline batteries, incorporates a 30,000-hr. LED and has an exceptionally long-life fiberglass brush head.

- MLB100K Contents:**
- 1- MLB100 Mini Light Brush
  - 1- MLB101 Replacement Fiberglass Brush Head
  - 1- 107L Copper Metallic Latent Powder, 2 oz.
  - 1- 101L Black Latent Powder, 2 oz.
  - 1- 144L2 2" Transparent Lift Tape
  - 1- LB003 3" x 5" White Backing Card Pad, 50 Sheets
  - 1- MLB100C Black Molded Copolymer Carrying Case

No. MLB100K	Fiberglass Mini Light Brush Kit
-------------	---------------------------------

Fiberglass Mini Blue Light Brush Kit

This Mini Blue Light Brush Kit features a high intensity LED—(BLUE) that illuminates the surface for enhanced visibility while developing latent fingerprints using fluorescent powders.

- MBLB100K Contents:**
- 1- MBLB100 Mini Blue Light Brush
  - 1- MLB101 Replacement Fiberglass Brush Head
  - 1- LL701 Redescent Fluorescent Powder, 2 oz.
  - 1- LL703 Greenescent Fluorescent Powder, 2 oz.
  - 1- BMS300 Orange Barrier Filter Goggles
  - 1- MLB100C Black Molded Copolymer Carrying Case

No. MBLB100K	Fiberglass Mini Blue Light Brush Kit
--------------	--------------------------------------

Retractable Fiberglass Brush

The perfect brush that gives you more control; you can control the cloud size of the brush. Simply move the retracting shroud to adjust the flair. This gives more protection against contamination, moisture and rough use.

- RFF200 Specifications:**
- Machine-knurled Delrin® shroud assembly
  - Machined Delrin® plastic handle
  - "O" ring friction seal
  - Infinite brush flair adjustment
  - Kit and pocket size—6 3/4" x 1" dia. (17/15cm x 2.54cm)
  - Weight: 2.4 ounces
  - Black Delrin® with custom cap

No. RFF200	Retractable Fiberglass Brush
------------	------------------------------

Fiberglass Sweeper Brush

This brush is an excellent choice for processing automobiles, doors, windows, desktops, and other large surfaces. The brush's precision-machined handle makes it very balanced and comfortable to hold.

- Features:**
- Precision-machined and balanced handle
  - Thousands of "soft-cluster" fiberglass brush filaments
  - Excellent powder retention
  - Large area processing, 4" (10.2cm) wide sweep

No. FGB100	Fiberglass Sweeper Brush
------------	--------------------------



FAC II® Powder/Brush Combination Systems

The FACII® features a unique, patented, self-contained powder delivery system. The system supplies powder directly into the brush filaments with a gentle squeeze of the powder bulb—providing a very neat and efficient processing procedure. Available in a selection of oxide powders—replacement powder bulbs also available for each combination.

The FACII®'s cluster cloud fiberglass brush element may be adjusted by moving the unit's shroud up and down—for total control over both the size and firmness of the brush cluster. After use, simply return the brush's protective sleeve to its original position and place the protective cap on the open end.

FACII® Specifications:

Materials and Finishes:

- Parts and Cap: Machine-knurled Delrin®
- Reservoir: 1 oz. (30ml) plastic bottle

Brush and Fiberglass Filament:

- Cluster Length: 1.87" (4.74cm)
- Cluster Base Diameter: 0.55" (1.4cm)
- Average Cluster Flare Diameter: 3" (7.62cm)

Dimensions:

- Extended Assembly: 6 ½"L (16.5cm)
- Sleeve Retraction: 2"L (5cm)

**Weight:** Fully loaded and assembled: 2.8 oz. (79g)

No. FAC101	Silk Black FACII® System
No. FAC1011	Silk Black Replacement Powder
No. FAC102	Silk Gray FACII® System
No. FAC1021	Silk Gray Replacement Powder
No. FAC103	Indestructible White FACII® System
No. FAC1031	Indestructible White Replacement Powder
No. FAC106	Silver/Black FACII® System
No. FAC1061	Silver/Black Replacement Powder
No. FAC201	Silver/Gray FACII® System
No. FAC2011	Silver/Gray Replacement Powder
No. FAC202	Silver/Red FACII® System
No. FAC2021	Silver/Red Replacement Powder
No. FAC203	Coin Box/Galvanic FACII® System
No. FAC2031	Coin Box/Galvanic Replacement Powder



FACII® +2 Latent Print Kit

The FACII® +2 Latent Print Kit contains the necessary tools to process a crime scene for latent prints with the FACII® Powder/Brush Delivery System. Each kit is supplied with two FACII® brush combinations and a variety of hinge lifters.



FAC1000 Contents:

- 12- 130LT1 Transparent Hinge Lifters, 1.5" x 2" (3.8cm x 5cm)
- 4- 131LT1 Transparent Hinge Lifters, 2" x 4" (5cm x 10cm)
- 4- 131LB1 Black Hinge Lifters, 2" x 4" (5cm x 10cm)
- 4- 131LW1 White Hinge Lifters, 2" x 4" (5cm x 10cm)
- 1- FAC101 Silk Black FACII® Powder/Brush Combination
- 1- FAC103 Indestructible White FACII® Powder/Brush Combination
- 1- KCP224 Carrying Case, Molded Polypropylene; Dimensions: 10 ¾" x 4 ⅞" x 1 ⅛" (26.35cm x 11.75cm x 4.29cm) Weight: 12.8 oz. (362.9g)

No. FAC1000	FACII +2 Latent Print Kit
-------------	---------------------------

Search Marabou Feather Dusters

These feather dusters have dual purpose: to use as a primary powder applicator or as a secondary enhancement brush for regular, fluorescent, and magnetic latent print powders.

Standard Feather Duster

One of our best-sellers, these brushes are used by law enforcement agencies worldwide. Ideally suited for any type of powder. Available in three colors: black, white, and red.

Specifications:

- Handle and Ferrule Length: 4 ⅞" (11.8cm)
- Feather Length: 4 ½" (11.4cm)
- Overall length: 9 ⅞" (23.2cm)



No. 123LB	Marabou Feather Duster, black, 1 ea.
No. 123LW	Marabou Feather Duster, white, 1 ea.
No. 123LR	Marabou Feather Duster, red, 1 ea.



**Pricing Information:**  
For current pricing visit  
www.sirchie.com, or  
call 800.356.7311

**Often Bought Together:**  
Indicates items often  
purchased in conjunction  
with other items.

Whopping Feather Duster

Well-suited for large area applications, this brush has three times the volume of our Standard Duster. Available in black, white or red/white/blue.



Specifications:

- Handle and Ferrule length: 5 ¼" (13.3cm)
- Feather length: 4 ¼" (10.8cm)
- Overall Length: 9 ½" (24.1cm)

No. 123LBW	Whopping Feather Duster, black, 1 ea.
No. 123LWW	Whopping Feather Duster, white, 1 ea.
No. 123LRWB	Whopping Feather Duster, red, white & blue, 1 ea.

Patriot 3™ Feather Dusters

The smallest of our Marabou Feather Dusters features super soft red, white and blue feathers. Ideally suited for risk-free enhancement of previously developed latent prints. Sold in packs of three (3) with individual transparent tubes and caps. Each three-pack is supplied with one red, one white and one blue handle.



Specifications:

- Handle and Ferrule Length: 4 ¾" (12.1cm)
- Feather Length: 2 ¾" (7cm)
- Overall Length: 7 ½" (19.1cm)

No. 123LP3	Patriot 3 Feather Dusters, 3 ea.
------------	----------------------------------

Magnetic Latent Print Powder

Sirchie's high-quality magnetic powders revolutionized the way crime scene technicians approached the task of developing latent prints. Easy-to-use, magnetic powder has become a popular choice among top investigators. Magnetic latent print powders may be used on all non-ferrous evidence including porous and non-porous surfaces. Our larger sizes feature ultra-wide mouths for use with the largest magnetic sweeper wands.



Regular Black Magnetic Powder

Our most popular powder color in magnetic form is finely milled for outstanding quality enhancement. This easy to use powder can be utilized on a wide variety of non-porous, non-ferrous surfaces.



No. M114L	Regular Black Magnetic Powder, 1 oz. (30ml)
No. MSW114L	Regular Black Magnetic Powder, 6 oz. (177ml)
No. BPM114L	Regular Black Magnetic Powder, 16 oz. (473ml)
No. BPM114L128	Regular Black Magnetic Powder, 128 oz. (3,785ml)

Midnight Black Magnetic Powder

Midnight Black latent powder is the darkest black available providing the best contrast on light surfaces. This powder is compounded to offer top quality, exceptional sensitivity and adhesion to the most minute ridge structure.



No. M115L	Midnight Black Magnetic Powder, 1 oz. (30ml)
No. MSW115L	Midnight Black Magnetic Powder, 6 oz. (177ml)
No. BPM115L	Midnight Black Magnetic Powder, 16 oz. (473ml)
No. BPM115L128	Midnight Black Magnetic Powder, 128 oz. (3,785ml)

Indestructible White Magnetic Powder

Use this white powder on dark surfaces for excellent contrast. Indestructible White features the same finely milled iron particles as our black powders, but a white colorant is added during the ball-milling process.



No. M116L	Indestructible White Magnetic Powder, 1 oz. (30ml)
No. MSW116L	Indestructible White Magnetic Powder, 6 oz. (177ml)
No. BPM116L	Indestructible White Magnetic Powder, 16 oz. (473ml)
No. BPM116L128	Indestructible White Magnetic Powder, 128 oz. (3,785ml)

Gray Magnetic Powder

Gray Magnetic Latent Print Powder offers the flexibility of permitting use on light and dark surfaces. This special formulation performs remarkably well on all non-ferrous surfaces, including paper, cardboard and wood.



No. M117L	Gray Magnetic Powder, 1 oz. (30ml)
No. MSW117L	Gray Magnetic Powder, 6 oz. (177ml)
No. BPM117L	Gray Magnetic Powder, 16 oz. (473ml)
No. BPM117L128	Gray Magnetic Powder, 128 oz. (3,785ml)

Red Magnetic Powder

Red Magnetic Latent Print Powder offers extremely good sensitivity, especially good adhesion qualities, and excellent contrast on both light and dark surfaces.



No. M118L	Red Magnetic Powder, 1 oz. (30ml)
No. BPM118L	Red Magnetic Powder, 16 oz. (473ml)
No. BPM118L128	Red Magnetic Powder, 128 oz. (3,785ml)

Silver Magnetic Powder

Silver Magnetic Latent Print Powder can be used on both light and dark surfaces offering the flexibility of a combination powder. Silver Magnetic may be used on most non-porous surfaces and when latent prints are thought to be fresh. It performs well on paper, cardboard and raw wood.



No. M119L	Silver Magnetic Powder, 1 oz. (30ml)
No. MSW119L	Silver Magnetic Powder, 6 oz. (177ml)
No. BPM119L	Silver Magnetic Powder, 16 oz. (473ml)
No. BPM119L128	Silver Magnetic Powder, 128 oz. (3,785ml)

Silver/Black Magnetic Powder

This silver/black magnetic latent print powder will contrast with any color surface. Its unique formulation will develop black on light surfaces and silver on dark surfaces.



No. SBM9	Silver/Black Magnetic Powder, 1 oz. (30ml)
No. MSWSBM9	Silver/Black Magnetic Powder, 6 oz. (177ml)
No. BPMSBM9	Silver/Black Magnetic Powder, 16 oz. (473ml)
No. BPMSBM9128	Silver/Black Magnetic Powder, 128 oz. (3,785ml)

Silver/Gray Magnetic Powder

This powder features the fine adherence properties of silver magnetic powder and the excellent "slip" properties of the gray magnetic powder. It develops gray on light surfaces and silver on dark surfaces.



No. SBM10	Silver/Gray Magnetic Powder, 1 oz. (30ml)
No. MSWSBM10	Silver/Gray Magnetic Powder, 6 oz. (177ml)
No. BPMSBM10	Silver/Gray Magnetic Powder, 16 oz. (473ml)

Silver/Red Magnetic Powder

Our silver/red magnetic latent print powder is a dual-color powder that develops red on light surfaces and silver on dark surfaces.



No. SBM12	Silver/Red Magnetic Powder, 1 oz. (30ml)
No. MSWSBM12	Silver/Red Magnetic Powder, 6 oz. (177ml)
No. BPMSBM12	Silver/Red Magnetic Powder, 16 oz. (473ml)

Magnuclei™ Magnetic Powder

Magnuclei™ is a dual-purpose powder that has been milled to particle sizes that are less than half the size of regular magnetic powders. This powder is very effective on glass, plastic, wood, ceramic, and metallic surfaces — use on paper surfaces without leaving dark backgrounds. It works well on imitation and genuine leather if developed within a short time of being handled.



No. MAG100	Magnuclei™ Magnetic Powder, 1 oz. (30ml)
No. MAG10016	Magnuclei™ Magnetic Powder, 16 oz. (473ml)

Fluorescent Magnetic Latent Print Powder

These fluorescent magnetic latent print powders feature bright pigments, superior ferrous compounds and an anti-smudge additive to ensure superior results when dusting for latent prints. These powders are especially useful when used on multicolored backgrounds. They can be applied with virtually all magnetic powder applicators. View dusting area with an ultra-violet, blue or green forensic light source to see results.



Powder	1 oz. (30ml)	16 oz. (473ml)
REDcharge™	No. LL601	No. LL6012
ORANGEcharge™	No. LL602	No. LL6022
GREENcharge™	No. LL603	No. LL6032
YELLOWcharge™	No. LL605	No. LL6052



**Pricing Information:**  
For current pricing visit  
www.sirchie.com, or  
call 800.356.7311

**Often Bought Together:**  
Indicates items often  
purchased in conjunction  
with other items.

Dazzle Fluorescent Magnetic Powder

Our line of Dazzle Fluorescent Magnetic Latent Print Powders is ideal when dealing with multicolored backgrounds. Prints are visible under natural light, but they give off an intense fluorescent color when viewed with a UV, blue or green light source. Available in Orange, Red, or Yellow.



No. FMP02	Dazzle Fluorescent Orange, 1 oz.
No. FMP03	Dazzle Fluorescent Red, 1 oz.
No. FMP04	Dazzle Fluorescent Yellow, 1 oz.

Fluoromag Magnetic Powder

This powder has a triple advantage to be used on light, dark, or multicolored backgrounds.



No. FMP01	Sliver/Gray Fluoromag, 2 oz.
-----------	------------------------------

Magnetic Powder Applicators

One main advantage of using magnetic wands with magnetic powders is that it's easy to clear surfaces of excess powder, giving maximum photographic effectiveness. Our magnetic applicators can be used with any magnetic powder.

Standard Magnetic Powder Applicator

Ideal for precision dusting of small to medium surface area. The narrow magnet can fit any size powder container.



No. 125LM	Magnetic Powder Applicator, aluminum
No. 125L	Magnetic Powder Applicator, plastic

Megawand Magnetic Powder Applicator

Designed for dusting a large surface area, this wand holds about three times as much powder as the standard wand.



No. 125MD	Megawand Magnetic Applicator
-----------	------------------------------

Magnetic Burnishing Applicator

This wand features an innovative burnishing head to improve the quality of latent lifts. Use the burnishing head to force out any air bubbles and wrinkles from the lifting materials.



No. 125MBA	Magnetic Burnishing Applicator
------------	--------------------------------

Gigamag Magnetic Powder Applicator

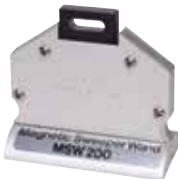
The only choice for maximum coverage, this wands holds the maximum amount of powder of any wand.



No. 125GM	Gigamag Magnetic Applicator
-----------	-----------------------------

Magnetic Sweeper Wand

Ideal for covering large surface area, this wand features a very wide sweep area and the powder capacity of about seven times more than the standard magnetic wand.



No. MSW200	Magnetic Sweeper Wand
------------	-----------------------

Search Regular Magnetic Latent Print Kit



159L Specifications:

- Dimensions: 7" x 5" x 3" (17.78cm x 12.7cm x 7.62cm)
- Net Wt: 2.3 lbs. (1.04kg)

159L Contents:

- 1- M114L Black Magnetic Latent Powder, 1 oz. (30ml)
- 1- M116L White Magnetic Powder, 1 oz. (30ml)
- 1- M117L Gray Magnetic Powder, 1 oz. (30ml)
- 1- SBM9 Silver/Black Magnetic Latent Powder, 1 oz. (30ml)
- 1- 125L Standard Magnetic Applicator
- 1- KCP1000 Molded Plastic Carrying Case with Component Inserts, 7" x 5" x 3"

No. 159L	Regular Magnetic Latent Print Kit
----------	-----------------------------------



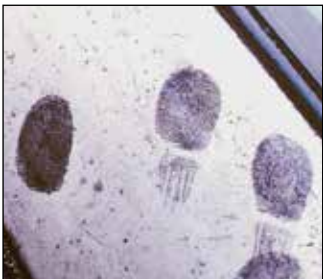
Small Particle Reagent

Small particle reagent (SPR) is quick, inexpensive and effective on fresh fingerprints. It's composed of finely ground particles in a detergent solution. The particles adhere to latent fingerprints and can be lifted using standard lifting methods.

Features include:

- Ideal for non-porous surfaces, such as vehicle exteriors, exterior gloss-painted surfaces, glass, waxed and plastic-coated materials, oily windows, oxidized metals, galvanized surfaces, salt-sprayed surfaces
- Requires cleaning with water to remove reagent residue prior to photography and lifting
- Can be used on wet and dry surfaces

Available in dark (for light surfaces), white (for dark surfaces) and fluorescent (for multi-colored surfaces.)



No. SPR100	Dark SPR, 500ml, 3 ea.
No. SPR200	White SPR, 500ml, 3 ea.
No. SPR400UV	Fluorescent SPR, 500ml, 3 ea.

Adhesive Material Latent Print Development

Adhesive Side Powder

With adhesive side powders, you can lift prints off an adhesive material, such as tapes and labels, duct tape, masking tape, plastic surgical tape, double-sided foam tape, clear plastic tape, reinforced package tape, adhesive bandages, packing labels. Use with EZFLO solution for easy application. Available in black or white; select for surface contrast.



No. ASP50D	Dark Adhesive Side Powder, 50g
No. ASP50L	Light Adhesive Side Powder, 50g
No. ASP51	EZFLO Solution, 6 oz.
No. ASP52	EZFLO Solution, 16 oz.
No. TRA20	Tape Release Agent, 1 oz.

Adhesive Side Developers

This pre-mixed developer can develop latent prints on the adhesive side of tape. Apply to the tape to develop prints.



No. ASD7D	Dark Adhesive Side Developer, 7 oz.
No. ASD7L	Light Adhesive Side Developer, 7 oz.

Un-Stick Adhesive Remover

This product removes adhesive tapes, labels, and stamps without ruining the object it's adhered to; this lets you process the adhesive side of tape for latent prints. Do not use on suede/leather.



No. UNSTK100	Un-Stick, 4 oz.
--------------	-----------------

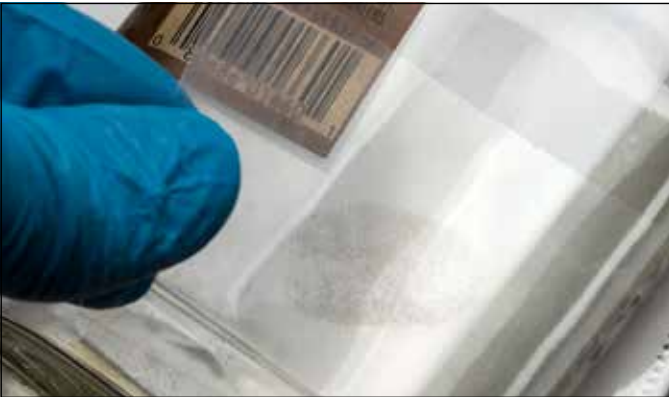


**Pricing Information:**  
For current pricing visit  
www.sirchie.com, or  
call 800.356.7311

**Often Bought Together:**  
Indicates items often  
purchased in conjunction  
with other items.

Fingerprint Lifting Tapes

- Lifting tapes are the most common method in removing a fingerprint from its surface for later study. Effective lifting tapes must have certain characteristics, which all our lifting tapes have:
- Uniform in adhesive coating
  - Air-bubble free
  - Controlled pressure wound to eliminate imperfections
  - Air flow, heat treated to eliminate uneven adhesive



Once a print is developed, you should lift the fingerprint. Please note: if the surface will be destroyed by the lifting tape, lay the tape down on the print to protect it and secure the complete object for transportation.

To lift a print, you should:

- Hold the loose end of the tape with the thumb and forefinger in one hand and the tape roll in the other.
- Pull out enough tape to cover the entire area to be lifted.
- Secure the loose end of the tape beside the print or prints and hold it there with your forefinger.
- Slide your thumb along the top of the tape, forcing it gently down over the print.
- Your other hand should be holding the roll of tape the entire time during this process.
- Carefully, smooth the tape down over the print, forcing out any air bubbles as the thumb moves toward the roll.
- Pull up on the roll end.
- When the tape is completely off the surface, you should transfer it to a backing card or other medium.
- When secured, cut the tape from the roll and fold the loose end over.
- To preserve chain of custody, label the print: who lifted it and where.

Type of Surface	Suggested Lifters
Nonporous, flat surfaces, such as metals (finished, coated), smooth plastic, glass, wood (finished, coated)	Hinge Lifter Lift-O-Tabs Lifting Tape
Nonporous and porous, irregular contour surfaces	Lifting Tape Rubber Lifter
Nonporous, soft substances such as clay, putty, etc.	Liquid Rubber

Transparent and Frosted Lifting Tapes

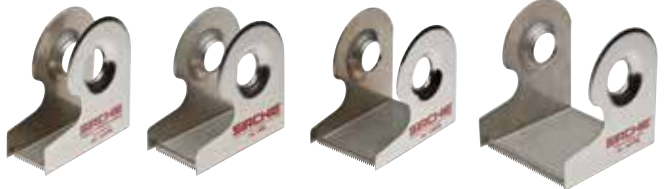
All of our tape sizes and finishes are pressure wound, heat-treated and “fish-eye” free. All sizes fit on standard 1” cores so they can fit our lifting tape dispensers.



No. 144.5L	Transparent Lifting Tape, 1” x 360”, roll
No. 144L	Transparent Lifting Tape, 1 ½” x 360”, roll
No. 144L2	Transparent Lifting Tape, 2” x 360”, roll
No. 145.5L	Frosted Lifting Tape, 1” x 360”, roll
No. 145L	Frosted Lifting Tape, 1 ½” x 360”, roll
No. 145L2	Frosted Lifting Tape, 2” x 360”, roll

Sirchie Fingerprint Lifting Tape Dispensers

Our tape dispensers provide a convenient method for holding, dispensing, and cutting a variety of lifting tape sizes and provide a clean-cut every time. The sharp, high-carbon steel, serrated cutting blades provide a clean cut—every time. Average weight is two ounces. Fabrication: Clear brushed, nickel-plated steel with integral cutting blade to accommodate one inch diameter core size.



No. 145TW	1” (2.54cm) Tape Dispenser
No. 146L	1 ½” (3.81cm) Tape Dispenser
No. 146TW	2” (5.08cm) Tape Dispenser
No. 147TW	3” (7.62cm) Tape Dispenser
No. 148TW	4” (10.2cm) Tape Dispenser

Palm/Cluster Fingerprint Lifting Tapes

These tapes feature the same finishes as our other tapes—just wider to lift a palm print or a cluster of fingerprints. Pressure wound, and heat treated to eliminate “fish-eyes”



No. 144L3	Transparent Lifting Tape, 3” x 360”, roll
No. 144L4	Transparent Lifting Tape, 4” x 360”, roll
No. 145L3	Frosted Lifting Tape, 3” x 360”, roll
No. 145L4	Frosted Lifting Tape, 4” x 360”, roll

Search Transparent Polyethylene Lifting Tape

The perfect choice for lifting developed, powdered prints. For curved or irregular surfaces, this tape adapts to textured, convex, and concave surfaces and is able to withstand strain without damaging prints.



No. 169PPA	Transparent Polyethylene Lifting Tape, 1 ½” x 360”, roll
No. 269PPB	Transparent Polyethylene Lifting Tape, 2” x 360”, roll

Peel and Lift Tape Pads

Lifting prints is easy with our lifting pads, which include 25 pre-cut sheets of tape and the correctly-sized backing cards.



No. PL200	Peel & Lift Tape Pad, 6” x 2”, 25 sheets w/backing
No. PL400	Peel & Lift Tape Pad, 6” x 4”, 25 sheets w/backing

Rubber-Jell Lifting Tape

This tape is a combination of our lifting tape and our Rubber/Jell transparent gel lifting sheets, but on a roll. It's made to conform to most surfaces: smooth, textured, painted, rough, round and many others. Supplied in a dust-free plastic container with screw lid. Tapes are 0.040” thick and are available in three widths.



No. 144LRJ	Rubber-Jell Lifting Tape, 1 ½” x 60”, roll
No. 144L2RJ	Rubber-Jell Lifting Tape, 2” x 60”, roll
No. 144L4RJ	Rubber-Jell Lifting Tape, 4” x 60”, roll

Search Lift-O-Tabs

These individual, pre-cut transparent lifters feature a clear adhesive for maximum clarity. Leave the lifter in place on the surface for print protection or peel the lifter off and mount on the included backing covers. Available in various sizes with transparent, white, or black backers. The No. TLT10 Lift-O-Tabs Combination includes a variety of Lift-O-Tab sizes and backing colors for a total of 108 each Lift-O-Tabs.



LIFT-O-TABS Feature:

- Clear adhesive
- Tab identification for positive viewing
- Three convenient sizes
- Supplied in dust-free plastic boxes
- Plastic backing covers provided with each lifter

No. TLT01	Lift-O-Tabs, 1 ½” x 2” (transparent backers), 24 ea.
No. TLT02	Lift-O-Tabs, 1 ½” x 2” (white backers), 24 ea.
No. TLT03	Lift-O-Tabs, 1 ½” x 2” (black backers), 24 ea.
No. TLT04	Lift-O-Tabs, 2” x 4” (transparent backers), 24 ea.
No. TLT05	Lift-O-Tabs, 2” x 4” (white backers), 24 ea.
No. TLT06	Lift-O-Tabs, 2” x 4” (black backers), 24 ea.
No. TLT07	Lift-O-Tabs, 4” x 4” (transparent backers), 12 ea.
No. TLT08	Lift-O-Tabs, 4” x 4” (white backers), 12 ea.
No. TLT09	Lift-O-Tabs, 4” x 4” (black backers), 12 ea.
No. TLT10	Lift-O-Tabs Combination, 108 ea.

Sirch-Lift Tabs

Get the Lift-O-Tabs on a roll! High-quality fingerprint lifters are pre-cut and packaged on a dispenser. Ready to use anytime without backing materials to remove. Backers sold separately.



Sirch-Lift Specifications:

- Lifters are made of .005” (5 mil) thick clear acetate
- Acrylic adhesive is optically clear, free of “fish eyes” and streaks
- Dispenser carton dispenses tabs one-at-a-time
- A .001” (1 mil) thick polyester liner covers the adhesive and serves as a dispenser mechanism
- Tabs may be backed on any medium

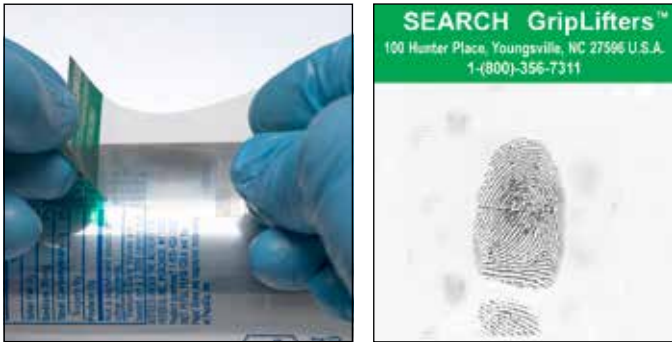
No. SLT100	Sirch-Lift Tabs, 100/roll
No. SLT101	Sirch-Lift Black & White Backers, 100 ea.



**Pricing Information:**  
For current pricing visit  
www.sirchie.com, or  
call 800.356.7311

Search GripLifters

These lifters are made of clear 5 mil Mylar® and a 2 mil liner with adhesive in the middle to provide optimum clarity. They are individually cut to size and pre-scored. GripLifters™ feature a preprinted green grip tab that keeps fingerprints off the lift. Simply grip the lifter by the green tab, remove and discard the cover as indicated. Apply and rub the adhesive side on the latent print and lift using the grip tab. After lifting the print, simply place the GripLifter™ on the appropriate size and color backing card.



No. SGL22	2" x 2" GripLifters, 100 ea.
No. SGL22B	2" x 2" GripLifters w/plain black backing cards, 100 ea.
No. SGL22BP	2" x 2" GripLifters w/printed black backing cards, 100 ea.
No. SGL22W	2" x 2" GripLifters w/plain white backing cards, 100 ea.
No. SGL22WP	2" x 2" GripLifters™ w/printed white backing cards, 100 ea.
No. SGL24	2" x 4" GripLifters, 100 ea.
No. SGL24B	2" x 4" GripLifters w/plain black backing cards, 100 ea.
No. SGL24BP	2" x 4" GripLifters w/printed black backing cards, 100 ea.
No. SGL24W	2" x 4" GripLifters w/plain white backing cards, 100 ea.
No. SGL24WP	2" x 4" GripLifters w/printed white backing cards, 100 ea.
No. SGL44	4" x 4" GripLifters, 100 ea.
No. SGL44B	4" x 4" GripLifters w/plain black backing cards, 100 ea.
No. SGL44BP	4" x 4" GripLifters w/printed black backing cards, 100 ea.
No. SGL44W	4" x 4" GripLifters w/plain white backing cards, 100 ea.
No. SGL44WP	4" x 4" GripLifters w/printed white backing cards, 100 ea.
No. LPW100	3" x 5" white lifted print backing/sketch/record cards, 100 ea.
No. LPB100	3" x 5" black lifted print backing/sketch/record cards, 100 ea.
No. LPW1505	5 1/2" x 8 1/2" white lifted print backing/sketch/record cards, 100 ea.
No. LPB1505	5 1/2" x 8 1/2" black lifted print backing/sketch/record cards, 100 ea.

Search Fingerprint Hinge Lifters

We introduced the hinge lifter in the 1960s and since then, it has become the standard for leading investigative agencies worldwide. Its special adhesive formulation permits clear viewing of prints years after lifting.

Each hinge lifter is easy to use because it combines the lifter and the backing card in a one-piece unit, ready to lift, seal and protect fragile latent fingerprints. The lifter is marked with a star so the print cannot be reversed.

No. 130LT	Trans 1 1/2" x 2" (3.81cm x 5.08cm) Hinge Lifter, 24 ea.
No. 130LW	White 1 1/2" x 2" (3.81cm x 5.08cm) Hinge Lifter, 24 ea.
No. 130LB	Black 1 1/2" x 2" (3.81cm x 5.08cm) Hinge Lifter, 24 ea.
No. 134LT	Trans 2" x 2" (5.08cm x 5.08cm) Hinge Lifter, 24 ea.
No. 134LW	White 2" x 2" (5.08cm x 5.08cm) Hinge Lifter, 24 ea.
No. 134LB	Black 2" x 2" (5.08cm x 5.08cm) Hinge Lifter, 24 ea.
No. 131LT	Trans 2" x 4" (5.08cm x 10.2cm) Hinge Lifter, 12 ea.
No. 131LW	White 2" x 4" (5.08cm x 10.2cm) Hinge Lifter, 12 ea.
No. 131LB	Black 2" x 4" (5.08cm x 10.2cm) Hinge Lifter, 12 ea.
No. 131LT4	Trans 4" x 4" (10.2cm x 10.2cm) Hinge Lifter, 12 ea.
No. 131LW4	White 4" x 4" (10.2cm x 10.2cm) Hinge Lifter, 12 ea.
No. 131LB4	Black 4" x 4" (10.2cm x 10.2cm) Hinge Lifter, 12 ea.

Hinge Lifter Police Special Assortment

Total of 60 hinge lifters consisting of (24 ea.) 1 1/2" x 2", (24 ea.) 2" x 4", (12 ea.) 4" x 4" lifters. Available in black, transparent or white.

**Often Bought Together:**  
(SQB100) Fingerprint  
Lifting Squeegee

No. 132LT	Police Special Assortment, transparent backers
No. 132LW	Police Special Assortment, white backers
No. 132LB	Police Special Assortment, black backers



**Often Bought Together:**  
Indicates items often  
purchased in conjunction  
with other items.

Super Hinge Lifter Assortment

Total of 96 hinge lifters consisting of (16 ea.) 1 1/2" x 2" black, transparent, white; (8 ea.) 2" x 4" black, transparent, white; (8 ea.) 4" x 4" black, transparent, and white lifters.



**Often Bought Together:**  
(SQB100) Fingerprint  
Lifting Squeegee

No. 133LTWB	Super Hinge Lifter Assortment
<b>Hinge Lifter Labels</b>	
These labels are 1 1/2" x 2" and printed green on crack & peel, pressure sensitive stock. They include a space for: Date Lifted, Lifted By and Location. Sold in packs of 100 each.	
No. TLT20C	Hinge Lifter Labels, 100 ea.



Search Write-on Tab Hinge Lifters

You can make critical notes on the write-on tab at the bottom of these hinge lifters, ensuring that they will remain with the evidence. These lifters combine the lifting medium, the backing sheet, and a write-on tab at the base of the backing sheet. Available in white, black, and transparent backers and 3 sizes.



No. LP130LB	Black Write-On Tab Lifter, 1 1/2" x 2" (3.81cm x 5.08cm) , 24 ea.
No. LP130LT	Transparent Write-On Tab Lifter, 1 1/2" x 2" (3.81cm x 5.08cm), 24 ea.
No. LP130LW	White Write-On Tab Lifter, 1 1/2" x 2" (3.81cm x 5.08cm), 24 ea.
No. LP131LB	Black Write-On Tab Lifter, 2" x 4" (5.08cm x 10.2cm), 12 ea.
No. LP131LT	Transparent Write-On Tab Lifter, 2" x 4" (5.08cm x 10.2cm), 12 ea.
No. LP131LW	White Write-On Tab Lifter, 2" x 4" (5.08cm x 10.2cm), 12 ea.
No. LP131LB4	Black Write-On Tab Lifter, 4" x 4" (10.2cm x 10.2cm), 12 ea.
No. LP131LT4	Transparent Write-On Tab Lifter, 4" x 4" (10.2cm x 10.2cm), 12 ea.
No. LP131LW4	White Write-On Tab Lifter, 4" x 4" (10.2cm x 10.2cm), 12 ea.

Write-on Tab Hinge Lifters, Super Assortment

You'll get everything you need in this assortment: it includes the most popular sizes: (32 ea.) 1 1/2" x 2", (24 ea.) 2" x 4", and (24 ea.) 4" x 4" in black, white, and transparent backers.



**Often Bought Together:**  
(SQB100) Fingerprint  
Lifting Squeegee

No. LP133LTWB	Write-on Tab Hinge Lifters Super Assortment
---------------	---

Latent Fingerprint Lifting Squeegee

Smooth out your latent fingerprint tape and hinge lifters and keep air bubbles out. Our new latent fingerprint lifting squeegee is made of durable rubber with flexible ends to make that smoothing out easier.



No. SQB100	Latent Fingerprint Lifting Squeegee
------------	-------------------------------------



Pricing Information:  
For current pricing visit  
www.sirchie.com, or  
call 800.356.7311

Often Bought Together:  
Indicates items often  
purchased in conjunction  
with other items.

EZ-Lifter System

Make the collection, storage, and presentation of powdered latent print lifts easier with the EZ-Lifter System! We've included every step in the process to make your job easier:

- Choose one of the four color-coded sheets and assign a different color for each processing area.
- Once you develop the prints, apply a numbered colored arrow near each print to be lifted and photograph the area to show relationships between each print.
- Using the corresponding lifter, apply the lifter to the print and remove the lifter from the surface. Place the lifter on one of the backing cards.
- Attach the backing card identifier to the same number and fill out important information on the card.
- Once all the lifts have been obtained, place them in the color-coded box and fill out the content labels. It indicates what's in the box and tells technicians where the prints were taken and how many there are.

- EZL100 Contents:**
- 4- 1.875" x 3.5" (4.76cm x 8.89cm) Numbered Lifter Sets (1-12) in Blue, Green, Yellow & Red; each with corresponding Arrow Designator and Backing Card Identifier
  - 48- EZL100BC Backing Cards
  - 1- Filing Box with color

No. EZL100EZ-Lifter System



Expanded EZ-Lifter Family

Get our EZ-Lifters but with an attached horizontal and vertical scale, using metric measurements (the format used by most crime laboratories and ID technicians). Available in a variety of sizes with backing sheets and ID labels.

- EZ-LIFTER™ Contents:**
- 12- EZ-LIFTERS™; 1.5" x 1.5" (40mm x 40mm); 2.375" x 1.5" (60mm x 40mm); 2.375" x 2.375" (60mm x 60mm); 3.5" x 2.375" (90mm x 60mm); or 3.5" x 3.5" (90mm x 90mm)
  - 12- White Vinyl Backing Sheets
  - 12- TLT-20 ID Labels

No. EZL4040M	EZ-Lifters, 1 ½" x 1 ½", 12 ea.
No. EZL6040M	EZ-Lifters, 2 ¾" x 1 ½", 12 ea.
No. EZL6060M	EZ-Lifters, 2 ¾" x 2 ¾", 12 ea.
No. EZL9060M	EZ-Lifters, 3 ½" x 2 ¾", 12 ea.
No. EZL9090M	EZ-Lifters, 3 ½" x 3 ½", 12 ea.

Search Transparent Palm/Cluster Lifters

These 6" x 9" lifters are designed to lift powder-developed palm prints or multiple fingerprints. Lifters are transparent and pre-assembled with an attached backing sheet. Colors available are transparent, black or white.

No. 135LT	6" x 9" Palm/Cluster Lifter, trans backing, 12 ea.
No. 135LB	6" x 9" Palm/Cluster Lifter, black backing, 12 ea.
No. 135LW	6" x 9" Palm/Cluster Lifter, white backing, 12 ea.

Footprint Residue Lifters

These 6" x 15" lifters are the ideal shape for lifting footprints. Coated with a supersensitive acrylic adhesive, it lifts the most minute particles. Transparent, black or white backing sheets are included.



No. FR001	Footprint Residue Lifter, trans backing, 12 ea.
No. FR001BL	Footprint Residue Lifter, black backing, 12 ea.
No. FR001WH	Footprint Residue Lifter, white backing, 12 ea.



GEL Lifters

Search GEL Footprint Lifters

These lifters are ideal for lifting foot or footwear prints from dusty and/or dirty surfaces. They are particularly useful when dealing with lightly covered surfaces because they don't generate static electricity like standard lifting tapes can. Includes two 6" x 15" GEL footprint lifters—one black and one white.

No. 647C100GEL Footprint Lifters, (1 ea. black & 1 ea. white)

Search GEL Fingerprint Lifters

Used exclusively by some of the major investigation bureaus in the world, these lifters have an exceptional adhesive face designed to pick up all powder traces from developed prints, without adhering to the surface. They're extremely useful for highly grained surfaces and irregular/curved surfaces. Easy to use by simply removing the protective cover, lift the print, and replace the cover for protection. Available in black and white and in assorted sizes.

No. 126LW	White GEL Fingerprint Lifters, 2" x 2" (5.08cm x 5.08cm), 12 ea.
No. 126LB	Black GEL Fingerprint Lifters, 2" x 2" (5.08cm x 5.08cm), 12 ea.
No. 127LW	White GEL Fingerprint Lifters, 2" x 4" (5.08cm x 10.16cm), 12 ea.
No. 127LB	Black GEL Fingerprint Lifters, 2" x 4" (5.08cm x 10.16cm), 12 ea.
No. 127LT	Trans GEL Fingerprint Lifters, 2" x 4" (5.08cm x 10.16cm), 12 ea.
No. 128LW	White GEL Fingerprint Lifters, 3" x 4" (7.62cm x 10.16cm), 12 ea.
No. 128LB	Black GEL Fingerprint Lifters, 3" x 4" (7.62cm x 10.16cm), 12 ea.
No. 129LW	White GEL Fingerprint Lifter, 4" x 10" (10.16cm x 25.4cm), 1 ea.
No. 129LB	Black GEL Fingerprint Lifter, 4" x 10" (10.16cm x 25.4cm), 1 ea.

Search GEL Palm/Cluster Lifters

Use these GEL lifters for palm prints or multiple prints. The 7" x 9" size is ideal for a full handprint. Sold in packs of six each.

No. 125LW	White GEL Palm/Cluster Lifters, 7" x 9", 6 ea.
No. 125LB	Black GEL Palm/Cluster Lifters, 7" x 9", 6 ea.



Thumb & partial palm print lifted with 127LW.

GELifters

GELifters™ are constructed of high-quality latex and a bonded low-tack adhesive gelatin layer. They're ideal for lifting dust prints (footwear) and powder-developed latent fingerprints.

GELifters™ are a perfect solution when tape and other methods may not be the ideal lifting solution.



Palm Print developed with black latent print powder, and lifted from a curved plastic surface with GLT101W.

No. GLT101B	Black GELifters™, 5.2" x 7.2" (13.2cm x 18.28cm), 10 ea.
No. GLT101T	Transparent GELifters™, 5.2" x 7.2" (13.2cm x 18.28cm), 10 ea.
No. GLT101W	White GELifters™, 5.2" x 7.2" (13.2cm x 18.28cm), 10 ea.
No. GLT201B	Black GELifters™, 5.2" x 14.4" (13.2cm x 36.58cm), 2 ea.
No. GLT201T	Transparent GELifters™, 5.2" x 14.4" (13.2cm x 36.58cm), 2 ea.
No. GLT201W	White GELifters™, 5.2" x 14.4" (13.2cm x 36.58cm), 2 ea.
No. GLT301B	Black GELifters™, 7" x 7" (17.78cm x 17.78cm), 5 ea.
No. GLT301T	Transparent GELifters™, 7" x 7" (17.78cm x 17.78cm), 5 ea.
No. GLT301W	White GELifters™, 7" x 7" (17.78cm x 17.78cm), 5 ea.
No. GLT401B	Black GELifters™, 7.1" x 14.2" (18.03cm x 36.06cm), 2 ea.
No. GLT401T	Transparent GELifters™, 7.1" x 14.2" (18.03cm x 36.06cm), 2 ea.
No. GLT401W	White GELifters™, 7.1" x 14.2" (18.03cm x 36.06cm), 2 ea.





**Pricing Information:**  
For current pricing visit  
www.sirchie.com, or  
call 800.356.7311

**Often Bought Together:**  
Indicates items often  
purchased in conjunction  
with other items.

SirchSil™ Evidence Recovery Kit

Lift tool marks, bite marks, and latent prints with this kit. Easy to use, it eliminates guesswork by mixing the exact proportions needed. It's the perfect method for lifting powdered latent prints from textured, irregular, or curved surfaces and the transparent formula lets you view the print while applying the mixture.



PVS200 Contents:

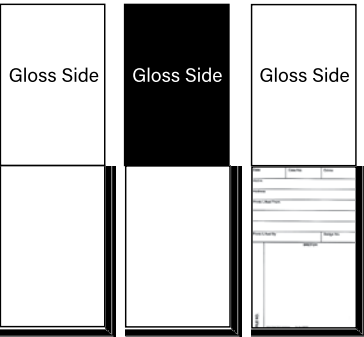
- 1- PVS200EG Extruder Gun
- 24- PVS200N1 Mixing Nozzles
- 12- PVS200NT1 Spreader Tips
- 1- PVSS200WH White Cartridge, 75ml
- 1- PVSS200BN Brown Cartridge, 75ml
- 1- PVSS200TR Transparent Cartridge, 75ml
- 10- PVS200AS Applicator Sticks
- 1- Molded Plastic Carrying Case w/pre-cut insert; Dimensions: 14" x 10" x 3 3/8" (35.5 x 25.4cm x 9.2cm) Weight: 2.85 lbs. (1.3kg)

No. PVS200	SirchSil™ Evidence Recovery Kit
No. PVSS200WH	SirchSil™ Replacement White Cartridge, 75 ml
No. PVSS200TR	SirchSil™ Replacement Transparent Cartridge, 75 ml
No. PVSS200BN	SirchSil™ Replacement Brown Cartridge, 75 ml
No. PVSS200BNW	SirchSil™ Wintry Brown Cartridge, 75 ml
No. PVSS200GY	SirchSil™ Gray Cartridge, 75 ml
No. PVSS200GYW	SirchSil™ Wintry Gray Cartridge, 75ml
No. PVSS200BK	SirchSil™ Black Cartridge, 75 ml
No. PVS200NT	Replacement Spreader Tips, 40 ea.
No. PVS200N	Replacement Nozzles, 40 ea.
No. PVS200EG	Replacement Extruder Gun

Lifted Print Backing Cards and Sheets

Search Lifted Print Backing Cards

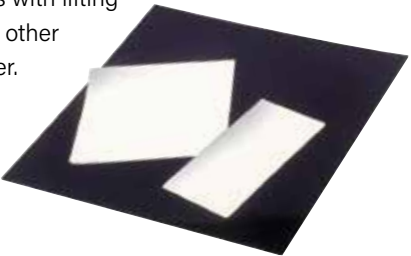
Our lifted print backing cards offer quality at an economical price. 50 backing sheets are bound into pads with a tear-resistant cover that won't fall apart. Available in high-gloss black on one side (white on the other) and a high-gloss white stock.



No. LB001	Gloss White Backing Card Pad, 5 1/2" x 8 1/2" (13.97cm x 21.59cm)
No. LB002	Gloss White Backing Card Pad, 2 1/4" x 4" (5.71cm x 10.14cm)
No. LB003	Gloss White Backing Card Pad, 3" x 5" (7.62cm x 12.7cm)
No. LB0011	Gloss Black Backing Card Pad, 5 1/2" x 8 1/2" (13.97cm x 21.59cm)
No. LB0021	Gloss Black Backing Card Pad, 2 1/4" x 4" (5.71cm x 10.14cm)
No. LB0031	Gloss Black Backing Card Pad, 3" x 5" (7.62cm x 12.7cm)
No. LB001SP	Gloss White/Sketch Card Pad, 5 1/2" x 8 1/2" (13.97cm x 21.59cm)

Rigid Plastic Vinyl Backing Sheet

Use these backing sheets with lifting tapes, Lift-O-Tabs, or any other transparent or frosted lifter. They reduce the risk of damage to latent prints that may be caused by inadvertent folding of paper backing cards. Available in 3 sizes and 3 finishes.



No. LB201	White Rigid Backing Sheet, 2" x 4" (5.08cm x 10.16cm), 30-pk.
No. LB202	Black Rigid Backing Sheet, 2" x 4" (5.08cm x 10.16cm), 30-pk.
No. LB203	Transparent Rigid Backing Sheet, 2" x 4" (5.08cm x 10.16cm), 30-pk.
No. LB204	White Rigid Backing Sheet, 4" x 4" (10.16cm x 10.16cm), 20-pk.
No. LB205	Black Rigid Backing Sheet, 4" x 4" (10.16cm x 10.16cm), 20-pk.
No. LB206	Transparent Rigid Backing Sheet, 4" x 4" (10.16cm x 10.16cm), 20-pk.
No. LB207	White Rigid Backing Sheet, 8" x 8" (20.32cm x 20.32cm), 10-pk.
No. LB208	Black Rigid Backing Sheet, 8" x 8" (20.32cm x 20.32cm), 10-pk.
No. LB209	Transparent Rigid Backing Sheet, 8" x 8" (20.32cm x 20.32cm), 10-pk.

Lifted Print Backing/Sketch/Record Cards

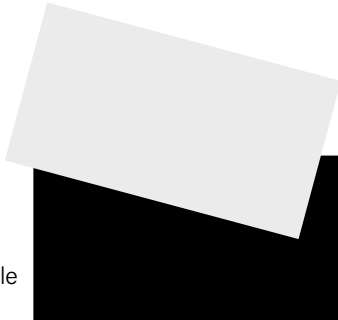
After lifting a print, place the tape on one side of this card and on the other, record case information and rough sketch of the print locations. This ensures the information will stay with the evidence. Available in black or white and in a variety of sizes.



No. LPB100	Backing/Sketch/Record Cards (black), 3" x 5", 100-pk.
No. LPB1005	Backing/Sketch/Record Cards (black), 3" x 5", 500-pk.
No. LPW100	Backing/Sketch/Record Cards (white), 3" x 5", 100-pk.
No. LPW1005	Backing/Sketch/Record Cards (white), 3" x 5", 500-pk.
No. LPB1505	Backing/Sketch/Record Cards (black), 5 1/2" x 8 1/2", 100-pk.
No. LPW1505	Backing/Sketch/Record Cards (white), 5 1/2" x 8 1/2", 100-pk.

Search Reversible Backing Cards

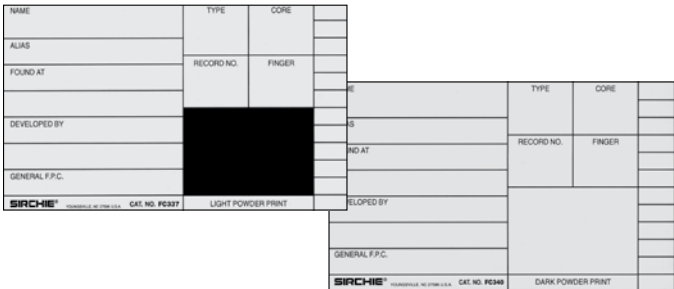
The choice of many federal law enforcement agencies, these 3" x 5" cards have a high-gloss black finish on one side and a white, matte finish on the other side. Discounts available when ordering in bulk.



No. FC343	3" x 5" Reversible Backing Cards, 100 ea.
-----------	---

Combination Backing/Record Cards

These 3" x 5" cards are primarily designed for single powder-dusted fingerprints lifted with tape or Lift-O-Tabs. Space is included for recording pertinent crime scene data. Discounts available when ordering in bulk.



No. FC337	3" x 5" Combo Backing/Record Cards, black, 100 ea.
No. FC340	3" x 5" Combo Backing/Record Cards, white, 100 ea.

Search Fingerprint Evidence Tape

This red on white tape identifies processed latent print articles that are ready for photography. Investigators' "initial" squares are part of the format.



No. 905E	Fingerprint Evidence Tape, 1" x 500", roll
----------	--

Cyanoacrylate Fuming

Super Glue Vapor, ethyl or methyl cyanoacrylate chemically reacts with most latent fingerprints to produce a white, hard deposit of the print. Features of cyanoacrylate are:



- Use it to develop prints on non-porous materials, such as plastics, metal, fabrics, glass, or unfinished woods.
- Not recommended for more porous materials or old fingerprints
- Simple to use and very effective
- Accelerated development time and sensitivity
- Magnetic powder, fluorescent powder, basic yellow, ardrex, rhodamine will all enhance with cyanoacrylate.

Omega-Print Cyanoacrylate Fuming Compound

Ideal for smaller departments that don't need a large quantity of cyanoacrylate, this compound is supplied with a drop dispensing cap that is re-sealable to ensure the integrity of the solution while in storage.

**Often Bought Together:**  
(CNA104) Omega-Print Dispersal Pads, (CNA106) Omega-Print Fuming Trays



No. CNA102	Cyanoacrylate Fuming Compound, 20g
------------	------------------------------------



**Pricing Information:**  
For current pricing visit  
[www.sirchie.com](http://www.sirchie.com), or  
call 800.356.7311

**Often Bought Together:**  
Indicates items often  
purchased in conjunction  
with other items.

Omega-Print  
Fingerprint  
Developer

The leading choice of many law enforcement agencies throughout the world, Omega-Print comes with four applicator bottles to maintain the integrity of the bulk container. Ideal for departments that process a large number of latent prints.



**Often Bought Together:**  
(CNA104) Omega-Print Dispersal Pads, (CNA106) Omega-Print Fuming Trays

No. CNA103      Cyanoacrylate w/4 ea. applicator bottles, 16 oz.

Omega-Print Dispersal Pads

Use these dispersal pads with our cyanoacrylate liquid fuming compounds. Acting as a catalyst, these pads will accelerate the fuming process resulting in shorter development times.



**Often Bought Together:**  
(CNA103) Omega-Print Fingerprint Developer

No. CNA104      Omega-Print Dispersal Pads, 100 ea.

Omega-Print Disposable  
Fuming Trays

These aluminum trays are designed to accelerate fuming with liquid cyanoacrylate. Use these trays with or without our dispersal pads.



**Often Bought Together:**  
(CNA103) Omega-Print Fingerprint Developer

No. CNA106      Disposable Fuming Trays, 25 ea.

No. CNA106C      Disposable Fuming Trays, 100 ea.

The Finder

The Finder is a safe, simple, and convenient cyanoacrylate latent print processing system completely self-contained in a foil packet.



- 
- To use:**
- Place the packet horizontally or vertically in a fuming chamber, without dripping any glue.
  - Simply peel the foil packet apart and let the fumes react with latent fingerprint residues to produce the most durable cyanoacrylate-developed prints possible.
  - Packets may be used for more than one fuming session. Reseal the packet and use until exhausted (usually about 15 hours, depending on conditions).
  - With The Finder, you can fume small objects or areas as large as vehicle interiors.



No. CNA2000	Cyanoacrylate Packets, 5 ea.
No. CNA2001	Cyanoacrylate Packets, 20 ea.
No. CNA2002	Cyanoacrylate Packets, 100 ea.

Cyano-Bloc Fuming  
Chamber Pre-  
Treatment Pads

Protect your unused fuming chamber from cyanoacrylate-induced film with Cyano-Bloc.



These pretreated pads are specially formulated to protect new chambers made of polycarbonate material or glass.

- 
- To use:** Wipe the interior surfaces of your fuming tank with the pre-treated pad and allow to air dry. Apply a second coat, then wet the supplied dry pad with water and wipe interior surfaces again.



No. CNA110      Cyano-Bloc Pads, 5 ea.

Cyanowand Kit

The Cyanowand is an easy-to-use, portable, hand-held heat generator that uses disposable cyanoacrylate cartridges to emit cyanoacrylate vapor for fuming latent prints. The Cyanowand is ideal for outdoor crime scenes, stolen vehicles, and well-ventilated indoor areas with fuming chambers.



Sirchie has reengineered our CyanoWand cyanoacrylate fuming kit and replacement cartridges to make your life easier. The new torch and cartridges feature threaded male and female ends to offer a secure fit while fuming.



CW101 Specifications:

- Overall length with heat tip: 246.3mm (9.7")
- With heat tip and cartridge: 267.6mm (10.537")
- Weight (when gas filled): 126g (4.4 oz.)
- Gas Container Capacity: 28ml (1.6 cu. in.)
- Operating Time: Maximum 4 hours
- Ignition System: Piezoelectric (requires no batteries)

CW100 Contents:

- 1- CW101 Cyanowand Heat Generator with Protective Head Cover
- 1- SCW103 Butane Fuel Can, 1.3 oz.
- 1- SCW104 Cartridge Extraction Tool
- 1- CW200 Cyanowand Cartridges, 10
- 1- SCW105 Copolymer Carrying Case with Foam Insert

No. CW100      Cyanowand Kit

Cyanowand Cartridges

We supply these easy-to-use cartridges already pre-loaded with cyanoacrylate. **For use with our Cyanowand (No. CW100).**

- Standard cartridges** will emit vapor for about two minutes. *These are an exact replacement cartridge for those supplied with the CW100 Kit.*
- Mega cartridges** will emit vapor for about four minutes.
- Hulk cartridges** will emit vapor for about one hour or 10 five minute burns.



No. CW200	Standard Cartridges, 10 ea.
No. CW300	Mega Cartridges, 10 ea.
No. CW4001	Hulk Cartridge, 1 ea.
No. CW400	Hulk Cartridges, 4 ea.

Cyanowand Butane Fuel

This butane fuel comes with nozzles for direct refilling of the Cyanowand.

**Often Bought Together:**  
(No. CW100) Cyanowand Kit



No. SCW103	Butane Fuel Can, 1.3 oz.
No. SCW1035	Butane Fuel Can, 5.82 oz.

The Cyano-Shot Latent  
Print Developing System

This popular product uses the developmental properties of cyanoacrylate, creating an abundant amount of heat which decreases fuming time and provides quality ridge detail.



Place the activator canister (hole side down) into the jar containing the activator solution.



Empty glue onto the metal top of activator canister.

Cyano-Shot Contents:

- 1- CNA300 60cc Jar with Activator Solution
- 1- HG1 Activator Crystals
- 1- CNA1 Cyanoacrylate

No. CNA3006	Cyano-Shot, 6 ea.
No. CNA3012	Cyano-Shot, 12 ea.
No. CNA3024	Cyano-Shot, 24 ea.
No. CNA3072	Cyano-Shot, 72 ea.



**Pricing Information:**  
For current pricing visit  
www.sirchie.com, or  
call 800.356.7311

Ultra Cyano-Shot

Ultra Cyano-Shot™ features the same latent print development properties as our regular Cyano-Shot™, but fuming time lasts up to 20 minutes. This extra time allows you to develop latent prints in larger enclosed areas.



CNA4000 Contents:

- 1- KCP198 Plastic Development Container, 1 qt.
- 1- CNA400 Activator Solution, 2 oz. (60ml)
- 1- HG2 Activator Crystals, 180gms
- 1- CNA5 Cyanoacrylate, 5ml

No. CNA4000 Ultra Cyano-Shot, 1 ea.

CyanoPowder

Unlike cyanoacrylate liquid which can harden over time rendering it unusable, CyanoPowder has an unlimited shelf life, and can be stored indefinitely. It's easier to handle and safer than liquid glue, designed specifically for lab safety and development performance. Additionally, it's an environmentally friendly alternative to liquid glues, helping labs cut waste and save money. Available in six packs or 30 grams in bulk packs.



**Note:** CyanoPowder must be developed at 500° F. Use with our Fuming Hotplate (HP110) or the Dual Temp Fuming Chamber (FR200DT).

**Often Bought Together:**  
(CNA106) Disposable Fuming Trays,  
(HP110) Hotplate, (FR200DT) Dual  
Temp Fuming Chamber

No. CYP15 CyanoPowder, 1.5g singles, 6 ea.

No. CYP30 CyanoPowder, 30g bulk pack

Fuming Hotplate

Accelerate cyanoacrylate development with this fuming hot plate. Once you place it into your fuming chamber, add 5-10 drops of OMEGA-PRINT liquid in a fuming tray. Prints develop in minutes.



**Often Bought Together:**  
(CNA106) Disposable Fuming Trays

No. FHP100 Fuming Hot Plate, 110V AC

Laboratory Hotplate

These hotplates feature an exceptionally durable, chemical resistant white ceramic work surface. Their space-efficient design (8" X 9" footprint), makes them ideal for use on crowded benchtops and inside of bio-hoods.



**Often Bought Together:**  
(CNA106) Disposable Fuming Trays

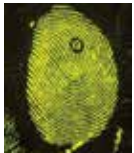
No. HP110 Laboratory Hotplate, 110V AC

Cyanoacrylate Staining Agents

Staining agents or dyes are useful when developing prints against multi-colored or patterned backgrounds. After staining, view prints with ultraviolet or alternate light sources to see prints fluoresce.

Basic Yellow Powder

Basic Yellow is a fluorescing dye excellent for enhancing cyanoacrylate developed latent prints on multi-colored surfaces. Basic Yellow fluoresces brilliantly under ultraviolet or 455nm blue ALS.



**Note:** Basic Yellow Powder must be mixed into a working solution before use. Mixing instructions included.

No. LV507 Basic Yellow, 25g powder

Basic Yellow Spray

Prints enhanced with Basic Yellow fluoresce bright yellow/green under UV or 455nm light. Basic Yellow Spray is supplied in a 500ml bottle with a spray head for convenient application.



LVS500 Basic Yellow Spray, 500ml bottle

Rhodamine 6G Powder

Rhodamine 6G dye is used for enhancing latent prints developed with cyanoacrylate. Use a green (520nm) ALS with a red barrier filter to photograph prints enhanced with Rhodamine 6G.



**Note:** Rhodamine 6G Powder must be mixed into a working solution before use. Mixing instructions included.

No. LV505 Rhodamine 6G, 25g powder

**Often Bought Together:**  
Indicates items often  
purchased in conjunction  
with other items.

Ardrox Dye Liquid

Cyanoacrylate fumed prints treated with ardrox fluoresce yellow/green under longwave UV light in the 365nm range. Available in 500ml pump spray or buy the concentrate (946ml jug).



No. LVS600 Ardrox Dye Liquid, 500ml bottle

No. LVS700 Ardrox Dye Liquid Concentrate, 946ml jug

RAM After Fuming Fluorescent Dye Stain

RAM dye stain is a fluorescent mixture of Rhodamine, Ardrox, and MBD. RAM enhanced latent prints are visualized between 415nm and 530nm, making it ideal for use with a wide variety of forensic light sources.



No. LVS650 RAM Dye Stain, 500ml

RAY After Fuming Fluorescent Dye Stain

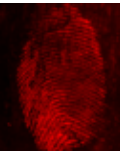
RAY dye stain is a mixture of Basic Red, Ardrox, and Basic Yellow. Visualize and photograph treated prints with a forensic light source between 365nm and 550nm.



No. LVS660 RAY Dye Stain, 500ml

Safranin O/Basic Red 2

This fluorescent dye is used to stain cyanoacrylate-developed latent prints. Available as 25 gram powder or 500ml solution.



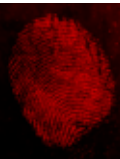
**Note:** Powder version must be mixed into a working solution before use. Mixing instructions included.

No. LV610 Safranin O/Basic Red 2 (25 gram powder)

No. LV610L Safranin O/Basic Red 2 (500ml solution)

Basic Red 14

This fluorescing dye is used to stain cyanoacrylate developed latent prints. It can be used alone or mixed with Basic Yellow to provide a wider range of fluorescence. Available as 25 gram powder or 500ml solution.



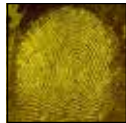
**Note:** Powder version must be mixed into a working solution before use. Mixing instructions included.

No. LV620 Basic Red 14 (25 gram powder)

No. LV620L Basic Red 14 (500ml solution)

Lumicyano

Lumicyano allows, with a one-step process, both cyanoacrylate fuming and dyeing of fluorescent fingerprints in standard fuming chambers. It removes the post-processing stage of dyeing or dusting with powder. Instead, fingerprints become fluorescent immediately. Available in a 25 cycles (20g) kit, 125 cycles (100g) kit, 20g bottle and powder form.



No. LC120 Lumicyano, 20g kit (25 cycles)

No. LC5100 Lumicyano, 100g kit (125 cycles)

No. LCP5 Lumicyano Powder, 5g bottle

No. LCS200 Lumicyano Solution, 20g bottle, 10 ea.

Iodine Fuming Products

The Fumette Disposable Iodine Fuming Gun

Iodine fuming is very effective for fuming walls and woodwork. The Fumette's design lets you fume vertical and horizontal surfaces and is excellent for small objects. You can control the amount of iodine vapor the whole time.



Once you're finished, simply dispose of the whole assembly.

Features:

- All plastic outer casing
- Pre-measured 2.0-gram iodine crystal ampoule
- No leakage—may be stored or carried anywhere
- Simple to use, efficient and totally effective
- Disposable and economical



No. DF2016 Fumette Iodine Fuming Gun, 6 ea.

Search Iodine Print Enhancers

To use Iodine Print Enhancers lightly break the enclosed glass ampoule inside the tube, remove the red cover, and lightly dab iodine-fumed prints to enhance and fix.



No. DCA16 Iodine Print Enhancers, 6 ea.



Pricing Information:  
For current pricing visit  
www.sirchie.com, or  
call 800.356.7311

Iodette Ampoules

Ideal for processing fresh prints (up to 48 hours) in the lab or in the field, use these ampoules for prints on most porous surfaces. They have the added bonus of having an unlimited shelf life and convenient to use.

No. AMP2066 Iodette Ampoules, 6 ea.

Search Iodine Crystal Ampoules

These ampoules are perfect for storing in kits because there's no vapor loss possible. Sealed in glass ampoules, simply break at pre-scored neck when you want to use.

No. A211C Iodine Crystal Ampoules, 6 ea.

IO-Fume Instant Vaporizer

You don't need to add heat to develop iodine prints, IO-Fume generates its own heat. Use with any fuming chamber.



Empty iodine crystals onto the metal top of activator canister, then place the activator canister (hole side down) into the jar containing the activator solution.

No. LPF1006 IO-Fume Instant Vaporizer, 6 ea.

Electrofume Iodine Fumer

This kit provides a dual purpose for you: a safety measure by putting distance between you and the iodine fumes. Additionally, it's a quick, efficient means of developing latent prints on porous surfaces, such as paper, cardboard, raw wood, etc.



FUM250 Specifications:

Dimensions: 3.125" x 5.75" x 1.625" (7.9cm x 14.6cm x 4.1cm)  
Weight w/batteries: 14.1 oz. (400g)

FUM250 Contents:

- 1- FUM250 ElectroFume™ Iodine Fumer
- 2- D-Cell Alkaline Batteries
- 8- DF201 Fumette Disposable Iodine Fuming Guns
- 8- DCA1 Iodine Print Enhancers
- 1- FUM250CC Black Molded Copolymer Carrying Case, Textured;  
Dimensions: 8 ½" x 7 ¾" x 3 ⅝" (21.6cm x 19.7cm x 9.2cm); Weight: 2.03 lbs. (921g)

No. FUM250 Electrofume Iodine Fumer

Ninhydrin Products

**Note:** Use *ninhydrin* after *iodine* and before *silver nitrate*.



You'll need ninhydrin when developing prints to use after iodine and before silver nitrate. The ninhydrin process is:

- Ideal for latent prints and blood-contaminated prints on porous surfaces, such as paper, cardboard, paper cartons, currency, raw wood, plasterboard, etc.
- Not to be used on non-porous surfaces and wet articles
- Produces a colored image, which may vary from orange to purple depending on the print and conditions.
- Full development may take several weeks to occur but this can be accelerated through heating and humidification.
- Simple to use and very effective; detects prints months or years old.

Ninhydrin Spray

The most popular ninhydrin formulation in the world, it has developed prints over two-years-old in actual cases and 50-year-old prints in experimental cases. Available in 6 oz and 16 oz aerosol cans.



**Often Bought Together:** (DFC100) Development Control Chamber, (214CA) Fuming Cabinet & Heat Chamber

No. 201C Ninhydrin Spray, 11 oz. (net wt) aerosol

No. 202C Ninhydrin Spray, 4 oz. (net wt) aerosol

Ninhydrin Spray with Acetone

This spray is recommended by leading experts in the latent print processing field for increased sensitivity.



**Often Bought Together:** (DFC100) Development Control Chamber, (214CA) Fuming Cabinet & Heat Chamber

No. 201ACE Ninhydrin Spray w/Acetone, 11 oz. (net wt) aerosol

Ninhydrin Crystals

Perfect for agencies that mix their own formulations. Sensitivity to Amino Acids ( Color Pons Test), Solubility in Water (Clear and Complete), Loss on Drying at 105°C (Not More Than 11.0%)



No. NRP01A Ninhydrin Crystals, 25g jar

No. NRP02B Ninhydrin Crystals, 100g jar

No. NRP03C Ninhydrin Crystals, 500g jar

**Often Bought Together:** Indicates items often purchased in conjunction with other items.

Special Formula Ninhydrin Spray

This spray is ideal for developing latent prints on paper because it eliminates the ink from running. Available in 8 oz and 128 oz.



**Often Bought Together:** (DFC100) Development Control Chamber, (214CA) Fuming Cabinet & Heat Chamber

No. NSI609 Special Formula Ninhydrin Spray, 8 oz.

No. NSI609G Special Formula Ninhydrin, 128 oz.

Ninhydrin Pump Spray

This spray is specially formulated for recovering latent prints on carbonless and heat-transfer (thermal) papers. It's free of staining reagents so it won't turn paper black or purple and won't cause ink to run.



**Often Bought Together:** (DFC100) Development Control Chamber, (214CA) Fuming Cabinet & Heat Chamber

No. NHT609 Ninhydrin Pump Spray, 8 oz.

Ninhydrin Fixative

To prevent fading, use this Ninhydrin Fixative to preserve ninhydrin developed latent prints after they've been photographed. In some cases, this fixative can also enhance developed prints.



**Often Bought Together:** (201C) Ninhydrin Spray, (201ACE) Ninhydrin Spray w/Acetone

No. NFS200 Ninhydrin Fixative, 8 oz.

Ninhydrin Clearing Agent

Standard formulations of ninhydrin can cause thermal papers to turn dark, obscuring fingerprints. Treatment with the clearing agent will remove the darkened layer and uncover developed fingerprints.



**Often Bought Together:** (201C) Ninhydrin Spray, (201ACE) Ninhydrin Spray w/Acetone

No. NCL500 Ninhydrin Clearing Agent, 16 oz.

Latent Print Standards Pad

Verify that chemicals used for development of latent prints are working properly. Pad is designed to be used for all chemical tests that involve sebaceous oils, amino acids, or salts including: *iodine*, *DFO*, *ninhydrin*, *silver nitrate*, *physical developer*. Simply touch the pad and apply print to a standards card for processing.



No. LPSP200 Latent Print Standards Pad

DFO (1,8-Diazafluoren-9-one)

DFO is a fluorescence agent that attaches to latent print residues and causes them to emit light when illuminated with a UV light or alternate light sources. This is especially useful for multi-colored surfaces. DFO will process prints slowly unaided and applying heat will accelerate development. It's ideal for using after ninhydrin; studies report that DFO use improves the results gained by ninhydrin. Available in a spray or powder (for labs making their own formulations).



**Often Bought Together:** (DFC100) Development Control Chamber, (DFC200) Development Control Chamber

No. DFS300 DFO Pump Spray, 100ml

No. DFS300H DFO (HFE formula) Pump Spray, 100ml

No. LV500 DFO Powder, 1g

No. LV5001 DFO Powder, 5g

No. LV500L DFO Powder, 50g

DFO and Ninhydrin Support Products

3M Novec HFE7100 Fluid

Researched by worldwide agencies, this fluid is an ideal carrier for ninhydrin and DFO. The advantage is for the investigator and the environment because HFE replaces the carrier solvent CFC-113.



**Often Bought Together:** (NRP01A) Ninhydrin Crystals, (LV500) DFO Powder

No. NS7100 3M™ NOVEC™ HFE7100 Fluid, 1 gal

No. NS7100X 3M™ NOVEC™ HFE7100 Fluid, 10 liters



Pricing Information:  
For current pricing visit  
www.sirchie.com, or  
call 800.356.7311

1,2-Indanedione

1,2-Indanedione is a low cost substitute for DFO. Like DFO and ninhydrin, 1,2-Indanedione reacts to amino acid residues on porous surfaces. Developed prints can be difficult to see in normal light, but strongly fluoresce when exposed to 455nm blue light viewed through an orange barrier filter.

**Note:** Must be mixed into a working solution before use. Mixing instructions included.

No. LV508	1,2-Indanedione, 1g
No. LV5081	1,2-Indanedione, 10g

Silver Nitrate

Silver nitrate is especially useful for developing prints on raw wood or when used sequentially on paper documents as the final process after iodine and ninhydrin. It reacts with chloride and produces a silver chloride print.



Search Silver Nitrate Spray

This is a general purpose nitrate solution which is easy to use in the field or the laboratory. Once it's sprayed evenly on the surface, it should dry completely in about two minutes. After drying, use a high-intensity light to view results.

Often Bought Together:  
(SNA4) Silver Nitrate Accelerator Lamp

No. 205C	Silver Nitrate Spray, 8 oz.
----------	-----------------------------

Silver Latent Print Spray

This solution is especially useful when processing documents or objects printed with water soluble ink. Most inks will not dilute when treated with this solvent.

Often Bought Together:  
(SNA4) Silver Nitrate Accelerator Lamp

No. SLPS300	Silver Latent Print Spray, 8 oz.
-------------	----------------------------------

Silver Nitrate Crystal Ampoules

These Silver Nitrate Crystals are sealed in glass ampoules, then packaged in amber containers for protection from light.

Often Bought Together:  
(SNA4) Silver Nitrate Accelerator Lamp

No. SN208	Silver Nitrate Crystal Ampoules, 6 ea.
-----------	--

Silver Nitrate Accelerator Lamp

This 4-watt shortwave UV (254nm) lamp rapidly develops latent prints treated with Silver Nitrate and is ideal for both lab and field use. Operates on four AA alkaline batteries (not included).

**Note:** Use UV protective eyewear when using shortwave UV lamps.

No. SNA4	Silver Nitrate Accelerator Lamp
----------	---------------------------------

Physical Developer

Physical Developer Set

Normally, Physical Developer is used on latent prints after they've been treated with ninhydrin. It's actually more sensitive than many Silver Nitrate products. Available in 1 liter or 3.8 liter sizes.

No. LPD100	Physical Developer Set, 1 liter
No. LPD101	Physical Developer Set, 3.8 liter

Maleic Acid

An acid to use prior to Physical Developer because it neutralizes alkaline binders and fillers. Alkaline will react strongly with the Physical Developer.

**Note:** Powder version must be mixed into a working solution before use. Mixing instructions included.

Often Bought Together:  
(LPD100) Physical Developer Set

No. LPD110	Maleic Acid Powder, 50g
No. LPD110L	Maleic Acid Solution, 1 liter

Often Bought Together:  
Indicates items often purchased in conjunction with other items.

Dye Stains

Crystal Violet

Crystal Violet is a dye that transfers visible color to the fatty substances in fingerprints. It's very useful when you develop prints on grease and oil contaminated surfaces, and sticky adhesives, including tapes.

No. LV502	Crystal Violet, 25g
No. LV5021	Crystal Violet, 100g

Sudan Black

Sudan Black is an easy-to-use dye that is inexpensive, nontoxic, and has an indefinite shelf life. It's useful for grease or sticky substances, glass, metal or plastic materials and waxy surfaces.

No. LV504	Sudan Black, 30g
-----------	------------------

Oil Red O Developer

This developer is an alternative to Physical Developer to develop prints on porous surfaces, such as wet paper. It develops in red, giving high contrast.

No. LV510	Oil Red O Developer, 25g
-----------	--------------------------

Fuming Chambers

It's always better to under-develop prints in a chamber. Overdeveloped prints lose details.

Cyanoacrylate Fuming Chambers

Shake-n-Fume Disposable Fuming System

This system features a 2-piece frame assembly and crystal-clear fuming bags (15 ea. included) to let you constantly monitor the fuming process.

Often Bought Together:  
(CNA2000) Finder Packets,  
(CNA102) Cyanoacrylate Fuming Compound, (CNA3006) Cyano-Shot

<b>FR175FG Contents:</b>	
1-	Heavy duty base 11 ½" x 11 ½" (29.52cm x 29.52cm)
1-	Sturdy, lightweight Fiberglass frame
15-	FR175B1 Preprinted disposable fuming bags
1-	Zip-top Nylon carrying case
4-	Evidence Clips

No. FR175FG	Shake-n-Fume Disposable Fuming System
No. FR175B	Replacement Fuming Bags, 25 ea.

Portable Fuming Chamber Kit

This kit is designed to develop cyanoacrylate prints in the field. It's constructed of shatter-resistant clear acrylic, is easily assembled in five minutes, and is large enough for several items to be processed. With its transparent walls, you can monitor print development. Available with development kit or chamber only. Includes carrying case.



CNA900 Contents:

1- CNA990 Fuming Chamber w/Shelf and Hangers	1- 122L1 Kit Size Fiberglass Latent Print Brush
6- FR1006 Evidence Clips	1- M114L Regular Black Magnetic Latent Powder, 1 oz.
1- CNA2000 Finder™ Cyanoacrylate Packets, 5 ea.	1- 125L Standard Magnetic Applicator
2- CNA110A CYANO-BLOC™ pre-treatment/post-treatment pads	1- CNA9001 Carrying Case, Black Nylon
1- 101L Silk Black Latent Powder, 2 oz.	

CNA990 Contents:

1- Fuming Chamber w/Shelf and Hangers	6- FR1006 Evidence Clips
2- CNA110A CYANO-BLOC™ pre-treatment/post-treatment pads	1- CNA9001 Carrying Case, Black Nylon

No. CNA900	Portable Fuming Chamber Kit
No. CNA990	Portable Fuming Chamber (only)

Cyanoacrylate Laboratory Fuming Chamber Kit

This kit features 1.2 cubic-foot volume for handling multiple articles and the glass enclosure lets you monitor the development process. Comes with everything you need to fume with cyanoacrylate, and is compatible with our PUM100B Humidifier and our CW100 Cyanowand.



FR100 Specifications:

- Net Weight: 13 lbs. (5.88kg)
- Dimensions: 20 ¼" x 14" x 10 ½" (51.4cm x 35.6cm x 26.7cm)
- Chamber volume: 10 gallons (37.8 liters)

FR100 Contents:

1- CNA103 Cyanoacrylate Fuming Compound, 16 oz. (473ml)	1- CNA110A CYANO-BLOC Pre/Post-treatment Pads
1- CNA104 Omega-Print™ Dispersal Pads, 100 ea	2- CNA20001 Cyanoacrylate Packets
1- CNA106 Omega-Print™ Disposable Fuming Trays, 25 ea.	1- FR1001 Chamber with Lid
	1- FR1002 Fuming Platform, Wire Mesh
	6- FR1006 Evidence Clips

No. FR100	Cyanoacrylate Laboratory Fuming Chamber Kit
-----------	---



**Pricing Information:**  
For current pricing visit  
www.sirchie.com, or  
call 800.356.7311

Field & Lab  
Cyanoacrylate  
Fuming Chamber Kit

This new cyanoacrylate fuming chamber is both larger (at 17 gal) and lighter than our FR100 (fish tank version) making it more portable and ideal for field use. The durable, clear polycarbonate construction has integrated hand holds for easy carrying, and a lid that snaps into place, creating a tight seal. The two ports on the lid are included for using our CW100 Cyanowand, PUM100B Portable Humidifier and FR300N Defumigator.

FR100P Specifications:

- Construction: 0.094" thick, durable, clear polycarbonate
- Net Weight: 15 lbs. (6.8 kg); Dimensions: 26" x 18" x 12" (66cm x 45.7cm x 30.5cm)
- Chamber volume: 17 gallons (64.35 liters)

FR100P Contents:

- |   |   |
|---|---|
| 1- CNA103 Cyanoacrylate Fuming Compound, 16 oz. (473ml) | 1- CNA110A Cyano-Bloc Pre/Post-treatment Pads |
| 1- CNA104 Omega-Print™ Dispersal Pads, 100 ea           | 2- CNA20001 Cyanoacrylate Packets             |
| 1- CNA106 Omega-Print™ Disposable Fuming Trays, 25 ea.  | 1- Polycarbonate Chamber with Lid             |
|   | 1- FR1002 Fuming Platform, Wire Mesh          |
|   | 6- FR1006 Evidence Clips                      |

No. FR100P	Field & Lab Cyanoacrylate Fuming Chamber Kit
------------	--

Dual Temperature  
Cyanoacrylate Fuming  
Chamber

The FR200DT chamber has a large 4.0 cubic-foot volume for processing a large number of items simultaneously. The two heating elements can be switched between Standard (230° F) for fuming with regular cyanoacrylate liquid or hi-temp (500° F) to use with our CyanoPowder Crystals. Two ports let you use accessories, such as the FR300N Defumigator, or our PUM100B Portable Humidifier.

FR200DT Contents:

- |   |  |
|---|--|
| 1- CYP15 CyanoPowder, 1.5 gram Singles, 6-Pack      | 1- CNA110 Cyano-Bloc Pre/Post-treatment Pads |
| 1- CNA103 Omega-Print fingerprint Developer, 16 oz. | 1- FR201 Fuming Control Cards, Pad of 50     |
| 1- CNA106 Omega-Print Disposable Fuming Trays, 25   | 1- FR1002 Fuming Platform, Wire Mesh         |
| 1- CNA104 Omega-Print Dispersal Pads, 100 eah       | 4- Evidence Support Rods                     |
| 2- CNA20001 Cyanoacrylate Packets                   | 16- FR1006 Evidence Clips                    |

No. FR200DT	Dual Temp Cyanoacrylate Fuming Chamber, 110V AC
-------------	---

No. FR200DT220	Dual Temp Cyanoacrylate Fuming Chamber, 220V AC
----------------	---

Laboratory Cyanoacrylate  
Fuming Chamber

This unit's large chamber volume is ideal for processing large quantities of evidence. The chamber has three heating elements that can produce temperatures of 230 degrees farhenheit and three levels of support rods for individual items. A built-in control print hanger takes the guesswork out of development time. Two ports let you use accessories, such as the FR300N Defumigator, or our PUM100B Portable Humidifier.

FR600 Contents:

- |   |   |
|---|---|
| 1- CNA106 Omega-Print Disposable Fuming Trays, 25   | 1- CNA110 Cyano-Bloc Pre/Post-treatment Pads, 5 |
| 1- CNA103 Omega-Print Fingerprint Developer, 16 oz. | 1- FR201 Fuming Control cards, Pad of 50        |
| 1- CNA104 Omega-Print Dispersal Pads, 100           | 1- FR1002 Fuming Platform, Wire Mesh            |
| 2- CNA20001 Cyanoacrylate packets                   | 6- Evidence Support Rods                        |
|   | 24- FR1006 Evidence Clips                       |

No. FR600	Cyanoacrylate Fuming Chamber, 110V AC
-----------	---------------------------------------

No. FR600220	Cyanoacrylate Fuming Chamber, 220V AC
--------------	---------------------------------------

Fuming Chamber Accessories

The DeFumigator  
Cyanoacrylate Fume  
Extractor

The DeFumigator is a self-contained cyanoacrylate filtration system that provides dual filtration of noxious odors and fumes through the included Carbon-Activated & HEPA filters. The unit **connects directly to our FR100, FR100P, FR200DT, FR600, or CNA900.** The filter system has a built-in timer and no tools are required for hook-up.

FR300N Specifications:

- |   |  |
|---|--|
| • Exhaust Fan: High-capacity electric fan                               | • Dial control: 1-5 minutes  |
| • FR301 HEPA Filter: Removes 99.97% of particulates                     | • Weight: 12 lbs. 8 oz. (5.67kg)                                     |
| • FR302 Bonded Carbon-Activated Filter: Removes 99.97% of organic odors | • Dimensions: 12.5"W x 10.375"D x 7.5"H (77.5cm x 26.35cm x 19.05cm) |

No. FR300N	DeFumigator, 110V AC
------------	----------------------

No. FR300N220	DeFumigator, 220V AC
---------------	----------------------

No. FR301	Replacement HEPA Filter, 1 ea.
-----------	--------------------------------

No. FR302	Replacement Bonded Carbon-Activated Filter, 1 ea.
-----------	---

**Often Bought Together:**  
Indicates items often purchased in conjunction with other items.

Portable Humidifier

Adding humidity is essential for enhancing latent prints and accelerating development times when processing with ninhydrin and cyanoacrylate. Sirchie's Portable Humidifier can precisely control humidity and is equipped with a germicidal bulb for preventing the growth of bacteria. **Connects directly to the FR100, FR100P, FR200DT, FR600, or CNA900.**

PUM100B Contents:

- 1- PUM100B Portable Humidifier
- 1- PUM105 Deionized Water, 500ml

**Often Bought Together:**  
(FR100) Cyanoacrylate Laboratory Fuming Chamber Kit

No. PUM100B	Portable Humidifier, 110V AC
-------------	------------------------------

No. PUM100B220	Portable Humidifier, 220V AC
----------------	------------------------------

Cyanoacrylate Vacuum Chambers

Fuming with cyanoacrylate in a vacuum has been found to result in a more even distribution of the cyanoacrylate ester while all but eliminating the possibility of over-fuming.

Cyanovac I Laboratory Fuming Chamber Outfit

This state-of-the-art chamber is designed to fume objects of various shapes and sizes, such as wrinkled plastic bags. Previously, you would have to unfold items to a flat state to begin fuming, which often resulted in under or over-fuming. This chamber takes that worry away as it distributes fingerprint development fumes evenly.

VAC150 Specifications:

- Dimensions: 17" x 11.5" dia. (43.2cm x 29.2cm dia.)
- Net Weight: 44 lbs. (19.95kg)
- Chamber volume: 1766 cubic inches (765 gallons or 29 Liters)

VAC150 Contents:

- 1- VAC100 Vacuum Chamber, 17"
- 1- VAC50 Vacuum Pump, Diaphragm Type
- 1- CNA2000 Cyanoacrylate Pack, 5/pk

No. VAC150	Cyanovac I Fuming Chamber, 110V AC
------------	------------------------------------

No. VAC150220	Cyanovac I Fuming Chamber, 220V AC
---------------	------------------------------------

Cyanovac III  
Combination  
Vacuum  
Chamber Outfit

This vacuum fuming system is the Cyanovac I and Cyanovac II combined, giving you unlimited possibilities for fuming objects of various shapes and sizes.

VAC350 Specifications:

- Dimensions of chambers: 17" x 11.5" dia. (43.2cm x 29.2cm dia.) & 48.75" x 7.5" dia. (123.8cm x 22.9cm dia.)
- Net Weight: 90 lbs. (40.8kg)
- Total volume of both chambers: 3887 cubic inches (16.83 gallons or 64 Liters)

VAC350 includes:

- |  |                                      |
|--|--------------------------------------|
| 1- VAC100 Vacuum Chamber for Cyanoacrylate Development, 17"    | 1- VAC202 Miscellaneous Items Tray   |
| 1- VAC200 Vacuum Chamber for Cyanoacrylate Development, 48.75" | 1- VAC203 Glue Pack Holder           |
| 1- VAC52 Dual Tank Connector                                   | 1- VAC50 Vacuum Pump, Diaphragm Type |
| 1- VAC201 Gun Rack Tray  | 1- CNA2000 Cyanoacrylate Pack, 5/pk  |

No. VAC350	Cyanovac III Combo Chamber, 110V AC
------------	-------------------------------------

Iodine, Ninhydrin & DFO Chambers

Laboratory Fuming Cabinet and  
Heat Chamber

Process fingerprints with ninhydrin and iodine with this sealed chamber. Constructed of fiberglass, this unit won't corrode with iodine fumes. You can control chamber temperature with a programmable digital temperature controller. It features the optimal temperatures for processing with ninhydrin as well as iodine.

214CA Specifications:

- Weight: 15.37 lbs. (7kg)
- Microprocessor-based digital temperature controller
- Silicone-encapsulated heater
- Gasket-sealed fuming compartment improves vapor control
- Sturdy steel, aluminum, and fiberglass construction
- Stainless steel intake and exhaust ports

214CA Contents:

- 1- 202C Ninhydrin Aerosol, 6 oz.
- 1- A211C Iodine Crystal Ampoules, 6
- 1- DCA16 Iodine Print Enhancer, 6
- 1- KCP162 Watch Glass
- 1- NFS200 Ninhydrin Fixative Pump Spray, 8 oz.
- 3- Stainless Steel Document Rods
- 6- Stainless Steel Document Clips

No. 214CA	Lab Fuming Cabinet & Heat Chamber, 110V AC
-----------	--

No. 214CA220	Lab Fuming Cabinet & Heat Chamber, 220V AC
--------------	--



**Pricing Information:**  
For current pricing visit  
www.sirchie.com, or  
call 800.356.7311

**Often Bought Together:**  
Indicates items often  
purchased in conjunction  
with other items.

DFO/Ninhydrin Development Control Chambers

DFO-treated prints develop slowly unaided, but development can be accelerated with heat. These chambers have temperatures that are pre-set for optimum DFO development and can be easily adjusted to meet your specific needs. The chamber also features an automatic cutoff, reducing the possibility of damage to sensitive papers. Repeat DFO processing several times to enhance development.

Available in small or large sizes in 110V or 220V.



Features:

- Full length hinge, positive latch door
- Silicone door seals
- Baked enamel exterior
- Efficient high-temperature Fiberglass insulation surrounds the oven chamber
- Solid-state temperature controller with digital temperature readout
- Front mounted on/off switch
- Single set point controller factory set for optimum DFO development
- Easily adjusted
- Easy-to-clean welded brushed nickeloid oven chamber
- Optically clear, double-pane, tempered glass door allows monitoring without disturbing the controlled atmosphere

Specifications:

DFC100A:

- Dimensions: 26" x 15.875" x 13" (66cm x 40.3cm x 33cm)
- Net Weight: 42.5 lbs. (19.3kg)

DFC200A:

- Dimensions: 26" x 26" x 15.875" (66cm x 66cm x 40.3cm)
- Net Weight: 73 lbs. (33.1kg)

No. DFC100A	DFO/Ninhydrin Control Chamber, 110V AC
No. DFC100A220	DFO/Ninhydrin Control Chamber, 220V AC
No. DFC200A	DFO/Ninhydrin Control Chamber, large, 110V AC
No. DFC200A220	DFO/Ninhydrin Control Chamber, large, 220V AC

Latent Print Field Kits

Our Latent Print Field Kits offer a combination of many of the most widely used latent print development products available. The products in these kits are of the highest quality and are designed to best accommodate the needs and requirements of crime scene investigators.

These kits vary according to the numerous functions performed by crime scene investigators and range from the very modest to very complex.

Kits can be customized to meet the specific needs of your department or agency —call us at 800.356.7311 for details.

**Minimum quantities required.**

Patrol Latent Print Kit

An ideal kit for a patrol officer, whose duties might also include some crime scene investigation. Includes basic items to locate and lift latent prints.



MFC100 Contents:

- 1 - 101L Black Latent Print Powder, 2 oz.
- 1 - 145L2 2" Frosted Lifting Tape
- 1 - 122L1 Kit Size Fiberglass brush
- 1 - LB003 3" x 5" Backing Sheet Pad, 50 Sheets
- 1 - MFC100C Black, Molded Copolymer Carrying Case

No. MFC100	Patrol Latent Print Kit
------------	-------------------------

Search Scott Latent Print Kit

This professional latent print kit offers an increased selection of fingerprint powders along with an augmented selection of fingerprint lifters. It is a kit containing a desirable complement of components for those departments handling a wide range of crime scene situations.



176L Contents:

- 1- 101L Silk Black Latent Powder, 2 oz. (59ml)
- 1- 103L Indestructible White Latent Powder, 2 oz. (59ml)
- 1- SG202L Silver/Gray Latent Powder, 2 oz. (59ml)
- 3- 118L Regular Powder Brushes
- 1- 130LT Trans Hinge Lifters, 1.5" x 2" (3.8cm x 5.1cm), 24 ea.
- 12- 130LW1 White Hinge Lifters, 1.5" x 2" (3.8cm x 5.1cm)
- 12- 130LB1 Black Hinge Lifters, 1.5" x 2" (3.8cm x 5.1cm)
- 2- 127LW1 White Rubber/Gel Lifters, 2" x 4" (5.1cm x 10.2cm)
- 2- 127LB1 Black Rubber/Gel Lifters, 2" x 4" (5.1cm x 10.2cm)
- 1- KCP110 Scissors, 5" (12.7cm)
- 1- 379M Attached Case Magnifier, 1.75" (4.4cm)
- 6- ZTE011 Zip-Top Evidence Bags, 4" x 6" (10.2cm x 15.2cm)
- 6- EIL011 Crime Evidence Labels
- 1- 176LC Black Molded Copolymer Case; Dimensions: 12.25" x 9" x 4" (31.1cm x 22.9cm x 10.2cm); Weight: 2.3 lbs. (1kg)

No. 176L	Scott Latent Print Kit
----------	------------------------

Search Latent Print Technician Kit

This is the ideal choice for investigators who deal with high-incident crime areas, and the kit is made for durable service.



175L Contents:

- 1- 101L Black Latent Powder, 2 oz.
- 1- 103L White Latent Powder, 2 oz.
- 1- 144L 1.5" x 2" Clear Lift Tape
- 6- 130LT1 1.5" x 2" Clear Hinge Lifters
- 6- 130LW1 1.5" x 2" White Hinge Lifters
- 6- 130LB1 1.5" x 2" Black Hinge Lifters
- 2- 118L Regular Powder Brushes
- 1- KCP110 5" Scissors
- 1- 379M Attached Case Magnifier
- 1- 175LC Black, Molded Copolymer Carrying Case

No. 175L	Latent Print Technician Kit
----------	-----------------------------

Detective Pocket Latent Kit

This compact kit fits comfortably in your coat pocket and is used for on-the-spot latent print searches and lifting.



157LA Contents:

- 1- 101L4 Black Latent Powder, 0.5 oz.
- 1- 103L4 White Latent Powder, 0.5 oz.
- 2- 131LT1 2" x 4" Transparent Hinge Lifters
- 2- 131LW1 2" x 4" White Hinge Lifters
- 2- 131LB1 2" x 4" Black Hinge Lifters
- 2- 118L Regular Powder Brushes
- 1- KCP112 Straight Handle Magnifier, 3X
- 1- KCP119 Molded, Acrylic Carrying Case

No. 157LA	Detective Pocket Latent Kit
-----------	-----------------------------



**Pricing Information:**  
For current pricing visit  
www.sirchie.com, or  
call 800.356.7311



**Often Bought Together:**  
Indicates items often  
purchased in conjunction  
with other items.

Search Pocket Latent Value Kit

The Search Pocket Latent Value Kit provides quality products you need for latent print processing at a low price.

156LV includes:

- 2- 117L Goat Hair Powder Brushes
- 1- KCP112 3X Straight Handle Magnifier
- 1- 103L4 White Latent Powder, 4 dram
- 1- 101L4 Black Latent Powder, 4 dram
- 2- 131LT1 2" x 4" Clear Hinge Lifters
- 2- 131LB1 2" x 4" Black Hinge Lifters
- 2- 131LW1 2" x 4" White Hinge Lifters
- 1- KCP119 Molded, Acrylic Carrying Case

No. 156LV

Search Pocket Latent Value Kit



Search Magnetic Latent Value Kit

This kit includes the basic means to process and lift latent prints with magnetic powder.

158LV Contents:

- 1 - 125L Magnetic Applicator
- 1 - KCP112 Straight Handle Magnifier, 3X
- 1 - M114L1 Black Magnetic Powder, 45g
- 1 - M116L1 White Magnetic Powder, 45g
- 6 - 131LT1 2" x 4" Transparent Hinge Lifter
- 1 - KCP119 Molded Acrylic Carrying Case

No. 158LV

Search Magnetic Latent Value Kit



Search Latent Print Value Kit

This kit provides the basic tools to process and lift latent fingerprints with regular black powder.

161LV Contents:

- 1- 144L 1.5" Clear Lift Tape
- 20- LPW1001 3" x 5" Backing/Sketch Cards, White
- 1- 118L Regular Powder Brush
- 1- 101L1 Silk Black Powder, 1 oz.
- 1- Molded, Polypropylene Carrying Case

No. 161LV

Search Latent Print Value Kit



Rubber-Jell Lifting Tape Kit

Rubber-Jell is especially useful to conform to most surfaces, such as smooth, textured, painted, rough, round, and many others. With this kit, you can locate prints with magnetic or regular powder and then lift them with our Rubber-Jell lifting tape.

RJL100 Contents:

- 1- 144LRJ 1.5" x 60" Rubber-Jell Lifting Tape
- 1- 144L 1.5" x 360" Clear Lift Tape
- 1- 123LW White Marabou Feather Duster
- 1- 125MD Megawand Magnetic Applicator
- 1- FPT262A 3" Fingerprint Ink Roller
- 1- 317P 3" Magnifier
- 1- SBM9 Silver/Black Magnetic Powder, 1 oz
- 1- SB201L Silver/Black Latent Powder, 2 oz
- 2- CNA300A Cyano-Shot (HG1 & CNA1)
- 40- LPB1001 3" x 5" Backing/Sketch Cards, Black
- 40- LPW1001 3" x 5" Backing/Sketch Cards, White
- 1- RJL1001 Black, Molded, Copolymer Carrying case

No. RJL100

Rubber-Jell Lifting Tape Kit



Sweeper Magnetic Latent Print Kit

This is an excellent kit for sweeping large areas with magnetic fingerprint powder. It features a wide-sweep magnetic sweeper wand and three magnetic powders to cover any situation. Powders are supplied in wide-mouth containers for optimum sweeper access.



160L Contents:

- 1- MSW114L Black Magnetic Latent Print Powder Pack
- 1- MSW200 Magnetic Sweeper Wand
- 1- MSWBM10 Silver/Gray Magnetic Latent Print Powder Pack
- 1- MSWSBM9 Silver/Black Magnetic Latent Print Powder Pack
- 1- 160LC Molded, Plastic Carrying Case with Component Inserts

No. 160L

Sweeper Magnetic Latent Print Kit

Adhesive-Side Powder Kit

If you need to develop latent prints on adhesive surfaces, such as tapes or labels, this is your kit. Included are all the tools you need to find and lift prints off adhesive surfaces. Complete instructions included.

ASP150 Contents:

- 1- ASP50D Dark Adhesive-Side Powder, 50g
- 1- ASP50L Light Adhesive Side Powder, 50g
- 1- ASP10 EZFLO Super Concentrate, 6 oz.
- 1- TRA20 Adhesive Tape Release Agent, 1 oz.
- 1- KCP300 LPDE Bottle with Cap, 6 oz.
- 2- 118L Regular Powder Brushes
- 2- KCP139 Plastic Tweezers
- 1- KCP301 Rinse Basin
- 2- KCP302 Mixing Bowl with Lid
- 1- KCP303 Measuring Spoon, 1 tsp
- 1- Instructions for TRA20
- 1- ASP501 Texturized, Molded, Plastic Carrying Case

No. ASP150

Adhesive-Side Powder Kit



Small Particle Reagent Kit

The Small Particle Reagent is ideal for many surfaces, including wet or dry non-porous surfaces, glass articles, polyethylene bags, plastic-coated paper, automobiles exteriors, or all types of dry or wet cans. This kit holds all the tools you need to find and lift prints using this method.

SPR300 Contents:

- 2- SPR1001 Dark SPR, 500ml
- 2- SPR2001 White SPR, 500ml
- 4- KCP220 Dispenser Spray Heads
- 2- Plastic Rinse Water Bottles, 500ml
- 1- MB248PS Magic Orange Waterless Hand Cleaner. 16oz
- 1- 144L4 4" Clear Lift Tape
- 6- KCP238 4" x 10" Plastic Sheets, 10mil
- 12- FPT1C1 Super Cleaner Towelettes
- 1- 144L2 2" Clear Lift Tape
- 1- LB0011 5.5" x 8.5" Lifted Print Backing Pad, 50 Sheets
- 1- KCP110 5" Scissors
- 1- KCP223 Plastic Towel Storage Box
- 1- SPR3001 Texturized, Molded-Plastic Carrying Case

No. SPR300

Small Particle Reagent Kit



Iodine Fuming Kit

Our Fumette Disposable Iodine Fuming Guns (No. DF2016) make it possible for you to use iodine to process prints, which is ideal for smooth, non-porous, paper, cardboard, plastic packaging, rubber and leather surfaces. Kit includes all the tools necessary to fume latent prints with iodine and lift results.



LPF100 Contents:

- 8- DF201 Fumette Disposable Iodine Fuming Guns
- 8- DCA1 Iodine Print Enhancer Ampoules
- 2- SP501 2" x 2" Silver Transfer Plates
- 1- SP505 Silver Cleaner/Polish, 2 oz.
- 1- KCP226 Suction Cup Plate Holder
- 1- LPF1001 Texturized, Molded-Plastic Carrying Case

No. LPF100

Iodine Fuming Kit

Hunter Latent Print Kit

This compact latent print kit is for use at any crime scene. Integrity and cleanliness of the kit and components are assured through utilization of our Retractable Fiberglass Brushes. Components are housed in a rugged polyethylene carrying case.

KHC500 Contents:

- 1- 101L Black Latent Powder, 2 oz.
- 1- 103L White Latent Powder, 2 oz.
- 2- RFF200 Retractable Fiberglass Brushes
- 1- 144L 1.5" Clear Lift Tape
- 1- LB0021 2.25" x 4" Backing Sheet Pad, 50 Sheets
- 1- KCP110 5" Scissors
- 1- 379M Attached Case Magnifier
- 1- KHC5001 Black, Molded Copolymer Carrying Case

No. KHC500

Hunter Latent Print Kit





**Pricing Information:**  
For current pricing visit  
[www.sirchie.com](http://www.sirchie.com), or  
call 800.356.7311

**Often Bought Together:**  
Indicates items often  
purchased in conjunction  
with other items.

Professional Latent Print Kit

This kit offers a variety of powder colors and a brush for each—ensuring no powder intermix. Use the included lifting tape and backing sheets or Hinge Lifters to preserve the developed prints.



PLP100 Contents:

- 1- 145L2 2" Frosted Lift Tape

12- 130LT1 1.5" x 2" Clear Hinge Lifters

6- 131LT1 2" x 4" Clear Hinge Lifters

6- 131W1 2" x 4" White Hinge Lifters

6- 131LB1 2" x 4" Black Hinge Lifters

6- 127LW1 2" x 4" White Rubber Lifters

6- 127LB1 2" x 4" Black Rubber Lifters

6- 131LT41 4" x 4" Clear Hinge Lifters

3- 122L1 Kit Size Fiberglass Brushes

3- 118L Search Regular Powder Brush

1- 101L Black Latent Powder, 2 oz.

1- 103L White Latent Powder, 2 oz.
- 1- SB201L Silver/Black Latent Powder, 2 oz.

1- SR301L Silver/Red Latent Powder

1- LB0031 3" x 5" Backing Sheet Pad, 50 Sheets

1- 379M Attached Case Magnifier

1- KCP110 5" Scissors

10- ZTE011 4" x 6" Evidence Bags

10- EIL011 Crime Evidence Labels

1- KCP152 Accessory Case

1- Aluminum Attaché Case, 18" x 13" x 5"

No. PLP100

Professional Latent Print Kit

Finder III Latent Print Kit

This kit includes Sirchie's unique self contained powder and brush delivery system, the FACII®, for regular print development and Sirchie's magnetic powder and wand application system for magnetic print development.



FLP100 Contents:

- 1- FAC101 Black FACII Powder/Brush Combination

1- FAC103 White FACII Powder/Brush Combination

1- M114L Black Magnetic Powder, 1 oz.

1- M116L White Magnetic Powder, 1 oz.

1- 125L Standard Magnetic Applicator

1- 144L 1.5" Clear Lift Tape

1- LB0021 Backing Sheet Pad, 2.25" x 4", 50 sheets

6- 130LT1 1.5" x 2" Clear Hinge Lifters
- 6- 130LW1 1.5" x 2" White Hinge Lifters

6- 130LB1 1.5" x 2" Black Hinge Lifters

4- 131LT1 2" x 4" Clear Hinge Lifters

4- 131LW1 2" x 4" White Hinge Lifters

4- 131LB1 2" x 4" Black Hinge Lifters

1- KCP223 Hinged Polystyrene Box

1- 379M Attached Case Magnifier

1- KCP1141 Retractable Measuring Tape

1- KCP152 Molded, Polypropylene Case

1- Aluminum Attaché Case, 18" x 13" x 5"

No. FLP100

Finder III Latent Print Kit

Latent Print Search Kit

This kit contains everything the CSI needs to develop and lift latent fingerprints at the crime scene. Powders and applicators for both regular and magentic processing are included.



LPS100 Contents:

- 1- 101L Black Latent Powder, 2 oz.

1- 103L White Latent Powder, 2 oz.

1- M114L Black Magnetic Powder, 1 oz.

1- M116L White Magnetic Powder, 1 oz.

2- RFF200 Retractable Fiberglass Brush

1- 125L Standard Magnetic Applicator

1- LB0021 Backing Sheet Pad 2.25" x 4", 50 Sheets

1- 144L 1.5" Clear Lift Tape
- 6- 130LT1 1.5" x 2" Clear Hinge Lifters

6- 130LW1 1.5" x 2" White Hinge Lifters

6- 130LB1 1.5" x 2" Black Hinge Lifters

1- KCP110 5" Scissors

1- 379M Attached Case Magnifier

1- KCP1141 Retractable Tape Measure

1- KCP152 Molded Polypropylene Case

1- Aluminum Attaché Case, 18" x 13" x 5"

No. LPS100

Latent Print Search Kit

Search Master Latent Print Kit

This kit includes items to develop latent prints as well as taking prints for elimination purposes.



SEC500 Contents:

- 1- 101L1 Black Latent Powder, 1 oz.

1- SG202L1 Silver/Gray Latent Powder, 1 oz.

2- 118L Regular Powder Brushes

4- 131LT1 2" x 4" Clear Hinge Lifters

4- 131LB1 2" x 4" Black Hinge Lifters

4- 131LW1 2" x 4" White Hinge Lifters

4- LPB1001 3" x 5" Black Backing Cards
- 4- LPW1001 3" x 5" White Backing Cards

1- FPT270A Elimination Fingerprint Form Pad

1- PFP601 PrintMatic Thermoplastic Pad

1- 379M Attached Case Magnifier

4- FPT1C1 Super Cleaner Towelettes

1- SEC500C Texturized, Molded-Plastic Carrying Case, 12" x 7.25" x 4.5"

No. SEC500

Master Latent Print Kit

Search Multi-Process Latent Print Kit

Develop prints with regular and magnetic powders. A pocket mini fingerprint pad is included to record elimination fingerprints.



SEC600 Contents:

- 1- SB201L1 Silver/Black Latent Powder, 1 oz.

1- 118L Regular Powder Brush

1- SBM9 Silver/Black Magnetic Powder, 1 oz.

1- 125L Standard Magnetic Applicator

4- 131LT1 2" x 4" Clear Hinge Lifters

4- 131LB1 2" x 4" Black Hinge Lifters

4- 131LW1 2" x 4" White Hinge Lifters
- 4- LPB1001 Black Backing Cards, 3" x 5"

4- LPW1001 White Backing Cards, 3" x 5"

1- FPT270A Elimination Fingerprint Form Pad

1- PFP601 PrintMatic Thermoplastic Pad

1- 379M Attached Case Magnifier

6- FPT1C Super Cleaner Towelettes

1- SEC600C Texturized, Molded-Plastic Carrying Case, 12" x 7.25" x 4.5"

No. SEC600

Multi-Process Latent Print Kit

CSI Latent Fingerprint Kit

This economical kit includes an assortment of latent print powders, brushes and lifters necessary for processing latent prints on both porous and non-porous surfaces. Everything you need for latent fingerprint processing at the crime scene is contained in the handy plastic carrying case.



CSI100 Contents:

- 1- 101L Hi-Fi Volcano Latent Print Powder, Silk Black, 2 oz.

1- 107L Hi-Fi Volcano Latent Print Powder, Copper, 2 oz.

2- 122L Fiberglass Latent Print Brush

3- 123LW Marabou Feather Brush, White

1- MAG100 MagNuclei™ Magnetic Latent Print Powder, 1 oz.

1- 125L Standard Magnetic Powder Applicator

1- 127LB Rubber Gel Lifters, 2" x 4" black, 12 pk.
- 1- 127LW Rubber Gel Lifters, 2" x 4" white, 12 pk.

1- 131LB Hinge Lifters, 2" x 4" black, 12 pk.

1- 131LT Hinge Lifters, 2" x 4" transparent, 12 pk.

1- 131LW Hinge Lifters, 2" x 4" white, 12 pk.

1- KCP1002F Black Plastic Case with foam insert; Dimensions: 12 1/16" x 8 5/16" x 4 3/4"

No. CSI100

CSI Latent Fingerprint Kit

Search II Latent Print Kit

The Search II is the most complete, compact latent print field kit. This kit is complete with a comparison and elimination book along with the compact thermoplastic fingerprint ink pad. This combination kit permits the investigator to locate, develop, lift and preserve latent evidence plus take elimination fingerprints at the scene. Sirchie's best fiberglass brush is provided for each color of powder.



177L Contents:

- 1- 101L 2 oz. Silk Black Latent Powder

1- 103L 2 oz. White Latent Powder

1- SG202L 2 oz. Silver/Gray Latent Powder

3- 122L1 Kit Size Fiberglass Brushes

1- 130LT 1.5" x 2" Transparent Hinge Lifters, 24

12- 130LB1 1.5" x 2" Black Hinge Lifters

12- 130LW1 1.5" x 2" White Hinger Lifters

6- 131LT1 2" x 4" Transparent Hinge Lifters

6- 131LB1 2" x 4" Black Hinge Lifters

6- 131LW1 2" x 4" White Hinge Lifters

2- 127LW1 2" x 4" White Rubber/Gel Lifters
- 2- 127LB1 2" x 4" Black Rubber/Gel Lifters

1- KCP110 5" Scissors

1- PFP700 Thermoplastic Fingerprint Ink Pad

1- FPT270A Elimination Fingerprint Form Pad

1- 379M Attached Case Magnifier

1- 603E Evidence Collection Tape

7- 621E1 Evidence Bags 4" x 10"

9- FPT1C Super Cleaner Towelettes

1- 177L1 Molded Black Copolymer Carrying Case

No. 177L

Search II Latent Print Kit



**Pricing Information:**  
For current pricing visit  
[www.sirchie.com](http://www.sirchie.com), or  
call 800.356.7311

**Often Bought Together:**  
Indicates items often  
purchased in conjunction  
with other items.

Search All-Purpose Field Kit

One of our most popular kits in our latent print kit line, this kit contains all tools for taking, developing, lifting, and preserving fingerprint evidence at the crime scene. When closed, the Kit case serves as a table top for fingerprint taking.

Search Burglary Squad Kit

This multi-purpose kit has all the necessary items for search and development of latent prints with regular and magnetic powders. A fingerprint cardholder is mounted externally to the kit's carrying case to assist with taking elimination fingerprints at the scene.

Search Signat Fingerprint Investigation Kit

The Search Signat Fingerprint Investigation Kit is an outstanding professional latent print value. This kit offers an excellent selection of regular and magnetic latent print powders. It also includes a PrintMatic™ pad and elimination booklet for recording elimination prints at the crime scene. Supplies are stored in the kit's lightweight, durable, attache-type carrying case. The carrying case features expandable file folders for storing reports and other documents.

Search Crime Scene Latent Print Kit

The Search Crime Scene Latent Print Kit is an exceptional kit designed to develop latent prints with powders, ninhydrin and iodine. Supplies are housed in the kit's aluminum attaché carrying case that features an expandable file folder for storing reports and other documents.



LP301A Contents:

- |  |   |
|--|---|
| 1- 101L1 Silk Black Latent Powder, 1 oz.     | 1- FPT264 Mounted Fingerprint Cardholder                  |
| 1- 103L1 White Latent Powder, 1 oz.          | 1- FPT262 2" Easy-Grip Ink Roller                         |
| 1- SB201L1 Silver/Black Latent Powder, 1 oz. | 1- 230T 2 oz Fingerprint Ink                              |
| 1- SG202L1 Silver/Gray Latent Powder, 1 oz.  | 10- FPT1C1 Super Cleaner Towelettes                       |
| 1- SR301L1 Silver/Red Latent Powder, 1 oz.   | 10- FC3301 8" x 8" Fingerprint Record Cards               |
| 5- 118L Regular Powder Brushes               | 1- 317P 3" Magnifier                                      |
| 4- DF201 Iodine Fuming Guns                  | 1- KCP115 LED Penlight w/batteries                        |
| 4- DCA1 Iodine Print Enhancers               | 1- KCP1141 Retractable Measuring Tape                     |
| 1- 144L 1.5" x 360" Clear Lift Tape          | 1- 603E 1" x 500" Evidence ID Tape                        |
| 6- 131LT1 2" x 4" Clear Hinge Lifters        | 3- EPS30W1 6" Photo Evidence Rulers                       |
| 6- 131LB1 2" x 4" Black Hinge Lifters        | 1- KCP110 5" Scissors                                     |
| 10- FC3371 Black Combination Backing Cards   | 1- KCP116 Pocket Notebook w/pen                           |
| 10- FC3401 White Combination Backing Cards   | 10- Evidence Bags, 4" x 10"                               |
| 1- FPT205 4" x 10" Glass Inking Slab         | 1- KCP152 Molded, Polypropylene Case, 8.5" x 4.5" x 1.75" |
|  | 1- Aluminum attaché case, 18" x 13" x 5"                  |

No. LP301A All-Purpose Field Kit

LP304 Contents:

- |   |   |
|---|---|
| 1- 101L Black Latent Powder, 2 oz.                  | 1- PFP700 PrintMatic Fingerprint Pad                      |
| 1- SG202L Silver/Gray Latent Powder, 2 oz.          | 1- FPT264 Fingerprint Cardholder, Mounted                 |
| 2- 118L Regular Powder Brushes                      | 10- FPT1C1 Super Cleaner Towelettes                       |
| 1- M114L Black Magnetic Powder, 1 oz.               | 1- FPT270A Elimination Fingerprint Form Pad               |
| 1- SBM10 Silver/Gray Magnetic Powder, 1 oz.         | 10- FC3301 Fingerprint Record Cards, 8" x 8"              |
| 1- 125L Standard Magnetic Applicator                | 1- 317P 3" Magnifier                                      |
| 6- 131LT1 Clear Hinge Lifters, 2" x 4"              | 1- KCP115 LED Penlight w/batteries                        |
| 6- 131LB1 Black Hinge Lifters, 2" x 4"              | 1- KCP1141 Retractable Measuring Tape                     |
| 6- 131LW1 White Hinge Lifters, 2" x 4"              | 1- 603E Evidence ID Tape, 1" x 500"                       |
| 4- 127LW1 White Gel Lifters, 2" x 4"                | 3- EPS30W1 Photo Evidence Rulers, 6"                      |
| 4- 127LB1 Black Gel Lifters, 2" x 4"                | 1- KCP110 Scissors, 5"                                    |
| 1- 144L Clear Lift Tape, 1.5" x 360"                | 1- KCP116 Pocket Notebook w/pen                           |
| 10- FC3371 Black Combination Backing Cards, 3" x 5" | 6- 621E1 Evidence Bags, 4" x 10"                          |
| 10- FC3401 White Combination Backing Cards, 3" x 5" | 1- KCP152 Molded, Polypropylene Case, 8.5" x 4.5" x 1.75" |
| 1- LB0031 Reversible Backing Sheet Pad              | 1- Aluminum Attaché Case, 18" x 13" x 5"                  |

No. LP304 Burglary Squad Kit

SLP900 Contents:

- |   |   |
|---|---|
| 1- 101L Black Latent Powder, 2 oz           | 1- 144L 1.5" x 360" Clear Lift Tape                       |
| 1- 103L White Latent Powder, 2 oz           | 1- LB0021 Reversible Backing Sheet Pad, 50 Sheets         |
| 1- SB201L Silver/Black Latent Powder, 2 oz. | 1- PFP700 PrintMatic Fingerprint Pad                      |
| 1- SG202L Silver/Gray Latent Powder, 2 oz.  | 1- FPT270A Elimination Fingerprint Form Pad               |
| 4- 118L Regular Powder Brushes              | 10- FPT1C1 Super Cleaner Towelettes                       |
| 2- 122L Fiberglass Latent Print Brushes     | 1- 317P 3" Magnifier                                      |
| 1- M114L Black Magnetic Powder, 1 oz.       | 1- KCP115 LED Penlight w/batteries                        |
| 1- SBM9 Silver/Black Magnetic Powder, 1 oz. | 1- 603E 1" x 500" Evidence ID Tape                        |
| 1- SBM10 Silver/Gray Magnetic Powder, 1 oz. | 1- KCP1141 Retractable Measuring Tape                     |
| 1- 125L Standard Magnetic Applicator        | 1- KCP110 5" Scissors                                     |
| 1- 130LT 1.5" x 2" Clear Hinge Lifters, 24  | 10- 621E1 4" x 10" Evidence Bags                          |
| 4- 131LT1 2" x 4" Clear Hinge Lifters       | 2- KCP152 Molded Polypropylene Cases, 8.5" x 4.5" x 1.75" |
| 4- 131LB1 2" x 4" Black Hinge Lifters       | 1- Aluminum Attaché Case, 18" x 13" x 5"                  |
| 4- 131LW1 2" x 4" White Hinge Lifters       |   |

No. SLP900 Signat Fingerprint Investigation Kit

CS800 Contents:

- |   |   |
|---|---|
| 1- 101L Black Latent Powder, 2 oz.              | 4- 131LW1 2" x 4" White Hinge Lifters                     |
| 1- 103L White Latent Powder, 2 oz.              | 1- 144L 1.5" x 360" Clear Lift Tape                       |
| 1- SBM201L Silver/Black Latent Powder, 2 oz.    | 1- LB0021 Reversible Backing Sheet Pad                    |
| 2- 118L Regular Powder Brushes                  | 1- PFP700 PrintMatic Flawess Pad                          |
| 2- 122L Fiberglass Latent Print Brushes         | 1- FPT270A Elimination Fingerprint Form Pad               |
| 1- M114L Black magnetic Powder, 1 oz.           | 10- FPTC1 Super Cleaner Towelettes                        |
| 1- SBM10 Silver/Gray Magnetic Powder, 1 oz.     | 1- 379M Attached Case Magnifier                           |
| 1- 125L Standard Magnetic Applicator            | 1- KCP115 LED Penlight w/batteries                        |
| 1- 202C Ninhydrin Aerosol, 6 oz.                | 1- 603E Evidence ID Tape, 1" x 500"                       |
| 1- AMP2066 Iodette Ampoules, 6 each             | 1- KCP1141 Retractable Measuring Tape                     |
| 3- DCA1 Iodine Enhancement Applicators          | 1- KCP110 5" Scissors                                     |
| 3- ZTE021 Iodette Fuming Bags, 9" x 12"         | 10- 621E1 Evidence Bags, 4" x 10"                         |
| 1- 130LT 1.5" x 2" Clear Hinge Lifters, 24 each | 2- KCP152 Molded Polypropylene Cases, 8.5" x 4.5" x 1.75" |
| 4- 131LT1 2" x 4" Clear Hinge Lifters           | 1- Aluminum Attaché Case, 18" x 13" x 5"                  |
| 4- 131LB1 2" x 4" Black Hinge Lifters           |   |

No. CS800 Crime Scene Latent Print Kit



**Pricing Information:**  
For current pricing visit  
www.sirchie.com, or  
call 800.356.7311

**Often Bought Together:**  
Indicates items often  
purchased in conjunction  
with other items.

Search Latent Print Finder Kit

A popular choice among departments with crime scene search teams, this complete kit has all the components to develop prints with regular and magnetic powders. A full assortment of fingerprint lifters and backing cards gives you options, depending on your surface.



LPS800 Contents:

- 1- 101L Black Latent Powder, 2 oz.

1- 103L White Latent Powder, 2 oz.

1- 107L Copper Metallic Latent Powder, 2 oz.

1- SB201L Silver/Black Latent Powder, 2 oz.

1- SG202L Silver/Gray Latent Powder, 2 oz.

5- 122L Fiberglass Latent Print Brushes

1- M114L Black Magnetic Powder, 1 oz.

1- M116L White Magnetic Powder, 1 oz.

1- SBM9 Silver/Black Magnetic Powder, 1 oz.

1- 125L Standard Magnetic Applicator

1- 130LT 1.5" x 2" Clear Hinge Lifters, 24 each

6- 131LB1 2" x 4" Black Hinge Lifters

6- 131LW1 2" x 4" White Hinge Lifters

6- 127LW1 2" x 4" White RubberGel Lifters

6- 127LB1 2" x 4" Black RubberGel Lifters

1- 131LT4 4" x 4" Clear Hinge Lifters, 12 ea.
- 1- 144L 1.5" x 360" Clear Lift Tape

1- 145L 1.5" x 360" Frosted Lift Tape

1- LB0021 Reversible Backing Sheet Pad, 50 Sheets

1- PFP700 PrintMatic Fingerprint Pad

1- FPT270A Elimination Fingerprint Form Pad

10- FPT1C1 Super Cleaner Towelettes

1- 317P 3" Magnifier

1- KCP115 LED Penlight w/batteries

1- 603E 1" x 500" Evidence ID Tape

1- KCP1141 Retractable Measuring Tape

1- KCP110 Scissors, 5"

1- KCP116 Pocket Notebook w/pen

12- ZTE101 Chain of Possession Labels, 3.5" x 4.5"

12- 608E1 Evidence Tags with Ties

8- 620E1 3" x 5" Evidence Bags

8- 621E1 4" x 10" Evidence Bags

8- 622E1 8" x 12" Evidence bags

1- KCP224 Plastic Utility Case

1- Aluminum Attaché Case, 18" x 13" x 5"

No. LPS800 Latent Print Finder Kit

Search Latent Print Specialist Kit

This kit meets the needs for all investigative branches of law enforcement agencies. It features the latest latent print development and lifting techniques.



LP303A Contents:

- 1- 101L Black Latent Powder, 2 oz.

1- 103L White Latent Powder, 2 oz.

1- SB201L Silver/Black Latent Powder, 2 oz.

1- SG202L Silver/Gray Latent Powder, 2 oz.

1- SR301L Silver/Red Latent Powder, 2 oz.

1- M114L Black Magnetic Powder, 1 oz.

1- M116L White Magnetic Powder, 1 oz.

1- SBM9 Silver/Black Magnetic Powder, 1 oz.

1- SBM10 Silver/Gray Magnetic Powder, 1 oz.

1- 202C Ninhydrin Spray, 6 oz.

4- DF201 Iodine Fuming Guns

4- DCA1 Iodine Print Enhancers

1- AMP2066 Iodette Ampoules, 6 each

1- CNA2000 FINDER Cyanoacrylate Packets, 5/pk

5- 118L Regular Powder Brushes

2- 122L Fiberglass Latent Print Brushes

1- 125L Standard Magnetic Applicator

1- 123LB Black Feather Duster

1- 123LW White Feather Duster

2- SP501 Silver Transfer Plates, 2" x 2"

1- KCP226 Suction Cup Plate Holder

4- 131LT1 Clear Hinge Lifters, 2" x 4"

4- 131LB1 Black Hinge Lifters, 2" x 4"

4- 131LW1 White Hinge Lifters, 2" x 4"

6- 127LW1 White RubberGel Lifters, 2" x 4"

6- 127LB1 Black RubberGel Lifters, 2" x 4"

1- 144L2 Clear Lift Tape, 2" x 360"

1- LB0021 Reversible Backing Sheet Pad, 50 Sheets

10- LPB1001 Black Backing/Sketch Cards, 3" x 5"
- 10- LPW1001 White Backing/Sketch Cards, 3" x 5"

1- PFP700 PrintMatic Fingerprint Pad

1- FPT263 Cardholder

1- FPT270A Elimination Fingerprint Form Pad

10- FPT1C1 Super Cleaner Towelettes

20- FC3301 Fingerprint Record cards, 8" x 8"

1- PM283 Postmortem Inking Tool

1- PMNS60 Postmortem Cardholder

1- PMFS500 Postmortem Finger Straightener

10- FC345R1 Postmortem Record Strips, Right Hand, 8" x 1.5"

10- FC345L1 Postmortem Record Strips, Left Hand, 8" x 1.5"

1- 317P 3" Magnifier

1- KCP115 LED Penlight w/batteries

1- 603E 1" x 500" Evidence ID Tape

1- KCP1141 Retractable Measuring Tape

3- EPS30W1 Photo Evidence Rulers, 6"

1- KCP110 Scissors, 5"

1- 600E .5" x 500" Photo Evidence Rule Tape

1- KCP116 Pocket Notebook w/pen

12- 621E1 Evidence Bags, 4" x 10"

8- 622E1 Evidence Bags, 8" x 12"

1- 611E Black Evidence Marker

1- KCP145 White China Marker

1- KCP224 Molded, Polypropylene Case, 10.375" x 4.625" x 1.75"

1- LP303C Black, Molded Copolymer Carrying Case with Handle and Insert, 27.5" x 16.5" x 7"

No. LP303A Latent Print Specialist Kit

Master Expert Latent Print Kit

You won't need another kit to approach different crime scene scenarios. It includes a variety of methods for the many surfaces you approach. With this kit, you'll be able to successfully develop latent prints in the field or laboratory.



MEL500 Contents:

- 1- 101L Silk Black Latent Powder, 2 oz. (59ml)

1- 103L Indestructible White Latent Powder, 2 oz. (59ml)

1- SB201L Silver/Black Latent Powder, 2 oz. (59ml)

1- SG202L Silver/Gray Latent Powder, 2 oz. (59ml)

1- SR301L Silver/Red Safecracker Latent Powder, 2 oz. (59ml)

2- 122L Fiberglass Latent Print Brushes

5- 118L Regular Powder Brushes

1- M114L Black Magnetic Latent Powder, 1 oz. (30ml)

1- M116L White Magnetic Powder, 1 oz. (30ml)

1- SBM9 Silver/Black Magnetic Latent Powder, 1 oz. (30ml)

1- SBM10 Silver/Gray Magnetic Latent Powder, 1 oz. (30ml)

1- SBM12 Silver/Red Magnetic Latent Powder, 1 oz. (30ml)

1- 125L Standard Magnetic Applicator

1- CNA2000 FINDER™ Cyanoacrylate Packets, 5/pk

4- DF201 Fumette Disposable Iodine Fuming Guns

4- DCA1 Iodine Print Enhancers

1- NSI609 Ninhydrin Spray, 8 oz. (240ml)

1- 205C Silver Nitrate Spray, 8 oz. (240ml)

1- SPR1008 SPR Dark, 250ml

1- 144L2 Transparent Lifting Tape, 2" x 360"

1- 145L2 Frosted Lifting Tape, 2" x 360"

12- 130LT1 Transparent Hinge Lifters, 1.5" x 2"
- 12- 130LW1 White Hinge Lifters, 1.5" x 2"

12- 130LB1 Black Hinge Lifters, 1.5" x 2"

4- 131LT41 Transparent Hinge Lifters, 4" x 4"

4- 131LW41 White Hinge Lifters, 4" x 4"

4- 131LB41 Black Hinge Lifters, 4" x 4"

2- 125LW1 White Rubber/Gel Palm Lifters, 7" x 9"

2- 125LB1 Black Rubber/Gel Palm Lifters, 7" x 9"

1- LB0011 Black Lifted Print Backing Pad, 5.5" x 8.5", 50 sheets

1- 317P Magnifier, 3"

1- KCP115 LED Penlight w/batteries

1- 601E Photo Evidence Rule Tape, 1" x 500"

1- 603E Evidence Identification Tape, 1" x 500"

1- KCP110 Scissors, 5" (12.7cm)

1- KCP1141 Retractable Measuring Tape

1- KCP116 Pocket Notebook w/pen

1- Water Dispensing Bottle, 8 oz. (240ml)

4- KCP117 Disposable Towels, 4-ply

8- ZTE011 Zip-Top Evidence Bags, 4" x 6"

3- ZTE021 Zip-Tip Evidence Bags, 9" x 12"

8- FPT1C1 Super Cleaner Towelettes

2- KCP224 Molded Polypropylene Storage Containers, 10.375" x 4.625" x 1.6875"

1- MEL500C Professional Black Molded Copolymer Case, Textured w/Folding Handle and Locking Latches

No. MEL500 Master Expert Latent Print Kit

Search Master Latent Print Investigation Kit

This robust kit gives you flexibility when processing your crime scenes. It consists of five separate kits that can be separated and used independently or used together. All together, this kit features supplies for several methods of processing crime scenes.



MLP2020A Contents:

- 1- FAC1000 FACII Kit

1- 101L Black Latent Powder, 2 oz.

1- 103L White Latent Powder, 2 oz.

1- SB201L Silver/Black Latent Powder, 2 oz.

1- SG202L Silver/Gray Latent Powder, 2 oz.

1- SR301L Silver/Red Latent Powder, 2 oz.

1- CBG203L Coin Box/Galvanic Latent Powder, 2 oz.

1- 118L Regular Powder Brush

2- 122L Fiberglass Latent Print Brushes

2- CFB100 Carbosmoove I Brushes

1- 159L Magnetic Latent Print Kit

1- NSI609 Ninhydrin Pump Spray, 8 oz.

1- SLPS300 Silver Latent Print Pump Spray, 8 oz.

4- DF201 Iodine Fuming Guns

4- DCA1 Iodine Print Enhancers

4- CNA20001 FINDER Cyanoacrylate Packets

1- 145L 1.5" x 360" Frosted Lift Tape

1- 144L 1.5" x 360" Clear Lift Tape

1- 144L4 4" x 360" Clear Lift Tape

1- 130LT 1.5" x 2" Clear Hinge Lifters, 24
- 1- 131LT 2" x 4" Clear Hinge Lifters, 12

1- LB0021 Reversible Backing Sheet Pad, 50 Sheets

1- LRL1234 Liquid Rubber Fingerprint Lifter Kit

1- EFP90PF Crime Scene Fingerprint Elimination Kit

1- 317P 3" Magnifier

1- KCP115 LED Penlight w/batteries

1- 600E .5" x 500" Photo Rule Tape

1- 603E 1" x 500" Evidence ID Tape

1- KCP114 6" Retractable Measuring Tape

3- EPS30W1 6" Photo Evidence Rulers

1- KCP110 5" Scissors

1- KCP116 Pocket Notebook w/pen

12- 621E1 4" x 10" Evidence Bags

8- 622E1 8" x 12" Evidence Bags

1- 611E Black Evidence Marker

1- KCP145 White China Marker

1- KCP224 Molded Polypropylene Case, 10.375" x 4.625" x 1.75"

1- MLP2020AC Black Molded Copolymer Carrying Case with Inserts, 27.5" x 16.5" x 7"

No. MLP2020A Master Latent Print Investigation Kit



**Pricing Information:**  
For current pricing visit  
www.sirchie.com, or  
call 800.356.7311



**Often Bought Together:**  
Indicates items often  
purchased in conjunction  
with other items.

Type II Burglary Fingerprint ID Kit

Originally designed for the military, this kit has what you need for finding, developing, and lifting print evidence at the crime scene.



355TYPE2 Contents:

- |   |  |
|---|--|
| 1- 101L Black Latent Powder, 2 oz.              | 2- KCP242 Soft Toothbrushes                              |
| 1- 102L Gray Latent Powder, 2 oz.               | 1- KCP309 CSI Pocket Knife                               |
| 1- M114L Black Magnetic Powder, 1 oz.           | 1- KCP110 5" Scissors                                    |
| 1- M117L Gray Magnetic Powder, 1 oz.            | 1- KCP1141 Retractable Measuring Tape                    |
| 1- 118L Regular Powder Brush                    | 1- 144L 1.5" x 360" Clear Lift Tape                      |
| 1- 122L Fiberglass Brush                        | 1- 131LB4 4" x 4" White Hinge Lifters, 12 each           |
| 1- 125L Standard Magnetic Applicator            | 1- 131LB4 4" x 4" Black Hinge Lifters, 12 each           |
| 1- LB003 3" x 5" Backing Sheet Pad              | 6- 127LW1 2" x 4" White RubberGel Lifters                |
| 1- 130LT 1.5" x 2" Clear Hinge Lifters, 24 each | 6- 127LB1 2" x 4" Black RubberGel Lifters                |
| 1- 130LB 1.5" x 2" Black Hinge Lifters, 24 each | 20- FC3431 3" x 5" Reversible Backing Cards              |
| 1- 130LW 1.5" x 2" White Hinge Lifters, 24 each | 10- FC3301 8" x 8" Record Cards                          |
| 1- 131LT 2" x 4" Clear Hinge Lifters, 12 each   | 1- 317P 3" Magnifier                                     |
| 1- 131LB 2" x 4" Black Hinge Lifters, 12 each   | 1- FPT264 Fingerprint Cardholder                         |
| 1- 131LW 2" x 4" White Hinge Lifters, 12 each   | 1- 603E 1" x 500" Evidence Tape                          |
| 3- 621E 4" x 10" Evidence Bags                  | 1- 600E .5" x 500" Photo Evidence Tape                   |
| 1- KCP139 Pair of Tweezers                      | 10- FPT1C1 Super Cleaner Towelettes                      |
| 1- KCP243 Screwdriver                           | 1- KCP224 Molded, Polypropylene Case, 10" x 4.5" x 1.75" |
| 1- KCP115 LED Penlight w/batteries              | 1- Aluminum Attaché Case, 18" x 13" x 5"                 |
| 1- KCP244 #7 White Coin Envelope                |  |

No. 355TYPE2      Type II Burglary Fingerprint ID Kit

Type III Postmortem Fingerprint Kit

This postmortem fingerprint kit is designed specifically for preparing and recording inked fingerprints of deceased subjects.



355TYPE3 Contents:

- |   |  |
|---|--|
| 1- 317P 3" Magnifier                                  | 2- FC345R1 Postmortem Record Strips, Right, 8" x 1.5"    |
| 8- KRL103D Tissue Builder Solution, .5 oz.            | 15- KCP217 Cotton Balls                                  |
| 2- KRL1061 Tissue Builder Solvent, 1 oz.              | 3- 621E1 Bags, 4" x 10"                                  |
| 1- 634CID Silicone Solution, 2 oz.                    | 2- KCP242 Soft Toothbrushes                              |
| 1- TM1 Silicone Catalyst, 0.5 oz.                     | 4- KCP148 Syringes, 3cc Disposable                       |
| 1- PM283 Postmortem Inking Tool                       | 1- KCP115 LED Penlight w/batteries                       |
| 2- KRL1052 Finger Tissue Cleaner, 2 oz.               | 10- KCP117 Disposable Towels, 4-Ply                      |
| 1- PMNS60 Postmortem Record Strip Holder              | 1- KCP152 Molded Polypropylene Case, 8.5" x 4.5" x 1.75" |
| 12- FC345L1 Postmortem Record Strips, Left, 8" x 1.5" | 1- Aluminum Attaché Case, 18" x 13" x 5"                 |

No. 355TYPE3      Type III Postmortem Fingerprint Kit

Evidence Technician Kit 1

For the crime scene investigator, this kit has tools for a wide variety of methods to develop latent prints on many surfaces, such as regular and magnetic powders, cyanoacrylate, iodine, and small particle reagent. Also includes bags and tools for physical evidence collection.



ETK1 Contents:

- |   |  |
|---|--|
| 1- 101L Black Latent Powder, 2 oz.                    | 1- SPR1001 500ml Dark Small Particle Reagent       |
| 1- 103L White Latent Powder, 2 oz.                    | 1- KCP139 Plastic Tweezers                         |
| 1- SB201L Silver/Black Latent Powder, 2 oz.           | 1- KCP138 Disposable Scalpel                       |
| 1- LL701 Red Fluorescent Latent Powder, 2 oz.         | 1- GL000 Carbide Tip Scribe                        |
| 1- LL703 Green Fluorescent Latent Print Powder, 2 oz. | 1- KCP1141 Retractable Measuring Tape              |
| 3- 122L1 Kit Size Fiberglass Brushes                  | 1- KCP115 Penlight w/batteries                     |
| 3- 123LW White Feather Brushes                        | 1- KCP110 5" Scissors                              |
| 1- M115L Midnight Black Magnetic Powder, 1 oz.        | 1- 317P 3" Magnifier                               |
| 1- M116L White Magnetic Powder, 1 oz.                 | 1- CUV100T UV Minilight                            |
| 1- 125L Permanent Magnetic Wand                       | 4- KCP230 AA Cell Batteries                        |
| 1- 144L 1.5" Clear Lift Tape                          | 1- SM1000 SIRCHMARK™ Integrity Tape                |
| 1- 144L2 2" Clear Lift Tape                           | 5- IEB40001 4" x 7.5" Integrity Bags               |
| 1- FC343 Reversible Backing Cards, 100 each           | 5- IEB75001 7.5" x 10.5" Integrity Bags            |
| 1- AMP2066 Iodine Ampoules, 3gr, 6 each               | 5- IEB12001 12" x 15.5" Integrity Bags             |
| 1- DCA16 Iodine Print Enhancers, 6 each               | 5- EB001P1 Kraft Evidence Bags, 7" x 4.5" x 13.75" |
| 1- CNA102 Cyanoacrylate Fuming Compound, 20gr         | 5- EB002P1 Kraft Evidence Bags, 8" x 5" x 18"      |
|   | 1- KCP152 Molded, Polypropylene Case               |
|   | 1- Aluminum Attaché Case, 18" x 13" x 5"           |

No. ETK1      Evidence Technician Kit 1

Search Latent Print Organizer Kit

This kit is the ultimate toolbox for locating, developing, and processing latent prints at the scene. It features two drawers in which components are neatly organized and easy to find, built into an easy-to-carry case.



LP500 Contents:

- |  |   |
|--|---|
| 1- 101L1 Silk Black Latent Powder, 1 oz.       | 1- 145L 1.5" x 360" Frosted Lift Tape   |
| 1- 103L1 White Latent Powder, 1 oz.            | 1- 131LB 2" x 4" Black Hinger Lifters, 12 each                                  |
| 1- SB201L Silver/Black Latent Powder, 1 oz.    | 1- 131LW 2" x 4" White Hinge Lifters, 12 each                                   |
| 1- SR301L Silver/Red Latent Powder, 1 oz.      | 6- 127LW1 2" x 4" White Rubber/Gel Lifters                                      |
| 1- ASP50D Dark Adhesive-Side Powder, 50g       | 6- 127LB1 2" x 4" Black Rubber/Gel Lifters                                      |
| 1- ASP51 EZFLO Solution, 6 oz.                 | 1- DF2016 Fumette Iodine Fuming Gun, 6 each                                     |
| 1- TRA20 Tape Release Agent, 1 oz.             | 1- Small Particle Reagent Rinse Bottle  |
| 1- SPR1001 Dark Small Particle Reagent, 500ml  | 1- 317P 3" Magnifier  |
| 1- SPR2001 White Small Particle Reagent, 500ml | 1- KCP1141 Retractable Measuring Tape   |
| 1- M114L Black Magnetic Powder, 1 oz.          | 1- KCP115 LED Penlight w/batteries  |
| 1- M116L White Magnetic Powder, 1 oz.          | 1- KCP110 5" Scissors   |
| 1- MAG100 MAGNUCLEI Magnetic Powder, 1 oz.     | 10- ZTE011 4" x 6" Zip-Top Evidence Bags  |
| 2- 122L1 Kit Size Fiberglass Brushes           | 10- EIL011 Crime Evidence Labels  |
| 1- 123LB Black Feather Brush                   | 1- KCP152 Molded, Copolymer Case, 8.5" x 4.5" x 1.75"                           |
| 1- 123LW White Feather Brush                   | 1- LP5001 High-Impact, Copolymer Carrying Case with Handles, 18" x 13" x 11.75" |
| 2- 118L Regular Powder Brushes                 |   |
| 1- 125L Permanent Magnetic Wand                |   |
| 1- 144L 1.5" x 360" Clear Lift Tape            |   |

No. LP500      Latent Organizer Kit



**Pricing Information:**  
For current pricing visit  
www.sirchie.com, or  
call 800.356.7311

**Often Bought Together:**  
Indicates items often  
purchased in conjunction  
with other items.

Kit Carrying Cases

Plastic Copolymer Carrying Cases

We offer plastic kit cases for replacement or personal custom built cases. They're impact resistant with double wall construction. Blank foam inserts are available to you.



No. KCP1000	8 1/2" x 7 3/4" x 3 5/8" Case w/out foam
No. KCP1000F	8 1/2" x 7 3/4" x 3 5/8" Case w/foam
No. KCP1001	11 3/8" x 7" x 3 5/8" Case w/out foam
No. KCP1001F	11 3/8" x 7" x 3 5/8" Case w/foam
No. KCP1002	12 1/16" x 8 15/16" x 4 3/4" Case w/out foam
No. KCP1002F	12 1/16" x 8 15/16" x 4 3/4" Case w/foam
No. KCP1003	14" x 10 3/4" x 5 3/4" Case w/out foam
No. KCP1003F	14" x 10 3/4" x 5 3/4" Case w/foam
No. KCP1004	17" x 13" x 7 3/8" Case w/out foam
No. KCP1004F	17" x 13" x 7 3/8" Case w/foam
No. KCP1005	27 1/2" x 16" x 7" Case w/out foam
No. KCP1005F	27 1/2" x 16" x 7" Case w/foam

Aluminum Attaché Cases

These sleek, lightweight aluminum attaché cases include a combination lock and an expandable folder for storing reports and other documents.



No. KCP1006	18" x 13" x 5" Case w/out foam
No. KCP1006F	18" x 13" x 5" Case w/foam

Gray Plastic Utility Cases

We offer gray plastic utility cases as replacements for our kit cases or for building your own custom kits. Cases feature positive latches, tough recessed handles and tongue-and-groove construction. Cases can be purchased with or without the blank 2"-thick black ethafoam insert.



No. KCP1100	12 1/8" x 7 1/4" x 4 1/2" Case w/out foam
No. KCP1100F	12 1/8" x 7 1/4" x 4 1/2" Case w/foam
No. KCP1200	12 1/8" x 7 1/4" x 5 1/2" Case w/out foam
No. KCP1200F	12 1/8" x 7 1/4" x 5 1/2" Case w/foam
No. KCP1400	14 3/8" x 8" x 7" Case w/out foam
No. KCP1400F	14 3/8" x 8" x 7" Case w/foam
No. KCP1700	16 3/8" x 8 5/8" x 7" Case w/out foam
No. KCP1700F	16 3/8" x 8 5/8" x 7" Case w/foam
No. KCP1800	17 1/2" x 10 1/4" x 8 5/8" Case w/out foam
No. KCP1800F	17 1/2" x 10 1/4" x 8 5/8" Case w/foam
No. KCP2100	19" x 11 1/2" x 10 1/2" Case w/out foam
No. KCP2100F	19" x 11 1/2" x 10 1/2" Case w/foam

Tactical Bag Latent Print Kits

Search Tactical Latent Print Kit

Housed in our Tactical nylon bag, this kit is light-weight and versatile but tough enough for any scenes. This all-inclusive kit has our most popular regular and magnetic powders, along with a Flawless fingerprint ink pad for recording elimination prints.



TLK100 Contents:

- 1- 101L Silk black latent powder 2 oz.

1- 103L White latent powder 2 oz

1- SG202L Silver/Gray latent print powder, 2 oz.

3- 122L1 Kit size fiberglass latent print brushes

1- 130LT Transparent hinge lifters, 24 ea.

12- 130LB1 Black hinge lifters

12- 130LW1 White hinge lifters

6- 131LT1 Transparent hinge lifters

6- 131LB1 Black hinge lifters

6- 131LW1 White hinge lifters

2- 127LW1 White rubber/gel lifters
- 2- 127LB1 Black rubber/gel lifters

1- PFP700 PrintMatic Flawless fingerprint ink pad

1- FPT270A Elimination fingerprint form pad

1- 379M Attached case magnifier

1- 603E Evidence marking tape

6- 621E1 Evidence preserver bags, 4" x 10"

9- FPT1C1 Super cleaner towelettes

1- SKB VTAC ™ 1050D nylon case featuring YKK zippers, Fold out organizing panel, 3 compartments, Heavy duty nylon handles, Non-slip padded shoulder strap & High impact plastic D rings

No. TLK100	Tactical Latent Print Kit
No. TLK100B	Small Tactical Bag (only)

Search II Tactical Crime Scene Latent Print Kit

An easy-to-use kit, you'll be able to develop latent prints at the crime scene with Ninhydrin and Iodettes. It features removable, stackable foam inserts to provide secure storage for powder jars and for easy access.



TLK200 Contents:

- 1- 101L Silk black latent powder, 2oz.

1- 103L White latent powder, 2oz.

1- SB201L Silver/black latent powder, 2 oz.

2- 118L Regular powder brushes

2- 122L Fiberglass latent print brushes

1- M114L Black magnetic latent powder, 1 oz.

1- SBM10 Silver/Gray magnetic latent powder, 1 oz.

1- 125L Standard magnetic applicator

1- 202C Ninhydrin spray, 6oz. Aerosol

1- AMP2066 Iodette ampoules, 6 ea.

3- DCA1 Iodine enhancement applicators

3- ZTE021 Iodette fuming bags, 9" x 12"

1- 130LT Transparent hinge lifters, 1.5" x 2", 24 ea.

4- 131LT1 Transparent hinge lifters, 2" x 4"

4- 131LB1 Black hinge lifters, 2" x 4"

4- 131LW1 White hinge lifters, 2" x 4"

1- 144L Transparent lifting tape 1.5" x 360"
- 1- LB0021 Reversible backing sheet pad, 50 sheet

1- PFP700 PrintMatic™ Flawless fingerprint pad

1- FPT270A Elimination fingerprint form pad

10- FPT1C1 Super cleaner towelettes

1- 379M Attached case magnifier

1- KCP115 Penlight w/batteries

1- 603E Evidence identification tape, 1" x 500"

1- KCP114 Retractable measuring tape

1- KCP110 Scissors 5"

10- 621E1 Evidence bags, 4" x 10"

1- LKB VTAC ™ 1050D nylon case featuring YKK® zippers, Fold out organizing panel, 3 compartments, Heavy duty nylon handles, Non-slip padded shoulder strap & High impact plastic D rings.

No. TLK200	Search II Tactical Crime Scene Latent Print Kit
No. TLK200B	Large Tactical Bag (only)



**Pricing Information:**  
For current pricing visit  
www.sirchie.com, or  
call 800.356.7311

**Often Bought Together:**  
Indicates items often  
purchased in conjunction  
with other items.

Search Tactical Professional Latent Print Kit

This field kit incorporates the finest brush applicators for powders—and a selection of Sirchie’s finest latent print powders. With this system, multiple colored powders may be used effectively with “no intermix,” and it is cost effective and efficient. All the necessary support components are included to aid in producing the desired result—latent print development. Kit includes a removable foam insert for securing and protecting powder jars.



TLK300 Contents:

- 1- 145L2 Frosted fingerprint lifting tape, 2" x 360"

12- 130LT1 Transparent hinge lifters, 1.5" x 2"

6- 131LT1 Transparent hinge lifters, 2" x 4"

6- 131LW1 White hinge lifters, 2" x 4"

6- 131LB1 Black hinge lifters, 2" x 4"

6- 127LW1 White rubber lifters, 2" x 4"

6- 127LB1 Black rubber lifters, 2" x 4"

3- 122L1 Kit size fiberglass brushes

3- 118L Regular Powder Brushes

1- 101L Silk black latent powder, 2 oz.

1- 103L White latent powder, 2 oz.

1- SB201L Silver/Black latent powder, 2 oz.
- 1- SR301L Silver/Red latent powder, 2 oz.

1- LB0031 Backing sheet pad, 3" x 5", 50 sheet

1- 379M attached case magnifier

1- KCP110 Scissors 5"

10- ZTE011 Evidence bags, 4" x 6"

10- EIL011 Crime evidence labels

1- LKB VTAC™ 1050D nylon case featuring, YKK® zippers, Fold out organizing panel, 3 compartments, Heavy duty nylon handles, Non-slip padded shoulder strap & High impact plastic D rings.

No. TLK300 Tactical Professional Latent Print Kit

Search Tactical Master Expert Latent Print Kit

This robust kit gives you everything you need for developing and processing latent prints at a crime scene. Additionally, the nylon bag ensures years of rugged use while still keeping your tools organized and easy-to-find.



TLK400 Contents:

- 1- 101L Silk black latent powder, 2 oz. (59ml)

1- 103L White latent powder, 2 oz. (59ml)

1- SB201L Silver/black latent powder, 2 oz. (59ml)

1- SG202L Silver/Gray Latent Print Powder, 2oz. (59ml)

1- SR301L Silver/red latent powder, 2oz. (59ml)

2- 122L Fiberglass Latent Print Brush

5- 118L SEARCH Regular Powder Brushes

1- M114L Magnetic Powder, Regular Black, 1oz. (30ml)

1- M116L Magnetic Powder, White, 1oz. (30ml)

1- SBM9 Magnetic Powder, Silver/Black, 1oz. (30ml)

1- SBM10 Magnetic Powder, Silver/Gray, 1oz. (30ml)

1- SBM12 Magnetic Powder, Silver/Red, 1 oz. (30ml)

1- 125L Standard Magnetic Powder Applicator

1- NSI609 Special Formula Ninhydrin Spray, 8oz. (240ml)

1- 205C Silver Nitrate Spray, 8oz. (240ml)

1- SPRI008 Small Particle Reagent, dark 250ml

4- DF201 Fumette™ Disposable Iodine Fuming Guns

4- DCA 1 SEARCH® Iodine Print Enhancers

6- CNA20001 The Finder™ Cyanoacrylate Developing Packets

1- 144L2 Lifting Tape, Transparent, 2" x 360"
- 1- 145L2 Lifting Tape, Frosted, 2" x 360"

12- 130LT1 Hinge Lifters, 1.5" x 2" transparent

12- 130LW1 Hinge Lifters, 1.5" x 2" white

12- 130LB1 Hinge Lifters, 1.5" x 2" black

4- 131LT41 Hinge Lifters, 4" x 4" transparent

4- 131LW41 Hinge Lifters, 4" x 4" white

4- 131LB41 Hinge Lifter, 4" x 4" black

2- 125LW1 Rubber gel lifters: 7" x 9" white

2- 125LB1 Rubber gel lifters: 7" x 9" black

1- LB0011 Lifted Print Backing Cards 50/pad

1- 317P Fingerprint magnifier, 3" dia.

1- KCP115 Penlight w/batteries

1- 601E Photo Evidence Rule Tape, 1" x 30' (2.5cm x 12.7m)

1- 603E Evidence Identification Tape, 1" x 30' (2.5cm x 12.7m)

1- KCP114 Retractable measuring tape, 6' (2m)

1- KCP110 Scissors

1- KCP116 Pocket Notebook w/pen

1- Water dispensing bottle, 8oz. (240ml)

4- KCP117 Disposable towels, 4-ply

8- ZTE011 Evidence Bags, 4" x 6" (10.2cm x 30.5cm)

3- ZTE021 Evidence Bags, 9" x 12" (22.9cm x 30.5cm)

8- FPT1C1 Super cleaner towelettes

1- Side Trip Briefcase Black Nylon Tactical Bag, 16.5"X12.5"X5.5"

No. TLK400 Tactical Master Expert Latent Print Kit

No. TLK400B Side Trip Briefcase Tactical Bag (only)

Search Tactical Master Latent Print Investigation Kit

This kit includes supplies for processing latent fingerprints using both regular and magnetic powders. All the necessary support components are included to aid in latent print development, collection and preservation.



TLK500 Contents:

- 1- FAC 101 FACI® Powder Brush Combo, Silk blk

1- FAC 103 FACI® Powder Brush Combo, white

12- 130LT1 Hinge Lifter, 1.5" x 2" trans

4- 131LB1 Hinge Lifter, 2" x 4" black

4- 131LT1 Hinge Lifter, 2" x 4" trans

4- 131LW1 Hinge Lifter, 2" x 4" white

1- M114L Magnetic Latent Print Powder, Regular Black, 1 oz. (30ml)

1- M116L Magnetic Latent Print Powder, White, 1 oz. (30ml)

1- M117L Magnetic Latent Print Powder, Gray, 1 oz. (30ml)

1- SBM9 Magnetic Latent Print Powder, Silver/Black, 1 oz. (30ml)

1- 125L Standard Magnetic Powder Applicator

1- 101L Silk black latent powder, 2 oz. (59ml)

1- 103L White latent powder, 2 oz. (59ml)

1- CBG203L Coin Box/Galvanic latent powder, 2 oz. (59ml)

1- SB201L Silver/black latent powder, 2 oz. (59ml)

1- SG202L Silver/Gray Latent Print Powder, 2 oz. (59ml)

1- SR301L Silver/red latent powder, 2 oz. (59ml)

4- 122L1 Kit Size Fiberglass Latent Print Brush

2- CFB100 Carbosmoove Brush

1- 144L Lifting Tape, Transparent, 1.5" x 360"

1- 145L Lifting Tape, Frosted, 1.5" x 360"

1- 144L4 Lifting Tape, Transparent, 4" x 360"

1- 133LTWB Hinge Lifters Super Assort

1- 127LB Rubber gel lifters: 2" x 4" black, 12/pack

1- 127LW Rubber gel lifters: 2" x 4" white, 12/pack

1- LB0021 Lifted Print Backing Cards 50/pad

1- NSI609 Special Formula Ninhydrin Spray, 8oz. (240ml)

1- SLPS300 Silver Latent Spray, 8oz. (240ml)

1- DFS300 DFO Spray Pump, 100ml
- 1- DF2016 Fumette™ Disposable Iodine Fuming Gun, 6 ea.

1- DCA16 SEARCH® Iodine Print Enhancers, 6ea.

1- CNA2000 Cyanoacrylate Developing System, 5 ea.

1- PFP700 PrintMatic™ Flawless Ink Pad

1- FPT270A Elimination Fingerprint Pad

24- FPT1C1 Super cleaner towelettes

1- 317P Fingerprint magnifier, 3" (76cm) dia.

1- KCP115 Penlight w/batteries

1- 600E Photo Evidence Rule Tape, ½" x 30' (1.3cm x 12.7m)

1- 603E Evidence Identification Tape, 1" x 30' (2.5cm x 12.7m)

1- KCP114 Retractable measuring tape, 6' (2m)

1- EPS30W Photo Evidence Rulers, 6" (15cm), 10 ea.

1- KCP110 Scissors

1- KCP116 Pocket Notebook w/pen

1- 611E Black evidence marker

1- KCP145 White china marker

1- MCM100B Mikrosil™ brown putty 7oz. (200gm) w/catalyst

1- MCM100W Mikrosil™ white putty 7oz. (200gm) w/catalyst

12- 621E1 Heat Seal Evidence Bags, 4" x 10" (10.2cm x 25.4cm)

8- 622E1 Heat Seal Evidence Bag, 8" x 12" (20.3cm x 30.5cm)

10- IEB40001 Integrity Evidence Bags, 4" x 7.5" (10.2cm x 19cm)

10- IEB75001 Integrity Evidence Bag, 7.5" x 10.5" (19cm x 26.7cm)

10- IEB12001 Integrity Evidence Bag, 12" x 15.5" (30.5cm x 39.4cm)

1- 118L Regular Powder Brush

1- Range Ready, Black Nylon Tactical Bag, 9" x 18" x 10"

No. TLK500 Tactical Master Latent Print Kit

No. TLK500B Range Ready Tactical Kit Bag (only)

Search Tactical Backpack Evidence Collection Kit

This kit has everything you need packed in a convenient backpack! Develop and process latent prints with regular and magnetic powder, Fumette disposable iodine fuming guns, small particle reagents, adhesive side powder, and more.



TLK600 Contents:

- 1- 101L1 Hi-Fi Volcano Latent Print Powder, Silk Black 1oz

1- 103L1 Hi-Fi Volcano Latent Print Powder, White 1oz

1- SB201L1 Hi-Fi Volcano Latent Print Powder, Silver Black 1oz

1- SR301L1 Hi-Fi Volcano Latent Print Powder, Silver Red, 1oz.

1- M114L Magnetic Latent Print Powder, Regular Black, 1oz.

1- M116L Magnetic Latent Print Powder, White, 1oz.

1- MAG100 MagNuclei™ Magnetic Latent Print Powder, 1oz

2- 122L1 Kit size fiberglass brushes

2- 118L Regular Powder Brush

1- 123LB Marabou Feather Brush, Black

1- 123LW Marabou Feather Brush, White

1- 125L Standard Magnetic Powder Applicator

1- 131LB Hinge Lifters, 2" x 4" black, 12/pack

1- 131LW Hinge Lifters, 2" x 4" white, 12/pack

6- 127LW1 White rubber lifters, 2" x 4"

6- 127LB1 Black rubber lifters, 2" x 4"

1- 144L Lifting Tape, Transparent, 1.5" x 360"

1- 145L Lifting Tape, Frosted, 1.5" x 360"

1- SPRI001 Small Particle Reagent, dark 500ml
- 1- SPR2001 Small Particle Reagent, white 500ml

1- 16 oz. SPR rinse bottle w/sprayer

1- ASD7D Adhesive-Side Developer, Dark 7oz. / 210ml

1- ASD7L Adhesive-Side Developer, Light 7oz. / 210ml

1- TRA20 Tape Release Agent, 1 oz. (29.5ml)

10- ZTE011 Evidence bags, 4" x 6"

10- EIL011 Crime evidence labels

10- IEB12001 Integrity Evidence Bags, 12" x 15.5"

10- IEB75001 Integrity Evidence Bags, 7.5" x 10.5"

10- IEB40001 Integrity Evidence Bags, 4" x 7.5"

1- FPT270PF PrintMatic™ Elimination Fingerprint Outfit

1- DF2016 Fumette™ Disposable Iodine Fuming Gun, 6 ea.

1- LB0031 Backing sheet pad, 3" x 5", 50 sheet

1- KCP110 Scissors 5"

1- KCP114 Tape Measure: 6' (2m)

1- 317P Magnifier, 3" dia.

1- KCP115 Penlight w/batteries

1- Black Nylon Rush 24 Backpack, 20" x 12" x 10"

No. TLK600 Tactical Backpack Evidence Collection Kit

No. TLK600B Rush 24 Backpack (only)