

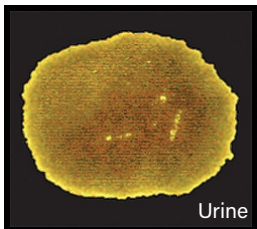


# Alternate Light Sources

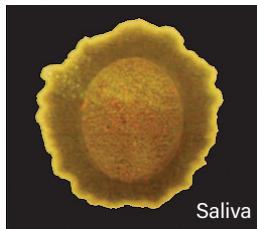
Alternate light sources provide light at different wavelengths that may or may not be visible to the naked eye. When used in combination with the proper filter, these various wavelengths of light can help visually identify different types of evidence.

**Alternate Light Sources are commonly used to identify:**

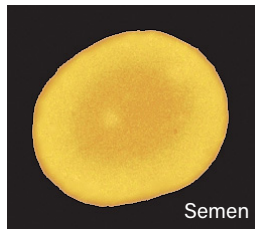
**Physiological fluids** (with 455nm blue & 365nm UV light)



Urine



Saliva



Semen

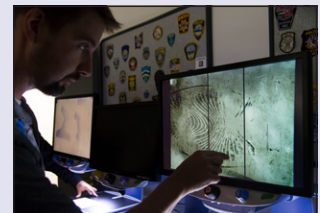
**Dust prints and other hidden evidence** (with oblique white light)



## Evidence Collection Course



Our popular Evidence Collection Accelerated Training Class gives you hands-on experience in limited class sizes covering the scientific methods of collection, identification, evaluation, and preservation of physical evidence. Our students love the teach-do method of instruction and take their knowledge back to the field as lifelong Sirchie graduates.



For more information about this and all other training courses, visit [www.sirchie.com](http://www.sirchie.com) or call us at (800) 356-7311.

## megaMAXX ALS System

This system has everything an investigator needs at the scene or in the lab for finding evidence with ALS. The kit holds several self-contained light sources. Other components are:

- Light Diffuser. A softer lighter is required for oblique viewing and photography. This diffuser will soften the LED lights
- ForensiTorch UV Light. This light should always be used in preliminary examining and locating evidence
- megaMAXX Tripod. You need both hands free during an investigation to take photos or process an area. This tripod has a flexible extension and can be precisely positioned

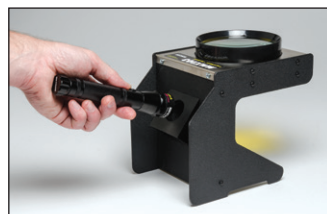


No. MMX300

megaMAXX ALS System

## megaMAXX Assistant

Easily identify items of interest and examine and compare evidence with the megaMAXX assistant. It has a magnifying lens with interchangeable barrier filters (yellow, red, and orange). Use one of the seven lights from the megaMAXX system to make invisible evidence visible.

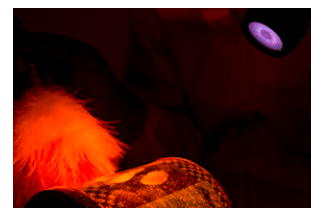


No. MMX203

megaMAXX Assistant

## Tactical Max Forensic Light Kit

The Tactical MAX ALS Light Kit provides all the light needed to conduct an on-scene forensic investigation: white, 365nm UV, and 455nm blue. Newly improved, each handheld forensic light is made of tough anodized aluminum, contains an extremely bright 1-Watt LED, and comes with rechargeable batteries. A rubber diffuser fits securely on each flash light and a flexible tripod can serve as a third hand.



Using the 455nm blue light and barrier filter to develop fingerprints with fluorescent powders



Attach lights to stationary objects with the included flexible tripod.

No. TMX200

Tactical Max Forensic Light Kit

No. TMXFT1

Flexible Tripod (only)

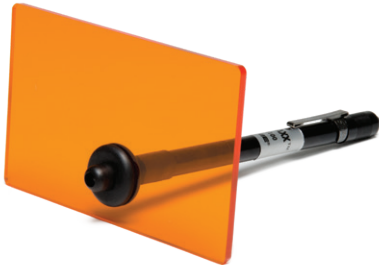


**Pricing information:**  
For current pricing visit  
[www.sirchie.com](http://www.sirchie.com), or  
call (800) 356-7311



### Micro BLUEMAXX

This small light source produces the perfect amount of illumination for searching small areas. It's the shape of a pen but emits a powerful blue LED light and comes with a barrier filter. The light and filter can fit in a shirt pocket.

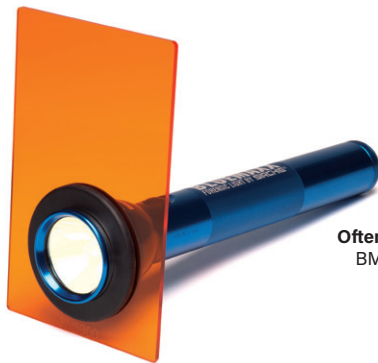


No. BMMB100

Micro BLUEMAXX

### BLUEMAXX Forensic Light Source

One of our most popular BLUEMAXX light sources, it comes with a barrier filter and can also be used for fluorescent photography. Operates on three (3) "D" cell batteries (not included).



Often bought with:  
BM300CC Plastic  
Carry Case



No. BM300

BLUEMAXX Forensic Light Source

### Mini BLUEMAXX III Kit

Excellent for locating and photographs of a variety of forensic evidence. This kit features a 455nm LED light with batteries & diffuser, orange barrier filter goggles, and carrying case.



No. BMK250A

Mini BLUEMAXX III Kit

### BLUEMAXX Rechargeable Forensic Light with LED Bulb

One of our most popular BLUEMAXX light sources, it comes with matched excitation & barrier filters, rechargeable battery, and 110/220V charger.



Often bought with:  
BM500CC Plastic  
Carry Case



No. BM500LED BLUEMAXX Rechargeable Forensic Light w/LED Bulb

### BLUEMAXX Evidence Viewer

Easily identify items of interest, examine and compare evidence with this evidence viewer. It has two built-in light sources:

- A diffused white LED light for examining evidence with normal light
- A BLUEMAXX light for examining physiological fluids and latent prints developed with fluorescent powders and chemicals.

No. BMV100

BLUEMAXX Evidence Viewer, 110V AC

No. BMV100220

BLUEMAXX Evidence Viewer, 220V AC





**Often Bought Together:**  
Indicates items often  
purchased in conjunction with  
other items.

## BLUEMAXX Accessories

The two key components for the BLUEMAXX forensic lights are Excitation filters and the Barrier Filter. The Excitation filter fits over the light itself. The Barrier filter is used to make the evidence visible to the operator. Our excitation filters and barrier filters have high durability and superior spectral stability.

### Excitation Filters

For wavelengths 400nm-500nm. Available for Mag-Lite®, rechargeable Mag-Lite®, and Streamlight.



**No. BMF100B** **Excitation Filter (for Mag-Lite)**

**No. BMF100R** **Excitation Filter (for Rechargeable Mag-Lite)**

**No. BMF101** **Excitation Filter (for Streamlight)**

### Barrier Filters

Available for use with the Mag-Lite® and the rechargeable Mag-Lite® as well as an 8" x 8" (20.3cm x 20.3cm) hand-held version.



**No. BOVS88** **Hand-held Barrier Filter (8" x 8")**

**No. BM300S** **Barrier Filter (for Mag-Lite)**

**No. BM500S** **Barrier Filter (for Rechargeable Mag-Lite)**

## BLUEMAXX Amalgam Master Kit

This Master kit features the same 470nm blue light source as the standard BLUEMAXX Amalgam kit with the addition of fluorescent fingerprint powders and applicators.



**No. BMA100** **BLUEMAXX Amalgam Master Kit**

## BLUEMAXX Amalgam Kit

With this kit, investigators will have a multi-purpose focused six powerful LED Beam light that can be hand-held, head-mounted, or table-mounted. The light source wavelength is a 470nm, an ideal wavelength for locating many forms of physical evidence.



**No. BMA200** **BLUEMAXX Amalgam Kit**

## BLUEMAXX Patrol Kit

This kit offers the basics in finding physiological fluids, such as semen, saliva, and urine and locating and lifting latent print evidence. Investigators should have this kit to find invisible evidence and collect latent prints with fluorescent powders.



**No. BMK700** **BLUEMAXX Patrol Kit w/BM300 Light**

**No. BMK705** **BLUEMAXX Patrol Kit w/BM500LED Kit**

**Pricing information:**  
For current pricing visit  
[www.sirchie.com](http://www.sirchie.com), or  
call (800) 356-7311



### BLUEMAXX Latent Specialist Kit

This kit has more of a variety of fluorescent powders and applicators. Both regular and magnetic fingerprint powders for finding, developing, enhancing, and lifting latent prints. With BLUEMAXX illumination systems, you can also find potential physiological fluid for collection and laboratory analysis.



**No. BMK750 BLUEMAXX Latent Specialist Kit w/BM300 Light**

**No. BMK755 BLUEMAXX Latent Specialist Kit w/BM500LED Light**

### BLUEMAXX Master Fuming and Evidence Locating Kit

This top-of-the-line kit provides the investigator the tools to handle a variety of crime scene circumstances. With this kit, you can locate physiological fluids, locate and develop fingerprints, and enhance prints with forensic dyes and powders. This kit includes the CYANOWAND Kit for on-the-spot glue-fuming at the crime scene.



**No. MFE1000 BLUEMAXX Master Fuming and Evidence Locating Kit**

### BLUEMAXX Digital Latent Evidence Photo System

This is the all-in-one kit for finding physiological evidence, finding and lifting latent prints, and photographing everything. Digital photography is the method of choice for crime scene photographers. To make it easier for you, we combined a high-resolution digital camera with this vital recovery system: our BLUEMAXX system and fluorescent latent fingerprint powders. The camera has automatic and manual settings to offer flexibility for photography with BLUEMAXX.

**No. BML100 BLUEMAXX Digital Latent Evidence Photo System**







**Often Bought Together:**  
Indicates items often purchased in conjunction with other items.

## Forensic Alternate Light Source

Physical evidence is the backbone of criminal investigations. If the perpetrator has left some form of evidence behind, this tool can help you find it, tie a potential perpetrator to the scene, and help prosecutors file formal charges. Features include:

- Fully portable for unlimited movement around a crime scene. It can be hand-held or mounted on a tripod and operates by battery
- Filters included with the light source have a selection of six different wavelengths, covering 365nm to 530nm
- A high-intensity xenon lamp which is ideal to search for hair, fibers, footwear evidence, and more



**Often bought with:**  
Replacement Lamp (FAL203), 120V AC Adapter Kit (FAL306), 220V AC Adapter Kit (FAL306220), 12V DC Battery Pack (FAL309), 12V DC Battery Set (FAL309B)



**No. FAL3000**

**Forensic Alternate Light Source**

## Longwave UV Mini Light Source

This light is ideal for viewing invisible stains, powders, pastes, and bruises that haven't yet appeared on the skin. It operates at a 360nm wavelength. A Mini Light Tripod is available to use with the Longwave UV Mini Light Source.



**Often bought with:**  
Replacement Bulb (6762), Mini Light Tripod (MLT100)



**No. CUV100T**

**Longwave UV Mini Light**

## Longwave Light Sources

Preliminary evidence examination should be conducted with the use of longwave UV light. Longwave light sources are ideal for locating:

- Physiological Fluids (semen, saliva, urine)
- Counterfeit Currency
- Fluorescent Latent Print Powders
- Invisible UV Markings
- Arson Debris (hydrocarbons)
- Cyanoacrylate enhancements (Ardrox)

## UV ForensiTorch

The new and improved UV ForensiTorch™ features a single, very high-intensity 1-watt, longwave UV LED which provides +50,000 hours of life under normal use. Whether the search is conducted in subdued light or broad daylight, the ForensiTorch™ is the perfect choice in the preliminary examination and location of physical evidence. Light-weight but built for rugged use, the unit is powered by a rechargeable battery (charger & battery included).



**No. UVFT100A**

**UV ForensiTorch**

## AC/DC Field and Lab Lamp

This ultraviolet lamp comes with a longwave/high-intensity option and can be used in the field or the in lab.

**Often bought with:**  
Replacement Bulb (6762)



**No. 762ADC**

**AC/DC Field and Lab Lamp, 110V AC**

**No. 762ADC220**

**AC/DC Field and Lab Lamp, 220V AC**

**Pricing information:**  
For current pricing visit  
[www.sirchie.com](http://www.sirchie.com), or  
call (800) 356-7311



### 6-Watt Longwave UV Forensic Light Source

Investigators can take these lights anywhere! They're light, compact, built for rugged use, and can operate by battery.

Often bought with:  
Replacement Bulb  
(UV9692)



**No. UVP600**

**6-watt Longwave (365nm) Forensic Light**

### The TigerUV

This light source gives investigators a wide beam of UV light to scan large areas for evidence. TigerUV's wavelength is 365nm. Available in 110v and 220v.



Often bought with:  
Replacement Bulb for 110V  
(790UVB), Replacement Bulb for  
220V (790UVB220), Carrying Case  
(790UVC)



**No. 790UV**

**TigerUV Light, 110V AC**

**No. 790UV220**

**TigerUV Light, 220V AC**

### 6-watt Dual UV Wavelength Forensic Light

This dual band, AC/DC powered ultraviolet light source features two 6-watt lights—one shortwave (254nm) and one longwave (365nm), giving the unit the versatility for use in many situations where an alternate light source is needed. Protect your eyes at all times from shortwave radiation using one of our shortwave eye protection products.



Often bought with:  
Longwave Replacement Bulb (UV9692),  
Shortwave Replacement Bulb (SW969B), UV  
Protective Spectacles (797UV)



**No. UVP120DW**

**6-watt Dual UV Wavelength Forensic Light**

### AC/DC Tiger Twin UV Light Source

Ideal for lab and field use, this UV light source can be used for shortwave (254nm) or longwave (365nm) light. Panel lights at the back indicate which wavelength is selected.



Often bought with:  
4-watt Longwave Replacement Bulb (6762),  
4-watt Shortwave Replacement Bulb (6247),  
UV Protective Spectacles (797UV)



**No. 782ADC**

**AC/DC Tiger Twin UV Light, 110V AC**

**No. 782ADC220**

**AC/DC Tiger Twin UV Light, 220V AC**



**Often Bought Together:**  
Indicates items often  
purchased in conjunction with  
other items.

## Longwave and Shortwave UV Forensic Lights

These light sources feature a dual-section longwave (365nm) or shortwave (254 nm) light source capable of swinging 180 degrees for many situations. It's compact and light-weight for transport and storage. Eye and skin protection must be worn when using a shortwave UV light source.



**Often bought with:**  
9-watt Replacement Bulb for Longwave (11954),  
13-watt Replacement Bulb for Shortwave (SKSUV13B),  
UV Protective Spectacles (797UV)



**No. UVP900** **9-watt Longwave (365nm) Forensic Light**  
**No. SKSUV13** **13-watt Shortwave (254nm) Forensic Light**

## Sirchie UV 6-Watt Shortwave Forensic Light

These units are light and compact and built for rugged use, so you can take them anywhere. The light source is a 254nm wavelength with a highly efficient electronic ballast for constant output. Powered by batteries or 110V/220V.



**Often bought with:**  
Replacement Bulb (SW969B),  
UV Protective Spectacles (797UV)



**No. UVP600ST** **6-watt Shortwave (254nm) Forensic Light**

## Barrier Filter Glasses & Goggles

Investigators should use barrier filter glasses and goggles to view evidence illuminated with forensic alternate light sources. We offer a variety of goggles and glasses to fit your needs:

### Bluemaxx Barrier Filter Glasses/Goggles.

Convenient viewing for crime scene searches and photography when using BLUEMAXX products. Goggles can be worn over corrective eyewear.



**No. BMS300** **Orange Barrier Filter Goggles w/case**  
**No. BMS400** **Orange Barrier Filter Glasses**

**Sport Frame Barrier Filter Glasses.** These glasses feature sport frames for comfort.



**No. BFR10** **Sport Frame Barrier Filter Glasses (Red)**  
**No. BFN10** **Sport Frame Barrier Filter Glasses (Orange)**  
**No. BFY10** **Sport Frame Barrier Filter Glasses (Yellow)**

**Barrier Filter Glasses.** These are designed to fit over any corrective eyewear.



**No. BFR20** **Barrier Filter Glasses (Red)**  
**No. BFN20** **Barrier Filter Glasses (Orange)**  
**No. BFY20** **Barrier Filter Glasses (Yellow)**

**Barrier Filter Goggles with Elastic Strap.** These goggles have the added comfort of an elastic strap to hold them in place. Can fit over corrective eyewear.



**No. BFR30** **Barrier Filter Goggles w/strap (Red)**  
**No. BFN30** **Barrier Filter Goggles w/strap (Orange)**  
**No. BFY30** **Barrier Filter Goggles w/strap (Yellow)**



**Pricing information:**  
For current pricing visit  
[www.sirchie.com](http://www.sirchie.com), or  
call (800) 356-7311



## Camera Lens Barrier Filters

These filters are used in conjunction with alternate light sources to enhance items of interest and eliminate backgrounds when shooting photos of evidence. Filters are available in three colors (Orange, Yellow, Red) and all the most popular lens thread sizes. Also available are filter kits that include one filter of each color in your choice of thread size.

<b>No. CFY49</b>	<b>Camera Lens Barrier Filter, Yellow, 49mm</b>
<b>No. CFY52</b>	<b>Yellow, 52mm</b>
<b>No. CFY55</b>	<b>Yellow, 55mm</b>
<b>No. CFY58</b>	<b>Yellow, 58mm</b>
<b>No. CFY62</b>	<b>Yellow, 62mm</b>
<b>No. CFY67</b>	<b>Yellow, 67mm</b>
<b>No. CFY72</b>	<b>Yellow, 72mm</b>
<b>No. CFY77</b>	<b>Yellow, 77mm</b>
<b>No. CFN49</b>	<b>Camera Lens Barrier Filter, Orange, 49mm</b>
<b>No. CFN52</b>	<b>Orange, 52mm</b>
<b>No. CFN55</b>	<b>Orange, 55mm</b>
<b>No. CFN58</b>	<b>Orange, 58mm</b>
<b>No. CFN62</b>	<b>Orange, 62mm</b>
<b>No. CFN67</b>	<b>Orange, 67mm</b>
<b>No. CFN72</b>	<b>Orange, 72mm</b>
<b>No. CFN77</b>	<b>Orange, 77mm</b>



<b>No. CFR49</b>	<b>Camera Lens Barrier Filter, Red, 49mm</b>
<b>No. CFR52</b>	<b>Red, 52mm</b>
<b>No. CFR55</b>	<b>Red, 55mm</b>
<b>No. CFR58</b>	<b>Red, 58mm</b>
<b>No. CFR62</b>	<b>Red, 62mm</b>
<b>No. CFR67</b>	<b>Red, 67mm</b>
<b>No. CFR72</b>	<b>Red, 72mm</b>
<b>No. CFR77</b>	<b>Red, 77mm</b>
<b>No. AFK49</b>	<b>Lens Filter Kit (1 ea. Yellow, Orange, Red), 49mm</b>
<b>No. AFK52</b>	<b>(1 ea. Yellow, Orange, Red), 52mm</b>
<b>No. AFK55</b>	<b>(1 ea. Yellow, Orange, Red), 55mm</b>
<b>No. AFK58</b>	<b>(1 ea. Yellow, Orange, Red), 58mm</b>
<b>No. AFK62</b>	<b>(1 ea. Yellow, Orange, Red), 62mm</b>
<b>No. AFK67</b>	<b>(1 ea. Yellow, Orange, Red), 67mm</b>
<b>No. AFK72</b>	<b>(1 ea. Yellow, Orange, Red), 72mm</b>
<b>No. AFK77</b>	<b>(1 ea. Yellow, Orange, Red), 77mm</b>

## UV Protection Products

Shortwave UV light sources emit harmful radiation. Use of these devices requires proper eye and skin protection. It's important for investigators to use one of the products below.

### UV Protective Spectacles

Top and side shield design provides full protection and polycarbonate construction is impact-resistant.

**No. 797GV**

**UV Protective Spectacles**



### UV Protective Goggles

Has a lightweight design with a flexible rubber trim that will fit comfortably over the face, even with prescription glasses.

**No. 798GV**

**UV Protective Goggles**



### UV Protective Face Shield

Protect the entire face while eliminating "blue haze" interference from long wavelengths.



**No. 799UV**

**UV Protective Face Shield**

### UV Protective Face Shield with Shroud

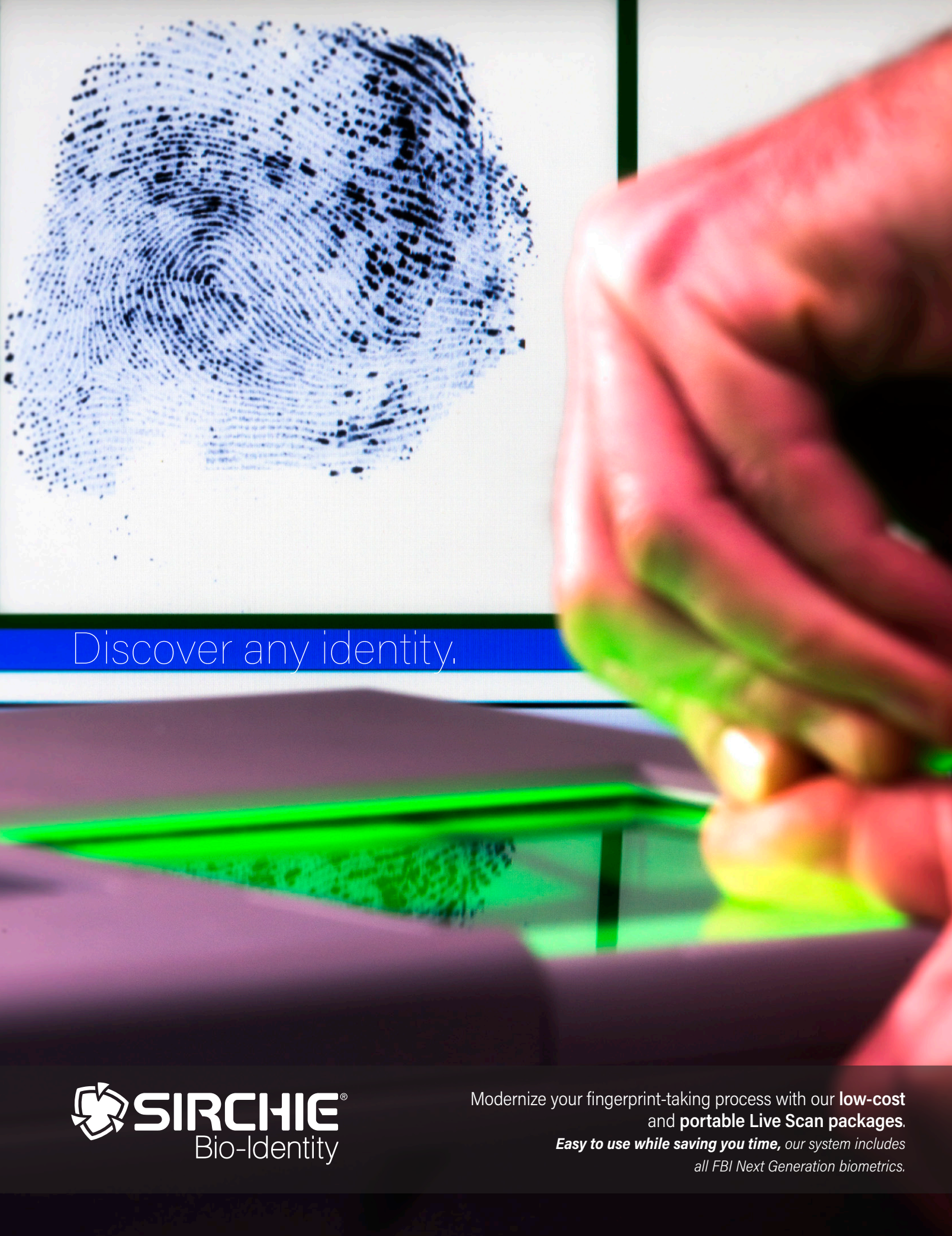
Offers complete head and neck UV protection and designed specifically for high-intensity shortwave UV sources.



**No. 798GVH**

**UV Protective Face Shield w/Shroud**





Discover any identity.



Modernize your fingerprint-taking process with our **low-cost**  
and **portable Live Scan packages**.

*Easy to use while saving you time, our system includes  
all FBI Next Generation biometrics.*