

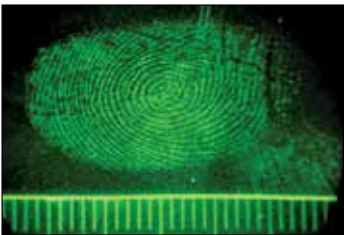


RUVIS Systems

Reflected Ultraviolet Imaging

Detect latent fingerprints without the use of powders or chemicals by using Reflected Ultraviolet Imaging Systems (RUVIS) at the scene or in the lab. RUVIS is most effective on smooth, non-porous surfaces (flooring, walls, countertops, tables) and on multi-colored surfaces like magazine covers.

How it works: Reflected Ultraviolet Imaging Systems (RUVIS) use shortwave UV light. This light is reflected or absorbed by most surfaces but with the residues in fingerprints, the UV light is reflected and scattered. Using a special lens and a UV filter, the system converts the UV wavelength to visible light, revealing the latent print.



Use RUVIS imaging systems to help:

- Find fingerprints and footwear impressions on smooth, non-porous surfaces
- Enhance the ability to see cyanoacrylate fumed prints without further enhancement
- Detect other evidence you may not have otherwise seen



RUVIS Pro Tips

Smudges and smears are commonplace at the crime scene and are often passed over by evidence technicians due to lack of identifiable ridge detail. However, deposits and residues can still be useful if they contain the perpetrator's DNA profile. There have been a number of cases when this has helped to identify evidence. For evidence technicians, the problem is that you have to locate these potentially flawed latent prints. The KrimeSite™ Imager can find these untreated latent fingerprints on many smooth, non-porous surfaces.

Please keep in mind that DNA will degrade if DNA is overexposed to shortwave UV light for an extended period of time. The degradation depends on many factors, including:

- The intensity of the light source being used
- The distance that the light source is from the DNA
- The amount of exposure time
- The type of stain or residue

If you're using the Imager to search for latent prints and see what may be biological stains or other sources of trace DNA, we highly recommend you follow the procedure below:

- Turn OFF Shortwave UV light source
- Swab the suspected area for potential trace DNA
- Cover suspected area with UV-blocking material to shield potential trace DNA from shortwave UV light source
- Finish conducting your search for untreated latent fingerprints



Often Bought Together:
Indicates items often purchased in conjunction with other items.

KrimeSite™ Direct View Kit

From the redesigned lightweight body fashioned from a single piece of extruded aluminum, to the superior 60mm 4 element all-quartz lens with dual filter slide assembly—the KSS60 sets a new standard for crime scene search capability. The 60mm UV lens is our very finest, which requires no add-on lens adapters for close-up and distance viewing. Because of this exceptional lens and filter combination, close-up, distance viewing and photography can be accomplished without ever changing the mechanical configuration of the device. The Direct View Kit is supplied with everything you need to search a crime scene for latent prints on non-porous surfaces. Kit comes in a Pelican® Case.



KSS60 Specifications:

- KSS100b 60mm UV lens**
- Focal Length: 60mm
 - Aperture: f/3.5 - f/32
 - Lens Construction: 4 elements, all quartz glass
 - Spectral Waveband: Min. 230nm
 - Geometric Distortion: <0.1% in corners
 - Vignetting: < 22% in corners
- Body Construction, precision machined:**
- Material: Extruded Aluminum, 6061-T6 alloy
 - Finish: Black Anodized, Vinyl covered (selected areas)
 - Objective Mount: C-mount
 - Configurable Steady Rest for safe instrument support during periods of non-use
 - Removable contoured foam covered pistol grip
 - 6" wrist lanyard, removable
 - Eyepiece, w/removable rubber eyecup
 - Adjustable focus
 - 25mm eye relief
- Laser Pointer:**
- Wavelength: 650 nm
 - Aperture Output Power: <5.0 mW
 - Operating Voltage: 4.5V (3x LR44 coin batteries)
 - Control: Push-button; Momentary ON/off
- Battery:** Lithium, 3.0V DC, type CR123
- Control Panel:**
- Toggle Switch with built-in power light indicator
 - Visual Indicator: Green LED, Image Intensifier ON
 - Battery Access: Threaded Cap, Spring loaded
- Image Intensifier Tube:**
- Gen II, Double Proximity focused, 175mm
 - Built-in Over Brightness Protection (Tube automatically limits gain from bright light sources)
 - >/=571 Lp/mm typical, with built-in over-brightness protection circuitry
 - P22 Phosphor
 - S20 Photocathode
 - Input Window: Quartz
 - Image Inversion: None

The KrimeSite Imager can be configured for use several ways



1. Hand-held with Lanyard



2. Pistol Grip



3. Steady Rest Attachment



KSS60 Contents:

- 1- KRIMESITE™ IMAGER w/KSS100b 60mm UV Lens
- 1- LTF102 Ballistic Laser Pointer w/batteries
- 1- Dual Filter Slide Assembly (Luminol/Visible and UV)
- 1- CR123 Lithium Battery
- 12- AA Alkaline Batteries
- 1- KRIMESITE™ IMAGER Steady Rest w/Removable Pistol Grip
- 1- 58mm Camera Adapter
- 1- KSS9200 SIRCHPOD® Copy Stand
- 1- CUV100TS UV Mini Light Source (4-watt 254nm shortwave, battery operated)
- 1- UVP600ST UV Panther AC/DC Shortwave Light, 254nm w/ 90-264V AC Multi-Plug Transformer
- 2- 797GV UV Protection Spectacles
- 1- EPS30KS Photo Evidence Scales (white on black, 10-pk)
- 1- KSS684 Pkg. Arrow Designators (96/pk)
- 1- Operator's Manual
- 1- Pelican® 1550 IP67 rated Carry Case, Custom-fitted, moisture resistant, 20.66" (52.5cm) L x 17.20" (43.7cm) W x 8.40" (21.3cm) D

No. KSS60

KrimeSite™ Direct View Kit

Pricing Information:
For current pricing visit
www.sirchie.com, or
call 800.356.7311

Often Bought Together:
Indicates items often
purchased in conjunction
with other items.

BTS100 Features:

- It has a built-in precision laser-engraved sliding photo evidence scale
- Shortwave UV lamps are attached to the fully adjustable support/swing arms so investigators can get the angle needed
- The talon stabilizer was created for the KrimeSite™ Imager and it can be used as a rest spot for the Imager when not in use
- For close-up photography, tripods can become cumbersome. The stabilizer eliminates this with sturdy support on many surfaces
- If a standard tripod is needed, the stabilizer can be mounted on it for use

BTS100 Specifications:

- Black powder coated steel legs with integral 4 point surface contact
- (2) 4-watt battery operated UV light sources (254nm) each using flexible cables
- Single point quick-connect, black anodized aluminum body mount
- (2) Precision Laser Engraved Sliding Photo Evidence Scales, English and metric
- Dimensions (max. overall): 12.5"H x 12"W x 7.75"D (31.7cm x 30.5cm x 19.7cm)
- Weight: 2.2 lbs. (998g)

KSS60TALON Contents:

- 1- KSS60 KRIMESITE™ IMAGER w/KSS100b 60mm UV lens; Adjustable Focus Eyepiece w/Rubber eyecup; Dual Filter Slide Assembly (Luminol/Visible and UV); Gen II Image Intensifier; Laser Pointer w/batteries; 6" (15.2cm) Wrist Lanyard
- 1- CR123 Lithium Battery
- 12- AA Alkaline Batteries
- 1- KRIMESITE™ IMAGER Steady Rest w/Removable Pistol Grip
- 1- BTS100 Black Talon Stabilizer (U.S. Patent No. 7,050,715) w/2 CUV100TS 4-watt battery operated UV Lamps (254nm)
- 2- Precision Laser Engraved Scales, English and metric
- 1- UVP600ST UV Panther AC/DC Shortwave Light, 254nm
- 1- KSS9200 SIRCHPOD® Copy Stand
- 1- 58mm Camera Adapter
- 2- 797GV UV Protective Spectacles
- 1- EPS30KS Photo Scales, 6" (15cm) white on black, 10 pk.
- 1- KSS684 Pkg. Arrow Designators (96/pk)
- 1- Operator's Manual
- 1- Pelican® 1550 IP67 rated Carry Case, Custom-fitted, moisture resistant, 20.66" (52.5cm) L x 17.20" (43.7cm) W x 8.40" (21.3cm) D

KrimeSite™ Direct View Kit with Black Talon Stabilizer

The Black Talon is comprised of a lightweight support structure engineered to provide the correct lens-to-subject distance for viewing and photography. The built-in precision laser-engraved sliding photo evidence scale is easily positioned into or out of the field-of-view, allowing the photograph to be scaled 1-to-1 at a later time, as required. Dual 4-watt shortwave UV lamps (included) are attached to the fully adjustable support/swing arms, providing the necessary angle of incidence required for maximum contrast. Kit comes in a Pelican® Case.

Easy Attachment to The Imager

The BTS100 Black Talon Stabilizer has been optimized to easily receive the KRIMESITE™ IMAGER. Attachment is accomplished by removing the pistol grip, properly positioning the Talon, and reattaching the grip to the Imager.

System Sets Up in Seconds

Photographic tripods are necessary when recording evidence at the scene, but when close-up photography is required, tripods are cumbersome and inefficient. The BTS100 eliminates this hassle by providing sturdy support when working with vertical or horizontal surfaces/evidence. Also, when longer shots requiring a standard photo tripod are needed, the entire assembly may be quickly mounted to a tripod. The only disassembly required is to unscrew the stud at the bottom of the pistol grip and attach the tripod mount. Assemble the Imager and the Talon when you arrive at the scene and disassemble when you're ready to leave.



No. KSS60TALON

No. BTS100

KrimeSite™ Direct View Kit w/Black Talon Stabilizer

Black Talon Stabilizer (US Patent 7,050,715)

Scan-n-Find™ Pocket Imager Kit

The Scan-n-Find™ UV Imaging System simplifies the search for latent evidence that could be easily overlooked. With a variable focus wide-angle 30mm wide-field UV lens, it is capable of scanning a large area in a short amount of time. The included laser pointer helps with marking evidence once it's located. The Imager's light-weight body is constructed from a single piece of extruded aluminum which features a User-Facing Control Panel. The KSS8997 Pocket Imager uses a high-quality image intensifier tube and the UV filter provides a peak UV transmission at 254nm. Kit comes in a Pelican® Case.



Features:

- With a wide-angle 25mm UV lens, investigators can scan a large area in a short amount of time.
- A laser pointer is included

Note: To photograph close-up fine ridge details, you will need the KrimeSite™ Imager.



No. KSS8900

Scan-n-Find™ Pocket Imager Kit

Scan-n-Find Specifications:

Objective Lens:

- PSS100b-25mm quartz objective lens w/254nm filter
- Aperture: f/2.8 fixed
- Focus Range: ~14" to infinity within the 254nm wavelength band

Eyepiece:

- Removable rubber eyecup
- Adjustable focus
- 25mm eye relief

Image Intensifier Tube:

- Resolution: >/=571 Lp/mm typical, with built-in over-brightness protection circuitry

Laser Pointer:

- Wavelength: 650 nm
- Aperture Output Power: <5.0 mW
- Operating Voltage: 4.5V (3x LR44 coin batteries)
- Control: Push-button; Momentary ON/off

KSS8900 Contents:

- 1- KSS8997 Pocket Imager w/25mm Objective Lens, 254nm Filter, and Laser Pointer w/batteries
- 1- CR123 Lithium Battery
- 12- AA Alkaline Batteries
- 1- UVP600ST UV Panther AC/DC Shortwave Light, 254nm w/ 90-264V AC Multi-Plug Transformer
- 1- 58mm Camera Adapter
- 1- CUV100TS UV Mini Light Source (4-watt, 254nm shortwave, battery operated)
- 2- 797GV UV Protective Spectacles
- 1- KSS684 Pkg. Arrow Designators (96/pk)
- 1- Operator's Manual
- 1- Pelican® 1550 IP67 rated Carry Case, Custom-fitted, moisture resistant, 20.66" (52.5cm) L x 17.20" (43.7cm) W x 8.40" (21.3cm) D

Pricing Information:
For current pricing visit
www.sirchie.com, or
call 800.356.7311

Often Bought Together:
Indicates items often
purchased in conjunction
with other items.

KSS60SNF Features:

- KrimeSite™ Imager can be used in the laboratory and for photographing untreated latent fingerprints
- Scan-n-Find™ is ideal for the crime scene and helps find latent print evidence that is easily overlooked
- Black Talon Stabilizer with included Light Support System allows for hands-free use of both the KrimeSite™ Imager and included Mini Shortwave UV lights
- Three Shortwave UV Lights (one UVP600ST and two CUV100TS) are included for maximum illumination of evidence for search and photography
- Two sets of UV Protective Spectacles that can fit over glasses provide eye protection from harmful shortwave UV radiation
- Camera adapters are included to attach the KrimeSite™ Imager to digital cameras for photography of evidence
- All batteries necessary for operation are included with kit

KSS60SNF Contents:

- 1- KRIMESITE™ IMAGER w/KSS100b 60mm UV Lens, 254nm Filter
- 1- KSS8997 Pocket Imager w/25mm Objective Lens, 254nm Filter
- 2- LTF102 Ballistic Laser Pointer w/batteries
- 1- Dual Filter Slide Assembly (Luminol/Visible and UV)
- 2- CR123 Lithium Battery
- 16- AA Alkaline Batteries
- 1- BTS100 Black Talon Stabilizer (U.S. Patent No. 7,050,715) w/2 CUV100TS 4-watt battery operated UV Lamps (254nm)
- 1- KRIMESITE™ IMAGER Steady Rest w/Removable Pistol Grip
- 2- 58mm Camera Adapter
- 1- KSS9200 SIRCHPOD® Copy Stand
- 1- CUV100TS UV Mini Light Source (4-watt 254nm shortwave, battery operated)
- 1- UVP600ST UV Panther AC/DC Shortwave Light, 254nm
- 2- 797GV UV Protection Spectacles
- 1- EPS30KS Photo Evidence Scales (white on black, 10-pk)
- 1- KSS684 Pkg. Arrow Designators (96/pk)
- 1- Operator's Manual
- 1- Pelican® 1600 Carrying Case, Custom-fitted, moisture resistant, 21.51" (56.4cm) L x 16.54" (42cm) W x 7.99" (20.3cm) D

Master RUVIS Kit with Scan-n-Find™

This kit includes both a KrimeSite™ Imager and a Scan-n-Find unit allowing investigators to work efficiently alone or as a team. Use the Scan-n-Find for scanning the full scene to identify areas of interest and the KrimeSite™ to capture images of the print with a mounted digital camera (not included). Our most comprehensive RUVIS kit, the KSS60SNF also includes the patented Black Talon Stabilizer w/Light Support System, SirchPod, three Shortwave UV Lights, eye protection, and rulers. Kit comes in a Pelican® Case.



No. KSS60SNF

Master RUVIS Kit with Scan-n-Find™

Master KrimeSite™ Capture System

Harness the power of RUVIS in the field and in the lab to make your investigations more efficient and find more evidence. Our new Master KrimeSite™ Capture System gives you the flexibility to search for and capture latent fingerprints and footwear at the scene and conduct easy, accurate search and image capture in the lab. Now is the time to add this system to your tool kit.

Already have a RUVIS imager? Our KrimeSite™ Capture Upgrade Kit is the perfect option for you.

Features include:

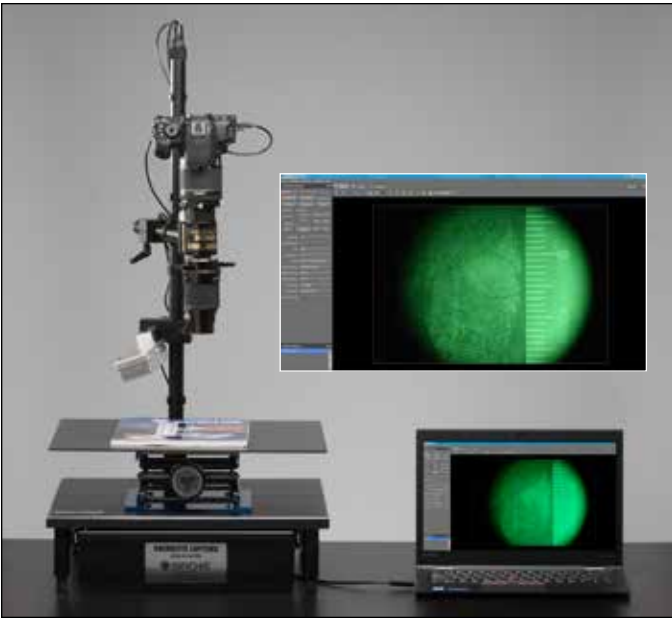
- The specialized stand holds the KrimeSite™ Imager and a camera while you use the included software and laptop to capture photographs.
- User-friendly software allows you to begin looking for latent prints minutes after set-up
- An adjustable platform gives you the flexibility to photograph evidence on objects of any shape or a range of sizes. Additionally, the imager and camera are fixed on a rotating arm of the stand so you can take photos of large objects.
- A Shortwave UV light mounted on a flexible arm lets you operate hands-free so you can focus on the image capture
- Images can be captured in RAW and JPG formats (RAW is recommended for evidence photography)



System is available with or without a KrimeSite™ Imager.



Evidence Platform can be adjusted to ensure proper framing of your evidence.



Control all camera settings including aperture, ISO, and exposure while viewing a live image with the included user-friendly software.



Make precise adjustments to the position of both the KrimeSite™ Imager and the included Shortwave UV light.



A handy drawer is included for storage of parts & accessories.

KSC1000N Master KrimeSite™ Capture Kit

(Nikon) Includes stand and all auxiliaries, KSS1000 RUVIS, Nikon D5600 with 40mm Macro lens, and Lenovo Thinkpad with software installed.

KSC1000UN KrimeSite™ Capture Upgrade Kit

Includes stand and all auxiliaries, Nikon D5600 with 40mm Macro lens, and Lenovo Thinkpad with software loaded. This is for existing KrimeSite™ customers.

No. KSC1000N	Master KrimeSite™ Capture Kit w/KrimeSite™ Imager, Stand, Laptop & Software, 110V AC
No. KSC1000N220	Master KrimeSite™ Capture Kit w/KrimeSite™ Imager, Stand, Laptop & Software, 220V AC
No. KSC1000UN	KrimeSite™ Capture Upgrade Kit w/Stand, Laptop & Software, 110V AC
No. KSC1000UN220	KrimeSite™ Capture Upgrade Kit w/Stand, Laptop & Software, 220V AC

Pricing Information:
For current pricing visit
www.sirchie.com, or
call 800.356.7311

Often Bought Together:
Indicates items often
purchased in conjunction
with other items.

Forensic Shortwave UV Light Sources

RUVIS Companion Laboratory Illuminator

Portable and easily used with a 180 degree swinging head to accommodate many situations, this is an easy-to use shortwave light (254nm) for investigators.

SKSUV13 Specifications:

- Construction: Rugged ABS plastic
- UV Lamp: 13-watt, 254nm, germicidal
- Swinging Lamp Head: 180 degrees
- Internal ON/OFF Switch: lamp illuminates when head is raised
- Power: 110V AC
- Dimensions: 10.5" x 3.25" x 3.4"
- Weight: 2.3 lbs



No. SKSUV13	RUVIS Companion Laboratory Illuminator
No. SKSUV13B	13-Watt 254nm UV Replacement Bulb

Sirchie 6-watt Shortwave UV Forensic Light Source

These 6-watt, shortwave UV (254nm) lights are constructed of vinyl-clad aluminum with a brushed steel cover. Straps are mounted on both sides of the unit for left or right-handed use. An AC Adapter is provided for 110V/220V operation, or for more portability, the light can be powered by 8-AA alkaline batteries (included). A ¼" threaded tripod mount on the bottom of the unit enables hands-free use.



UVP600ST Specifications:

- Case Dimensions: 2.75"W x 9.75"H x 4"D (7cm x 24.8cm x 10.2cm)
- Construction: Vinyl-clad aluminum, black
- Front Housing: Steel w/brushed nickel finish
- Shortwave Bulbs: UV-C germicidal type, 6-watt, 254nm peak wavelength
- Power Source: 8-AA alkaline (included) or 110V/220V AC
- Switch: Rocker (ON/OFF)

No. UVP600ST	6-watt Shortwave UV Light
No. SW969B	6-watt Shortwave UV Replacement Bulb

Shortwave UV Mini Light Source

Specifically designed to use with the Krimesite Imager, investigators can use this light source as a fully portable, battery-operated light source for field and lab use. This is perfect for tight spaces or for close-up examination.



CUV100TS Specifications:

- Dimensions: 6.25"H x 2"W x .75"D (15.9cm x 5.1cm x 1.9cm)
- Weight w/batteries: 8.9 oz. (252g)
- Construction: Rugged ABS plastic
- Shield Guard: Brushed Nickeloid
- Peak Wavelength: 254nm
- Bulb: Shortwave UV-C germicidal type (G4T5), 4-watt
- Power Switch: Slide ON/OFF
- Power Source: 4 "AA" Alkaline Batteries, 1.5 volts (included)

No. CUV100TS	Shortwave UV Mini Light Source
No. 6247	4-Watt 254nm Replacement Bulb

UV Protection Products

RUVIS technology uses Shortwave UV light sources and emits harmful radiation. Use of these devices requires proper eye and skin protection. It's important for investigators to use one of the products below or something similar.

UV Protective Spectacles

Top and side shield design provides full protection and the polycarbonate construction is impact-resistant.



No. 797GV	UV Protective Spectacles
-----------	--------------------------

UV Protective Goggles

Constructed of specially formulated plastic which blocks UV transmission over all UV wavelengths and provides optimum contrast in viewing and lessened eye fatigue. Has a lightweight design with a flexible rubber trim that will fit comfortably over the face, even with prescription glasses.



No. 798GV	UV Protective Goggles
-----------	-----------------------

UV Protective Face Shield

Specially designed to protect the entire face from hazardous shortwave UV light while completely eliminating "blue haze" interference normally associated with long wavelengths. Dimensions: 8.25"H x 17" dia. (20.9cm x 43.2cm).



No. 799UV	UV Protective Face Shield
-----------	---------------------------

UV Protective Face Shield with Shroud

This shield offers the same shortwave UV-blocking properties as the 799UV with the added protection of a dense cotton-weave shroud that is attached with hook & loop fasteners for easy removal.



No. 798GVH	UV Protective Face Shield w/Shroud
------------	------------------------------------

KrimeSite™ Accessories

Complete your KrimeSite™ suite with these accessories.

SirchPod Copy Stand

The SirchPod was specifically designed for use with our KrimeSite™ Imager to allow for hands-free operation and a rock-solid platform for evidence photography. Features three telescoping legs, and an adjustable mounting head that tilts a full 180° with the KrimeSite™ Imager mounted.



No. KSS9200	SirchPod Copy Stand
-------------	---------------------

Professional Duty Tripod

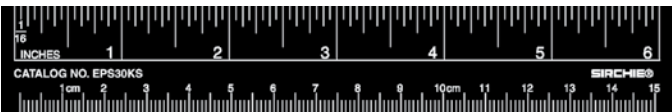
Free your hands to continue your crime scene search with our Imager. This tripod is an excellent companion to our KrimeSite™ Kits, and mounts with our UVP600ST.



No. BM6009	Professional Tripod
------------	---------------------

Photo Evidence Scales

These scales are printed black with white markings for placement near RUVIS latent fingerprint images for scaled photography. These white markings appear vividly bright when photographed using our KrimeSite™ Imager in conjunction with shortwave UV light. Scales have English and metric measure.



No. EPS30KS	Photo Evidence Scales, 10 each
-------------	--------------------------------

Arrow Designators

Use arrow designators in conjunction with the KrimeSite™ Imager mounted laser pointer for temporarily indicating latent fingerprint locations or selected target areas. Sold in packs of 100.



No. KSS684	Arrow Designators, 96 each
------------	----------------------------