
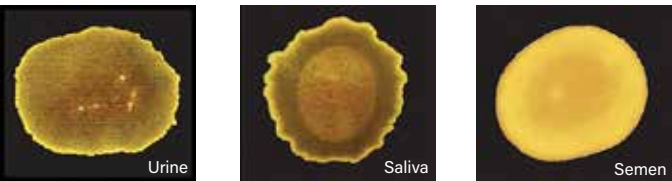




Alternate Light Sources

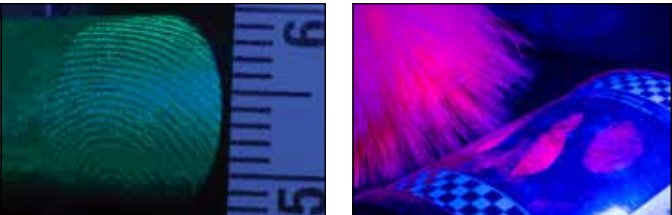
 Alternate Light Sources (ALS) can be used to reveal and photograph many forms of forensic evidence at the crime scene and in the lab. Physiological fluids (semen, urine, and saliva) can be found through their natural fluorescent properties utilizing UV light (365nm) or a blue light (455nm) viewed through an orange filter. Items such as bone fragments and teeth exposed with blue light (455nm) through the use of an orange barrier filter can be separated from the background for easy recovery. When using chemical development such as Ardrox, DFO, Cyanoacrylate with Basic Yellow, or dusting with fluorescent powders, blue (450nm-470nm) light with the appropriate barrier filter allows the investigator to capture the true evidence with little interference from lighting, background, or other masking factors. Even white light used at an oblique angle can help the investigator find and photograph hidden evidence such as dust prints on floors and indented writing on paper. Sirchie's ALS offering spans the usable light spectrum as well as every budget.



Physiological fluids fluoresce under longwave UV (365nm) and Blue 455nm light with orange filter.



Searching an area littered with small stones (left). Bone fragments are revealed using the 395nm UV Light (middle). Greater contrast with background using Blue 455nm light with orange filter (right).



Longwave 365nm UV light used to photograph fingerprints developed with Cyanoacrylate and Ardrox Dye (left), and used to search for and develop fingerprints with fluorescent powder (right).



Oblique White light used to reveal Dust Prints on a floor (left) and indented writing on paper (right).



Often Bought Together:
Indicates items often purchased in conjunction with other items.

megaMAXX ALS System

The megaMAXX™ System is designed to assist the investigator at the crime scene or in the lab. The kit consists of handheld, machined-aluminum, and self-contained light sources—each operating at or very near the individual light frequencies indicated on each light (365-625nm). A white megaMAXX™ light source is included to facilitate general crime scene searches.

megaMAXX™ Light Diffuser

LEDs are directional, and therefore are very intense. For oblique viewing and photography where a softer light is required, SIRCHIE's engineered diffuser will meet the need.

ForensiTorch™ UV Light

The ForensiTORCH™ UV Light (365nm) should always be used in the preliminary examination and location of physical evidence. It features a 1-watt UV LED and operates from one 18650 3.7V lithium ion battery.

megaMAXX™ Tripod

There are many times that you will need to have both hands free to process an area or photograph an item of forensic interest. With this in mind, SIRCHIE provides the megaMAXX™ Tripod. This Light Support features a flexible gooseneck extension with a maximum height of 13.5" (34.3cm). This allows for precise positioning of the light over the area being processed and aids in facilitating photographs.



No. MMX300

megaMAXX ALS System

ForensiTorch™ UV Light Specifications:

- Dimensions: 6.0"L x 1.4" dia (15.25cm x 3.6cm)
- Weight: 0.31lb. (143g) w/battery
- Construction: Black, anodized aluminum
- Battery: 18650 3.7V lithium ion
- TMX200CHG1 battery charger
- LED: One 1-watt longwave (365nm) UV LED
- Switch: Push Button ON/OFF

MMX300 Specifications:

- Visible Light Sources: 455nm, 470nm, 505nm, 530nm, 590nm, 625nm, White
- Dimensions: 5.25" x 1.28" dia. (13.3cm x 3.25cm dia.)
- Weight w/batteries: 3.55 oz. (100.6g)
- Construction: Machined Aluminum
- Switch: Push-button ON/OFF/Momentary
- LED: One 3-watt LED; +50,000 hrs. life
- Batteries: (2) CR123 Lithium

MMX300 Contents:

- 1- UVFT100A ForensiTORCH™ UV Light (365nm) w/ rechargeable battery & charger
- 7- Visible MMX Lights (455nm, 470nm, 505nm, 530nm, 590nm, 625nm, White)
- 1- Light Diffuser
- 1- MMXPOD Light Support Tripod
- 14- CR123 Lithium Batteries
- 1- 797GV UV Protective Spectacles
- 1- FAL208 Yellow Goggles
- 1- FAL207 Red Goggles
- 1- MMX300C Custom-fitted, heavy-duty Attache Case w/pre-cut foam insert, 18" x 13" x 5"



To thwart counterfeiting of US currency, a fluorescent stripe (with printing) is embedded between the layers of paper currency. It isn't visible to the naked eye (above left) but it is with UV (above right).



Searching an area littered with small stones (left). Bone fragments are revealed using the 395nm UV Light (middle). Greater contrast with background using Blue 455nm light with orange filter (right).

Pricing Information:
For current pricing visit
www.sirchie.com, or
call 800.356.7311

Often Bought Together:
Indicates items often
purchased in conjunction
with other items.

megaMAXX Assistant

The megaMAXX™ Assistant with its 2.5X magnifying lens and interchangeable barrier filters (yellow, red and orange), permits close-up examination of a variety of forensic evidence. Simply place the unit over the item or area of interest, engage any one of the seven visible megaMAXX™ lights (MMX300 sold separately) of the required frequency into the rear holder and insert the appropriate barrier filter into the front slot.

Items of forensic interest that can be successfully detected, examined, and compared with this combination include: physiological fluids (urine, semen and saliva); trace evidence (hair, fibers, dust prints, etc.); blood and palmar oils (enhanced with fluorescent powder, dyes, and DFO); and Cyanoacrylate Prints stained with Rhodamine 6G, Ardrox, Basic Yellow, and Rhodamine 6G.



To use, simply select the appropriate barrier filter and slide in the front. Next, select a megaMAXX™ Light Source (not included) and insert in the back of the unit.

MMX203 Specifications:

- Dimensions: 6"W x 7.5"H" x 8.5"D (15.2cm x 19.1cm x 21.6cm)
- Weight w/out filter: 2 lbs. (.92kg)
- Construction: Rugged metal and plastic
- Magnifier: 4" (10.2cm) dia. w/2.5X magnification
- Barrier Filters: 1/8" (3.2mm) Acrylic Stock; Dimensions: 5.25"W x 7"L (13.3cm x 17.8cm)
- Weight: 2.9 lbs. (1.3kg)

No. MMX203	megaMAXX Assistant
------------	--------------------

Tactical Max Forensic Light Kit

The Tactical MAX ALS Light Kit provides all the light needed to conduct an on-scene forensic investigation: white, 365nm UV, and 455nm blue. Newly improved, each handheld forensic light is made of tough anodized aluminum, contains an extremely bright 1-Watt LED, and comes with rechargeable batteries. A rubber diffuser fits securely on each flash light and a flexible tripod can serve as a third hand.



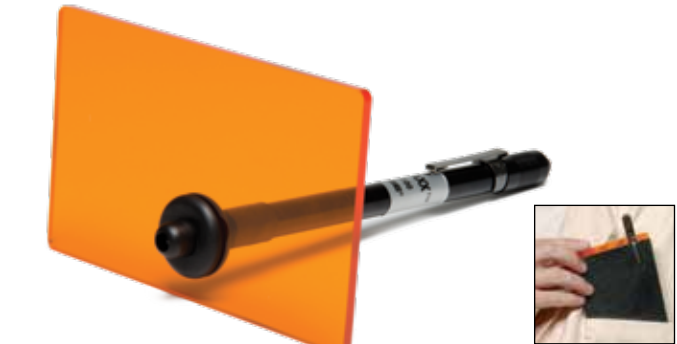
No. TMX200 Contents:

- 1- White 1-Watt LED Forensic Light, black anodized aluminum
- 1- Longwave UV (365nm) 1-Watt LED Forensic Light, black anodized aluminum
- 1- Blue (455nm) 1-Watt LED Forensic Light, black anodized aluminum
- 3- 18650 3.7V Lithium Ion Batteries
- 1- No. TMX200CHG4 Battery Charger
- 1- No. TMXFT1 Tactical MAX Flexible Mini Tripod (ABS Plastic, Stainless Steel) 1.38" (3.5cm) x 1.38" (3.5cm) x 6.88" (17.5cm)
- 1- Diffuser (Acetal, black) 1.44" (3.7cm) x dia. x 1.25" (3.25cm) long
- 1- No. BMS300 Orange barrier filter goggles with case
- 1- Black Nylon Case, 11.75" (29.8cm) x 9.0" (22.9cm) x 2.0" (5.1cm)

No. TMX200	Tactical Max Forensic Light Kit
No. TMXFT1	Flexible Tripod (only)

Micro BLUEMAXX

This small light source produces the perfect amount of illumination for searching small areas. It's the shape of a pen but emits a powerful blue LED light and comes with a barrier filter. The light and filter can fit in a shirt pocket.



BMMB100 Contents:

- 1- BMMB100 Micro BLUEMAXX Light, 0.38" (1.0cm) dia. x 6.25" (15.9cm) length
- 1- Orange Barrier Filter, 2.75" (7.0cm) x 4.5" (11.4cm) x 0.12" (3mm) thick
- 3- AAAA Alkaline Batteries
- 1- Leatherette Case, 6.5" (16.5cm) x 3.25" (8.3cm), 3 oz.

No. BMMB100	Micro BLUEMAXX
-------------	----------------

Mini BLUEMAXX III Kit

Excellent for locating and facilitating photographs of a variety of forensic evidence. This kit features a 455nm LED light with batteries & diffuser, orange barrier filter goggles, and carrying case.



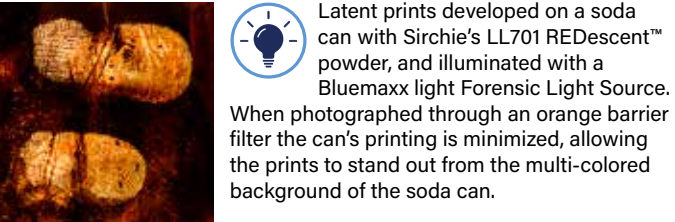
BMK250A Contents:

- 1 - BM250A Mini BLUEMAXX Light (455nm)
- 1- Light Diffuser, 1.44" (3.7cm) dia. x 1.25" (3.3cm) length
- 1- BMS300 Barrier Filter Goggles with Case
- 2 - CR123 Lithium Batteries
- 1- BMK250ACC Black, Copolymer Carrying Case with Molded Foam Inserts, 8.5" x 5.5" x 3.1875", 1.58 lbs

No. BMK250A	Mini BLUEMAXX III Kit
-------------	-----------------------

BLUEMAXX Forensic Light Source

The BM300 BLUEMAXX™ forensic light source is equipped with both finely tuned barrier filter goggles and a excitation filter. This combination allows the investigator to find and enhance forensic evidence. By utilizing a broad filter range (390nm – 520nm), the investigator can locate diverse evidence including physiological fluids and bone fragments. This broad wavelength also excites most fluorescent fingerprint powders allowing for greater contrast for forensic photography. Body is made of machined and anodized aluminium. Uses three (3) standard "D" cell batteries (not included). **Carrying case sold separately.**



BM300 Specifications:

- Bulb Type: Incandescent, 45 lumens
- Reflector: Parabolic, calibrated for 5"-8" spot at 10'
- Beam Pattern: Adjustable
- Length: 12.3"
- Weight with Batteries: 30.2 oz.
- Switch: Recessed, push-button, self-cleaning, 3 position
- Battery: 3 Alkaline "D" Cell (not included)
- Construction: Machined aluminum with knurled design, anodized inside and out
- Battery Contacts: Plated coil spring
- Excitation Filter: All dielectric coating, extremely durable, meets or exceeds MIL-C-675A and MIL-M-13508C

BM300 Components:

- 1- BM320 3 D-Cell Flashlight (batteries not included)
- 1- BM321 Incandescent Bulb
- 1- BMS300 Barrier Filter Goggles
- 1- BMF100B Excitation Filter

No. BM300	BLUEMAXX Forensic Light Source
No. BM300CC	Carrying Case for BM300

Pricing Information:
For current pricing visit
www.sirchie.com, or
call 800.356.7311

Often Bought Together:
Indicates items often
purchased in conjunction
with other items.

BLUEMAXX Rechargeable Forensic Light w/LED Bulb

One of our most popular BLUEMAXX light sources, the BM500LED comes with matched an excitation filter and barrier filter goggles, rechargeable battery, and 110/220V charger. Light features a LED bulb and a high-capacity battery. It is a super-effective, fully self-contained system, requiring no additional light source or filter. Unit is supplied with a battery charger that can be wall-mounted. *Carrying Case sold separately.*



BM500LED Specifications:

- Bulb Type: LED
- Output: 1082 lumens
- Reflector: Parabolic, calibrated for 8"-10" (20.3cm-25.4cm) spot at 10' (3m)
- Beam Pattern: Adjustable cam action with 1/4 turn of head
- Construction: Rugged machined aluminum w/knurled design, anodized inside and out (corrosion, water, and shock resistant)
- Switch: Recessed, push-button, self-cleaning, 3 position
- Battery: LiFePO₄ rechargeable
- Length: 10.687" (27.14cm)
- Weight w/Battery: 15.2 oz. (431g)
- Excitation Filter: All-dielectric coating, extremely durable when exposed to humidity, heat, thermal shock and abrasion, meets or exceeds MIL-C-675A and MIL-M-13508C specifications
- Barrier Filter: Acrylic, selected for its spectral characteristics/durability: Dimensions: 4.75" x 7.5" (12 cm x 19cm)

Charger Cradle:

- Construction: Black ABS plastic "cradle/clamp" type
- Power Source: Universal 12-14V DC
- Charge Contact: 360° positive contact
- Charging Indicator: Red LED
- Charge Rate: 2500 millamps
- Runtime on full charge: Hi (3.25 hrs); Low (18 hrs); Eco (79 hrs)

Converter:

- Input: Universal AC voltage: 120-240VAC, 50/60 Hz

BM500LED Components:

- 1- BM520 Rechargeable Flashlight
- 1- LED Bulb
- 1- BM522 Charger Cradle
- 1- BM523 Converter, 110V/220V
- 1- BM525 LiFePO₄ Battery Pack
- 1- BMS300 Barrier Filter Goggles
- 1- BMF100R Excitation Filter

No. BM500LED	BLUEMAXX Rechargeable Forensic Light w/LED Bulb
No. BM500CC	Carrying Case for BM500

BLUEMAXX Accessories

The two key components for the BLUEMAXX forensic lights are Excitation filters and the Barrier Filter. The Excitation filter fits over the light itself. The Barrier filter is used to make the evidence visible to the operator. This combination allows the investigator to find and enhance forensic evidence having excitation bands between 390nm-520nm. Our excitation filters and barrier filters have high durability and superior spectral stability.

Excitation Filters

Excitation filters feature superior spectral stability and physical durability characteristics. They also have hard, all-dielectric coatings which make them extremely durable when exposed to humidity, heat, thermal shock, abrasion and handling. Passband is from 390nm-520nm.



No. BMF100B	Excitation Filter (for Mag-Lite)
No. BMF100R	Excitation Filter (for Rechargeable Mag-Lite)
No. BMF101	Excitation Filter (for Streamlight)

Barrier Filters

These 8" x 8" handheld barrier filters are made of a transparent orange acrylic material selected for its spectral characteristics and durability.



No. BOVS88	Hand-held Barrier Filter (8" x 8")
------------	------------------------------------

BLUEMAXX Amalgam Kit

The BLUEMAXX Amalgam is a multi-purpose, focused beam ALS that permits use as a hand-held, headmounted, or table-mounted forensic light source. The unit features 6 blue LEDs that produce an excitation band of 470nm—ideal for locating many forms of physical evidence. Use the included Orange Barrier Filter Goggles to increase the contrast of items of evidentiary interest from multi-colored or confusing backgrounds. Unit operates on three AA batteries (not included). For processing latent fingerprints with fluorescent powders, step up to our BMA100 BLUEMAXX Amalgam Master Kit.



BMA200 Contents:

- 1- BLUEMAXX™ Amalgam Light w/headband, belt clip, and 3 ea. AA batteries
- 1- BMS300 Orange Barrier Filter Goggles with case
- 1- BMA200CC Molded Carrying Case, Dimensions: 9.6" x 6.5" x 3.5" (24.4cm x 16.5cm x 8.9cm)

No. BMA200	BLUEMAXX Amalgam Kit
------------	----------------------

BLUEMAXX Amalgam Master Kit

The BMA100 kit includes our BLUEMAXX Amalgam alternate light source that's designed to be used as a hand-held, headmounted, or table-mounted forensic light source—operates on three AA batteries (not included). The unit features six blue LEDs that produce an excitation band of 470nm—ideal for locating many forms of physical evidence. Orange barrier filter goggles, and a variety of products for the development of latent fingerprints with fluorescent powders (both regular and magnetic)are also included. This kit provides everything the crime scene investigator needs to develop and visualize fingerprints on confusing or multi-colored backgrounds.



BMA100 Contents:

- 1- BLUEMAXX™ Amalgam Light with headband, belt clip, and 3 ea. AA batteries
- 1- BMS300 Orange Barrier Filter Goggles with Case
- 1- FAC401 FACII Brush w/FAC4011 REDESCENT™ Powder
- 1- 125L Standard Magnetic Applicator
- 1- LL601 REDCHARGE™ Magnetic Powder
- 1- LL602 ORANGECHARGE™ Magnetic Powder
- 1- LL605 YELLOWCHARGE™ Magnetic Powder
- 1- 123RWB WHOPPING Marabou Feather Duster
- 1- Molded Carrying Case, Dimensions: 12.12" x 7.25" x 5.5" (30.8cm x 18.4cm x 14cm)

No. BMA100	BLUEMAXX Amalgam Master Kit
------------	-----------------------------

Pricing Information:
For current pricing visit
www.sirchie.com, or
call 800.356.7311

Often Bought Together:
Indicates items often
purchased in conjunction
with other items.

BLUEMAXX Patrol Kit

This kit offers the basics in finding physiological fluids, such as semen, saliva, and urine and locating and lifting latent print evidence. Investigators should have this kit to find invisible evidence and collect latent prints with fluorescent powders. Choose between kit versions that include our regular D-cell BLUEMAXX light (BM300) or the rechargeable version (BM500LED).



No. BMK700 pictured

BMK700/BMK705 Contents:

- 1- BM300 BLUEMAXX™ Forensic Light Source (w/BMS300 Barrier Filter Goggles)—runs on 3-D cell batteries (not included) **(BMK700 kit only)**
- 1- BM500LED BLUEMAXX™ Rechargeable Forensic Light Source w/battery & charger (w/BMS300 Barrier Filter Goggles) **(BMK705 kit only)**
- 1- LL701 REDescent™ Fluorescent Powder, 2 oz. (59ml)
- 1- LL703 GREENescent™ Fluorescent Powder, 2 oz. (59ml)
- 2- 123LB Black Marabou Feather Dusters
- 1- 144L2 Transparent Lifting Tape, 2" x 360" (51cm x 10.97m)
- 1- 144L4 Transparent Lifting Tape, 4" x 360" (10.2cm x 10.97m)
- 10- FC34311 Reversible Backing Cards
- 1- BMK7001 Copolymer Carrying Case, Dimensions: 16.38" x 8.63" x 7.0" (41.6cm x 21.9cm x 17.8cm)

No. BMK700	BLUEMAXX Patrol Kit w/BM300 Light
No. BMK705	BLUEMAXX Patrol Kit w/BM500LED Light

BLUEMAXX Latent Specialist Kit

Crime scene search officers can locate, develop, enhance and lift latent fingerprint evidence utilizing a variety of fluorescent powders, both regular and magnetic, with the products supplied in this kit. Fiberglass and feather applicators and a magnetic wand are included. Physiological fluids such as semen, saliva and urine may be located using the BLUEMAXX for subsequent collection and laboratory analysis. Choose between kit versions that include our regular D-cell BLUEMAXX light (BM300) or the rechargeable version (BM500LED).



No. BMK750 pictured

BMK750/BMK755 Contents:

- 1- BM300 BLUEMAXX™ Forensic Light Source (w/BMS300 Barrier Filter Goggles)—runs on 3-D cell batteries (not included) **(BMK750 kit only)**
- 1- BM500LED BLUEMAXX™ Rechargeable Forensic Light Source w/battery & charger (w/BMS300 Barrier Filter Goggles) **(BMK755 kit only)**
- 1- LL701 REDescent™ Fluorescent Powder, 2 oz. (59ml)
- 1- LL703 GREENescent™ Fluorescent Powder, 2 oz. (59ml)
- 1- LL704 SILVER/REDescent™ Fluorescent Powder, 2 oz. (59ml)
- 1- LL705 YELLOWescent™ Fluorescent Powder, 2 oz. (59ml)
- 1- LL601 REDcharge™ Magnetic Powder, 1 oz. (30ml)
- 1- LL603 GREENcharge™ Magnetic Powder, 1 oz. (30ml)
- 2- 122L Fiberglass Latent Print Brushes
- 1- 123LB Black Marabou Feather Duster
- 1- 123LW White Marabou Feather Duster
- 1- 125MD MEGAWAND Magnetic Applicator
- 1- 144L2 Transparent Lifting Tape, 2" x 360" (51cm x 10.97m)
- 1- 144L4 Transparent Lifting Tape, 4" x 360" (10.2cm x 10.97m)
- 20- FC34311 Reversible Backing Cards
- 1- BMK7501 Copolymer Carrying Case, Dimensions: 17.5" x 10.25" x 8.5" (44.4cm x 26cm x 21.6cm)

No. BMK750	BLUEMAXX Latent Specialist Kit w/BM300 Light
No. BMK755	BLUEMAXX Latent Specialist Kit w/BM500LED Light

BLUEMAXX Master Fuming and Evidence Locating Kit

This is Sirchie's top-of-the-line BLUEMAXX kit which offers the investigator the capability of handling a wide variety of crime scene circumstances. It provides the tools for locating physiological fluids (for subsequent collection), locating and developing fingerprints, enhancing the prints with forensic dyes and powders, and lifting and processing the latent prints.

The kit includes a rechargeable BLUEMAXX illumination system along with an expanded inventory of fingerprint developing tools and agents. A practical assortment of both regular and magnetic fluorescent fingerprint powders, and a generous selection of dusting tools for both methods are included.

The kit also features a No. CW100 Cyanowand Kit for the added versatility of on-the-spot glue-fuming at the crime scene. Cyanoacrylate developed prints may be enhanced with fluorescent powder and illuminated with the BLUEMAXX BM500LED for photographing as desired. An ample variety of fingerprint lifting supplies are provided to aid in the final step of collecting crime scene evidence.



No. MFE1000	BLUEMAXX Master Fuming and Evidence Locating Kit
-------------	--

MFE1000 Contents:

- 1- BM500LED BLUEMAXX™ Rechargeable Forensic Light Source w/battery & charger
- 2- 123LB Black Marabou Feather Dusters
- 1- 123LW White Marabou Feather Duster
- 1- 125GM Giga Mag™ Magnetic Wand
- 1- 125MD SEARCH® MEGAWAND™
- 1- 131LT Hinge Lifter, Trans, 2" x 4", 12 ea.
- 1- 131LW Hinge Lifter, White, 2" x 4", 12 ea.
- 1- 144L2 Fingerprint Lifting Tape, Trans, 2" x 360"
- 1- 144L4 Fingerprint Lifting Tape, Trans, 4" x 360"
- 1- 317P Magnifier, 3" (76cm) dia.
- 1- BMS300 Barrier Filter Goggles
- 1- FC343 Reversible Backing Card, 100 ea.
- 1- KCP110 Scissors, 5" (12.7cm)
- 1- KCP115 LED Penlight w/batteries
- 1- KCP116 Pocket Notebook w/Calendar with pen
- 1- LL601 REDcharge™ Magnetic Powder, 1 oz. (30ml)
- 1- LL603 GREENcharge™ Magnetic Powder, 1 oz. (30ml)
- 1- LL605 YELLOWcharge™ Magnetic Powder, 1 oz. (30ml)
- 1- LL701 REDescent™ Latent Powder, 2 oz. (59ml)
- 1- LL705 YELLOWescent™ Latent Powder, 2 oz. (59ml)
- 1- LVS500 Basic Yellow Spray, 500ml
- 1- CW100 Cyanowand™ Fingerprint Kit
- 2- CW200 Cyanowand™ Cartridge Packages, 10 per pkg.
- 2- CW300 Mega-Cartridge Pkgs., 10 per
- 1- KCP152 Accessory Carrying Case, 8.12" x 4.12" x 1.19" (20.6cm x 10.5cm x 3cm)
- 1- MFE1001 Rugged Black Plastic Copolymer Carrying Case; Dimensions: 27.50" x 16" x 7" (69.9cm x 40.6cm x 17.8cm)



Master Kit comes with a complete No. CW100 Cyanowand kit for super glue fuming of latent fingerprints at the crime scene or in the lab.

Pricing Information:
For current pricing visit
www.sirchie.com, or
call 800.356.7311

Often Bought Together:
Indicates items often
purchased in conjunction
with other items.

Longwave Light Sources

Preliminary evidence examination should be conducted with the use of longwave UV light. Longwave light sources are ideal for locating: Physiological Fluids (semen, saliva, urine), Counterfeit Currency, Fluorescent Latent Print Powders, invisible UV Markings, Arson Debris (hydrocarbons), Cyanoacrylate enhancements (Ardrox).

UV ForensiTorch

The new and improved UV ForensiTORCH™ features a single, very high-intensity 1-watt, longwave UV LED which provides +50,000 hours of life under normal use. Whether the search is conducted in subdued light or broad daylight, the ForensiTORCH™ is the perfect choice in the preliminary examination and location of physical evidence. Light-weight but built for rugged use, the unit is powered by a rechargeable battery (charger & battery included).



UVFT100A Specifications:

- Construction: Black, anodized aluminum
- Batteries: One rechargeable battery with TMX200CHG1 battery charger
- LED: One 1-watt longwave (365nm) UV LED; 50,000+ hrs.
- Switch: Push Button ON/OFF
- Carrying case, black HDPE plastic w/handle, 8.5" x 6.0" x 3.0" (21.6cm x 15.2cm x 7.6cm)

No. UVFT100A	UV ForensiTorch
No. TMXFT1	Flexible Tripod

Longwave UV Mini Light Source

This light is ideal for viewing invisible stains, powders, pastes, and bruises that haven't yet appeared on the skin. It operates at a 360nm wavelength. A Mini Light Tripod is available to use with the Longwave UV Mini Light Source.



CUV100T Specifications:

- Dimensions: 2"W x 6.25"H x .75"D (5.1cm x 15.9cm x 1.9cm)
- Weight (w/batteries): 6 oz. (200g)
- Construction: Rugged ABS plastic
- Peak Wavelength: 365nm
- Bulb: Longwave UV-A black light type (F4T5), 4-watt
- Power Switch: Slide Style
- Power Source: 4 "AA" Alkaline Batteries, 1.5 volts (not included)

No. CUV100T	Longwave UV Mini Light
No. 6762	4-watt Replacement Bulb
No. MLT100	Mini Light Tripod

AC/DC Field and Lab Lamp

This 365nm 4-watt longwave UV lab lamp is practical, powerful and compact. This model features an AC/DC connector for convenience both in the lab and at the crime scene. The lamp has dual power levels for normal and high-intensity viewing. Available in 110V or 220V. Batteries are not included.



Includes a 110V or 220V AC power adapter

762ADC Specifications:

- Dimensions: 1.6875"W x 6.875"H x 1.875"D (4.3cm x 17.5cm x 4.8cm)
- Weight (w/batteries): 13.5 oz. (.4kg)
- Construction: Vinyl-clad aluminum, black; Reflector: Steel w/bright nickel finish; End Caps: Steel w/brushed nickel finish
- Peak Wavelength: 365nm
- Bulb: Longwave UV-A black light type, 4-watt
- Power Switch: Push-button, alternate action
- High-Output Switch: Push-button, momentary
- Power Source: 4 "AA" alkaline batteries, 1.5 volts (not included); or 110 or 220V AC current

No. 762ADC	AC/DC Field and Lab Lamp, 110V AC
No. 762ADC220	AC/DC Field and Lab Lamp, 220V AC
No. 6762	4-watt Replacement Bulb

Often Bought Together:
Indicates items often
purchased in conjunction
with other items.

6-Watt Longwave UV Forensic Light Source

The UVP600 is so light and compact, you can take it anywhere! The highly efficient electronic ballast provides a constant high-output. The housing is constructed from vinyl-covered aluminum with acrylic end caps to withstand rugged use. The brushed steel cover ensures bulb protection. This longwave (365nm) UV forensic light comes with a convenient AC Adapter for 110V/220V operation. DC power for the UVP600 is afforded by 8-AA alkaline batteries (included). Blinking LED indicates lamp ON. Straps mounted on both sides permit left or right-handed use.



Includes a 110V/220V AC power adapter

UVP600 Specifications:

- Case Dimensions: 2.75"W x 9.75"H x 4"D (7cm x 24.8cm x 10.2cm)
- Construction: Vinyl-clad aluminum, black; Reflector: Steel w/bright nickel finish; End Caps: Steel w/brushed nickel finish
- Front Cover: 0.031" (31 mil) steel w/brushed nickel finish
- Longwave Bulbs: UV-A black light type, 6-watt, 365nm peak wavelength
- Power Source: 8-AA alkaline (included) or 110V/220V AC
- Switch: Rocker (ON/OFF)

No. UVP600	6-watt Longwave (365nm) Forensic Light
No. UV9692	6-watt (365nm) Replacement Bulb

Dual Wavelength Lights

AC/DC Tiger Twin UV Light Source

Ideal for lab and field use, this Dual Wavelength UV light source can be used for shortwave (254nm) or longwave (365nm) light. Panel lights at the back indicate which wavelength is selected. Choose from the 110V or 220V AC unit, or light can be powered by 4 "C" cell alkaline batteries (not included). **Protect your eyes at all times from shortwave radiation using one of our shortwave eye protection products.**



Includes a 110V or 220V AC power adapter

782ADC Specifications:

- Product Dimensions: 2.625"W x 6.8125"H x 3.25"D (6.7cm x 17.3cm x 8.2cm)
- Weight (w/batteries): 2.15 lbs. (1kg)
- Construction: Vinyl-clad aluminum, black
- Reflector: Steel w/bright nickel finish
- End Caps: Steel w/brushed nickel finish
- Shortwave Bulb: UV-C germicidal type, 4-watt, 254nm peak wavelength
- Longwave Bulb: UV-A black light type, 4-watt, 365nm peak wavelength
- Power Source: 4 alkaline "C" cells (1.5 volts) not included; 110 or 220V AC
- Control Panel: Modular, all push-button control panel; power switch & SW/LW selector, alternate action; high-output switch, momentary action

No. 782ADC	AC/DC Tiger Twin UV Light, 110V AC
No. 782ADC220	AC/DC Tiger Twin UV Light, 220V AC
No. 6762	4-watt (365nm) Longwave Replacement Bulb
No. 6247	4-watt (254nm) Shortwave Replacement Bulb

Pricing Information:
For current pricing visit
www.sirchie.com, or
call 800.356.7311

Often Bought Together:
Indicates items often
purchased in conjunction
with other items.

6-Watt Dual UV Wavelength Forensic Light

This dual band, AC/DC powered ultraviolet light source features two 6-watt lights—one shortwave (254nm) and one longwave (365nm), giving the unit the versatility for use in many situations where an alternate light source is needed. Unit can be used 110V/220V AC or powered by 16 AA alkaline batteries (not included). **Protect your eyes at all times from shortwave radiation using one of our shortwave eye protection products.**



UVP120DW Specifications:

- Dimensions: 6.5"W x 9.75"H x 4"D (16.5cm x 24.8cm x 10.2cm)
- Construction: Vinyl-clad aluminum, black; Reflector: Steel w/bright nickel finish; End Caps: Steel w/brushed nickel finish
- Front Cover: Steel w/brushed nickel finish
- Shortwave Bulbs: UV-C germicidal type, 6-watt, 254nm peak wavelength;
- Longwave Bulbs: UV-A black light type, 6-watt, 365nm peak wavelength
- Power Source: 16-AA alkaline (not included) or 110V/220V AC
- Switches: Rocker (ON/OFF)

No. UVP120DW	6-watt Dual UV Wavelength Forensic Light
No. UV9692	6-watt (365nm) Longwave Replacement Bulb
No. SW969B	6-watt (254nm) Shortwave Replacement Bulb

Shortwave UV Lights

Sirchie 6-watt Shortwave UV Forensic Light Source

These 6-watt, shortwave UV (254nm) lights are constructed of vinyl-clad aluminum with a brushed steel cover. Straps are mounted on both sides of the unit for left or right-handed use. An AC Adapter is provided for 110V/220V operation, or for more portability, the light can be powered by 8-AA alkaline batteries (included). A ¼" threaded tripod mount on the bottom of the unit enables hands-free use. **Protect your eyes at all times from shortwave radiation using one of our shortwave eye protection products.**



Includes a 110V AC power adapter

UVP600ST Specifications:

- Case Dimensions: 2.75"W x 9.75"H x 4"D (7cm x 24.8cm x 10.2cm)
- Construction: Vinyl-clad aluminum, black
- Front Housing: Steel w/brushed nickel finish
- Shortwave Bulbs: UV-C germicidal type, 6-watt, 254nm peak wavelength
- Power Source: 8-AA alkaline (included) or 110V AC
- Switch: Rocker (ON/OFF)

No. UVP600ST	6-watt Shortwave UV Light
No. SW969B	6-watt Shortwave UV Replacement Bulb

9-Watt Longwave and Shortwave UV Forensic Light Sources

These light sources features a dual-section longwave (365nm) or shortwave (254 nm) light source capable of swinging 180 degrees for many situations. It's compact and light-weight for transport and storage. Eye and skin protection must be worn when using a shortwave UV light source. **Protect your eyes at all times from shortwave radiation using one of our shortwave eye protection products.**



UVP900 Specifications:

- Construction: Rugged ABS plastic
- Lamp: 9-watt, longwave (365nm)
- Swinging Lamp Head: 180 degrees
- Internal ON/OFF Switch: lamp illuminates when head is raised
- Power: 110V AC
- Dimensions: 10.5"H x 3.25"D x 3.4"W (27.67cm x 8.25cm x 8.63cm)
- Weight: 2.3 lbs. (1.04kg)

SKSUV13 Specifications:

- Construction: Rugged ABS plastic
- UV Lamp: 13-watt, 254nm, germicidal
- Swinging Lamp Head: 180 degrees
- Internal ON/OFF Switch: lamp illuminates when head is raised
- Power: 110V AC
- Dimensions: 10.5" x 3.25" x 3.4" (27.67cm x 8.25cm x 8.63cm)
- Weight: 2.3 lbs (1.04kg)

No. UVP900	9-watt Longwave (365nm) Forensic Light
No. SKSUV13	13-watt Shortwave (254nm) Forensic Light
No. 11954	9-watt Longwave (365nm) Replacement Bulb
No. SKSUV13B	13-watt Shortwave (254nm) Replacement Bulb

Shortwave UV Mini Light Source

Specifically designed to use with the Krimesite Imager, investigators can use this light source as a fully portable, battery-operated light source for field and lab use. This is perfect for tight spaces or for close-up examination.



CUV100TS Specifications:

- Dimensions: 6.25"H x 2"W x .75"D (15.9cm x 5.1cm x 1.9cm)
- Weight w/batteries: 8.9 oz. (252g)
- Construction: Rugged ABS plastic
- Shield Guard: Brushed Nickeloid
- Peak Wavelength: 254nm
- Bulb: Shortwave UV-C germicidal type (G4T5), 4-watt
- Power Switch: Slide ON/OFF
- Power Source: 4 "AA" Alkaline Batteries, 1.5 volts (included)

No. CUV100TS	Shortwave UV Mini Light Source
No. 6247	4-Watt 254nm Replacement Bulb

UV Protection Products

RUVIS technology uses Shortwave UV light sources and emits harmful radiation. Use of these devices requires proper eye and skin protection. It's important for investigators to use one of the products below or something similar.

UV Protective Spectacles

Top and side shield design provides full protection and the polycarbonate construction is impact-resistant.



No. 797GV	UV Protective Spectacles
-----------	--------------------------

Pricing Information:
For current pricing visit
www.sirchie.com, or
call 800.356.7311

UV Protective Goggles

Constructed of specially formulated plastic which blocks UV transmission over all UV wavelengths and provides optimum contrast in viewing and lessened eye fatigue. Has a lightweight design with a flexible rubber trim that will fit comfortably over the face, even with prescription glasses.



No. 798GV

UV Protective Goggles

UV Protective Face Shield

Specially designed to protect the entire face from hazardous shortwave UV light while completely eliminating "blue haze" interference normally associated with long wavelengths. Dimensions: 8.25"H x 17" dia. (20.9cm x 43.2cm).



No. 799UV

UV Protective Face Shield

UV Protective Face Shield with Shroud

This shield offers the same shortwave UV-blocking properties as the 799UV with the added protection of a dense cotton-weave shroud that is attached with hook & loop fasteners for easy removal.



No. 798GVH

UV Protective Face Shield w/Shroud

Camera Lens Barrier Filters

These filters are used in conjunction with alternate light sources to enhance items of interest and eliminate backgrounds when shooting photos of evidence. Filters are available in three colors (Orange, Yellow, Red) and all the most popular lens thread sizes. Filter kits that include one filter of each color in your choice of thread size are also available.



No. CFY49	Camera Lens Barrier Filter, Yellow, 49mm
No. CFY52	Yellow, 52mm
No. CFY55	Yellow, 55mm
No. CFY58	Yellow, 58mm
No. CFY62	Yellow, 62mm
No. CFY67	Yellow, 67mm
No. CFY72	Yellow, 72mm
No. CFY77	Yellow, 77mm
No. CFN49	Camera Lens Barrier Filter, Orange, 49mm
No. CFN52	Orange, 52mm
No. CFN55	Orange, 55mm
No. CFN58	Orange, 58mm
No. CFN62	Orange, 62mm
No. CFN67	Orange, 67mm
No. CFN72	Orange, 72mm
No. CFN77	Orange, 77mm
No. CFR49	Camera Lens Barrier Filter, Red, 49mm
No. CFR52	Red, 52mm
No. CFR55	Red, 55mm
No. CFR58	Red, 58mm
No. CFR62	Red, 62mm
No. CFR67	Red, 67mm
No. CFR72	Red, 72mm
No. CFR77	Red, 77mm
No. AFK49	Lens Filter Kit (1 ea. Yellow, Orange, Red), 49mm
No. AFK52	(1 ea. Yellow, Orange, Red), 52mm
No. AFK55	(1 ea. Yellow, Orange, Red), 55mm
No. AFK58	(1 ea. Yellow, Orange, Red), 58mm
No. AFK62	(1 ea. Yellow, Orange, Red), 62mm
No. AFK67	(1 ea. Yellow, Orange, Red), 67mm
No. AFK72	(1 ea. Yellow, Orange, Red), 72mm
No. AFK77	(1 ea. Yellow, Orange, Red), 77mm

Often Bought Together:
Indicates items often purchased in conjunction with other items.

Barrier Filter Glasses & Goggles

Investigators should use barrier filter glasses and goggles to view evidence illuminated with forensic alternate light sources. We offer a variety of goggles and glasses to fit your needs:

Bluemaxx Barrier Filter Goggles

Convenient viewing for crime scene searches and photography when using blue alternate light sources at 455nm or our BLUEMAXX products (390nm-520nm). Our BMS300 Goggles can be worn over corrective eyewear.



No. BMS300

Orange Barrier Filter Goggles w/case

Bluemaxx Barrier Filter Glasses

Convenient viewing for crime scene searches and photography when using blue alternate light sources at 455nm or our BLUEMAXX products (390nm-520nm).



No. BMS400

Orange Barrier Filter Glasses

Sport Frame Barrier Filter Glasses

These stylish barrier filter glasses provide a comfortable fit while working with alternate light sources. Choose from red, orange or yellow.



No. BFR10	Sport Frame Barrier Filter Glasses (Red)
No. BFN10	Sport Frame Barrier Filter Glasses (Orange)
No. BFY10	Sport Frame Barrier Filter Glasses (Yellow)

Barrier Filter Glasses (Over Glasses)

These barrier filter over glasses are designed to fit comfortably over corrective eye glasses while working with alternate light sources. Choose from red, orange or yellow.



No. BFR20	Barrier Filter Glasses (Red)
No. BFN20	Barrier Filter Glasses (Orange)
No. BFY20	Barrier Filter Glasses (Yellow)

Barrier Filter Goggles with Elastic Strap

These barrier filter goggles have the added comfort of an elastic strap to hold them securely in place. Will fit over corrective eyewear. Choose from red, orange or yellow.



No. BFR30	Barrier Filter Goggles w/strap (Red)
No. BFN30	Barrier Filter Goggles w/strap (Orange)
No. BFY30	Barrier Filter Goggles w/strap (Yellow)