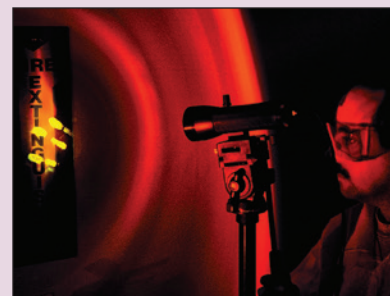


## The Electromagnetic Spectrum

**SIRCHIE®** has developed a variety of Alternate Light Sources (ALS) that are used to identify many types of evidence that would otherwise go undetected under standard lighting or daylight. Utilizing a wide variety of available light generation technologies such as krypton, halogen, fluorescent, and light emitting diodes (LED), along with highly specialized filter materials, SIRCHIE provides another valuable set of tools for the Crime Scene Investigator.

Alternate light is the same light we are all familiar with, only it has been separated into its basic components. Light is a part of the electromagnetic spectrum, which defines all types of radiated energy by wavelengths measured in nanometers (nm). Visible light, such as daylight, is composed of wavelengths between 400nm (blue) and 720nm (red). When visible light is broken down into its components, and used in conjunction with different filters, it can be used to remove backgrounds and highlight objects. Another important light source, ultraviolet light (190nm-400nm), while not visible itself, can often make hidden objects visible.

ALS are typically used in crime scene investigation to identify many forms of evidence. Physiological fluids (semen, urine, and saliva) can be identified through their natural fluorescent properties utilizing UV light. Items such as bone fragments and teeth can be exposed with blue light (455nm) through the use of an orange barrier filter, and can be separated from the background for easy recovery. Other lights can be used for latent print development. Whether using chemical development such as DFO, cyanoacrylate with Basic Yellow, or dusting with fluorescent powders, blue (450nm-470nm) light with the appropriate barrier filter allows the investigator to capture the true evidence with little interference from lighting, background, or other masking factors. SIRCHIE ALS brings evidence out of the dark, and into a new light.



### ForensiTorch™ SPECIFICATIONS:

- **Dimensions:** 6.31" L x 1.6" dia (16cm x 4cm)
- **Weight:** 0.31lb. (143g) w/batteries
- **Construction:** Black, anodized aluminum
- **Batteries:** (2) CR123, 3V
- **LED:** Longwave (395nm) UV LED; +50,000 hrs.
- **Switch:** Push Button ON/OFF

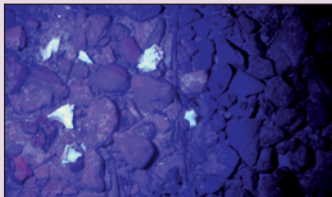
### MMX300 SPECIFICATIONS:

#### Visible Light Sources

- (455nm, 470nm, 505nm, 530nm, 590nm, 625nm, White)
- **Dimensions:** 5.25" x .75" dia. (13.3cm x 1.9cm dia.)
- **Weight w/batteries:** 3.55 oz. (100.6g)
- **Construction:** Machined Aluminum
- **Switch:** Push-button ON/OFF/Momentary
- **LED:** One 3-watt LED; +50,000 hrs. life
- **Batteries:** (2) CR123 Lithium

### MMX300 CONTENTS:

- 1- UVFT100 ForensiTorch™ UV Light (395nm)
- 7- Visible MMX Lights (455nm, 470nm, 505nm, 530nm, 590nm, 625nm, White)
- 1- Light Diffuser
- 1- MMXPOD Light Support Tripod
- 16- CR123 Lithium Batteries
- 1- 797GV UV Protective Spectacles
- 1- FAL208 Yellow Goggles
- 1- FAL207 Red Goggles
- 1- BMS300 Orange Goggles
- 1- MMX300C Custom-fitted, heavy-duty Attache Case w/pre-cut foam insert; Dimensions: 18.5" x 15.5" x 5.5" (47cm x 39.4cm x 14cm); Weight: 10.41 lbs. (4.7kg)



Searching an area littered with small stones (top) complicates the search for physical evidence. Bone fragments were revealed in the middle photograph using the 395nm UV Light and 455nm in the bottom. (Orange barrier filter goggles used when viewing 455nm.)

### MEGAMAXX™ ALS SYSTEM

The megaMAXX™ System is designed to assist the investigator at the crime scene or in the lab. The kit consists of handheld, machined-aluminum, and self-contained light sources—each operating at or very near the individual light frequencies indicated on each light (395-625nm). A white megaMAXX™ light source is included to facilitate general crime scene searches.

### megaMAXX™ Light Diffuser

LEDs are directional, and therefore are very intense. For oblique viewing and photography, where a softer light is required, SIRCHIE®'s engineered diffuser will meet the need.

### ForensiTorch™ UV Light

The ForensiTorch™ UV Light (395nm) should always be used in the preliminary examination and location of physical evidence. It features a 1-watt UV LED and operates from 2 CR123, 3V alkaline batteries.

### megaMAXX™ Tripod

There are many times that you will need to have both hands free to process an area or photograph an item of forensic interest. With this in mind, SIRCHIE provides the megaMAXX™ Tripod. This Light Support features a flexible gooseneck extension with a maximum height of 14" (35.6cm). This allows for precise positioning of the light over the area being processed and aids in facilitating photographs.



Camera lens barrier filters sold separately (see page 135)

CATALOG NO.	DESCRIPTION	PRICE
MMX300	megaMAXX™ III ALS System, 3-watt	



# Alternate Light Source Viewer & Forensic Light Kit

## MEGAMAXX™ ASSISTANT

The megaMAXX™ Assistant is as unique an innovation as the megaMAXX™ System it accompanies. The device, with its 2.5X magnifying lens and interchangeable barrier filters (yellow, red and orange), permits close-up examination of a variety of items of forensic interest. Simply place the unit over the item or area of interest, engage any one of the seven visible megaMAXX™ lights (MMX300 sold separately) of the required frequency into the rear holder and insert the appropriate barrier filter into the front slot. Items of forensic interest that can be successfully detected, examined, and compared with this combination include: *physiological fluids (urine, semen and saliva); trace evidence (hair, fibers, dust prints, etc.); blood and palmar oils (enhanced with fluorescent powder, dyes, and DFO); and Cyanoacrylate Prints stained with Rhodamine 6G, Ardrex, Basic Yellow, and Rhodamine 6G.*



## MMX203 SPECIFICATIONS:

- Dimensions: 6"W x 7.5"H x 8.5"D (15.2cm x 19.1cm x 21.6cm)
- Weight w/out filter: 2 lbs. (.92kg)
- Construction: Rugged metal and plastic
- Magnifier: 4" (10.2cm) dia. w/2.5X magnification
- Barrier Filters: 1/8" (3.2mm) Acrylic Stock; Dimensions: 5.25"W x 7"L (13.3cm x 17.8cm)
- Weight: 2.9 lbs. (1.3kg)



To use, simply select the appropriate barrier filter and slide in the front. Next, select a megaMAXX™ Light Source (not included) and insert in the back of the unit.

### CATALOG NO.

### DESCRIPTION

### PRICE

MMX203

megaMAXX™ Assistant, w/3 Barrier Filters

## TACTICAL MAX FORENSIC LIGHT KIT

The Tactical MAX provides all the light needed to conduct an on-scene forensic investigation: white, 395nm UV, and 455nm blue. Each handheld forensic light is made of tough anodized aluminum and contains an extremely bright 1-Watt LED. This kit was built for field use, contained in a heavy duty nylon case, and includes a flexible tripod that can be used as a third hand. Lightweight and portable, yet rugged and durable—there's no reason to not take the Tactical MAX Forensic Light Kit everywhere.

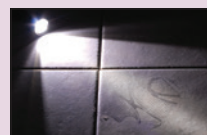


The Tactical MAX Flexible Mini Tripod can be purchased separately and is also compatible MMX300 series forensic lights.



## TMX100 KIT CONTENTS:

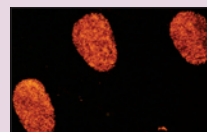
- 1 - White 1-Watt LED Forensic Light, black anodized aluminum
- 1 - UV 395nm 1-Watt LED Forensic Light, black anodized aluminum
- 1 - Blue 455nm 1-Watt LED Forensic Light, black anodized aluminum
- 1 - TMXFT1 Tactical MAX Flexible Mini Tripod
- 1 - Diffuser
- 1 - BMS300 Orange goggles
- 1 - 5.11 Black Nylon Case with SIRCHIE logo



Use the White Light for searches and oblique lighting of evidence.



Use the UV Light for locating evidence that will fluoresce, such as physiological fluids.



Use the Blue Light and orange goggles for dusting with fluorescent powders to eliminate backgrounds.

### ORDER NO.

### DESCRIPTION

### PRICE

TMX100

Tactical MAX Forensic Light Kit

TMXFT1

Tactical MAX Flexible Mini Tripod (only)

Phone: +1.919.554.2244 Fax: +1.919.554.2266



*The No. BM250A Mini BLUEMAXX™ Light features a powerful 3-watt LED rated for more than 50,000 hours of lamp life.*

### BMK250A CONTENTS:

- 1- BM250A Mini BLUEMAXX™ Light
- 1- Light Diffuser
- 1- BMS300 Barrier Filter Goggles w/case
- 2- CR123 Lithium Batteries
- 1- BMK250ACC Black Copolymer Carrying Case w/molded foam inserts;  
Dimensions: 8.5" x 5.5" x 3.1875"  
(21.6cm x 14cm x 8.1cm);  
Weight: 1.58 lbs. (.7kg)

### BMMB100 CONTENTS:

- 1- BMMB100 Micro BLUEMAXX™ Light
- 1- Orange Barrier Filter
- 3- 4A Alkaline Batteries
- 1- Leatherette Case;  
Dimensions: 7" x 3.25" (17.8cm x 8.3cm);  
Weight: 3 oz. (85.1g)

**SHOP  
ONLINE**  
[www.sirchie.com](http://www.sirchie.com)

### MINI BLUEMAXX™ III KIT

Like our full-size BLUEMAXX™ light source, the Mini BLUEMAXX™ III emits a high-intensity blue light (455nm) that can be viewed through the orange barrier filter goggles provided. The light is powered by two (2) CR123 type Lithium batteries and its light beam comes from a single, 3-watt LED that is rated at more than 50,000 hours of lamp life. The BMK250A is excellent for locating and facilitating photographs of a variety of forensic evidence including physiological fluids (urine, saliva, and semen), and latent prints enhanced with fluorescent powders or dyes.

The hand-held, machined-aluminum, self-contained light source measures 5.25" (13.3cm) in length with a barrel of only .75" (1.9cm) dia. and weighs a mere 3.55 oz. (100.6g).



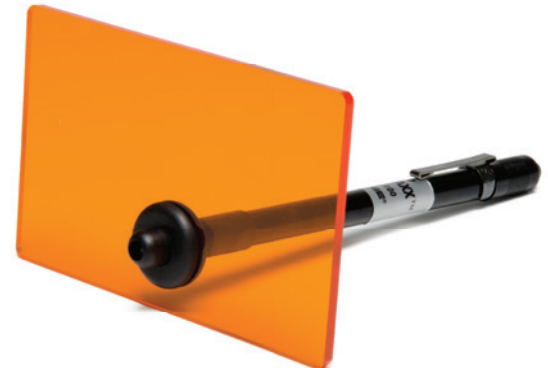
CATALOG NO.	DESCRIPTION	PRICE
BMK250A	Mini BLUEMAXX™ III Kit	

### MICRO BLUEMAXX™

The Micro BLUEMAXX™ provides just the right amount of illumination for searching small areas. It features a powerful blue LED housed in a durable metal, pen-like body that measures 6.5" (16.5cm) in length. The light and included barrier filter conveniently fit in a leatherette case that can be carried in most shirt pockets.



*The BMMB100 conveniently fits into standard and oversized pockets.*



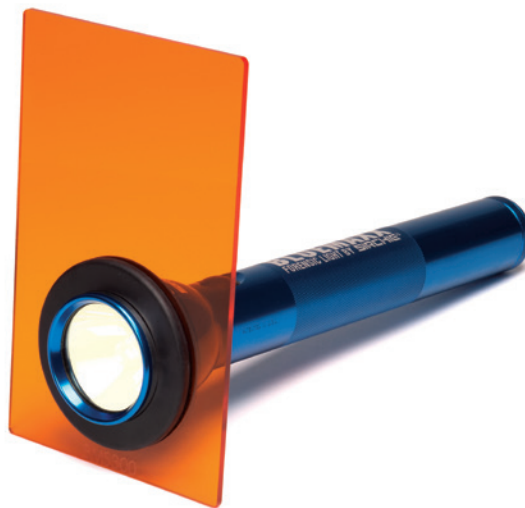
CATALOG NO.	DESCRIPTION	PRICE
BMMB100	Micro BLUEMAXX™ with Case	

### BLUEMAXX™ FORENSIC LIGHT SOURCE

The BM300 is our standard BLUEMAXX™. It is supplied complete with both finely tuned barrier and excitation filters. This rugged, self-contained light source greatly enhances the crime scene investigator's tool chest. In addition to its ability to enhance many types of evidence, the BM300 may also be used for fluorescent photography. This forensic light source uses 3 standard "D" cell batteries (not included). Carrying case sold separately.



BLUEMAXX™ Light shown with optional Carrying Case.



CATALOG NO.	DESCRIPTION	PRICE
BM300	BLUEMAXX™ Forensic Light Source	
BM300CC	Gray Plastic Utility Carrying Case	

### BLUEMAXX™ RECHARGEABLE FORENSIC LIGHT

The BM500 features a halogen lamp and a high-capacity, rechargeable battery. The light is supplied complete with matched barrier and excitation filters. It is ideal for fluorescent photography and investigation. A 110V/220V charging unit is included. (Approx. 1.5 hrs. operation)



The BM500 charger can be wall mounted.



CATALOG NO.	DESCRIPTION	PRICE
BM500	BLUEMAXX™ Rechargeable Forensic Light Source, 110V/220V	
BM500CC	Gray Plastic Utility Carrying Case	

### BM300 SPECIFICATIONS:

- Bulb Type: Krypton, high-intensity, 3.7V, 2.6-watt
- Reflector: Parabolic, calibrated for 5"-8" (12.7cm-20.3cm) spot at 10' (3m)
- Beam Pattern: Adjustable
- Max. Output: 13,000 PBC at 10' (3m)
- Length: 12.3" (31.3cm)
- Weight w/Battery: 30.2 oz. (856.2g)
- Switch: Recessed, push-button, self-cleaning, 3 position
- Battery: 3 Alkaline "D" Cells (not included)
- Construction: Rugged machined aluminum w/knurled design, anodized inside and out (corrosion, water, and shock resistant)
- Battery Contacts: Plated coil spring
- Excitation Filter: All dielectric coating, extremely durable when exposed to humidity, heat, thermal shock and abrasion; meets or exceeds MIL-C-675A and MIL-M-13508C specifications
- Barrier Filter: Acrylic, selected for its spectral characteristics/durability;  
Dimensions: 4.75" x 7.5" (12 cm x 19cm)

### BM300 COMPONENTS:

- 1- BM320 3-D Cell Flashlight
- 1- BM321 Krypton Bulb
- 1- BM300S Barrier Filter
- 1- BMF100B Excitation Filter

### BM500 SPECIFICATIONS:

- Bulb Type: 6V, 11-watt high-intensity halogen (50-hour rating)
- Output: 30,000 peak beam candlepower at 10' (3m)
- Reflector: Parabolic, calibrated for 8"-10" (20.3cm-25.4cm) spot at 10' (3m)
- Beam Pattern: Adjustable cam action with 1/4 turn of head
- Construction: Rugged machined aluminum w/knurled design, anodized inside and out (corrosion, water, and shock resistant)
- Switch: Recessed, push-button, self-cleaning, 3 position
- Battery: 5 cell, (1/2 "D") nickel cadmium battery pack. Rechargeable up to 1000 times
- Length: 12.6" (32cm)
- Weight w/Battery: 32 oz. (907.2g)
- Excitation Filter: All-dielectric coating, extremely durable when exposed to humidity, heat, thermal shock and abrasion; meets or exceeds MIL-C-675A and MIL-M-13508C specifications
- Barrier Filter: Acrylic, selected for its spectral characteristics/durability;  
Dimensions: 4.75" x 7.5" (12 cm x 19cm)

### Charger Cradle:

- Construction: Black ABS plastic "cradle/clamp" type
- Power Source: Universal 12-14V DC
- Charge Contact: 360° positive contact
- Charging Indicator: Red LED
- Charge Rate: 220 milliamperes typ.
- Charge Time: 12-14 hrs. typ.

### Converter:

- Input: 110V AC 60 Hz or 220V AC
- Output: 12-14V DC
- Insulation: Double

### BM500 COMPONENTS:

- 1- BM520 Rechargeable Flashlight
- 1- BM521 Halogen Bulb
- 1- BM522 Charger Cradle
- 1- BM523 Converter, 110V /220V
- 1- BM525 NiCad Battery Pack
- 1- BM500 Barrier Filter
- 1- BMF100R Excitation Filter



## BM600 SPECIFICATIONS:

### Light Head:

- Length: 6.5" (16.5cm)
- Major Diameter: 2.25" (5.7cm)
- Minor Diameter: 1.70" (4.3cm)
- Body: ABS plastic w/aluminum head
- Weight: 9.4 oz. (266.5g)
- Lamp Type: 20-Watt quartz halogen, 12V DC

### Intensity Enhancement:

- Lamp Driver: Power MOSFET
- Duty Cycle: 22-100% typical
- Range: 4.5 to 20-watts typical
- Parasitic Current: Below 2 milliamps

### Power Supply:

- Dimensions: 1.25" x 2" x 3.75"  
(3.2cm x 5.1cm x 9.5cm)
- Weight: .85 lbs. (.38kg)
- Continuous Duty Amps: 2
- Voltage Regulation: Solid-state integrated
- Input/Output: 100-240V AC, 50-60Hz input, 12V DC output

## BM600 CONTENTS:

- 1- BM6001 AC Extension Cord, 6 ft. (1.8m)
- 1- BM6002 Cigarette Lighter Adapter Cord, 10 ft. (3m)
- 1- BM6003 Light Head, ABS Body w/Aluminum Head
- 1- Power Supply, 110/220V AC to 12V DC, 2 amp
- 1- BM6004 DC Extension Cable, 6 ft. (1.8m)
- 1- BMS300 Barrier Filter Goggles
- 1- KCP224 Texturized Polypropylene Accessory Case
- 1- BM600CC Carrying Case w/custom Inserts; Dimensions: 17.5" x 10.25" x 8.625" (14.5cm x 26cm x 21.9cm)



No. BM6009 is an excellent companion to our BM600 BLUEMAXX™ Forensic Light

## BMV100 SPECIFICATIONS:

- Dimensions: 5.75"W x 7.5"H x 8.625"D (14.6cm x 19cm x 21.9cm)
- Weight (w/out filter or adapter): 2.2 lbs. (1kg)
- Construction: Rugged metal and plastic

## BMV100 CONTENTS:

- 1- BMV Stand
- 1- AC Adapter
- 1- Orange Barrier Filter

## BLUEMAXX™ FORENSIC LIGHT SOURCE KIT

At the heart of the BM600 kit is a high-powered, tripod-mountable, portable forensic blue light source which utilizes an AC power supply. This light is especially useful for extended crime scene searches and photography because it does not require any batteries.

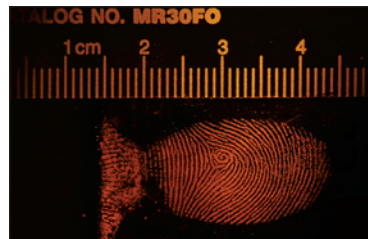
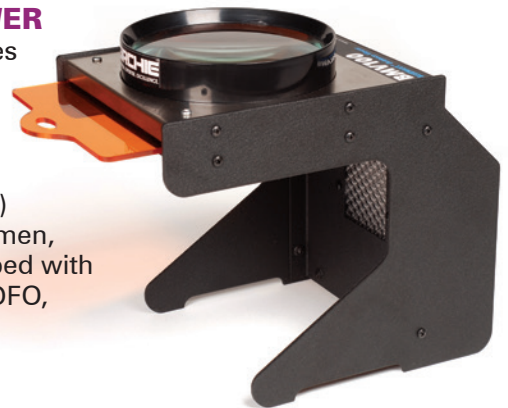
Crime scene photography is enhanced thanks to the BM600's high-light output levels. An intensity control allows the user to customize the light level for individual needs. The BM600 is supplied with a standard 110/220V AC power supply unit. The pair of BMS300 Barrier Filter Goggles provided are required to visualize evidence exposed to the BLUEMAXX™ light. The BM600 kit is contained in a Gray Plastic Utility Carrying Case. Dimensions: 17.5" x 10.25" x 8.625" (44.5cm x 26cm x 21.9cm). The optional Professional Duty Tripod is an excellent companion to our BM600 BLUEMAXX™ Forensic Light. Use this tripod to mount the BM600 Light—freeing your hands and allowing you to continue your search of the crime scene.



CATALOG NO.	DESCRIPTION	PRICE
BM600	BLUEMAXX™ Forensic Light Source Kit, 110V/220V	
BM6009	Professional Duty Tripod (Optional)	

## BLUEMAXX™ EVIDENCE VIEWER

This self-contained device incorporates a 4" wide field 2.5X magnifier and two built-in light sources—a diffused, 3-watt, white LED for examining objects under normal lighting and one BLUEMAXX™ 3-watt LED (455nm) for examining physiological fluids (semen, saliva, urine) and latent prints developed with fluorescent powders and chemicals (DFO, Basic Yellow, and Ardrex).



Developed latent print as photographed through the magnifying lens.



To use, slide barrier filter (included) in the front of the unit, and switch power on (110V AC or 220V AC).

CATALOG NO.	DESCRIPTION	PRICE
BMV100	BLUEMAXX™ Evidence Viewer, 110V	
BMV100220	BLUEMAXX™ Evidence Viewer, 220V	

### BLUEMAXX™ AMALGAM KITS

The BLUEMAXX™ Amalgam breaks new ground in LED technology. This palm-sized light is a multi-purpose, focused beam instrument that permits use as a hand-held, head-mounted, or table-mounted forensic light source. The BLUEMAXX™ Amalgam light source produces an excitation band at a frequency of 470nm—ideal for locating many forms of physical evidence. It features six powerful LEDs operated by an electronic micro-switch, offering 7 operational modes. Orange barrier filter goggles are included.



No. BMA100 Kit

### BMA100 CONTENTS:

- 1- BLUEMAXX™ Amalgam Light w/headband and belt clip
- 1- BMS300 Orange Barrier Filter Goggles
- 1- FAC401 FACII Brush w/FAC4011 REDescent™ Fluorescent Powder
- 1- 125L Standard Magnetic Applicator
- 1- LL601 REDcharge™ Magnetic Powder, 1 oz. (30ml)
- 1- LL602 ORANGEcharge™ Magnetic Powder, 1 oz. (30ml)
- 1- LL605 YELLOWcharge™ Magnetic Powder, 1 oz. (30ml)
- 1- 123LRWB Red, White & Blue Whopping Marabou Feather Duster
- 3- AA Alkaline Batteries
- 1- BMA100CC Copolymer Carrying Case, Dimensions: 12.125" x 7.25" x 5.5" (30.8cm x 18.4cm x 14cm); Weight: 3 lbs. (1.4kg)

### BMA200 CONTENTS:

- 1- BLUEMAXX™ Amalgam Light w/headband and belt clip
- 1- BMS300 Orange Barrier Filter Goggles
- 3- AA Alkaline Batteries
- 1- BMA200CC Molded Carrying Case, Dimensions: 8.5" x 5.5" x 3.1875" (21.6cm x 14cm x 8.1cm); Weight: 1 lbs. (.45kg)



No. BMA200 Kit

**SHOP  
ONLINE**   
[www.sirchie.com](http://www.sirchie.com)

CATALOG NO.	DESCRIPTION	PRICE
-------------	-------------	-------

BMA200	BLUEMAXX™ Amalgam Kit	
--------	-----------------------	--



## BMK700/705 CONTENTS:

- 1- BM300 BLUEMAXX™ Forensic Light Source (BMK700 only)
- 1- BM500 BLUEMAXX™ Rechargeable Forensic System, 110V AC (BMK705 only)
- 1- LL701 REDeSCENT™ Fluorescent Latent Powder, 2 oz. (59ml)
- 1- LL703 GREENeSCENT™ Fluorescent Latent Powder, 2 oz. (59ml)
- 2- 123LB Black Marabou Feather Dusters
- 1- 144L2 Transparent Lifting Tape, 2" x 360" (5.1cm x 10.97m)
- 1- 144L4 Transparent Lifting Tape, 4" x 360" (10.2cm x 10.97m)
- 10- FC34311 Reversible Backing Cards
- 1- BMK7001 Copolymer Carrying Case, Dimensions: 17.5" x 10.25" x 8.625" (44.5cm x 26cm x 21.9cm); Weight: 5.65 lbs. (2.5kg)

## BLUEMAXX™ PATROL KIT

Officers may locate, develop, enhance, and lift latent print evidence, as well as locate physiological fluids such as semen, saliva, and urine (for collection and laboratory analysis) with this kit. The Patrol Kit is supplied with a choice of BLUEMAXX™ illumination systems. Included are REDeSCENT™ and GREENeSCENT™ fluorescent fingerprint powders, two black marabou brushes, reversible backing cards and two sizes of lifting tape.



No. BMK700 pictured

CATALOG NO.	DESCRIPTION	PRICE
BMK700	BLUEMAXX™ Patrol Kit with BM300 Light	
BMK705	BLUEMAXX™ Patrol Kit with BM500 Rechargeable Light, 110V/220V	

## BMK750/755 CONTENTS:

- 1- BM300 BLUEMAXX™ Forensic Light Source (BMK750 only)
- 1- BM500 BLUEMAXX™ Rechargeable Forensic System, 110V AC (BMK755 only)
- 1- LL701 REDeSCENT™ Fluorescent Latent Powder, 2 oz. (59ml)
- 1- LL703 GREENeSCENT™ Fluorescent Latent Powder, 2 oz. (59ml)
- 1- LL704 SILVER/REDeSCENT™ Fluorescent Latent Powder, 2 oz. (59ml)
- 1- LL705 YELLOWeSCENT™ Fluorescent Latent Powder, 2 oz. (59ml)
- 1- LL601 REDCHARGE™ Fluorescent Magnetic Powder, 1 oz. (30ml)
- 1- LL603 GREENCHARGE™ Fluorescent Magnetic Powder, 1 oz. (30ml)
- 2- 122L Fiberglass Latent Print Brushes
- 1- 123LB Black Marabou Feather Duster
- 1- 123LW White Marabou Feather Duster
- 1- 125MD MEGAWAND Magnetic Applicator
- 1- 144L2 Transparent Lifting Tape, 2" x 360" (5.1cm x 10.97m)
- 1- 144L4 Transparent Lifting Tape, 4" x 360" (10.2cm x 10.97m)
- 20- FC34311 Reversible Backing Cards
- 1- BMK7501 Copolymer Carrying Case, Dimensions: 19" x 11.5" x 10.5" (48.3cm x 29.2cm x 26.7cm); Weight: 8.85 lbs. (4kg)

## BLUEMAXX™ LATENT SPECIALIST KIT

Crime scene search officers can locate, develop, enhance and lift latent print evidence utilizing a variety of fluorescent powders and applicators, both regular and magnetic, with the products supplied in this kit.

Physiological fluids such as semen, saliva, and urine may be located using the BLUEMAXX™ for subsequent collection and laboratory analysis. This kit is supplied with a choice of BLUEMAXX™ illumination systems.



No. BMK750 pictured

CATALOG NO.	DESCRIPTION	PRICE
BMK750	BLUEMAXX™ Latent Specialist Kit with BM300 Light	
BMK755	BLUEMAXX™ Latent Specialist Kit with Rechargeable BM500 Light, 110V/220V	



### BLUEMAXX™ MASTER FUMING AND EVIDENCE LOCATING KIT

This is **SIRCHIE®**'s top-of-the-line BLUEMAXX™ kit which offers the investigator the capability of handling a wide variety of crime scene circumstances. It provides the tools for locating physiological fluids (for subsequent collection), locating and developing fingerprints, enhancing the prints with forensic dyes and powders, and lifting and processing the latent prints.

The kit includes a rechargeable BLUEMAXX™ illumination system along with an expanded inventory of fingerprint developing tools and agents. A practical assortment of both regular and magnetic fluorescent fingerprint powders, and a generous selection of dusting tools for both methods are included.

The kit also features a SCW100 CYANOWAND™ Kit for the added versatility of on-the-spot glue-fuming at the crime scene. Cyanoacrylate developed prints may be enhanced with fluorescent powder and illuminated with the BLUEMAXX™ BM500 for photographing as desired. An ample variety of fingerprint lifting supplies are provided to aid in the final step of collecting crime scene evidence.



### MFE1000 CONTENTS:

- 1- BM500 BLUEMAXX™ Rechargeable Forensic System, 110V/220 AC
- 2- 123LB Black Marabou Feather Dusters
- 1- 123LW White Marabou Feather Duster
- 1- 125MD SEARCH® MEGAWAND™
- 1- 131LT Hinge Lifter, Transparent, 2" x 4" (5.1cm x 10.2cm), 12 ea.
- 1- 131LW Hinge Lifter, White, 2" x 4" (5.1cm x 10.2cm), 12 ea.
- 1- 144L2 Fingerprint Lifting Tape, Transparent, 2" x 360" (5.1cm x 9.1m)
- 1- 144L4 Fingerprint Lifting Tape, Transparent, 4" x 360" (10.2cm x 109.7m)
- 1- 317M Magnifier, 3" (7.6cm) dia.
- 1- BMS300 Barrier Filter Goggles
- 1- FC343 Reversible Backing Card, 100 ea.
- 1- KCP110 Scissors, 5" (12.7cm)
- 1- KCP115 LED Penlight w/batteries
- 1- KCP116 Pocket Notebook w/Calendar
- 1- LL601 REDCHARGE™ Fluorescent Magnetic Powder, 1 oz. (30ml)
- 1- LL603 GREENCHARGE™ Fluorescent Magnetic Powder, 1 oz. (30ml)
- 1- LL605 YELLOWCHARGE™ Fluorescent Magnetic Powder, 1 oz. (30ml)
- 1- LL701 REDESCENT™ Fluorescent Latent Print Powder, 2 oz. (59ml)
- 1- LL705 YELLOWESCENT™ Fluorescent Latent Print Powder, 2 oz. (59ml)
- 1- LVS500 Basic Yellow, After Fuming Fluorescent Dye Spray/w Sprayer, 500ml
- 1- SCW100 CYANOWAND™ Fingerprint Kit
- 2- SCW200 CYANOWAND™ Cartridge Packages, 10 per pkg.
- 2- SCW300 Mega-Cartridge Pkgs., 10 per
- 3- SF00771 Latex Disposable Glove Pairs
- 1- KCP152 Accessory Carrying Case
- 1- MFE1001 Rugged Black Plastic Copolymer Carrying Case; Dimensions: 27.5" x 16.5" x 7" (69.9cm x 41.9cm x 17.8cm); Weight: 16 lbs. (7.2kg)



No. SCW100 CYANOWAND™ Kit is supplied to facilitate latent print fuming.

#### CATALOG NO.

#### DESCRIPTION

#### PRICE

MFE1000 BLUEMAXX™ Master Kit w/Rechargeable BM500, 110V/220V



A technician uses the BM300 to facilitate a photograph of enhanced latent prints on a magazine cover.

### BML100 CONTENTS:

- 1- Digital Camera w/operator's manual & software
- 1- Video/Audio Connection Cable
- 1- USB Connection Cable
- 4- AA Alkaline Batteries
- 1- BM300 BLUEMAXX™ Forensic Light Source and 3 Alkaline D-Cells
- 1- DEPS102 MiniPod w/removable Barrier Filter
- 1- BMS300 BLUEMAXX™ Barrier Goggles w/ Case
- 1- Barrier Filter, 58mm
- 1- LL701 REDescent™ Latent Print Powder, 2 oz. (59ml)
- 1- LL703 GREENescent™ Latent Print Powder, 2 oz.(59ml)
- 1- LL704 Silver/REDescent™ Latent Print Powder, 2 oz. (59ml)
- 3- 122L1 Fiberglass Brush, Kit Type
- 1- 131LB Black Hinge Lifters, 2" x 4" (5.1cm x 10.2cm), 12 ea.
- 1- 131LW White Hinge Lifters, 2" x 4" (5.1cm x 10.2cm), 12 ea.
- 1- MR30FO Fluorescent Scales, Orange, 6" (15.2cm), 10-pack
- 1- Rugged Black Plastic Copolymer Carrying Case w/Custom Foam Insert; Dimensions: 21" x 17" x 10.5" (53.3cm x 43.2cm x 26.7cm); Weight: 15.94 lbs. (7.2kg)



A magazine cover (top) was dusted with LL701 REDescent™ and illuminated with the BM300 BLUEMAXX™ for the resultant digital photograph shown (bottom).

### BLUEMAXX™ DIGITAL LATENT EVIDENCE PHOTO SYSTEM

**Digital Photography** has become the method of choice for crime scene photographers. So, we have combined this vital recovery method with our BLUEMAXX™ system and fluorescent latent fingerprint powders. By employing a high-resolution digital camera, evidence photos are sharp, crisp, and clear.

At the core of the BML100 Digital Latent Evidence Photo System is a high-resolution digital camera capable of recording short video/audio segments if required. The camera features a built-in flash with fully-automatic or manual exposure, as well as a macro setting, giving the camera the kind of flexibility needed to complete BLUEMAXX™ photography as well as crime scene photography.

The kit includes the BM300 Forensic Light Source along with an expanded inventory of fingerprint developing tools and agents. A practical assortment of regular fluorescent fingerprint powder and dusting tools are also provided.



Digital camera may not be as pictured—call for details.

### BML100 ADVANTAGES:

- High-resolution images
- System permits quick, efficient downloads
- All-in-one development and recording of latent print evidence using fluorescent/ALS technology

#### CATALOG NO.

#### DESCRIPTION

#### PRICE

BML100

BLUEMAXX™ Digital Latent Evidence Photo System



### EXCITATION FILTERS

Excitation filters feature superior spectral stability and physical durability characteristics. Filter coatings are hard, all dielectric. It's extremely durable when exposed to humidity, heat, thermal shock, abrasion and handling. 4 mil thick, measures 2" dia. (5.1cm dia.). Bandpass is from 400nm-500nm.



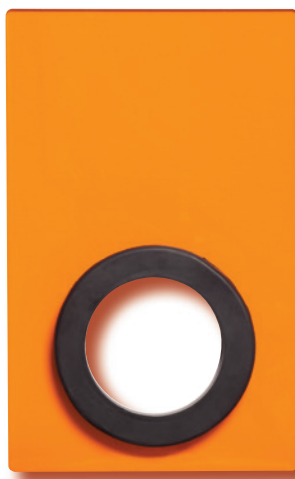
CATALOG NO.	DESCRIPTION	PRICE
BMF100B	Excitation Filter for Mag-Lite®, 2" dia. (5.1cm)	
BMF100R	Excitation Filter for Mag-Lite® Rechargeable, 2" dia. (5.1cm)	
BMF101	Excitation Filter for Streamlight®, 2" dia. (5.1cm)	

### BLUEMAXX™ BARRIER FILTERS

These barrier filters are made of a transparent acrylic material selected for its spectral characteristics and durability. Filter edge at 530nm. They are available for use with the Mag-Lite® and the rechargeable Mag-Lite® as well as an 8" x 8" (20.3cm x 20.3cm) hand-held version.



No. BOVS88 Handheld Barrier Filter



No. BM300S Barrier Filter for Mag-Lite®

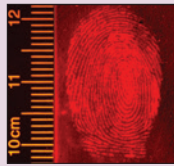
CATALOG NO.	DESCRIPTION	PRICE
BOVS88	Hand-Held Barrier Filter, 8" x 8" (20.3cm x 20.3cm)	
BM300S	Barrier Filter for Mag-Lite®, 4.75" x 7.5" (12cm x 19cm)	
BM500S	Barrier Filter for Mag-Lite® Rechargeable, 4.75" x 7.5" (12cm x 19cm)	



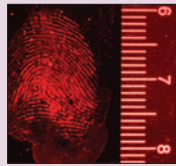
The two key components that make up a Bluemaxx™ Forensic Light are the Excitation Filter, which fits over the light itself, and the Barrier Filter, through which the operator views evidence.

**SHOP  
ONLINE**   
[www.sirchie.com](http://www.sirchie.com)

## Alternate Light Sources



DFO processed latent @ 505nm, viewed with orange barrier filter.



Rhodamine 6G processed latent @ 530nm, viewed with red barrier filter.

### SPECIFICATIONS:

#### Sliding Filter Arrays:

FAL301F: 365nm, 415nm, 450nm, white light

FAL302F: 470nm, 505nm, 530nm, white light

FAL300 Lamp Assembly:

Light Source:

- 35-watt, high intensity Xenon lamp/igniter
- Approx. 3000 hrs. of operation
- Color temp.: ~4200° K. Lamp
- Output: 3200 lumens

Dimensions: 18.75" x 4.5" x 7.25"  
(47.6cm x 11.4cm x 18.4cm)

Weight w/battery & filter:  
5.9 lbs. (2.7kg)

Cooling: 12V DC 0.15 Amp 11CFM Fan

#### Battery Charger:

- Five hour charging time
- Input: 110V AC, 60 Hz
- Output: 12V DC 2 AMP
- Auto. voltage regulation, monitors battery condition
- Weight: 3.5 lbs. (1.6kg)
- Dimensions: 9" x 4.5" x 3.375"  
(22.9cm x 11.4cm x 8.6cm)

#### Battery:

- Two Sealed, Lead-Acid, 6V DC, 8Ah in series
- Approx. 120 min. continuous operation from full charge
- Weight: 6.1 lbs. (2.8kg)

### CONTENTS:

- 1- FAL300 Lamp Assembly with High-Intensity Xenon lamp
- 2- FAL309 Battery Packs
- 1- FAL201F Sliding Filter Array (365nm, 415nm, 450nm, white)
- 1- FAL202F Sliding Filter Array (470nm, 505nm, 530nm, white)
- 4- Barrier Filter Goggles (Yellow, Orange, Red, Clear-UV)
- 1- Battery Charger
- 1- BM6009 Heavy Duty Tripod
- 1- Durable Molded Carrying Case w/precut foam insert; Dimensions: 28"W x 17"H x 10.5"D (71.1cm x 43.2cm x 26.7cm); Weight: 25 lbs. (11.5kg)

## Forensic Alternate Light Source

### FORENSIC ALTERNATE LIGHT SOURCE

Physical and trace evidence are the backbone of criminal investigations, and many prosecutors are reluctant to file formal charges without them. If the perpetrator has left some form of evidence behind that can prove his or her presence at the crime scene, the Forensic Alternative Light is the tool you need!

#### Compact and Self-Contained

The Forensic Alternate Light is fully portable—offering unlimited movement around the crime scene. It can be hand-held in two different positions or mounted on a tripod (included). Battery operation allows you to search a multitude of surfaces in the tightest situations—especially when searching for microparticle, physiological, or latent print evidence.



#### Sliding Filter Arrays

The Sliding Filter Arrays provided with the kit permit quick selection of six individual wavelengths, as well as white light, and easy changeover between arrays. These bandpass filters cover ranges from 365nm (ultraviolet) to 530nm (visible). This broad range of light is capable of visualizing many forms of physical and trace evidence in both the field and laboratory. Detents machined into each array provide positive positioning between filters. Each array is labeled for quick and easy selection.

#### High-Intensity Xenon Lamp

The Xenon lamp in the Forensic Alternate Light produces an intense beam of light that is ideal to search for hair, fibers, footwear evidence, and more.



CATALOG NO.	DESCRIPTION	PRICE
FAL3000	Forensic Alternate Light Source Kit	
FAL203	Additional High-Intensity Xenon Lamp	
FAL306	AC Adapter Kit 120V/60Hz	
FAL306220	AC Adapter Kit 220V/50Hz	
FAL309	Rechargeable 12V DC 8Ah Battery Pack	
FAL309B	Replacement 12V DC 8Ah Battery Set	



# Longwave Light Sources

## UV FORENSITORCH™

The UV ForensiTORCH™ features a single, very high intensity 1-watt, longwave UV LED which provides 50,000+ hours of life under normal use. Whether the search is conducted in subdued light or broad daylight, the UVFT100 is the perfect choice in the preliminary examination and location of physical evidence. This light-weight unit is powered by 2 CR123, 3V alkaline batteries (included) that typically provide uninterrupted light for up to 4 hours.

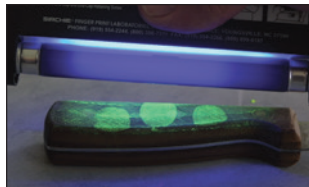
The UV ForensiTORCH™ operates at a frequency of 395nm (+/- 5nm). This is an ideal wavelength for locating items of forensic interest. No special barrier goggles are required to view any fluorescence, but it is recommended that UV protective goggles be worn for general eye protection.



CATALOG NO.	DESCRIPTION	PRICE
UVFT100	UV ForensiTORCH™	

## LONGWAVE UV MINI LIGHT SOURCE

The CUV100T is a fully portable, battery-operated, 360nm longwave UV light source for use in crime scene search and forensic applications. The light is ideal for theft detection in viewing invisible stains, powders, and pastes. The unit is powered by four AA alkaline batteries (not included).



*The CUV100T light source is useful in theft detection in viewing invisible stains, powders and pastes at the crime scene.*

## MINI LIGHT TRIPOD

The MLT100 permits hands-free examination of physical evidence and many other applications. This sturdy tripod is the ideal support for the CUV100T light (sold separately). Use it to steady your light source for UV photography. It's the ideal tool for Pass In-Pass Out usage at prisons and special events. Black anodized precision machined aluminum construction.

CATALOG NO.	DESCRIPTION	PRICE
CUV100T	Longwave UV Mini Light Source	
6762	Replacement Bulb, 4-watt (365nm)	
MLT100	Mini Light Tripod	



*No. MLT100  
(light not included)*

# Alternate Light Sources



*No. UVFT100 is used to detect invisible markings on currency.*

## UVFT100 SPECIFICATIONS:

- **Dimensions:**  
6.31"L x 1.6" dia  
(16cm x 4cm)
- **Weight:** 0.31lb. (143g) w/batteries
- **Construction:**  
Black, anodized aluminum
- **Batteries:** (2) CR123, 3V
- **LED:** One 1-watt longwave (395nm) UV LED; 50,000+ hrs.
- **Switch:** Push Button ON/OFF

## CUV100T SPECIFICATIONS:

- **Dimensions:**  
2"W x 6.25"H x .75"D  
(5.1cm x 15.9cm x 1.9cm)
- **Weight**  
(w/batteries): 6 oz. (200g)
- **Construction:**  
Rugged ABS plastic
- **Peak Wavelength:** 365nm
- **Bulb:** Longwave UV-A black light type (F4T5), 4-watt
- **Power Switch:**  
Slide Style
- **Power Source:**  
4 "AA" Alkaline Batteries, 1.5 volts (not included)

## Alternate Light Sources

### TYPICAL FORENSIC USES:

- *Physiological Fluids (semen, saliva, urine)*
- *Counterfeit Currency*
- *Fluorescent Latent Print Powders*
- *Invisible UV Markings*
- *Arson Debris (hydrocarbons)*
- *Cyanoacrylate enhancements (Ardrox)*

### 762ADC SPECIFICATIONS:

- **Case Dimensions:** 1.6875"W x 6.875"H x 1.875"D (4.3cm x 17.5cm x 4.8cm)
- **Weight (w/batteries):** 13.5 oz. (.4kg)
- **Construction:** Vinyl-clad aluminum/brushed nickeloid steel
- **Peak Wavelength:** 365nm
- **Bulb:** Longwave UV-A black light type, 4-watt
- **Power Switch:** Push-button, alternate action
- **High-Output Switch:** Push-button, momentary
- **Power Source:** 4 "AA" alkaline batteries, 1.5 volts; or 110 or 220V AC current

### UVP600 SPECIFICATIONS:

- **Case Dimensions:** 2.75"W x 9.75"H x 4"D (7cm x 24.8cm x 10.2cm)
- **Construction:** Vinyl-clad aluminum/brushed nickeloid steel
- **Filter Cover:** 0.031" (31 mil) steel w/ brushed nickel finish
- **Longwave Bulbs:** UV-A black light type, 6-watt, 365nm peak wavelength
- **Power Source:** 8-AA alkaline or 110V/220V AC
- **Switch:** Rocker (ON/OFF)

## Longwave Light Sources

### AC/DC FIELD AND LAB LAMP Longwave/High-Intensity Option

The ultraviolet field and lab lamp is practical, powerful and compact. This model features an AC/DC connector for use both in the lab and at the crime scene. The lamp has dual power levels for normal and high-intensity viewing.



Back



Front

CATALOG NO.	DESCRIPTION	PRICE
762ADC	AC/DC Field and Lab Lamp, Longwave, 4-watt, 110V	
762ADC220	AC/DC Field and Lab Lamp, Longwave, 4-watt, 220V	
6762	Replacement Bulb, Longwave (365nm), 4-watt	

### SIRCHIE® UV 6-WATT FORENSIC LIGHT SOURCE

These units are so light and compact, you can take them anywhere, even if you don't have an AC outlet available! The highly efficient, electronic ballast provides a constant high-output. The housing is constructed from vinyl-covered aluminum to withstand rugged use. The brushed steel cover ensures bulb protection at all times.

Light sources are offered in longwave (365nm) and a convenient AC Adapter is provided for 110V/220V operation. DC power is provided by 8-AA alkaline batteries (included). A blinking LED indicates lamp ON. Straps are mounted on both sides of the unit for left or right-handed use.



Back



Front

CATALOG NO.	DESCRIPTION	PRICE
UVP600	Sirchie UV Light, 6-watt, Longwave (365nm), 110V/220V AC	
UV9692	Replacement Bulb, 6-watt, Longwave (365nm)	



# Longwave and Shortwave Light Sources

## Alternate Light Sources

### SIRCHIE® UV FORENSIC LIGHT SOURCES

Certain forms of forensic evidence that are not excited under blue light require longwave UV light illumination to fluoresce. This is why many skilled examiners use longwave UV light in the initial examination of evidence. Items of forensic interest that can be detected using longwave UV light include: UV latent print powder, UV markings on currency, detection of certain controlled substances, physiological fluids, pass in-pass out applications and much more.

The UVP900 SIRCHIE UV Forensic Light Source features a dual-section longwave (365nm) 9-watt lamp and automatically turns on by lifting the head. It is capable of swinging 180°, easily accommodating a variety of usage situations. Its compact, light-weight design permits easy use and convenient storage.

Our Shortwave Forensic Light Source features a 13-Watt shortwave (254nm) germicidal lamp. ***Eye and skin protection must be used when utilizing any shortwave UV light source.***



Universal Adapter Available

*Preliminary examination of evidence should be conducted with the use of longwave UV light.*



#### UVP900 SPECIFICATIONS:

- **Construction:** Rugged ABS plastic
- **Lamp:** 9-watt, longwave (365nm)
- **Swinging Lamp Head:** 180 degrees
- **Internal ON/OFF Switch:** lamp illuminates when head is raised
- **Power:** 110V AC
- **Dimensions:** 10.5"H x 3.25"D x 3.4"W (27.67cm x 8.25cm x 8.63cm)
- **Weight:** 2.3 lbs. (1.04kg)

#### SKSUV13 SPECIFICATIONS:

- **Construction:** Rugged ABS plastic
- **UV Lamp:** 13-watt, 254nm, germicidal
- **Swinging Lamp Head:** 180 degrees
- **Internal ON/OFF Switch:** lamp illuminates when head is raised
- **Power:** 110V AC
- **Dimensions:** 10.5"H x 3.25"D x 3.4"W (27.67cm x 8.25cm x 8.63cm)
- **Weight:** 2.3 lbs. (1.04kg)

#### 790UV SPECIFICATIONS:

- **Longwave Filter Cover, Lamp Housing and End Cap Construction:** Nylon (proven thermal and mechanical properties)
- **Power Source:** 115V AC or 220V AC grounded
- **Lamp:** Mercury vapor w/internal ballast, 365nm UV
- **Lamp Rating:** 150 watts
- **Lamp Life:** ≈ 5,000 hours
- **Output:** 4,000  $\mu$  w/cm<sup>2</sup> at 15"
- **Indicator Light:** Neon type, diffused
- **Power Switch:** Heavy-duty rocker switch
- **Dimensions:** 10.25"L x 6.0625" dia. (26cm x 15.4cm)
- **Weight:** 3.87 lbs. (1.7kg)
- **Outer Case:** Aluminum with gloss-black epoxy paint
- **Power Cord:** 6ft. (1.82m)
- **Optional Carrying Case:** Injection-molded copolymer polypropylene; Dimensions: 21"W x 9"H x 16.5"D (53.3cm x 22.9cm x 41.9cm); Weight (w/unit): 9 lbs. (4.1kg)

CATALOG NO.	DESCRIPTION	PRICE
UVP900	Sirchie UV 9-watt Longwave Forensic Light Source (365nm), 110V AC	
11954	Replacement Bulb, 9-watt (365nm)	
SKSUV13	Sirchie UV 13-watt Shortwave Forensic Light Source (254nm), 110V AC	
SKSUV13B	Replacement Lamp, 13-watt (254nm)	

### THE TIGERUV™

A wide beam of 365nm UV light is useful to scan large areas for evidence at the crime scene. Evidence such as fibers, bone fragments, physiological fluids, and others can fluoresce in the presence of UV light, uncovering what was hidden otherwise.



CATALOG NO.	DESCRIPTION	PRICE
790UV	TIGERUV™ Light, 110V AC	
790UV220	TIGERUV™ Light, 220V AC	
790UVB	Replacement Bulb, 150-watt (365nm), 110V	
790UVB200	Replacement Bulb, 150-watt (365nm), 220V	
790UVC	Optional Carrying Case	

### 782ADC SPECIFICATIONS:

- **Case Dimensions:**  
2.625"W x 6.8125"H x 3.25"D  
(6.7cm x 17.3cm x 8.2cm)
- **Weight (w/batteries):** 2.15 lbs. (1kg)
- **Construction:** Vinyl-clad aluminum, black
- **Reflector:** Steel w/bright nickel finish
- **Shortwave Filter Cover and End Caps:**  
Steel w/brushed nickel finish
- **Bulb:** Shortwave...UV-C germicidal type, 4-watt, 254nm peak wavelength; Longwave...UV-A black light type, 4-watt, 365nm peak wavelength
- **Shortwave Filter:** Type U-325C UV band-pass filter; Dimensions: 1.5"W x 3"L x 3/16" to 1/4" thickness (3.8cm x 7.6cm x 5mm-6mm)
- **Power Source:** 4 alkaline "C" cells (1.5 volts); 110 or 220V AC
- **Control Panel:** Modular, all push-button control panel; power switch & SW/LW selector...push-button, alternate action; high-output switch...push-button, momentary action

## Longwave & Dual-Wavelength Light Sources

### AC/DC TIGER TWIN UV LIGHT SOURCE *Longwave and Shortwave*

This dual band, AC/DC powered ultraviolet light source features rear panel lights (LED) which indicate the band selected—shortwave (254nm) or longwave (365nm) for added safety. The unit is ideal for lab or field use. The unit comes with AC adapter. *Batteries are not included.*



CATALOG NO.	DESCRIPTION	PRICE
782ADC	AC/DC Tiger Twin UV Light(LW/SW), 110V	
782ADC220	AC/DC Tiger Twin UV Light(LW/SW), 220V	
6762	Replacement Bulb, 4-watt, Longwave (365nm)	
6247	Replacement Bulb, 4-watt, Shortwave (254nm)	

### UVP120DW SPECIFICATIONS:

- **Case Dimensions:**  
6.5"W x 9.75"H x 4"D  
(16.5cm x 24.8cm x 10.2cm)
- **Construction:** Vinyl-clad aluminum, black
- **Filter Cover:** Steel w/brushed nickel finish
- **Shortwave Bulbs:** UV-C germicidal type, 6-watt, 254nm peak wavelength;
- **Longwave Bulbs:** UV-A black light type, 6-watt, 365nm peak wavelength
- **Shortwave Filter:** Type U-325C UV band-pass filter; Dimensions: 1.31"W x 3.96"L (3.3cm x 10cm) x 4-5mm thick
- **Power Source:** 16-AA alkaline (not included) or 110V/220V AC
- **Switches:** Rocker (ON/OFF)

### SIRCHIE® UV 6-WATT DUAL WAVELENGTH FORENSIC LIGHT

This dual band, AC/DC powered ultraviolet light source features two 6-watt lights—one shortwave (254nm) and one longwave (365nm), giving the unit the versatility for use in many situations where an alternate light source is needed. The unit comes with an AC adapter.



CATALOG NO.	DESCRIPTION	PRICE
UVP120DW	Sirchie UV 6-watt, Dual Longwave/Shortwave, 110V/220V AC	
UV9692	Replacement Bulb, 6-watt, Longwave (365nm)	
SW969B	Replacement Bulb, 6-watt, Shortwave (254nm)	



## SIRCHIE® UV 6-WATT SHORTWAVE FORENSIC LIGHT SOURCE

These units are so light and compact, you can take them anywhere, even if you don't have an AC outlet available! The highly efficient electronic ballast provides a constant high-output. The housing is constructed from vinyl-covered aluminum to withstand rugged use. The brushed steel cover ensures bulb protection at all times.

Light sources are offered in a shortwave (254nm) version. A convenient AC Adapter is provided for 110V/220V operation. DC power is afforded by 8-AA alkaline batteries (included). A blinking LED indicates lamp ON. Straps are mounted on both sides of the unit for left or right-handed use.



CATALOG NO.	DESCRIPTION	PRICE
UVP600ST	Sirchie UV Light w/tripod mount, 6-watt, Shortwave (254nm), 110V/220V AC	
SW969B	Replacement Bulb, 6-watt, Shortwave (254nm)	

## SIRCHIE® UV 6/12-WATT DUAL BULB SHORTWAVE FORENSIC LIGHT SOURCE

The 6/12-watt dual bulb system of these portable AC/DC units provides twice the light output for forensic usage. The housing is constructed from vinyl-covered aluminum to withstand rugged use. The brushed steel cover ensures bulb protection at all times.

Each lamp is individually controlled for single or dual bulb use (blinking LED indicates lamp ON). A power selector switch is located on the side of each unit for AC/DC use. An AC Adapter is provided for 110V/220V operation and DC power is afforded by 16-AA alkaline batteries (included).



CATALOG NO.	DESCRIPTION	PRICE
UVP120ST	Sirchie UV 6-watt, Dual Shortwave (254nm) w/tripod mount, 110V/220V AC	
SW969B	Replacement Bulb, Shortwave, 6-watt (254nm)	

## UVP600ST SPECIFICATIONS:

- **Case Dimensions:** 2.75"W x 9.75"H x 4"D (7cm x 24.8cm x 10.2cm)
- **Construction:** Vinyl-clad aluminum, black
- **Filter Cover:** Steel w/brushed nickel finish
- **Shortwave Bulbs:** UV-C germicidal type, 6-watt, 254nm peak wavelength;
- **Shortwave Filter:** Type U-325C UV band-pass filter; Dimensions: 1.31"W x 3.96"L (3.3cm x 10cm) x 4-5mm thick
- **Power Source:** 8-AA alkaline or 110V/220V AC
- **Switch:** Rocker (ON/OFF)

## UVP120ST SPECIFICATIONS:

- **Case Dimensions:** 6.5"W x 9.75"H x 4"D (16.5cm x 24.8cm x 10.2cm)
- **Construction:** Vinyl-clad aluminum, black
- **Filter Cover:** Steel w/brushed nickel finish
- **Shortwave Bulbs:** UV-C germicidal type, 6-watt, 254nm peak wavelength;
- **Shortwave Filter:** Type U-325C UV band-pass filter; Dimensions: 1.31"W x 3.96"L (3.3cm x 10cm) x 4-5mm thick
- **Power Source:** 16-AA alkaline or 110V/220V AC
- **Switches:** Rocker (ON/OFF)



Use barrier filter glasses and goggles to view evidence lit with forensic alternate light sources.

## Barrier Filter Glasses & Goggles

### BLUEMAXX™ BARRIER FILTER GLASSES/GOGGLES

Polycarbonate barrier filter glasses and goggles offer convenient viewing for crime scene searches and photography when using the BLUEMAXX™ for illumination. Goggles may be worn over corrective eyewear.



No. BMS300



No. BMS400

CATALOG NO.	DESCRIPTION	PRICE
BMS300	Barrier Filter Goggles with Case	
BMS400	Barrier Filter Glasses	

### SPORT FRAME BARRIER FILTER GLASSES

These new barrier filter glasses feature stylish sport frames and come in the three standard barrier filter colors.



CATALOG NO.	DESCRIPTION	PRICE
BFR10	Barrier Filter Glasses, Sport Frame, Red	
BFN10	Barrier Filter Glasses, Sport Frame, Orange	
BFY10	Barrier Filter Glasses, Sport Frame, Yellow	



No.'s BFR30, BFN30 & BFY30  
Barrier Filter Goggles w/elastic strap

### BARRIER FILTER GLASSES (OVER GLASSES)

These new barrier filter glasses are designed to fit over the crime scene tech's eyeglasses and come in the three standard barrier filter colors.



CATALOG NO.	DESCRIPTION	PRICE
BFR20	Barrier Filter Glasses, Over Glasses, Red	
BFN20	Barrier Filter Glasses, Over Glasses, Orange	
BFY20	Barrier Filter Glasses, Over Glasses, Yellow	

### BARRIER FILTER GOGGLES W/ELASTIC STRAP

These new barrier filter goggles are designed to fit over the crime scene tech's eyeglasses, feature an elastic strap and come in the three standard barrier filter colors.

CATALOG NO.	DESCRIPTION	PRICE
BFR30	Barrier Filter Goggles w/Elastic Strap, Red	
BFN30	Barrier Filter Goggles w/Elastic Strap, Orange	
BFY30	Barrier Filter Goggles w/Elastic Strap, Yellow	

**SHOP  
ONLINE**  
[www.sirchie.com](http://www.sirchie.com)



# Camera Lens Barrier Filters

## CAMERA LENS BARRIER FILTERS

These filters are used in conjunction with alternate light sources to enhance items of interest and eliminate backgrounds when shooting photos of evidence. Filters are available in three colors (Orange, Yellow, Red) and all the most popular lens thread sizes. Also available are filter kits that include one filter of each color in your choice of thread size.



CATALOG NO.	DESCRIPTION	PRICE
CFY49	Camera Lens Barrier Filter, Yellow, 49mm	
CFY52	Yellow, 52mm	
CFY55	Yellow, 55mm	
CFY58	Yellow, 58mm	
CFY62	Yellow, 62mm	
CFY67	Yellow, 67mm	
CFY72	Yellow, 72mm	
CFY77	Yellow, 77mm	
CFY82	Yellow, 82mm	
CFN49	Camera Lens Barrier Filter, Orange, 49mm	
CFN52	Orange, 52mm	
CFN55	Orange, 55mm	
CFN58	Orange, 58mm	
CFN62	Orange, 62mm	
CFN67	Orange, 67mm	
CFN72	Orange, 72mm	
CFN77	Orange, 77mm	
CFN82	Orange, 82mm	
CFR49	Camera Lens Barrier Filter, Red, 49mm	
CFR52	Red, 52mm	
CFR55	Red, 55mm	
CFR58	Red, 58mm	
CFR62	Red, 62mm	
CFR67	Red, 67mm	
CFR72	Red, 72mm	
CFR77	Red, 77mm	
CFR82	Red, 82mm	
AFK49	Camera Lens Barrier Filter Kit (1 ea. Yellow, Orange, Red), 49mm	
AFK52	(1 ea. Yellow, Orange, Red), 52mm	
AFK55	(1 ea. Yellow, Orange, Red), 55mm	
AFK58	(1 ea. Yellow, Orange, Red), 58mm	
AFK62	(1 ea. Yellow, Orange, Red), 62mm	
AFK67	(1 ea. Yellow, Orange, Red), 67mm	
AFK72	(1 ea. Yellow, Orange, Red), 72mm	
AFK77	(1 ea. Yellow, Orange, Red), 77mm	
AFK82	(1 ea. Yellow, Orange, Red), 82mm	

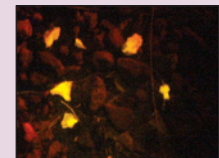
Phone: +1.919.554.2244 Fax: +1.919.554.2266

## Alternate Light Sources

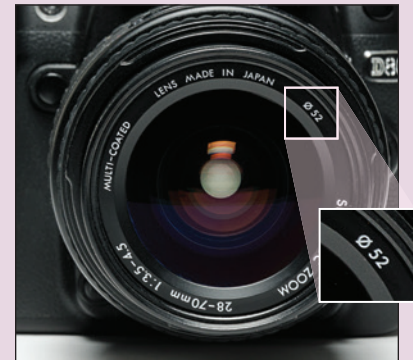
Use camera lens barrier filters in conjunction with alternate light sources to enhance items of forensic interest for photography.



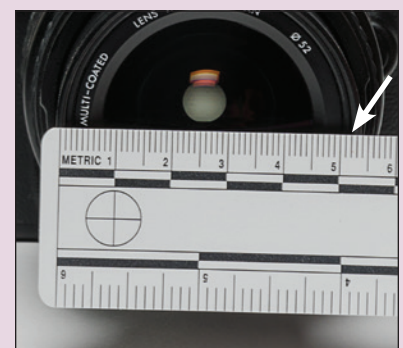
Area of interest illuminated with normal light.



Same area of interest illuminated with blue (455nm) light and photographed using an orange barrier filter. Bone fragments are now clearly seen.



To determine the filter thread size of your camera lens look for the symbol in the photo above. If this symbol cannot be found, see measuring instructions below.



**Measuring filter thread size:** Filter threads are measured in millimeters, so use a metric ruler. Place the ruler across the diameter (widest part) of the camera lens as illustrated starting from inner edge of the filter threads and measure to the opposite side.



### CAUTION:

Shortwave UV light sources emit harmful radiation. Use of these devices requires proper eye and skin protection as afforded by the UV Protection Products shown on this page.

## UV Protection Products

### UV PROTECTIVE SPECTACLES

Top and side shield design provides full protection from harmful shortwave UV radiation emitted from UV and mercury lamps. Polycarbonate construction is impact-resistant.



### UV PROTECTIVE GOGGLES

Constructed of specially formulated plastic which blocks UV transmission over all UV wavelengths. Provides optimum contrast in viewing, and lessened eye fatigue. A lightweight design with flexible rubber trim fits comfortably on the face—even over prescription glasses.



CATALOG NO.	DESCRIPTION	PRICE
797GV	UV Protective Spectacles	
798GV	UV Protective Goggles	

### UV PROTECTIVE FACE SHIELD

Specially designed to protect the entire face from hazardous shortwave UV light while completely eliminating "blue haze" interference normally associated with long wavelengths. Dimensions: 8.25"H x 17" dia. (20.9cm x 43.2cm).



### UV PROTECTIVE FACE SHIELD WITH SHROUD

This specially designed shield offers complete head and neck UV protection. The face shield places an impenetrable barrier between the wearer and the UV source. The dense cotton weave shroud completes the barrier and is quickly removed or attached with Velcro®. The face shield is fashioned from tough, impact-resistant polycarbonate material and features a sturdy, adjustable head mount. The 798GVH was specifically designed for use with high-intensity shortwave UV sources.



CATALOG NO.	DESCRIPTION	PRICE
799UV	UV Protective Face Shield	
798GVH	UV Protective Face Shield w/Shroud	

**SHOP  
ONLINE**  
www.sirchie.com

