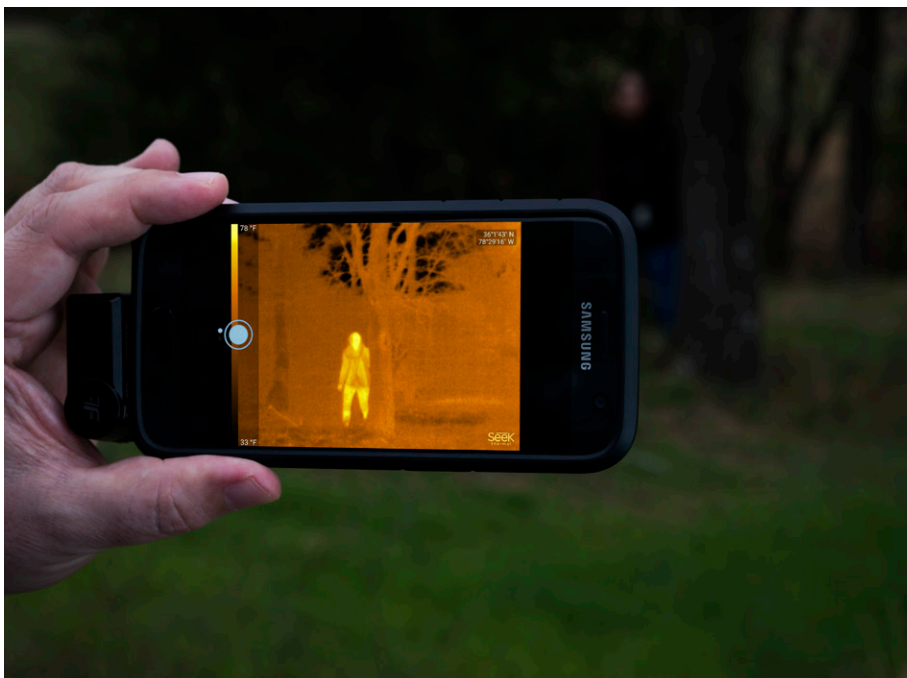




Thermal Imaging Cameras

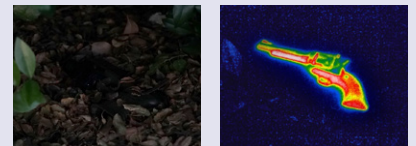
Thermal Imaging Cameras designed by Seek Thermal let you detect and visualize energy through temperature differential solutions, sensors and devices. Our unwavering goal is to make your day easier and with this technology, we're making thermal imaging an accessible, everyday tool so you can do your job faster, smarter and safer.

We have handheld devices and compact versions that attach to your smart Apple or Android device. We have rugged handheld devices and compact versions that attach to your Apple or Android device. The Thermal Monocle gives you military-proven surveillance technology that's affordable.

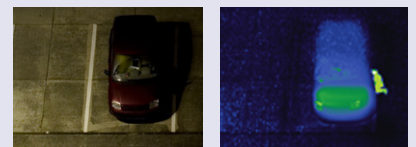


Thermal Imaging Applications

Evidence Recovery



Surveillance



Accident Investigation



Officer Awareness



Handheld Devices

The most advanced handheld thermal imaging cameras on the market today offer powerful detection in an easy to use, rugged package. Self-contained with high-performance thermal sensors, the Reveal handhelds are perfect if you do not want to connect a device to your phone. Each Reveal handheld imager also has a built-in 300 lumen LED flashlight.



RevealPRO

The RevealPRO is the most powerful and versatile handheld version with a range from 6 inches to 1,800 feet and the most powerful sensor.

Features include:

- Adjustable Emissivity and Radiometric Files
- Easily documents and saves thermal images directly to the 4GB internal hard drive or a MicroSD card
- A frame rate greater than 15 frames per second for a smooth image display while moving and scanning
- 32 degrees field of view
- Long-lasting rechargeable battery of up to 5 hours

A <9 Hz version is available for applicable countries.



RevealPRO features a 300 lumen LED flashlight

No. STRQAAAX **RevealPRO (Fast Frame), >15 Hz frame rate**

No. STRQAAA **RevealPRO, <9 Hz frame rate**

RevealFirePRO

Highly durable and easy to use, Reveal FirePRO combines a high-performance 320 x 240 thermal sensor with intuitive software to help you fight fires smarter and safer.

Features include:

- 320 x 240 High-Resolution Thermal Sensor
- Waterproof Design
- Wide, 32-Degree Field of View
- Long-Lasting Rechargeable Battery
- 3 Modes. Purpose-Built for First Responders



No. STFIRE01

RevealFirePRO

Reveal XR (Long Range)

The Reveal Long Range gives you up to 900 ft of detection distance at a frame rate of 15 frames/second for smooth scanning; ideal for outdoor applications. Its other features are:

- A field of view of 20 degrees
- Long-lasting rechargeable battery of up to 10 hours.
- Document your inspection: save thermal images directly to the included MicroSD card



A <9 Hz version is available for applicable countries. Available in black or camo



Reveal XR features a 300 lumen LED flashlight

No. STRTABAX **Reveal XR (Long Range), Fast Frame, black**

No. STRTACAX **Reveal XR (Long Range), Fast Frame, camo**

No. STRTABA **Reveal XR (Long Range), black**

No. STRTACA **Reveal XR (Long Range), camo**

Reveal WV (Wide View)

The Reveal Wide View has 36 degrees field of view with a frame rate of 15 frames/second, perfect for scanning an area quickly. With this device, you'll have:

- Detection distance of up to 500 ft
- Long-lasting rechargeable battery of up to 10 hours
- Document your inspection: save thermal images directly to the included MicroSD card

A <9 Hz version is available for applicable countries. Available in blue



Reveal WV features a 300 lumen LED flashlight

No. STRWAAAX **Reveal WV (Wide View), fast frame (>15 Hz)**

No. STRWAAA **Reveal WV (Wide View), (<9 Hz)**

Smart Device Camera Attachment

The Compact series offers powerful thermal imaging capability controlled through an app on your Apple or Android device. Search and capture images easily and store on your mobile device.



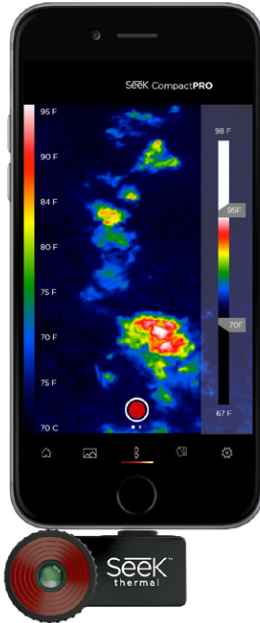
CompactPRO

The most powerful and versatile option, the CompactPRO, gives you a combination of long range and wide field of view with the most powerful sensor available.

Features include:

- Adjustable emissivity and radiometric files
- Ability to focus your lens for quick identification
- Uses the power and display of your smartphone
- A detection distance of up to 1800 ft
- Possible unlimited storage through your phone
- A thermal sensor of 320 x 240

A <9 Hz version is available for applicable countries.



Available for top iPhone and Android models

No. STLQAAAX	CompactPRO, fast frame (for iPhone)
No. STLQAAA	CompactPRO, <9 Hz (for iPhone)
No. STUQAAAX	CompactPRO, fast frame (for Android)
No. STUQAAA	CompactPRO, <9 Hz (for Android)

Compact XR (Long Range)

With up to 1,800 ft of detection distance and a 20 degree field of view, you'll have an ideal device for outdoor applications. Additional features are a thermal sensor of 206 x 156.



Available for top iPhone and Android models



No. STLTAAX	Compact XR (Long Range), for iPhone
No. STUTAAX	Compact XR (Long Range), for Android

Compact WV (Wide View)

You'll be able to quickly scan up to a 36 degree field of view with a detection distance of 1,000 feet. Additional features are a thermal sensor of 206 x 156.



Available for top iPhone and Android models



No. STLWAAA	Compact WV (Wide View), for iPhone
No. STUWAAA	Compact WV (Wide View), for Android

Thermal Imaging Camera Comparison Chart

Domestic Market (versions for the international market also available)

	Compact PRO -Fast Frame- STLQAAAX (iPhone) STUQAAAX (Android)	Compact XR (Long Range) STLTAAA (iPhone) STUTAAA (Android)	Compact WV (Wide View) STLWAAA (iPhone) STUWAAA (Android)	RevealPRO -Fast Frame- STRQAAAX	Reveal XR (Long Range) -Fast Frame- STRTABAX (black) STRTACAX (camo)	Reveal WV (Wide View) -Fast Frame- STRWAAAX
Detection Distance	1,800 ft	1,800 ft	1,000 ft	1,800 ft	900 ft	500 ft
Frame Rate	>15 Hz	<9 Hz	<9 Hz	>15 Hz	>15 Hz	>15 Hz
Sensor Resolution	320 x 240	206 x 156	206 x 156	320 x 240	206 x 156	206 x 156
Field of View	32 degrees	20 degrees	36 degrees	32 degrees	20 degrees	36 degrees
Color Palettes	9	9	9	9	7	7
Temp. Display	Fahrenheit, Celsius, Kelvin	Fahrenheit, Celsius	Fahrenheit, Celsius	Fahrenheit, Celsius, Kelvin	Fahrenheit, Celsius	Fahrenheit, Celsius
Storage Media	on phone	on phone	on phone	4GB internal drive	MicroSD card	MicroSD card
Battery Life	powered by phone	powered by phone	powered by phone	5 hrs on charge	10 hrs on charge	10 hrs on charge



Defender Handheld Thermal Monocular

The Seek Thermal Monocular was specifically designed for Law Enforcement and Border Patrol Professionals. Highly durable and easy to use, the Thermal Monocular combines a high-performance 206 x 156 thermal sensor with a powerful lens, each optimized for long range surveillance. Built with a rugged waterproof rating, the Thermal Monocular is fit to withstand the elements.

Thermal imaging helps you safeguard land & borders, quickly clear a room, find discarded evidence at night, and track perpetrators with a flashlight. Even the most elusive suspects can't hide their heat signature.

Key Features

- **206 x 106 Thermal Sensor** Excellent image clarity and sensitivity with over 32,000 pixels
- **Long Range Detection** Detect a human at long distances in complete darkness
- **10 Hour Runtime** Long-lasting CR123 battery included
- **Waterproof design** Designed for the outdoors with IP67 rating
- **Lightweight & Easy-to-use** Intuitive 3 button controls provide easy operation of your camera
- **Removable Eyepiece** Easily convert from a monocular to site with removable eyepiece



Helmet mount available. Call 800.356.7311 for details.

No. STMON01 [Defender Handheld Thermal Monocular](#)