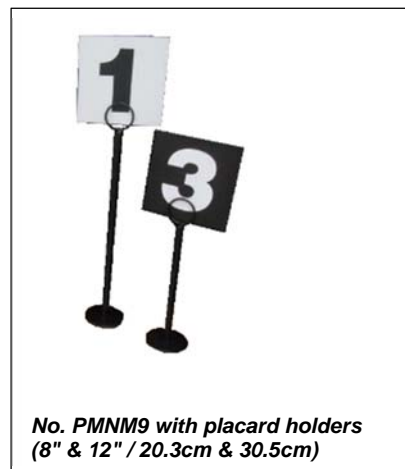


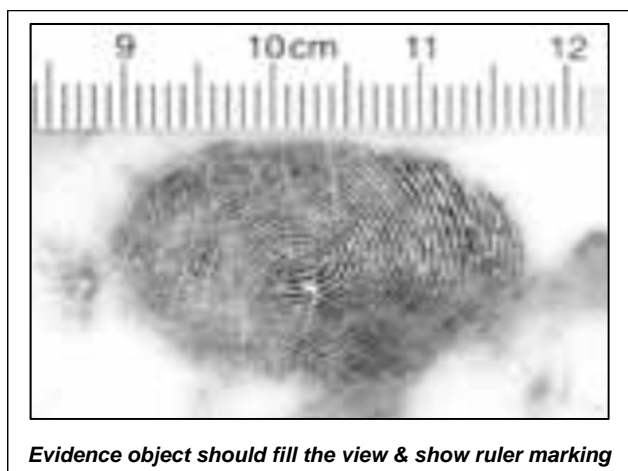
style numbers and indicators are free-standing and are placed in the scene to indicate the location of various kinds of evidence.

The photo evidence placards are used in conjunction with one of the placard holders shown. The holders have a split ring on top to permit insertion of the appropriate number placard and a weighted base.



PHOTOGRAPHY CONSIDERATIONS

When photographing small items of evidence such as fingerprints, blood spatters, broken glass, etc., the camera should be placed in the Macro ("close-up") mode (refer to your camera Operator's Manual for instructions regarding setting it in Macro mode). Zoom the lens into the scene until the evidence object fills the view (example below). Be certain to include a scale in the scene. Use either the No. PPS400 White/Black or No. PPS402 White/Blue Photo Evidence Scales.



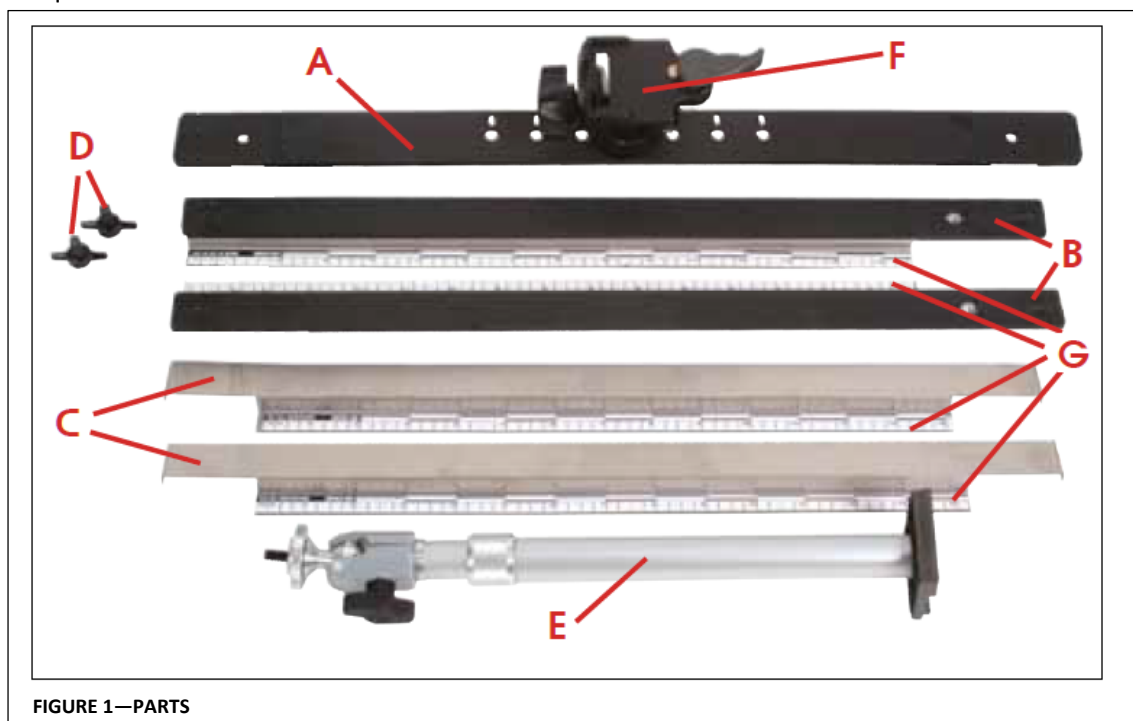
USING THE UNIVERSAL EVIDENCE PHOTO STAND

The Universal Evidence Photo Stand was developed primarily for the recovery of impression evidence, but it may serve to assist in recording many other forms of physical evidence as well. The unit can be assembled and disassembled in seconds and is ideal for use at the crime scene or in the crime laboratory. The stand is compatible with most light-weight digital cameras.

Unpacking/Set-up

Upon receipt of the unit, carefully inspect the shipment for completeness and any transit damage. These components are shown on the top of the next page. Report any damage to the delivering carrier and notify the Customer Service office at the factory.

To avoid any possible damage to the impression being photographed, assemble the unit some distance away prior to placement. Note: Some cameras have a tripod mounting that is not directly in line with the lens. Additional mounting holes have been provided on the Main Frame Support (A) that permit repositioning the Tripod Extension Arm Mount (F) on the main frame. Remove the screw securing the mount and reposition it as required.



- | | | |
|--------------------------------|---------------------------------|--|
| 1- (A) Main Frame Support | 2- (B) Side Supports | 2- (C) Adjustable Scale Supports |
| 2- (D) Thumbscrews | 1- (E) Adjustable Extension Arm | 1- (F) Tripod-type Extension Arm Mount |
| 1- (G) 4 White Magnetic Scales | | |

Controls / Operation

1. Attach the two Side Supports (B) to the Main Frame Support (A) using the Thumbscrews (D). Do not over-tighten. Note that the Main Frame Support is notched where the Side Supports are attached (Fig. 2).
2. Attach the camera to be used to the threaded 1/4-20 screw on top of the Adjustable Extension Arm (E). Use the threaded lock nut to secure the position of the camera.
3. Place the base of the extension arm in the tripod-type mount, snap it in to lock it in position (Fig. 3).
4. Place the assembled unit over the impression to be recorded. (Fig. 4).



FIGURE 2



FIGURE 3

5. Extend the Extension arm to a point where the camera lens is directly over the center of the evidence. Lock the extension arm in place using the thumbscrew at the base swivel and the knurled locking collar.
6. Position the camera so that the lens is at a 90° angle above the evidence.
7. Position the Adjustable Scale Supports as needed. Note: When using a flash, use one adjustable scale on the side opposite the flash in order to avoid introducing a shadow from the scale.
8. Adjust the zoom on the camera so that at least two of the photo scales are visible. Where possible, avoid using too much of the wide-angle lens setting as this will cause perspective distortion.



FIGURE 4

FLASH PHOTOGRAPHY

In most instances, it will be necessary to use auxiliary lighting (i.e., user-supplied electronic flash) when recording three dimensional evidence such as footprints and tire tracks. A flash provides more control over the lighting and will create the necessary shadow detail. A minimum of three photos should be taken with the flash held at different positions as shown above. This will assure sufficient shadow detail in the

impression (see Figs. 5A - 5C below). When photographing two-dimensional evidence such as dust prints, one or two photos may be adequate. The flash should be held 3 to 4 feet (0.91 to 1.22 meter) from the impression and at an angle of 15° to 30° above the surface—depending upon the depth of the impression.



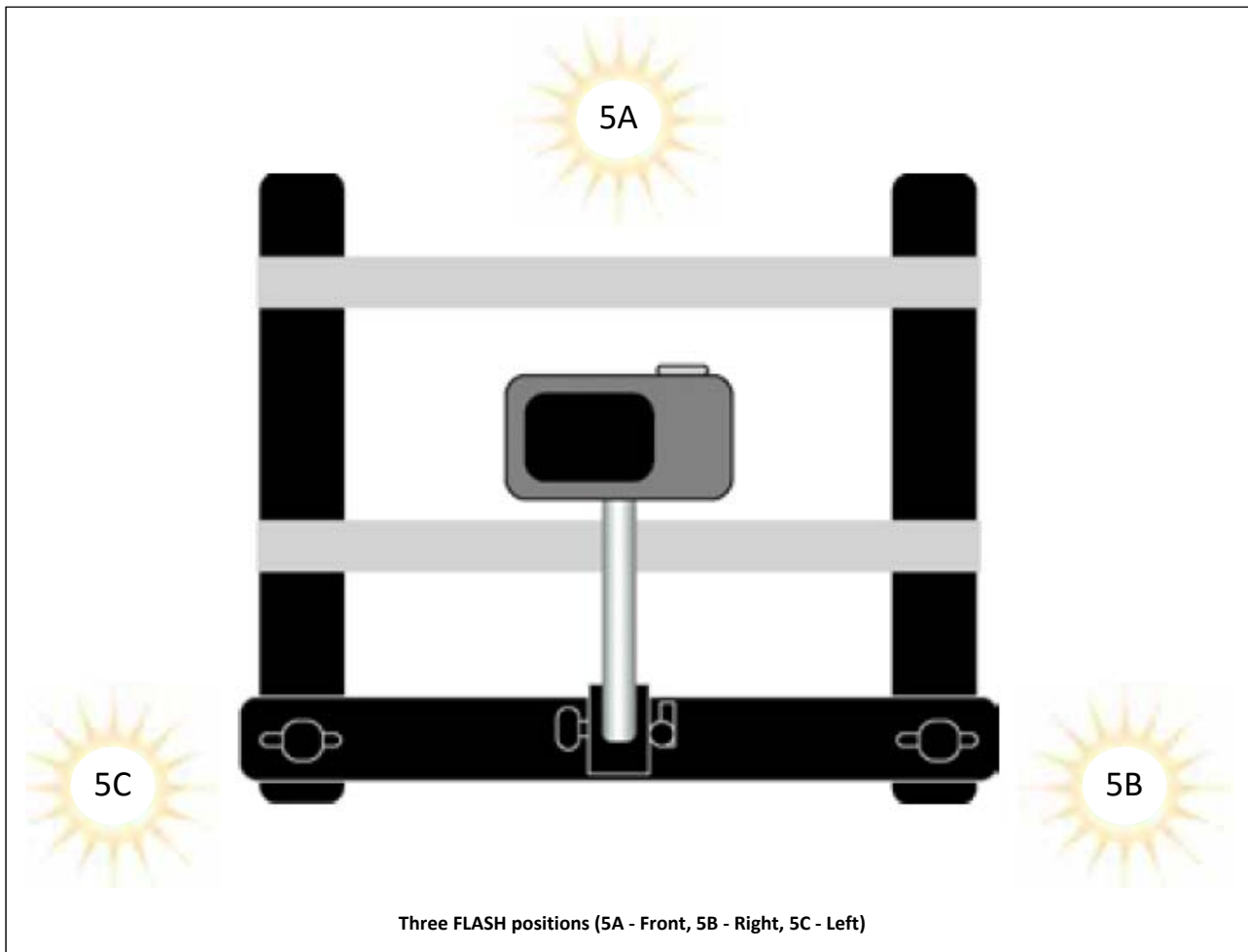
FIG. 5A—Flash from front.



FIG. 5B—Flash from right.



FIG. 5C—Flash from left.



DEPS100M CONTENTS:

1 - 7660APL0047	Digital Crime/Accident Scene Camera - Canon PowerShot G1-X Mark II
1 - 7725OPT0131	Canon Conversion Lens Adapter FA-DC58E
1 - 7725OFF0017	SD Flash Memory Card 32GB
1 - 7640WIR0197	Cable USB Type A (M) to USB Type B Mini (M)
1 - 7520HDW0230	Cable Tie
1 - UPS100M	Evidence Photo Stand w/Metric Scales
1 - PEN15V	Crime/Accident Photo Evidence Numbers 1 - 15
1 - PDN17V	Photo Direction Indicators
1 - PMNM9	Reversible Number Placards Numbers 1 - 48
1 - 7520HDW0290	8" (31cm) Table Stand Sign Holder, black
1 - 7520HDW0291	12" (33.7cm) Table Stand Sign Holder, black
PK - PPS400	6" (15.2cm) Photo Evidence Scales (black on white) 10 /PK
PK - PPS402	6" (15.2cm) Photo Evidence Scales (white on blue), 10 /PK
1 - 0316SU0087	Molded Copolymer Carrying Case w/precut molded insert Dimensions: 27.5" x 16" x 10" (69.9 x 40.6 x 25.5cm) Outside Dimensions

DEPS100 CONTENTS:

1 - 7660APL0047	Digital Crime/Accident Scene Camera - Canon PowerShot G1-X Mark II
1 - 7725OPT0131	Canon Conversion Lens Adapter FA-DC58E
1 - 7725OFF0017	SD Flash Memory Card 32GB
1 - 7640WIR0197	Cable USB Type A (M) to USB Type B Mini (M)
1 - 7520HDW0230	Cable Tie
1 - UPS100	Evidence Photo Stand w/English Scales
1 - PEN15V	Crime/Accident Photo Evidence Numbers 1 - 15
1 - PDN17V	Photo Direction Indicators
1 - PMNM9	Reversible Number Placards Numbers 1 - 48
1 - 7520HDW0290	8" (31cm) Table Stand Sign Holder, black
1 - 7520HDW0291	12" (33.7cm) Table Stand Sign Holder, black
PK - PPS400	6" (15.2cm) Photo Evidence Scales (black on white) 10 /PK
PK - PPS402	6" (15.2cm) Photo Evidence Scales (white on blue), 10 /PK
1 - 0316SU0087	Molded Copolymer Carrying Case w/precut molded insert Dimensions: 27.5" x 16" x 10" (69.9 x 40.6 x 25.5cm) Outside Dimensions