

---

## TECHNICAL INFORMATION

### EZ-DRY™ Swab Box Kit Catalog No. SB1000

---

#### INTRODUCTION

The SIRCHIE EZ-DRY™ swab box is the best way to collect, package, label and seal cotton swabs used to collect biological evidence—providing a secure way to dry swabs without the possibility of sample switching or secondary contamination, while also providing a way to maintain a continuous chain of possession. Room temperature is sufficient to dry swabs with EZ-DRY™—no freezer or swab dryer is needed.

#### DIRECTIONS FOR USE:

1. Collect evidence with a dry swab or lightly moisten with sterile water provided.



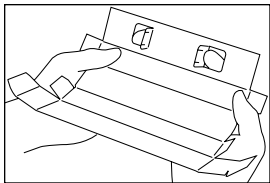


FIGURE 1

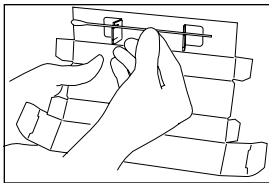


FIGURE 2

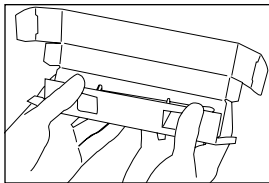


FIGURE 3

2. Place swab(s) into the pop-up swab-drying holders (Figs. 1-2).  
*NOTE: Swabs collected from different locations should be placed in different boxes.*
3. Fold box as indicated in Figures 3-5.
4. Fill out information needed on Evidence/Integrity Labels.
5. Apply label to box overlapping ends to form an integrity seal.
6. Apply biohazard label in space indicated.
7. Sealed box should be stored in a dry, secure area.

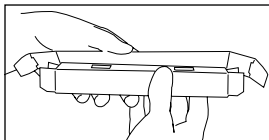


FIGURE 4

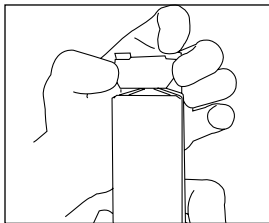


FIGURE 5

**SB1000 CONTENTS:**

- |  |                                     |
|--|-------------------------------------|
| 1- SB1001 Kit Envelope                 | 1- KCP247 Sterile Water, 3ml bottle |
| 5- KCP248 EZ-DRY™ Swab Boxes           | 5- SB102 Evidence/Integrity Seals   |
| 5- KCP160 Sterile Swabs<br>(pack of 2) | 5- KCP206 Biohazard Labels          |
|  | 1- Technical Information sheet      |