
TECHNICAL INFORMATION

SirchSTAND™ Forensic Photography Stand

Catalog No. PHTMX01

INTRODUCTION

Traditionally, a copy stand is used with a camera for the reproduction of images or documents. The set-up guarantees a 90 degree angle to the table surface, eliminating potential distortion caused by angled photography. It also allows the photographer to work hands free, staging the document or object with proper lighting. In forensics, copy stands are regularly used to photograph evidence, including latent fingerprints, processed documents, and cyanoacrylate fumed objects.

The SirchSTAND™ Forensic Photography Stand was created with forensic photography as the focus. The unit incorporates a series of ALS flashlights (white), UV (395nm), and blue (455nm) that can be utilized for a wide variety of



The SirchSTAND™ camera mount is compatible with most DSLR cameras (1/4" dia., 20 thread count) (camera not included)

evidence. It has an easy-to-use adjustable column, and a camera mount that can support from a simple digital point and shoot to a complex DSLR or SLR film camera. In addition, the metal base permits the use of FXMAG4 magnets to hold evidence in place. It's etched square cm grid eliminates the need for a scale in many cases. It is so simple to use, and extremely versatile, all in an easy-to-transport design.

HAZARDS/SAFETY INFO

Ultraviolet light can be damaging to the eyes. Do not look directly into, or point the UV light directly at a person's eyes. To prevent unnecessary damage, wear UV eye protection when operating the UV lights.

ASSEMBLY

1. Place table on a flat surface.
2. Loosen hex head bolts with enclosed hex wrench.
3. Place column over bolt heads and slide into place.
4. Tighten bolts using hex wrench.



OPERATION

Flashlights:

1. Place 2 CR123 batteries (included) in each flashlight.
2. Operate flashlight by pressing the black rubber on/off button.
3. Flashlight body/handle can be snapped into any of the clip heads on the flexible arms, including the 4 table arms, and the 2 arms on the camera mount.

Copy Stand:

1. Mount the camera with the standard tripod mounting screw. *(Note: Make sure that the camera lens is centered with the column. There is room to adjust the mount screw side to side).*
2. To raise or lower the camera, press the lever and slide the camera mount along the column's length.



Adjustable Mounting Screw



Camera Mount Lever

Utilizing the Lights:

The SirchSTAND™ provides three different light sources for different types of evidence.

LIGHT SOURCE	USAGE
White	Standard photography, oblique lighting for indented writing or casting detail
UV	Physiological fluids, fluorescent powders, fluorescent staining agents (i.e. ardrox, basic yellow)
Blue	Used with an orange filter (<530nm) to eliminate backgrounds for physiological fluids, fluorescent powder, fluorescent staining agents, DFO processed documents

The lights can be mounted in any of the six positions provided. The table mounts are useful for general illumination as well as oblique lighting. The clips on the camera mount can be utilized when the object to be photographed is taller than table mounted lights, allowing proper illumination with the camera raised higher.

Note: For large objects, the flexible arms can be removed from the table to allow the object to exceed the table edges. Simply unscrew the arms from the base plate.

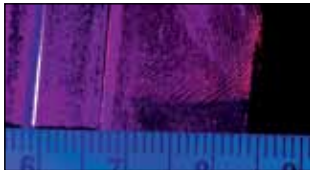


Maintenance: Simply wipe down with a clean damp cloth. No other maintenance is necessary.

USAGE SHOTS



The UV light (395nm) in use with a DSLR with macro lens can be used for close-up photos of fingerprints developed with fluorescent powder (camera not included).



Oblique white light used with a DSLR with macro lens for close-up photos of indented writing (camera not included).



REFERENCES:

Halla, Susan and Ryan M. Rezelle. "Sharpening the Focus: Forensic Photography and Its Impact on Facility Design", Forensic Magazine, Dec. 2010/Jan. 2011 <http://www.forensicmag.com/article/sharpening-focus-forensic-photography-and-its-impact-facility-design?page=0,0>, 15 Sept. 2011

International Association of Identification SWIGIT, "General Guidelines for Capturing Latent Impressions Using a Digital Camera", Version 1.3 2010.06.11. http://www.theiai.org/guidelines/swigit/guidelines/section_8_v1-3.pdf, 15 Sept. 2011

SPECIFICATIONS:

Base:

- 19.25" wide x 18" (48.89cm x 45.73cm) deep
- Matte black powder coated steel
- Laser etched with 28 x 30 cm grid

Column:

- 36" tall (working range 3' - 30" above base)
- Sliding steel spring with trigger release
- Ruled (inches and cm)

Forensic Lights:

- 2 - White LED, black anodized aluminum
- 2 - 395nm UV LED, black anodized aluminum
- 2 - 455nm Blue LED, black anodized aluminum

Flexible Arms:

- 4 - vinyl coated flexible steel arms w/C-clips, table mountable
- 2 - vinyl coated flexible steel arms w/C-clips, attached to camera mount

Weight: 22 lb. (9.979kg)

PHTMX01 INCLUDES:

- 1- SirchSTAND™ Forensic Photography Stand
- 2- White LED, black anodized aluminum
- 2- 395nm UV LED, black anodized aluminum
- 2- 455nm LED, black anodized aluminum
- 12- CR123 Batteries
- 1- PGE4 Light Absorbing Material, 18" x 13.5" (45.7cm x 34.3cm), 4 ea.
- 1- FXMAG4 Magnets
- 1- MR400 Magnetic Evidence Scales, 10 ea.