
TECHNICAL INFORMATION

KRIMESITE™ Camera Adapter for Canon G10 and G11 Catalog No. KSSAG10

INTRODUCTION

In order to capture images from the KRIMESITE scope using the Canon G10 model camera, a modified adapter must be used. This adapter utilizes the attachment for the standard Canon filter holder, but incorporates a custom extension manufactured by SIRCHIE.

LIST OF EQUIPMENT

- Canon LA-DC58K - G10 conversion adapter (bottom only)
- Custom machined Delrin KRIMESITE adapter
- Canon G10 camera (not included)

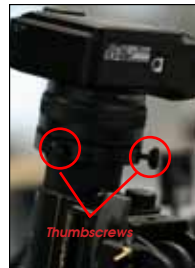
INSTALLATION:

1. Remove ring from camera lens by pushing the release button on the bottom right corner below the lens and twisting counter-clockwise.
2. Place the white dot of the adapter at the 3 clock position, turn



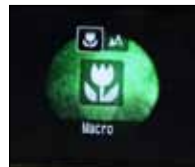
adapter clockwise until it clicks. The white dot on the adapter should align with the release button.

3. Attach the custom adapter by screwing onto the Canon adapter, clockwise.

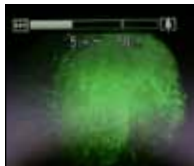


OPERATION

1. Set KRIMESITE™ scope in position and focus eyepiece and 60mm lens so that image to be captured is in focus.
2. Place the camera adapter onto the eyepiece, and tighten the three thumb screws to hold the camera and adapter in place.
3. Turn camera ON.
4. Place the camera in MACRO mode. Press the FLOWER on the FUNC SET control and select the MACRO icon.
5. Turn the flash off. Press the FLASH on the FUNC SET control and select the FLASH OFF icon.



- The BEST photo to capture the whole view should be taken at 5cm focal length.
- Push the lens zoom control to the right until the bar displays 5cm-50cm.
- Take the photograph.
- For a closer view, press the lens zoom control to the right until 10cm-50cm appears. (**Warning:** Exceeding 10cm goes beyond the limit of the adapter. This will cause the camera to stop and shut down to protect the lens. This will not damage the camera, but will require the user to turn the camera on and redo all of the previous settings.)



MAINTENANCE

- There is no standard maintenance required for the adapter. If the adapter is damaged, or a part is lost, please contact SIRCHIE for a replacement.
- When not in use, the lens adapter should be removed from the camera and the lens protection ring placed back onto the camera.

