

TECHNICAL INFORMATION

Digital Evidence Photo System

Catalog Nos. DEPS100 and DEPS100M



No. DEPS100 Kit and Components

INTRODUCTION

SIRCHIE's most complete crime and accident scene recording outfit is constructed around a full-featured, high-resolution digital camera with zoom capability. This camera offers many of the features found on most digital cameras:

- Aperture and shutter priority
- Manual and automatic exposure
- Auto focus
- Built-in electronic flash

The camera features a back-lighted, bright LCD screen that permits real time viewing of the scene, facilitating framing and focus. Power is supplied by four (4) AA batteries. *For more detailed information on camera features and operation, please refer to the camera manufacturer's operator's manual.*

The DEPS100 includes the UPS100 Universal Photo Copy Stand with English scales and is housed in a rugged, molded copolymer carrying case with a precut molded insert for shock-resistant, organized storage of kit components shown above. The DEPS100M includes the UPS100M with metric scales.



No. PDN17V



No. PEN15V



No. PMNM9 with placard holders (7.5" and 13.25")

USE OF THE EVIDENCE PHOTO MARKERS

Two styles of photo evidence markers are included in the DEPS100 kit: No. PEN15V Photo Evidence Numbers and No. PDN17V Direction Indicators (tent-style), and No. PMNM9 Reversible Number Placards. The tent-style numbers and indicators are free-standing and are placed in the scene to indicate the location of various kinds of evidence.

The photo evidence placards are used in conjunction with one of the placard holders shown to the right above. The placard holders are slotted along one side to permit insertion of the appropriate number placard.

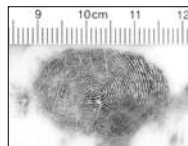
USE OF THE DEPS102 MiniPod

The No. DEPS102 MiniPod is used as a camera support for close-up photography. The MiniPod is equipped with three removable legs, a built-in close up lens and a camera lens adapter. Mount the legs, and then mount the camera to the top of the MiniPod by carefully screwing it onto the threaded lens adapter ring (Fig. 4).



No. DEPS102 (actual camera may differ than shown)

When photographing small items of evidence such as fingerprints, blood spatters, broken glass, etc., the camera should be placed in the *macro mode* (see camera Operator's Manual for specific information). Zoom the lens into the scene until the object fills the LCD screen (shown to the right). Be certain to include a scale in the scene. Use either the No. PPS400 or No. PPS402 Photo Evidence Scales.



USING THE UNIVERSAL EVIDENCE PHOTO STAND

The Universal Evidence Photo Stand was developed primarily for the recovery of impression evidence, but it may serve to assist in recording many other forms of physical evidence as well. The unit assembles and disassembles in seconds and is ideal for use at the crime scene or in the crime laboratory. The stand will support cameras weighing up to 2.5 lbs.

Upon receipt of the unit, carefully inspect the shipment for completeness and any transit damage. These components are shown on the top of the next page. Report any damage to the delivering carrier and notify the Customer Service office at the factory.

ASSEMBLY

To avoid any possible damage to the impression being photographed, assemble the unit some distance away prior to placement.

SPECIAL NOTE: Some cameras have a tripod mounting that is not directly in line with the lens. Additional mounting holes have been provided that permit repositioning the tripod extension arm mount on the main frame. Remove the screw securing the mount and reposition it as required.

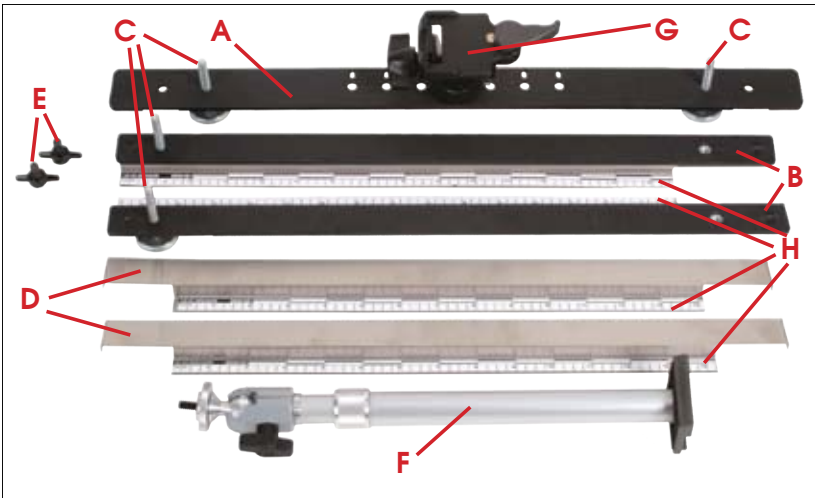


FIGURE 1—PARTS LIST:

- | | | |
|---------------------------|----------------------------------|--|
| 1- (A) Main Frame Support | 2- (D) Adjustable Scale Supports | 1- (G) Tripod-type Extension Arm Mount |
| 2- (B) Side Supports | 2- (E) Thumbscrews | 1- (H) 4 White Magnetic Scales |
| 4- (C) Adjustable Legs | 1- (F) Adjustable Extension Arm | |

1. Attach the two Side Supports (B) to the Main Frame Support (A) using the Thumbscrews (E). Do not over-tighten. Note that the Main Frame Support is notched



FIGURE 2



FIGURE 3



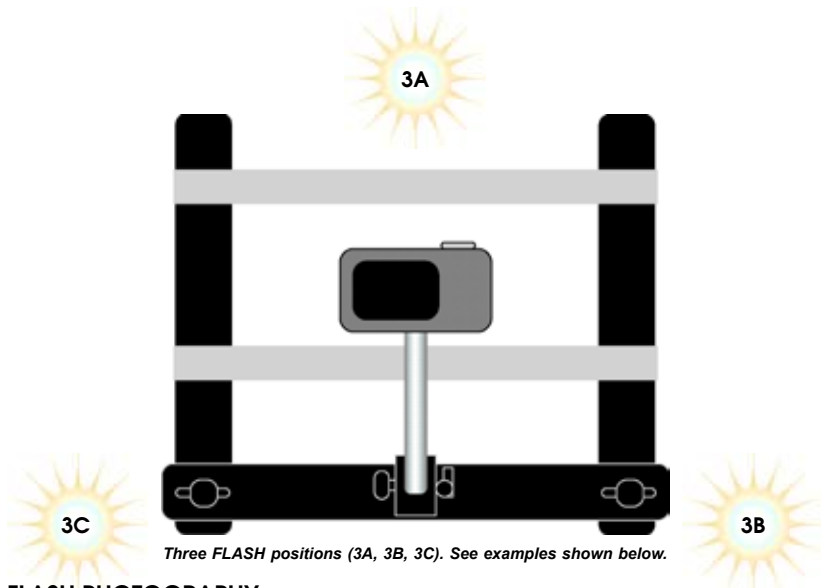
FIGURE 4

where the Side Supports are attached (Fig. 2). Install the Adjustable Legs (C) into the main frame and side supports (Fig. 3).

2. Attach the camera to be used to the threaded 1/4-20 screw on top of the Adjustable Extension Arm (F). Use the threaded lock nut to secure the position of the camera.
3. Place the base of the extension arm in the tripod-type mount, snap it into place and lock it in position (Fig. 5).
4. Place the assembled unit over the impression to be recorded as shown in Fig. 5.
5. Extend the Extension arm to a point where the camera lens is directly over the center of the evidence. Lock the extension arm in place using the thumbscrew at the base swivel and the knurled locking collar (shown to the right).
6. Position the camera so that the lens is at a 90° angle above the evidence.
7. Position the Adjustable Scale Supports as needed. *Note: When using a flash, use one adjustable scale on the side opposite the flash in order to avoid introducing a shadow from the scale.*
8. Adjust the zoom on the camera so that at least two of the photo scales are visible. Where possible, avoid using too much of the wide-angle lens setting as this will cause perspective distortion.



FIGURE 5



FLASH PHOTOGRAPHY

In most instances, it will be necessary to use an electronic flash (user supplied) when recording three-dimensional evidence such as footprints and tire tracks. A flash provides more control over the lighting and will create the necessary shadow detail. A minimum of three photos should be taken with the flash held at different positions as shown above. This will assure sufficient shadow detail in the impression (see Figs. 3A-3C below). When photographing two-dimensional evidence such as dust prints, one or two photos may be adequate. The flash should be held 3-4 feet from the impression and at an angle of 15° to 30° above the surface—depending upon the depth of the impression.



FIG. 3A—Flash from front.



FIG. 3B—Flash from right.



FIG. 3C—Flash from left.

DEPS100 CONTENTS:

- 1- Digital Crime/Accident Scene Camera w/4 AA Batteries
- 1- UPS100 Universal Evidence Photo Stand w/English Scales
- 1- PEN15V Vinyl Crime/Accident Photo Evidence Numbers 1-15 (Tents)
- 1- PDN17V Vinyl Crime/Accident Photo Direction Indicators (Tents)
- 1- PMNM 4"x4" Reversible Number Placards Numbers 1-48
- 1- 7.52" high Number Placard Holder
- 1- 13.25" high Number Placard Holder
- 1- DEPS102 MiniPod Closeup Stand
- 1- PPS400 6" Photo Evidence Scales (black on white) 10 ea.
- 1- PPS402 6" Photo Evidence Scales (white on blue), 10 ea.
- 1- DEPS100CC Molded Copolymer Carrying Case w/precut molded insert; Dimensions: 28" x 17" x 10.5"

DEPS100M CONTENTS:

- 1- Digital Crime/Accident Scene Camera w/4 AA Batteries
- 1- UPS100M Universal Evidence Photo Stand w/Metric Scales
- 1- PEN15V Vinyl Crime/Accident Photo Evidence Numbers 1-15 (Tents)
- 1- PDN17V Vinyl Crime/Accident Photo Direction Indicators (Tents)
- 1- PMNM 4"x4" Reversible Number Placards Numbers 1-48
- 1- 7.52" high Number Placard Holder
- 1- 13.25" high Number Placard Holder
- 1- DEPS102 MiniPod Closeup Stand
- 1- PPS400 6" Photo Evidence Scales (black on white) 10 ea.
- 1- PPS402 6" Photo Evidence Scales (white on blue), 10 ea.
- 1- DEPS100CC Molded Copolymer Carrying Case w/precut molded insert; Dimensions: 28" x 17" x 10.5"