
TECHNICAL INFORMATION

Crime Scene Stepping Pads

Catalog No. CSSP100K

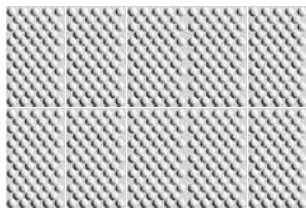
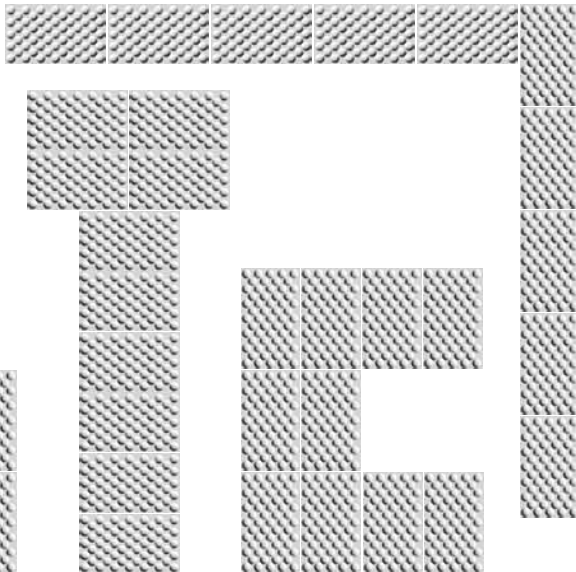
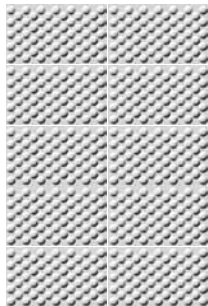
INTRODUCTION

Preserving the crime scene is one of the basic tenets of crime scene investigation. But it is extremely difficult to preserve, protect, and investigate all at the same time. The problem investigators have is how to avoid disturbing and/or destroying physical evidence while processing the crime scene. SIRCHIE has come up with the answer... CSSP100K Crime Scene Stepping Pads.

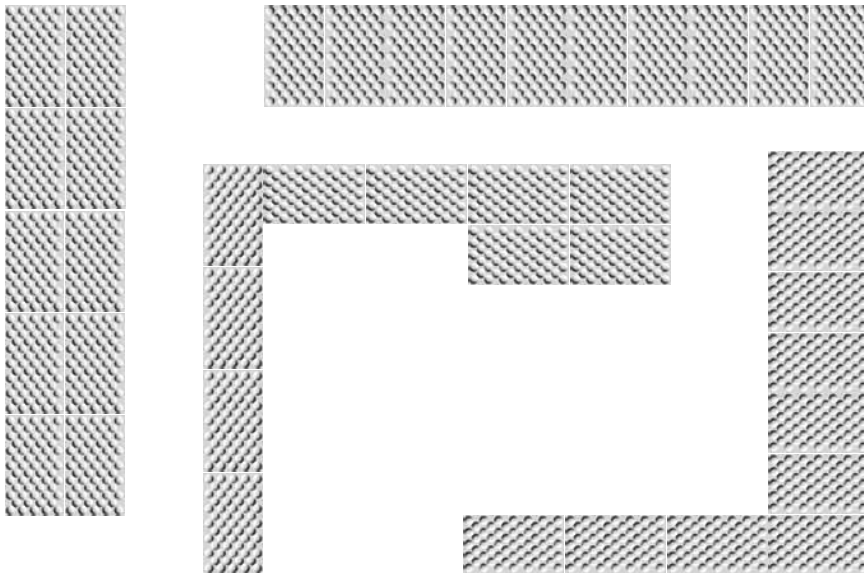
The CSSP100K Kit includes 10 heavy-gauge (0.090 thick) aluminum alloy stepping pads neatly stacked in a heavy-duty, molded carrying case for instant use. They are ideal for deployment on any flat floor surface whether it be wood, carpet, ceramic or vinyl tile. An extremely small footprint of 4.5 sq. inches per pad is afforded with the six points at which the stepping pads touch the floor.



SAMPLE CONFIGURATIONS



SAMPLE CONFIGURATIONS



The CSSP100K Crime Scene Stepping Pads boast two important safety features. First, are the non-slip friction pads installed on the feet to assure steadfast placement and prevent surface damage. Secondly, each pad is machine-stamped with 131 traction protrusions to facilitate a non-slip surface which is especially beneficial if you're wearing leather bottomed shoes.

PROCESS CRIME SCENES WITHOUT DISTURBING EVIDENCE



APPROACH THE CRIME SCENE AS NEVER BEFORE!—Whether the surface of the floor is carpet (shown to the left) or ceramic tile as shown below, the stepping pads get you in close without disturbing and/or destroying potential evidence.



DESIGNED WITH SAFETY IN MIND!—The non-slip friction pads installed on the feet assure steadfast, non-damaging placement while 131 traction protrusions provide a non-slip pad surface.

CSSP100K CONTENTS:

10- Heavy-gauge (0.090 thick) Aluminum Alloy Stepping Pads; Dimensions: 19.75" x 12" x 2"; Weight: 2.7 lbs. each

1-No. CSSP100KC Heavy-Duty, Molded Carrying Case; Dimensions: 28" x 16.5" x 10.5"; Weight: 34 lbs.